

# Dutchmen®

Travel Trailers and Fifth Wheels



2006 BUYERS GUIDE



# Dutchmen 2006 Buyers Guide

## GREAT Names! GREAT Floorplans! GREAT Value!

Year after year, Dutchmen is a best selling brand because of our commitment to high quality and value. We remain focused on providing innovative products that are loaded with standard equipment and unique features. That's why Dutchmen products offer more value for your dollar than any other recreational vehicle. Plus, Dutchmen's attention to detail in design and construction is why our customers return when it is time for their next recreational vehicle.

Lite Travel Trailers	Page 3-5
Large Slide Travel Trailers	Page 6-10
Mid-Profile Fifth Wheels	Page 11
Standard & Optional Features	Page 12



Dutchmen Manufacturing, Inc is a division of Thor Industries Inc. - North America's largest manufacturer of towable recreational vehicles. We welcome you to visit our offices and manufacturing facilities located in Goshen, Indiana.

## DUTCHMEN... THE VALUE LEADER

### MORE STANDARD FEATURES - MORE VALUE FOR YOUR DOLLAR!

Not all RV's are created equal. Here's a list of premium standard features found on all Dutchmen travel trailers and fifth wheels. Compare these features to the competition and we are sure you will agree that Dutchmen is your best RV Value.

- Arched solid wood cabinet doors
- Decorative wall border
- Mini blinds throughout
- Color-coordinated bedspread & headboard
- Full tub & shower surround
- Residential metal drawer glides
- *Armstrong* "Tough Guard" tile-like linoleum
- Large double-bowl sink with high-rise faucet
- Spacious "Storage Plus" storage areas
- Medicine cabinet with mirror
- Designer valances and window coverings
- Premium *Aqua Magic* foot pedal flush toilet
- Double door *Norcold* refrigerator
- Power bath roof vent
- Systems monitor panel
- Cable TV hook-up with satellite prep
- Front diamond plate rockguard on travel trailers
- Larger "Dinette Plus" seating areas
- Lift-up bed platform with storage below
- Premium decor color choices

### DUTCHMEN COMFORT PACKAGE

Enhance your camping experience with Dutchmen's Comfort Package. Available on all Dutchmen floorplans, the Comfort Package bundles popular options in one affordable package.

- NEW!** 5-in-1 surround sound home theater system (DSL & M5 models)
- AM/FM/CD player (Lite models)
- 13.5 BTU roof air conditioning
- Microwave oven
- A&E patio awning
- 6 gallon quick recovery gas/DSI water heater with bypass kit
- Skylight over tub
- TV antenna with power booster and cable jack, satellite prep
- 3 Burner range with oven (auto ignition)

# Dutchmen Lite

## Non-Slide & Small Slide Travel Trailers



Aerodynamic and easy to tow, the Dutchmen Lite product line features non-slide and small slide floorplans ranging from 18' to 31'. Base weights start at 4,200 pounds! Unlike the competitions stripped-down models, Dutchmen Lite is loaded with all the standard features and equipment you will find in the rest of the Dutchmen product line. With many great floorplans available in a variety of sizes to meet your family's needs, Dutchmen Lite is your best choice for affordable lightweight and easy to tow travel trailers.

### Premium Living Areas

Dutchmen Lite's interior design is a step above the rest. Arched solid wood cabinet doors, decorator interiors with mini-blinds, wall border and premium fabrics are all standard features. The spacious galley features a large double door refrigerator, a double bowl sink with a high-rise faucet and lots of large storage cabinets and drawers.



### DUTCHMEN LITE - THE FEATURES AND VALUE LEADER



### Comfortable Sleeping Areas

Dutchmen Lite floorplans offer several bedroom configurations to meet the needs of any family. Most bedroom plans feature overhead cabinets, shirt closets and night stands.

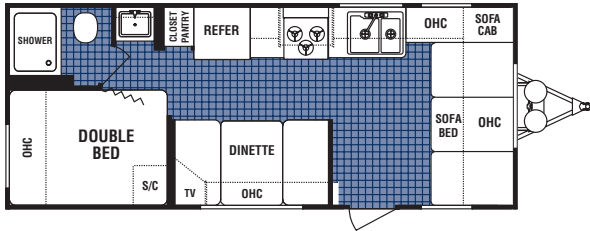
Plus, Dutchmen Lite offers a large "Storage Plus" exterior storage compartment. Located under the bed of most models, the full width pass-through storage area allows you to store those large items that you want to take on your next vacation.



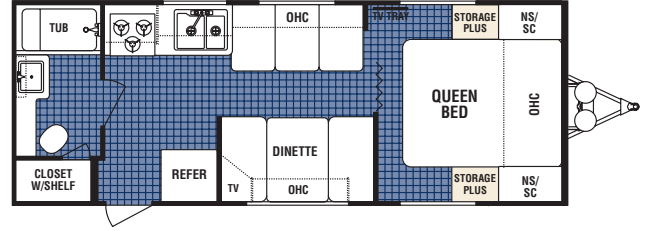


# Dutchmen Lite

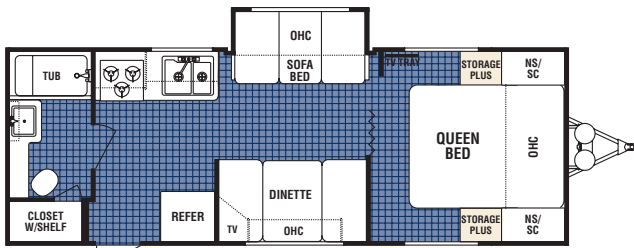
## Non-Slide & Small Slide Travel Trailers



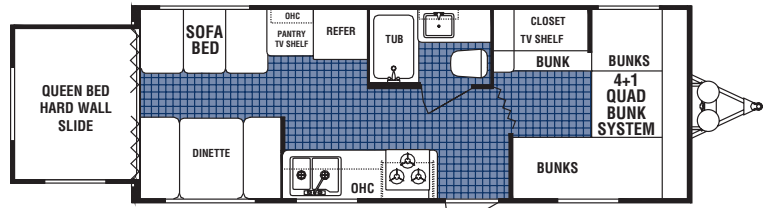
**18B** Available option: P



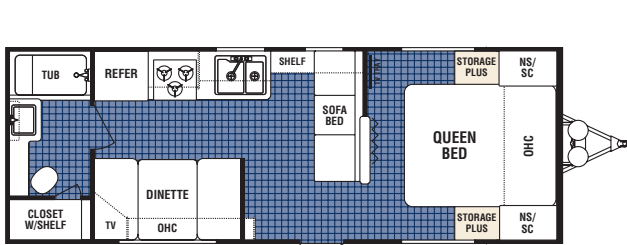
**24Q**



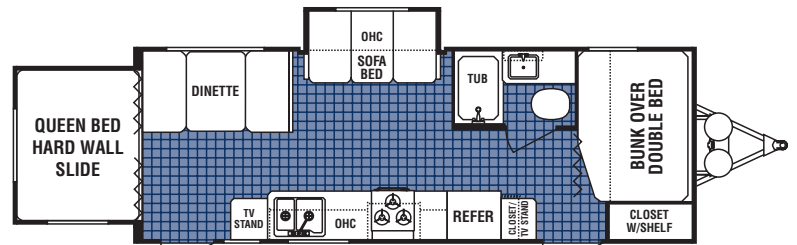
**24Q-SSL**



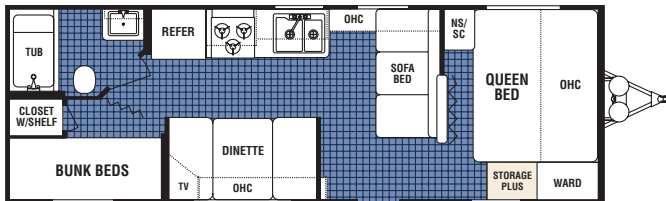
**24R** Available option: T



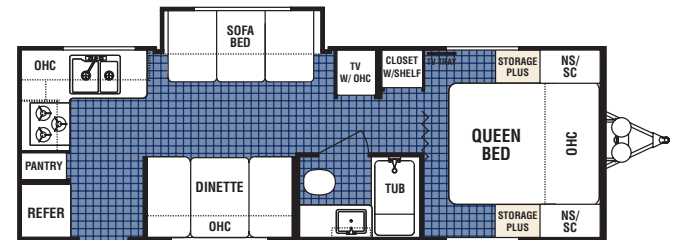
**25F**



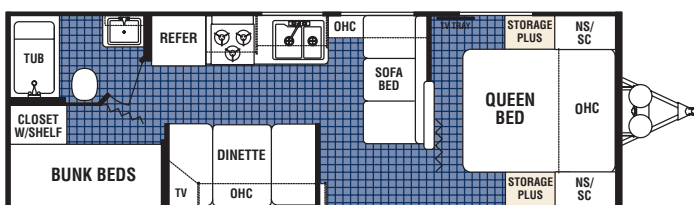
**25R-SSL**



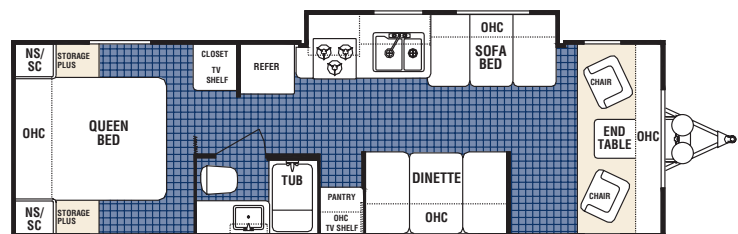
**26B** Available option: B, P, T



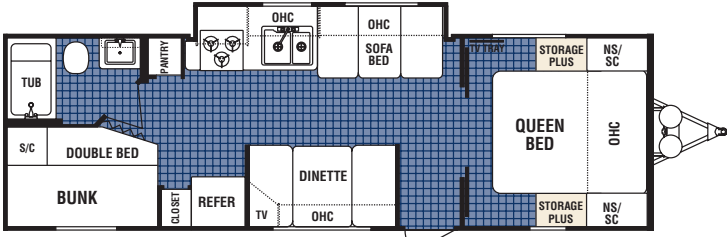
**26Q-SSL**



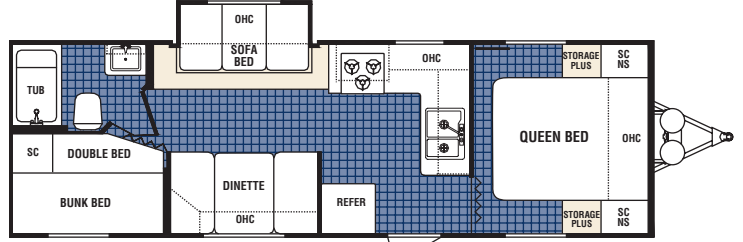
**27B** Available option: B, P, T



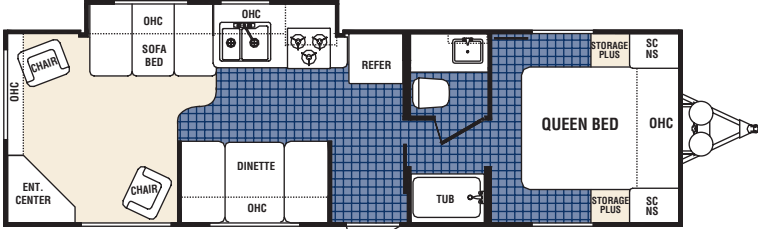
**28F-GS**



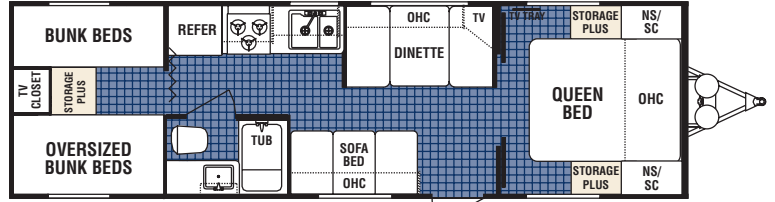
28G-SL Available option: B, O, T



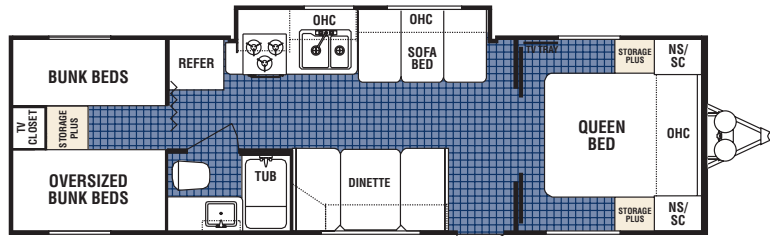
28H-SSL Available option: B, O, T



28R-GS



29Q Available option: J, T



29Q-GS Available option: J, T

## WEIGHTS & SPECIFICATIONS

See Page 10 for Floorplan Options

### Lite Travel Trailers

Model	18B	24Q	24Q-SSL	24R	25F	25R-SSL	26B	26Q-SSL	27B	28F-GS	28G-SL	28H-SSL	28R-GS	29Q	29Q-GS
Unloaded Vehicle Weight	4234	4405	4720	5276	4348	5418	4726	5220	5042	5560	5632	5388	na	5338	5840
Hitch Dry Weight	506	516	546	602	492	550	570	688	702	600	760	618	na	6600	792
GVWR	7700	7700	7700	7700	8400	7700	7700	7700	7700	7700	7700	7700	na	7700	7700
Net Cargo Capacity	3222	3295	2980	2424	4052	2282	2974	2480	2658	2140	2068	2312	na	2362	1860
Length	23'5"	26'2"	27'8"	26'2"	25'2"	26'3"	27'8"	27'8"	28'7"	29"	30'1"	29'10"	31'2"	31'2"	31'7"
Exterior Width	8'	8'	8'	8'	8'	8'	8'	8'	8'	8'	8'	8'	8'	8'	8'
Exterior Height	10'3"	10'3"	10'3"	10'3"	10'3"	10'3"	10'3"	10'3"	10'3"	10'3"	10'3"	10'3"	10'3"	10'3"	10'3"
Fresh Water Capacity	30	36	36	30	36	30	36	30	30	30	30	30	30	36	30
Grey Water Capacity	37	37	37	37	37	37	37	37/37	37	37	37	37	37	37	37
Black Water Capacity	37	37	37	37	37	37	37	37	37	37	37	37	37	37	37
Furnace Size (BTU's)	25000	25000	25000	25000	20000	25000	25000	25000	25000	20000	30000	30000	30000	30000	30000

Tire Size: ST205/75D15(C)

## MORE STANDARD FEATURES ON ALL DUTCHMEN TRAILERS!



An Aqua Magic toilet with foot flush is standard in all Dutchmen baths.



A 14" x 14" skylight roof vent with 12V fan is standard in all Dutchmen bathrooms.



Dutchmen features "RV 800" residential steel roller drawer glides. They are designed for years of reliable use.



Our composite sink is larger and deeper than most and includes a high-rise designer faucet.





# Dutchmen

## Large Slide Travel Trailers



Dutchmen large slide travel trailers are your best choice for features, value and luxury.

Built with pride and Dutch craftsmanship, Dutchmen travel trailers are loaded with features and amenities that make your time on the road as enjoyable as your time at home. All Dutchmen large slide travel trailers feature large, flush floor slide rooms and are available in floorplans ranging from 24' to 38' feet.

### NEW - 82" INTERIOR HEIGHT

Dutchmen 82" Interior Height

The Competition

Dutchmen Large Slide Travel Trailers (DSL models) now feature an impressive 82" interior height! The added four inches of headroom makes Dutchmen one of the most spacious units in the industry.

Compare to our competition and you'll find that we stand tall.

**More headroom, increased storage and more living space - A Dutchmen Advantage!**

### Luxurious Living Areas



What makes Dutchmen your best RV value?

Premium features like large picture windows, overhead cabinets in the slide out room, a large entertainment center and a 5-in-1 surround sound stereo. Plus, the interior height of Dutchmen DSL living area slide room is a full 6'!

**DUTCHMEN...  
THE VALUE  
LEADER**





### Spacious Kitchens

Large kitchens with an abundance of countertop and storage space are found on all Dutchmen floorplans. Countertop extensions are standard on most models.

Plus, a large double door refrigerator, large kitchen window, double bowl sink and high-rise faucet are just some of the standard features you get with Dutchmen.

### COMFORTABLE SLEEPING AREAS

The sleeping spaces in your next travel trailer or fifth wheel are as important as the living area. That's why Dutchmen offers multiple bedroom configurations with comfortable appointments and plenty of storage space for those extended vacations away from home. Whether you are looking for a bunk house, king bedroom slide suite or queen bed, Dutchmen has the floorplan that's right for you.

\*Look for our King Bed Slide Suite on several Dutchmen floorplans!

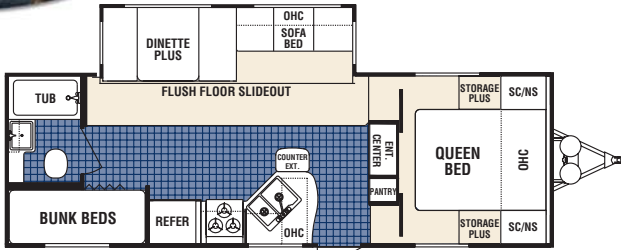


Have you seen the popular 30S - DSL floorplan? The oversized bunks slide out to create a separate living room with a desk and bar stools for your guests. The bottom bunk is available with the "Sit-N-Play" lower bunk that converts to a sofa during the day.

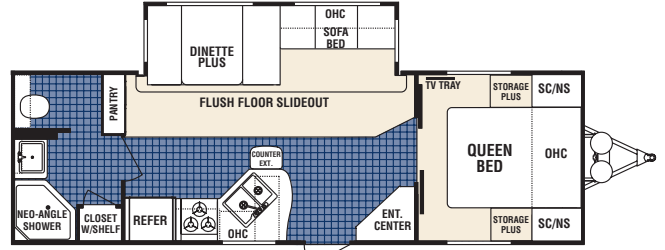


# Dutchmen

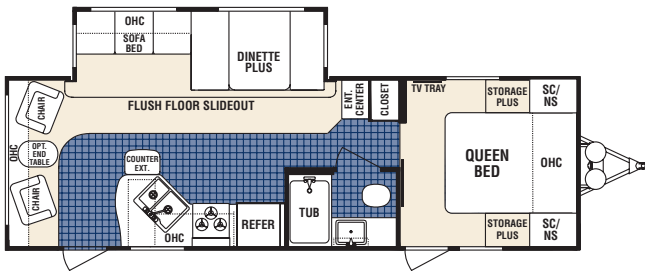
## Large Slide Travel Trailers



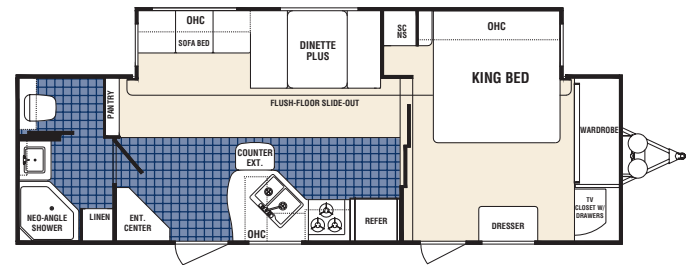
26B-DSL Available option: T



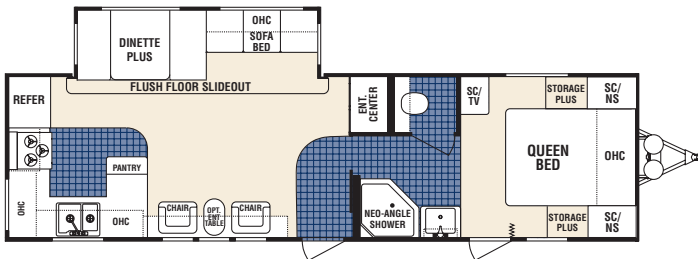
26F-DSL



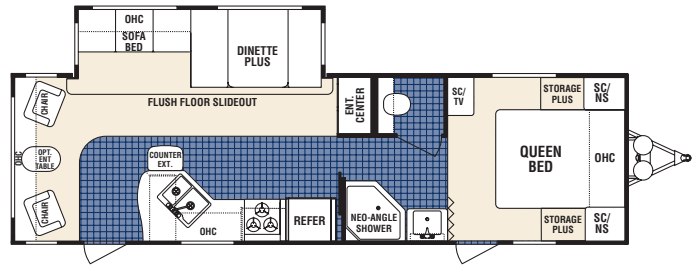
26L-DSL



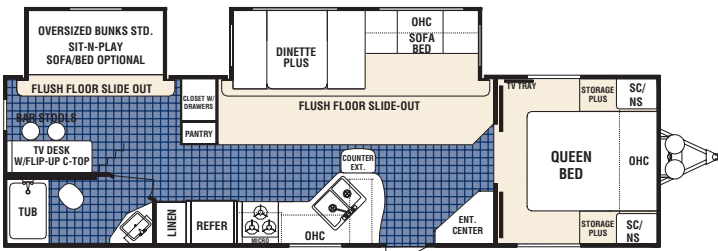
28F-DSL



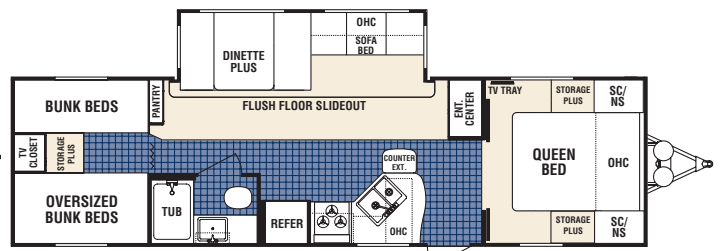
29R-DSL Available option: M



30L-DSL Available option: M



30S-DSL Available option: T, optional bath entry



31B-DSL Available option: J, T

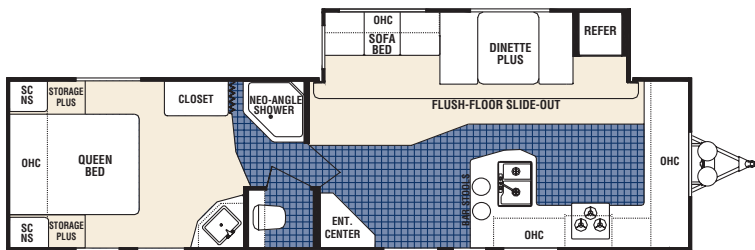
### DSL Travel Trailers

Model	26B-DSL	26F-DSL	26L-DSL	28F-DSL	29R-DSL	30L-DSL	30S-DSL	31B-DSL	31G-DSL	31GDSL-BS	31H-DSL	31K-DSL
Unloaded Vehicle Weight	6506	6626	6840	7902	7528	7252	7812	7134	7608	8078	na	7498
Hitch Dry Weight	964	886	756	840	948	1044	974	1018	1278	1328	na	1048
GVWR	9680	9680	9680	9680	9680	9680	9680	9680	9680	9680	na	9680
Net Cargo Capacity	3174	3034	2840	1778	2152	2428	1868	2546	2072	1602	na	2182
Length	28'5"	29'9"	29'9"	31'11"	33'6"	32'3"	33'10"	33'3"	34"	34"	31'11"	34'8"
Exterior Width	8'	8'	8'	8'	8'	8'	8'	8'	8'	8'	8'	8'
Exterior Height	11'4"	11'4"	11'4"	11'4"	11'4"	11'4"	11'4"	11'4"	11'4"	11'4"	11'4"	11'4"
Fresh Water Capacity	46	46	46	46	46	46	46	46	46	46	46	46
Grey Water Capacity	37	37	37	37	37/37	37	37/37	37	37/37	37/37	37	37/37
Black Water Capacity	37	37	37	37	37	37	37	37	37	37	37	37
Furnace Size (BTU's)	30000	30000	30000	30000	34000	34000	34000	30000	34000	34000	34000	34000

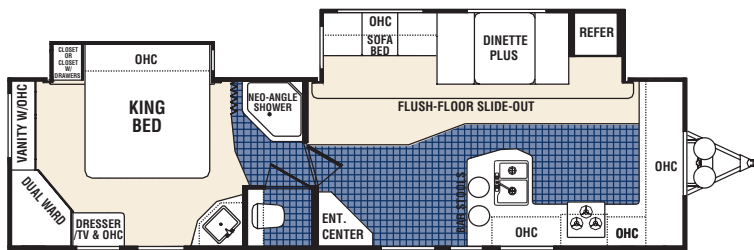
Tire Size: ST225/75R15(D)



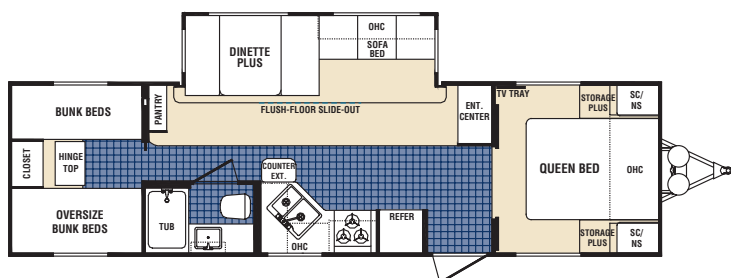
# Large Slide Travel Trailers



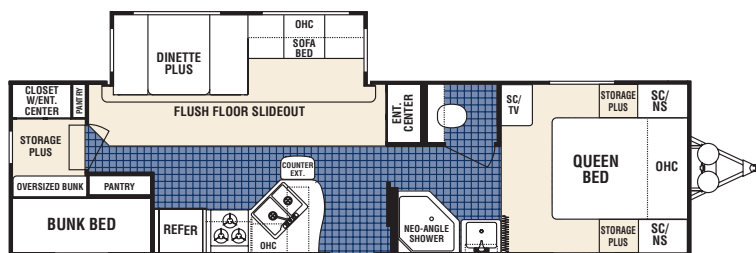
31G-DSL



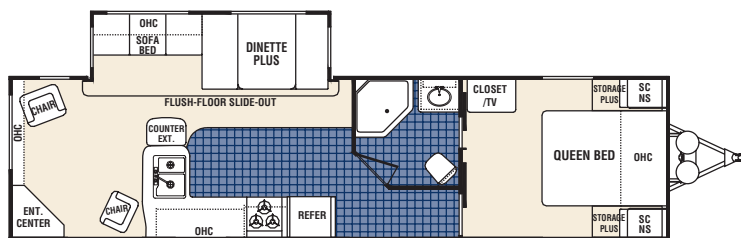
31G-DSL-BS Shown with Optional King Bed Slide



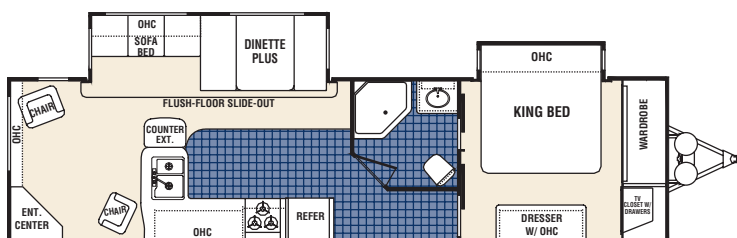
31H-DSL Available option: T



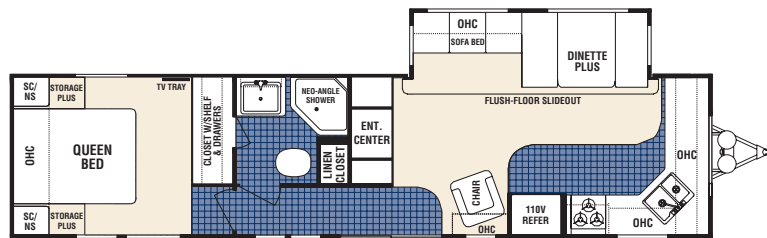
31K-DSL Available option: D, M, T



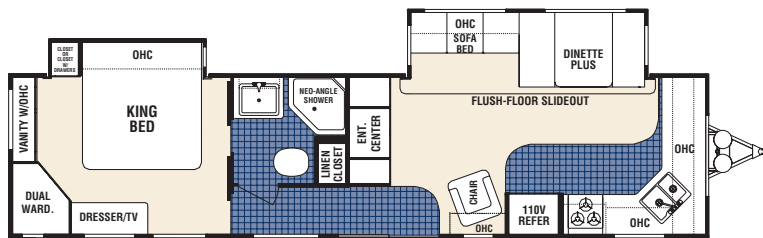
31L-DSL Available with optional patio door



31L-DSL-BS Shown with Optional King Bed Slide; Available with optional patio door



36F-DSL



36F-DSL Shown with Optional King Bed Slide Suite

31L-DSL	31L-DSL-BS	36F-DSL	36F-DSL-BS	38B-DSL
na	na	7964	na	8020
na	na	1240	na	1220
na	na	9680	na	11176
na	na	1716	na	3156
33'3"	na	37'7"	na	39'3"
8'	8'	8'	8'	8'
11'4"	11'4"	11'4"	11'4"	11'4"
46	46	46	46	46
37/37	37/37	37/37	37/37	37
37	37	37	37	37
34000	34000	34000	34000	34000

**Vehicle loading** - Every effort has been made to provide the greatest number of options for the recreational vehicle owner. Along with these choices comes the responsibility to manage the loads that are imposed by the choices that they remain within the manufacturer's specified chassis weight limits. Do not overload the recreational vehicle. **Dry weight** is the weight of the unit with standard run features. Some optional equipment not included. **Net carrying capacity (NCC)** is determined by subtracting unloaded vehicle weight (UVW) from gross vehicle weight (GVWR) and includes fluids, options and cargo. Liquid capacities and weights are approximations only.

**Warning** - This information is intended as a guide only. Weights of individual vehicles may vary. Consult your owner's manual for complete loading, weighing and towing instructions.

\*Weights estimated

CHECK OUT OUR WEBSITE FOR PRODUCT UPDATES, NEW FEATURES AND FLOORPLANS.  
[WWW.DUTCHMEN-RV.COM](http://WWW.DUTCHMEN-RV.COM)



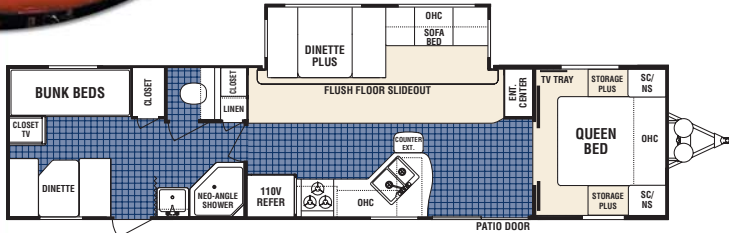
Free Good Sam Club 6 month trial membership when you purchase a Dutchmen trailer.

\*Details will arrive in the mail 4 to 6 weeks after purchase.

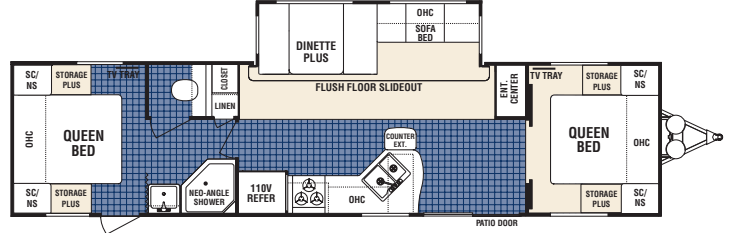


# Dutchmen

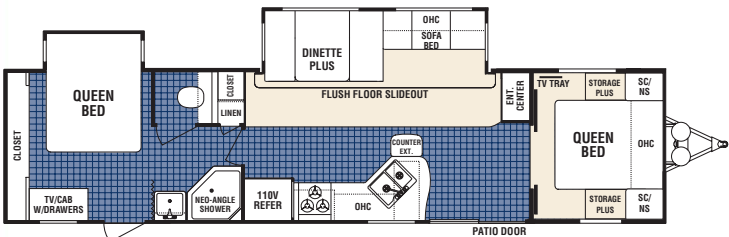
## Large Slide Travel Trailers



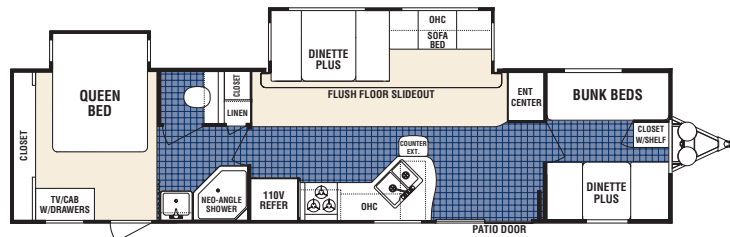
**38B-DSL** Shown with standard front queen & rear bunks/dinette  
**Floorplan #1**



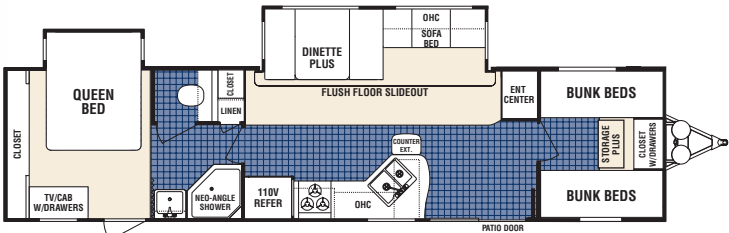
**38B-DSL** Shown with option (L) queen rear bed & (std.) queen front bed  
**Floorplan #2**



**38B-DSL** Shown with option (M) queen rear bed slide & (std.) queen front bed  
**Floorplan #3**



**38B-DSL** Shown with option (M) queen rear bed slide & (J) front bunks/dinette  
**Floorplan #4**

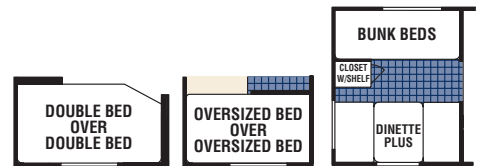


**38B-DSL** Shown with option (M) queen rear bed slide & (N) front quad bunks  
**Floorplan #5**

### LEGEND



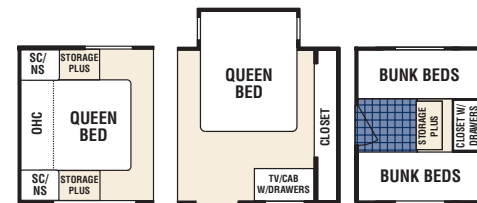
## FLOORPLAN OPTIONS



Option B

Option D

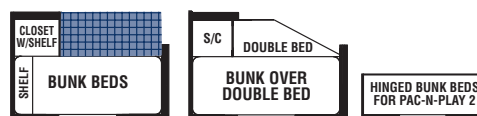
Option J



Option L

Option M

Option N



Option O

Option P

Option T

## POPULAR OPTIONAL FEATURES

\*See dealer for other available options



Our 6 gallon water heater features direct spark ignition (DSI) for easy lighting. (Included in the Comfort Package)



All Dutchmen trailers are available with the optional spray and wash station. (Optional)



# Mid-Profile Fifth Wheels



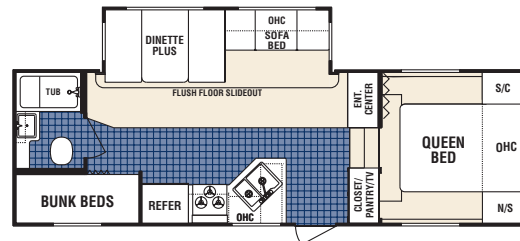
Just because you are looking for an affordable mid-sized fifth wheel doesn't mean you have to go without the premium features and amenities that make your RV your home away from home.

That's why Dutchmen mid-profile fifth wheels are designed to include all the premium features found in the rest of the product. Plus, our models offer expansive living, bath and bed rooms in a comfortable length that's aerodynamic and easy to tow.

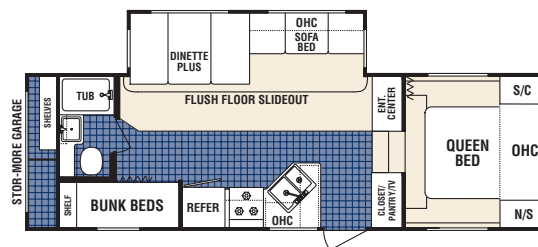
Dutchmen mid-profile fifth wheels - the best features, the right size, your best value.



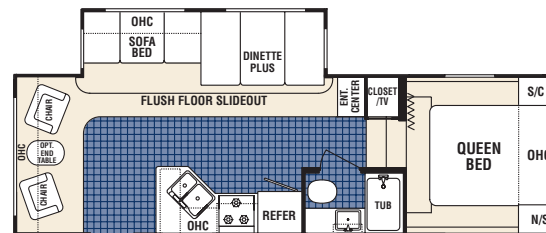
## FLOORPLANS



24B-M5



24G-M5



24L-M5

## WEIGHTS & SPECIFICATIONS

### Mid-Profile Fifth Wheels

Model	24B-M5	24G-M5	24L-M5
Unloaded Vehicle Weight	6976	7278	6720
Hitch Dry Weight	1164	1356	986
GVWR	10560	10560	10560
Net Cargo Capacity	3584	3282	3840
Length	27'10"	29'0"	26'1"
Exterior Width	8'	8'	8'
Exterior Height	12'2"	12'2"	12'2"
Fresh Water Capacity	46	46	46
Grey Water Capacity	37	37	37
Black Water Capacity	37	37	37
Furnace Size (BTU's)	34000	34000	30000

Tire Size: ST225/75R15(D)

## POPULAR OPTIONAL FEATURES

\*See dealer for other available options



Dutchmen features a 5-in-1 home entertainment center with remote control, a DVD/CD/MP3 player, AM/FM tuner, surround sound speakers and sub-woofer. (Included in the Comfort Package)



A skylight over the tub or shower increases headroom and adds light to your bathroom. (Included in the Comfort Package)



# Dutchmen

## 2006 Standard Features

	Non Slide and Small Slide TT	Large Slide TT and M5 Fifth Wheels
<b>Appliances &amp; Electrical</b>		
12 volt demand water pump	STD	STD
Safety equipment: Fire extinguisher, smoke/LP/CO detector	STD	STD
110 volt duplex receptacles interior and exterior	STD	STD
55 amp converter with built in battery charger	STD	STD
TV Tray in bedroom	STD	STD
Hydro flame forced air, DSI furnace with wall thermostat	STD	STD
<b>Kitchen</b>		
Norcold double door gas/electric refrigerator	STD	STD
Range hood with 12 volt light and exhaust fan	STD	STD
Larger "Dinette Plus" eating areas	STD	STD
Extra large, double bowl sink with high rise faucet	STD	STD
Countertop extension (see floor plan)	N/A	STD
<b>Bath</b>		
ABS tub/shower surround	STD	STD
Medicine cabinet with mirror	STD	STD
Shower curtain (Most models)	STD	STD
Glass shower door (Neo Angle Showers)	N/A	STD
12 volt power exhaust roof vent in bath	STD	STD
GFI protected 110 volt duplex receptacle	STD	STD
Aqua Magic foot flush toilet	STD	STD
<b>Misc.</b>		
Hardwood arched cabinet doors	STD	STD
Lift-up bed platform with storage below	STD	STD
Slide-out overhead cabinet (living room slide only)	STD	STD
Oversized storage drawers with metal drawer guides	STD	STD
Mini-blinds throughout	STD	STD
Living room carpet (where possible)	N/A	STD
Designer valances	STD	STD
Brushed nickel cabinet door hardware	STD	STD
Décor globe light over dinette	STD	STD
Coat hooks	STD	STD
Residential tile-like linoleum	STD	STD

### Popular Optional Features

Comfort Package	OPT	OPT
Bedroom slide	NA	OPT
Pac-n-Play storage	OPT	OPT
Executive chairs	OPT	OPT
Exterior spray and wash station	OPT	OPT

### Construction

	Non Slide and Small Slide TT	Large Slide TT and M5 Fifth Wheels
I-beam cambered chassis	STD	STD
ALKO leaf spring axle	STD	N/A
ALKO leaf spring axles with Ultra Lube feature	N/A	STD
Tandem axles with 4 wheel electric brakes	STD	STD
Large support outriggers w/solid continuous weld	STD	STD
5/8" exterior grade tongue & groove plywood floor	STD	STD
Double entry steps	STD	N/A
Triple entry steps	N/A	STD
Rear bumper with sewer hose storage	STD	STD
Track guided electric-powered flush floor living room slide-out	N/A	STD
Electric slide-out system	STD	STD
Rotocast holding tanks	STD	STD
Twin 30# LP bottles with cover	STD	STD
Aerodynamic front profile with diamond plate rock guard (TT's)	STD	STD
Fiberglass insulation-R7	STD	STD
Tinted radius clamp ring windows - Oversized dinette window	STD	STD
Rain gutter w/corner downspout	STD	STD
Flush combo entry latch/dead-bolt lock	STD	STD
Radius exterior "Storage Plus" compartments (where possible)	STD	STD
Detachable 30 amp power cord	N/A	STD
Patio light	STD	STD
1 piece seamless EPDM rubber roof (12 year rubber warranty)	STD	STD
Full walk-on roof with 5" trusses and 3/8" decking	STD	STD
Ducted air conditioning (most models)	STD	STD
Hitch light	STD	STD
Pass-through storage light	STD	STD

### See Dealer for Available Options

Product information, specifications, and photography in this brochure were as accurate as possible at time of printing. Photographs may contain some features that are optional on your vehicle. Since we continually strive to improve our products, actual products may differ. Prices and specifications are subject to change without notice. All capacities are approximate and dimensions are nominal. Some features shown are optional and may be different or unavailable in Canada. All logos and brand names shown in this brochure are registered trademarks of Dutchmen Mfg. Inc. Vehicles are designed for recreational use only and not intended for use as a primary residence.

Stabilizer jacks	OPT	OPT
Raised panel hardwood insert for refrigerator	NA	OPT
Free-standing dinette (available on most DSL floorplans)	NA	OPT
Hide-a-bed sofa	NA	OPT
10 Gallon gas electric water heater with DSI	NA	OPT

### DECOR CHOICES



Photographs may contain some features that are optional on your vehicle. Since we continually strive to improve our products, actual products may differ. Prices and specifications are subject to change without notice. All capacities are approximate and dimensions are nominal. Some features shown are optional and may be different or unavailable in Canada.

[www.dutchmen-rv.com](http://www.dutchmen-rv.com)

Dutchmen Manufacturing, Inc.  
A division of Thor Industries  
2164 Caragana Court ■ Goshen, IN 46526  
Sales: 574.534.1224 ■ Fax: 574.533.3807

Your Local Dealer

MEMBER



Go RVing

