

2005 | MOUNTAIN AIRE FIFTH WHEEL

by Newmar



IT'S ALL ABOUT
LIBERATED LIVING

EVERYTHING ABOUT A MOUNTAIN AIRE FIFTH WHEEL PROCLAIMS ITS PURPOSE: TO SIMPLIFY YOUR TRAVEL LIVING IN A WAY THAT LEAVES YOU REFRESHED, INVIGORATED AND TOTALLY FREE.

GO AHEAD AND SWEEP THROUGH ITS OPEN, AIRY INTERIOR. DELIGHT IN ITS THOUGHTFUL LAYOUT. SINK DEEP INTO ITS ULTRA-COMFORTABLE FURNITURE. AND REVEL IN ITS STORAGE CAPACITY. FROM THE ABUNDANCE OF INTERIOR CABINETS TO THE HUGE EXTERIOR PASS-THROUGH BAY, YOU HAVE PLENTY OF ROOM TO PACK ALL YOU NEED—AND THEN SOME.

A VACATION SHOULDN'T WEAR YOU OUT. RENEW YOURSELF WITH THE REFRESHING COMFORTS OF A MOUNTAIN AIRE FIFTH WHEEL.







Slideout

*Inlaid
Wood Trim*

Window Treatment

EASE AWAY ALL DAILY CARES

Slideout

Grand living on a grand scale: That's what you get with the Mountain Aire Fifth Wheel's living area slideout... courtesy of Newmar, the pioneer in RV slideouts.

Window Treatments

The Mountain Aire's standard large-scale double-pane windows are offset by beautiful interior treatments, including elegant lambrequins and pleated day/night shades. Vertical blinds are standard on rear bay windows.

Inlaid Wood Trim

The inlaid wood trim surrounding the slideout opening recalls the rich architectural detail of fine traditional homes.



38SDKC/Stone Green



37BSES/Wheat

LEFT: The Mountain Aire's cozy den model offers plush recliner chairs, an optional electric fireplace and a Sony® flatscreen color TV with Surround Sound, framed by a full-wall entertainment center.

ABOVE: This desk includes overhead cabinetry with extra storage space and a Sony flatscreen color TV.

BELOW: Pull out the cushion section of our Hide-a-Bed sofa for extra-restful sleeping accommodations, available on most floorplans.



35BLKS/Stone Green

Innovative Concept #47:
Hide-a-Bed

1.



2.



3.





REFRESH YOURSELF, BODY AND SOUL



36BSKS/Paprika



37BSES/Wheat

LEFT: The Mountain Aire kitchen features an optional 30-inch convection microwave and a three-burner, recessed range with electronic ignition and a Corian® bi-fold cover. It also includes an optional 10-cubic-foot Dometic® refrigerator with hardwood-framed, raised-panel front, plenty of optional Velvet Cherry hardwood cabinets and an island with a flip-up countertop extension.

ABOVE: The freestanding dinette table is complemented by four upholstered sidechairs in this optional sunroom slideout.

BELOW: The undermounted acrylic sink features flush, polished Corian sink covers and an optional filtered drink dispenser separate from the pullout spray faucet.



37BSES/Wheat



37BSES/Wheat

RENEW YOURSELF AS NEVER BEFORE



38SDKC/Stone Green

ABOVE: The Mountain Aire bedroom offers an optional King-sized bed with a quilted headboard and bedspread, a reverse sham and accent pillows. Individual reading lights are mounted above the headboard. The bed lifts up, giving you access to a spacious storage area underneath. The wardrobe offers compartmentalized shelving.

LEFT: The bathroom offers plenty of cabinet space, an easy-cleaning laminate countertop, a sink with a single-lever faucet and a tub/shower surround with a shower door.

BELOW: This bedroom's lighted, pullout vanity mirror provides a welcome touch of home.



35BLKS/Stone Green

- A. The Mountain Aire's optional manual porch extends with a pull of a latch to give you a wider platform for entering and exiting the coach. A handrail offers additional support. Also shown is one of the slideout's exterior sides, all of which are fully painted for extra protection and beauty.
- B. The expansive basement pass-through storage is not only lighted but offers an optional pullout tray.
- C. The front storage area comes complete with a pegboard and optional cargo netting to increase your storage options.
- D. Dual-tandem axles with the MOR/ryde® Rubber Equalizer Suspension and heavy-duty 16-inch wheels assure solid, stable road performance. And the wheels' eight-lug-bolt pattern matches that on your Chevy® or Ford® tow vehicle.



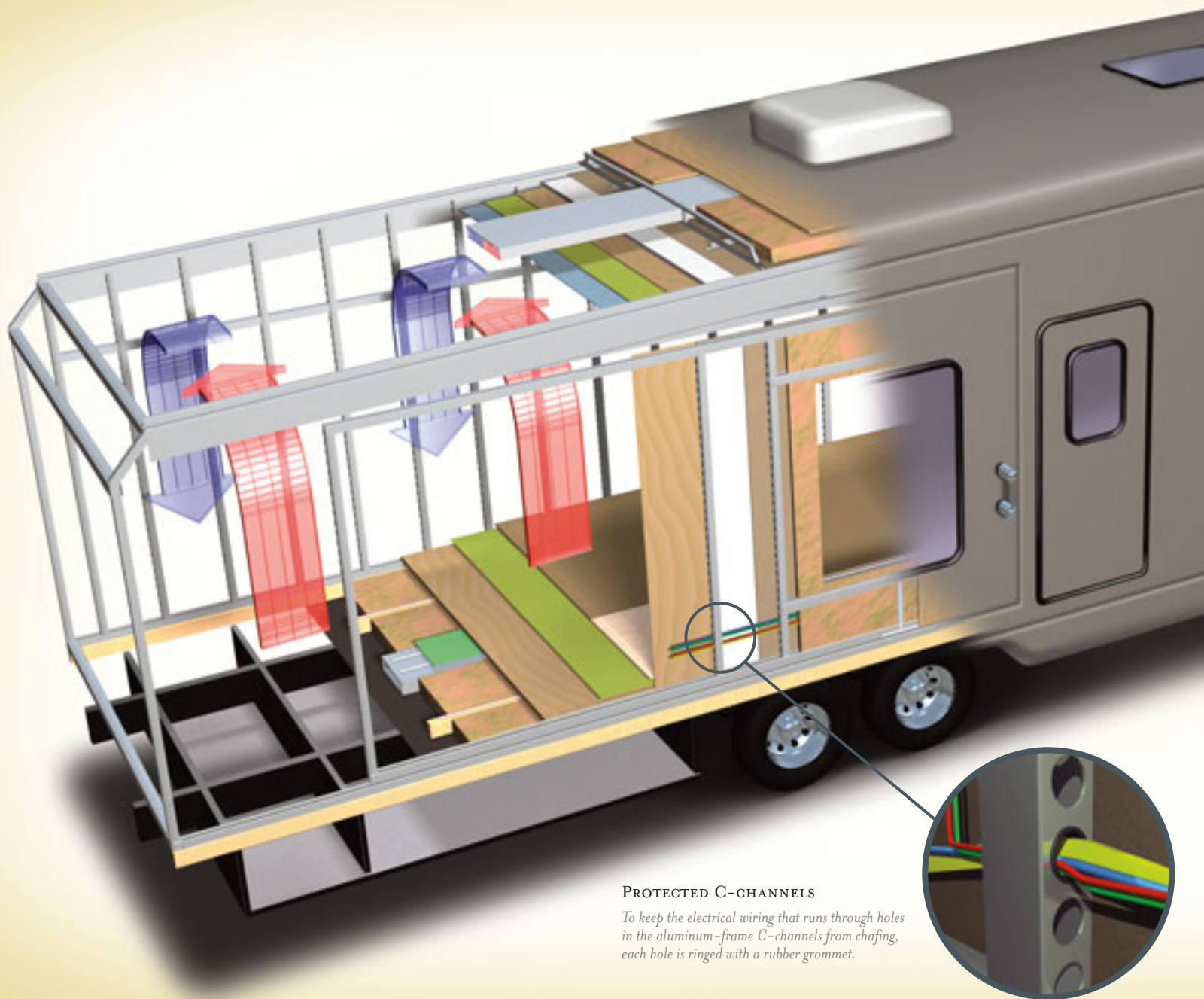
GREEN MICA



THE NEWMAR KOUNTRY KLUB

As a Newmar owner, you qualify for membership in the Newmar Kountry Klub. Join your local chapter, and just look at the perks you'll enjoy: friendship, fun and adventure with other Newmar owners • rallies and caravans • special RV show events • discounts on RV services • a free monthly Klub magazine • Klub merchandise. And that's just for starters.

Join today. Call 877.639.5582, toll-free, or visit the Kountry Klub section of newmarcorp.com.



PROTECTED C-CHANNELS

To keep the electrical wiring that runs through holes in the aluminum-frame C-channels from chafing, each hole is ringed with a rubber grommet.

NOTHING ENDURES LIKE A NEWMAR

Your Mountain Aire Fifth Wheel is built to go the distance. And for good reason: It's assembled on the same production line, to the same exacting standards and with the same meticulous care, as all Newmar coaches. It also reflects Newmar's long history of product innovation and industry "firsts." For us, this is a matter of pride. And tradition. Of taking personal responsibility and building a product we ourselves would want to own.

For the third year in a row, Newmar has won RVDA's Quality Circle Award, given in accordance with the results of an annual RV dealer satisfaction survey. The survey asks RV dealers to evaluate manufacturers' performance in four major categories: Sales Support, Product Competitiveness, Service and Warranty Support. We are honored to receive this award, of course. It tells us that our efforts on behalf of our dealers and customers are appreciated. And we will continue working to keep their trust.



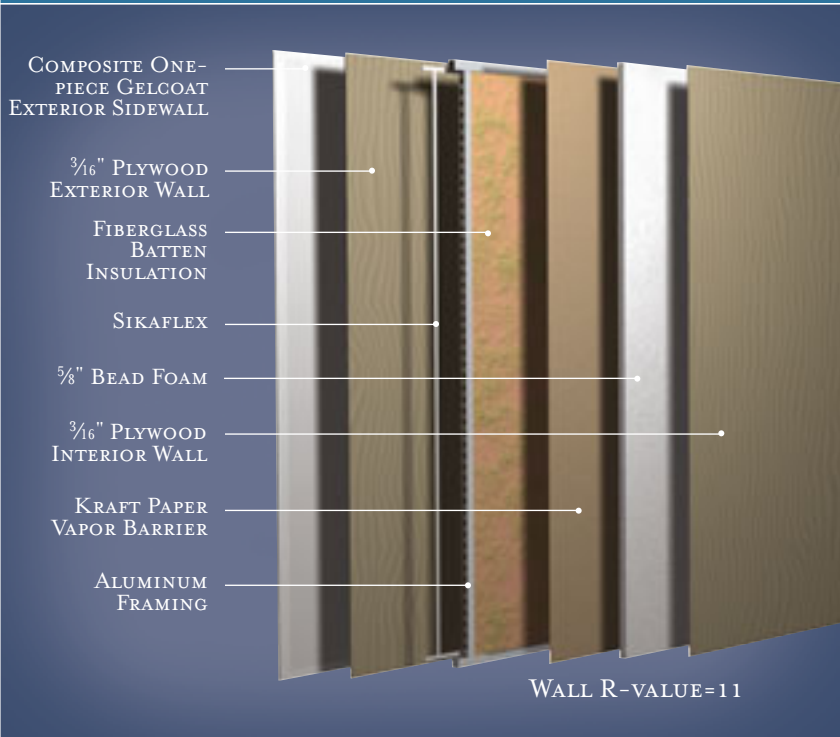
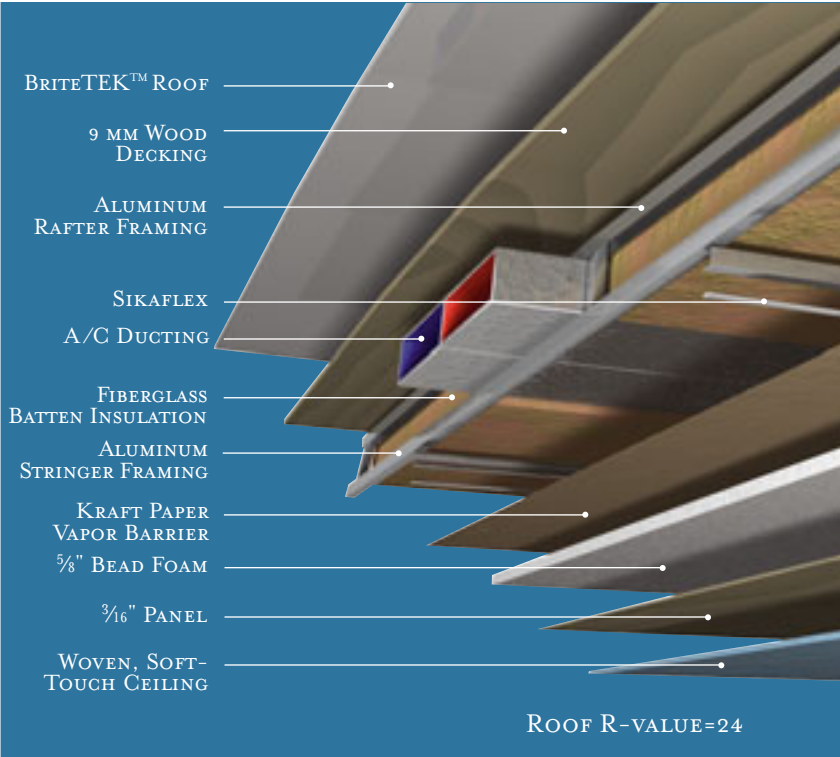


16" ON-CENTER FRAMING

Just like a fine site-built residential home, your Newmar home is framed 16 inches on center, which allows the best placement of outlets, switches and other components.

SIKAFLEX®

Sikaflex elastic adhesive is one of the strongest adhesives on the market today. It also serves as a sealant against air and water. And it helps dampen both sound and vibration.



**TOTAL COMFORT™
 NEWMAR CENTRAL AIR CONDITIONING**

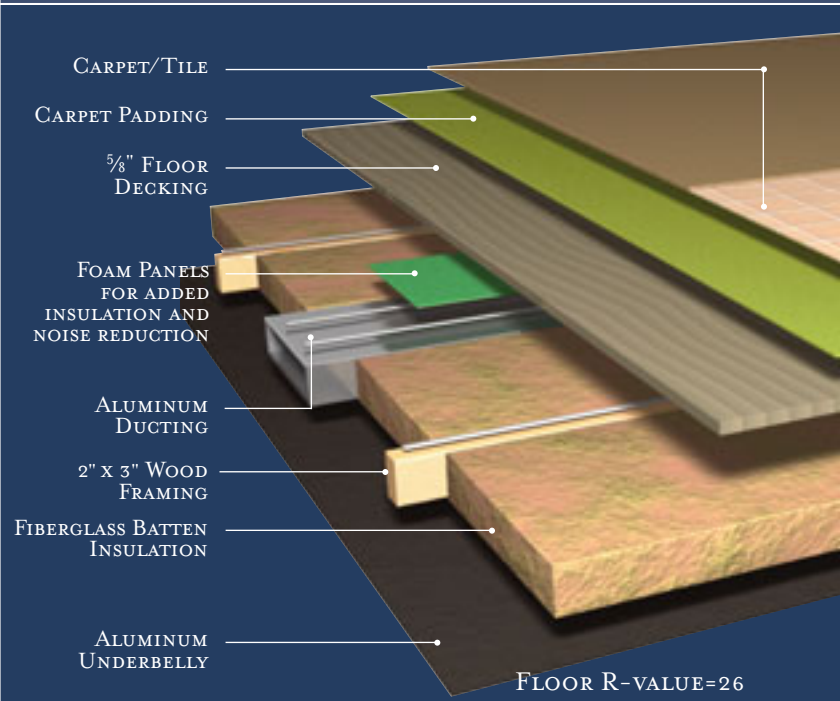


Newmar's Total Comfort Central Air Conditioning system—standard with every Newmar RV—is just like those found in most site-built homes. It's actually two separate, fully ducted systems: one to distribute incoming cool air, the other to quickly and effectively remove warm air from every living area.

NEWMAR FREEDOM WARRANTY™

As proof of our commitment to you, we at Newmar back every Mountain Aire Fifth Wheel with our industry-leading three-year limited warranty: The Newmar Freedom Warranty.* Ask your dealer for details. Coverage this comprehensive is really liberating.

** Please see a Newmar dealer for a copy of the complete terms of the Freedom Warranty.*



INTERIOR & EXTERIOR COLOR OPTIONS



Oak (standard)
Oak Hardwood



Maple Cream
Summer Maple Hardwood



Coastal Cherry Hardwood



Ericzburg Cherry
Velvet Cherry Hardwood

Upper cabinet doors shown. Real woods will have variations in grain and color. Natural wood products will darken over time.



STONE GREEN



WHEAT



PARISIAN BLUE



PAPRIKA



SAPPHIRE FULL-PAINT



GREEN MICA FULL-PAINT



TOPAZ FULL-PAINT



PAPRIKA



PARISIAN BLUE



STONE GREEN



WHEAT

FULL-PAINT MASTERPIECE FINISH™

Newmar's Full-Paint Masterpiece Finish creates an exterior of stunning beauty and incredible endurance—a true work of art. As industry leaders in applying full body paint to motorhome coaches, we at Newmar are pleased to offer the Full-Paint Masterpiece Finish as a Mountain Aire Fifth Wheel option.

DIAMOND SHIELD

Diamond Shield Front Paint Protection Film is optional on all Mountain Aire Fifth Wheels. Diamond Shield Film protects the front against stone chips, scratches and bug acids. Diamond Shield Film is optically clear with a high gloss designed to keep the Full-Paint Masterpiece Finish looking new.

FEATURES & SPECIFICATIONS

STANDARD FEATURES

GRAPHICS & DECOR CHOICES

- Exterior Painted Bottom Wrap

AIR CONDITIONING & HEATING

- 13.5M Brisk Air Central Air Conditioner
- Two 30 Lb. LP Gas Bottles with Automatic Regulator
- LP Leak Detector
- LP Furnace with In-Floor Ducted Heating

APPLIANCES & ACCESSORIES

- Ceiling Fan in Living Room
- Sony® Flatscreen Color TV in Living Area
- Sony Flatscreen Color TV in Media Room with VCR, DVD and Surround Sound System — Available on SDKC Floorplan
- Entertainment-Center TV Mounted on Pullout Swivel/Slide Tray
- Cable TV Connection with RG 6 Coax
- Telephone Connection with One Phone Jack in Living Area
- Satellite Prep — Phone, TV Jack and Receptacle
- Three-Burner Recessed Range with Glass Oven Door & Electronic Ignition
- Dometic® 2862 Refrigerator, 8 Cu. Ft.
- Hardwood-Framed Raised-Panel Refrigerator Front
- Corian® Range Cover Matching Countertop Material
- 12 Gal. Gas/Electric Water Heater — Direct-Spark Ignition
- TV Antenna with Power Booster, One Exterior and Two Interior Jacks
- Washer & Dryer Prep
- AM/FM Radio with Cassette, CD Player
- 22" Spacesaver® Microwave Oven

CABINETS & FURNITURE

- Solid-Oak Raised-Panel Cabinet Doors
- Two Recliners
- Drawers with Metal Guides
- Corian Countertop with Undermounted Acrylic Sink and Flush Sink Covers in Kitchen
- Lifts on Bed to Access Storage Area
- Queen Bed — 60" x 80"
- Flexsteel® Furniture
- Dinette Table with Four Chairs
- Laminate Countertop with Porcelain Bowl in Bathroom

ELECTRICAL FEATURES

- 50 Amp Electrical Service with Flexible Cord
- 110 Volt and 12 Volt Lighting to Main Slideout
- 110 Volt Receptacle on Door Side
- Lights in Wardrobes
- 55 Amp Converter
- 12 Volt Battery
- Fluorescent Ceiling Lights in Living Room and Kitchen Area

EXTERIOR FEATURES

- Rear Skid Bars with Bike-Rack Capability
- Snaps for Fifth Wheel Jacks
- Stabilizer Jacks, One Pair
- Gelcoated Fiberglass Exterior Sides
- Power Front Jacks

INTERIOR FEATURES

- Woven Soft-Touch Ceiling
- Carpet with High-Density Padding in Living Room and Bedroom Area

- Vinyl Floor in Kitchen, Foyer and Bathroom Area
- Hardwood Fascia on Living Area Slideout
- Kitchen Wastebasket & Convenience Light
- Mini-Blind Window Shades in Kitchen Area
- Smoke Detector & 5 Bc Fire Extinguisher
- Day/Night Pleated Window Shades and Lambrequins (Vertical Blinds on Rear Bay Windows)
- Quilted Bedspread with Reverse Sham, Matching Bed Skirt and Accent Pillows

PLUMBING/BATH FEATURES

- Fiberglass Tub/Shower with Glass Shower Door
- Bath Accessories — Towel Bar, Tissue Holder, Towel Ring & Robe Hook
- Demand Water System with Aquajet™ "ES" Pump
- Sewage-Hose Holder, Easy Access Flop-Down Tray
- Monitor Panel
- Tub/Shower Wall Light
- Sewage Holding-Tank Rinse
- Water-Heater Bypass System
- Thetford™ Bravura Stool

CONSTRUCTION FEATURES

- BriteTEK™ Roof with 9 MM Decking
- Gelcoated Fiberglass End Caps
- 12" I-beam Frame with Molded Wrap Storage Doors
- 5/8" Foam Laminated in Sidewalls & Ceiling
- Enclosed Underbelly with Fiberglass Insulation & Aluminum Laminated to 5/8" Foam
- Slideout Tray in Rear Bumper with Spare Tire Storage and 12 Volt Battery
- Aluminum-Frame Sidewalls and Roof Construction, 16" on Center
- Roof R-value Rating: 24
- Sidewall R-value Rating: 11
- Floor R-value Rating: 26

WINDOWS, AWNINGS & VENTS

- A&E® 9000 Side Awning
- Power Vent with Wall Switch in Bathroom
- Fan-Tastic® Vent with Rain Sensor in Kitchen Area
- Lighted Acrylic Assist Handle at Entrance Door
- Triple Entrance-Door Step
- Double-Pane, Tinted Safety-Glass Windows

TOWABLE CHASSIS FEATURES

- Spare Tire Located in Rear Pullout Bumper Tray
- Dual Wheels with MOR/ryde® Rubber Equalizer Suspension
- Shock Absorbers

OPTIONAL FEATURES

APPLIANCES & ACCESSORIES

- 20" Color TV in Bedroom
- Norcold® 4 Door Refrigerator with Icemaker and Drink Dispenser
- 18" Dishwasher
- Compact Two-Piece Washer/Dryer
- Dometic 1062 Refrigerator, 10 Cu. Ft. (91 Lb.)
- Dometic 1292 Side-by-Side Refrigerator, 12 Cu. Ft. (117 Lb.)
- 30" Convection Microwave with Three-Burner Cooktop (13 Lb.)
- U-Line™ Icemaker (62 Lb.)
- Sony Surround Sound with VCR, DVD and Subwoofer

- Central Vacuum with Floor Port (27 Lb.)
- Fireplace (56 Lb.)

CABINETS & FURNITURE

- Maple Cream Cabinets
- Ericksburg Cherry Cabinets
- Solid-Oak Hardwood Cabinets (25 Lb.)
- Summer Maple Hardwood Cabinets (25 Lb.)
- Coastal Cherry Hardwood Cabinets (25 Lb.)
- Velvet Cherry Hardwood Cabinets (25 Lb.)
- Glider Recliner, Leather/Vinyl in Place of Standard
- Combination Desk/Dinette Table with Two Folding & Two Fixed Chairs
- Luxurious Pillowtop Mattress
- Sofa Coffee Table
- King Bed in Some Floorplans

ELECTRICAL FEATURES

- 7.0 Onan® Generator with Auto Changeover and Battery (371 Lb.)
- Battery Disconnect Switch
- Quick-Charge Battery System
- Manual Cord Reel — 50 Amp (30 Lb.)

EXTERIOR FEATURES

- Full-Paint Masterpiece Finish™
- Diamond Shield Front Protective Film on Lower Front Storage Area
- Power Twins in Lieu of Standard Stabilizer Jacks (20 Lb.)
- Pullout Storage Tray (85 Lb.)
- Hydraulic Leveling Jacks in Place of Standard
- Rear Ladder
- Bike-Rack Carrier (20 Lb.)
- Cargo Net in Storage Area
- Mud Flaps (18 Lb.)

INTERIOR FEATURES

- Ceramic Floor Tile in Bathroom Area (75 Lb.)
- Simulated Plank Floor in Kitchen and Foyer Area (30 Lb.)
- Ceramic Floor Tile in Kitchen and Foyer Area (35 Lb.)
- 12" Marble-Look Floor Tile in Kitchen and Main Bathroom Area
- Hardwood Valance Window Treatment
- Lined Day/Night Pleated Window Shades
- Lined Drapes with Valances

PLUMBING/BATH FEATURES

- SeaLand™ 500+ China Stool (31 Lb.)

CONSTRUCTION FEATURES

- Power Lock Arms on All Slideout Rooms (3) (75 Lb.)
- Gelcoated Fiberglass Roof & Top Wrap

WINDOWS, AWNINGS, & VENTS

- Automatic Triple Entrance-Door Step (7 Lb.)
- Skylight in Bathroom Located Above Tub/Shower (2 Lb.)
- Power Porch Landing with Railing & Power Step (130 Lb.)
- A&E Weather Pro Side Awning (128 Lb.)
- Fan-Tastic Vent in Bathroom

TOWABLE CHASSIS FEATURES

- MOR/ryde Independent Suspension (384 Lb.)
- Electric-Over-Hydraulic Disc Brakes (80 Lb.)

FLOORPLAN SPECIFICATIONS

FLOORPLAN	TIRE SIZE	GAWR	GVWR	APP. LENGTH	APP. HEIGHT	WIDTH	APP. DRY WEIGHT	APP. HITCH WEIGHT	FRESH WATER	GREY WATER	SEWAGE CAP.	APP. HITCH HEIGHT	HEAT CAP.
35BLKS	235/85R16-E	9,000 lb.	20,000 lb.	36' 04"	13' 02"	101"	14,501 lb.	2,690 lb.	75 gal.	87 gal.	55 gal.	47"	55,000 Btu
35LKBH	235/85R16-E	9,000 lb.	20,000 lb.	36' 07"	13' 02"	101"	15,004 lb.	2,493 lb.	75 gal.	92 gal.	50 gal.	47"	55,000 Btu
36BSKS	235/85R16-E	9,000 lb.	20,000 lb.	37' 07"	13' 02"	101"	15,336 lb.	2,894 lb.	75 gal.	97 gal.	55 gal.	47"	55,000 Btu
36KSWB	235/85R16-E	9,000 lb.	20,000 lb.	37' 10"	13' 02"	101"	15,207 lb.	2,869 lb.	75 gal.	97 gal.	55 gal.	47"	55,000 Btu
36SKDS	235/85R16-E	9,000 lb.	20,000 lb.	37' 01"	13' 02"	101"	14,716 lb.	2,587 lb.	75 gal.	82 gal.	50 gal.	47"	55,000 Btu
37BSSES	235/85R16-E	9,000 lb.	20,000 lb.	38' 11"	13' 02"	101"	15,261 lb.	2,879 lb.	75 gal.	97 gal.	55 gal.	47"	55,000 Btu
38RLPK	235/85R16-E	9,000 lb.	20,000 lb.	39' 01"	13' 02"	101"	15,591 lb.	2,787 lb.	75 gal.	97 gal.	55 gal.	47"	55,000 Btu
38SDKC	235/85R16-E	9,000 lb.	20,000 lb.	39' 09"	13' 02"	101"	15,206 lb.	2,870 lb.	75 gal.	92 gal.	50 gal.	47"	55,000 Btu

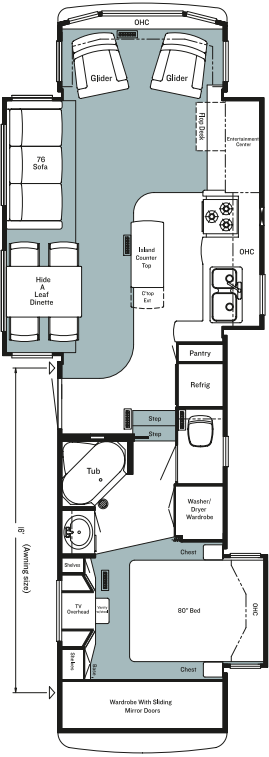
In keeping with our tradition of bringing our customers the highest-quality products in the industry, Newmar works with the following manufacturers to supply components for our vehicles.

SONY

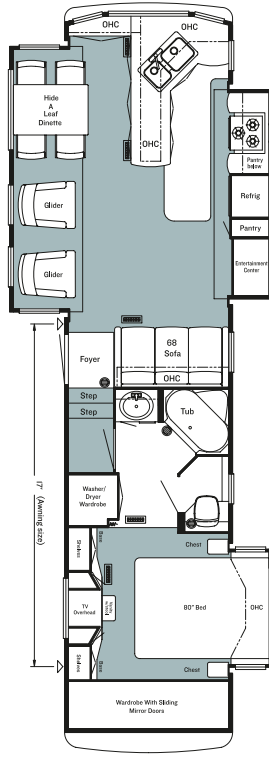
DIAMOND SHIELD

www.diamond-shield.com

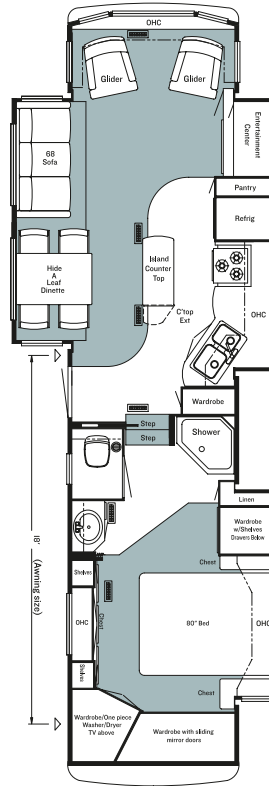
FLOORPLANS



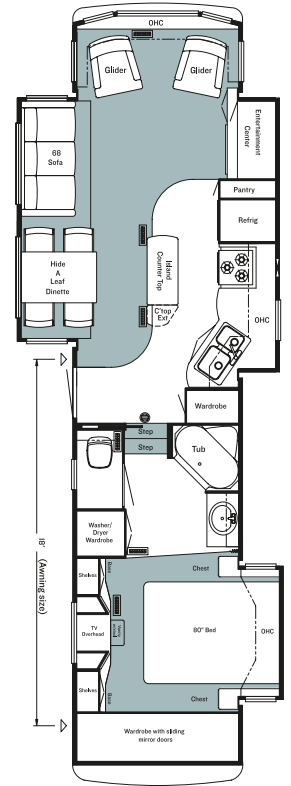
MAFW 35BLKS
Options: M764



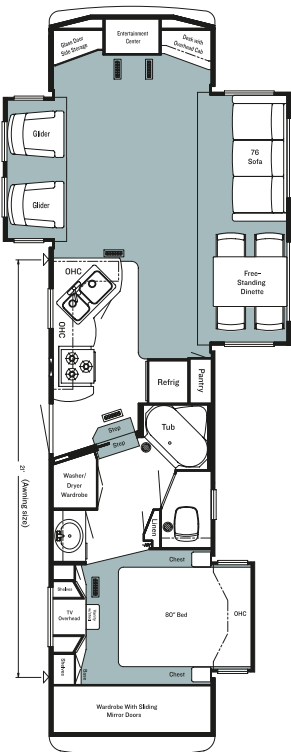
MAFW 35LKBH
Options: K561, M466



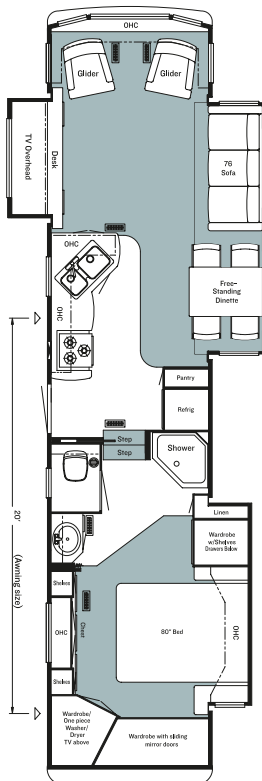
MAFW 36BSKS
Options: J336, K569, K637



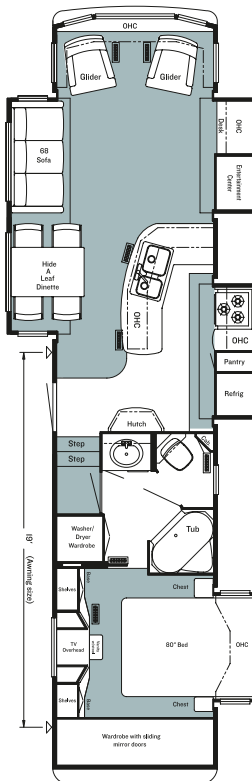
MAFW 36KSWB
Options: K571, K639, M468, P160



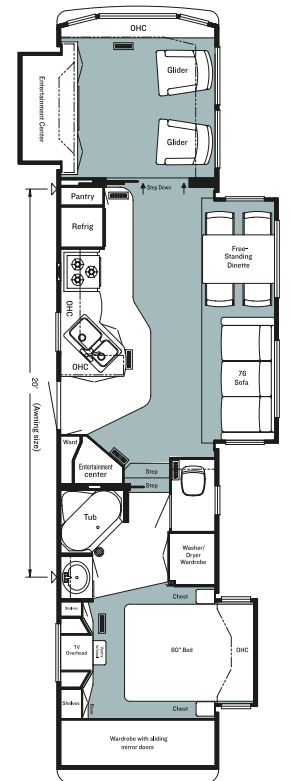
MAFW 36SKDS
Options: M764



MAFW 37BSES
Options: J336, K569, K637



MAFW 38RLPK
Options: K561, M466

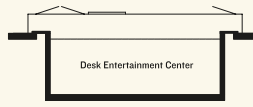


MAFW 38SDKC
Options: K470, K560, M764

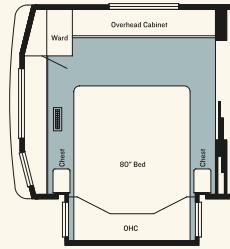
FLOORPLAN OPTIONS



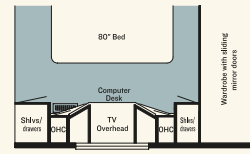
J336
Fireplace in Lieu
of Chest of Drawers
MAFW: 36BSKS,
37BSES



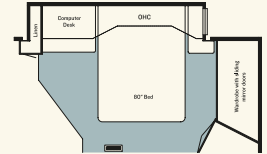
K470
Desk Entertainment
Center
MAFW: 38SDKC



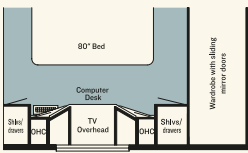
K560
Rear Bedroom Slideout
in Lieu of Den
MAFW: 38SDKC



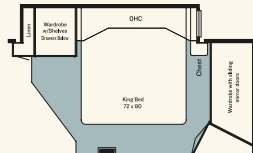
K561
Computer Center in
Lieu of Vanity Center
MAFW: 35LKBH,
38RLPK



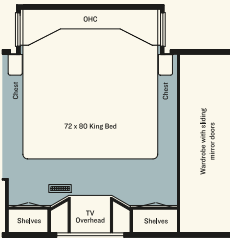
K569
Computer Desk in Lieu
of Wardrobe
MAFW: 36BSKS,
37BSES



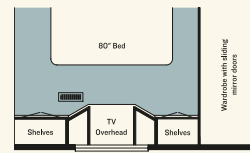
K571
Computer Center in
Lieu of Vanity Center
MAFW: 36KSWB



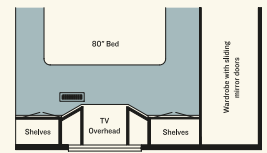
K637
King Bed
MAFW: 36BSKS,
37BSES



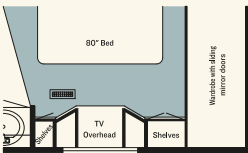
K639
King Bed
MAFW: 36KSWB



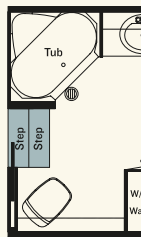
M466
Vanity Over Dresser
in Lieu of Vanity Center
MAFW: 35LKBH,
38RLPK



M468
Vanity Over Dresser
in Lieu of Vanity Center
MAFW: 36KSWB



M764
Vanity/Dresser Center
in Lieu of Vanity Center
MAFW: 35BLKS,
36SKDS, 38SDKC



P160
Unenclosed Stool Room
MAFW: 36KSWB

NEWMARCORP.COM

Visit our Web site. Here you'll easily access the most up-to-date Newmar product information, model specifications, floorplans and options. You'll also learn more about who we are, how we work and what we believe in. Become a registered user—for free—and you'll also get access to the latest event data, technical and service tips and the location of your nearest Newmar dealer. This isn't just our site—it's yours.

THE NEWMAR FACTORY TOUR

We'd love to have you visit our state-of-the-art production facility in Nappanee, Indiana. Factory tours are given Monday through Friday at 10 a.m. and 1 p.m. (Indiana time). Pre-registration is not required but is helpful, since tour-group sizes may be limited from time to time. Please arrive 15 minutes before the hour and check in at the tour area that is located in Building Nine on Cheyenne Street. No open-toed sandals can be worn, and children under the age of eight are not allowed to take the tour.

For more information or to pre-register, please call 800.860.0086.



NEWMAR QUALITY: A WAY OF LIFE

NEWMAR CORPORATION
355 N DELAWARE ST
PO BOX 30
NAPPANEE IN 46550-0030
574-773-7791 Fax 574-773-2895
www.newmarcorp.com

Your Official Mountain Aire Dealer: