

Winner's Circle

Sport Recreational Vehicles

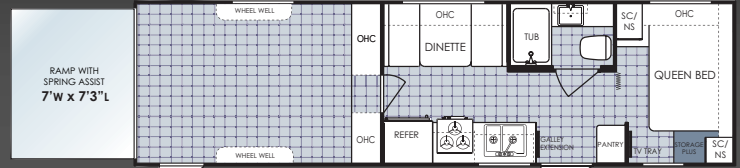
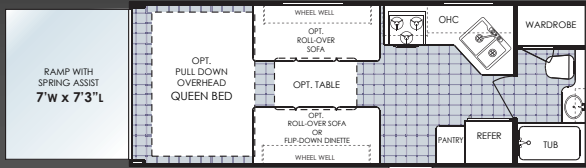


First-Class Floorplans

Travel Trailers

24SRV

28SRV



14' 7" to Pantry

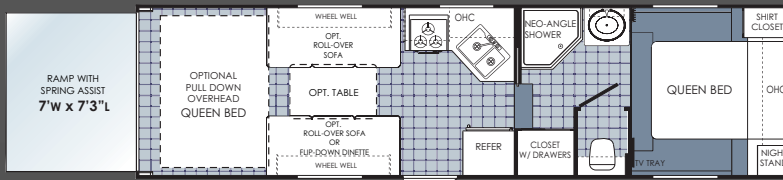
12' 3" to Galley

- Open Cargo Area Floorplan
- Payload Capacity 4726 lbs.

12' 3" to Wall

- Enclosed Garage with Sealed Door and Insulated Wall to Cargo Area
- Payload Capacity 3936 lbs.

Fifth Wheels



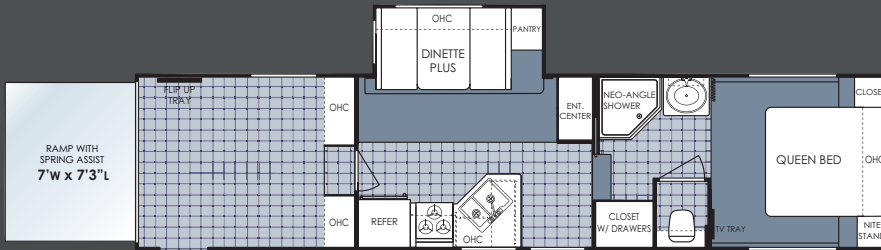
14' 7" to Refer

12' 5" to Galley

26SRV-M5

- Open Cargo Area Floorplan
- Cargo Area Swing-Down Bed Optional
- Fold-a-Dinette/Sofas Optional

- Payload Capacity 4432 lbs.

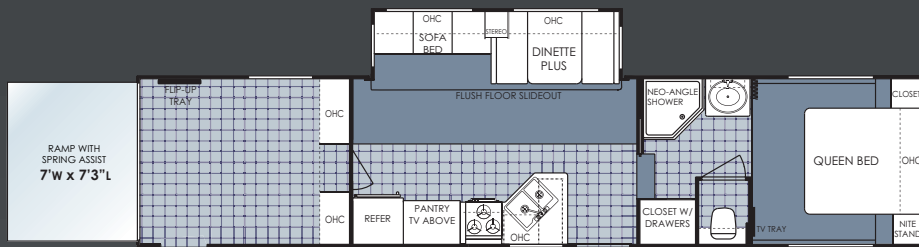


10' to Wall

32SRV-H5

- Enclosed Garage with Sealed Door and Insulated Wall to Cargo Area
- Bed Slide Available

- Payload Capacity 4650 lbs.

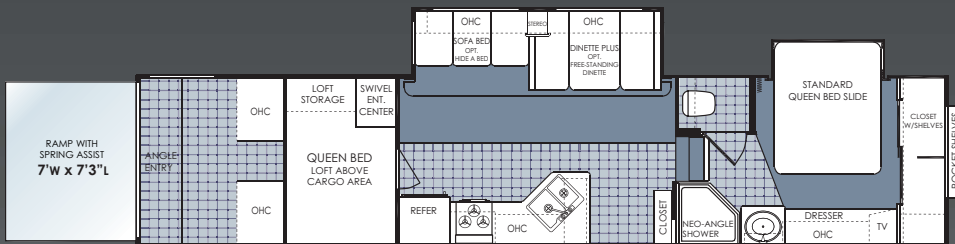


10' to Wall

35SRV-H5

- Enclosed Garage with Sealed Door and Insulated Wall to Cargo Area
- Bed Slide Available

- Payload Capacity 4642 lbs.



12' to Wall

36SRV-H5

- Triple Axle Design
- Enclosed Garage with Sealed Door and Insulated Wall to Cargo Area
- Bed Slide Standard
- Lowered Rear Door with Angled Entry
- Standard Queen Bed Loft

- Payload Capacity 4492 lbs.

Standard & Optional Features

Performance Plus Package - Standard

13.5 BTU Ducted roof air conditioning
TV antenna with satellite prep
Winner's Circle A&E patio awning
Cargo area tie downs
Full walk on roof
Exterior storage lights
Hitch light
Solid wood cabinet doors
6 Gallon gas/electric DSI water heater
Phone jack
AM/FM stereo with CD player
Three burner range with oven
Norcold double door gas/electric refrigerator
Solid wood, raised panel refrigerator front
Microwave oven
Premium high-rise galley faucet
Skylight over tub
Power roof vent in bath
104 gallon fresh water system (most models)

Exterior Construction

Chassis and Floor

I-beam cambered chassis
Al-Ko leaf spring axles with Ultra Lube hubs
Tandem axles with 4 wheel electric brakes
Large support outriggers w/solid continuous weld
5/8" Exterior grade tongue & groove plywood floor
Triple entry steps - welded to frame
Rear bumper with sewer hose storage
Powered flush floor living room slide-out
Rotocast holding tanks
Twin 30# LP bottles
LP bottle cover (TTs)
Walls - Laminated, Aluminum Frame Construction
Smooth *Filon* fiberglass
Polystyrene foam insulation
Full front fiberglass cap on H5's and full front ABS cap on M5's
Front wall lower diamond plate (TTs)
Tinted radius clamp ring windows
Slider windows on sides of slide
30" Radius entry door
Flush combo entry latch/dead-bolt lock
Rain gutter w/corner downspout
Radius corner exterior compartments
Patio light
Premium graphics package
Detachable 30 amp power cord

Roof

1 piece seamless EPDM rubber roof
5" Radius truss rafters on roof
Full walk-on roof with 3/8" decking
In ceiling A/C ducting

Cargo Area

"Grip Star" - cargo door flooring
Black and white checkered linoleum in cargo area
Cargo Area tie downs
Mini-blinds over windows

Interior Features

Décor

Premium living room slide fascia
Designer lighting above sofa and dinette
Dual cabinet doors in dinette
Night shades
Residential tile-like linoleum
Coat hooks (most models)
Brushed nickel cabinet door hardware
Living room carpet and pad (standard all models with slide rooms)
Oversized storage drawers with metal drawer guides in galley
Slide-out overhead cabinets (living room slide only)

Electrical/Appliances

12V demand water pump
Safety equipment: fire extinguisher, smoke/LP/CO detector
Hydro flame forced air, DSI furnace with wall thermostat
55 Amp converter with built in battery charger
110V duplex receptacles interior and exterior

Kitchen

Dual sink covers and stove cover
Range hood with 12V light and exhaust fan
44" Oversized booth "Dinette Plus" (Where possible)
Double bowl white acrylic sink
Spice rack below sink

Bath

ABS tub surround
Medicine cabinet with mirror
Shower curtain (TT's)
Glass shower door (neo-angle shower models)
Towel bar with coat hooks
12V power exhaust roof vent in bath
GFI protected 110V duplex receptacle
Theftford toilet

Bedroom

Innerspring mattress
TV tray/cable TV hook-up
Lift-up bed with storage below
Bedroom carpet with pad (fifth wheels)
Designer reading lights in bedroom
Décor coordinated bedspread
Décor coordinated headboard
2 Pillows on queen bed

SRV - Options

Generator Prep
Onan Generator installed
Fuel pump station with 30 gallon fuel tank and 6' fuel hose and nozzle
Bedroom slide (32SRV, 35SRV) Std - 36SRV
Pull-down queen bed in cargo area (travel trailers)
Folding roll-over sofa with table in cargo area (travel trailers)
Diamond plate or rubber diamond plate flooring in cargo area
Recessed side floor lights (Door side only)
Exterior security lights
Screen door in cargo area
Enclosed & insulated underbelly
Additional R7 Poly-Air roof insulation package
15,000 BTU AC in place of 13.5 BTU A/C
Fantastic vent fan in cargo area
12v heat pad on holding tanks (N/A Canada)
Aluminum rims
Detachable roof access ladder
Shock absorbers (H5 fifth wheels)
Electric front jacks (fifth wheels)
Exterior Spray-Away wash station
Exterior barbecue grill
10 gallon gas/electric water heater with DSI

*See dealer for all available options



**THE INDUSTRY'S
Best Warranty
By Far!**

We're so confident in the design and construction of our products that they are covered by Thor's Limited Warranty program.*

Your warranty includes:

- * One Year Bumper to Hitch Limited Warranty
- * Two Year Structural and Appliance Limited Warranty

*See owner's manual for complete warranty details.



**Why A Thor
Product Is Your
Best RV Value:**

Thor Industries, Inc., listed on the New York Stock Exchange, proudly traces its history back over seventy years to the pioneering days of the RV industry with the founding of Airstream, the industry's oldest and most renowned brand.

Our total commitment to quality and our philosophy of putting our customers first has led to our continuous growth. Today, Thor is the largest builder of RVs. Thor's strong financial condition and years of solid growth are your assurance that we will be here to serve you for years to come. We think this extra peace of mind is important when you are making a significant investment. Because our customers are always #1 with us, we work harder than other manufacturers to satisfy you.



Weights & Measurements

Model	24SRV	28SRV	26SRV-M5	32SRV-H5	35SRV-H5	36SRV
Cargo Area Length	12'3" plus	12'	12'2" plus	10'	10'	12'
Exterior Width	8ft.	8ft.	8ft.	8ft.	8ft.	8ft.
Exterior Height	11'6"	11'4"	12'3"	12'9"	12'9"	12'10"
Exterior Length	26'10"	33'7"	31'10"	36'	39'5"	39'5"
Hitch Dry Weight	1058	1204	1898	1716	2112	2655
GVWR	11176	11176	12192	14400	15500	15500
Unloaded Vehicle Weight	6450	7244	7760	9750	10858	11808
Net Cargo Capacity	4726	3932	4432	4650	4642	4492
*Fresh Water Capacity	104	104	104	104	90	104
Grey Water Capacity	37	37	37	37/37	37/37	37/37
Black Water Capacity	37	37	37	37	37	37
Tire Size	ST225/75R15(D)	ST225/75R15(D)	ST225/75R15(D)	LT235/85R16(E)	ST235/80R16(E)	ST225/75R15(D)
Furnace Size (BTU's)	30000	30000	30000	34000	34000	34000

Product information and specifications in this brochure were as accurate as possible at time of printing. Since we continually strive to improve our products, actual products may differ. Prices and specifications are subject to change without notice. All capacities are approximate and dimensions are nominal. Some features shown are optional and may be different or unavailable in Canada.

Vehicles are designed for recreational use only and not intended for use as a primary residence.

Vehicle loading - Every effort has been made to provide the greatest number of options for the recreational vehicle owner. Along with these choices comes the responsibility to manage the loads that are imposed by the choices that they remain within the manufacturer's specified chassis weight limits. Do not overload the recreational vehicle. **Dry weights** based on standard features - Some optional equipment not included. **Net carrying capacity (NCC)** is determined by subtracting unloaded vehicle weight (UVW) from gross vehicle weight (GVWR) and includes fluids, options and cargo. **Liquid capacities and weights are approximations only.** **Warning** - This information is intended as a guide only. Weights of individual vehicles may vary. Consult your owner's manual for complete loading, weighing and towing instructions. *Fresh water capacities include capacity of water heater.

WC1rev2-05

©2005 Thor Industries, Inc.

www.winnerscircle-rv.com

A Division of Dutchmen Manufacturing, Inc.
2164 Caragana Court • Goshen, IN 46526
574-534-1224 • Fax 574-975-0592

Your Local Dealer

Well-Equipped Cargo Areas



35SRV-H5



Sealed Cargo: Many models feature a sealed rear cargo area. The security door and wall are insulated to protect the living area of your SRV.



Screen Door: Winner's Circle's roll-away screen door is available as an option. The full width screen door mounts above the cargo door to let fresh air in and keep insects out.



Cargo Floor: Winner's Circle features three rows of reinforced tie down rings rated at 5,000 lbs. each. The standard vinyl flooring can be replaced with optional aluminum diamond-plate or durable anti-slip rubber diamond-plate flooring (shown).



Ladder: Winner's Circle features a fully decked walk-on roof. The removable aluminum ladder can be used with the cargo door open or closed.

Winner's Circle's cargo area is designed with the features and equipment you want in your next SRV. Winner's Circle is available in open or enclosed cargo areas. Enclosed cargo areas feature white laminated storage cabinets and durable, easy to clean vinyl wallboard with kick plate. Open cargo floorplans feature oak finish cabinets. Both styles include reinforced tie down rings, easy-clean stain resistant vinyl flooring, cargo lights and power outlets.

Winner's Circle features a premium bottom-hinged, spring-lift assisted cargo door. This creates one of the largest door openings in the industry - 7' wide by 7' 3" tall! The door has a 2500 lb. capacity and includes dual exterior cam locks and an anti-slip "Grip-Star" finish. Most models include a diamond-plate entry ramp extension (NA 36SRV).

Winner's Circle - The most functional cargo space in the industry.



Open Concept Floor Plans: The pull down overhead rear queen bed, and the convertible roll-over sofa and dinette turn your cargo area into extra living and sleeping space. The bed swings up the ceiling and the sofa and dinette fold against the wall when not in use giving you the storage space you need for your toys.



24SRV-TT

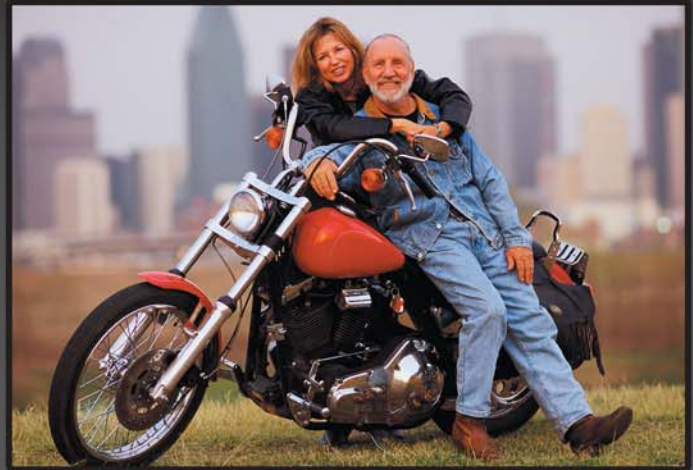
Winner's Circle



Generator: No hook-ups at your favorite recreation area? It's not a problem with Winner's Circle's optional *Onan Micro-quiet™* generator (available in gas or lp.) The vented compartment is insulated to reduce interior sound. Generator prep is also available as an option.



Fantastic Fan: A Fantastic Fan is available as an option for the cargo or living area of your SRV. The Fantastic Fan includes a thermostat and rain sensor.



10 Gallon Water Heater: The optional 10 gallon gas/electric water heater option allows for longer showers after a long day of play. The quick recovery water heater features Direct Spark Ignition. Just flip the switch to light the pilot.



104 Gallon Fresh Water Tank: Winner's Circle features one of the largest fresh water tanks in the industry. Our 104 gallon tank is the perfect size for a weekend of off road adventures (most models). Plus, 32' and above fifth wheels feature dual gray water tanks with a total capacity of 74 gallons.



Fuel System: Winner's Circle's optional 30 gallon fuel station is a must have for off-road enthusiasts. It features a 12 volt fuel pump and a 6 foot hose with nozzle.



Winner's Circle is more than an RV with a garage. It is a dual purpose trailer that incorporates the best features available from RV's and Cargo trailers to create the ultimate Sport Recreational Vehicle - SRV.

Premium amenities, large living areas, properly equipped cargo areas and optional dry camping accessories make Winner's Circle SRV's your best choice when it comes to your next SRV.

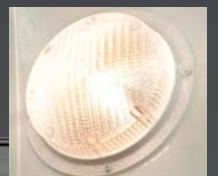
So, enjoy traveling in a Winner's Circle SRV, and remember, you can take it with you!



Premium Wheels & Hubs: Winner's Circle features Ultra-Lube hubs and radial tires. Ultra-lube hubs allow for easy wheel bearing lubrication. Plus, you can customize your Winner's Circle with the optional aluminum rim package.



Exterior Wash Station: Cleaning up after a long day of fun is easy with the optional "Spray-away" wash station. It includes hot and cold water and a 6 ft. quick-connect coil hose with sprayer.



Exterior Lighting: Winner's Circle features a standard patio light, hitch light and rear overhead lights. Optional recessed side flood lights as well as round security lights allow your day of fun to extend into night.



Luxurious Living Areas

There is more to a SRV than the cargo area. Winner's Circle interiors are designed for comfort and value. Winner's Circle is loaded with features that are usually found as upgrades on the competitor's products. Hardwood cabinet doors, residential furnishings, full size slide rooms and designer decors are just a few of the standard features that make Winner's Circle your best SRV value.



Spacious Kitchen: Large kitchens with an abundance of countertop and storage space are found on all Winner's Circle floorplans. A double door refrigerator, large microwave and large double bowl sink are just some of the standard features you get with Winner's Circle.



Residential Cabinetry: Winner's Circle features "RV 800" residential steel roller drawer glides. They open and close with ease and are designed for years of reliable use.



Oversized Oven: This over-sized 22" oven with 3-burner range and stove cover is a standard feature. Plus, the range hood includes a 12V exhaust fan and built-in light.



Bedroom: Most Winner's Circle fifth wheels are available with a bedroom slide option, featuring a queen bed, large full width mirrored closet with shelf and a large chest of drawers with entertainment center.

