

2005
Denali

TRAVEL TRAILERS AND FIFTH WHEELS



Let Your Journey Begin

Denali

Let Your Journey Begin

The native people of the great Alaskan wilderness call the massive peak of Mount McKinley "Denali". Translated, Denali means "Great One".

Denali is also the name of the immense national park and nature preserve containing Mt. McKinley. At 6,000,000 acres, Denali National Park exemplifies Alaska's character as one of the world's last great frontiers for wilderness and adventure. It remains an untouched terrain of wildlife and glaciated mountains.

The grandeur and beauty of Denali National Park has inspired an entirely new line of recreational vehicles for 2005. Introducing *Denali* laminated travel trailers and fifth wheels. *Denali* will captivate your senses and deliver first-class features and comfort with unprecedented value.



Upgrade to Denali's "Executive Recliner Package". These European-style chairs swivel, recline and include ottomans.



29RK in Howland Taupe



Denali's free-standing dinette is a favorite option for those who don't need the sleeping space of the standard 44" "Dinette Plus".



Denali's kitchen is loaded with standard features that are usually found as upgrades on our competitors' products. Raised panel solid wood cabinet doors with brushed nickel hardware and over-sized drawers on residential steel roller drawer glides are standard. A large double door refrigerator, large microwave, 22" oven with 3-burner range and stove cover, and a large double bowl sink with high-rise faucet make Denali your best choice.



Denali's "Extend-a-Galley" countertop extension gives you more room to prepare the family meal. It stores under the bed when not in use. (optional)



This over-sized 22" oven with 3-burner range and stove cover is a standard feature. Plus, the range hood includes a 12V exhaust fan and built-in light.



Denali's double door refrigerator/freezer includes a raised panel hardwood insert.



Denali features "RV 800" residential steel roller drawer glides. They open and close with ease and are designed for years of reliable use.

Denali 2005 TRAVEL TRAILERS AND FIFTH WHEELS



Distinctive style and premium features make Denali stand out from the crowd. Featuring premium residential furniture, large picture windows with designer valances and fabric night shades, Denali sets the new standard in laminated Travel Trailers and Fifth Wheels. Plus, all slideout rooms feature large overhead storage cabinets, decorator lighting and a hardwood slide fascia. All windows in the slide room open for ventilation. Denali's 44" wide "Dinette Plus" includes interior and exterior doors to storage below the seat.



Most Fifth Wheels and most Travel Trailers feature a large "Neo-angle" corner shower with ABS surround, glass shower door and hand-held massage shower head. A large wardrobe cabinet with mirrored doors and two sweater drawers are standard on most Fifth Wheel floorplans.



35FL in
Howland Taupe



Denali features an AM/FM/CD player with surround sound cube speakers. An integrated DVD player is available as an upgrade.



Most Denali Travel Trailers and all high profile Fifth Wheels are available with a bedroom slide option, featuring a queen bed, large full width mirrored closet with shelf and a large chest of drawers with entertainment center. Denali gives you the storage you need for those extended vacations away from home. All Denali bedrooms include a designer master suite package with reading lights, headboard, pillows with shams, a bedspread and matching curtains. (35FL-H5 Fifth Wheel rear bedroom slide shown.)

Fold-n-Go Bunk System
 Here's a new feature – bunk beds that fold up against the wall to create a storage room in the 30-BH Travel Trailer floorplan. An extra 180 cubic feet of storage is created when the bunks are not in use. Add the optional Pac-n-Play door to the exterior for quick access to all of your camping equipment.



DÉCOR OPTIONS

- A = Feature Fabric
- B = Chairs and Dinette Seats
- C = Sofa and Chairs in Howland Taupe



Denali

Industry
Exclusive



Denali is designed for maximum storage. The Fifth Wheel's pass through compartment is one of the largest in the industry.

Tote-n-Tray Storage - An industry first!

Located in your travel trailer's "Storage Plus" compartment, the innovative Tote-n-Tray system maximizes storage for your family. The slide out system is mounted to the top of your compartment and includes two large storage tubs that are suspended from the slide out tray. Plus, the slide out tray doubles as a counter top and food preparation area. (optional)



Denali - Leading the Way in Innovation



Denali cares about the safety of your family. That's why all models come standard with a fire extinguisher, smoke, LPG and carbon monoxide detectors.



"Spray Away" exterior wash station includes hot and cold water controls, a removable coil hose and sprayer. (optional)



A 30 Amp marine grade detachable power cord stores in an outside compartment when not in use, saving valuable interior storage space.



Denali travel trailers include a diamond plate rock guard to protect your trailer front from the hazards of the road.



Pac-n-Play Storage -

Pac-n-Play storage is available on bunk house floorplans. The Pac-n-Play provides more storage for you. The bunks fold up to create a large storage area that's accessible from the exterior door. It's large enough for coolers, bikes, grills, golf clubs and more. (optional)



6-gallon gas/electric water heater with direct spark ignition (DSI) is standard.



Ultra-lube hubs are standard on Denali. This feature allows for easy wheel bearing lubrication.



The Industry's Best Warranty – By Far!

We're so confident in the design and construction of our products that they are covered by Thor's Limited Warranty program.

Your Warranty includes:

- Two Year Structural and Appliance Limited Warranty
- One Year Bumper to Hitch Limited Warranty

*See owner's manual for complete warranty details.

PREMIUM CONSTRUCTION

Walls

1. Laminated Filon fiberglass bonded walls
2. 1/8" wood backer
3. Welded aluminum frame
4. Polystyrene block foam R-7 insulation
5. Second layer of 1/8" wood backer with decorative wallboard
6. A & E patio awning
7. Tinted radius clamp-ring windows
8. Radius cornered baggage doors with lock and finger pull
9. High-profile – Full fiberglass cap; Mid-profile – Full ABS cap; Travel Trailers – Fiberglass wrap with lower diamond plate

Roof

10. Fully decked walk-on roof with one-piece EPDM rubber roof membrane - 12 year rubber warranty
11. 3/8" Structural Wood decking with 25 year warranty
12. Residential fiberglass insulation
13. 5" Tapered truss roof rafters
14. Ducted roof air conditioning

15. Rain gutter molding with corner downspouts
16. 13,500 BTU ducted air conditioning

Chassis

17. Steel I-beam frame with outriggers. Outriggers tie weight of sidewalls and floor into frame rails
18. Radial tires on Al-Ko leaf spring axles with Ultra-lube hubs
19. Extended pin box (most Fifth Wheel models)
20. Triple fold-away steps
21. Optional electric front jacks (M5 and H5 only)

Floor

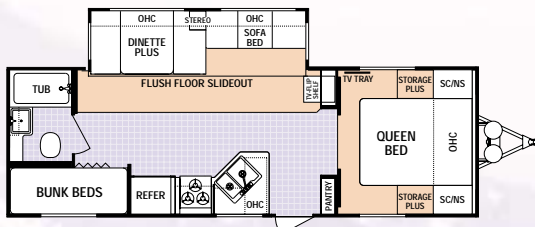
22. Polypropylene water resistant barrier attached to bottom of floor structure
23. 2" x 3" floor joists, 12" on center
24. Residential R-7 fiberglass insulation
25. One-piece 5/8" 5-ply tongue-and-groove, marine grade plywood floor
26. Residential tile-like linoleum
27. Residential carpeting
28. Optional heated and enclosed underbelly

Denali

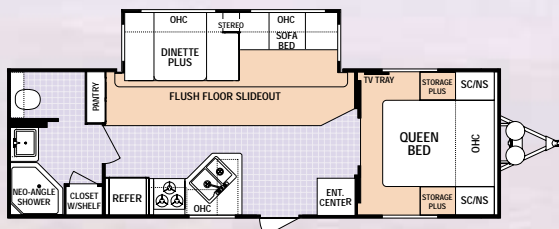
TRAVEL TRAILERS



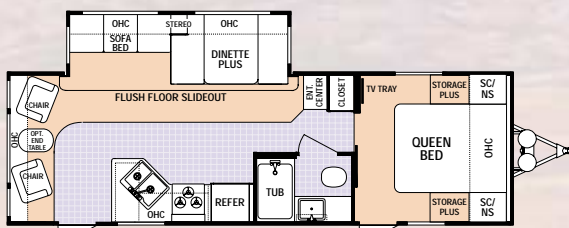
SEE OPTION DIAGRAMS ON FIFTH WHEEL PAGE



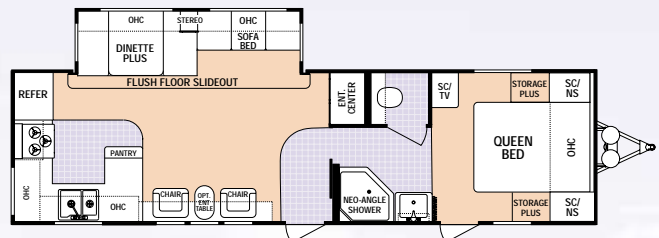
26BH-DSL Available option: T



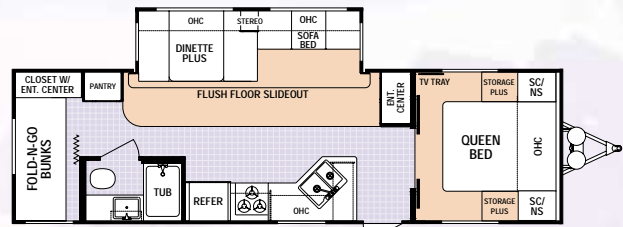
26FB-DSL



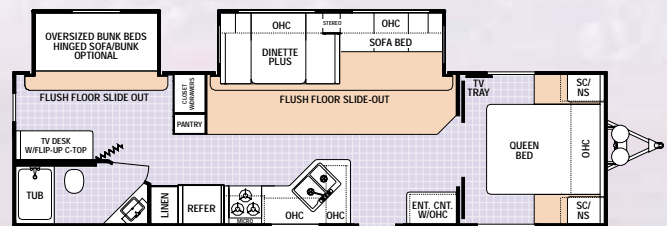
26RL-DSL



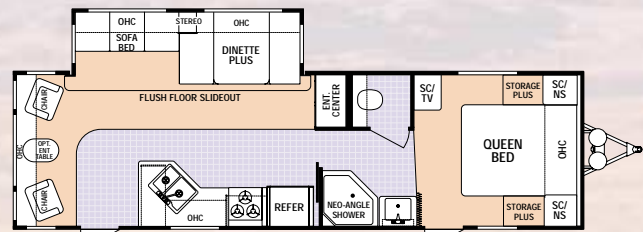
29RK-DSL Available option: M



30BH-DSL Available options: O, T



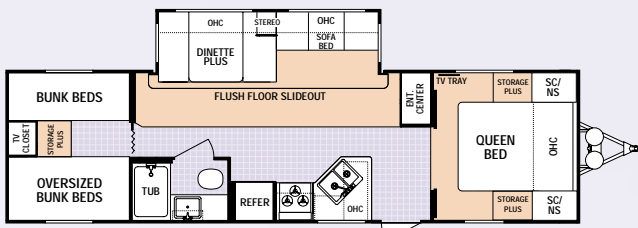
30BS-DSL Available option: T



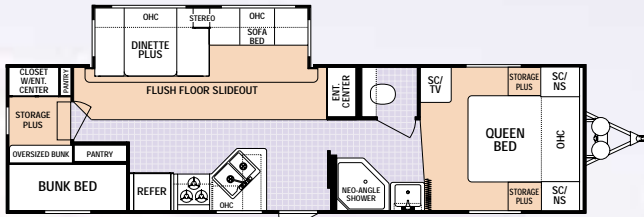
30RL-DSL Available option: M

TRAVEL TRAILERS	26BH-DSL	26FB-DSL	26RL-DSL	29RK-DSL	30BH-DSL	30BS-DSL	30RL-DSL	31BH4-DSL	31BK-DSL	31FK-DSL	35ES-DSL	36FK-DSL	38FB-DSL
Unloaded Vehicle Weight	6532	6546	6786	7390	7112	N/A	7368	7244	7564	7226	8394	8016	8324
Hitch Dry Weight	984	866	778	884	1086	N/A	1022	1104	1066	1294	1178	1394	1288
GVWR	9680	9680	9680	9680	9680	N/A	9680	9680	9680	9680	11176	11176	11176
Net Cargo Capacity	2656	2642	2402	1798	2076	N/A	1820	1944	1624	1962	2290	2668	2360
Length	28'5"	29'9"	29'9"	33'6"	31'9"	N/A	32'3"	33'3"	34'8"	33'0"	37'4"	37'7"	39'3"
Exterior Width	8'	8'	8'	8'	8'	N/A	8'	8'	8'	8'	8'	8'	8'
Exterior Height	11'0"	11'0"	11'0"	11'0"	11'0"	N/A	11'0"	11'0"	11'0"	11'0"	11'0"	11'0"	11'0"
Fresh Water Capacity	46	46	46	46	46	N/A	46	46	46	46	46	46	46
Grey Water Capacity	37	37	37	37/37	37	N/A	37	37	37/37	37/37	37/37	37/37	37/37
Black Water Capacity	37	37	37	37	37	N/A	37	37	37	37	37	37	37
Tire Size	■	■	■	■	■	N/A	■	■	■	■	■	■	■
Furnace Size (BTUs)	30000	30000	30000	34000	34000	N/A	34000	34000	34000	34000	34000	34000	34000

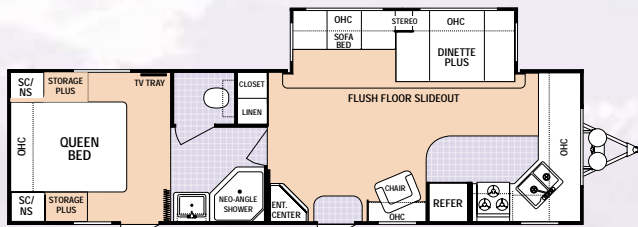
Tire Size : ■ = ST225/75R15(D)



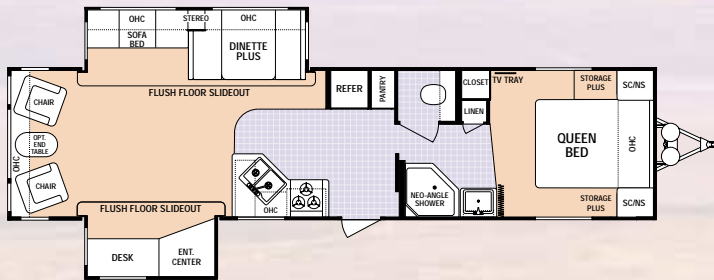
31BH4-DSL Available options: J, T



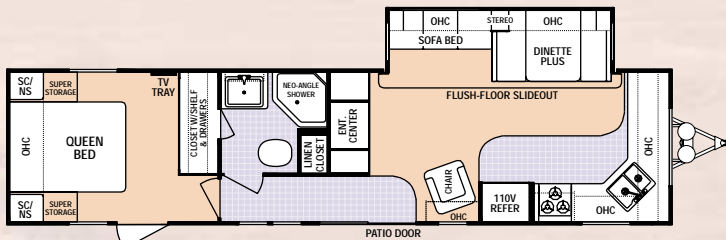
31BK-DSL Available options: D, M, T



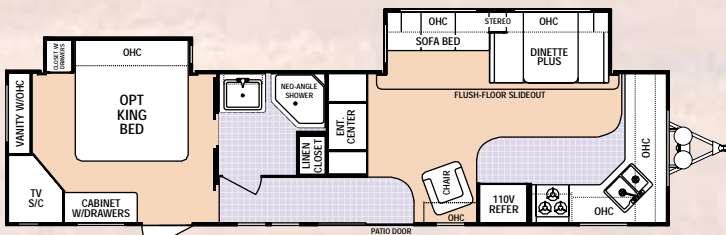
31FK-DSL Available option: M (Rear)



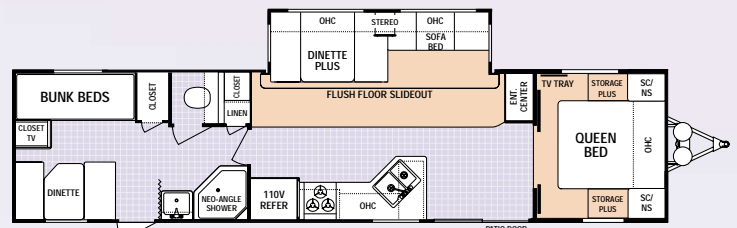
35ES-DSL Available option: M



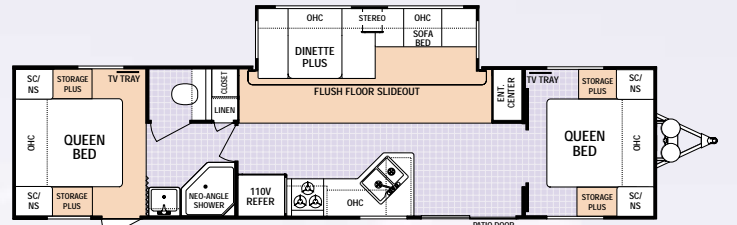
36FK-DSL



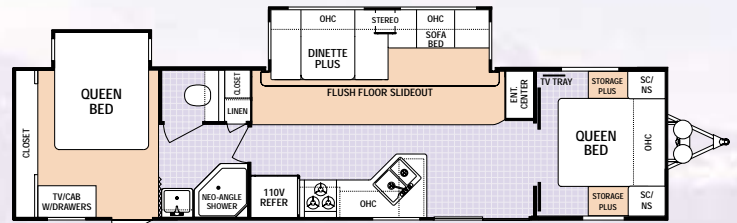
36FK-DSL Available with optional rear queen or king bed slide suite (king shown)



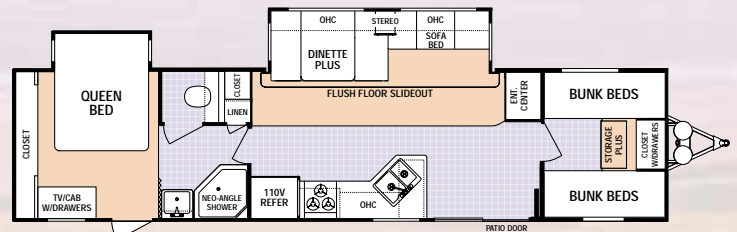
38FB-DSL Shown with standard front queen, rear bunks and dinette Available option: T



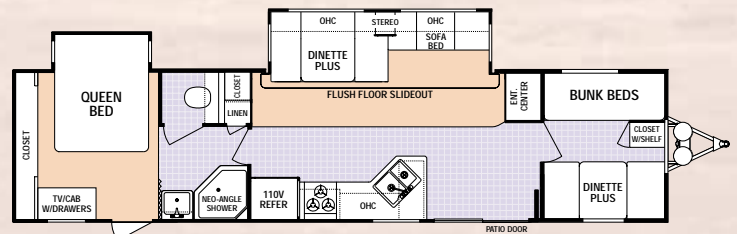
38FB-DSL Shown with option L (rear queen) & std. queen front bed



38FB-DSL Shown with option M (rear queen slide) & std. queen front bed



38FB-DSL Shown with option M (rear queen slide) & N (front quad bunks) Available option: T



38FB-DSL Shown with option M (rear queen slide) & J (front bunks/dinette) Available option: T

Vehicle Loading – Every effort has been made to provide the greatest number of options for the recreation vehicle owner. Along with these choices comes the responsibility to manage the loads that are imposed by the choices so that they remain within the manufacturer's specified chassis weight limits. Do not overload the recreation vehicle.

Net carrying capacity (NCC) determined by subtracting unloaded vehicle weight (UVW) from gross vehicle weight (GVWR) and includes fluids, options and cargo. Liquid capacities and weights are approximations only.

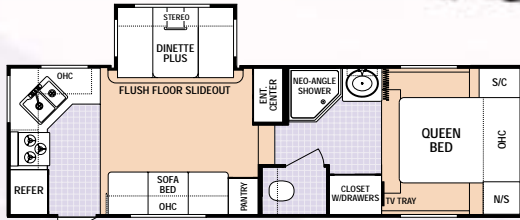
Warning: This information is intended as a guide only. Weights of individual vehicles may vary. Consult your owner's manual for complete loading, weighing and towing instructions.

Product information, specifications, and photography in this brochure were as accurate as possible at time of printing. Photographs may contain some features that are optional on your vehicle. Since we continually strive to improve our products, actual products may differ. Prices and specifications are subject to change without notice. All capacities are approximate and dimensions are nominal. Some features shown are optional and may be different or unavailable in Canada.

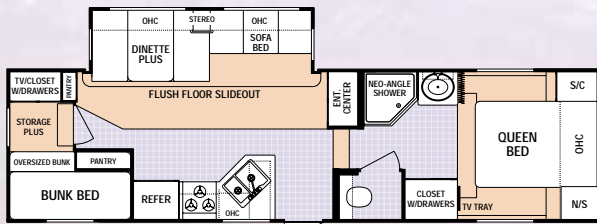
Vehicles are designed for recreational use only and not intended for use as a primary residence.

Denali

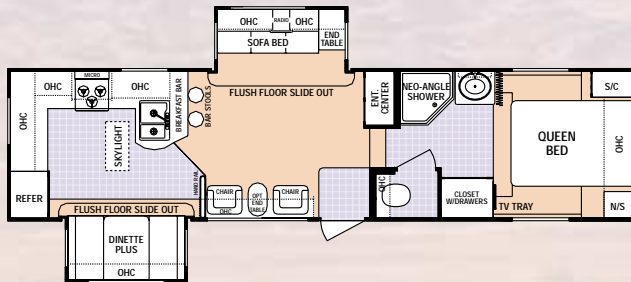
MID PROFILE FIFTH WHEELS



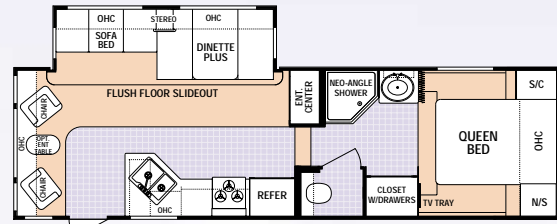
25RK - M5



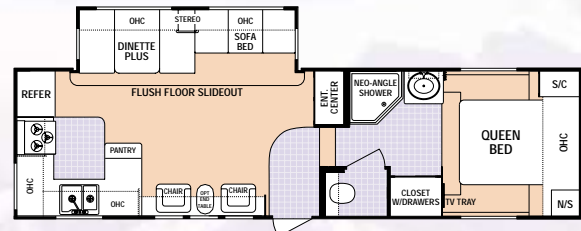
28BH - M5 Available options: D, T



31RG - M5



27RL - M5



28RK - M5



Take your cooking outside with Denali's exterior barbecue grill. (optional)

Vehicle Loading - Every effort has been made to provide the greatest number of options for the recreation vehicle owner. Along with these choices comes the responsibility to manage the loads that are imposed by the choices so that they remain within the manufacturer's specified chassis weight limits. Do not overload the recreation vehicle.

Net carrying capacity (NCC) determined by subtracting unloaded vehicle weight (UVW) from gross vehicle weight (GVWR) and includes fluids, options and cargo. Liquid capacities and weights are approximations only.

Warning: This information is intended as a guide only. Weights of individual vehicles may vary. Consult your owner's manual for complete loading, weighing and towing instructions.

Product information, specifications, and photography in this brochure were as accurate as possible at time of printing. Photographs may contain some features that are optional on your vehicle. Since we continually strive to improve our products, actual products may differ. Prices and specifications are subject to change without notice. All capacities are approximate and dimensions are nominal. Some features shown are optional and may be different or unavailable in Canada.

Vehicles are designed for recreational use only and not intended for use as a primary residence.

MID PROFILE

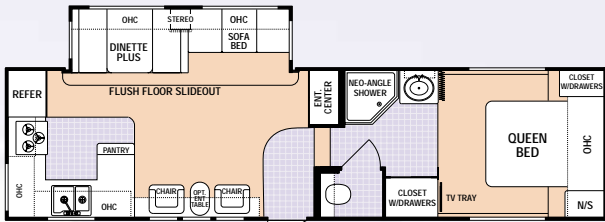
HIGH PROFILE

FIFTH WHEELS	25RK-M5	27RL-M5	28BH-M5	28RK-M5	31RG-M5	28RK-H5	29RL-H5	32CC-H5	33RL-H5	35BH-H5	35RL-H5	35FL-H5
Unloaded Vehicle Weight	7180	8052	8232	7822	N/A	8610	8462	8814	9392	9422	10462	9706
Hitch Dry Weight	1202	1614	1394	1372	N/A	1596	1596	1658	1770	1798	1964	2398
GVWR	10560	10560	10560	10560	N/A	10560	12192	12192	12480	12480	14400	14400
Net Cargo Capacity	2888	2016	1836	2738	N/A	3090	3730	2886	2596	3058	3446	4204
Length	28'8"	30'3"	32'6"	31'8"	N/A	33'	33'2"	33'3"	36'	37'3"	38'9"	38'9"
Exterior Width	8'	8'	8'	8'	N/A	8'	8'	8'	8'	8'	8'	8'
Exterior Height	12'2"	12'2"	12'2"	12'2"	N/A	12'2"	12'7"	12'7"	12'7"	12'7"	12'7"	12'7"
Fresh Water Capacity	46	46	46	46	N/A	46	46	46	46	46	46	46
Grey Water Capacity	37/37	37/37	37/37	37/37	N/A	37/37	37/37	37/37	37/37	37/37	37/37	37/37
Black Water Capacity	37	37	37	37	N/A	37	37	37	37	37	37	37
Tire Size	■	■	■	■	N/A	■	■	■	●	●	●	●
Furnace Size (BTUs)	30000	34000	34000	34000	N/A	34000	34000	34000	34000	34000	34000	34000

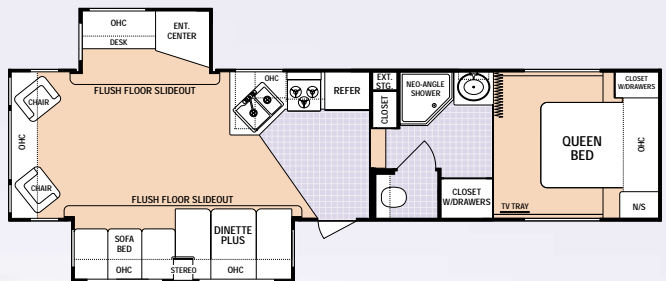
Tire Size : ■ = ST225/75R15(D) ● = ST235/80R16(E)

Denali

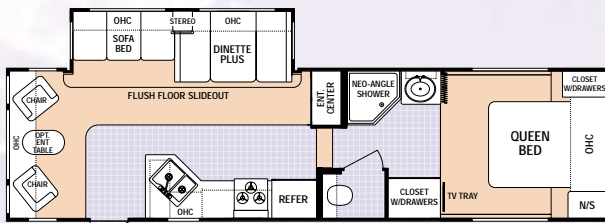
HIGH PROFILE FIFTH WHEELS



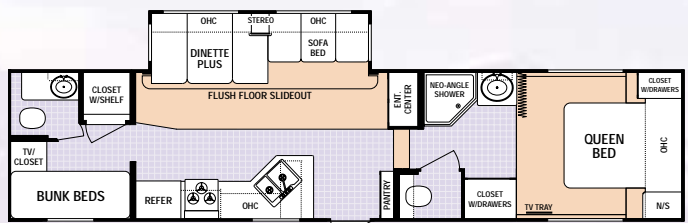
28RK-H5 Available option: K



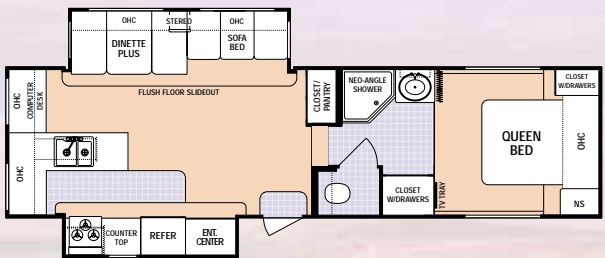
33RL-H5 Available option: K



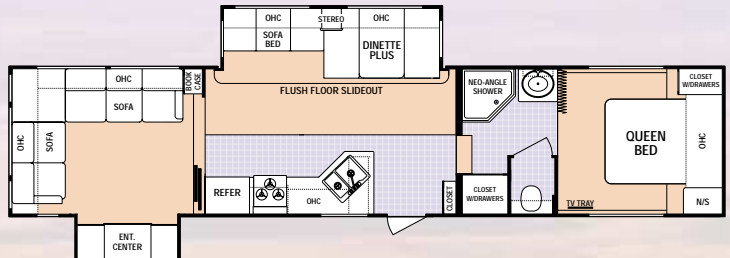
29RL-H5 Available option: K



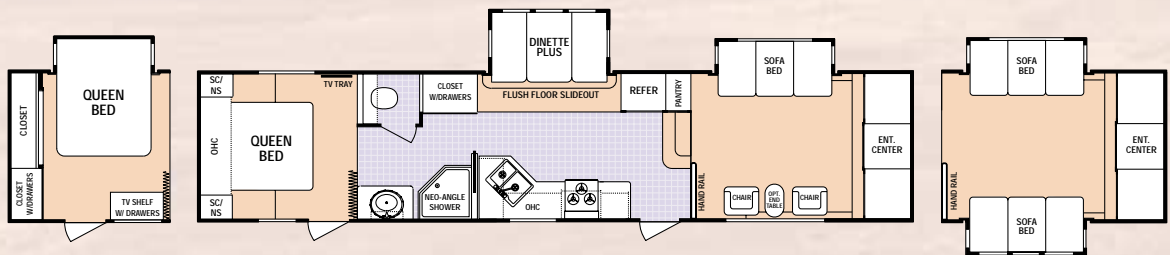
35BH-H5 Available options: J, K, N, T, X



32CG-H5 Available option: K



35RL-H5 Available option: K

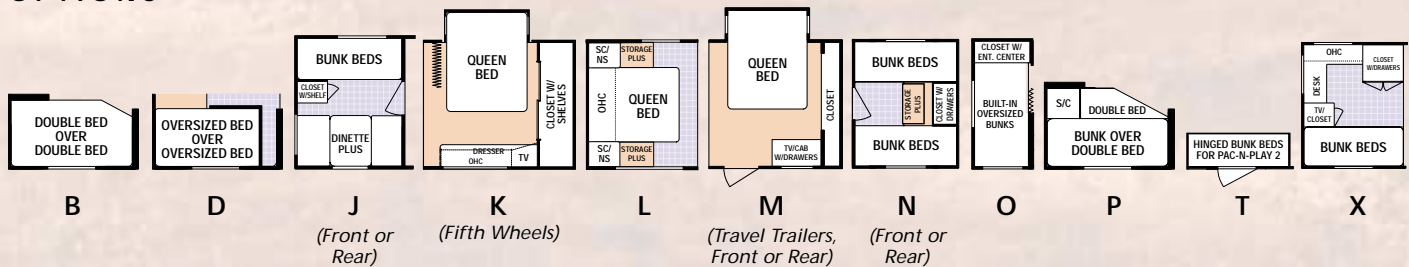


OPTION M
Rear queen bed slide

35FL-H5

OPTION
Front lounge second slide

OPTIONS



B

D

(Front or Rear)

K

(Fifth Wheels)

L

(Travel Trailers, Front or Rear)

N

(Front or Rear)

O

P

T

X

Denali 2005 TRAVEL TRAILERS AND FIFTH WHEELS

PREMIUM STANDARD FEATURES

Compare these features against the competition. We are sure you will agree that Denali is your best RV value.

STANDARD DENALI PACKAGE

- Bedroom carpet with pad
 - Designer reading lights in bedroom
 - Décor coordinated bedspread
 - Décor coordinated headboard
 - 2 Pillows on queen bed
 - Premium living room slide fascia
 - Solid wood, raised panel cabinet doors
 - 30" Radius entry door (most floorplans)
 - Designer lighting above sofa and dinette
 - Slider windows on sides of slide
 - Solid wood, raised panel refer front
 - Premium high-rise galley faucet
 - Dual cabinet doors in dinette
 - Phone jack/data port
 - Premium graphics package
 - Hitch light
 - Exterior storage light
 - Dual sink covers and stove cover
 - Night shades
 - 6 Gallon gas/electric DSI water heater
- *See dealer for available options*

EXTERIOR CONSTRUCTION

Chassis and Floor

- I-beam cambered chassis
- Al-Ko leaf spring axles with Ultra Lube hubs
- Tandem axles with 4 wheel electric brakes
- Large support outriggers w/solid continuous weld
- 5/8" Exterior grade tongue & groove plywood floor
- Triple entry steps - welded to frame
- Rear bumper with sewer hose storage
- Powered flush floor living room slide-out
- Rotocast holding tanks
- Twin 30# LP bottles
- LP bottle cover (TTs)

Walls - Laminated Aluminum Frame Construction

- Welded aluminum frame
- Polystyrene foam insulation

- Smooth Filon fiberglass
- Front wall lower diamond plate (TTs)
- Full front fiberglass cap on H5s and full front ABS cap on M5s
- Tinted radius clamp ring windows
- Rain gutter w/corner downspout
- Flush combo entry latch/dead-bolt lock
- Radius exterior "Storage Plus" compartments (where possible)
- Detachable 30 amp power cord
- Patio light

Roof

- 1 piece seamless EPDM rubber roof (12 year rubber warranty)
- 5" Radius truss rafters on roof
- Full walk-on roof with 3/8" decking
- In ceiling A/C ducting

INTERIOR FEATURES

Décor

- Residential tile-like linoleum
- Coat hooks (most models)
- Brushed nickel cabinet door hardware
- Living room carpet and pad (standard all DSL models)
- Oversized storage drawers with metal drawer guides in galley
- Slide-out overhead cabinets (living room slide only)

Electrical/Appliances

- 12V demand water pump
- Safety equipment: fire extinguisher, smoke/LP/CO detector
- Hydro flame forced air, DSI furnace with wall thermostat
- 55 Amp converter with built in battery charger
- 110V duplex receptacles interior and exterior

Kitchen

- Norcold double door gas/electric refrigerator

- Range hood with 12V light and exhaust fan
- 44" Oversized booth "Dinette Plus"
- Double bowl white acrylic sink
- Spice rack below sink

Bath

- ABS tub surround
- Medicine cabinet with mirror
- Shower curtain
- Glass shower door (neo-angle showers)
- Towel bar with coat hooks
- 12V power exhaust roof vent in bath
- GFI protected 110V duplex receptacle
- Thetford toilet

Bedroom

- Innerspring mattress
- TV tray/cable TV hook-up
- Overhead cabinets with shelf
- Lift-up bed with storage below

STANDARD COMFORT PACKAGE

- 13.5 BTU roof air conditioning
- Microwave oven
- A&E patio awning
- Skylight over tub
- AM/FM stereo with CD player
- Three burner range with oven
- TV antenna with satellite prep



Why A Thor Product Is Your Best RV Value:

Thor Industries, Inc., listed on the New York Stock Exchange, proudly traces its history back over seventy years to the pioneering days of the RV industry with the founding of Airstream, the industry's oldest and most renowned brand. Our total commitment to quality and our philosophy of putting our customers first has led to our continuous growth. Today, Thor is the largest builder of RVs. Thor's strong financial condition and years of solid growth are your assurance that we will be here to serve you for years to come. We think this extra peace of mind is important when you are making a significant investment. Because our customers are always #1 with us, we work harder than other manufacturers to satisfy you.

©2004 Thor Industries, Inc.

DenR1.11/04

Denali

A division of Dutchmen Manufacturing
2164 Caragana Court ■ Goshen, IN 46526
Sales: 574.534.1224 ■ Fax: 574.533.3807

Your Denali Dealer:



www.denali-rv.com