

2004 Skamper



Lightweight Expandables, Travel Trailers and Fifth Wheels

Kodiak Expandables



60 x 80 queen beds in bunks

Oversized dinettes with reversible cushions

5" thick bunk cushions

Model 23BH is shown in Jagged Rose

Some features shown may be optional.

Expandable Comfort

For active families on the go, Kodiak expandable travel trailers add sleeping space without the additional length and weight that come with traditional travel trailers. And, the lightweight design and aerodynamic profile make the Kodiak easy to tow.

From the ground up, it's easy to see that Kodiak offers the most value for your dollar. The fully laminated, all aluminum superstructure rests on a European style ultra-lightweight frame. Fiberglass exterior walls and rubber-lined roof are designed for years of enjoyable use. The expandable beds feature CAVLAR 2000 tents that include a full 5-year warranty. The Kodiak rides on Al-Ko rubber torsion axles that give it an "Independent Suspension" style ride. You won't find all these features on the competition.

The interior of the 2004 Kodiak is our best looking ever. The designer décors with luxurious fabrics, raised panel upper cabinet doors, and Congoleum vinyl flooring make the Kodiak your best choice when it comes to expandable travel trailers.

But the value doesn't stop there. The kitchen in the Kodiak is loaded with features, including a Norcold refrigerator, a 3-burner LP range, a double bowl composite sink with a high-rise faucet, and abundant storage.

So if you are looking for the best built, feature-packed lightweight expandable, look no further.

Choose Kodiak from Skamper.
The original ultra-light travel trailer.



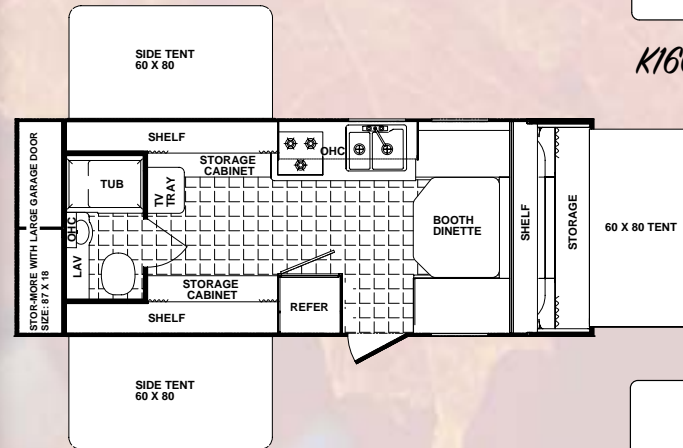
Model 23BH is shown in Jagged Rose

Some features shown may be optional.

Kodiak Expandables

Kodiak Standard Exterior Features

- 2-20 lb LP bottles with ABS cover
- 26" radius entry door
- ABS wheel wells
- Tandem axles with 4-wheel electric brakes (most models)
- Welded aluminum laminated superstructure (roof, floor and walls)
- Norco lightweight frame
- Al-Ko rubber torsion "independent suspension" axles
- ABS fender skirts
- Corrosion-free laminated Darco underbelly
- EPDM one-piece seamless rubber roof
- Flush combo entry latch / deadbolt lock
- High-end designer graphics
- Rain gutter with corner down spouts
- Rear bumper and corner guards
- Sand pads on jacks
- Single entry step
- Tinted radius clamp ring windows
- Exterior step light with switch
- Entry assist handle at door
- Break-away trailer switch
- 120 volt exterior outlet
- Key-locking "Easy Latch" tent doors
- Trash bag holder
- TV shelf
- 60 x 80 queen beds in tents
- Roll-over sofa bed



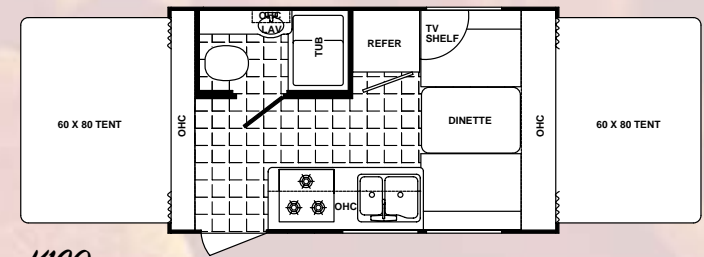
K21TT



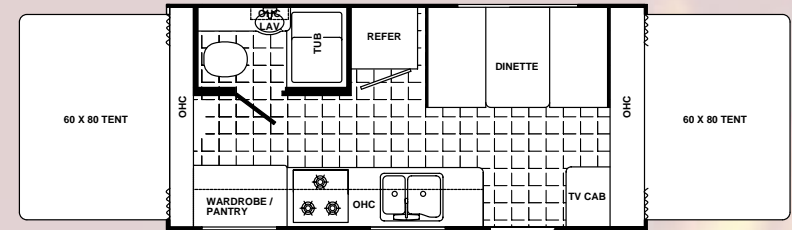
Kodiak's
key locking
"Easy Latch"
tent door.

Kodiak Standard Interior Features

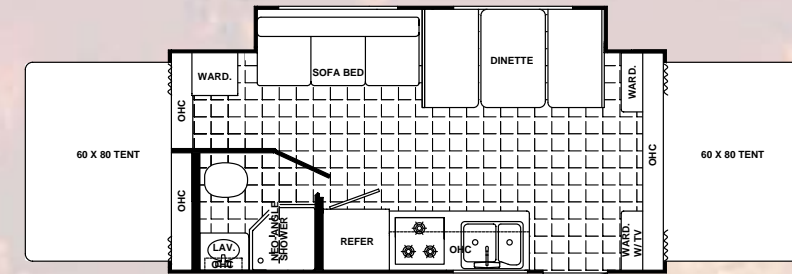
- 5" thick, reversible dinette seats
- Bathroom medicine cabinet (not all models)
- Designer window treatments
- Double bowl, white composite sink with high-rise faucet and dual sink covers
- Fiberlink bathtub
- Shower curtain
- Glass décor light over dinette table
- Mini blinds throughout
- Power roof vent in bathroom
- Residential tile-like linoleum



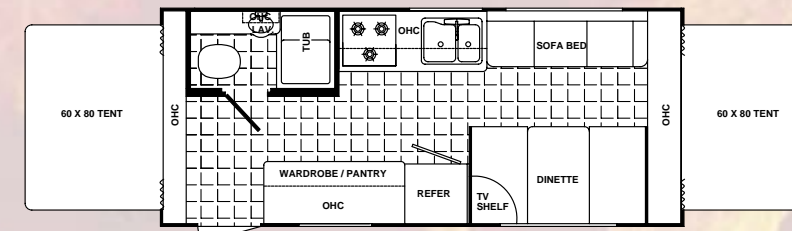
K160



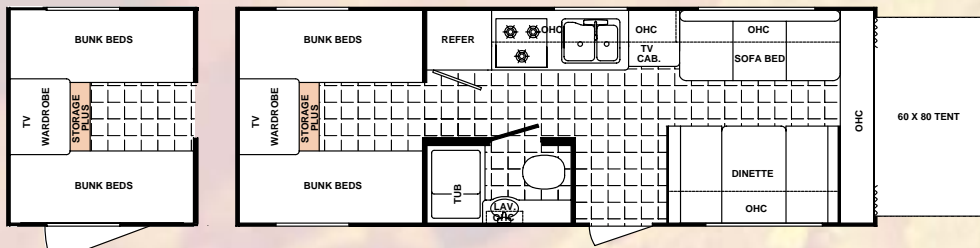
K195



K214

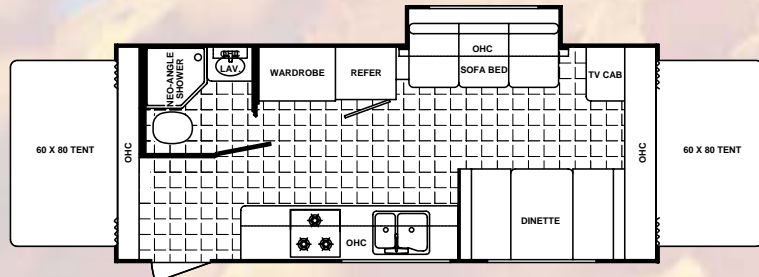


K215

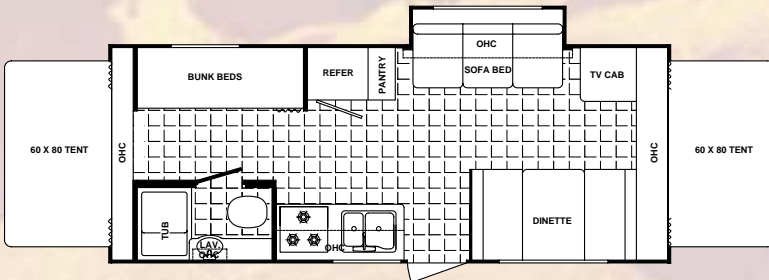


PAC-N-PLAY OPTION

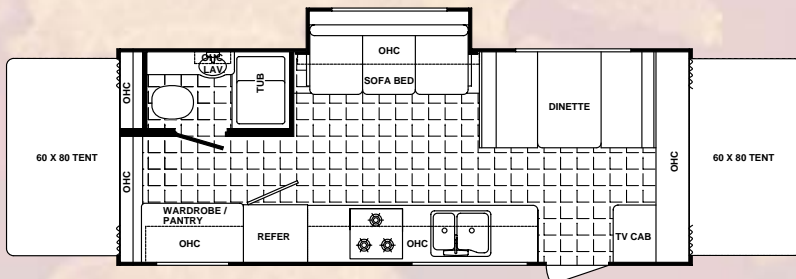
K25QB



K235



K23BH



K236 Coming Soon!

Décor Selections for Kodiak and Skamper



Jagged Rose



Meadow Blue



Ocean Green

Kodiak Standard Appliances and Electrical

- 19M BTU forced air DSI furnace with wall thermostat
- Ducted heat
- 3 burner high-output range
- 30 amp power cord with storage compartment
- 6 gallon gas water heater with bypass
- Demand water pump
- 12 volt interior lights with wall switch and switch on light
- Fire extinguisher
- LPG leak detector
- Norcold single door gas / electric refrigerator
- Patio light
- Pre-wired for air conditioning
- Pre-wired for cable TV
- Pre-wired for stereo
- Range hood with 12 volt light & exhaust fan
- Smoke detector
- Solid state converter with built-in battery charger
- Systems monitor panel

Kodiak Optional Features

- Kodiak Pack Group:
 - 13.5 air conditioning with wall thermostat
 - AM / FM / CD player with four speakers
 - A&E 8300 series awning
 - TV antenna with cable prep
 - Microwave
 - Spare tire with cover
 - Bunk end lights
- 6 cubic feet double door refrigerator
- DSI water heater (gas / electric)
- Electric slide out motor
- Heated waste holding tanks (3)
- Oven with range
- Safety glass
- Spray-away wash station
- Stove cover
- Tub surround
- Water filter system

Skamper 8' Travel Trailers

With floorplans ranging from 19 to 30 feet, Skamper is sure to have the travel trailer that's right for your family. Filled with features and value, the 2004 Skamper is the standard by which all other lightweight travel trailers are judged.

Our Norco ultra lightweight chassis, Al-Ko rubber torsion axles with easy lube hubs, and fully laminated aluminum superstructure (floor, walls and roof) make the Skamper lightweight and easy to tow.



Raised panel upper cabinet doors

Brushed nickel hardware

Congoleum residential vinyl flooring

The 25BH-SL features a large kitchen with storage pantry and oversized drawers.

Optional electric side motors are available on Skamper 8' travel trailers.



Large slider windows

Roll-over sofa bed

Model 25BH-SL is shown in Meadow Blue

Some features shown may be optional.

The Original Lightweight Travel Trailer

Designer interiors with residential window treatments, luxurious fabrics and upgraded furniture are just some of the features that make the Skamper stand out.

Just because it is a lightweight travel trailer doesn't mean that it has to be light on storage. The Skamper is designed to let you take everything you need on the road with you. Skamper includes generous amounts of counter and cabinet space, pass through "Storage Plus" compartments, and 40" wide dinette seats. Plus, some models include the optional "Pac-N-Play" side storage compartment or the "Stor-More" rear storage garage for all of your camping gear.

Just compare the design, features, and equipment on the 2004 Skamper to the competition and you will find that the Skamper is your best choice when it comes to lightweight travel trailers.



*Pac-N-Play
option*



*Designer
reading lamps*

*Island queen bed
with décor-coordinated
bedspread*

Choose the Pac-N-Play option available on floorplans with bunks to maximize your exterior storage. It's large enough to store bikes, lawn chairs and coolers.



*Storage
garage*

Models 26RG and 29RG feature a 93" x 18" storage garage. Wire shelves and peg board are standard.

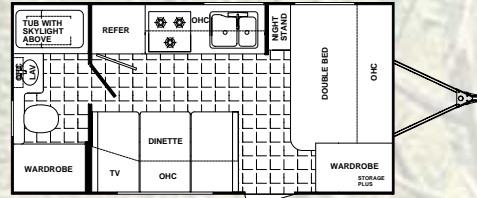


Skamper Standard Exterior Features

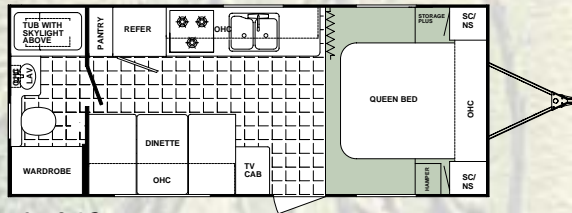
- Two 30 lb LP bottles with ABS cover
- 26" radius entry door
- ABS wheel wells
- Tandem axles with 4-wheel electric brakes
- Welded aluminum laminated superstructure (roof, floor and walls)
- Al-Ko rubber torsion "independent suspension" easy lube axles
- ABS fender skirts
- Corrosion free laminated darco underbelly
- EPDM one-piece seamless rubber roof
- Flush combo entry latch / deadbolt lock
- High-end designer graphics
- Norco lightweight frame
- Ozite carpet in pass through storage areas
- Rain gutter with corner down spouts
- Rear bumper and corner guards
- Roof ducted for air conditioning
- Single entry step
- Tinted radius clamp ring windows
- Window in bathroom (most models)
- Step light with switch
- Entry assist handle at door
- Break-away trailer switch
- 120 volt exterior outlet

Skamper Standard Interior Features

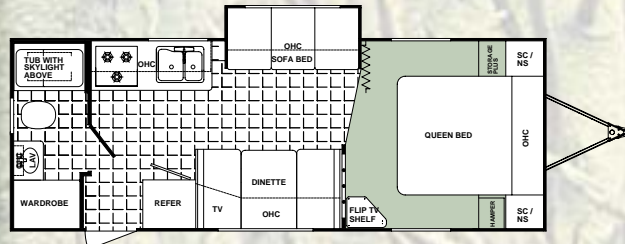
- 5" thick, reversible dinette seats
- Bathroom medicine cabinet (most models)
- Bedroom carpet
- Clothes hamper/laundry basket with access to Storage Plus
- Color-coordinated bedspread
- Designer window treatments
- Double bowl, white acrylic sink with high-rise faucet and dual sink covers
- Fiberlink bathtub
- Shower curtain
- Glass décor light over dinette table



S19FB



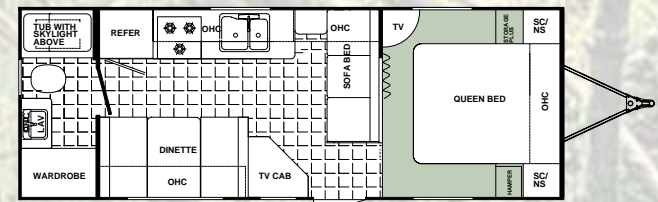
S23FB



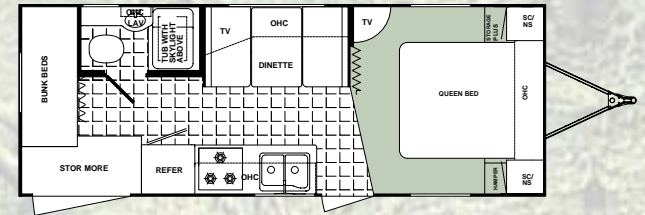
S24RB-SL

- Mini blinds throughout
- Pin-up lights in bedroom (some models)
- Power roof vent in bathroom
- Residential tile like linoleum
- Skylight in bathroom
- Trash bag holder
- Tub surround
- TV Shelf

See décor selections on Kodiak floorplan page.

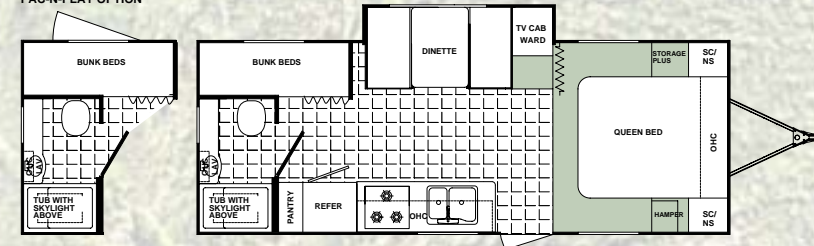


S25FQ

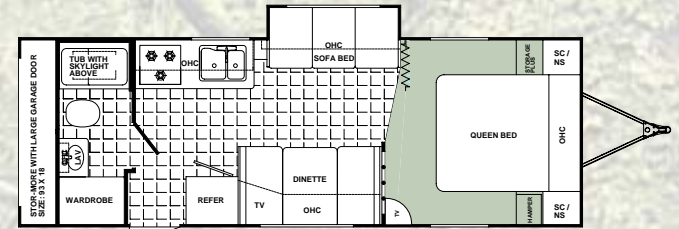


S25BG

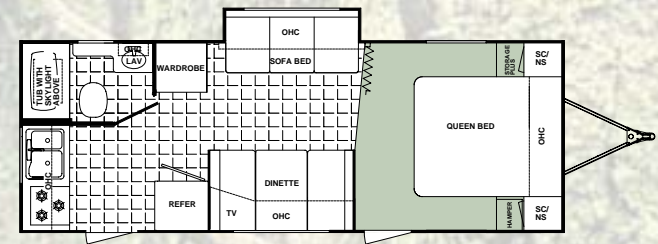
PAC-N-PLAY OPTION



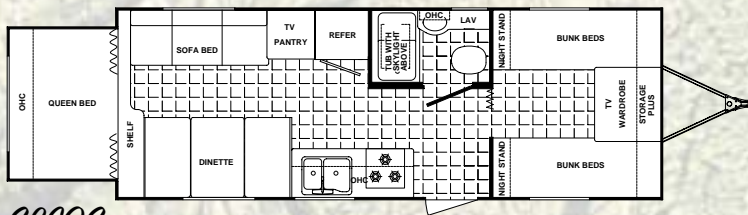
S25BH-SL



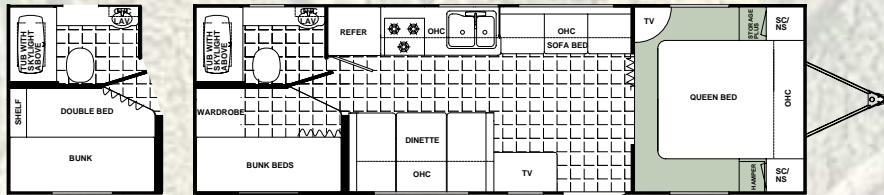
S26RG-SL



S26RK-SL

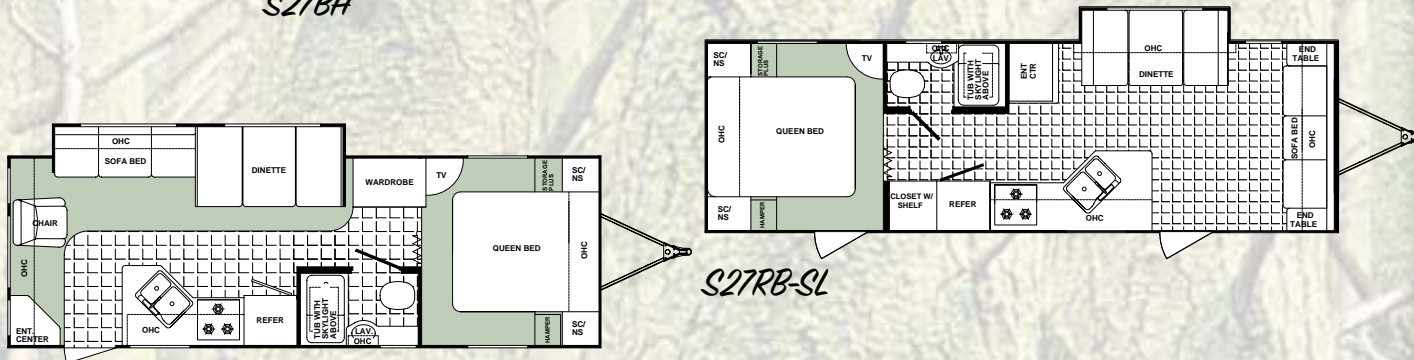


S26QS



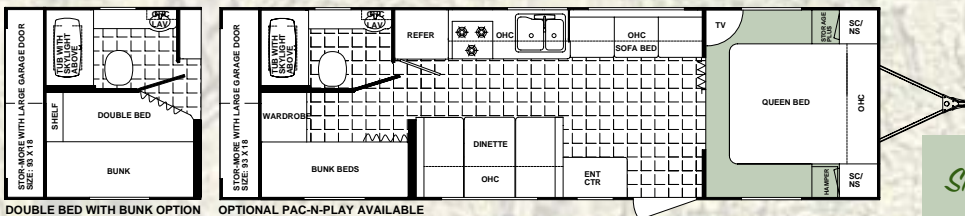
S27BH

OPTIONAL PAC-N-PLAY AVAILABLE



S27RB-SL

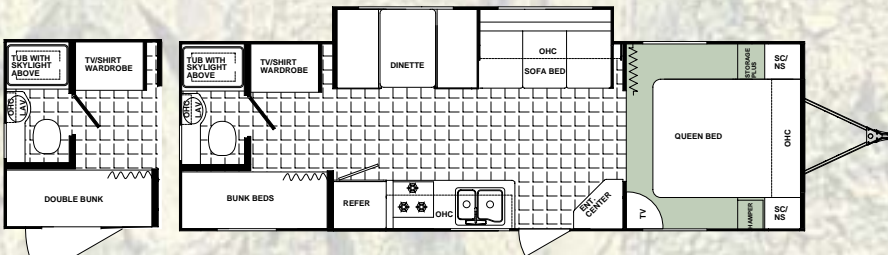
S28RL-SL



DOUBLE BED WITH BUNK OPTION

OPTIONAL PAC-N-PLAY AVAILABLE

S29RG



PAC-N-PLAY OPTION

S30BH-SL

- Fire extinguisher
- LPG leak detector
- Norcold double door gas/electric refrigerator
- Patio light
- Pre-wired for air conditioning
- Pre-wired for cable TV and stereo
- Range hood with 12 volt light, exhaust fan
- Smoke detector
- Solid state converter with built-in battery charger
- Systems monitor panel

Skamper Optional Features

Skamper Pack Group:

- 13.5 BTU air conditioning with wall thermostat
- AM / FM/ CD player with four speakers
- A&E 8300 series awning
- TV antenna with cable prep
- Microwave
- Spare tire with cover

ABS slide tray (pass through storage)

Aluminum rims

Bi-fold shower door

DSI water heater (gas / electric)

Electric slide out motor

Enclosed underbelly

Fantastic vent

Four corner stabilizer jacks with sand pads

3 Heated waste holding tanks

Roof ladder

Safety glass

Spare tire with cover

Spray-away wash station

Stove cover

Water filter system

Skamper Standard Appliances and Electrical

- 19M or 30M BTU forced air DSI furnace with wall thermostat (see spec chart)
- 3 burner high output range with oven
- 30 amp power cord with storage compartment
- 6 gallon gas water heater with bypass
- Demand water pump
- 12 volt interior lights with wall switch and switch-on light
- Ducted heat

Skamper 8' Fifth Wheels



Standard slide-out overhead cabinets

Entertainment center with AM/FM stereo

Angled galleys feature additional overhead storage

Model 24BH-M5 is shown in Jagged Rose

Some features shown may be optional.

The New Lightweight Generation

Skamper, the original lightweight travel trailer company, is pleased to introduce the new Skamper lightweight fifth wheels for 2004.

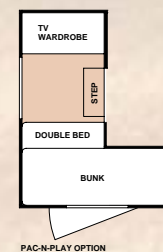
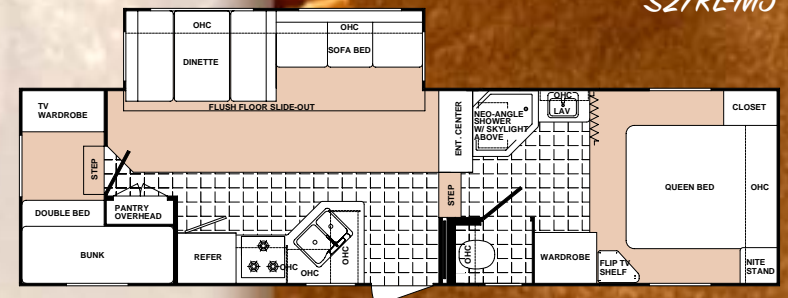
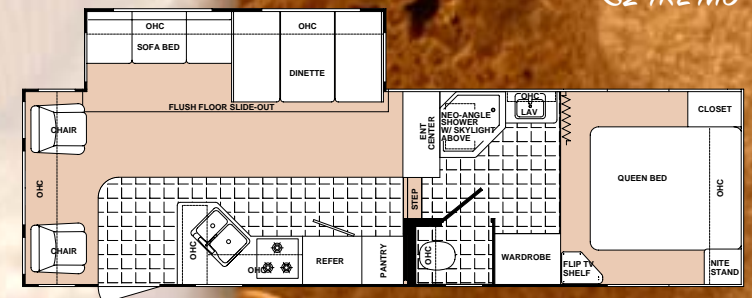
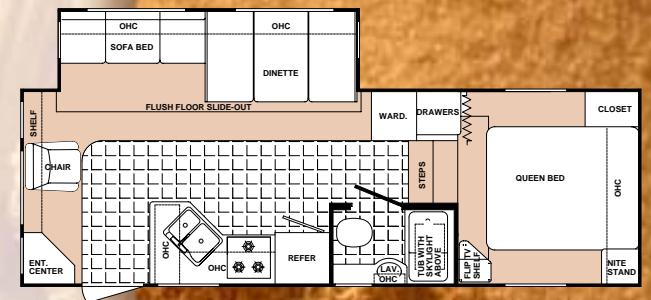
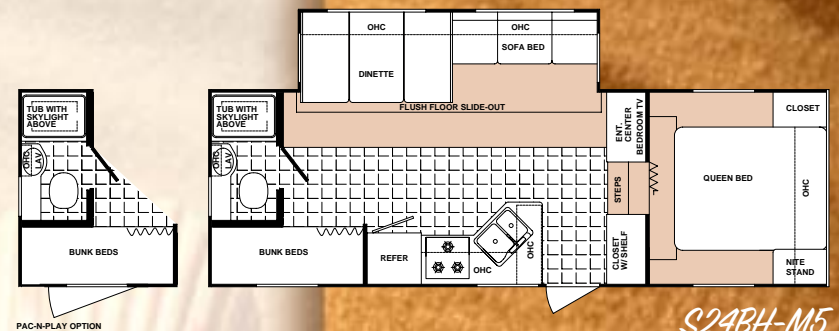
Built with a lightweight, all-aluminum superstructure, the Skamper fifth wheels offer all the same features and options you expect in a laminated, mid-profile fifth wheel without the extra weight. Two-tone fiberglass exterior, an aluminum truss roof and oversized holding tanks are just a few of the premium features found on the 2004 Skamper fifth wheels.

And the interiors are just as nice as the exteriors. Abundant storage, luxurious interior fabrics and furniture, and spacious baths and kitchens highlight some of the features on Skamper fifth wheels.

The 2004 fifth wheel from Skamper is lightweight, affordable and loaded with features and value.



Island queen bed with décor-coordinated bedspread



Weights & Measures

Standard run - includes popular options

	GVWR (lbs.)	Gross Dry Weight (lbs.)	Carrying Capacity (lbs.)	Dry Hitch Weight (lbs.)	Traveling Length	Width	Height	Fresh Water (gal.)	Gray Water (gal.)	Black Water (gal.)	Tire Size	Furnace Size (BTUs)
Kodiak Expandables												
K160	3,850	2,840	1,010	242	17' 3"	8'	9' 4"	30	34	22	ST205/75D14(C)	19,000
K195	4,840	3,490	1,350	326	20' 3"	8'	9' 4"	30	34	22	ST205/75D14(C)	19,000
K21TT	4,840	3,912	928	480	24' 4"	8'	9' 4"	30	34	22	ST205/75D14(C)	19,000
K214	4,840	3,816	1,024	370	24' 4"	8'	9' 4"	30	34	22	ST205/75D14(C)	19,000
K215	4,840	3,514	1,326	338	22' 4"	8'	9' 4"	30	34	22	ST205/75D14(C)	19,000
K235	4,840	3,870	970	356	24' 4"	8'	9' 4"	30	34	22	ST205/75D14(C)	19,000
K236	4,840	N/A	N/A	N/A	24' 4"	8'	9' 4"	30	34	22	ST205/75D14(C)	19,000
K23BH	4,840	4,030	810	480	26' 4"	8'	9' 4"	30	34	22	ST205/75D14(C)	19,000
K25QB	4,840	N/A	N/A	N/A	26' 4"	8'	9' 4"	30	34	22	ST205/75D14(C)	19,000
Skamper 8' Wide Travel Trailers												
S19FB	6,000	N/A	N/A	N/A	20' 3"	8'	9' 8"	30	34	22	ST205/75D14(C)	19,000
S23FB	6,000	3,656	2,344	292	24' 4"	8'	9' 8"	30	34	22	ST205/75D14(C)	19,000
S24RB-SL	6,000	4,070	1,930	452	26' 4"	8'	9' 8"	30	34	22	ST205/75D14(C)	19,000
S25BG	6,000	3,980	2,020	486	26' 4"	8'	9' 8"	30	34	22	ST205/75D14(C)	19,000
S25BH-SL	6,000	4,080	1,920	444	26' 4"	8'	9' 8"	30	34	22	ST205/75D14(C)	19,000
S25FQ	6,000	3,946	2,054	348	27' 1"	8'	9' 8"	30	34	22	ST205/75D14(C)	30,000
S26QS	6,000	4,422	1,578	416	27' 1"	8'	9' 8"	30	34	22	ST205/75D14(C)	30,000
S26RG-SL	6,000	4,356	1,644	428	28' 6"	8'	9' 8"	30	34	22	ST205/75D14(C)	19,000
S26RK	6,000	4,256	1,744	398	27' 1"	8'	9' 8"	30	34	22	ST205/75D14(C)	30,000
S27BH	6,000	4,312	1,688	412	30' 3"	8'	9' 8"	30	34	22	ST205/75D14(C)	30,000
S27RB-SL	6,000	4,518	1,484	624	30' 3"	8'	9' 8"	30	34	22	ST205/75D14(C)	30,000
S28RL-SL	6,000	N/A	N/A	N/A	30' 3"	8'	9' 8"	30	34	22	ST205/75D14(C)	30,000
S29RG	6,000	N/A	N/A	N/A	31' 11"	8'	9' 8"	30	34	22	ST205/75D14(C)	30,000
S30BH-SL	6,000	4,696	1,304	498	30' 3"	8'	9' 8"	30	34	22	ST205/75D14(C)	30,000
Skamper 8' Wide Fifth Wheels												
S24BH-M5	8,400	6,390	2,010	1,112	28' 7"	8'	12' 1"	46	34	34	ST205/75R15(C)	30,000
S24RL-M5	8,400	6,060	2,340	1,050	26' 10"	8'	12' 1"	46	34	34	ST205/75R15(C)	30,000
S27RL-M5	N/A	N/A	N/A	N/A	N/A	N/A	N/A	N/A	N/A	N/A	N/A	N/A
S28BH-M5	N/A	N/A	N/A	N/A	N/A	N/A	N/A	N/A	N/A	N/A	N/A	N/A

Vehicle Loading - Every effort has been made to provide the greatest number of options for the recreation vehicle owner. Along with these choices comes the responsibility to manage the loads that are imposed by the choices so that they remain within the manufacturer's specified chassis weight limits. Do not overload the recreation vehicle.

Dry weights based on standard run and includes some optional features. Net carrying capacity (NCC) determined by subtracting unloaded vehicle weight (UVW) from gross vehicle weight (GVWR) and includes fluids, options and cargo. Liquid capacities and weights are approximations only.

Warning: This information is intended as a guide only. Weights of individual vehicles may vary. Consult your owner's manual for complete loading, weighing and towing instructions.

Product information, specifications, and photography in this brochure were as accurate as possible at time of printing. Photographs may contain some features that are optional on your vehicle. Since we continually strive to improve our products, actual products may differ. Prices and specifications are subject to change without notice. All capacities are approximate and dimensions are nominal. Some features shown are optional and may be different or unavailable in Canada. Vehicles are designed for recreational use only and not intended for use as a primary residence.

2164 Caragana Court • Goshen, IN 46526
Sales 574.534.1224 • Fax 574.533.3807
Parts, Service & Information 574.537.0700
www.skamper-rv.com

©2003 Thor Industries, Inc.
Printed in U.S.A.
1103-SK-R1

*Not all
weight charts
are the same!*

The weight chart for Skamper includes popular standard run options that are found on the majority of the travel trailers and fifth wheels produced. Many competitors list the weights of trailers without options to make their units appear lighter.

Here are the weights of popular options. You can subtract these weights from the Gross Dry Weight if your trailer does not include the option:

Air Conditioner: 105 lbs AM/FM CD player: 5 lbs
Awning: 45 lbs Stabilizer Jacks: 25 lbs
Microwave: 32 lbs Spare Tire/Carrier: 45 lbs
TV Antenna: 7 lbs



THOR
AMERICA'S BEST RV VALUE

Why A Thor Product Is Your Best RV Value:

Thor Industries, Inc., listed on the New York Stock Exchange, proudly traces its history back over seventy years to the pioneering days of the RV industry with the founding of Airstream, the industry's oldest and most renowned brand. Our total commitment to quality and our philosophy of putting our customers first has led to our continuous growth. Today, Thor is the largest builder of RVs. Thor's strong financial condition and years of solid growth are your assurance that we will be here to serve you for years to come. We think this extra peace of mind is important when you are making a significant investment. Because our customers are always #1 with us, we work harder than other manufacturers to satisfy you.



This brochure is printed on recycled paper as part of Thor's corporate effort to minimize waste and conserve our natural resources. Providing safe, fuel-efficient recreational vehicles is Thor's way of further demonstrating our role as the industry leader in safeguarding our nation's environment.

Your Local Dealer