

2004 AEROLITE

Aerolite



LIGHTWEIGHT

**FIFTH WHEELS, TRAVEL TRAILERS
AND EXPANDABLES**

CUB EXPANDABLES

HIGH END
DESIGNER DÉCORS

RAISED PANEL
UPPER CABINET DOORS

6 CUBIC FT NORCOLD
REFRIGERATOR

3-BURNER RANGE
WITH OVEN

HIGH RISE FAUCET
& CUTTING BOARD

POT & PAN DRAWER
WITH STEEL DRAWER GLIDES

Some features shown may be optional.

EXPANDABLE COMFORT

For active families on the go, Cub expandable travel trailers add sleeping space without the additional length and weight that come with traditional travel trailers. And the lightweight design and aerodynamic profile make the Cub easy to tow.

From the ground up it's easy to see that Cub offers the most value for your dollar. The fully laminated all aluminum super structure rests on a European style ultra lightweight frame. Fiberglass exterior walls and rubber lined roof are designed for years of enjoyable use. The expandable beds feature CAVLAR 2000 tents that include a full 5-year warranty. The Cub rides on Al-Ko rubber torsion axles that give it an "Independent Suspension" style ride. You won't find all these features on the competition.

The interior of the 2004 Cub is our best looking ever.

The designer décors with luxurious fabrics, raised panel upper cabinet doors, and Congoleum vinyl flooring make the Cub your best choice when it comes to expandable travel trailers.

But the value doesn't stop there. The kitchen in the Cub is loaded with features including a Norcold refrigerator, a 3-burner LP range, a double bowl composite sink with a high-rise faucet, and abundant storage. So if you are looking for the best built, feature-packed lightweight expandable, look no further.

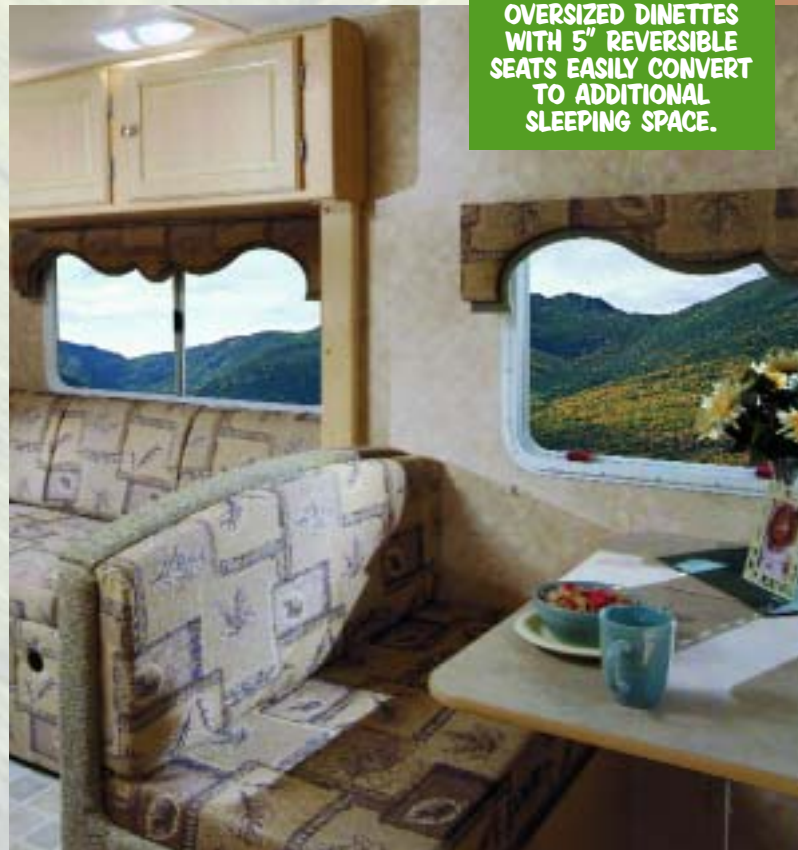
Choose Cub from Aerolite.
The original ultra-light travel trailer.

**MODEL C236
IS SHOWN IN
AMETHYST GREEN**

**60 X 80
QUEEN BEDS**



**OVERSIZED DINETTES
WITH 5" REVERSIBLE
SEATS EASILY CONVERT
TO ADDITIONAL
SLEEPING SPACE.**



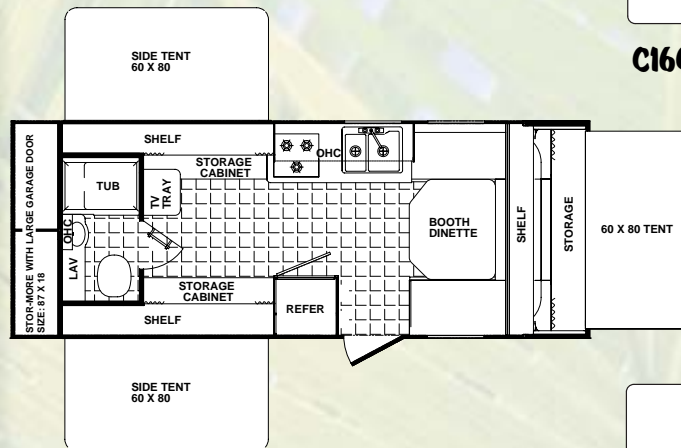
C236



CUB EXPANDABLES

CUB STANDARD EXTERIOR FEATURES

- 2-20 lb LP bottles with ABS cover
- 26" radius entry door
- ABS wheel wells
- Tandem axles with 4-wheel electric brakes (most models)
- Welded aluminum laminated superstructure (roof, floor and walls)
- Norco lightweight frame
- A1-Ko rubber torsion "independent suspension" axles
- ABS fender skirts
- Corrosion-free laminated darco underbelly
- EPDM one-piece seamless rubber roof
- Flush combo entry latch / deadbolt lock
- High-end designer graphics
- Rain gutter with corner down spouts
- Rear bumper and corner guards
- Sand pads on jacks
- Single entry step
- Tinted radius clamp ring windows
- Exterior step light with switch
- Entry assist handle at door
- Break-away trailer switch
- 120 volt exterior outlet
- Key-locking "Easy Latch" tent doors
- Trash bag holder
- TV Shelf
- 60 x 80 queen beds in tents
- Roll-over sofa bed



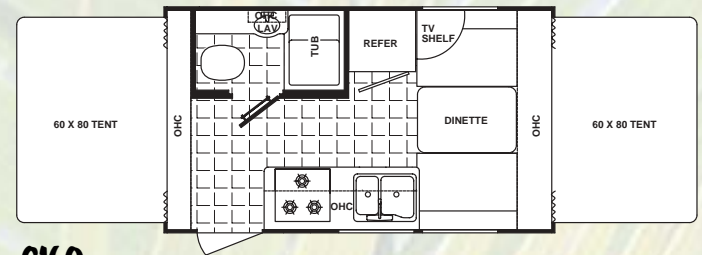
C21TT



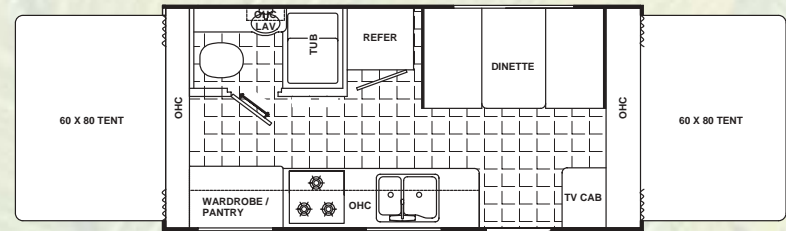
**CUB'S KEY
LOCKING
'EASY LATCH'
TENT DOOR**

CUB STANDARD INTERIOR FEATURES

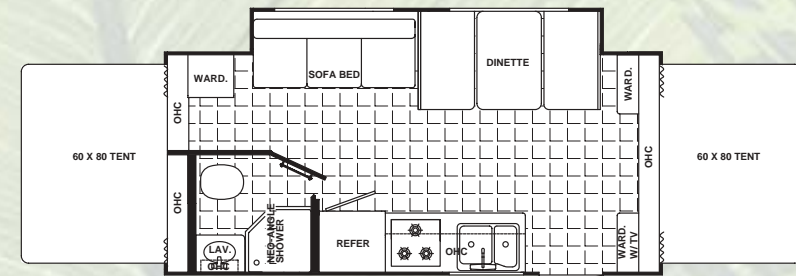
- 5" thick, reversible dinette seats
- Bathroom medicine cabinet (not all models)
- Designer window treatments
- Double bowl, white composite sink with high-rise faucet and dual sink covers
- Fiberlink bathtub
- Shower curtain
- Glass décor light over dinette table
- Mini blinds throughout
- Power roof vent in bathroom
- Residential tile-like linoleum



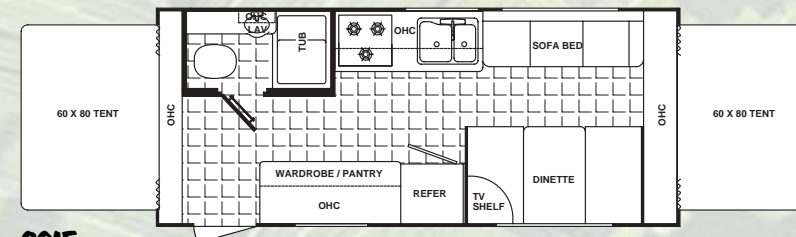
C160



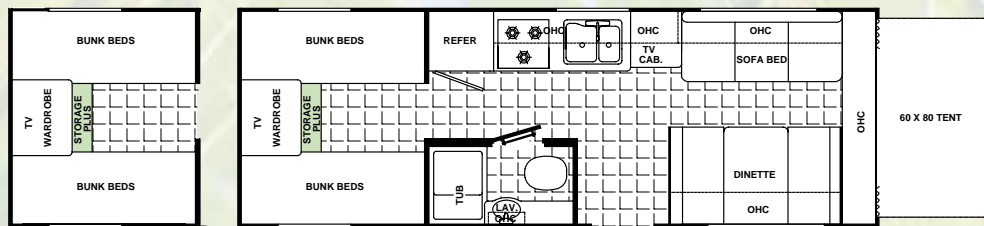
C195



C214

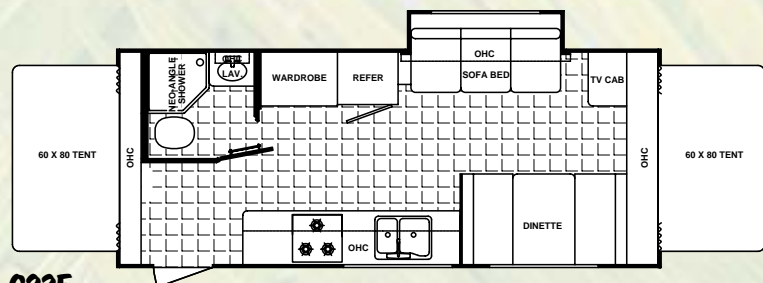


C215



PAC-N-PLAY OPTION

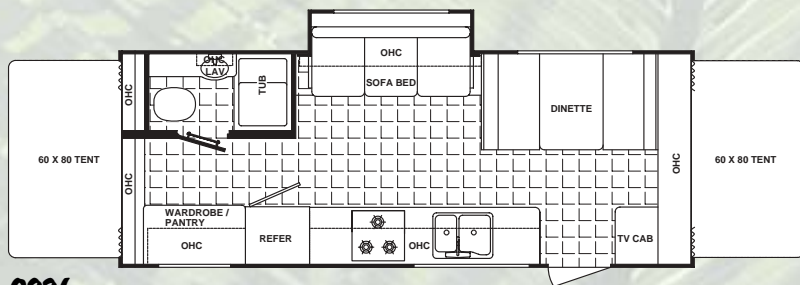
C25QB



C235



C23BH



C236

DÉCOR SELECTIONS FOR CUB AND AEROLITE



ALFRED BLUE



AMETHYST GREEN



MONT BROOK ROSE

CUB STANDARD APPLIANCES AND ELECTRICAL

- 19M BTU forced air DSI furnace with wall thermostat
- Ducted heat
- 3 burner high-output range
- 30 amp power cord with storage compartment
- 6 gallon gas water heater with bypass
- Demand water pump
- 12 volt interior lights with wall switch and switch on light
- Fire extinguisher
- LPG leak detector
- Norcold single door gas / electric refrigerator
- Patio light
- Pre-wired for air conditioning
- Pre-wired for cable TV
- Pre-wired for stereo
- Range hood with 12 volt light & exhaust fan
- Smoke detector
- Solid state converter with built-in battery charger
- Systems monitor panel

CUB OPTIONAL FEATURES

- Cub Pack Group:
 - 13.5 air conditioning with wall thermostat
 - AM / FM / CD player with four speakers
 - A&E 8300 series awning
 - TV antenna with cable prep
 - Microwave
 - Spare tire with cover
 - Bunk end lights
- 6 cubic feet double door refrigerator
- DSI water heater (gas / electric)
- Electric slide out motor
- Heated waste holding tanks (3)
- Oven with range
- Safety glass
- Spray-away wash station
- Stove cover
- Tub surround
- Water filter system

AEROLITE 8' TRAVEL TRAILERS



RAISED PANEL
UPPER CABINET DOORS

AM/FM/CD
STEREO SYSTEM

HEADBOARD AND
BEDSPREAD STANDARD

PREWIRED FOR
CABLE TV

5" THICK REVERSIBLE
DINETTE SEATS

BRUSHED NICKEL
HARDWARE

CONGOLEUM RESIDENTIAL
VINYL FLOORING

MODEL 30BH-SL SHOWN IN MONT BROOK ROSE

Some features shown may be optional.

THE ORIGINAL LIGHTWEIGHT TRAVEL TRAILER

With floorplans ranging from 19 to 30 feet, Aerolite is sure to have the travel trailer that's right for your family. Filled with features and value, the 2004 Aerolite is the standard by which all other lightweight travel trailers are judged.

Our Norco ultra lightweight chassis, Al-Ko rubber torsion axles with easy lube hubs, and fully laminated aluminum superstructure (floor, walls and roof) make the Aerolite lightweight and easy to tow. Designer interiors with residential window treatments, luxurious fabrics and upgraded furniture

are just some of the features that make the Aerolite stand out.

Just because it is a lightweight travel trailer doesn't mean that it has to be light on storage. The Aerolite is designed to let you take everything you need on the road with you. Aerolite includes generous amounts of counter and cabinet space, pass through "Storage Plus" compartments, and 40" wide dinette seats. Plus, some models include the optional "Pac-N-Play" side storage compartment or the "Stor-More" rear storage garage for all of your camping gear.

Just compare the design, features, and equipment on the 2004 Aerolite to the competition and you will find that the Aerolite is your best choice when it comes to lightweight travel trailers.



THE A26QS HAS A UNIQUE SELF-SUPPORTING SLIDE-OUT QUEEN BED WITH ELECTRIC MOTOR.



AEROLITE KITCHENS FEATURE A 3-BURNER RANGE WITH LARGE OVEN AND RESIDENTIAL MICROWAVE.



CHOOSE THE PAC-N-PLAY OPTION AVAILABLE ON FLOORPLANS WITH BUNKS TO MAXIMIZE YOUR EXTERIOR STORAGE. IT'S LARGE ENOUGH TO STORE BIKES, LAWN CHAIRS AND COOLERS.

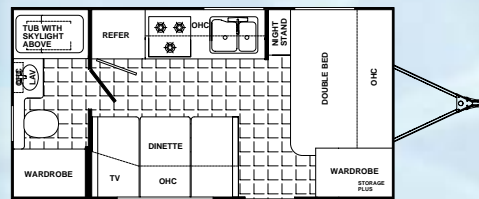
Aerolite

AEROLITE STANDARD EXTERIOR FEATURES

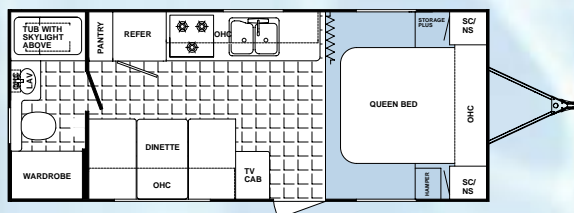
- Two 30 lb LP bottles with ABS cover
- 26" radius entry door
- ABS wheel wells
- Tandem axles with 4-wheel electric brakes
- Welded aluminum laminated superstructure (roof, floor and walls)
- Al-Ko rubber torsion "independent suspension" easy lube axles
- ABS fender skirts
- Corrosion free laminated darco underbelly
- EPDM one-piece seamless rubber roof
- Flush combo entry latch / deadbolt lock
- High-end designer graphics
- Norco lightweight frame
- Ozite carpet in pass through storage areas
- Rain gutter with corner down spouts
- Rear bumper and corner guards
- Roof ducted for air conditioning
- Single entry step
- Tinted radius clamp ring windows
- Window in bathroom (most models)
- Step light with switch
- Entry assist handle at door
- Break-away trailer switch
- 120 volt exterior outlet

AEROLITE STANDARD INTERIOR FEATURES

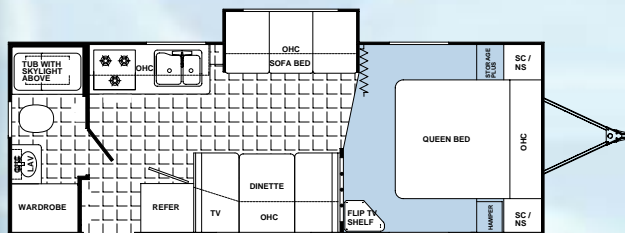
- 5" thick, reversible dinette seats
- Bathroom medicine cabinet (most models)
- Bedroom carpet
- Clothes hamper/laundry basket with access to Storage Plus
- Color-coordinated bedspread
- Designer window treatments
- Double bowl, white acrylic sink with high-rise faucet and dual sink covers
- Fiberlink bathtub
- Shower curtain
- Glass décor light over dinette table



A19FB



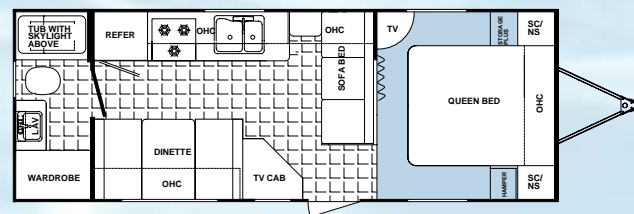
A23FB



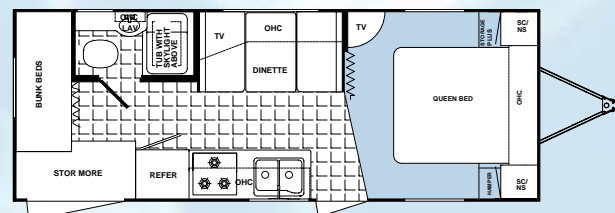
A24RB-SL

- Mini blinds throughout
- Pin-up lights in bedroom (some models)
- Power roof vent in bathroom
- Residential tile like linoleum
- Skylight in bathroom
- Trash bag holder
- Tub surround
- TV Shelf

See décor selections on Cub floorplan page.

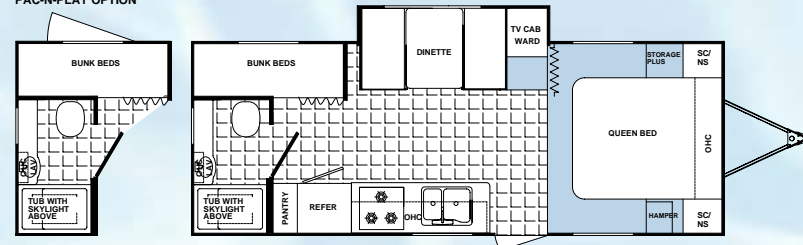


A25FQ

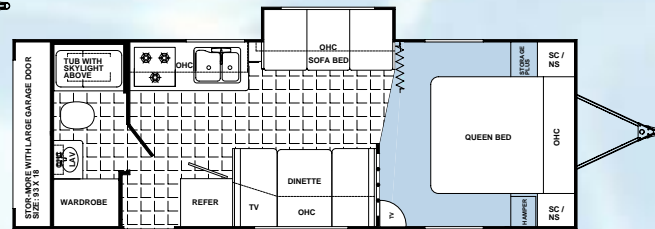


A25BG

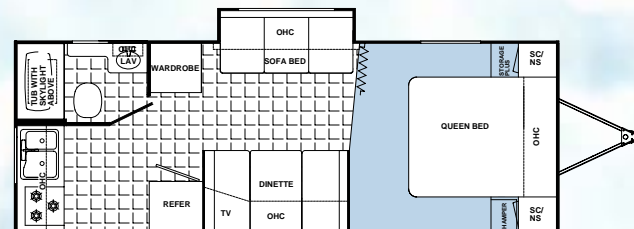
PAC-N-PLAY OPTION



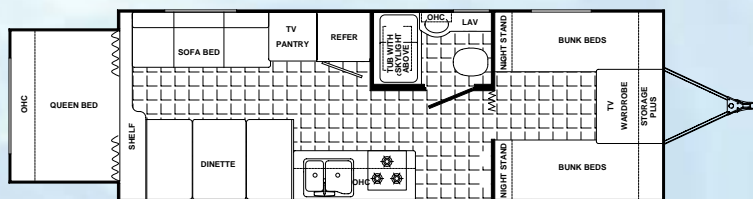
A25BH-SL



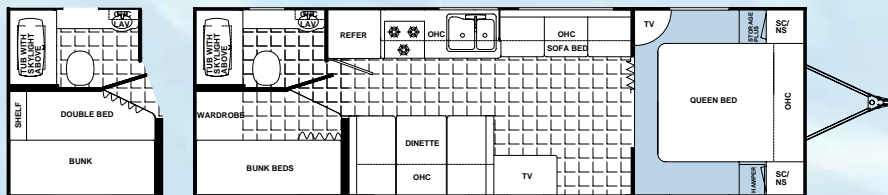
A26RG-SL



A26RK-SL

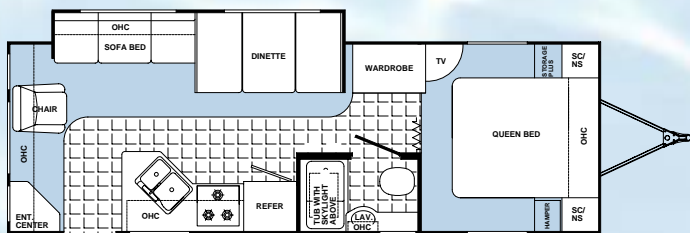


A26QS

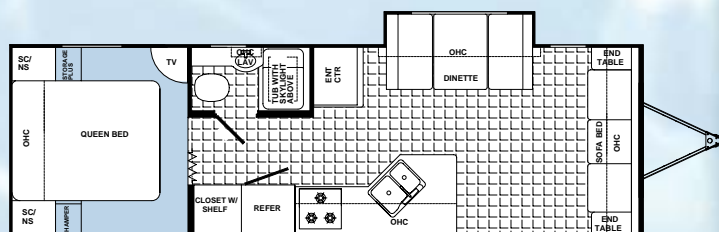


A27BH

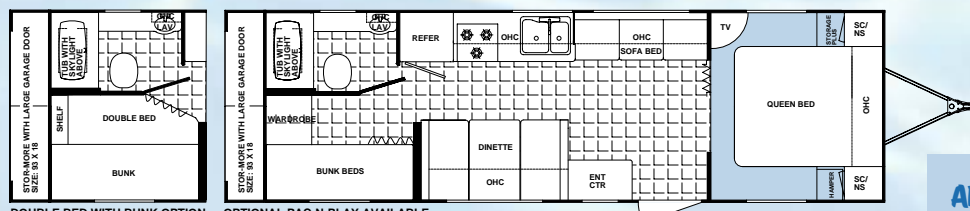
OPTIONAL PAC-N-PLAY AVAILABLE



A28RL-SL



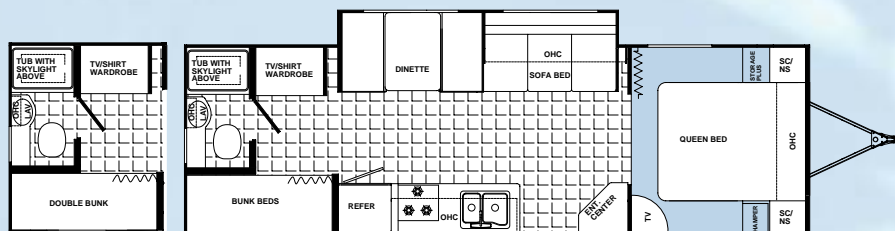
A27RB-SL



DOUBLE BED WITH BUNK OPTION

OPTIONAL PAC-N-PLAY AVAILABLE

A29RG



PAC-N-PLAY OPTION

A30BH-SL

AEROLITE STANDARD APPLIANCES AND ELECTRICAL

19M or 30M BTU forced air DSI furnace with wall thermostat (see spec chart)
3 burner high output range with oven
30 amp power cord with storage compartment
6 gallon gas water heater with bypass
Demand water pump
12 volt interior lights with wall switch and switch-on light
Ducted heat

Fire extinguisher
LPG leak detector
Norcold double door gas/electric refrigerator
Patio light
Pre-wired for air conditioning
Pre-wired for cable TV and stereo
Range hood with 12 volt light, exhaust fan
Smoke detector
Solid state converter with built-in battery charger
Systems monitor panel

AEROLITE OPTIONAL FEATURES

Aerolite Pack Group:
13.5 BTU air conditioning with wall thermostat
AM / FM/ CD player with four speakers
A&E 8300 series awning
TV antenna with cable prep
Microwave
Spare tire with cover
ABS slide tray (pass through storage)
Aluminum rims
Bi-fold shower door
DSI water heater (gas / electric)
Electric slide out motor
Enclosed underbelly
Fantastic vent
Four corner stabilizer jacks with sand pads
3 Heated waste holding tanks
Roof ladder
Safety glass
Spare tire with cover
Spray-away wash station
Stove cover
Water filter system

AEROLITE FIFTH WHEELS



LARGE PANORAMIC
WINDOWS

SWIVEL
ROCKERS

STANDARD SLIDE-OUT
OVERHEAD CABINETS

HIDE-A-BED
SOFA

MODEL 27RL-SL SHOWN IN MONT BROOK ROSE

Some features shown may be optional.

THE NEW LIGHTWEIGHT GENERATION

Aerolite, the original lightweight travel trailer company, is pleased to introduce the new Aerolite lightweight fifth wheels for 2004.

Built with a lightweight, all-aluminum superstructure, the Aerolite fifth wheels offer all the same features and options you expect in a laminated, mid-profile fifth wheel without the extra weight. Two-tone fiberglass exterior, an aluminum truss roof and oversized holding tanks are just a few of the premium features found on the 2004 Aerolite fifth wheels.



And the interiors are just as nice as the exteriors. Abundant storage, luxurious interior fabrics and furniture, and spacious baths and kitchens highlight some of the features on Aerolite fifth wheels.

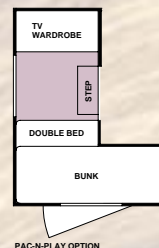
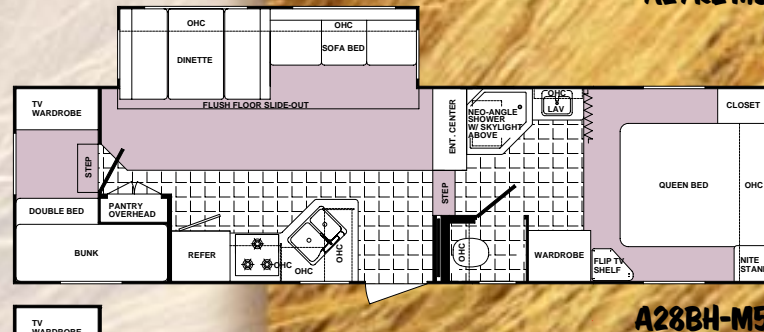
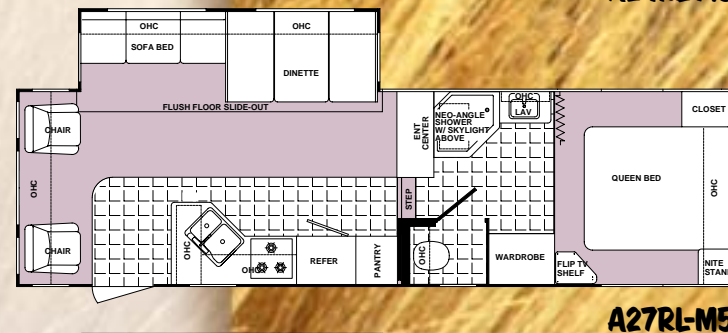
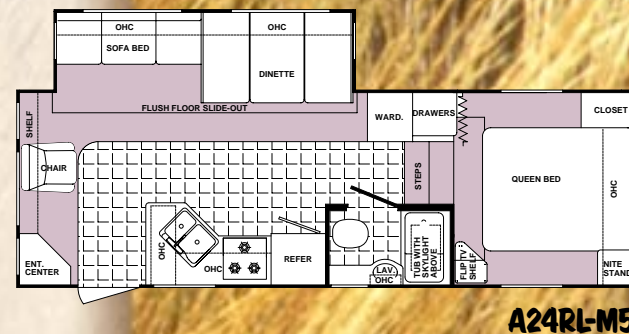
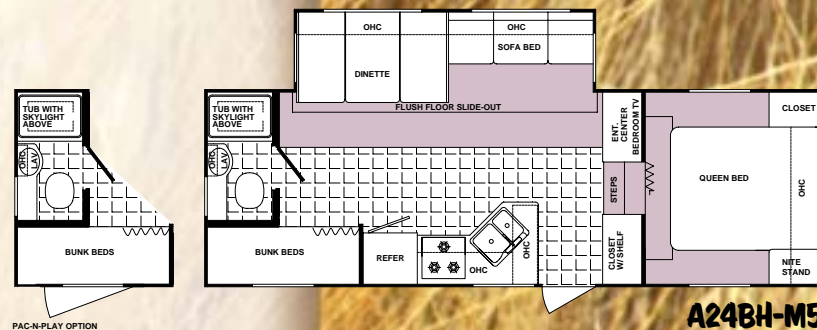
The 2004 fifth wheel from Aerolite is lightweight, affordable and loaded with features and value.

**QUEEN-SIZE WALK-AROUND BED
FEATURES AMPLE STORAGE AND
READING LIGHTS.**

**AEROLITE FIFTH
WHEELS ARE AVAILABLE
WITH NEO-ANGLE
SHOWERS WITH GLASS
SHOWER DOORS
(SEE FLOORPLANS)**



**ISLAND QUEEN BED WITH
DECOR-COORDINATED
BEDSPREAD**



Aerolite

WEIGHTS & MEASURES

STANDARD RUN - INCLUDES POPULAR OPTIONS

	GVWR (lbs.)	Gross Dry Weight (lbs.)	Carrying Capacity (lbs.)	Dry Hitch Weight (lbs.)	Traveling Length	Width	Height	Fresh Water (gal.)	Gray Water (gal.)	Black Water (gal.)	Tire Size	Furnace Size (BTUs)
CUB EXPANDABLES												
160	3,850	2,776	1,074	242	16' 10"	7' 6"	9' 4"	30	34	22	ST205/75D14(C)	19,000
195	4,840	3,342	1,498	238	19' 10"	7' 6"	9' 4"	30	34	22	ST205/75D14(C)	19,000
21TT	4,840	3,860	980	456	23' 11"	7' 6"	9' 4"	30	34	22	ST205/75D14(C)	19,000
214	4,840	3,718	1,122	308	23' 11"	7' 6"	9' 4"	30	34	22	ST205/75D14(C)	19,000
215	4,840	3,402	1,438	360	21' 11"	7' 6"	9' 4"	30	34	22	ST205/75D14(C)	19,000
235	4,840	N/A	N/A	N/A	23' 11"	7' 6"	9' 4"	30	34	22	ST205/75D14(C)	19,000
236	4,840	3,822	1,018	364	23' 11"	7' 6"	9' 4"	30	34	22	ST205/75D14(C)	19,000
23BH	4,840	4,016	824	476	25' 11"	7' 6"	9' 4"	30	34	22	ST205/75D14(C)	19,000
25QB	4,840	N/A	N/A	N/A	25' 11"	7' 6"	9' 4"	30	34	22	ST205/75D14(C)	19,000

AEROLITE 8' WIDE TRAVEL TRAILERS

19FB	6,000	N/A	N/A	N/A	20' 3"	8'	9' 8"	30	34	22	ST205/75D14(C)	19,000
23FB	6,000	3,656	2,344	292	24' 4"	8'	9' 8"	30	34	22	ST205/75D14(C)	19,000
24RB-SL	6,000	4,070	1,930	452	26' 4"	8'	9' 8"	30	34	22	ST205/75D14(C)	19,000
25BG	6,000	3,980	2,020	486	26' 4"	8'	9' 8"	30	34	22	ST205/75D14(C)	19,000
25BH-SL	6,000	4,080	1,920	444	26' 4"	8'	9' 8"	30	34	22	ST205/75D14(C)	19,000
25FQ	6,000	3,946	2,054	348	27' 1"	8'	9' 8"	30	34	22	ST205/75D14(C)	30,000
26QS	6,000	4,422	1,578	416	27' 1"	8'	9' 8"	30	34	22	ST205/75D14(C)	30,000
26RG-SL	6,000	4,356	1,644	428	28' 6"	8'	9' 8"	30	34	22	ST205/75D14(C)	19,000
26RK	6,000	4,256	1,744	398	27' 1"	8'	9' 8"	30	34	22	ST205/75D14(C)	30,000
27BH	6,000	4,312	1,688	412	30' 3"	8'	9' 8"	30	34	22	ST205/75D14(C)	30,000
27RB-SL	6,000	4,518	1,484	624	30' 3"	8'	9' 8"	30	34	22	ST205/75D14(C)	30,000
28RL-SL	6,000	N/A	N/A	N/A	30' 3"	8'	9' 8"	30	34	22	ST205/75D14(C)	30,000
29RG	6,000	N/A	N/A	N/A	31' 11"	8'	9' 8"	30	34	22	ST205/75D14(C)	30,000
30BH-SL	6,000	4,696	1,304	498	30' 3"	8'	9' 8"	30	34	22	ST205/75D14(C)	30,000

AEROLITE 8' WIDE FIFTH WHEELS

24BH-M5	8,400	6,390	2,010	1,112	28' 7"	8'	12' 1"	46	34	34	ST205/75R15(C)	30,000
24RL-M5	8,400	6,060	2,340	1,050	26' 10"	8'	12' 1"	46	34	34	ST205/75R15(C)	30,000
27RL-M5	N/A	N/A	N/A	N/A	N/A	N/A	N/A	N/A	N/A	N/A	N/A	N/A
28BH-M5	N/A	N/A	N/A	N/A	N/A	N/A	N/A	N/A	N/A	N/A	N/A	N/A

Vehicle Loading - Every effort has been made to provide the greatest number of options for the recreation vehicle owner. Along with these choices comes the responsibility to manage the loads that are imposed by the choices so that they remain within the manufacturer's specified chassis weight limits. Do not overload the recreation vehicle.

Dry weights based on standard run and includes some optional features. Net carrying capacity (NCC) determined by subtracting unloaded vehicle weight (UVW) from gross vehicle weight (GVWR) and includes fluids, options and cargo. Liquid capacities and weights are approximations only.

Warning: This information is intended as a guide only. Weights of individual vehicles may vary. Consult your owner's manual for complete loading, weighing and towing instructions.

Product information, specifications, and photography in this brochure were as accurate as possible at time of printing. Photographs may contain some features that are optional on your vehicle. Since we continually strive to improve our products, actual products may differ. Prices and specifications are subject to change without notice. **All capacities are approximate and dimensions are nominal. Some features shown are optional and may be different or unavailable in Canada.** Vehicles are designed for recreational use only and not intended for use as a primary residence.

305 Steury Avenue • Goshen, IN 46528
Sales 574.534.1224 • Fax 574.533.3807
Parts, Service & Information 574.537.0700
www.aero-rv.com

©2003 Thor Industries, Inc.
Printed in U.S.A.
1103-AE-R1

NOT ALL WEIGHT CHARTS ARE THE SAME!

The weight chart for Aerolite includes popular standard run options that are found on the majority of the travel trailers and fifth wheels produced. Many competitors list the weights of trailers without options to make their units appear lighter.

Here are the weights of popular options. You can subtract these weights from the Gross Dry Weight if your trailer does not include the option:

Air Conditioner: 105 lbs	AM/FM CD player: 5 lbs
Awning: 45 lbs	Stabilizer Jacks: 25 lbs
Microwave: 32 lbs	Spare Tire/Carrier: 45 lbs
TV Antenna: 7 lbs	



THOR
AMERICA'S BEST RV VALUE

Why A Thor Product Is Your Best RV Value:

Thor Industries, Inc., listed on the New York Stock Exchange, proudly traces its history back over seventy years to the pioneering days of the RV industry with the founding of Airstream, the industry's oldest and most renowned brand. Our total commitment to quality and our philosophy of putting our customers first has led to our continuous growth. Today, Thor is the largest builder of RVs. Thor's strong financial condition and years of solid growth are your assurance that we will be here to serve you for years to come. We think this extra peace of mind is important when you are making a significant investment. Because our customers are always #1 with us, we work harder than other manufacturers to satisfy you.



This brochure is printed on recycled paper as part of Thor's corporate effort to minimize waste and conserve our natural resources. Providing safe, fuel-efficient recreational vehicles is Thor's way of further demonstrating our role as the industry leader in safeguarding our nation's environment.

Your Local Dealer