

DAYBREAK 2003



D A M O N D A R E S Y O U .



If you can find another



Go ahead. Check out our competitors. DayBreak™ is the better value. We're sure of it. To begin with, it's priced no more than a typical mini motorhome. But there's nothing else mini about DayBreak. This is a full-size, wide-body motorhome with all the power, performance and luxury you need to put more get-up-and-go in your getaways. The competition can't touch it: We dare you to find a single one of them that has all these extraordinary DayBreak features:

motorhome with features like this at DayBreak's price ...

For extra strength, rigidity and durability, DayBreak has **five-layer vacuum-bond laminated sidewalls** with full aluminum framing, including windows, doors and all wall cutouts.

DayBreak storage is an RVer's dream. Every floor plan includes a **pass-through rear storage** compartment that not only makes for easy loading and unloading, but also allows you to stow items of up to seven or eight feet long! The basement storage doors are one-inch thick and fully insulated, too. And all storage doors feature a smooth-operating, sure-closing rotary slam latch.

Year-round travel in virtually any climate is possible, thanks to DayBreak's **heated holding tanks**. They're thermostatically adjusted by the furnace control inside the motorhome.

The available **driver's side door features a slider window and lock** and provides easier cab access, greater comfort and security.

Oversized, dual-lens, rear-view exterior mirrors with optional power control give you a wide look at what's behind you.

DayBreak's **low-profile engine cover** creates a smaller hump in the cab floor, enabling you to enter and exit the captain's chairs much more easily.

Hand-crafted solid-wood cabinet doors with attractive cathedral-cut fascia lend an extra measure of elegance to the interior décor. All doors have strong mortise and tenon joints and a radiant finish that will stand the test of time.

Every single coach is weighed before it leaves the factory. We don't use an average like some manufacturers, so you'll know the exact amount of cargo your DayBreak can carry.

Bedroom wardrobe



Solid-wood cabinet doors



Pass-through storage



Pullout pantry drawers





Compare the features, th



Four-point hydraulic leveling jacks are standard on every slideout-model DayBreak. They help significantly stabilize the coach, keeping it level and eliminating side-to-side motion as people walk through the interior.

A law of physics says that heat rises and cold falls, yet some manufacturers persist in putting an air conditioner in the basement of their motorhomes. Go figure! At Damon, we trust science and outfit every DayBreak with molded, fully insulated **air-conditioning ducts through the roof** for maximum cooling. (N/A in 2750 LE).

The DayBreak kitchen features especially convenient **pullout pantry drawers** that offers much more usable space than the typical spice rack some motorhomes provide.



en compare the price. Damon wins every time. Period.

Have a laptop or notebook computer you like to take with you on your travels? DayBreak gives you **computer connections** (AC/DC outlets and a modem phone jack) under the dash on the passenger's side. Now it's easier than ever to get e-mail and surf the Internet on the road or at the campsite!

DayBreak's **electric slideout system** operates far more smoothly and dependably than most hydraulic systems. For one thing, it isn't apt to leak at high or low altitudes. And it isn't subject to the corrosion of hydraulic systems. Result? Very little maintenance is required for a lifetime of efficient use.

For a Damon Dare checklist for easy comparison shopping, visit our web site at www.DamonRV.com. We're confident that these features put DayBreak in a class of its own. So go ahead, shop around. Once you see everything that goes into a DayBreak, we're confident you wouldn't dare settle for anything less.

Passenger's side outlets



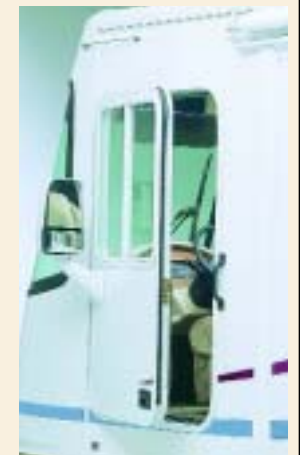
Pullout garbage pail



Burl instrument panel



Driver's door and rear-view mirror



The Sidewalls

Sidewalls are five layers thick:

- Exterior fiberglass
- Lauan
- Aluminum frame
- Bead-foam insulation
- Interior wallboard

The walls are also vacuum-bond laminated for added strength and rigidity. The lamination process eliminates "soft walls," because it integrates all layers, turning them into one solid structure.

All wall openings — for doors, windows and other components — are framed in aluminum tubing with welded joints. This further strengthens the coach body.

The Utilities

It's no problem to travel in all four seasons, because of DayBreak's heated holding tanks and fully contained plumbing systems. We've mounted the tanks horizontally, making service and maintenance easy — you don't have to cut any steel to access the tanks.

The Basement and Storage

The DayBreak basement employs a strong, welded-steel truss system. The trusses are horizontal to better distribute weight. They also provide a central location for attaching the living area and storage compartments. And they allow for DayBreak's huge pass-through storage area.

The Floor

A water-resistant, structurewood floor supports the living area in the motorhome. Framed in 1.5-inch welded-steel tubing, it is insulated with solid bead-foam insulation and protected with a galvanized underbelly, which will not rust or corrode.

The Roof

DayBreak's roof is also vacuum-bond laminated for superior strength and rigidity. It features an aluminum rafter support system with bowed rafters to maintain the roof's crowned shape. A crowned roof permits better water runoff, which helps prevent leaks. It also increases the insulation factor, especially around air-conditioner channels.



Dare to go anywhere: DayBreak's built to take it.

What makes the difference? Advanced engineering. Computer-aided design. Innovative manufacturing techniques. And paying attention to feedback from RVers just like you.

At Damon, we also maintain consistent standards. Many other manufacturers cut corners when they build entry-priced motorhomes. Not us. Every motorhome we make, whatever the price, gets built the same way — the right way — with the same high-quality materials, components and construction techniques.

Electric slideout system



Low-profile engine cover



Four-point leveling jacks



The Chassis

Quality construction starts with the chassis. And DayBreak uses only the finest: either a Ford® or Workhorse® chassis, depending on the floor plan.

Light Sante Fe



Medium Stellar Blue



Chestnut Falls



Maple Creek



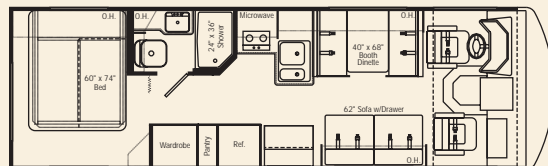
Oakgrove



Oak



2750 LE



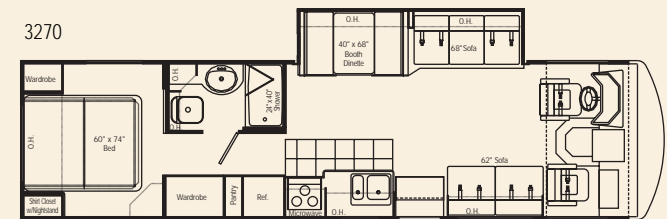
Our most affordable floor plan • Pantry • Seatbelts for six

2960



Seatbelts for eight • Walk through bath • Pantry

3270



Living-area slideout • Two sofas in living area • Seatbelts for six



Optional Barrel Chair & Table
Replaces Standard Sofa

Deluxe graphics package (standard)



Paint

DayBreak's exterior has a remarkably fluid, energized look, thanks in large part to its clean, bold graphics and optional paint stylings.

Daring choices ... to fit your life.

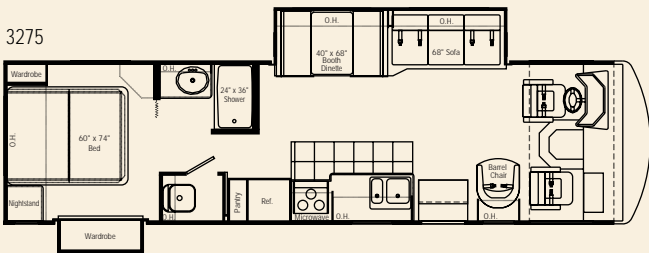
Maple



Décor

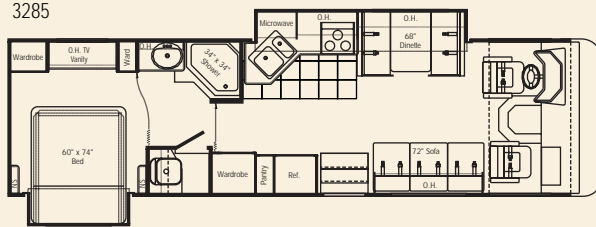
Damon's interior designers and engineers have created a choice of exciting environments that not only help you feel right at home, but also lend a sense of personality to your DayBreak.

3275



Living-area slideout • Large slideout closet • Walk through bath

3285



Functional slideout kitchen • Bedroom slideout • Seatbelts for seven

Floor Plans

Whichever DayBreak floor plan you choose, you can be sure it's thoughtfully laid out to provide the roomiest, most comfortable, most convenient mobile living experience you've ever had.

Bathroom	2750 LE	2960	3270	3275	3285
Shower with vinyl board surround	S	N/A	N/A	N/A	N/A
Shower with ABS surround	N/A	S	S	S	S
Shower curtain	S	S	S	S	S
Shower door	O	O	O	O	O
Skylight in tub/shower	S	S	S	S	S
Power vent	S	S	S	S	S
Hand-flush toilet	S	S	S	S	S
Foot-flush toilet	N/A	O	O	O	O
Medicine cabinet	S	S	S	S	S
Wall-mounted mirror	S	N/A	N/A	N/A	N/A
Hardwood-framed mirror	N/A	S	S	S	S
Self-edged countertops throughout	S	S	S	S	S
Bedroom	2750 LE	2960	3270	3275	3285
High-density foam mattress with fabric cover	S	N/A	N/A	N/A	N/A
Innerspring mattress	N/A	S	S	S	S
Upgraded innerspring mattress	O	O	O	O	O
Bedsprad and headboard	S	S	S	S	S
TV area and jack	S	S	S	S	S
13" color TV	N/A	O	O	O	O
Roller shades with drapes	S	S	S	S	S
Mini blinds	O	O	O	O	O
Chassis	2750 LE	2960	3270	3275	3285
Leveling jacks	N/A	O	S	S	S
Spare tire, wheel and bracket	O	O	O	O	O
Stainless-steel wheel covers	S	S	S	S	S
Stainless-steel wheel liners	O	O	O	O	O
Front and rear mud flaps	S	S	S	S	S
Radial tires	S	S	S	S	S
Trailer hitch (3,500 lbs.)	O	S	S	S	S
Under-hood light	S	S	S	S	S
Emergency start circuit	S	S	S	S	S
Automatic transmission with overdrive	S	S	S	S	S
Cockpit	2750 LE	2960	3270	3275	3285
Burl instrument panel	S	S	S	S	S
Molded ABS dash	S	S	S	S	S
Pioneer® AM/FM/cassette stereo	S	S	S	S	S
AM/FM/cassette/CD	N/A	O	O	O	O
Cruise control	S	S	S	S	S
Power steering	S	S	S	S	S
Tilt steering wheel	S	S	S	S	S
Full instrumentation	S	S	S	S	S
Map lights	S	S	S	S	S
Dash fans	S	S	S	S	S
Driver's door with slider window	O	O	O	O	O
Tinted wraparound windshield	S	S	S	S	S
Windshield privacy drape	S	S	S	S	S
Side-mounted mirrors	S	N/A	N/A	N/A	N/A
Upgraded side-mounted mirrors	N/A	S	S	S	S

S = Standard O = Optional N/A = Not available IPO = In place of

Cockpit (con't.)	2750 LE	2960	3270	3275	3285
Side-mounted power mirrors	O	O	O	O	O
Floor mats	O	O	O	O	O
Captain's chairs	S	N/A	N/A	N/A	N/A
Reclining swivel captain's chairs	N/A	S	S	S	S
3-point, wall-mounted seat belts	S	S	S	S	S
Sun visors	S	S	S	S	S
Electronically controlled dash air conditioning	S	S	S	S	S
Backup monitor system with audio	O	O	O	O	O
Drink holders	S	S	S	S	S
Entry	2750 LE	2960	3270	3275	3285
Electric entrance step	O	O	O	O	O
Integrated entrance step	S	S	S	S	S
Entry-assist grab handle	S	S	S	S	S
Deadbolt door lock	S	S	S	S	S
Battery access in stairwell	S	S	S	S	S
Exterior	2750 LE	2960	3270	3275	3285
Paint package	N/A	O	O	O	O
Wide-body design	S	S	S	S	S
Rear ladder	O	S	S	S	S
Roof vents	S	S	S	S	S
Aerodynamic front fiberglass cap	S	S	S	S	S
Contoured front integrated bumper	S	S	S	S	S
Automotive-style rear bumper	S	S	S	S	S
Awning rail	S	S	S	S	S
Side-mounted patio awning (<i>awnings not available on widebody models in some locations. Check local regulations for applicable laws.</i>)	O	S	S	S	S
Side-mounted awning over slideout	N/A	N/A	S	S	S
Entry-assist handrail	S	S	S	S	S
White smooth fiberglass exterior with deluxe graphics	S	S	S	S	S
Radius-cornered domed roof	S	S	S	S	S
Locking exterior storage doors	S	S	S	S	S
White-trimmed, radius-topped entrance door	S	S	S	S	S
White-framed, radius-cornered windows	S	S	S	S	S
Dual-pane windows	N/A	O	O	O	O
Porch light	S	S	S	S	S
Lined and lighted storage compartments	S	S	S	S	S
Pass-through storage compartment	S	S	S	S	S
RVQ grill	N/A	O	O	O	O
Kitchen	2750 LE	2960	3270	3275	3285
Refrigerator: flush-mounted, double-door	S	S	S	S	S
Refrigerator: large flush-mounted, double-door	N/A	O	O	O	O
Refrigerator: solid-wood front (oak or maple)	N/A	O	O	O	O
2-burner range	S	N/A	N/A	N/A	N/A
3-burner range and oven	O	S	S	S	S
Range cover	O	S	S	S	S
Microwave oven	S	S	S	S	S
Lighted power range hood	S	S	S	S	S

Kitchen (con't.)	2750 LE	2960	3270	3275	3285
Monitor panel with LPG readout	S	S	S	S	S
Double-bowl sink with oversized dish bowl	S	S	S	S	S
Sink cover	O	S	S	S	S
Self-edged countertops throughout	S	S	S	S	S
Solid-wood, flat-panel cabinet doors throughout	S	N/A	N/A	N/A	N/A
Solid-wood cabinet doors throughout (flat-panel lower, raised-panel upper): (oak or maple)	N/A	S	S	S	S
12" x 12" vinyl tile flooring	N/A	S	S	S	S
Wood-plank flooring (oak or maple)	N/A	O	O	O	O
Booth dinette with padded top	S	S	S	S	S
Mini blinds	S	S	S	S	S
Wallpaper border	S	S	S	S	S
Fire extinguisher	S	S	S	S	S

Living Area	2750 LE	2960	3270	3275	3285
One barrel chair and table IPO sofa	N/A	N/A	O	N/A	N/A
Sofa bed	S	S	S	S	S
Pull-out drawer beneath sofa	O	N/A	O	N/A	N/A
Hide-a-bed	N/A	N/A	O	O	N/A
Lambrequin window treatments	S	S	S	S	S
Roller shades throughout	S	S	S	S	S
Mini blinds throughout	O	O	O	O	O
Carpeting with pad	S	S	S	S	S
Decorator clock and mirror	N/A	S	S	S	S
Select décor	S	N/A	N/A	N/A	N/A
Upgrade décor	O	S	S	S	S
19" color TV with full-function remote in front overhead with antenna booster and jack	S	S	S	S	S
Video package (VCR and control center)	O	O	O	O	O

Utilities	2750 LE	2960	3270	3275	3285
Air conditioner: 13,500-BTU (center)	S	N/A	N/A	N/A	N/A
Air conditioner: pre-wired for second air conditioner (rear)	S	N/A	N/A	N/A	N/A
Air conditioner: 11,000-BTU (rear)	O	N/A	N/A	N/A	N/A
Air conditioner: 13,500-BTU ducted central (front)	N/A	S	S	S	S
Air conditioner: 11,000-BTU ducted central (rear)	N/A	O	O	O	O
Air conditioner: 15,000-BTU ducted central upgrade (front)	N/A	O	O	O	O
Wall-mounted thermostatically controlled air conditioning	N/A	O	O	O	O
Furnace: 31,000-BTU electronic ignition, floor-ducted with surface-mounted door	S	N/A	N/A	N/A	N/A
Furnace: 31,000-BTU electronic ignition, floor-ducted with flush-mounted door	N/A	S	S	S	S
Water heater: 6-gallon gas with pilot ignition and surface-mounted door	S	N/A	N/A	N/A	N/A
Water heater: 6-gallon gas with electronic ignition and surface-mounted door	O	N/A	N/A	N/A	N/A
Water heater: 6-gallon gas with electronic ignition and flush-mounted door	N/A	S	S	S	S

Utilities (con't.)	2750 LE	2960	3270	3275	3285
Water heater bypass kit	O	S	S	S	S
Pre-wired for generator	S	N/A	N/A	N/A	N/A
Pre-wired for generator with auto changeover	N/A	S	S	S	S
Generator: 5.0 kW Generac® Impact (N/A with second roof A/C)	O	O	O	O	O
Generator: 5.5 kW Onan® Emerald Advantage	O	O	O	O	O
Generator: 7.0 kW Onan® Emerald Advantage (requires 50-amp service)	N/A	O	O	O	O
Converter: solid-state 45-amp, 12-volt without generator auto changeover switch	S	N/A	N/A	N/A	N/A
Converter: solid-state 45-amp, 12-volt with generator auto changeover switch	N/A	S	S	S	S
12-volt demand water pump	S	S	S	S	S
12-volt auxiliary battery	S	N/A	N/A	N/A	N/A
Dual 6-volt auxiliary batteries	N/A	S	S	S	S
Electronic battery-distribution center	S	S	S	S	S
Battery disconnect	N/A	S	S	S	S
30-amp, 120-volt service	S	S	S	S	S
50-amp, 120-volt service	N/A	O	O	O	O
Exterior shower	O	O	O	O	O
Enclosed and heated holding tanks	S	S	S	S	S
City water hookup	S	S	S	S	S
Telephone hookup	S	S	S	S	S
Cable TV/satellite hookup	S	S	S	S	S
Pre-wired for roof-mounted satellite dish	N/A	S	S	S	S
Exterior GFCI receptacle	S	S	S	S	S
Carbon monoxide detector	S	S	S	S	S
LP gas detector	S	S	S	S	S
Smoke detector	S	S	S	S	S

Weights and Measures	2750 LE	2960	3270	3275	3285
Chassis	W*	W/F*	W/F*	W/F*	W/F*
Wheelbase	158.5"	178"	216.5"	208"	208"
GVWR (lbs.)	15k	15k/15.7k	17k/20.5k	18k/20.5k	18k/20.5k
GCWR (lbs.)	21k	21k/21k	21k/26k	21k/26k	21k/26k
Overall length	28'11"	31'2"	34'9"	34'1"	35'4"
Overall width	101"	101"	101"	101"	101"
Overall height with A/C	11'3"	11'3"	11'3"	11'3"	11'3"
Fresh water system (appx. gal.)	60	69	69	69	69
Gray water (appx. gal.)	42	42	42	42	42
Black water (appx. gal.)	42	42	42	42	42
LP (lbs.)	82	82	82	82	82
Sleeping capacity	4	4	5	5	5
Std. wt. (appx. lbs.)	11550	11877/12325	14152/14457	14304/14874	14334/14904
Exterior storage capacity (cu. ft.)	66	68	63	73	53
Interior drawers/capacity (cu. ft.)	7/11	8/14	10/8	15/10	20/12

The weights listed are for units with full fuel tanks and no options. *Workhorse®/Ford®

Damon[®]
Value by Design



If you are interested in touring Damon's manufacturing facilities, please visit our web site or call 800-860-5658

Damon Corporation • P.O. Box 2888 • Elkhart, IN 46515
Literature or Dealers: 574-389-0179 or 800-577-5692
Customer service: 800-860-3812.
www.DamonRV.com



Due to constant product improvements, the specifications, component parts and standard/optional equipment are subject to change without notice or obligation. Product photography or diagrams may show equipment that is optional. Damon Corporation reserves the right to make changes in prices and models and to discontinue models without notice or obligation. Components, parts or chassis may have been manufactured at times other than the model year indicated. All capacities are approximate and dimensions are nominal. All dry weights are based on standard model features and do not include optional features or equipment. Various RV components and features may differ to conform to local codes.