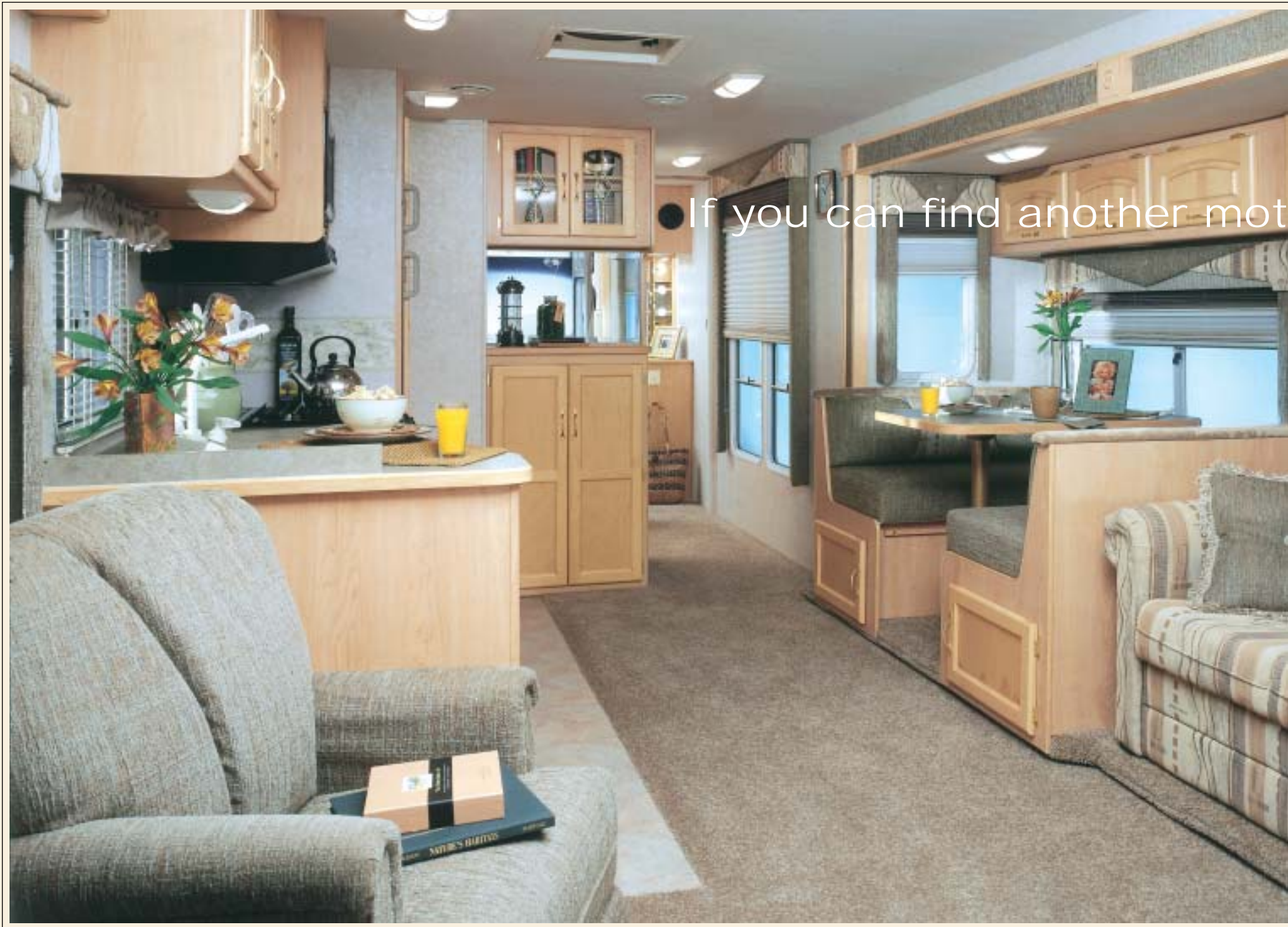




CHALLENGER 2003

DAMON DARES YOU.





● If you can find another mot



Go ahead. Check out our competitors. Challenger™ is the better value. We're sure of it. This is first-class transportation and a welcome haven all rolled into one beautiful package. Comparison shopping will prove to you how well Challenger challenges the notion that genuine luxury has to cost a fortune. We dare you to find another motorhome in its price range that has all these extraordinary Challenger features:

## Motorhome with features like this at Challenger's price ...

To make sure you don't have to leave anything behind, Challenger is equipped with **multiple pass-through storage compartments**.

For added protection and insulation, our exterior storage doors are a **full two inches thick** and fully insulated. All of our doors include convenient **steel paddle latches and gas pistons** to keep them open while you're loading your gear.

Challenger's stylish **gelcoated front and rear fiberglass caps** provide an elegant look that gives you the curb appeal of a motorhome priced much higher.

The optional **driver's side door** makes fuel stops a breeze. The door features a slider window and lock for greater comfort and security.

The **standard awnings** not only protect the slideouts from the weather, but also make it possible for you to enjoy the outdoors, rain or shine.

Challenger's **low-profile engine cover** minimizes the hump between the captain's chairs, making it much easier to enter and exit the cockpit.

The **12" x 12" vinyl tile floor** in the kitchen is easy to keep clean. And unlike wood floor tile, it will not scratch or dent.

Challenger's convenient **ABS box in the step well** can be used as a cooler. Now you don't have to make a trip through the living room every time you want another drink.

You don't have to settle for storing everything under your motorhome; Challenger has a substantial amount of **interior storage space**, with rugged **solid-wood cabinet doors and drawers**.

**Every single coach is weighed** before it leaves the factory. We don't use an average, like some manufacturers, so you'll know the exact amount of cargo that your Challenger can carry.

Molded ABS dash



Driver's door



Low-profile engine cover









It's easy to keep your cooking supplies organized with Challenger's **pantry**. It has adjustable shelves and roll-out drawers so it's simple to reach items, even when they're stored in the very back.

Challenger's **electric slideout system** operates far more smoothly and dependably than hydraulic systems. For one thing, it isn't apt to leak at high or low altitudes. Plus, it isn't subject to the corrosion of hydraulic systems. Result? Very little maintenance is required for a lifetime of efficient use.

If you're one of the 75 percent of motorhomers who tow a vehicle, you'll be happy to know that most Challengers come standard with a **5,000-lb. hitch**. Use it to tow a car, a pickup, even an SUV — Challenger is built to handle it.

**Four-point hydraulic leveling jacks** are standard on every slideout-model Challenger. They help stabilize the coach significantly, keeping it level and eliminating side-to-side motion as people walk through the interior. This is especially important with the added weight of a slideout section.



## men compare the price. Damon wins every time. Period.

Have a laptop or notebook computer you like to take with you on your travels? Challenger gives you **computer connections** (AC/DC outlets and a modem phone jack) under the dash on the passenger's side. Now it's easier than ever to get e-mail and surf the Internet on the road or at camp!

**Hand-crafted solid-oak cabinet doors** with attractive cathedral-cut fascia lend an extra measure of elegance to the interior décor. All doors have strong mortise and tenon joints and a radiant finish that will stand the test of time.

For a Damon Dare checklist for easy comparison shopping, visit our web site at [www.DamonRV.com](http://www.DamonRV.com). We're confident that these features put Challenger in a class of its own. So go ahead, shop around. Once you see everything that goes into a Challenger, we're confident you wouldn't dare settle for anything less.

ABS box in step well



Ample interior storage



Gigantic basement storage



Pullout pantry drawers





## The Sidewalls

Sidewalls are five layers thick:

- Exterior fiberglass
- Wood backer
- Aluminum frame
- Bead-foam insulation
- Interior wallboard

The walls are also vacuum-bond laminated for added strength and rigidity. The lamination process eliminates "soft walls," because it integrates all layers, turning them into one solid structure.

All wall openings — for doors, windows and other components — are framed in aluminum tubing with welded joints. This further strengthens the coach body.

## The Utilities

It's no problem to travel in all four seasons because of Challenger's heated holding tanks and fully contained plumbing systems. We've mounted the tanks horizontally, making service and maintenance easy — you don't have to cut any steel to access the tanks.

## The Floor

A water-resistant, structurewood floor supports the living area in the motorhome. Framed in 1.5-inch welded steel tubing, it is insulated with solid bead-foam insulation and protected with a galvanized underbelly, which will not rust or corrode.

## The Basement and Storage

The Challenger basement employs a strong, welded steel truss system. The trusses are horizontal to better distribute house-body weight. They also provide a central location for attaching the house and storage compartments. And they allow for Challenger's huge pass-through storage area.

..... The Roof

Challenger's roof is also vacuum-bond laminated for superior strength and rigidity.

It features an aluminum rafter support system with bowed rafters to maintain the roof's crowned shape. A crowned roof permits better water runoff, which helps prevent leaks. It also increases the insulation factor, especially around air-conditioner channels.



# Dare to go anywhere: Challenger's built to take it.

What makes the difference? Advanced engineering. Computer-aided design. Innovative manufacturing techniques. And paying attention to feedback from RVers just like you.

At Damon, we also maintain consistent standards. Many other manufacturers cut corners. Not us. Every motorhome we make, whatever the price, gets built the same way — the right way — with the same high-quality materials, components and construction techniques.

Leveling jacks



Electric slideout system



AC and DC power outlets and modem jack



..... The Chassis

Quality construction starts with the chassis. And Challenger uses only the finest: either a Ford® or Workhorse® chassis, depending on the floor plan.

Cashmere Taupe



Light Pewter



Medium Willow



Deluxe graphics



Bridgeport



Charleston



Manchester



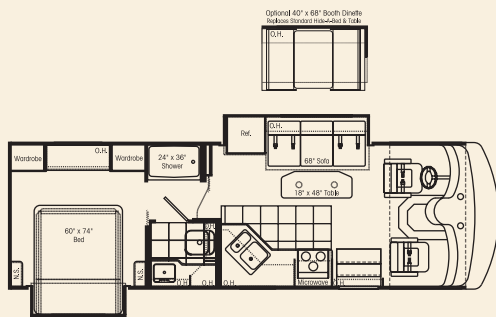
Providence



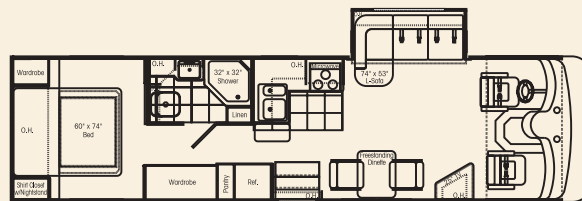
Maple



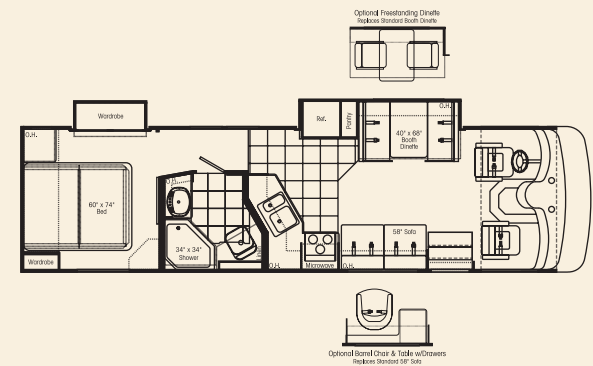
- 283** Living-area slideout • Bedroom slideout  
 • Unique coffee/dining table



- 315** Living-area slideout • Living-area entertainment center  
 • Large rear pass-through storage • Large eating-area windows



- 328** Living-area slideout • Large rear pass-through storage  
 • Fully contained bath • Large kitchen counter





package (standard)



# Daring choices ... to fit your life.

## Décor

Damon's designers and engineers have created a choice of exciting interiors that not only help you feel right at home, but also lend a sense of personality to your Challenger.

## Floor Plans

Whichever Challenger floor plan you choose, you can be sure it's thoughtfully laid out to provide the roomiest, most comfortable, most convenient mobile living experience you've ever had.

And if cargo carrying capacity is what you want, don't settle for our competitors' overweight models. Damon streamlines our chassis to give you the maximum carrying capacity.

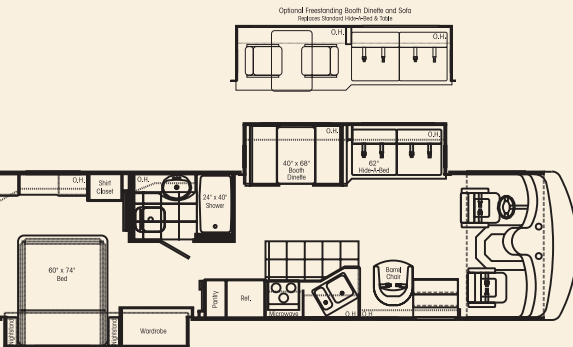
## Paint

Challenger's exterior has a remarkably fluid, energized look, thanks in large part to its clean, bold, optional paint stylings.

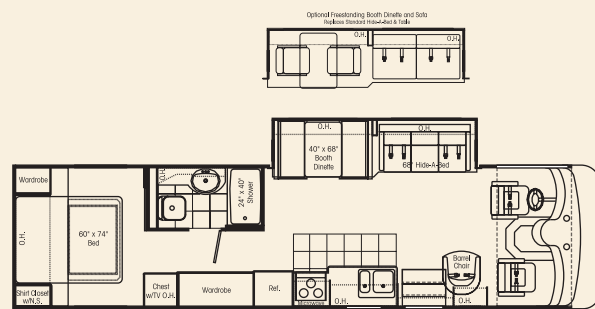
Oak



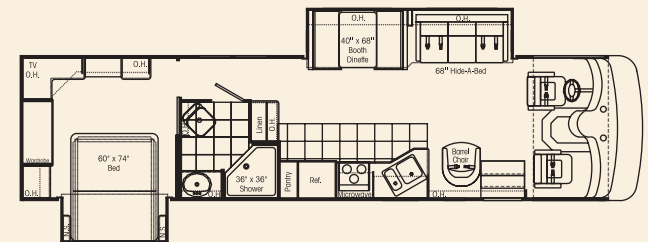
**329** Living-area slideout • Bedroom slideout with large closet



**335** Living-area slideout • Generous closet space



**348** Living-area slideout • Bedroom slideout • Bedroom vanity • Garden tub



| <b>Bathroom</b>                                 | <b>283</b> | <b>315</b> | <b>328</b> | <b>329</b> | <b>335</b> | <b>348</b> |
|---|------------|------------|------------|------------|------------|------------|
| Vinyl tile                                      | 0          | 0          | 0          | 0          | 0          | 0          |
| Shower with surround                            | S          | S          | S          | S          | S          | S          |
| Shower door                                     | S          | S          | S          | S          | S          | S          |
| Skylight in shower                              | S          | S          | S          | S          | S          | S          |
| Power vent                                      | S          | S          | S          | S          | S          | S          |
| Foot-flush toilet                               | S          | S          | S          | S          | S          | S          |
| Medicine cabinet                                | S          | S          | S          | S          | S          | S          |
| Hardwood-framed mirror                          | S          | S          | S          | S          | S          | S          |
| Wood-tone, T-mold countertops                   | S          | S          | S          | S          | S          | S          |
| <b>Bedroom</b>                                  | <b>283</b> | <b>315</b> | <b>328</b> | <b>329</b> | <b>335</b> | <b>348</b> |
| Innerspring mattress                            | S          | S          | S          | S          | S          | S          |
| Upgraded innerspring mattress                   | 0          | 0          | 0          | 0          | 0          | 0          |
| Bedspread and headboard                         | S          | S          | S          | S          | S          | S          |
| TV area and jack                                | S          | S          | S          | S          | S          | S          |
| 13" color TV                                    | 0          | 0          | 0          | 0          | 0          | N/A        |
| 19" color TV                                    | N/A        | N/A        | N/A        | N/A        | N/A        | 0          |
| Pin-up lights                                   | S          | S          | S          | S          | S          | S          |
| <b>Chassis</b>                                  | <b>283</b> | <b>315</b> | <b>328</b> | <b>329</b> | <b>335</b> | <b>348</b> |
| Leveling jacks                                  | S          | S          | S          | S          | S          | S          |
| Spare tire, wheel and bracket                   | S          | S          | S          | S          | S          | S          |
| Front and rear mud flaps                        | S          | S          | S          | S          | S          | S          |
| Radial tires                                    | S          | S          | S          | S          | S          | S          |
| Stainless steel wheel liners                    | S          | S          | S          | S          | S          | S          |
| Trailer hitch (5,000 lbs.)                      | N/A        | S          | S          | S          | S          | S          |
| Emergency start circuit                         | S          | S          | S          | S          | S          | S          |
| Under-hood light                                | S          | S          | S          | S          | S          | S          |
| Automatic transmission with overdrive           | S          | S          | S          | S          | S          | S          |
| Layer of neoprene vibration dampener            | S          | S          | S          | S          | S          | S          |
| <b>Cockpit</b>                                  | <b>283</b> | <b>315</b> | <b>328</b> | <b>329</b> | <b>335</b> | <b>348</b> |
| Molded ABS dash                                 | S          | S          | S          | S          | S          | S          |
| Burl instrument panel                           | S          | S          | S          | S          | S          | S          |
| Full instrumentation                            | S          | S          | S          | S          | S          | S          |
| Electronically controlled dash air conditioning | S          | S          | S          | S          | S          | S          |
| AM/FM/cassette stereo                           | S          | S          | S          | S          | S          | S          |
| AM/FM/cassette/CD                               | 0          | 0          | 0          | 0          | 0          | 0          |
| Cruise control                                  | S          | S          | S          | S          | S          | S          |
| Power steering                                  | S          | S          | S          | S          | S          | S          |
| Tilt steering wheel                             | S          | S          | S          | S          | S          | S          |
| Map lights                                      | S          | S          | S          | S          | S          | S          |
| Dash fans                                       | S          | S          | S          | S          | S          | S          |
| Driver's door with slider window                | 0          | 0          | 0          | 0          | 0          | 0          |
| Tinted wraparound windshield                    | S          | S          | S          | S          | S          | S          |
| Windshield privacy drape                        | S          | S          | S          | S          | S          | S          |
| Side-mounted power mirrors                      | S          | S          | S          | S          | S          | S          |
| Front-mounted power mirrors with heat           | 0          | 0          | 0          | 0          | 0          | 0          |
| Floor mats                                      | S          | S          | S          | S          | S          | S          |
| Reclining swivel captain's chairs               | S          | S          | S          | S          | S          | S          |

S = Standard    0 = Optional    N/A = Not available    IPO = In Place Of

| <b>Cockpit (con't.)</b>   | <b>283</b> | <b>315</b> | <b>328</b> | <b>329</b> | <b>335</b> | <b>348</b> |
|---|------------|------------|------------|------------|------------|------------|
| Ultra-leather captain's chairs (set of 2)   | 0          | 0          | 0          | 0          | 0          | 0          |
| 3-point, wall-mounted seat belts  | S          | S          | S          | S          | S          | S          |
| Sun visors  | S          | S          | S          | S          | S          | S          |
| Rosen® full-size sun visors   | 0          | 0          | 0          | 0          | 0          | 0          |
| Backup monitor system with audio  | 0          | 0          | 0          | 0          | 0          | 0          |
| Drink holders   | S          | S          | S          | S          | S          | S          |
| <b>Entry</b>  | <b>283</b> | <b>315</b> | <b>328</b> | <b>329</b> | <b>335</b> | <b>348</b> |
| Electric entrance step  | S          | S          | S          | S          | S          | S          |
| Integrated entrance step  | S          | S          | S          | S          | S          | S          |
| Entry-assist handle   | S          | S          | S          | S          | S          | S          |
| Deadbolt door lock  | S          | S          | S          | S          | S          | S          |
| Storage in stairwell  | S          | S          | S          | S          | S          | S          |
| Battery access in stairwell   | S          | S          | S          | S          | S          | S          |
| <b>Exterior</b>   | <b>283</b> | <b>315</b> | <b>328</b> | <b>329</b> | <b>335</b> | <b>348</b> |
| Paint package   | 0          | 0          | 0          | 0          | 0          | 0          |
| Fog lights  | S          | S          | S          | S          | S          | S          |
| Wide-body design  | S          | S          | S          | S          | S          | S          |
| Radius-cornered domed roof  | S          | S          | S          | S          | S          | S          |
| Roof vents  | S          | S          | S          | S          | S          | S          |
| Roof rack   | S          | S          | S          | S          | S          | S          |
| Rear ladder   | S          | S          | S          | S          | S          | S          |
| Aerodynamic front and rear fiberglass caps  | S          | S          | S          | S          | S          | S          |
| Contoured front integrated bumper   | S          | S          | S          | S          | S          | S          |
| Automotive-style rear bumper  | S          | S          | S          | S          | S          | S          |
| Awning rail   | S          | S          | S          | S          | S          | S          |
| Side-mounted patio awning (Awnings not available on wide-body models in some locations. Check local regulations for applicable laws.) | S          | S          | S          | S          | S          | S          |
| Side-mounted awning over slideout   | S          | S          | S          | S          | S          | S          |
| Entry-assist handle   | S          | S          | S          | S          | S          | S          |
| White smooth fiberglass exterior with deluxe graphics   | S          | S          | S          | S          | S          | S          |
| Upgraded gelcoated sidewall   | 0          | 0          | 0          | 0          | 0          | 0          |
| Locking exterior storage doors  | S          | S          | S          | S          | S          | S          |
| White-trimmed, radius-topped entrance door  | S          | S          | S          | S          | S          | S          |
| White-framed, radius-corner slider windows  | S          | S          | S          | S          | S          | S          |
| Dual-pane windows   | 0          | 0          | 0          | 0          | 0          | 0          |
| Porch light   | S          | S          | S          | S          | S          | S          |
| Easy-to-clean, lighted, rotocast storage compartments   | S          | S          | S          | S          | S          | S          |
| Full basement pass-through storage  | S          | S          | S          | S          | S          | S          |
| Gas spring supported storage doors  | S          | S          | S          | S          | S          | S          |
| RVQ grill   | 0          | 0          | 0          | 0          | 0          | 0          |
| <b>Kitchen</b>  | <b>283</b> | <b>315</b> | <b>328</b> | <b>329</b> | <b>335</b> | <b>348</b> |
| Refrigerator: flush-mounted, double-door  | S          | S          | S          | S          | S          | S          |
| Refrigerator: large flush-mounted, double-door  | 0          | 0          | 0          | 0          | 0          | 0          |



| Kitchen (con't.)  | 283 | 315 | 328 | 329 | 335 | 348 |
|---|-----|-----|-----|-----|-----|-----|
| Refrigerator: solid-wood front (oak or maple)   | 0   | 0   | 0   | 0   | 0   | 0   |
| 3-burner range and oven   | S   | S   | S   | S   | S   | S   |
| Folding range cover   | S   | S   | S   | S   | S   | S   |
| Microwave oven  | S   | S   | S   | S   | S   | S   |
| Lighted power range hood  | S   | S   | S   | S   | S   | S   |
| Monitor panel with LPG readout  | S   | S   | S   | S   | S   | S   |
| Double-bowl sink with oversized dish bowl   | S   | S   | S   | S   | S   | S   |
| Sink cover  | S   | S   | S   | S   | S   | S   |
| Pantry  | N/A | S   | S   | N/A | N/A | S   |
| Wood-tone, T-mold countertops   | S   | S   | S   | S   | S   | S   |
| Solid-wood cabinet doors throughout<br>(flat-panel lower, raised-panel upper)<br>(oak or maple) | S   | S   | S   | S   | S   | S   |
| 12" x 12" vinyl tile flooring   | S   | S   | S   | S   | S   | S   |
| Wood-plank flooring (oak or maple)  | 0   | 0   | 0   | 0   | 0   | 0   |
| Booth dinette with padded top   | 0   | N/A | S   | S   | S   | S   |
| Freestanding dinette with 2 chairs  | N/A | S   | 0   | 0   | 0   | 0   |
| 2 folding chairs (available with<br>freestanding dinette only)                                  | N/A | 0   | 0   | 0   | 0   | 0   |
| Mini blinds   | S   | S   | S   | S   | S   | S   |
| Wallpaper border  | S   | S   | S   | S   | S   | S   |
| Fire extinguisher   | S   | S   | S   | S   | S   | S   |
| Fantastic® power vent   | 0   | 0   | 0   | 0   | 0   | 0   |
| Living Area   | 283 | 315 | 328 | 329 | 335 | 348 |
| Barrel chair(s)   | N/A | N/A | 0   | S   | S   | S   |
| Sofa bed  | S   | N/A | S   | N/A | N/A | N/A |
| Hide-a-bed  | N/A | N/A | N/A | S   | S   | S   |
| L-shape sofa  | N/A | S   | N/A | N/A | N/A | N/A |
| Lambrequin window treatments  | S   | S   | S   | S   | S   | S   |
| Day/night shades (except kitchen)   | S   | S   | S   | S   | S   | S   |
| 100% nylon carpeting with stain<br>treatment and padding  | S   | S   | S   | S   | S   | S   |
| 19" color TV in cockpit overhead with<br>full-function remote, antenna booster and jack         | S   | N/A | S   | S   | S   | S   |
| 25" color TV in entertainment<br>center with full-function remote,<br>antenna booster and jack  | N/A | S   | N/A | N/A | N/A | N/A |
| Video package (VCR and control center)  | 0   | 0   | 0   | 0   | 0   | 0   |
| Decorator clock and mirror  | S   | S   | S   | S   | S   | S   |
| Fabric ceiling  | S   | S   | S   | S   | S   | S   |
| Utilities   | 283 | 315 | 328 | 329 | 335 | 348 |
| Air conditioner: 13,500-BTU<br>ducted central (front)   | S   | S   | S   | S   | S   | S   |
| Air conditioner: 15,000-BTU ducted central<br>upgrade (front)                                   | 0   | 0   | 0   | 0   | 0   | 0   |
| Air conditioner: 11,000-BTU ducted central (rear)   | 0   | 0   | 0   | 0   | 0   | 0   |
| Wall-mounted thermostatically controlled<br>air conditioning                                    | 0   | 0   | 0   | 0   | 0   | 0   |

| Utilities (con't.)   | 283         | 315         | 328         | 329         | 335         | 348         |
|--|-------------|-------------|-------------|-------------|-------------|-------------|
| Furnace: 35,000-BTU electronic ignition,<br>floor-ducted           | S           | S           | S           | S           | S           | S           |
| Water heater: 6-gallon gas with electronic ignition                | S           | S           | S           | S           | S           | S           |
| Water heater bypass kit  | S           | S           | S           | S           | S           | S           |
| Pre-wired for generator with auto changeover                       | S           | S           | S           | S           | S           | S           |
| Generator: 5.0 kW Generac® Impact                                  | 0           | 0           | 0           | 0           | 0           | 0           |
| Generator: 5.5 kW Onan® Marquis<br>Gold™ (requires 50-amp service) | 0           | 0           | 0           | 0           | 0           | 0           |
| Generator: 7.0 kW Onan® Marquis<br>Gold™ (requires 50-amp service) | 0           | 0           | 0           | 0           | 0           | 0           |
| Converter: solid-state 45-amp, 12-volt                             | S           | S           | S           | S           | S           | S           |
| 12-volt demand water pump  | S           | S           | S           | S           | S           | S           |
| Dual 6-volt auxiliary batteries                                    | S           | S           | S           | S           | S           | S           |
| Electronic battery distribution center                             | S           | S           | S           | S           | S           | S           |
| Battery disconnect   | S           | S           | S           | S           | S           | S           |
| 30-amp, 120-volt service   | S           | S           | S           | S           | S           | S           |
| 50-amp, 120-volt service<br>(N/A with 5.0 kW Generac® generator)   | 0           | 0           | 0           | 0           | 0           | 0           |
| Exterior GFCI receptacle   | S           | S           | S           | S           | S           | S           |
| Enclosed heated potable and holding tanks                          | S           | S           | S           | S           | S           | S           |
| City water hookup  | S           | S           | S           | S           | S           | S           |
| Telephone hookup   | S           | S           | S           | S           | S           | S           |
| Cable TV/satellite hookup  | S           | S           | S           | S           | S           | S           |
| Pre-wired for roof-mounted satellite dish                          | S           | S           | S           | S           | S           | S           |
| Exterior shower  | 0           | 0           | 0           | 0           | 0           | 0           |
| Carbon monoxide detector   | S           | S           | S           | S           | S           | S           |
| LP gas detector  | S           | S           | S           | S           | S           | S           |
| Smoke detector   | S           | S           | S           | S           | S           | S           |
| Weights and Measures   | 283         | 315         | 328         | 329         | 335         | 348         |
| Chassis  | W/F*        | W/F*        | W/F*        | W/F*        | W/F*        | W/F*        |
| Wheelbase  | 178"        | 216.5"      | 208"        | 216.5"      | 216.5"      | 228"        |
| GVWR (lbs.)  | 18k/20.5k   | 20.7k/20.5k | 20.7k/20.5k | 20.7k/20.5k | 20.7k/20.5k | 20.7k/22k   |
| GCWR (lbs.)  | 21k/26k     | 26k/26k     | 26k/26k     | 26k/26k     | 26k/26k     | 26k/26k     |
| Overall length   | 28'1"       | 33'9"       | 33'9"       | 33'9"       | 34'7"       | 36'         |
| Overall width  | 101"        | 101"        | 101"        | 101"        | 101"        | 101"        |
| Overall height with A/C  | 11'7"       | 11'7"       | 11'7"       | 11'7"       | 11'7"       | 12'11'9"    |
| Fresh water sys. (appx. gal.)                                      | 75          | 75          | 60          | 60          | 75          | 75          |
| Gray-water (appx. gal.)  | 50          | 50          | 50          | 50          | 50          | 50          |
| Black-water (appx. gal.)   | 50          | 50          | 50          | 50          | 50          | 50          |
| LP (lbs.)  | 103.5       | 103.5       | 103.5       | 103.5       | 103.5       | 103.5       |
| Sleeping capacity  | 4           | 4           | 4           | 4           | 4           | 4           |
| Std. wt. (appx. lbs.)  | 13759/14329 | 15986/15236 | 15625/14875 | 16874/16124 | 16289/15539 | 16999/16329 |
| Exterior storage (cu. ft.)   | 71          | 120         | 122         | 152         | 158         | 167         |
| Interior drawer/capacity (cu. ft.)                                 | 14/8        | 23/12       | 21/13       | 13/9        | 14/15       | 23/15       |

The weights listed are for units with full fuel tanks and no options. \*Workhorse®/Ford®

*Damon*<sup>®</sup>  
Value by Design



If you are interested in touring Damon's manufacturing facilities, please visit our web site or call 800-860-5658.



Due to constant product improvements, the specifications, component parts and standard/optional equipment are subject to change without notice or obligation. Product photography or diagrams may show equipment that is optional. Damon Corporation reserves the right to make changes in prices and models and to discontinue models without notice or obligation. Components, parts or chassis may have been manufactured at times other than the model year indicated. All capacities are approximate and dimensions are nominal. All dry weights are based on standard model features and do not include optional features or equipment. Various RV components and features may differ to conform to local codes.

DC 8/02 © 2002 Damon Corporation Printed in U.S.A.

**Damon Corporation • P.O. Box 2888 • Elkhart, IN 46515**

Literature or Dealers: 574-389-0179 or 800-577-5692

Customer service: 800-860-3812.

[www.DamonRV.com](http://www.DamonRV.com)