

2003 *Dutchmen*

Travel Trailers & Fifth Wheels




Dutchmen
Freedom to Explore



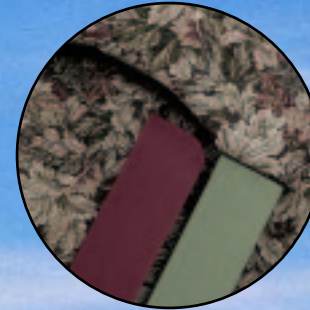
■ 2003 SPORT TRAVEL TRAILERS & FIFTH WHEELS



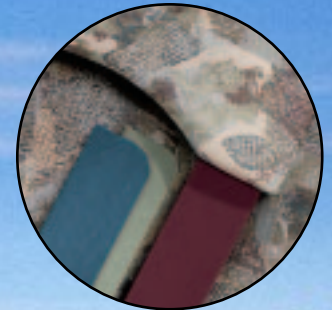
High end decors in an affordable unit!

mountain *grandeur*

Interior Decors



Longtime
Green or
Rose



Picasso
Rose, Green
or Blue

The Sport enlivens your family outings with a playful spirit that's always ready for fun. Affordably priced, it's packaged with all the essentials and loads of extras to give you the winning edge on outstanding value. But don't let the affordable price fool you. The Sport packs a big punch when it comes to quality. Built with top grade components, these road tough units have the endurance to keep up with families who love to play hard.

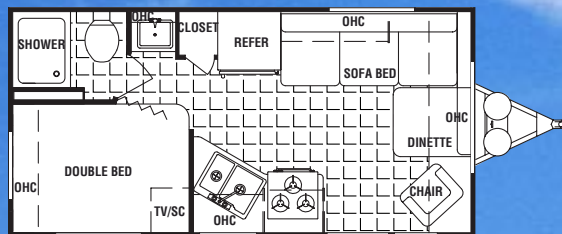


2003 19T

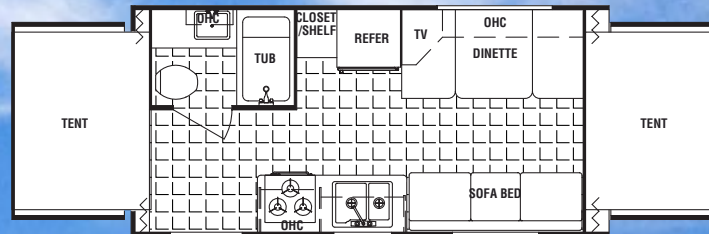
Expandable models feature CAVLAR-15 tents with a 5 year warranty

2003 SPORT TRAVEL TRAILER FLOOR PLANS

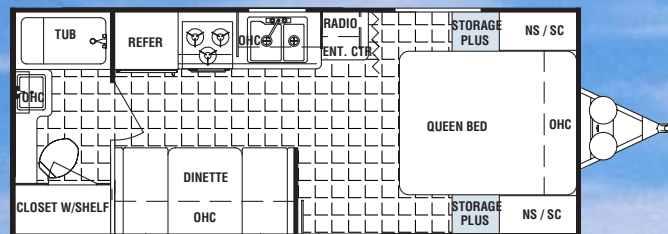
19F



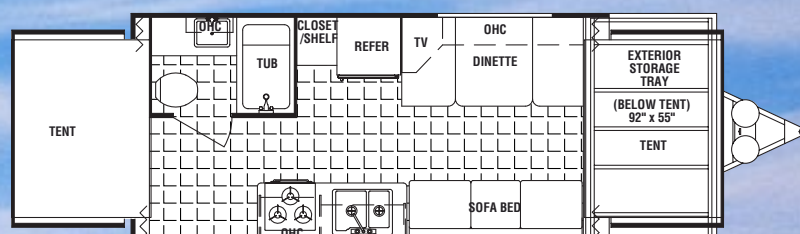
19T



23F

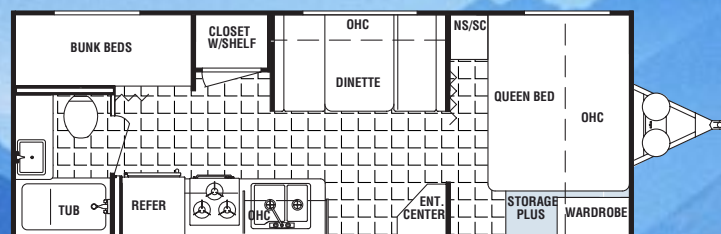


23TXS

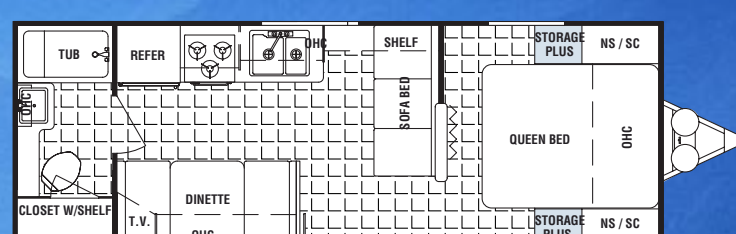


24B

Option T

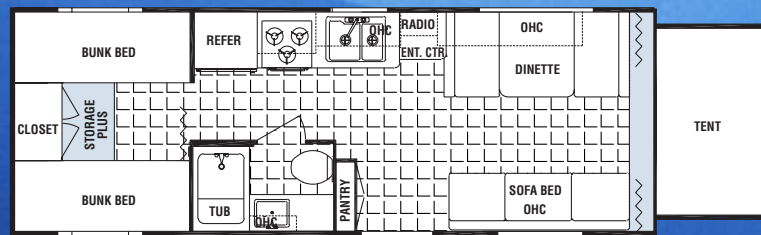


25F



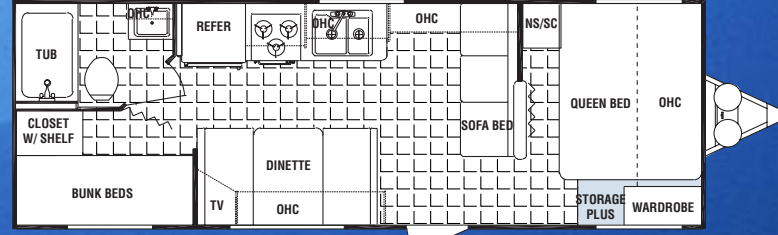
25QT

Option V



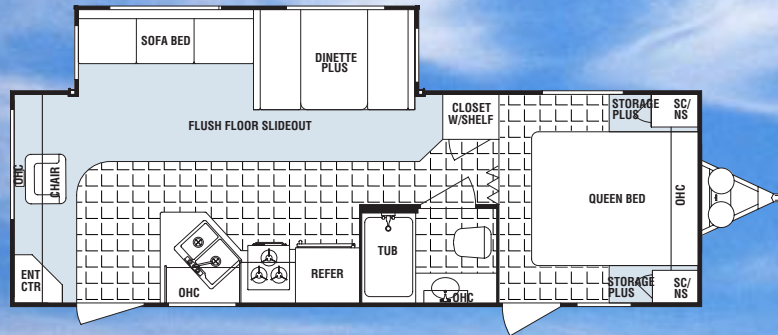
26B

Option T



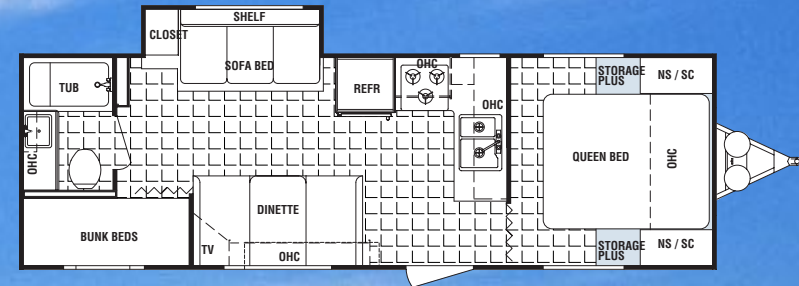
2003 SPORT TRAVEL TRAILER FLOOR PLANS

26L-DSL



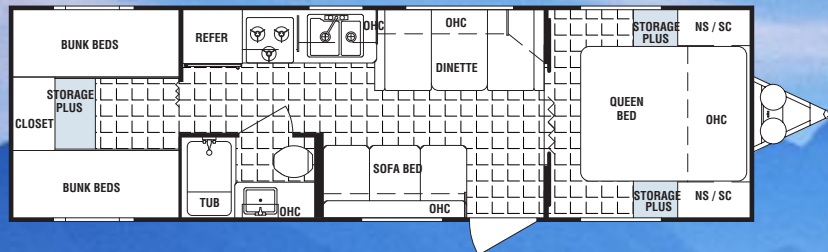
28B-SSL

Option T

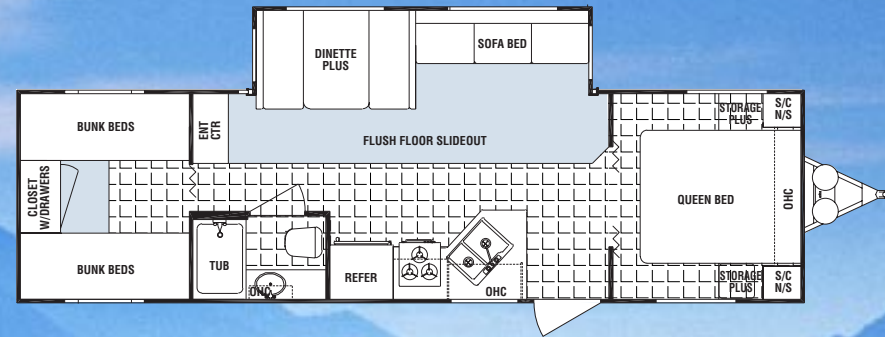


29Q

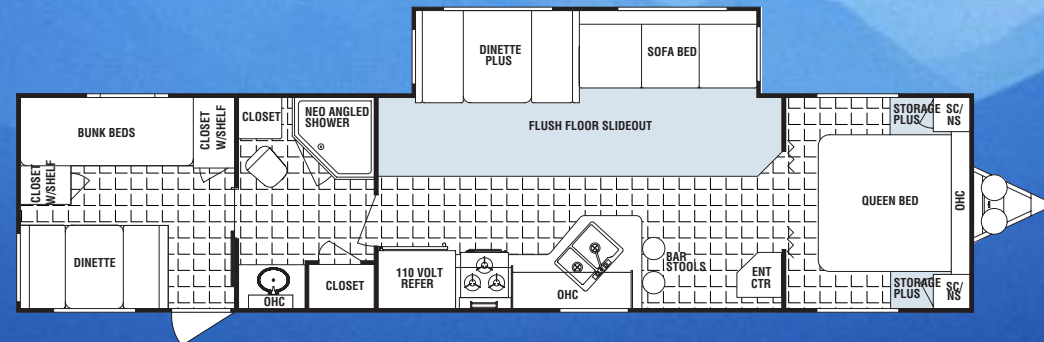
Option V



31B-DSL

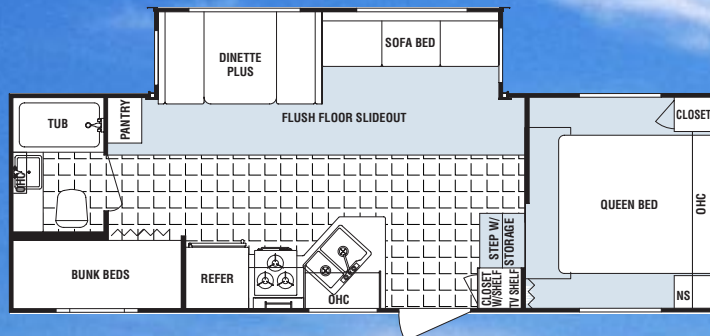


38B-DSL

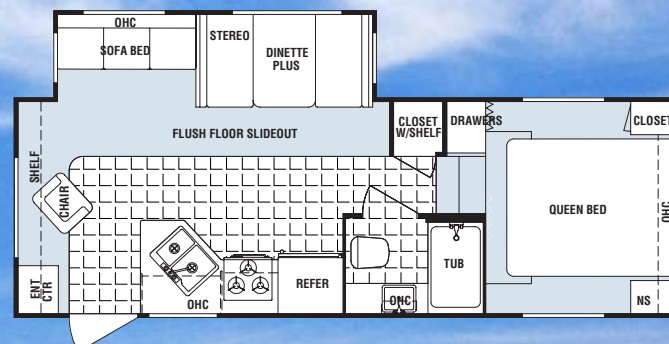


2003 SPORT FIFTH WHEEL FLOOR PLANS

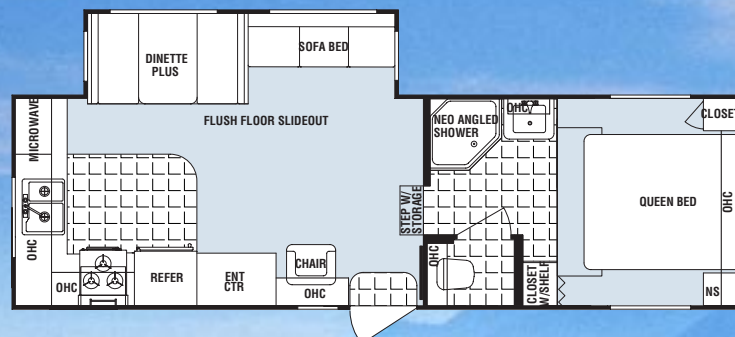
24B-M5



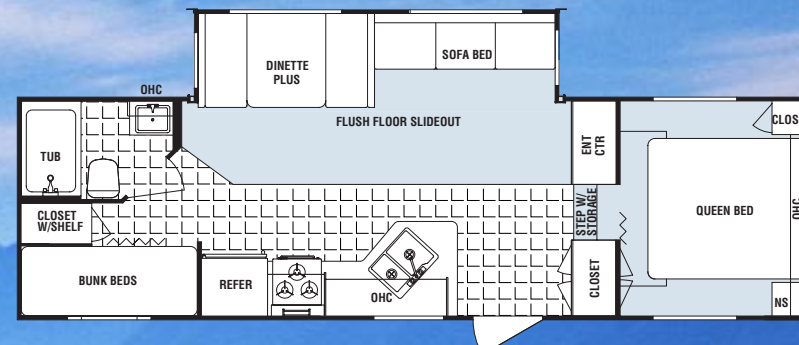
24L-M5



26K-M5



27B-M5



SPORT SPECIFICATIONS & WEIGHTS

	TRAVEL TRAILERS													FIFTH WHEELS			
Model Number	19F	19T	23F	23TXS	24B	25F	25QT	26B	26L-DSL	28B-SSL	29Q	31B-DSL	38B-DSL	24B-M5	24L-M5	26K-M5	27B-M5
Length	20' 3"	20' 4"	23' 6"	25' 3"	25' 2"	26' 3"	26' 3"	27' 10"	29' 8"	29' 6"	31' 4"	33'	39' 10"	27' 10"	26' 3"	28' 11"	30' 8"
Exterior Width	8'	8'	8'	8'	8'	8'	8'	8'	8'	8'	8'	8'	8'	8'	8'	8'	8'
Exterior Height	10' 4"	10' 2"	10' 3"	10' 5"	11'	10' 4"	10' 2"	10' 3"	10' 11"	10' 4"	10' 7"	10' 11"	11'	11' 8"	11' 6"	11' 7"	12'
Hitch Dry Weight	508	472	512	376	540	492	668	570	694	506	660	882	1184	900	836	1026	1228
Gross Vehicle Weight	7508	7472	7512	7376	7540	7492	7668	7570	7694	7506	7660	9682	11344	7900	7836	9826	10028
Unloaded Vehicle Weight	3990	3908	4204	4000	4452	4348	4598	4726	6378	5268	5338	6968	7930	6532	6444	7040	7212
Net Carrying Capacity	3518	3564	3308	3000	3088	3114	3070	2844	1316	2238	2322	2714	3414	1368	1392	2786	2816
Fresh Water Cap. (approx.)	36	36	36	36	36	36	36	36	47	36	36	47	47	47	47	47	47
Dual Holding Tanks (approx.)	30	60	60	60	60	60	60	60	60	60	60	60	90	60	60	90	60
Tire Size	ST205/75D15C								ST205/75R15C	ST205/75D15C	ST205/75R15C	ST225/75R15D	ST205/75D15C	ST225/75D15C	ST225/75R15D	ST225/75D15C	ST225/75D15C
Furnace Size BTU's	20	20	20	20	20	20	20	25	31	31	31	35	35	31	31	31	31

■ 2003 LITE TRAVEL TRAILERS



Raised panel doors and tile like flooring standard!

27BG shown in Berkley Blue (Sleeps 8)



27BG in Berkley Blue

spacious horizons

Interior Decors



Storage, storage, storage!
27BG with optional Pac-N-Play (side)



Imperial
Rose & Green



Copen Green



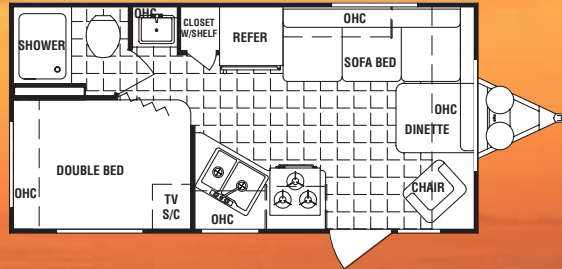
Berkley Blue &
Green

Dutchmen Lite travel trailers have the towing advantage many families are looking for. They're light in weight, but definitely not light on quality and value. They're designed to give you the best of both worlds. You get a lighter weight for easy handling along with comfort, convenience, and style in a quality built unit. You'll find a cache of features to make your family camping trips more carefree and enjoyable. Plus, Dutchmen's innovative Pac-N-Play takes storage to a whole new level!

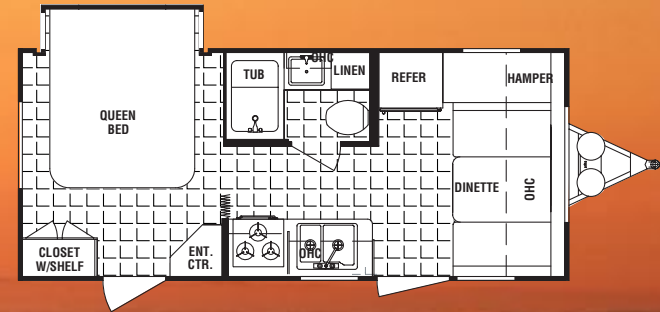
2003 LITE TRAVEL TRAILER FLOOR PLANS ■

19FL

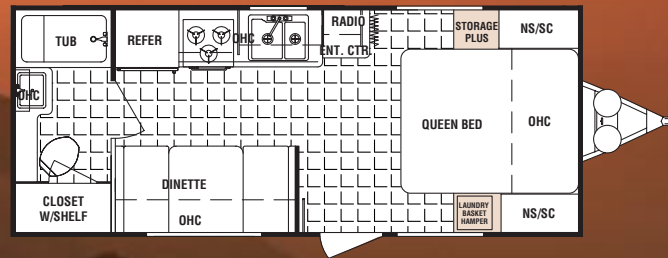
Option P



22BS

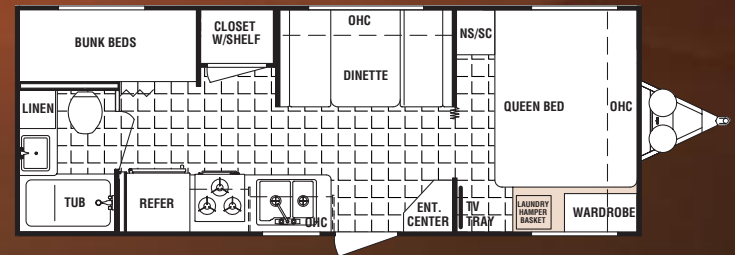


23FB



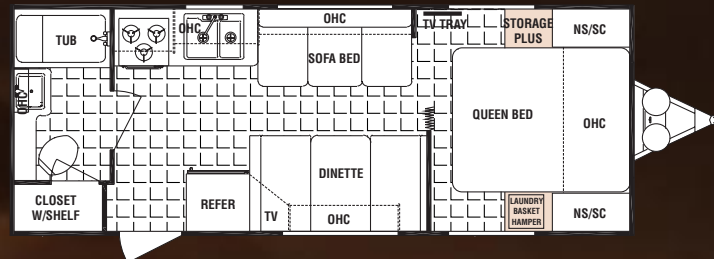
24BH

Options S, T



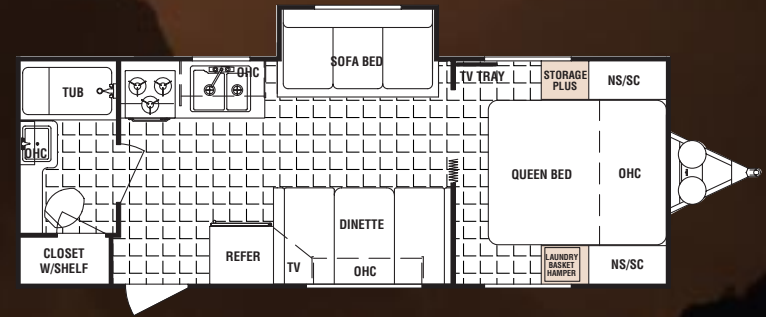
24QB

Option C
(Opt. 2nd
Entry Door in
Bedroom)



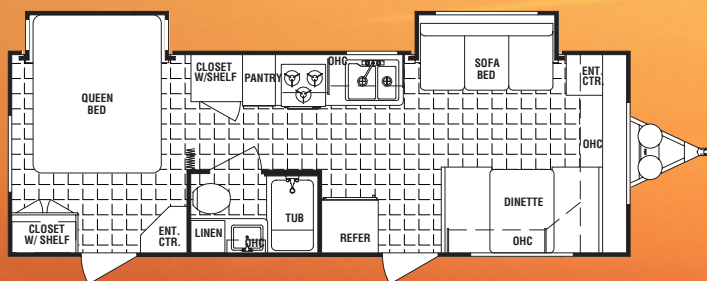
24QB-SSL

Option C
(Opt. 2nd
Entry Door in
Bedroom)



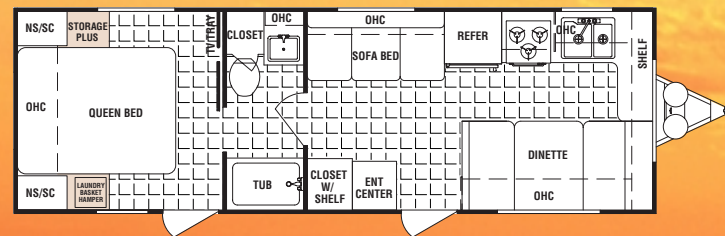
2003 LITE TRAVEL TRAILER FLOOR PLANS

26BS-SSL



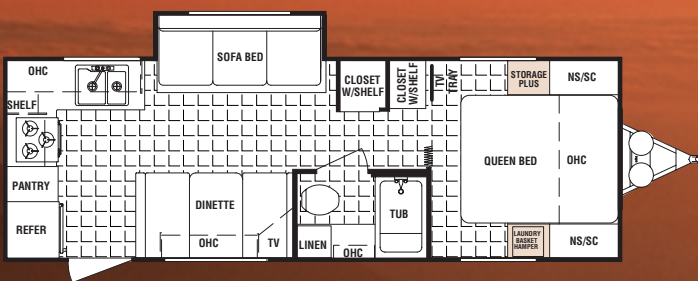
26FK

Option C
(Delete Rear Door)



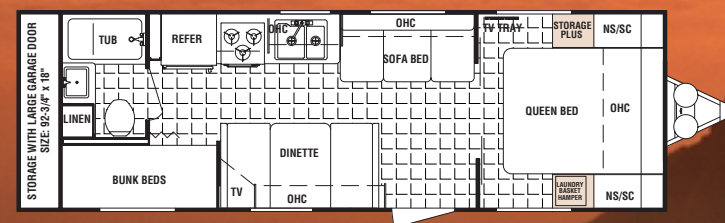
26QB-SSL

Option C
(Opt. 2nd Entry Door in Bedroom)



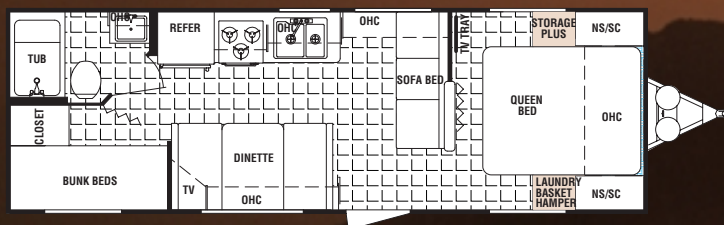
27BG

Options
S,T



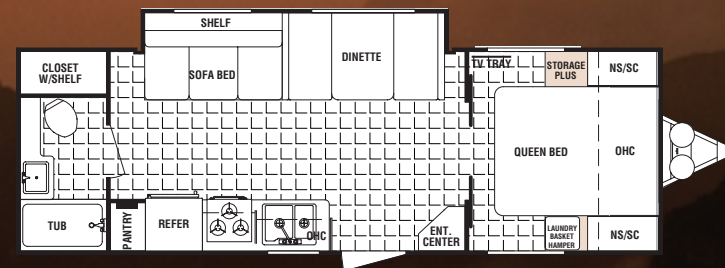
27BH

Options
S,T,P,B



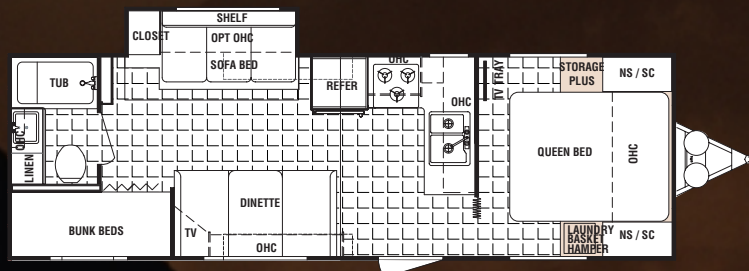
27FB-SL

Option C

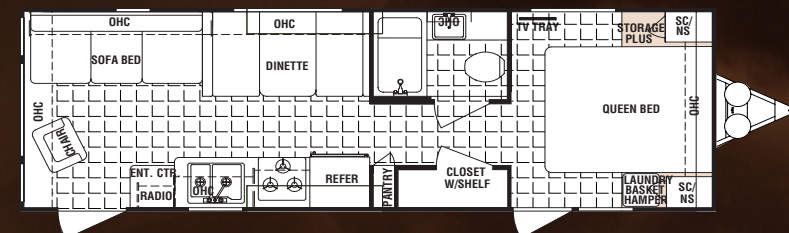


28BH-SSL

Options
S,T



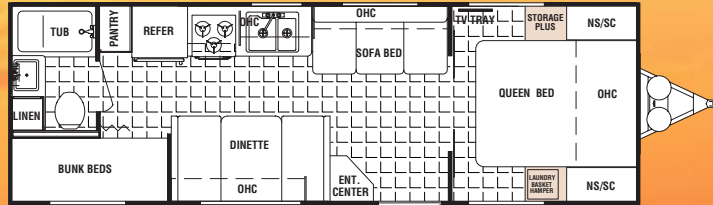
28RL-SSL



2003 LITE TRAVEL TRAILER FLOOR PLANS

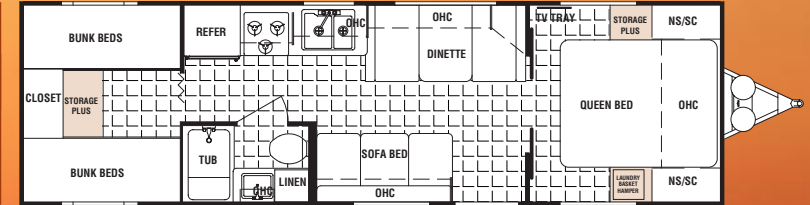
29BH

Options
C, S, T



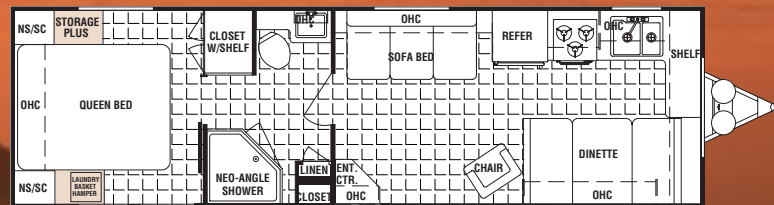
29QB

Options
C, V, A, J



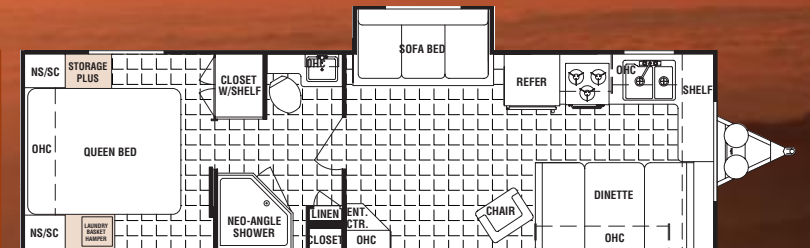
30FK

Option C
(Delete Rear
Door)



30FK-SSL

Option C
(Delete Rear
Door)



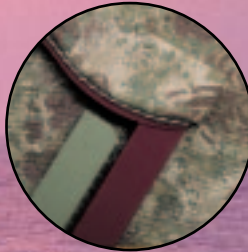
LITE SPECIFICATIONS & WEIGHTS

	TRAVEL TRAILERS																	
Model Number	19FL	22BS	23FB	24BH	24QB	24QB-SSL	26BS-SSL	26FK	26QB-SSL	27BG	27BH	27FB-SL	28BH-SSL	28RL-SSL	29BH	29QB	30FK	30FK-SSL
Length	20' 3"	22' 6"	23' 6"	25' 2"	25' 3"	26' 2"	27' 8"	27' 8"	27' 8"	29' 3"	28' 7"	28' 7"	29' 4"	29' 3"	28' 8"	31' 4"	31' 4"	31' 4"
Exterior Width	8'	8'	8'	8'	8'	8'	8'	8'	8'	8'	8'	8'	8'	8'	8'	8'	8'	8'
Exterior Height	10' 2"	10' 4"	10' 3"	11'	10' 3"	10' 4"	10' 4"	10' 4"	10' 4"	10' 2"	10' 3"	10' 3"	10' 2"	10' 3"	10' 4"	10' 7"	10' 4"	10' 4"
Hitch Dry Weight	508	438	512	540	476	528	824	840	464	456	642	734	506	554	664	660	806	880
Gross Vehicle Weight	7508	7438	7512	7540	7476	7528	7824	7840	7464	7456	7642	7734	7506	7554	7664	7660	7806	7880
Unloaded Vehicle Weight	3990	4436	4204	4452	4516	4906	5430	4904	5316	5170	5006	5364	5268	5280	5004	5338	5310	5640
Net Carrying Capacity	3518	2972	3308	3088	2960	2622	2394	2936	2148	2286	2636	2370	2238	2274	2660	2322	2496	2234
Fresh Water Cap. (approx.)	36	36	36	36	36	36	36	36	36	36	36	36	36	36	36	36	36	36
Dual Holding Tanks (approx.)	60	60	60	60	60	60	60	60	60	60	60	60	60	60	60	60	60	60
Tire Size	ST205/75R15C		ST205/75D15C		ST205/75R15C													
Furnace Size BTU's	20	20	20	20	20	25	25	25	25	30	25	31	31	31	25	31	31	31

■ 2003 CLASSIC TRAVEL TRAILERS & FIFTH WHEELS



Interior Decors



Mont Blanc Green or Rose



Blossom Green



Ocean Blue

shimmering seas

Optional bed slides increase storage

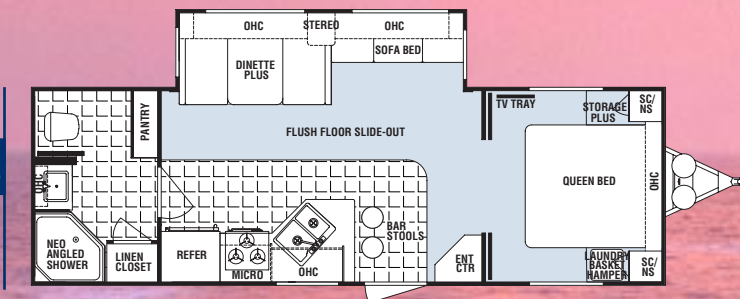


Experience a higher level of relaxation and contentment with the Dutchmen Classic. Beautiful interiors designed with residential decors give you the comfort and convenience of home while experiencing the pleasures of travel. Whether weekendng or traveling across the country, you'll appreciate the many fine features that enhance your enjoyment and eliminate the difficulties. The Classic series includes travel trailers as well as mid-profile and high profile fifth wheels. Whichever type of unit you prefer, you're assured of the best in RVing.

2003 CLASSIC TRAVEL TRAILER FLOOR PLANS ■

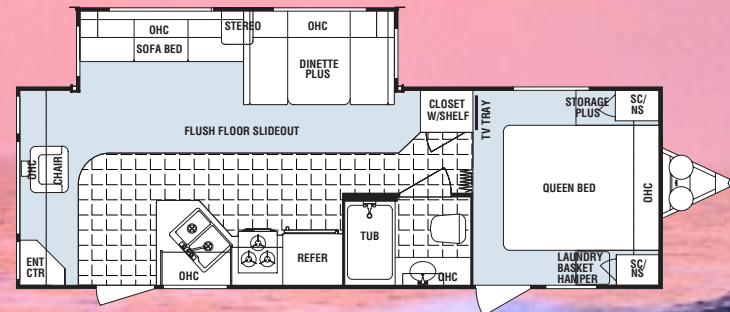
26FB-DSL

Option C



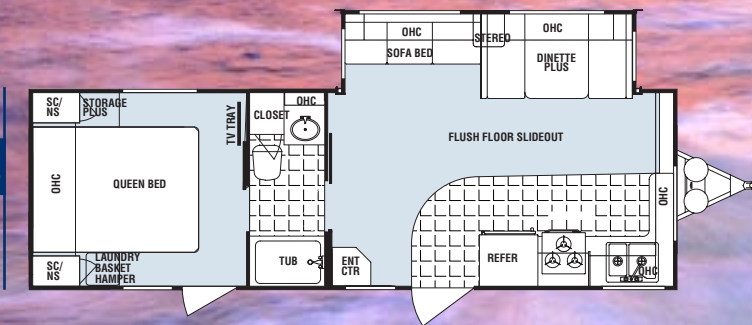
26RL-DSL

Option C
(Delete
Bedroom
Entry Door)



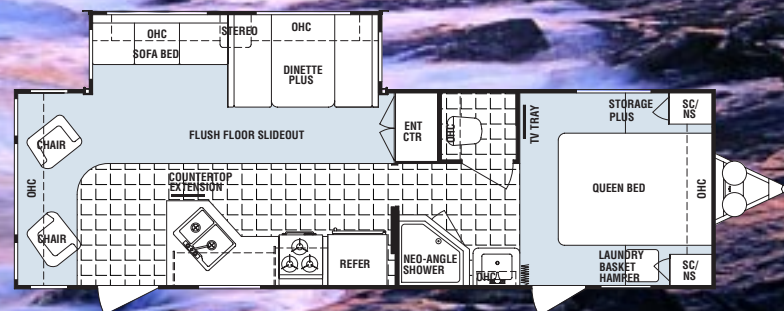
27FK-DSL

Options C
(Delete Rear
Door), M



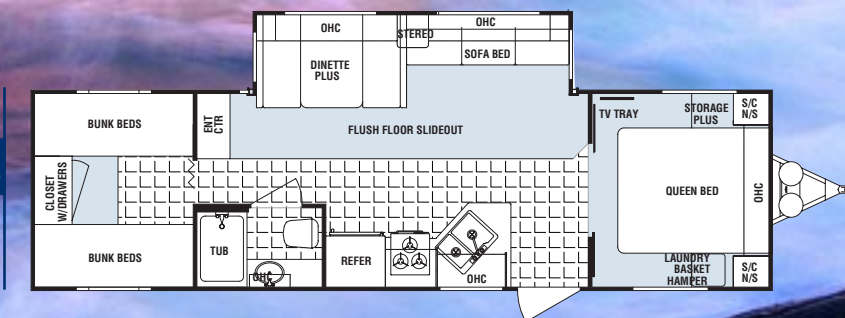
30RL-DSL

Options C (Delete
Bedroom Entry
Door), M



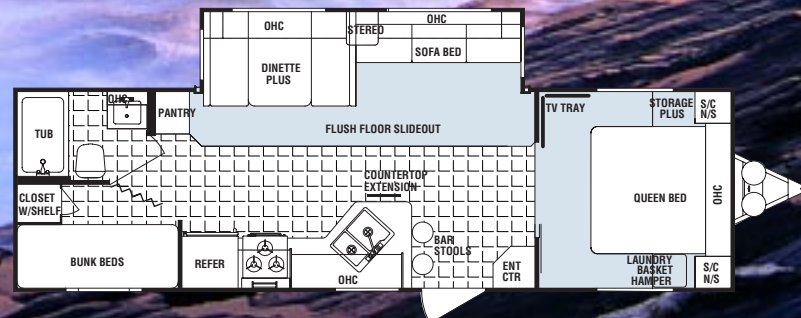
31BH4-DSL

Options
C, A, J



31BH-DSL

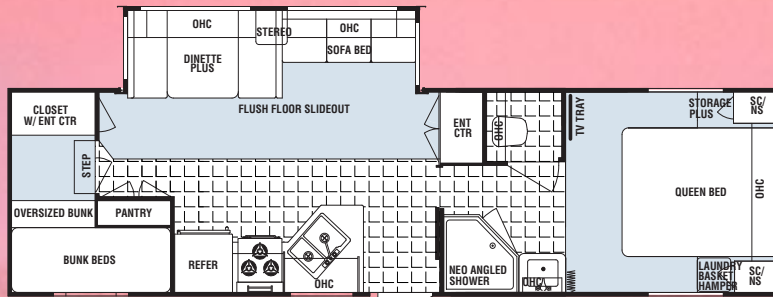
Options
P, B, S, C



2003 CLASSIC TRAVEL TRAILER FLOOR PLANS

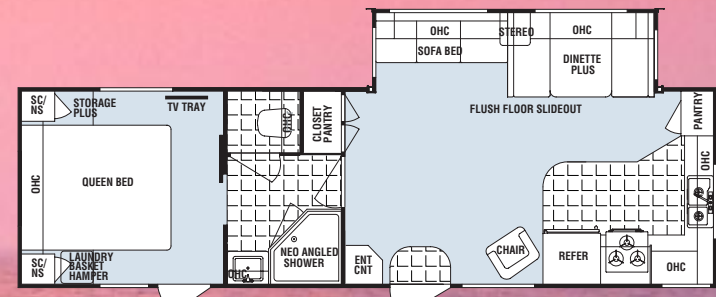
31BK-DSL

Options
C, Y, M



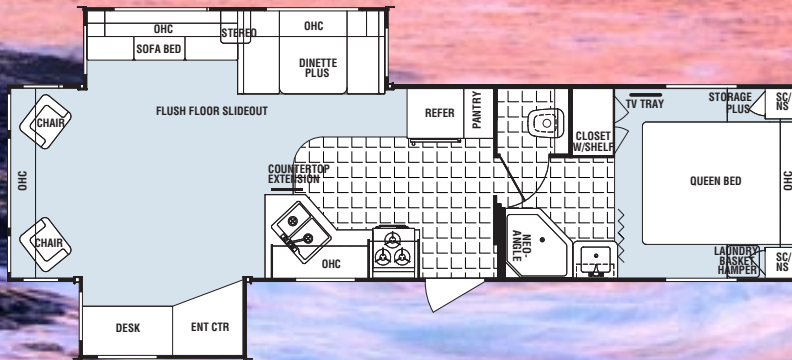
31FK-DSL

Options C
(Delete
Rear Door),
M



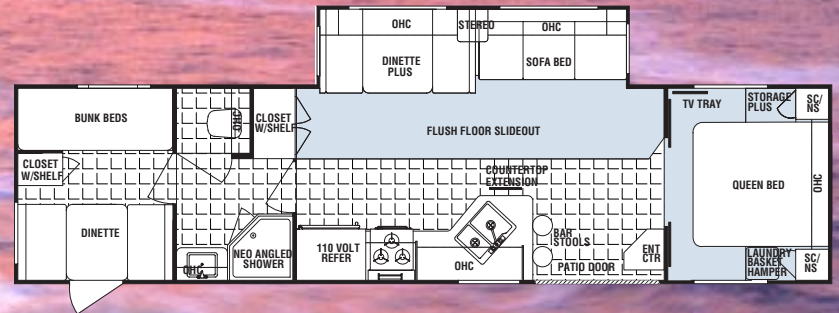
35ES-DSL

Options
C, M, W



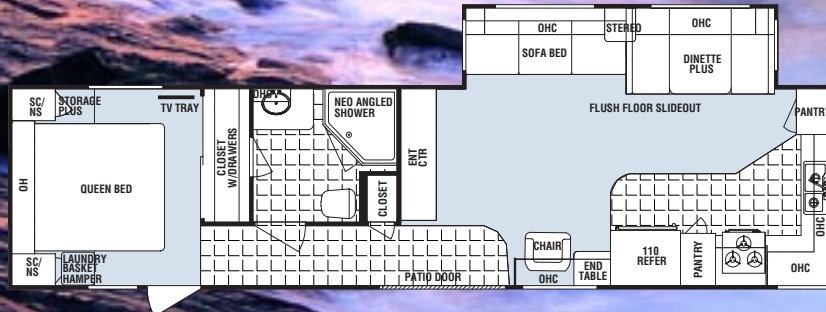
36FB-DSL

Options
C, N, H, S, A



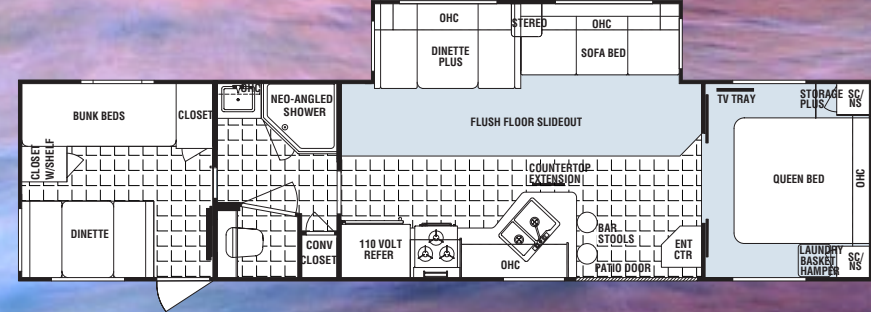
36FK-DSL

Options C, M
(Rear)
(Vanity
Replaces
Closet with
Drawers)



38FB-DSL

Options
C, M
(Rear), N,
G, L



38BH-DSL

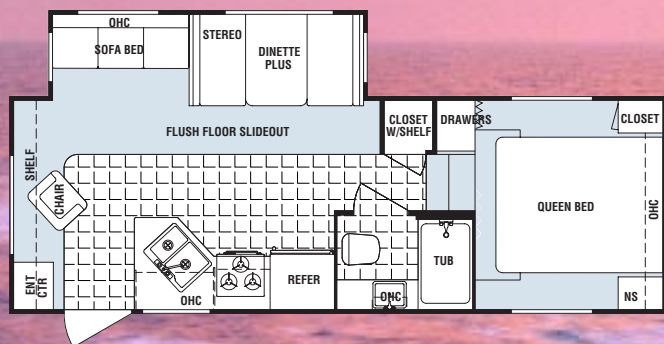
Options
C, G, M, N



2003 CLASSIC MID-PROFILE 5TH WHEEL FLOOR PLANS

24RL-M5

Option F



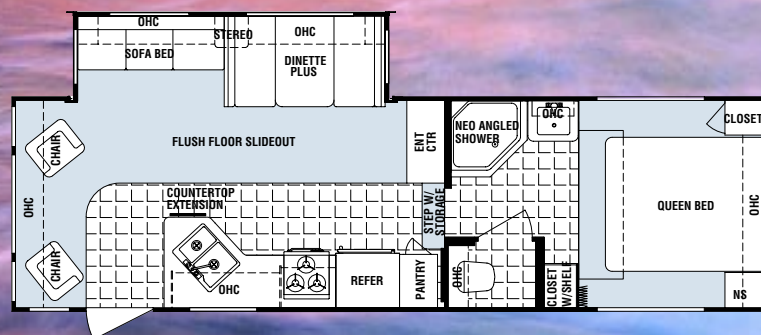
26RK-M5

Option F



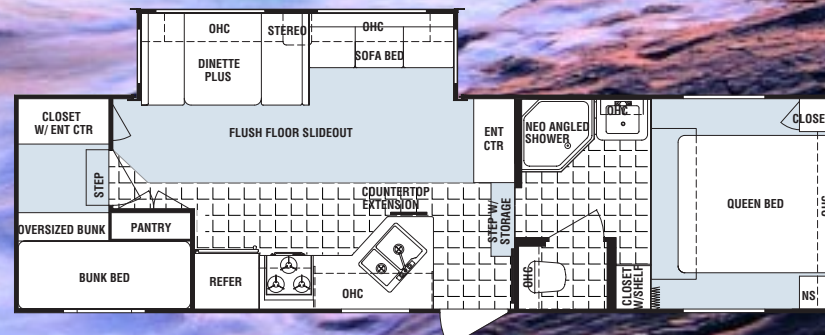
27RL-M5

Option F



28BH-M5

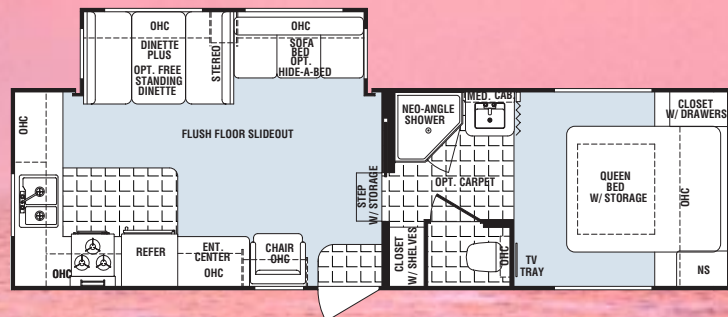
Options F,Y



2003 CLASSIC HIGH-PROFILE 5TH WHEEL FLOOR PLANS

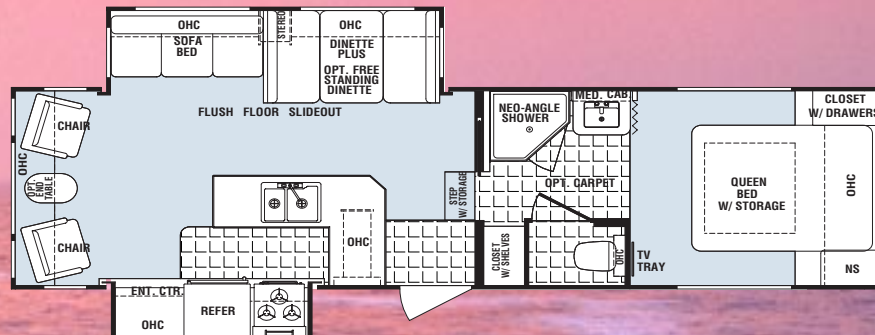
28RK-H5

Options K, R



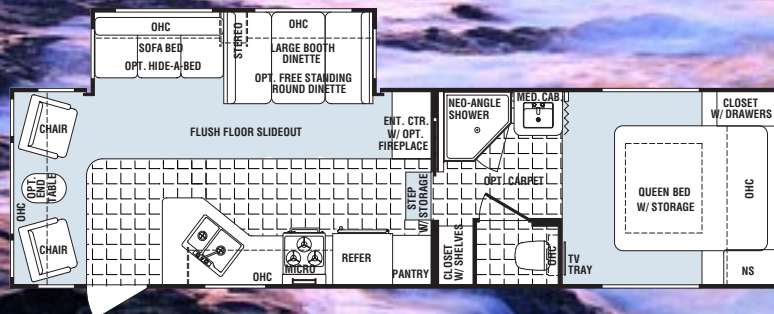
29KS-H5

Options K, R



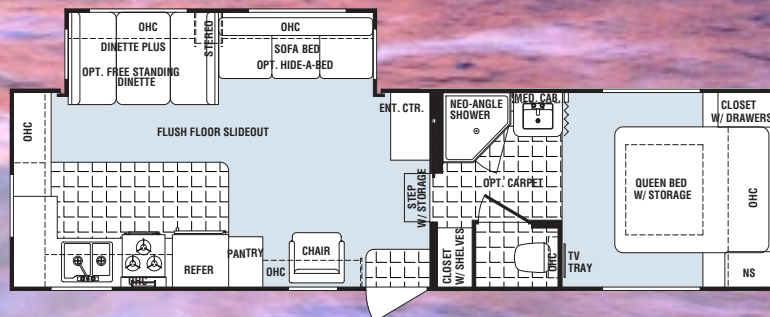
29RL-H5

Options K, R



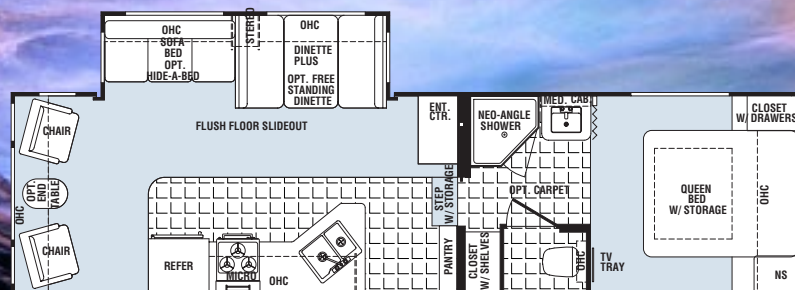
30RK-H5

Options K, R



31RL-H5

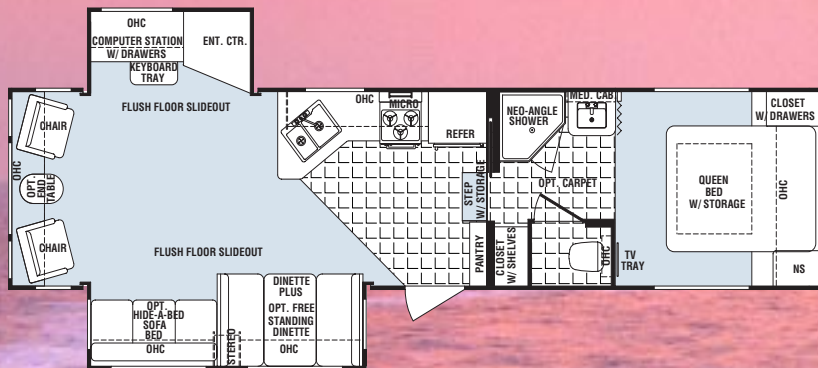
Options K, R



2003 CLASSIC HIGH-PROFILE 5TH WHEEL FLOOR PLANS

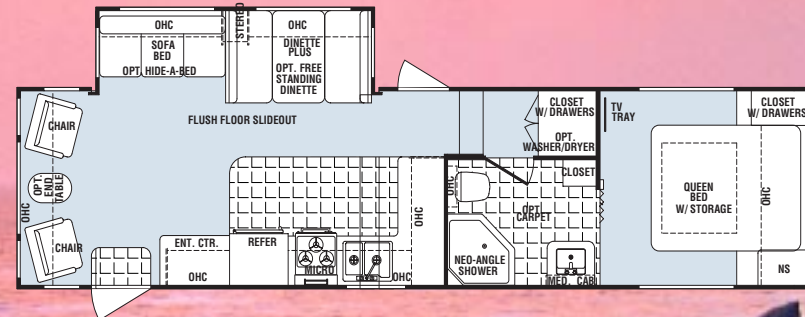
33RL-H5

Options K, R



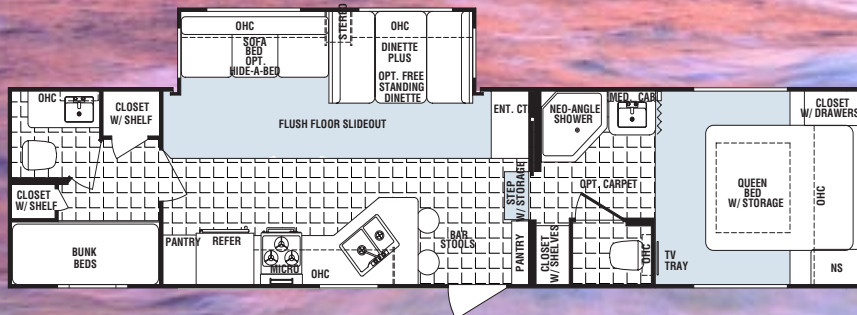
34RL-H5

Options K, R



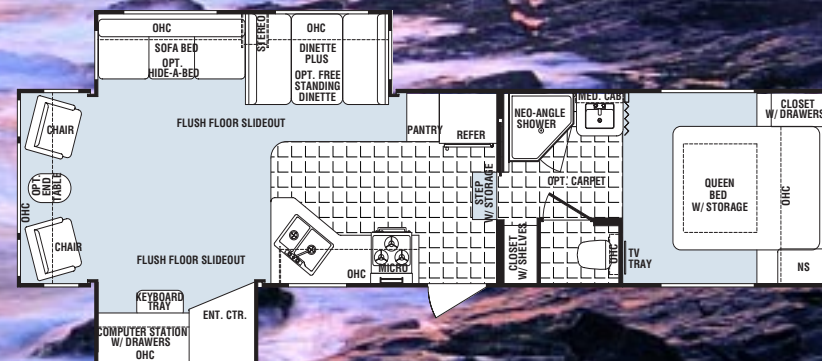
35BH-H5

Options K, R, N, P, B, O, J (N/A Rear Door)



36ESRL-H5

Options K, R, Z



CLASSIC SPECIFICATIONS & WEIGHTS

	TRAVEL TRAILERS												MID-PROFILE FIFTH WHEELS				HIGH-PROFILE FIFTH WHEELS									
Model Number	26FB-DSL	26RL-DSL	27FK-DSL	30RL-DSL	31BH4-DSL	31BH-DSL	31BK-DSL	31FK-DSL	35ES-DSL	36FB-DSL	36FK-DSL	38FB-DSL	38BH-DSL	24RL-M5	26RK-M5	27RL-M5	28BH-M5	28RK-H5	29KS-H5	29RL-H5	30RK-H5	31RL-H5	33RL-H5	34RL-H5	35BH-H5	36ESRL-H5
Length	29' 11"	29' 9"	30' 2"	32' 7"	33' 3"	33'	34' 7"	33' 7"	37' 4"	37' 11"	38'	39' 2"	39' 5"	26' 3"	29' 5"	30' 2"	32' 7"	TBD	TBD	32' 11"	32' 5"	34' 3"	TBD	TBD	36' 5"	35' 5"
Exterior Width	8'	8'	8'	8'	8'	8'	8'	8'	8'	8'	8'	8'	8'	8'	8'	8'	8'	TBD	TBD	8'	8'	8'	TBD	TBD	8'	8'
Exterior Height	10' 11"	10' 10"	10' 10"	11'	10' 11"	11'	11'	10' 11"	11' 2"	10' 11"	10' 11"	11'	10' 10"	11' 5"	11' 10"	11' 10"	12'	TBD	TBD	12' 7"	12' 7"	12' 9"	TBD	TBD	12' 5"	12' 5"
Hitch Dry Weight	684	556	964	796	952	818	1016	1200	976	940	926	1218	1352	878	1148	1402	1360	TBD	TBD	1862	1436	TBD	TBD	TBD	1670	TBD
Gross Vehicle Weight	7684	7556	9764	3539	9752	9618	9816	10000	11136	9740	9726	11378	11512	7878	9948	10202	10160	TBD	TBD	10662	10236	TBD	TBD	TBD	12070	TBD
Unloaded Vehicle Weight	6416	6428	6552	7060	7358	6972	7478	6874	8274	7650	7866	8128	8336	6374	7192	7590	7972	TBD	TBD	8844	7966	TBD	TBD	TBD	9336	TBD
Net Carrying Capacity	1268	1128	3212	2536	3126	2646	2338	3126	2862	2090	1860	3250	3176	1504	2756	2612	2188	TBD	TBD	1818	2270	TBD	TBD	TBD	2734	TBD
Fresh Water Cap. (approx.)	47	47	47	47	47	47	47	47	47	47	47	47	47	47	47	47	47	TBD	TBD	47	47	47	TBD	TBD	47	47
Dual Holding Tanks (approx.)	60	60	90	60	60	60	90	90	90	60	90	60	60	60	90	90	90	TBD	TBD	90	90	90	TBD	TBD	120	90
Tire Size	ST205/75R15C			ST225/75R15D										ST205/75R15C	ST225/75R15D			ST225/75R15D					LT235/85R16E			
Furnace Size BTU's	31	31	30	35	35	30	35	35	35	35	35	35	35	31	31	31	35	TBD	TBD	30	35	35	35	TBD	35	35

■ 2003 SPORT RECREATIONAL VEHICLES (SRV's)



35SRV-FW with Victory Lane package

majestic
peaks



Key locking door to storage area sealed to prevent fumes



Gen prep option

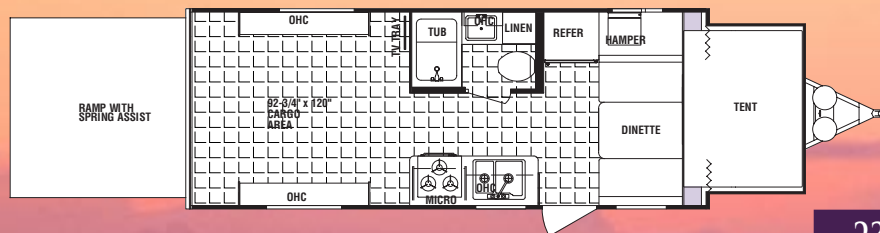
Dutchmen's SRV's feature: Heavy duty tie rings, white laminated cabinets, spring-loaded easy close loading door

Traveling is an adventure. Now you can take your favorite outdoor toys with you on your journey with the 2003 Sport Recreational Vehicle from Dutchmen. Available in both travel trailers and fifth wheels, and with cargo areas up to fourteen feet long, we are sure to have the model that meets your needs. But our SRV's are more than just a garage, that's why our living quarters include the same interior appointments and features found on the rest of the Dutchmen line. Enjoy traveling in a Dutchmen SRV, and remember you *can* take it with you!

2003 SPORT RECREATIONAL VEHICLE FLOOR PLANS

TRAVEL TRAILERS

**22SRVT
SPORT
TRAVEL TRAILER**

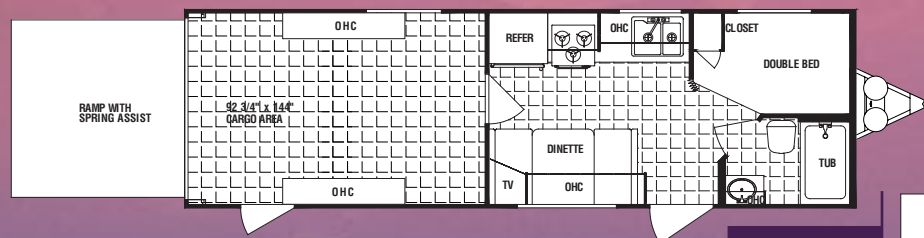


**23SRVT
SPORT
TRAVEL TRAILER**

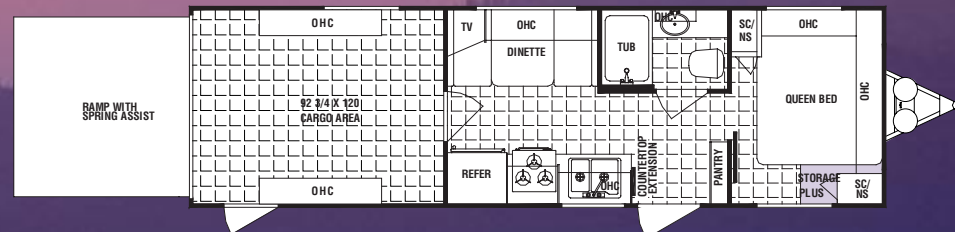


**29SRV
CLASSIC
TRAVEL TRAILER**

Option P

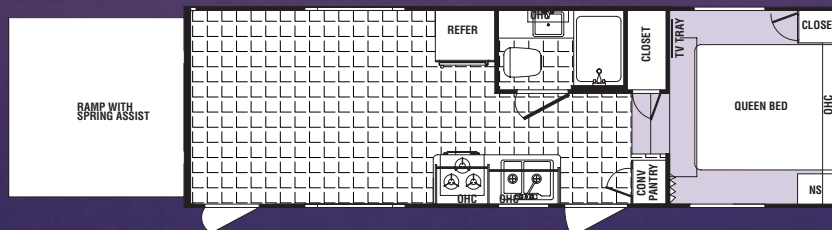


**28SRV
CLASSIC
TRAVEL TRAILER**



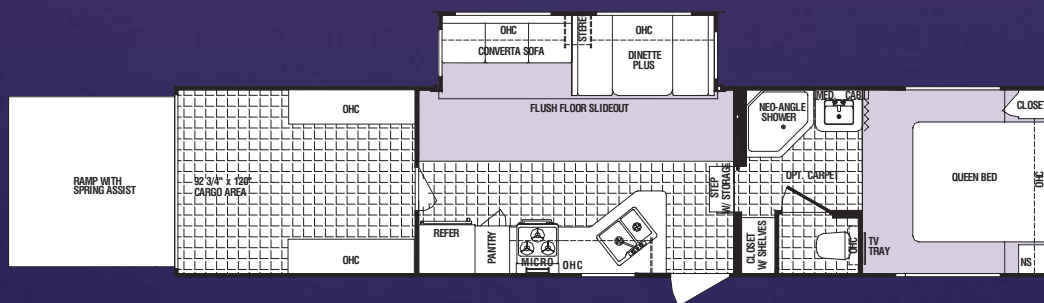
FIFTH WHEELS

**25SRV-M5
5TH WHEEL**



**35SRV-H5
5TH WHEEL
CLASSIC**

Options K, R



Decors and specifications:

22 & 23SRV—see Sports
25, 28, 29 & 35—see Classics

SRV SPECIFICATIONS & WEIGHTS

	SPORT RECREATIONAL VEHICLES				5TH WHL	
Model Number	22SRVT	23SRVT	28SRV	29SRV	25SRV-M5	35SRV-H5
Length	24' 1"	24'	30' 4"	31' 2"	TBD	38' 10"
Exterior Width	8'	8'	8'	8'	TBD	8'
Exterior Height	10'	10' 2"	11' 9"	11' 8"	TBD	12' 8"
Hitch Dry Weight	854	804	TBD	1112	TBD	2098
Gross Vehicle Weight	7854	7804	TBD	11272	TBD	14098
Unloaded Vehicle Weight	4722	4974	TBD	6726	TBD	9782
Net Carrying Capacity	3132	2830	TBD	4546	TBD	4316
Fresh Water Cap. (approx.)	36	40	47	100	TBD	100
Dual Holding Tanks (approx.)	30	60	60	60	TBD	90
Tire Size	ST205/75D15C		ST225/75R15D		TBD	LT235/85R16E
Furnace Size BTU's	20	25	31	31	TBD	31

■ 2003 OPTIONAL DECOR PACKAGES



Help preserve natural wildlife habitats

23SRV with RME décors

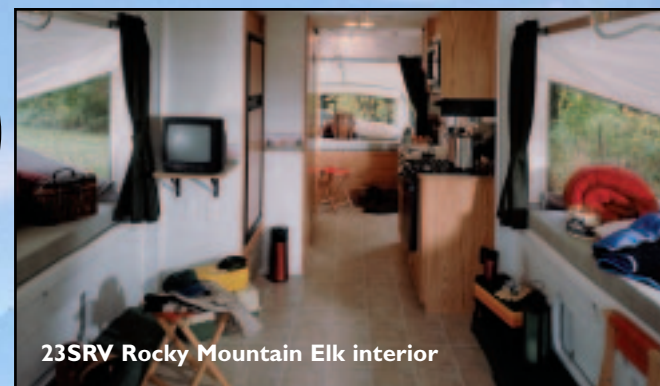


The Rocky Mountain Elk Foundation

is an international wildlife habitat conservation organization with a mission of ensuring the future of elk, other wildlife and their habitat. Now in its 18th year, the Elk Foundation already has conserved or enhanced more than 3.8 million acres—an area 50 percent larger than Yellowstone National Park—of habitat for elk and other wildlife. The organization boasts a record 138,000 members, 115,000 supporters and 10,000 volunteers. Working together in an ambitious 5-year campaign called "Pass It On," the Elk Foundation and its many supporters are on track to conserve an additional 2 million acres by 2005, restore elk to long-empty native ranges, and ensure an elk country legacy for future generations. To learn more, visit www.elkfoundation.org or call 1-800-CALL ELK. Dutchmen makes a donation with every RME purchase—new owners receive a 1 year free membership to the Rocky Mountain Elk Foundation. Available in Lites, Classics, and SRV's.



Rocky Mountain Elk



23SRV Rocky Mountain Elk interior



RV owners love racing, and so does Dutchmen. We are absolutely thrilled to be associated with Richard Childress Racing, one of the elite teams in stock car racing. RCR Racing is the only team in history to earn championships in all three major stock car series.

Dutchmen's association with Richard Childress has inspired the Victory Lane edition. Available in Classic and SRV's, the Victory Lane package is sure to be a winner with the racing fan. Order yours today!

Richard Childress

Victory Lane



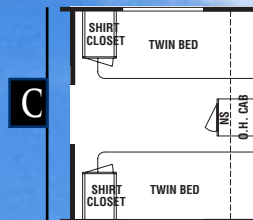
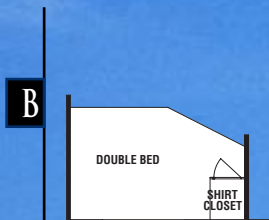
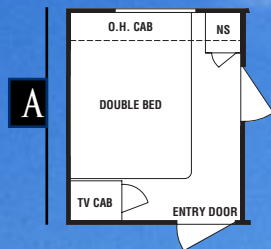
35SRV with Victory Lane interior



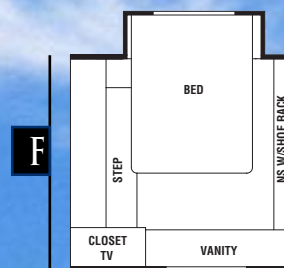
35SRV-H5 with Victory Lane option



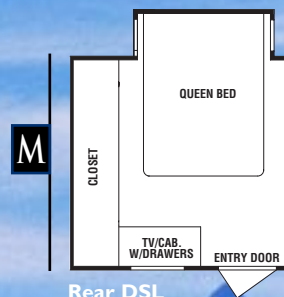
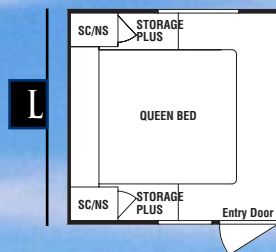
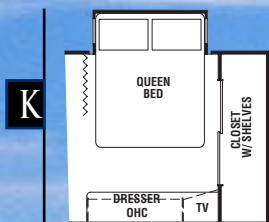
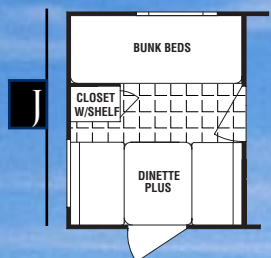
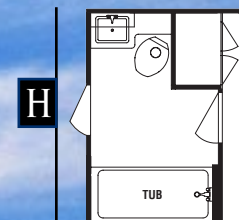
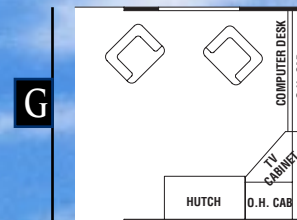
2003 OPTIONAL FLOOR PLANS ■



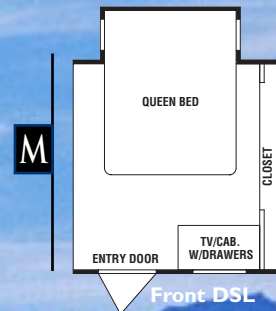
Front or Back DSL



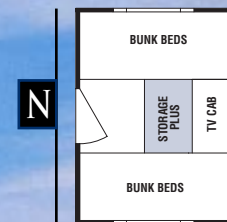
M-5 Walk Thru Bath Only



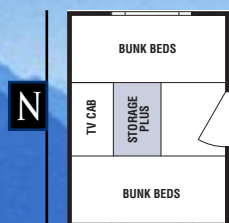
Rear DSL



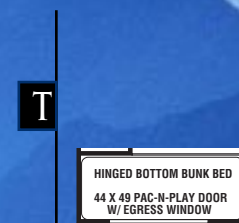
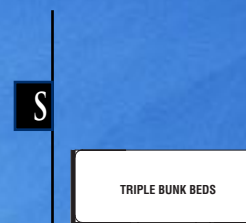
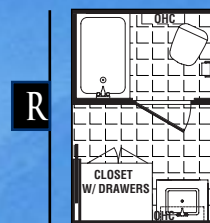
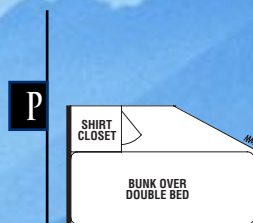
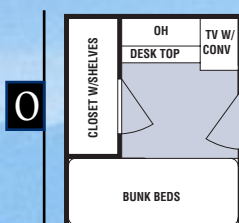
Front DSL



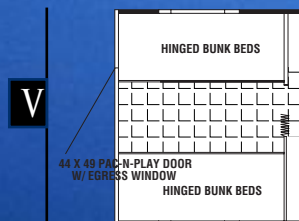
Front



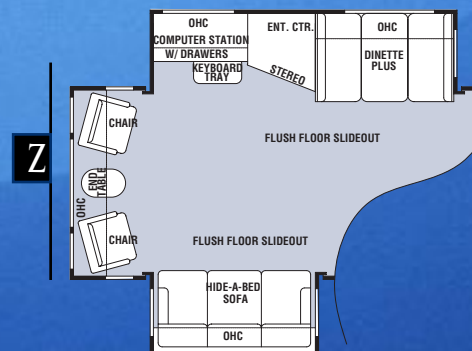
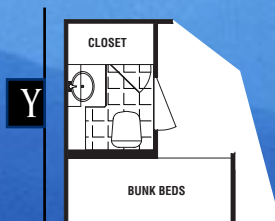
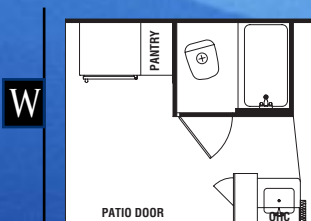
Rear



Pac-N-Play 2



Pac-N-Play 4



■ 2003 STANDARDS & OPTIONS

	Sport	Lite	Classic	SRV
Exterior				
30" radius entry door (most floor plans)		•	•	•*
AL-KO Kober easy lube axles			•	
AL-KO Kober Ultra Lube torsion axles				•
Detachable 30 amp power cord (large slide models only)	•		•	•
Duo pane patio sliding door on 36'-up travel trailers			•	
Extend pin boxes (some models)	•		•	
Flush combo entry latch/dead bolt lock	•	•	•	•
Hitch light		•	•	•*
Locking insulated luggage doors with finger pulls	•	•	•	•
Patio light	•	•	•	•
Pre-wired for digital satellite system	•	•	•	•
Radius exterior "Storage Plus" (where possible)	•	•	•	•
Rain gutter w/corner downspout along the roof line	•	•	•	•
Rear bumper with sewer hose storage	•	•	•	•
Tinted radius clamp ring windows	•	•	•	•
Twin 20# LP bottles with cover	•	•	•	•
Twin 30# LP bottles with cover			•	•*
Construction				
1-1/2" x 2" walls on 16" centers (non DSL Sports)	•	•	•	•
2" belt rail around the perimeter for extra strength	•	•	•	•
2" x 2" walls on 16" centers (Sport DSL models)	•	•	•	•
3/8" wood roof decking full length of the unit - walk on roof	•	•	•	•
5/8" exterior grade tongue & groove plywood floor	•	•	•	•
Fiberglass insulation-R7	•	•	•	•
I-beam cambered chassis	•	•	•	•
Large support outriggers w/solid continuous weld	•	•	•	•
Quad lock slide seal system (models w/slide rooms)	•	•	•	•
1 piece seamless EPDM rubber roof (12 year rubber warranty)	•	•	•	•
Radius 5" truss roof rafters	•	•	•	•
Reinforced studding around all entry doors and windows	•	•	•	•
Double or triple entry steps-welded to frame	•	•	•	•
Tandem axles with 4 wheel electric brakes	•	•	•	•
Track guided electric powered flush floor slide-out system in living room large slide (DSL models)	•		•	•
Manual slide-out system on "SSL" and "SL" models	•	•		
Interior				
12 volt power exhaust roof vent in bath		•	•	•
44" booth dinette plus (large slide models only)	•	•	•	•
Luxurious color coordinated designer interiors	•	•	•	•
ABS tub surround	•	•	•	•
Armstrong tile like linoleum	•	•	•	•
Cargo area tie downs rated at 500 lbs. each				•
Décor globe light over dinette		•	•	•*
Décor pin-up lights in bedroom		•	•	•*
Décor wall border in kitchen	•	•	•	•
Décor coordinated bedspread	•	•	•	•
Décor coordinated headboard	•	•	•	•
2 pillows on queen bed			•	•*

	Sport	Lite	Classic	SRV
Interior (continued)				
Designer valances	•	•	•	•
Double bowl white acrylic sink with high rise faucet	•	•	•	•
Garage area access door				•
Garage storage cabinets-white laminate				•
GFI protected 120 volt duplex receptacle	•	•	•	•
Innerspring mattress	•	•	•	•
Laminated countertops	•	•	•	•
Laundry chute (most models)	•	•	•	•
Living room/bedroom carpet				•
Living room carpet (DSL models)	•		•	•
Bedroom Carpet (5th wheels)	•		•	•
Medicine cabinet with mirror	•	•	•	•
Mini-blinds throughout	•	•	•	•
Quality furniture	•	•	•	•
Raised panel cabinet doors through out	•	•	•	•
Shower curtain (Most models)	•	•		
Sink cover			•	•*
Skylight roof vents (Most models)		•	•	•
Slide-out overhead cabinets with glass doors (living room slide only)			•	•*
Spring assisted rear ramp door				•
Stove cover			•	•
Swivel rocker (not all models)	•	•	•	
Towel bar	•	•	•	•
Wall clock in living room slide-out			•	
Appliances/Equipment				
110 volt residential style refer on travel trailers 36' and up			•	
120 volt duplex receptacles throughout	•	•	•	•
120 volt patio receptacle	•	•	•	•
13.5 BTU ducted air conditioner (22' and up models)		•	•	•
3 burner high-output cooktop	•	•		
3 burner high-output range with oven			•	•*
6 gallon gas water heater	•			
6 gallon quick recovery gas DSI water heater		•	•	•*
A&E patio awning			•	•
AM/FM stereo cassette with CD player and weatherband		•	•	•
Cable TV hook-up	•	•	•	•
Ceiling ducts for A/C (most floor plans)	•	•	•	•
Demand water pump	•	•	•	•
Fire extinguisher	•	•	•	•
Hydro flame forced air, DSI furnace with wall thermostat	•	•	•	•
LPG leak detector	•	•	•	•
Microwave			•	•
Norcold double door gas/electric refrigerator	•		•	•
Norcold single door gas/electric refrigerator		•		
Roof framed for A/C	•			
Pre-wired for stereo	•			
Prepped for Generator (25, 28, 29, 35SRV)				•

* Not available on 22 and 23 SRV's

2003 STANDARDS & OPTIONS

	Sport	Lite	Classic	SRV
Appliances/Equipment (continued)				
Prepped for optional exterior Vitco Grill	•	•	•	•
Pre-wired for TV antenna	•	•	•	•
Range hood with 12 volt light and exhaust fan	•	•	•	•
Residential patio door 36' and up			•	
Smoke detector	•	•	•	•
Solid state converter with built in battery charger	•	•	•	•
Thetford toilet	•	•	•	•
TV antenna with power booster	•	•	•	•
Wall mounted systems monitor panel	•	•	•	•
Water heater bypass	•	•	•	•
Options (Not all options available on all floorplans)				
Laminate Package includes: • Laminated aluminum framed walls • Front lower ABS cap on travel trailers • Full front fiberglass cap on high profile 5th wheels • Front upper ABS cap on mid-profile 5th wheels			•	•
Comfort Package includes: • 13.5 BTU A/C • A&E Awning • 30# LP bottles • AM/FM stereo w/CD player & weatherband • TV antenna • Stove cover • 3 burner range w/oven • Microwave	•			
Deluxe Package includes: • 13.5 BTU A/C • Microwave • 30# LP bottles • A&E Awning		•		
12 volt ultra heat pads - all tanks (N/A 22' and 23' SRV's)			•	•*
13.5 BTU air conditioner (ducted on 22' and above)	•	•		
15,000 BTU A/C			•	•*
3 burner range with oven replacing 3 burner cooktop	•	•		
30# LP bottles with cover	•	•		
50 amp service laminates package only (H5's only)			•	•*
6 gal. gas/electric water heater w/DSI	•	•	•	•
10 gal. gas/electric water heater w/DSI			•	•*
Additional rear sofa w/rear lounge option				•
Aluminum rims			•	•*
Bedroom carpet and pad (non 5th wheels)	•	•		
Bedroom slide out (see floor plan options)			•	
Bi-fold shower door		•	•	•*
Ceiling fan (high-profile 5th wheels)			•	•*
Coffeetable			•	
Day/night shades			•	•*
Diamond plate front lower rock guard on travel trailers		•	•	
Double door refer		•		

	Sport	Lite	Classic	SRV
Options (continued)				
Electric front jacks - fifth wheels	•		•	•
Electric sofa slide on "SSL" and "SL" models		•		
Enclosed insulated underbelly (Available with Fiberglass Package only)			•	
Entry assist handle		•	•	•*
Exterior Vitco grill	•	•	•	•
Extra large 8 cu. ft. refer			•	•*
Fantastic fan in cargo or living areas w/rain sensor			•	•*
Free standing dinette with 4 chairs (large slide models)	•		•	•*
Front fiberglass cap on fifth wheels - High profile models			•	•
Front lower ABS cap on M5 fifth wheels			•	
Front lower ABS rock guard on travel trailers with aluminum exterior walls		•	•	•*
Front or rear stabilizer jacks	•	•	•	•
Garage floor diamond plate (not all models)				•
Generator installed (H5 fifth wheels only) (28' & up SRV's)			•	•
Generator prep (H5 fifth wheels only)			•	•
Hide-a-bed sofa (large slide models only)	•		•	•
Norcold double door gas/electric refrigerator—8 cu. ft. (36' & up)			•	
Living room border		•	•	•*
Living room carpet and pad (non DSL)	•	•		
Phone jack			•	•*
Poly-Air roof insulation - adds R-7			•	•*
Power tongue front jack (travel trailers)			•	•
Ramp door diamond plate				•
Rear entry door w/triple steps (N/A 22' and 23' SRV's)				•
Rear garage windows				•
Rear ladder		•	•	•
Rear screen room/awning				•
Rear screen door				•
Recliner			•	
Reese 16k fifth wheel hitch			•	•*
Safety glass	•	•	•	•
Scare lights			•	•
Sink covers		•		
Skylight in tub area	•	•	•	•
Slide out overhead cabinets		•		
Slide tray for Storage Plus	•	•	•	
Solid oak cabinet doors throughout (N/A 22' and 23' SRV's)		•	•	•
Solid oak raised panel cabinet doors in slide			•	
Solid oak slide fascia			•	
Solid oak raised refer front		•	•	•
Spare tire kit with carrier	•	•	•	•
Spray away exterior shower	•	•	•	•
Stove Cover		•		
Washer dryer prep (with Fiberglass Package only) (H5's only)			•	•*
Water filter with spout		•	•	•*
Fiberglass Package**			•	•

* Not available on 22 and 23 SRV's



DARE TO COMPARE VALUE CHECK LIST

Before you make your purchase decision, compare Dutchmen's features to the competition. We are sure you will agree that Dutchmen is the best trailer for the best price in the industry.

DUTCHMEN COMPETITION

Construction Features

2 Year bumper to hitch warranty - The best in the industry!	✓
1 year Customer Care roadside assistance program included with purchase	✓
Sidewalls with 16" on-center studding with reinforcing belt rail	✓
Heavy Duty Mesa aluminum siding - 25% thicker than industry standard	✓
Large "Storage-Plus" pass thru storage compartments (most models)	✓
Radius clamp ring tinted windows - many windows are oversized	✓
Oversize 30" wide entry door - radius corners Lites and Classics	✓
All openings sealed with butyl rubber sealant and with a second layer of silicone sealant	✓
Color coordinated A&E awning - custom fit for maximum size	✓
High intensity hitch light with switch (Lites and Classics)	✓
Corrosion resistant LP bottle cover (trailers)	✓
1 beam cambered steel frame w/integrated bumper	✓
2" x 3" floor framing 16' centers	✓
Ducted floor heat - no ducts in cabinets - allows for extra storage	✓
Poly-propylene underbelly provides a seamless vapor barrier to protect underside of trailer	✓
5/8" exterior grade tongue and groove plywood flooring	✓
12 volt electric slide room mechanism with heavy duty worm gear rack and pinion drive mechanism - (DSL models)	✓
Double or triple entry steps welded to frame w/low first step	✓
Fresh and waste water tanks mounted below floor - allows for extra interior storage	✓
3/8" Weyerhaeuser structure-wood walk-on truss-style roof	✓
EPDM rubber roof with 12 year material warranty	✓
Roof ducting for A/C (22' and up)	✓

DUTCHMEN COMPETITION

Interior Features

Raised panel cabinet doors - standard	✓
Tile-like premium linoleum flooring	✓
Metal mini blinds - standard	✓
13,500 BTU Duo-Therm A/C by Dometic w/quick cool feature - (std. Classics, opt. Lites & Sports)	✓
Innerspring mattress - (standard)	✓
6 gal. gas/DSI quick heat water heater (std. Lites & Classics, opt. Sports)	✓
Wineguard TV antenna with reception power booster - (std. Lites & Classics, opt. Sports)	✓
Water heater by-pass for winterization	✓
55 amp power converter	✓
Cable TV jack - standard	✓
Prewired for DSL satellite system	✓
Gas support struts on beds for access to extra storage - (Lites & Classics only)	✓
TV shelf and outlet in bedroom - (Lites & Classics only)	✓
Power roof vent/skylight in bath - (Lites & Classics only)	✓
One piece tub/shower surround	✓
Extra large wood framed medicine cabinet	✓
Large 1.0 cu. foot residential microwave oven - (std. Classics, opt. Lites & Sports)	✓
3 burner range w/center quick heat high output burner & oven - (std. Classics, opt. Lites & Sports)	✓
Residential style extra large dual bowl kitchen sink	✓
Laundry chute - (most models)	✓
Hinged dinette seats with access to extra storage	✓
Reversible vinyl-lined oversized dinette cushions	✓
Entry assist handle interior and exterior	✓

Features subject to change without notice—some features not available on all models.

2003 DUTCHMEN CONSTRUCTION ■

SIDEWALLS—Residential home style construction

- 1 Fiberglass R-7 insulation - cut & fitted for full expansion
- 2 2" x 2" on 16" centers with an extra 2" belt rail around the perimeter for extra strength - 1-1/2" x 2" Lites & Non-DSL Sports
- 3 Galvanized steel straps around entire construction perimeter - tying floor to sidewall to ceiling
- 4 Double or triple studding around all doors and windows

ROOF—Ducted for A/C 22' models & up

- 5 Large 5" truss rafters with 3" grade for better water run off
- 6 Fiberglass R-7 insulation - cut and fitted
- 7 3/8" structurewood roof decking full length of the coach (25 year material warranty)
- 8 Dicor Corp. Brite-ply seamless EPDM roof covering w/fire retardent backing and 12-year warranty

FLOOR

- 9 I-beam frame cambered to add constructional integrity
- 10 Large support outriggers w/solid continuous weld
- 11 PolyFlex underbelly wrapped around the floor for extra water protection
- 12 2" x 3" studs running lengthwise to allow for heat duct installation
- 13 Fiberglass R-7 insulation - cut & fitted
- 14 5/8" exterior grade tongue-&-groove plywood floor
- 15 Armstrong tile like linoleum and/or stain resistant carpet
- 16 Sidewalls are placed on top of the floor for added strength

EXTERIOR

- 17 Extra large tinted, radius, jalousie clamp ring windows that are sealed with butyl rubber and top coated with silicone for one of the best watertight seals in the industry
- 18 30" radius entry door on most floor plans - Square corner doors / Sport models
- 19 Exterior oversized storage "Storage Plus" wherever possible
- 20 Ultra lube axles - most models N/A Sports (non-slide models) and Lites
- 21 S-lock aluminum siding - .024
- 22 Bottom exterior aluminum attached with screws thru the side - water cannot be trapped, no staples to penetrate wood, or rust and fall out
- 23 Rear bumper w/hidden sewer hose compartment
- 24 Top quality - easy to use double or triple steps welded to frame





JUST SHOW YOUR CARD AND GO!

We build our products better and we protect you with the industry's best warranty coverage, but we know that sometimes things can go wrong on the road. So when you become the proud owner of a new Dutchmen, it's just the beginning of our exclusive 'round-the-clock Customer Care Program.

Customer Care provides complete and fully paid roadside assistance, emergency road service, and special warranty support benefits that go with you wherever you travel. You get immediate access to fast, dependable service when and where you need it.

Add our toll-free warranty and service appointment assistance and a technical assistance hot line and you have the security and peace of mind of full-time support.

Our exclusive 24-hour Customer Care benefits include:

- Fully paid emergency roadside assistance
- Toll-free service appointment scheduling nationwide
- Free on-site mechanical service in the event of a breakdown
- Warranty service assistance at over 6,800 qualified service agencies
- Free jump starts
- Free customer trip routing and map service
- 24-hour technical hot line
- Free fuel delivery
- Free lock-out service

At Dutchmen we want you to be able to enjoy your new trailer or fifth wheel to the fullest. That's why we've provided Dutchmen Customer Care to take care of the problems that could spoil your travels.

Why a Thor Product Is Your Best RV Value:

Thor Industries, Inc., listed on the New York Stock Exchange, proudly traces its history back over seventy years to the pioneering days of the RV industry with the founding of Airstream, the industry's oldest and most renowned brand. Our total commitment to quality and our philosophy of putting our customers first has led to our continuous growth. Today, Thor is the largest builder of RVs. Thor's strong financial condition and years of solid growth are your assurance that we will be here to serve you for years to come. We think this extra peace of mind is important when you are making a significant investment. Because our customers are always #1 with us, we work harder than other manufacturers to satisfy you.

THE INDUSTRY'S BEST WARRANTY—BY FAR!

We're so confident in the design and construction of our products that they are covered by Thor's exclusive Full 2-Year Standard Warranty: "Hitch-to-bumper" coverage to protect your RV investment.

Your Full 2-Year Warranty Includes: *

- Refrigerator
- Slide-out Mechanisms
- LP tanks
- Furnace
- Power converter
- Water heater
- Range
- Plumbing
- TV antenna
- Microwave
- Electrical
- Lavatory
- Water pump
- Doors
- Awnings
- House stereo
- And much more...

*See individual company warranty statements for details.

Product information, specifications, and photography in this brochure were as accurate as possible at time of printing. Photographs may contain some features that are optional on your vehicle. Since we continually strive to improve our products, actual products may differ. Prices and specifications are subject to change without notice. All capacities are approximate and dimensions are nominal. Some features shown are optional and may be different or unavailable in Canada. Vehicles are designed for recreational use only and not intended for use as a primary residence.



305 Steury Ave. • Goshen, IN 46528
574.534.1224 • Fax 574.533.3807
Service, Warranty and Parts 574.537.0700
www.dutchmen-rv.com

Your Local Dealer



This brochure is printed on recycled paper as part of Thor's corporate effort to minimize waste and conserve our natural resources. Providing safe, fuel-efficient recreational vehicles is Thor's way of further demonstrating our role as the industry leader in safeguarding our nation's environment.

Dutchmen invites you to check out the following companies to further enhance your RV experience:



rvaa.com



funroads.com



reeseprod.com



rbwindustries.com



trailair.com