

ULTRASPORT 2002

Damon[®]
Value by Design



MOVING UP, HEADING OUT, HAVING FUN.
IT'S ALL WITHIN YOUR POWER.

That diesel motorhome you've been dreaming about? You know: the one you can actually afford? It's here — in the 2002 Ultrasport™. And it's no diesel upgrade, either.

Damon builds the Ultrasport as a real diesel motorhome from the ground up. That means you don't have to settle for any of the compromises necessary to turn a gas-powered coach into a diesel. It also means Damon can cut manufacturing costs, build in more luxuries and still pass savings on to you. Considerable savings.

The result is, you get more of the power you've longed for: diesel power to provide exceptional road performance ... the power to stretch your travel dollars farther ... and the power to get more out of RV living.

- Ultrasport's power comes not only from its diesel engine, but also from its 6-speed Allison® transmission, full air brakes with antilock technology, air-ride suspension and Jacobs® exhaust brake.
- A custom-designed front entrance door makes it easier to get into and out of the coach than a conventional cab door.
- In the cab, you'll find a comfortable 6-way-powered, reclining ultra-leather driver's chair and an ultra-leather reclining passenger seat.
- An electric rear-view monitor system helps you back up safely and easily.
- Ducted defrosters quickly clear the windshield of condensation or ice — and keep it clear.
- Optional electric sun visors let you adjust for glare easily.
- The cab overhead includes a top-flight entertainment system with a VCR and a 25" color TV.
- A space-adding slideout with flush-floor extension gives you more freedom to move about, stretch out and relax inside.



Model 3876 • Biltmore Interior • Maple ▶





Model 3679
Astoria Interior • Oak ▶



Model 3679 • Astoria Interior • Oak ▲

- A unique StepSaver™ kitchen puts everything well within reach to make meal preparation quick and easy. You'll especially like the standard full pantry (which is not available if you elect to purchase the optional side-by-side refrigerator).
- Ultrasport's kitchen and bathroom feature beautiful solid-surface countertops with stylish integrated sinks.
- Fabric-lined overhead cabinets reduce interior noise during travel.
- Choose between optional hardwood plank flooring or ceramic tile flooring in the kitchen and bath areas. Either package provides both beauty and functionality.
- Ultrasport gives you an incredible amount of storage space — including a massive pass-through basement storage compartment.
- If it's uncommon comfort you're after, you'll want to option the extra-wide, ultra-leather J-lounger.
- For the best in entertainment, Ultrasport has an exceptional Pioneer® audio system with four speakers and a subwoofer. An optional 12-disc changer is available.
- An optional 400-watt inverter helps power your stereo equipment.
- In the bathroom, you have the convenience of a taller, residential-style toilet.
- Now, whenever you pull into a campsite, you can have hot water on tap immediately with an optional MotorAid® 10-gallon gas/electric water heater. It actually uses Ultrasport's engine to heat water while you drive.
- You'll take comfort in knowing your 2002 Ultrasport has passed a strenuous 400-point inspection test as part of Damon's StartRight Quality Assurance® program.
- Ultrasport also gives you the benefits of Damon's exclusive Total Quality Service™ (TQS) initiative. Ask your dealer for details.

◀ Model 3876 • Biltmore Interior • Maple

The power to go where you want when you want. And to travel freely, without hassles. That's a big part of a motorhome's appeal. And nobody gives you the power like Damon. You'll feel it the moment you turn the key on one of our exceptional diesel engines. Ultrasport lets you choose between a 300-hp Cummins® ISB diesel engine, which is standard ... or an optional 300-hp Caterpillar® diesel engine. Either way, you'll have all the power you need to traverse the roughest, steepest, most challenging terrain. Note too that, unlike some other motorhome manufacturers who hobble together their own homemade chassis, we offer the solid dependability of genuine, brand-name, factory-built chassis. Truly, Ultrasport diesel delivers!



To keep your RV experience running smoothly and efficiently, whatever you expect from it, Damon gives you a choice of two top-performance generators: a 6.3-kW Onan® LP, standard ... or an optional 7.5-kW Onan® diesel. Six-volt Thermoil® auxiliary batteries are also provided, as is a 75-amp converter. The option of a 400-watt inverter is also available to help boost power to the coach.



Ultrasport's seamless, one-piece EPDM rubber roof is so resistant to sun damage and the elements that it comes with a full 12-year warranty. It also provides excellent thermal and acoustical insulation. Radius corners, along with the roof's crown, allow proper water runoff.

An optional heat pump gives you greater comfort control in milder climates.

The aluminum-frame crowned roof features beaded block-foam insulation and a residential-styled ceiling.

Ultrasport is satellite- and cable-TV-ready to increase your entertainment options.

Centrally ducted air ensures consistent climate throughout the coach (with a standard 13,500-BTU air conditioner).

Enjoy separate front door and patio awnings — with the option of electric remote-control operation.

Hadley® air horns are "the sound of safety."

A large windshield and pantographic dual-arm wipers provide an extra measure of assurance.

Walls and openings are aluminum-framed. Walls are also vacuum-bonded with beaded block-foam insulation.

Optional paint packages increase exterior visual appeal.

ChromaFlair® ColorShift™ iridescent striping adds a touch of excitement. It changes color, depending on the angle at which you view it.

Powder-coated, white-framed, radius-corner windows help eliminate those annoying black streaks that run down the sides of RVs from weathered black window frames.

Ultrasport has a steel firewall and a steel-truss basement structure system; an insulated floor system with structurewood and beaded block-foam insulation; and a heated tank area with insulated doors.



Uniquely Ultrasport™



Don't "Bar-B-Q" — "RVQ" with Damon's optional outdoor barbecue grill! It attaches easily to a pre-installed exterior sidewall rail and a gas line. There's no messing with propane tanks. And the grill stows in its own zippered bag.



Ultrasport comes with an ultra-convenient kitchen pantry featuring an easily accessible slideout rack.

An optional ceramic tile floor or a hardwood plank floor is available in the kitchen and bath.



Top-flight entertainment is provided by a standard Pioneer® AM/FM/CD player with four speakers and a sub-woofer. A 12-disc CD changer is also available.

Two-tone ultra-leather seating lends an air of sophistication to the Ultrasport interior.



A huge pass-through basement storage compartment lets you load up more of your favorite vacation gear.

The residential-style toilet is taller, more accommodating.

Beauty, Brawn and Benefits Galore

Advanced engineering. Computer-aided design. Innovative manufacturing technologies. And feedback from RVers just like you. All this has gone into the making of a 2002 Ultrasport Diesel Motorhome. You can see the difference it makes. No other motorhome in Ultrasport's class offers so impressive a range of features.

Ultrasport™ Gives You Choices That Make The RV Life Fit Your Life.



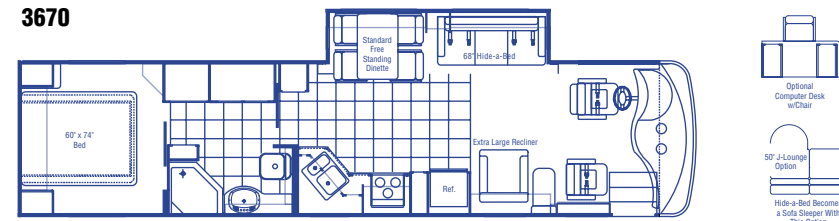
Gold Rush



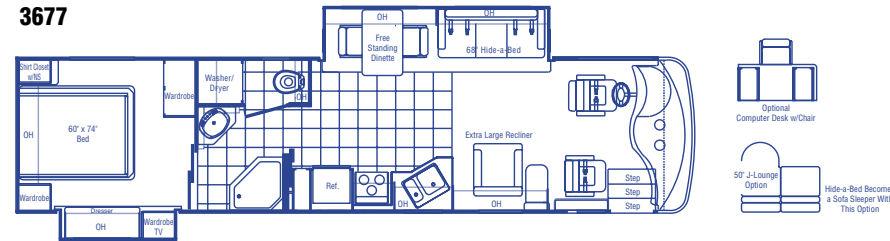
Grey Mist



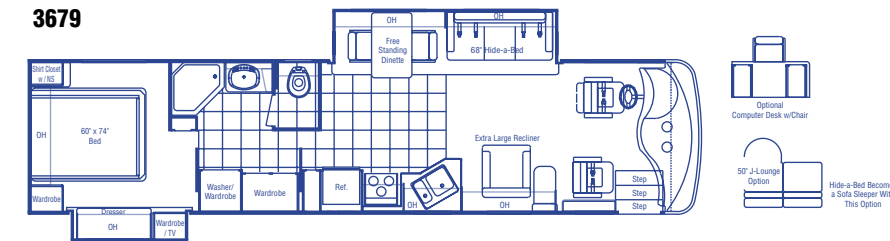
Icy Green



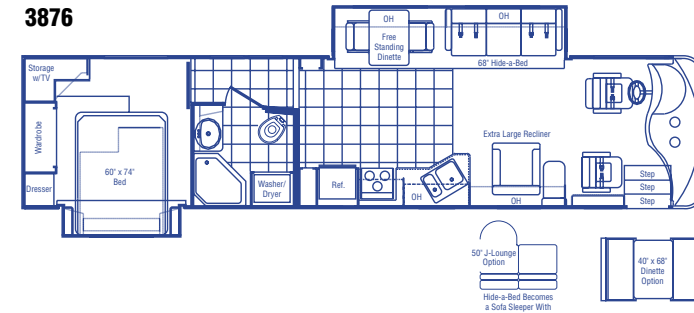
3670
Slideout living area • Freestanding dinette • Neo-angle shower • Washer/dryer hookup



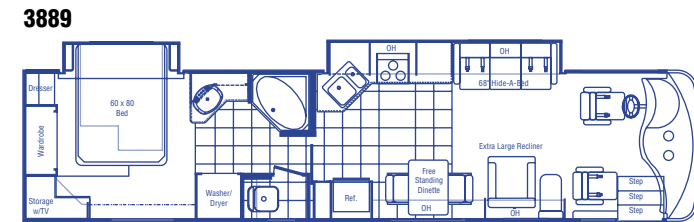
3677
Slideout living area • Freestanding dinette • Neo-angle shower • Washer/dryer hookup



3679
Slideout living area • Freestanding dinette • Neo-angle shower • Washer/dryer hookup



3876
Slideout living area • Freestanding dinette • Neo-angle shower • Washer/dryer hookup



3889
Slideout living area • Freestanding dinette • Neo-angle shower • Washer/dryer hookup

Décor ...

Damon's interior designers and engineers have created a choice of environments that not only help you feel right at home, but also lend a sense of personality to your Ultrasport. Fabric selections, trimwork, countertops, flooring and window treatments are carefully coordinated to provide a customized look — one that's fashionable, yet timeless; exciting, yet tasteful.

Floor Plans ...

Notions about what the RV life should entail are unique to every RVer. That's why Damon offers the 2002 Ultrasport in a variety of floor plans, with a number of useful options. Regardless of which floor plan you choose, you can be sure it's thoughtfully laid out to provide the roomiest, most comfortable, most convenient mobile living experience you've ever had.

Paint ...

Thanks to its clean, bold paint stylings, Ultrasport's exterior has a remarkably fluid, energized look befitting its diesel-power performance. Choose the color package that best suites your taste. It's sure to turn heads and win favorable reviews wherever you go.



Light Oak



Maple (optional)



Astoria



Biltmore



Hamptons



Rockefeller

Ultrasport Exterior	3670	3677	3679	3876	3889
Paint package	O	O	O	O	O
Fog lights	S	S	S	S	S
Driving lights	S	S	S	S	S
Wide-body design	S	S	S	S	S
Radius-corner domed roof	S	S	S	S	S
Rubber roof	S	S	S	S	S
Roof vents	S	S	S	S	S
Rear ladder	O	O	O	O	O
Aerodynamic front and rear fiberglass caps	S	S	S	S	S
Contoured front and rear integrated bumpers	S	S	S	S	S
Awning rail	S	S	S	S	S
Side-mounted manual patio awning*	O	O	O	O	O
Side-mounted manual front door awning*	O	O	O	O	O
Side-mounted awning over slideout*	S	S	S	S	S
Carefree® electric patio awning*	O	O	O	O	O
Carefree® manual front door awning*	O	O	O	O	O
Remote control for Carefree® electric patio awning	O	O	O	O	O
Entry-assist lighted grab handle	S	S	S	S	S
Upgraded gelcoat wall	S	S	S	S	S
Deluxe graphics package	S	S	S	S	S
Locking exterior storage doors	S	S	S	S	S
Custom-designed front entry door with screen	S	S	S	S	S
White-framed radius-cornered windows	S	S	S	S	S
Dual-pane windows	O	O	O	O	O
2 porch lights (one each side)	S	S	S	S	S
Easy-to-clean, lighted, rotocast storage compartments	S	S	S	S	S
Full basement, pass-through storage	S	S	S	S	S
Gas pistons on exterior storage doors	S	S	S	S	S
Sewer hose storage	S	S	S	S	S
RVQ grill	O	O	O	O	O

*Awnings not available on wide body models in some locations. Check local regulations for applicable laws.

Ultrasport Living Area	3670	3677	3679	3876	3889
Extra-large cloth recliner with footrest	S	S	S	S	S
Extra-large ultra-leather recliner with footrest	O	O	O	O	O
Lounge table	S	S	S	S	S
J-lounger, ultra-leather (replaces recliner and lounge table, N/A with hide-a-bed)	O	O	O	O	O
Sofa bed, cloth (replaces hide-a-bed in 3670, 3677, 3679, 3876)	O	O	O	O	S
Sofa bed, ultra-leather (replaces hide-a-bed in 3670, 3677, 3679, 3876)	O	O	O	O	O
Hide-a-bed, cloth (N/A with J-lounger)	S	S	S	S	N/A
Hide-a-bed, ultra-leather (N/A with J-lounger)	O	O	O	O	N/A
Day/night shades	S	S	S	S	S
100% nylon carpeting with stain treatment and padding	S	S	S	S	S
25" color TV with full-function remote in cockpit overhead with antenna, booster and jack	S	S	S	S	S
Video package (VCR and control center)	S	S	S	S	S
Decorator clock and mirror	S	S	S	S	S
Fabric ceiling	S	S	S	S	S
Living room pin-up lights	S	S	S	S	S
Aisle lights	S	S	S	S	S
Lined overhead cabinets throughout	S	S	S	S	S

S = Standard O = Optional N/A = Not available IPO = In place of

Ultrasport Bedroom	3670	3677	3679	3876	3889
Pillow-top mattress	S	S	S	S	S
Bedsprad with throw pillows	S	S	S	S	S
Diamond-beveled mirror with designer headboard	S	S	S	S	S
Lined wardrobe with mirrored doors	S	S	S	S	S
Wardrobe lights	S	S	S	S	S
TV area and jack	S	S	S	S	S
13" color TV	O	O	O	N/A	N/A
19" color TV	N/A	N/A	N/A	O	O
Jalousie windows	S	S	S	S	S
Lambrequin window treatments	S	S	S	S	S
Day/night shades	S	S	S	S	S
Pin-up lights	S	S	S	S	S
AM/FM stereo/cassette player	O	O	O	O	O

Ultrasport Kitchen	3670	3677	3679	3876	3889
Refrigerator: large flush-mounted, double-door	S	S	S	S	S
Refrigerator: large flush-mounted, double-door with icemaker	O	O	O	O	O
Refrigerator: side-by-side with icemaker	O	O	O	O	O
IPO standard refrigerator and pantry	O	O	O	O	O
Refrigerator: solid wood front (oak or maple)	S	S	S	S	S
3-burner range and oven	S	S	S	S	S
Cooktop IPO range and oven	O	O	O	O	O
Folding range cover with solid-surface accents	S	S	S	S	S
Mirrored backsplash behind stove	S	N/A	N/A	N/A	N/A
Microwave oven	S	S	S	S	S
Microwave/convection oven	O	O	O	O	O
Lighted power range hood and monitor panel with LPG readout	S	S	S	S	S
Double-bowl sink with oversized dish bowl	S	S	S	S	S
Two solid-surface sink covers	S	S	S	S	S
Single lever faucet with sprayer	S	S	S	S	S
Pantry	S	S	S	S	S
Solid-surface countertops	S	S	S	S	S
Solid wood cabinet doors throughout (oak or maple)	S	S	S	S	S
Brass-style cabinet hardware	S	S	S	S	S
12" x 12" vinyl tile flooring	S	S	S	S	S
Wood plank flooring kitchen and bath (oak or maple)	O	O	O	O	O
Ceramic tile flooring kitchen and bath	O	O	O	O	O
Booth dinette with padded top, deep storage drawers and solid-surface edge table	O	O	O	O	O
Freestanding dinette with 2 chairs	S	S	S	S	S
2 folding chairs (available with freestanding dinette only)	O	O	O	O	O
Mini blind	S	S	S	S	S
Fantastic® power vent	O	O	O	O	O
Wallpaper border	S	S	S	S	S
Fire extinguisher	S	S	S	S	S

Ultrasport Bathroom	3670	3677	3679	3876	3889
Full-height fiberglass tub or shower with door	S	S	S	S	S
Skylight in shower	S	S	S	S	S
Obscure glass window in private stool area	N/A	S	S	N/A	S
Power vent	S	S	S	S	S
Foot-flush porcelain toilet with sprayer	S	S	S	S	S
Medicine cabinet with solid wood door and mirror	S	S	S	S	S
Wallpaper border	S	S	S	S	S

Ultrasport Chassis	3670	3677	3679	3876	3889
300-hp Cummins® ISB	S	S	S	S	S
300-hp Caterpillar® engine	O	O	O	O	O
In-block engine heater	S	S	S	S	S
Leece Neville® 160-amp, 12-volt alternator	S	S	S	S	S
Allison® MH-3000 automatic transmission – 6 speed	S	S	S	S	S
Exhaust brake	S	S	S	S	S
Full air brakes with auto slack adjusters front and rear	S	S	S	S	S
Midland® Pure-Air Plus™ heated air dryer	S	S	S	S	S
Air-ride suspension	S	S	S	S	S
Bilstein® shock absorbers, front and rear	S	S	S	S	S
22.5" radial tires	S	S	S	S	S
Leveling jacks	S	S	S	S	S
Stainless-steel wheel liners	S	S	S	S	S
Front and rear mud flaps	S	S	S	S	S
Trailer hitch (5,000 lbs.)	S	S	S	S	S
Emergency start circuit	S	S	S	S	S
Under-hood light	S	S	S	S	S
Layer of neoprene vibration dampener	S	S	S	S	S

Ultrasport Utilities	3670	3677	3679	3876	3889
Air conditioner: 13,500-BTU ducted center front and rear	S	S	S	S	S
Heat pumps (2) with 15,000-BTU A/C and 12,700-BTU heat	O	O	O	O	O
5-watt chassis solar battery charger (N/A with low profile A/C or heat pump)	O	O	O	O	O
Furnace: 35,000-BTU electronic ignition floor-ducted	S	S	S	S	S
Water heater: MotorAid® 10-gallon gas/electric with electric ignition	O	O	O	O	O
Water heater: 10-gallon gas/electric with electric ignition	S	S	S	S	S
Water heater bypass kit	S	S	S	S	S
Generator: Onan® 6.3 kW LP	S	S	S	S	S
Generator: Onan® 7.5 kW quiet diesel	O	O	O	O	O
2500-watt inverter (N/A with 400-watt)	O	O	O	O	O
400-watt entertainment inverter (N/A with 2500-watt)	O	O	O	O	O
Converter: solid-state 75-amp, 12-volt	S	S	S	S	S
12-volt demand water pump	S	S	S	S	S
6-volt Thermoil® auxiliary batteries (2) Std. (4) with 2500-watt inverter	S	S	S	S	S
Electronic battery distribution center	S	S	S	S	S
Battery disconnect	S	S	S	S	S
50-amp, 120-volt service	S	S	S	S	S
50-amp, 120-volt power cord	S	S	S	S	S
Exterior GFCI receptacle	S	S	S	S	S
Enclosed heated potable and holding tanks	S	S	S	S	S
Blackwater tank flush	S	S	S	S	S
City water hookup	S	S	S	S	S
Water filtration system	S	S	S	S	S
Washer/dryer prep	S	S	S	S	S
Washer/dryer combo	O	O	O	O	O
Telephone hookup	S	S	S	S	S
Cable TV/satellite hookup	S	S	S	S	S
Pre-wired for roof-mounted satellite dish	S	S	S	S	S
DSS manual satellite dish	O	O	O	O	O
Exterior shower	S	S	S	S	S
Carbon monoxide detector	S	S	S	S	S
LP gas detector	S	S	S	S	S
Smoke detector	S	S	S	S	S

Ultrasport Cockpit	3670	3677	3679	3876	3889
Molded ABS dash	S	S	S	S	S
Burl instrument panel	S	S	S	S	S
Full instrumentation	S	S	S	S	S
Electronically controlled dash air conditioning	S	S	S	S	S
Premium AM/FM/radio with CD	S	S	S	S	S
Premium AM/FM/cassette radio with multi-disk CD changer	O	O	O	O	O
4-speaker sound	S	S	S	S	S
Electronic cruise control	S	S	S	S	S
Power steering	S	S	S	S	S
Padded steering wheel	S	S	S	S	S
Douglas® tilt/telescoping steering column	S	S	S	S	S
Map lights	S	S	S	S	S
Dash fans	S	S	S	S	S
Hadley® air horns	S	S	S	S	S
Tinted wraparound windshield	S	S	S	S	S
Windshield privacy wrap	S	S	S	S	S
Front-mounted power mirrors	S	S	S	S	S
Floor mats	S	S	S	S	S
Ultra-leather reclining driver's seat with 6-way power	S	S	S	S	S
Ultra-leather reclining passenger seat	S	S	S	S	S
3-point integrated seat and shoulder belts	S	S	S	S	S
Rosen® full-size sun visors	S	S	S	S	S
Carefree® electric sun visors with manual side shade	O	O	O	O	O
Back-up monitor system	S	S	S	S	S
Drink holders	S	S	S	S	S

Weights and Measures	3670	3677	3679	3876	3889
Chassis	Freightliner	Freightliner	Freightliner	Freightliner	Freightliner
Wheelbase (in.)	228	228	228	242	242
GVWR (lbs.)	26,850	26,850	26,850	27,910	27,910
GCWR (lbs.)	31,850	31,850	31,850	32,910	32,910
Freshwater system (appx. gal.)	99	99	99	99	99
Greywater (appx. gal.)	50	50	50	50	50
Blackwater (appx. gal.)	50	50	50	50	50
LP (lbs.)	126	126	126	126	126
Sleeping capacity	4	4	4	4	4
Std. UVW (appx. lbs.)	19,773	20,966	20,454	22,004	22,424
Overall height with A/C	12'0"	12'0"	12'0"	12'0"	12'0"
Overall length	38'3"	38'3"	38'3"	39'5"	39'5"
Overall width	101"	101"	101"	101"	101"

S = Standard O = Optional N/A = Not available IPO = In place of

Due to constant product improvements, the specifications, component parts and standard/optional equipment are subject to change without notice or obligation. Product photography or diagrams may show equipment that is optional. Damon Corporation reserves the right to make changes in prices and models and to discontinue models without notice or obligation. Components, parts or chassis may have been manufactured at times other than the model year indicated. All capacities are approximate and dimensions are nominal. All dry weights are based on standard model features and do not include optional features or equipment. Various RV components and features may differ to conform to local codes.

Official Motorhome of
DC 9/01 © 2001 Damon Corporation
Printed in U.S.A.





Damon[®]
Value by Design

Damon Corporation • P.O. Box 2888 • Elkhart, IN 46515
Information 219-389-0179 or 1-800-577-5692
Customer service 800-860-3812
www.DamonRV.com