



Damon
Value by Design



Damon Corporation • P.O. Box 2888 • Elkhart, IN 46515
Literature or Dealers: 219-389-0179 or 1-800-577-5692
Customer service 800-860-3812.
www.DamonRV.com



Damon
Value by Design

DAYBREAK 2002

TIRED OF HO-HUM VACATIONS? HERE'S YOUR WAKE-UP CALL.

DayBreak™ is a richly appointed, full-size, wide-body motorhome with all the power and performance you need to put more zip in your getaways.

So it'll cost a fortune, right? Surprise! It sells for about the price of a mini motorhome.

How does Damon do it? By drawing on its years of experience and know-how to keep manufacturing costs low. And that lets them pass the savings on to you — with no sacrifices in style or comfort.

In fact, to look at the 2002 DayBreak, you'd never know it was pleasingly affordable. It's stunning. And its range of amenities goes well beyond what other, similarly priced motorhomes offer. Why keep on dreaming about the ideal RV? Wake up to the pleasure of DayBreak.

- Exterior storage in the 2002 DayBreak is real, designated storage with locking, 1" -thick, insulated compartment doors — not just a hole routed out of the sidewall, as with some other competitively priced RVs.
- Ceiling-ducted central air conditioning does a better job of cooling the coach and is up, out of the way of cabinets. Wall-mounted thermostatic control is optional.
- DayBreak's light weight and superb road handling are largely the result of its aluminum framing.
- For a more rigid and durable coach, DayBreak has solid, 2" wall and floor construction.
- Fully enclosed and heated holding tanks enable camping year-round or in cooler climates.
- DayBreak's vacuum-bond laminated fiberglass walls are the same as those used in \$150,000 motorhomes.



Model 3270 • Terra Firma Interior ▶





Model 3275 • Mercury Moss Interior



Model 3275 • Mercury Moss Interior

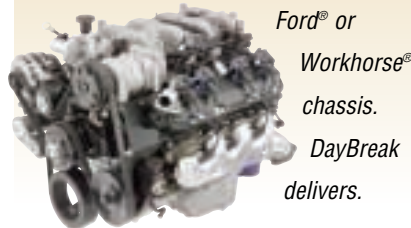
◀ Model 3270 • Terra Firma Interior

- The optional electric entrance step is easy to get out of the way when not in use.
- Reclining swivel captain's chairs provide supreme comfort in the cab.
- Cabinet doors are made of solid wood for added durability and a more finished look.
- DayBreak provides an incredible amount of storage space — inside and out, including easy-to-access pass-through basement storage.
- For your entertainment, DayBreak has an AM/FM/cassette system and, in the front overhead, a 19" color TV with full-function remote, an antenna, a booster and a jack.
- Decorator window lambrequins enhance the interior design, while roller shades and drapes increase privacy and appeal throughout.
- DayBreak's unique StepSaver™ kitchen puts everything well within reach to make meal preparation quick and easy.
- Adding to DayBreak's home-like appeal is a double-bowl sink with an oversized dish bowl.
- A 12" x 12" vinyl tile floor is standard in the kitchen, providing high durability, low maintenance and the appealing look of classic ceramic tiles.
- The master bedroom is a marvel of comfort with its queen-size bed, designer bedspread with a matching headboard and matching window treatments and abundant cabinets (including a convenient nightstand shelf that slides out of the way when not needed).
- You'll take comfort in knowing your 2002 DayBreak has passed a strenuous 400-point inspection test as part of Damon's StartRight Quality Assurance® program.
- DayBreak also gives you the benefits of Damon's exclusive Total Quality Service™ (TQS) initiative. Ask your dealer for details.

To keep your RV experience running smoothly and efficiently, whatever you expect from it, Damon gives you the option of 50-amp service and a choice of three top-performance generators: a 5.0-kW Generac® ... a 5.5-kW Onan® Emerald Advantage™ ... or a 7.0-kW Onan® Emerald Advantage™



The power to go where you want when you want. And to travel freely, without hassles. That's a big part of a motorhome's appeal. And nobody gives you the power like Damon. You'll feel it the moment you turn the key on DayBreak's engine. And you'll really feel it as you traverse the roughest, steepest, most challenging terrain, supported by a rugged



Ford® or Workhorse® chassis. DayBreak delivers.

DayBreak's seamless, one-piece EPDM rubber roof is so resistant to sun damage and the elements that it comes with a full 12-year warranty. It also provides excellent thermal and acoustical insulation. Radius corners, along with the roof's crown, allow proper water run off.

The aluminum-frame crowned roof features beaded block-foam insulation and a residential-style ceiling.

Optional paint packages increase exterior visual appeal. (See page 7.)

Walls and openings are aluminum-framed. Walls are also vacuum-bonded with beaded block-foam insulation.

Centrally ducted air — unusual in DayBreak's class — ensures consistent climate throughout the coach (with a standard 13,500-BTU air conditioner).

DayBreak is satellite- and cable-TV-ready to increase your entertainment options.

Great-looking, white-framed, radius-corner windows virtually eliminate those annoying black streaks that run down the sides of RVs from weathered black window frames.

DayBreak has a steel firewall and a steel-truss basement structure system; an insulated floor system with structurewood and beaded block-foam insulation; and a heated tank area with insulated doors.

All awnings are standard and protect the slideout roof as well as the patio area.

A large windshield and pantographic dual-arm wipers provide an extra measure of safety.

Large side-mounted mirrors give you a commanding view of the road behind you.



DayBreak™ Differences

Don't "Bar-B-Q" — "RVQ" with Damon's optional outdoor barbecue grill! It attaches easily to a pre-installed exterior side-wall rail and a gas line. There's no messing with propane tanks and accessories. The durable baked-enamel finish cleans in a snap. And the grill stows in its own zippered bag in the basement storage compartment.



An optional driver's side door makes cab access and egress much more convenient.



Dash fans really help defrost the huge viewing area!



Solid-wood cabinet doors with cathedral framing provide beauty and long-lasting appeal.



An optional backup monitor lets you maneuver with greater ease and safety — a feature you might not expect in a motorhome so economically priced.

A highly durable, low-maintenance, 12" x 12" vinyl tile floor with a ceramic-tile look is standard in kitchen.



Beauty, Brawn and Benefits Galore

Advanced engineering. Computer-aided design. Innovative manufacturing technologies. And feedback from RVers just like you. All this has gone into the making of a 2002 DayBreak Class A Motorhome. You can see the difference it makes. No other motorhome in DayBreak's class offers so impressive a range of features.

DayBreak™ Gives You Choices That Make The RV Life Fit Your Life.



Cashmere

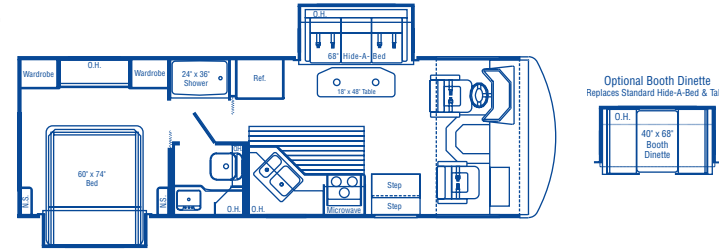


Copper



Green Mist

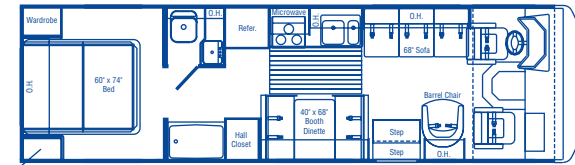
2775



Telescoping coffee/dining table • Built in laundry hamper in bedroom

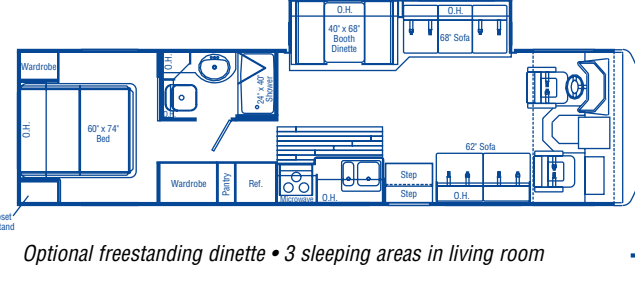


2960

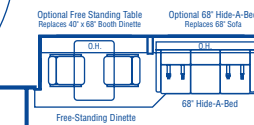


Seatbelts for eight • Our most affordable model

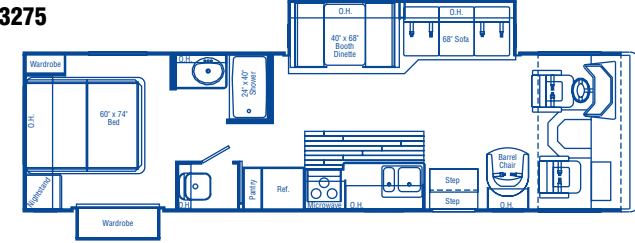
3270



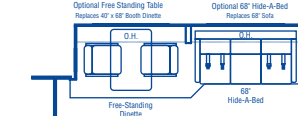
Optional freestanding dinette • 3 sleeping areas in living room



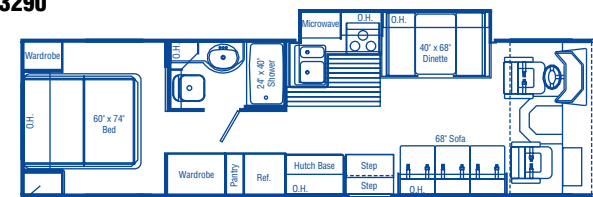
3275



Large slideout closet • Two windows in bedroom • Optional freestanding dinette • Pantry



3290



Slideout kitchen • China hutch • Optional computer desk • Pantry



Décor ...

Damon's interior designers and engineers have created a choice of environments that not only help you feel right at home, but also lend a sense of personality to your DayBreak. Fabric selections, trimwork, countertops, flooring and window treatments are carefully coordinated to provide a customized look — one that's fashionable, yet timeless; exciting, yet tasteful.

Floor Plans ...

Notions about what the RV life should entail are unique to every RVer. That's why Damon offers the 2002 DayBreak in a variety of floor plans, with a number of useful options. Regardless of which floor plan you choose, you can be sure it's thoughtfully laid out to provide the roomiest, most comfortable, most convenient mobile living experience you've ever had.

Paint ...

DayBreak's exterior has a remarkably fluid, energized look, thanks in large part to its clean, bold, optional paint stylings. Few other motorhomes in its class offer paint of any kind, so DayBreak truly breaks the mold of what an ultra-affordable RV should look like. Who says "basic" has to be bland?



Oak



Terra Firma



Mercury Moss



Milky Way

DayBreak Exterior	2775	2960	3270	3275	3290
Paint package	O	O	O	O	O
Wide-body design	S	S	S	S	S
Roof rack	O	O	O	O	O
Rear ladder	S	S	S	S	S
Roof vents	S	S	S	S	S
Rubber roof	S	S	S	S	S
Aerodynamic front fiberglass cap	S	S	S	S	S
Contoured, integrated front bumper	S	S	S	S	S
Automotive-style rear bumper	S	S	S	S	S
Awning rail	S	S	S	S	S
Side-mounted patio awning*	S	S	S	S	S
Side-mounted awning over slideout*	S	N/A	S	S	S
Entry-assist handrail	S	S	S	S	S
White smooth fiberglass exterior with deluxe graphics	S	S	S	S	S
Radius-cornered domed roof	S	S	S	S	S
Locking exterior storage doors	S	S	S	S	S
White trimmed, radius-topped entrance door	S	S	S	S	S
White framed, radius corner windows	S	S	S	S	S
Dual pane windows	O	O	O	O	O
Porch light	S	S	S	S	S
Lined and lighted storage compartments	S	S	S	S	S
Pass-through storage compartment	S	S	S	S	S
Sewer hose storage	S	S	S	S	S
RVQ grill	O	O	O	O	O

*Awnings not available on wide body models in some locations. Check local regulations for applicable laws.

Daybreak Cockpit	2775	2960	3270	3275	3290
Burl instrument panel	S	S	S	S	S
Molded ABS dash	S	S	S	S	S
AM/FM cassette stereo	S	S	S	S	S
AM/FM cassette CD	O	O	O	O	O
Cruise control	S	S	S	S	S
Power steering	S	S	S	S	S
Tilt steering wheel	S	S	S	S	S
Full instrumentation	S	S	S	S	S
Map lights	S	S	S	S	S
Dash fans	S	S	S	S	S
Driver's door with slider window	O	O	O	O	O
Tinted wraparound windshield	S	S	S	S	S
Windshield privacy drape	S	S	S	S	S
Side-mounted power mirrors	O	O	O	O	O
Upgrade side-mounted mirrors	S	S	S	S	S
Floor mats	O	O	O	O	O
Reclining swivel captain's chairs	S	S	S	S	S
3-point, wall-mounted seat belts	S	S	S	S	S
Sun visors	S	S	S	S	S
Electronically controlled dash air conditioning	S	S	S	S	S
Backup monitor system	O	O	O	O	O
Upgrade back-up monitor system (flip up LCD screen)	O	O	O	O	O
Drink holders	S	S	S	S	S

Daybreak Utilities	2775	2960	3270	3275	3290
Air conditioner: 11,000-BTU ducted central (rear)	O	O	O	O	O
Air conditioner: 13,500-BTU ducted central (front)	S	S	S	S	S
Air conditioner: 15,000-BTU ducted central (front)	O	O	O	O	O
Wall-mounted thermostatically controlled air conditioning	O	O	O	O	O
Furnace: 31,000 BTU electronic ignition floor-ducted	S	S	S	S	S
Water heater: 6-gallon gas with electric ignition	S	S	S	S	S
Water heater bypass kit	S	S	S	S	S
Pre-wired for generator with auto changeover	S	S	S	S	S
Generator: Generac® 5.0 kW Impact	O	O	O	O	O
Generator: Onan® 5.5 kW Emerald Advantage	O	O	O	O	O
Generator: Onan® 7.0 kW Emerald Advantage (requires 50-amp service)	O	O	O	O	O
Converter: solid state 45-amp, 12-volt	S	S	S	S	S
12-volt demand water pump	S	S	S	S	S
Dual 6-volt auxiliary batteries	S	S	S	S	S
Electronic battery distribution center	S	S	S	S	S
Battery disconnect	S	S	S	S	S
30-amp/120-volt service	S	S	S	S	S
50-amp/120-volt service	O	O	O	O	O
Exterior shower	O	O	O	O	O
Enclosed and heated holding tanks	S	S	S	S	S
City water hookup	S	S	S	S	S
Telephone hookup	S	S	S	S	S
Cable TV/satellite hookup	S	S	S	S	S
Pre-wired for roof-mounted satellite dish	S	S	S	S	S
Exterior GFCI receptacle	S	S	S	S	S
Carbon monoxide detector	S	S	S	S	S
LP gas detector	S	S	S	S	S
Smoke detector	S	S	S	S	S

Daybreak Chassis	2775	2960	3270	3275	3290
Leveling jacks	S	O	S	S	S
Spare tire, wheel and bracket	O	O	O	O	O
Stainless steel wheel covers	S	S	S	S	S
Stainless steel wheel liners	O	O	O	O	O
Front and rear mud flaps	S	S	S	S	S
Radial tires	S	S	S	S	S
Trailer hitch (3,500 lbs.)	S	S	S	S	S
Under-hood light	S	S	S	S	S
Emergency-start circuit	S	S	S	S	S
Automatic transmission with overdrive	S	S	S	S	S

Daybreak Entry	2775	2960	3270	3275	3290
Electric entrance step	O	O	O	O	O
Integrated entrance step	S	S	S	S	S
Entry-assist grab handle	S	S	S	S	S
Deadbolt door lock	S	S	S	S	S
Battery access in stairwell	S	S	S	S	S

S = Standard O = Optional N/A = Not available IPO = In place of

Daybreak Kitchen	2775	2960	3270	3275	3290
Refrigerator: flush-mounted, double-door	S	S	S	S	S
Refrigerator: large flush-mounted, double-door	O	O	O	O	O
Refrigerator: solid wood front	O	O	O	O	O
3-burner range and oven	S	S	S	S	S
Folding range cover	S	S	S	S	S
Microwave oven	S	S	S	S	S
Lighted power range hood	S	S	S	S	S
Monitor panel with LPG readout	S	S	S	S	S
Double-bowl sink with oversized dish bowl	S	S	S	S	S
Sink cover	S	S	S	S	S
Self-edged countertops throughout	S	S	S	S	S
Self-edged countertop extension	N/A	N/A	N/A	N/A	O
Solid wood cabinet doors throughout	S	S	S	S	S
12" x 12" vinyl tile flooring	S	S	S	S	S
Wood plank flooring	O	O	O	O	O
Booth dinette with padded top	O	S	S	S	S
Mini blind	S	S	S	S	S
Wallpaper border	S	S	S	S	S
Fire extinguisher	S	S	S	S	S

Daybreak Living Area	2775	2960	3270	3275	3290
One barrel chair and table IPO sofa	N/A	N/A	O	N/A	N/A
Sofa bed	N/A	S	S	S	S
Hide-a-bed	S	N/A	O	O	N/A
Lambrequin window treatments	S	S	S	S	S
Roller shades throughout	S	S	S	S	S
Mini blinds throughout	O	O	O	O	O
Carpeting with pad	S	S	S	S	S
Decorator clock and mirror	S	S	S	S	S
19" color TV with full-function remote in front overhead with antenna, booster and jack	S	S	S	S	S
Video package (VCR and control center)	O	O	O	O	O

Daybreak Bathroom	2775	2960	3270	3275	3290
Shower with surround	S	S	S	S	S
Shower curtain	S	S	S	S	S
Bypass shower door	O	O	O	O	O
Skylight in tub/shower	S	S	S	S	S
Power vent	S	S	S	S	S
Hand-flush toilet	S	S	S	S	S
Foot-flush toilet	O	O	O	O	O
Medicine cabinet	S	S	S	S	S
Hardwood-framed mirror	S	S	S	S	S
Self-edged countertops throughout	S	S	S	S	S

S = Standard O = Optional N/A = Not available IPO = In place of

Daybreak Bedroom	2775	2960	3270	3275	3290
Innerspring mattress	S	S	S	S	S
Upgrade innerspring mattress	O	O	O	O	O
Bedsprad and headboard	S	S	S	S	S
TV area and jack	S	S	S	S	S
Jalousie windows	S	S	S	S	S
13" color TV	O	O	O	O	O
Roller shades with drapes	S	S	S	S	S
Mini blinds	O	O	O	O	O

Weights and Measures	2775	2960	3270	3275	3290
Chassis	W/F*	W/F*	W/F*	W/F*	W/F*
Wheelbase (in.)	178	178	216.5	208	208
GVWR (lbs.)	18k/20.5k	15k/15.7k	17k/20.5k	18k/20.5k	18k/20.5k
GCWR (lbs.)	21k/26k	21k/21k	21k/26k	21k/26k	21k/26k
Fresh water system (appx. gal.)	69	69	69	69	69
Gray water (appx. gal.)	42	42	42	42	42
Black water (appx. gal.)	42	42	42	42	42
LP (lbs.)	82	82	82	82	82
Sleeping capacity	4	4	5	5	5
Std. UVW (appx. lbs.)	13079/13649	11877/12325	14152/14457	14304/14874	13869/14439
Overall height with A/C	11'3"	11'3"	11'3"	11'3"	11'3"
Overall length	28'10"	31'2"	34'9"	34'1"	33'1"
Overall width	100	100	100	100	100

The weights listed are for units with full fuel tanks and no options.

* Workhorse®/Ford®



Due to constant product improvements, the specifications, component parts and standard/optional equipment are subject to change without notice or obligation. Product photography or diagrams may show equipment that is optional. Damon Corporation reserves the right to make changes in prices and models and to discontinue models without notice or obligation. Components, parts or chassis may have been manufactured at times other than the model year indicated. All capacities are approximate and dimensions are nominal. All dry weights are based on standard model features and do not include optional features or equipment. Various RV components and features may differ to conform to local codes.

DC 7/01 © 2001 Damon Corporation
Printed in U.S.A.

