

YOU CAN MEET
THE CHALLENGE TO LIVE LIFE FULLY.

2001 CHALLENGER

With a 2001 Challenger® Motorhome, you have all you need to tackle RV adventure head-on. This is first-class transportation and a welcome haven all rolled into one beautiful package. We're talkin' value here. And nobody does value better than Damon.

Just look at what Challenger offers: a wide body for expansive living and superior road handling ... full-basement pass-through storage that lets you load up more of your favorite belongings easily ... a tasteful, appealing, home-like decor ... and a range of luxuries you'd think would drive Challenger out of your range — until you see its budget-friendly price. Again, that's value. So, what are you waiting for? There's a whole world out there for you and your Challenger to challenge ... and conquer.

- Paddle latches on exterior doors give you a good grip and make it easier to get into storage compartments.
- An automotive-style wire harness keeps electrical wires safely bundled and out of the way.
- You never know where adventure might lead, so it's nice to know Challenger gives you drivability options like ultra-leather captain's chairs and a backup monitor system.
- Lambrequin window treatments add an extra touch of class.
- Cabinet doors are made of solid wood for added durability and a richer look.
- Hardwood plank flooring lends beauty and functionality to the kitchen area.
- Smooth-operating slideouts provide a hassle-free way to increase your living space.



Model 339 • Jupiter Sand decor • Maple



A MOVEABLE FEAST

2001 CHALLENGER

- Challenger's unique StepSaver™ kitchen puts everything well within reach to make meal preparation quick and easy.
- For your entertainment, Challenger has a 19" in-dash color TV with full-function remote, an antenna booster and a jack.
- Challenger provides an incredible amount of storage space — including a massive pass-through basement storage compartment.

Model 330 • Jupiter Sand decor • Light Oak

A SOFT REPOSE

2001 CHALLENGER



- You'll sleep like a baby in Challenger's elegant master bedroom, complete with a queen-size bed, a designer bedspread, matching window treatments and abundant cabinet storage.
- You'll take comfort in knowing your 2001 Challenger has passed a strenuous 400-point inspection test as part of Damon's StartRight Quality Assurance™ program.

- Challenger also gives you the benefits of Damon's exclusive Total Quality Service™ (TQS) initiative. Ask your dealer for details.

Model 339 • Jupiter Sand decor • Maple

CHALLENGER VALUE ALL AROUND



- Aero-style gelcoat front cap
- Sidemounted power mirrors
- Easy-access engine



- Fully integrated gelcoat cap
- Exclusive rear storage area
- Jalousie bedroom windows



- Awning, standard
- Stainless steel wheel liners
- Extra-long wheelbase for optimal stability



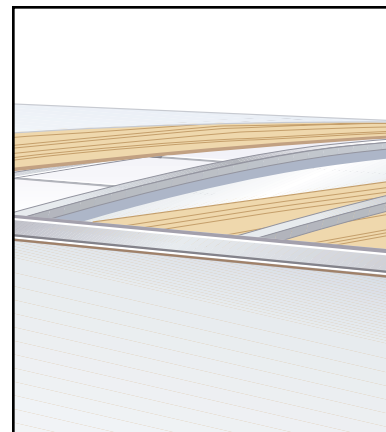
- Optional driver's door
- Optional exterior shower
- Enclosed and heated holding tanks



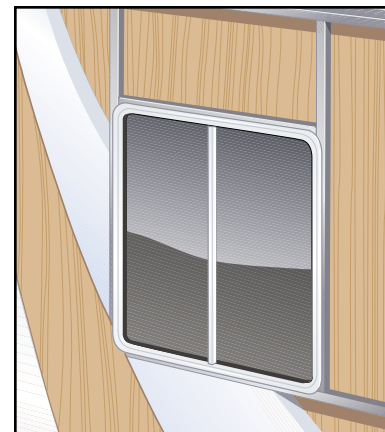
- All slideout models include:
- Leveling jacks, standard
 - Additional awning over slideout
 - Smooth rack and pinion slideout operation



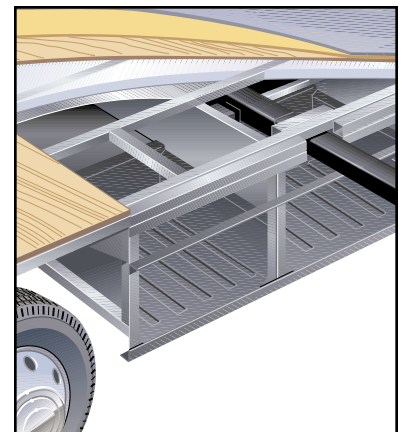
- Compartment of tough rotocast polyethylene
- Full-basement pass-through storage
- Secure paddle-latch storage doors



- ABS-ducted air conditioning with unblocked plenums
- Aluminum-frame crowned roof with beaded block-foam insulation
- Residential-styled ceiling



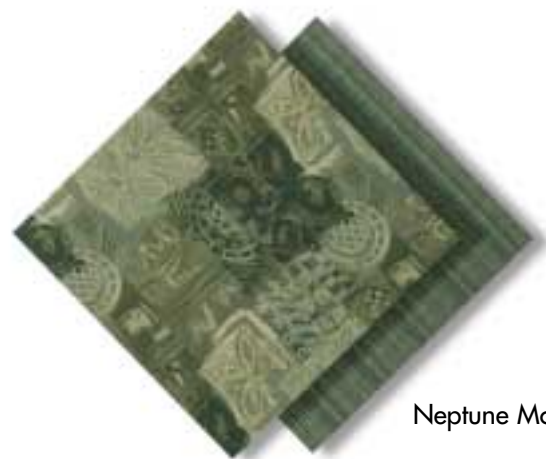
- Aluminum-framed walls and openings
- Vacuum-bonded walls with beaded block-foam insulation
- White powdercoated window frames



- Steel firewall and steel truss structure system
- Insulated floor system with structurewood and beaded block-foam insulation
- Heated tank area with insulated doors

www.damonrv.com

DECOR



Neptune Moon



Light Oak
(standard)



Maple
(optional)



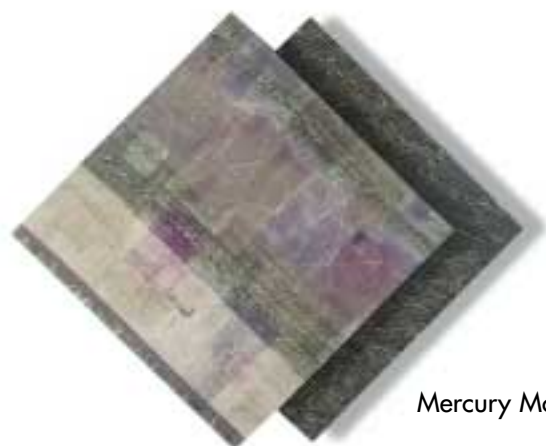
Jupiter Sand



Aspen



Parade Blue



Mercury Moss



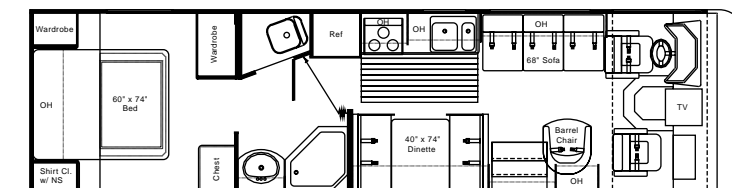
Silver

PAINT

FLOOR PLANS

MODEL 310

Chassis	Workhorse/Ford
Wheelbase (in.)	216.5
GVWR (lbs.)	17,000/18,000
GCWR (lbs.)	21,000/25,000
Overall length	33'8"
Overall width	100"
Overall height with A/C	11'7"
Fresh water system (appx. gal.)	75
Grey water (appx. gal.)	50
Black water (appx. gal.)	50
LP (lbs.)	105
Sleeping capacity	4

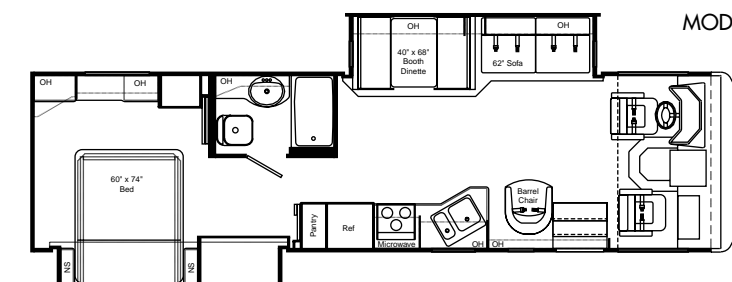


Booth dinette • Neo-angle shower

MODEL 310

MODEL 329

Chassis	Workhorse/Ford
Wheelbase (in.)	216.5
GVWR (lbs.)	18,000/20,500
GCWR (lbs.)	21,000/25,000
Overall length	34'3"
Overall width	100"
Overall height with A/C	11'7"
Fresh water system (appx. gal.)	60
Grey water (appx. gal.)	50
Black water (appx. gal.)	50
LP (lbs.)	105
Sleeping capacity	4

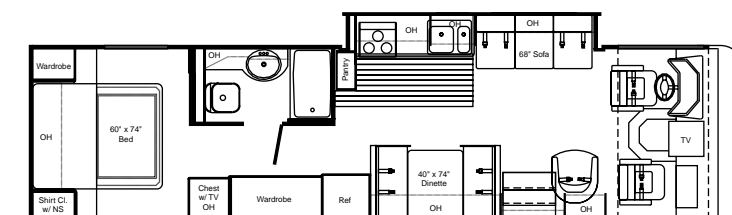


Slideout living area • Booth dinette • Slideout bedroom

MODEL 329

MODEL 330

Chassis	Workhorse/Ford
Wheelbase (in.)	216.5
GVWR (lbs.)	18,000/18,000
GCWR (lbs.)	21,000/25,000
Overall length	35'1"
Overall width	100"
Overall height with A/C	11'7"
Fresh water system (appx. gal.)	75
Grey water (appx. gal.)	50
Black water (appx. gal.)	50
LP (lbs.)	105
Sleeping capacity	4

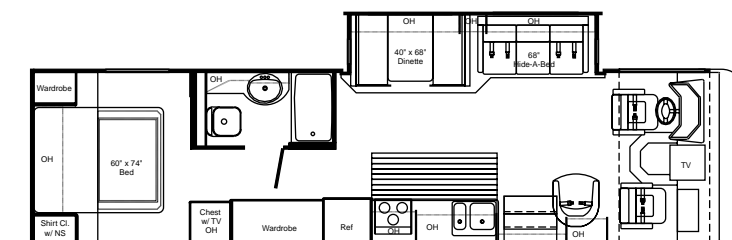


Slideout kitchen • Booth dinette • Large exterior pass-through storage

MODEL 330

MODEL 335

Chassis	Workhorse/Ford
Wheelbase (in.)	216.5
GVWR (lbs.)	18,000/20,500
GCWR (lbs.)	21,000/25,000
Overall length	35'1"
Overall width	100"
Overall height with A/C	11'7"
Fresh water system (appx. gal.)	75
Grey water (appx. gal.)	50
Black water (appx. gal.)	50
LP (lbs.)	105
Sleeping capacity	4

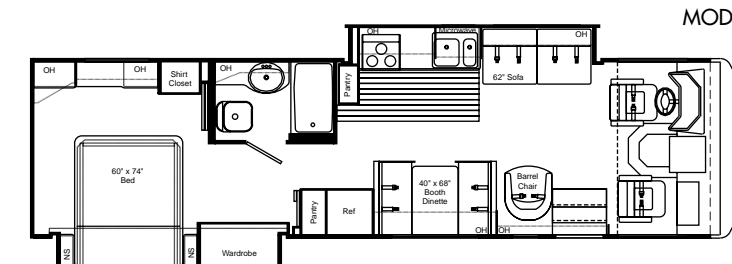


Slideout living area • Booth dinette • Large exterior pass-through storage

MODEL 335

MODEL 339

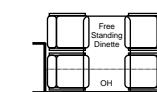
Chassis	Workhorse/Ford
Wheelbase (in.)	216.5
GVWR (lbs.)	18,000/20,500
GCWR (lbs.)	21,000/25,000
Overall length	34'3"
Overall width	100"
Overall height with A/C	11'7"
Fresh water system (appx. gal.)	60
Grey water (appx. gal.)	50
Black water (appx. gal.)	50
LP (lbs.)	105
Sleeping capacity	4



Slideout kitchen • Booth dinette • Slideout bedroom

MODEL 339

Options:



Models available: 329, 335

Models available: 310, 330, 339



SPECIFICATIONS

Challenger Exterior	310	329	330	335	339
White smooth fiberglass exterior	S	S	S	S	S
Aerodynamic front and rear fiberglass caps	S	S	S	S	S
Contoured front integrated bumper	S	S	S	S	S
Wide-body design	S	S	S	S	S
Deluxe graphics	S	S	S	S	S
Paint package	O	O	O	O	O
Side-mounted patio awning*	S	S	S	S	S
Side-mounted awning over slideout	N/A	S	S	S	S
Awning rail	S	S	S	S	S
Locking exterior storage doors	S	S	S	S	S
Prop rods for storage doors under slideout	S	S	S	S	S
Full basement pass-through storage	S	S	S	S	S
Easy-to-clean, lighted, rotocast storage compartments	S	S	S	S	S
Sewer hose storage	S	S	S	S	S
Radius-corner domed roof	S	S	S	S	S
Roof rack	S	S	S	S	S
Roof ladder	S	S	S	S	S
Roof vents	S	S	S	S	S
Rubber roof	S	S	S	S	S
White trimmed, radius-top entrance door	S	S	S	S	S
Entry-assist handle	S	S	S	S	S
White frame radius-corner slider windows	S	S	S	S	S
Dual-pane windows	O	O	O	O	O
Fog lights	S	S	S	S	S
Porch light	S	S	S	S	S

* Awnings not available on wide-body models in some locations. Check local regulations for applicable laws.

Challenger Kitchen	310	329	330	335	339
Booth dinette with padded top	S	S	S	S	S
Freestanding dinette with 4 chairs	O	O	O	O	O
Refrigerator: flush-mount double-door	S	S	S	S	S
Refrigerator: large flush-mount double-door	O	O	O	O	O
Refrigerator: large double-door with icemaker	O	O	O	O	O
Refrigerator: solid wood front*	O	O	O	O	O
Pantry	N/A	N/A	S	N/A	S
Solid wood cabinet doors throughout*	S	S	S	S	S
Microwave oven	S	S	S	S	S
Fantastic® power vent	O	O	O	O	O
Lighted power range hood and monitor panel (including LPG readout)	S	S	S	S	S
3-burner range and oven	S	S	S	S	S
Folding range cover	S	S	S	S	S
Sink cover	S	S	S	S	S
Double-bowl sink with oversized dish bowl	S	S	S	S	S
Cutlery drawer	S	N/A	N/A	S	N/A
Wood-plank flooring*	S	S	S	S	S
Fire extinguisher	S	S	S	S	S
Wood-tone, T-mold countertops	S	S	S	S	S
Mini blind	S	S	S	S	S

* Oak or maple

Challenger Living Area	310	329	330	335	339
Sofa bed	S	S	S	N/A	S
Hide-a-bed	N/A	N/A	N/A	S	N/A
Barrel chair	S	S	S	S	S
Day/night shades (except kitchen)	S	S	S	S	S
Lambrequin window treatments	S	S	S	S	S
100% nylon carpeting with stain treatment and pad	S	S	S	S	S
Decorator clock and mirror	S	S	S	S	S
19" color TV in dash with full-function remote, antenna booster and jack	S	S	S	S	S
Video package (VCR and control center)	O	O	O	O	O

Challenger Bedroom	310	329	330	335	339
Innerspring mattress	S	S	S	S	S
Upgrade innerspring mattress	O	O	O	O	O
Jalousie windows	S	S	S	S	S
Bedsprad and headboard	S	S	S	S	S
TV area and jack	S	S	S	S	S
13" TV	O	O	O	O	O

Challenger Utilities	310	329	330	335	339
Air conditioner: 13,500-BTU ducted central (front)	S	S	S	S	S
Air conditioner: 15,000-BTU ducted central upgrade (front)	O	O	O	O	O
Air conditioner: 11,000-BTU ducted central (rear)	O	O	O	O	O
Wall-mounted thermostatically controlled air conditioning	O	O	O	O	O
35,000-BTU electronic-ignition floor-ducted furnace	S	S	S	S	S
Generator: Onan® Marquis Gold 5.5 kW	O	O	O	O	O
Generator: Onan® Marquis Gold 7.0 kW (requires 50-amp service)	O	O	O	O	O
Pre-wire for generator with auto changeover	S	S	S	S	S
Dual 6-volt auxiliary batteries	S	S	S	S	S
Battery disconnect	S	S	S	S	S
30-amp, 120-volt service	S	S	S	S	S
50-amp, 120-volt service	O	O	O	O	O
Solid-state 45-amp, 12-volt power converter	S	S	S	S	S
12-volt demand water pump	S	S	S	S	S
Telephone hookup	O	O	O	O	O
Cable TV/satellite hookup	S	S	S	S	S
Pre-wired for roof-mounted satellite dish	S	S	S	S	S
DSS manual satellite	O	O	O	O	O
City water hookup	S	S	S	S	S
Exterior shower	O	O	O	O	O
Water heater bypass kit	S	S	S	S	S
6-gallon gas water heater with electric ignition	S	S	S	S	S
Enclosed heated potable and holding tanks	S	S	S	S	S
Carbon monoxide detector	S	S	S	S	S
LP gas detector	S	S	S	S	S
Smoke detector	S	S	S	S	S
Electronic battery distribution center	S	S	S	S	S
Exterior GFCI receptacle	S	S	S	S	S

S = Standard O = Optional N/A = Not Available

SPECIFICATIONS

Challenger Cockpit	310	329	330	335	339
Burl instrument panel	S	S	S	S	S
Automotive-style dash with ABS instrument pod	S	S	S	S	S
Dash fans	S	S	S	S	S
Electronically controlled dash air conditioning	S	S	S	S	S
Backup monitor system	O	O	O	O	O
Tinted wraparound windshield	S	S	S	S	S
Windshield privacy drape	S	S	S	S	S
Side-mounted power mirrors	S	S	S	S	S
Driver's door with slider window	O	O	O	O	O
Storage above driver and passenger window	S	S	S	S	S
Ultra-leather captain's chairs (set of two)	O	O	O	O	O
Reclining swivel captain's chairs	S	S	S	S	S
3-point, wall-mounted seat belts	S	S	S	S	S
Cruise control	S	S	S	S	S
Full instrumentation	S	S	S	S	S
Power steering	S	S	S	S	S
Tilt steering wheel	S	S	S	S	S
Floor mats	S	S	S	S	S
Sun visors	S	S	S	S	S
Protector sun visors	O	O	O	O	O
AM/FM cassette stereo	S	S	S	S	S
AM/FM cassette CD	O	O	O	O	O
Map lights	S	S	S	S	S
Drink tray	S	S	S	S	S

Challenger Bathroom	310	329	330	335	339
Tub with surround	N/A	S	S	S	S
Shower with surround	S	N/A	N/A	N/A	N/A
Shower door	S	S	S	S	S
Skylight in tub/shower	S	S	S	S	S
Foot-flush toilet	S	S	S	S	S
Power vent	S	S	S	S	S
Medicine cabinet with solid wood door and mirror*	S	S	S	S	S
Wood-tone, T-mold countertops	S	S	S	S	S

* Oak or maple

Challenger Entry	310	329	330	335	339
Electric entrance step	S	S	S	S	S
Integrated entrance step	S	S	S	S	S
Deadbolt door lock	S	S	S	S	S
Interior entry-assist handle	S	S	S	S	S
Storage in stairwell	S	S	S	S	S
Battery access in stairwell	S	S	S	S	S

Challenger Chassis	310	329	330	335	339
4-speed auto transmission with overdrive	S	S	S	S	S
Radial tires	S	S	S	S	S
Stainless steel wheel liners	S	S	S	S	S
Spare tire	S	S	S	S	S
Front and rear mud flaps	S	S	S	S	S
Trailer hitch (3,500 lbs.)	S	S	S	S	S
Leveling jacks	O	S	S	S	S
Emergency start circuit	S	S	S	S	S
Under-hood light	S	S	S	S	S
Layer of neoprene vibration dampener	S	S	S	S	S

S = Standard O = Optional N/A = Not Available

DAMON VALUES



Standard solid wood cabinet doors



Battery access in step



Wood-plank kitchen floor (oak shown)



Easy-access engine



Pre-wired for satellite hook up



19" TV

DAMON® CHALLENGER™ MOTORHOME FOR 2001



Your Challenger dealer:

Due to constant product improvements, the specifications, component parts and standard/optional equipment are subject to change without notice or obligation. Product photography or diagrams may show equipment that is optional. Damon Corporation reserves the right to make changes in prices and models and to discontinue models without notice or obligation. Components, parts or chassis may have been manufactured at times other than the model year indicated. All capacities are approximate and dimensions are nominal. All dry weights are based on standard model features and do not include optional features or equipment. Various RV components and features may differ to conform to local codes.

DC 10/00
© 2000 Damon Corporation
Printed in U.S.A.