

ESCAPER 2000 DIESEL MOTORHOME

The affordable way to get away — in absolute luxury.



Damon
Value by Design

*A NEW CENTURY.
A NEW MILLENNIUM.
AND A NEW STANDARD FOR
VALUE IN DIESEL PUSHER
MOTORHOMES:*

ESCAPER 2000

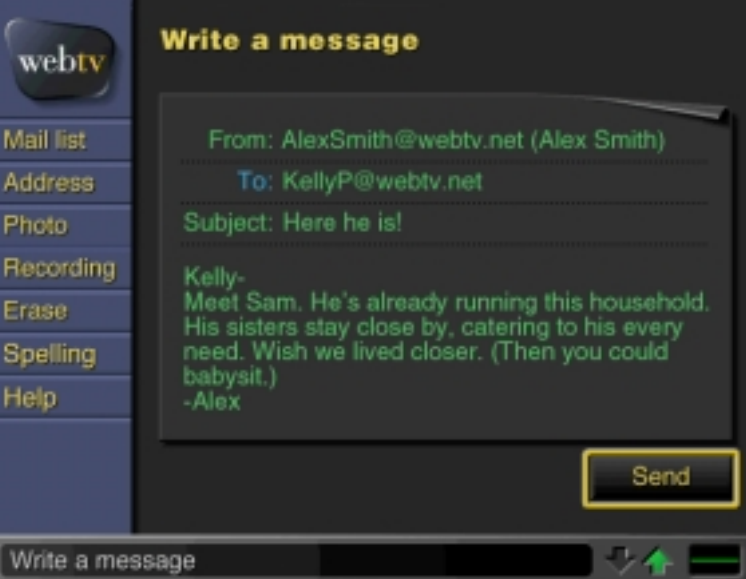
Leave it to Damon experience and ingenuity. With Escaper 2000, you get standard upscale amenities similar to or better than those found in motorhomes costing anywhere from \$60,000 to \$100,000 more.

- A 300 hp big-block diesel pusher Caterpillar® engine for optimal power and performance
- An optional Spartan Mountain Master chassis that includes a 330 hp diesel engine, a side-mounted radiator and an independent front suspension
- A dependable Allison® 6-speed transmission
- A Jacobs® exhaust brake
- Alcoa® aluminum-alloy wheels that look great and resist the corrosive effects of the elements
- A raised-rail chassis that permits roomy underfloor storage
- A space-adding slideout section
- A Masterworks™ audio system with four speakers, subwoofers and an inverter
- Plush, padded living room carpeting featuring a distinctive sculptured insert that's individually hand-carved and unique to each decor
- Damon's exclusive StepSaver™ kitchen, designed to speed and simplify meal preparation
- Durable, fashionable, easy-to-clean solid-surface countertops
- A chassis-battery solar charger

Damon
Value by Design







- An optional Web TV® Internet unit by Philips Magnavox lets you “surf the net with your TV set.” With Web TV Plus service you can also send and receive e-mail, get your stock quotes, news stories, local weather, favorite sports team scores and more, right on your TV. Receive up to 7 days of on-screen interactive TV listings, record your favorite TV shows with One-touch VCR programming, watch television, and surf the Internet at the same time with WebPIP.™ Web TV Plus service is the easiest way to get on the Internet *plus* the best way to watch TV.



ESCAPER 2000

- An optional real-time Global Positioning System (GPS) that helps you plan your trip, then instantly shows you where you are and voice-prompts you on where to go; the system includes a 6-1/2" Panasonic liquid crystal color display monitor, changeable road-map CDs, a 10-disc CD changer, a radio with 10 presets and a built-in color backup monitor.
- A clean, uncluttered dash, with all instruments positioned for maximum readability
- Large windows for optimum visibility, ventilation and light
- A TV monitor system that increases rear visibility when you're backing up
- Soft, supple Ultra-leather™ cab seats
- An extra-wide "buddy" passenger seat in the cab
- Attractive, functional window treatments, including day/night shades in the living room and micro-mini blinds elsewhere
- Convenient front entry through a custom-designed door
- High-line diesel bus styling that turns heads wherever you go!

Damon
Value by Design



Model 3980 ■ Barouge Decor ■ Pearwood



Model 3980 ■ White Diamond Decor ■ Light Oak



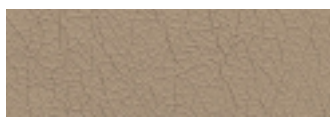
Barouge



White Diamond



Lagerfeld





ESCAPER 2000

- A richly appointed designer bedroom that includes a queen-size bed with a soft pillowtop mattress
- A bathroom with an easily accessible angled shower and a skylight
- Washer/dryer prep
- Exceptionally refined luxury decor
- Warm wood cabinetry and trimwork
- Abundant storage space inside and out
- Damon's exclusive Comfort Control Center™ that keeps interior temperatures pleasant in any climate, year-round
- The peace of mind that comes from knowing your Escaper has passed Damon's strenuous 400-point StartRight Quality Assurance test — required before it could leave the manufacturing facility
- The benefits of TQS, Damon's ongoing Total Quality Service improvement initiative, designed to meet your needs on and off the road, wherever your Escaper takes you

WARRANTY INFORMATION:

One-piece rubber roof - 12 years

Awning - 5 years

Water heater - 2 years

Range - 2 years

Refrigerator - 2 years

Gas sensor - 2 years

Everything else - 1 year



Pearwood



Light Oak

Damon
Value by Design

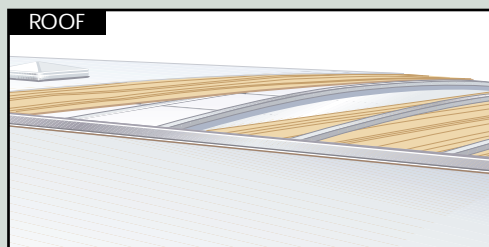


THE VALUE IS BUILT IN

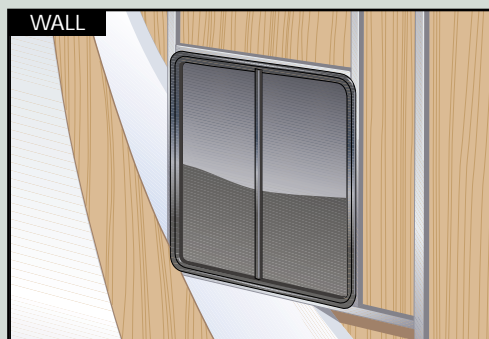
ESCAPER 2000

Escaper 2000 is the product of advanced engineering, computer-aided design and innovative manufacturing technologies. You can see the difference that makes. No other diesel pusher in Escaper's class offers so impressive a combination of beauty, brawn and benefits.

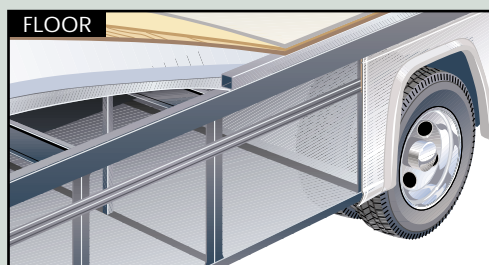
- 1 - An optional color-keyed side and door awning
- 2 - Dependable Hadley® air horns for added safety
- 3 - A huge, panoramic bus-style windshield
- 4 - Pantographic, dual-arm windshield wipers that sweep away rain, sleet and snow with ease
- 5 - Bus-style front mirrors
- 6 - An optional diesel generator for added power and performance
- 7 - Standard fog lights for increased touring safety
- 8 - A custom-designed front door
- 9 - An electrically operated single entrance step
- 10 - Computerized wheel alignment to keep the ride smooth
- 11 - A raised-rail chassis that allows ample underfloor storage
- 12 - Custom paint and graphics that give Escaper 2000 its highline bus look
- 13 - Attractive, white, anodized aluminum radius window frames with large sliding-glass windows that are tinted to keep out solar heat
- 14 - Alcoa® aluminum-alloy wheels
- 15 - An Allison® 6-speed transmission
- 16 - Two ducted roof air conditioners: 13.5 BTU in front; 13.5 BTU in back to distribute cool air extra-efficiently
- 17 - Standard ceiling vents to improve ventilation throughout the coach
- 18 - A standard back-up camera
- 19 - An aerodynamically styled rear end cap with an automotive gelcoat finish
- 20 - An easy-access engine door leading to Escaper's 300 hp Caterpillar® diesel pusher engine with easily accessible fluids
- 21 - Recessed taillights to complete the automotive look of the exterior
- 22 - Damon's exclusive One Flush System™ that allows you to empty your water tanks from one convenient location
- 23 - Heated, fully enclosed fresh - and waste-water tanks
- 24 - Damon's electric, gear-driven slideout system with smooth, simple push-button operation
- 25 - A safe, center-mounted propane tank
- 26 - An easy-turn 50° cramp angle



Escaper's crowned roof assembly is exceptionally strong. It consists of an extruded aluminum frame, lauan decking and highly energy-efficient block-foam insulation.



The elegant Ice White™ exterior of the Escaper is made of durable, easy-to-maintain fiberglass in one piece. A high-gloss gelcoat finish heightens the appeal. For added strength and protection against leaks, all window openings feature aluminum perimeter framing. Expanded polystyrene block-foam insulation — 1-1/2" in both the floor and sidewalls — increases the coach's energy efficiency.



Heavy-duty steel crossmembers with an I-shaped member welded to each end make up Escaper's foundation and provide maximum vertical strength. A neoprene gasket isolates the frame from the chassis, reducing the transmission of chassis vibration and noise to the coach. Inside, high-quality residential-style padded carpeting not only looks and feels luxurious, it also helps insulate you from temperature extremes and road noise. A hand-sculptured carpet insert, different with each decor color, lends distinction.

Damon
Value by Design



STORAGE FEATURES

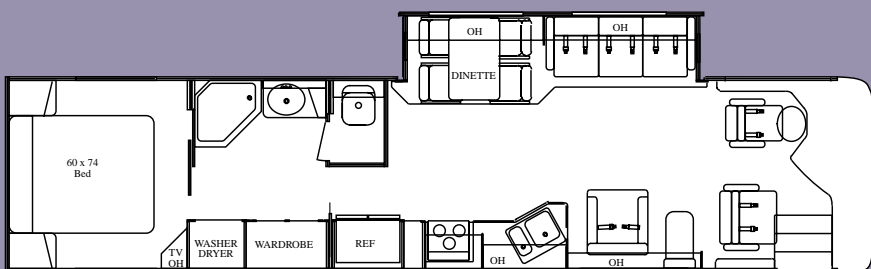


Escaper 2000's raised-rail chassis design helps set a new standard in basement storage. The cargo space is huge! Not only can you take more of your favorite gear with you, it'll be well protected too. The storage area features strong, yet lightweight baggage doors. These doors are large and swing open wide, allowing you easy access to the interior. As an added convenience, the storage compartments are lighted.

FLOOR PLANS

MODEL 3970

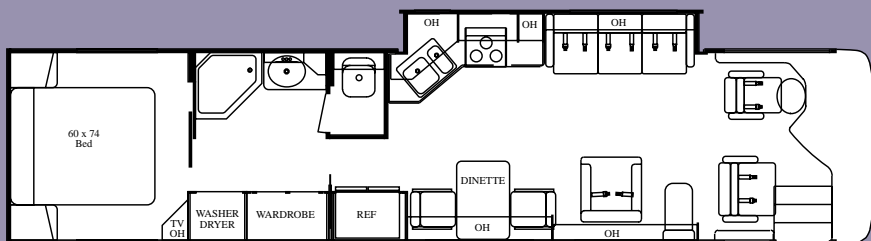
Raised-Rail Chassis	Freightliner	Spartan
Wheelbase	242"	242"
GVWR (lbs.)	27,410	27,410
GCWR (lbs.)	32,410	37,410
Fuel tank (gal.)	100	100
Overall length	39'	39'
Overall height with A/C	12' 3"	12' 6"
Width	100"	100"
Fresh Water System (appx. gal.)	100	100
Grey Water (appx. gal.)	53	53
Black Water (appx. gal.)	53	53
Sleeping Capacity	5	5
LP Gas Capacity (appx. lbs.)	100	100



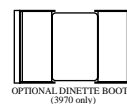
Dinette/sofa slideout • Neo-angle shower • Oversized wardrobe
Washer/dryer ready • Free-standing dinette

MODEL 3980

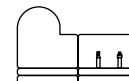
Raised-Rail Chassis	Freightliner	Spartan
Wheelbase	242"	242"
GVWR (lbs.)	27,410	27,410
GCWR (lbs.)	32,410	37,410
Fuel tank (gal.)	100	100
Overall length	39'	39'
Overall height with A/C	12' 3"	12' 6"
Width	100"	100"
Fresh Water System (appx. gal.)	100	100
Grey Water (appx. gal.)	53	53
Black Water (appx. gal.)	53	53
Sleeping Capacity	5	5
LP Gas Capacity (appx. lbs.)	100	100



Kitchen slideout • Neo-angle shower • Oversized wardrobe
Washer/dryer ready • Free-standing dinette



OPTIONAL DINETTE BOOTH
(3970 only)



OPTIONAL F-LOUNGER

PAINT PACKAGES



Jade Stone



Misty Jade



Antique Bronze

SPECIFICATIONS

	3970	3980
COCKPIT		
Driver's seat: Ultra leather, 6-way power	S	
Passenger seat: Ultra leather, buddy-style	S	
Passenger seat: Ultra leather, buddy-style 6-way power	O	
Vinyl-touch molded dash	S	
Burl instrument panel	S	
Full instrumentation	S	
Dash fans	S	
Map lights	S	
Electronic cruise control	S	
Power steering	S	
Douglas tilt/telescoping steering column	S	
18" V.I.P. steering wheel	S	
Tinted wrap-around windshield	S	
Windshield privacy wrap	S	
Rosen full-size sun visors	S	
Forward mount power mirrors	S	
Back-up monitor system	S	
VA70 GPS/Audio with monitor	O	
Floor mats	S	

	3970	3980
BATHROOM		
Solid-surface countertop	S	
Medicine cabinet with mirrored hardwood-framed door	S	
Power vent	S	
Porcelain toilet with sprayer	S	
Shower with easy-clean surround	S	
Skylight	S	
Wallpaper border	S	

	3970	3980
LIVING AREA		
Hide-a-bed: Cloth (not available with J-lounger)	S	N/A
Hide-a-bed: Ultra leather (not available with J-lounger)	O	N/A
Sofa bed: Cloth	O	S
Sofa bed: Ultra leather	O	O
J-lounger: Cloth*	O	O
J-lounger: Ultra leather*	O	O
Extra large recliner with footrest: Cloth	S	S
Extra large recliner with footrest: Ultra leather	O	O
Oak lounge table (not available with J-lounger)	S	S
Day/night shades	S	S
19" color TV with remote, antenna, booster and jack	S	S
Video package (control center & VCR)	S	S
DSS satellite prep	S	S
Web TV with Internet access*	O	O
AM/FM/CD stereo with CD changer	S	S
Masterworks™ audio system	S	S
Masterworks audio/visual upgrade	O	O
Fantastic vent	S	S
Fluorescent lighting	S	S
100% continuous-filament nylon carpeting with hand-carved insert	S	S

*Sofa bed mandatory in 3970

	3970	3980
KITCHEN		
Dinette: free-standing with 2 chairs	S	
2 extra folding dining chairs	O	
Dinette: Booth (not available on 3980)	O	
Refrigerator: large double-door with solid wood front	S	
Refrigerator: side-by-side with icemaker	O	
Solid-surface countertops	S	
Double-bowl sink	S	
Two solid-surface sink covers	S	
Faucet with sprayer	S	
Full-size pantry (not available with side-by-side refrigerator)	S	
Raised-panel hardwood cabinet doors	S	
Lined overhead cabinets	S	
3-burner range and oven	S	
Folding range cover	S	
Microwave/convection oven	S	
Fire extinguisher	S	
Wall mount monitor panel with LPG readout	S	
Micro-mini blind	S	

	3970	3980
BEDROOM		
Pillowtop sleep-well mattress 60"x74"	S	
Bedspread with pillow shams and toss pillows	S	
Diamond-beveled mirror with designer headboard	S	
13" color TV	S	
TV cabinet and jack	S	
AM/FM stereo	S	
Jalouise windows	S	
Micro mini-blinds	S	
Boxed window treatments	S	
Pin-up lights	S	
Wardrobe lights	S	
Carpet-lined wardrobe with mirrored front	S	

	3970	3980
CHASSIS		
Freightliner raised-rail chassis with 300 hp Caterpillar diesel with 860 ft. lb. torque	S	
Spartan mountain master raised-rail chassis with 330 hp diesel engine with side-mounted radiator and independent front suspension	O	
Allison MD-3060 automatic transmission - 6 speed	S	
Air suspension system	S	
In-block engine heater	S	
Alternator: Leece Neville 160-amp, 12-volt	S	
Full air brakes with auto slack adjusters, front and rear	S	
Wabco antilock brakes	S	
Jacobs exhaust brake	S	
Hadley air horns	S	
Bilstein shock absorbers, front and rear	S	
Midland Pure-Air-Plus heated air dryer	S	
Dual fuel fills	S	
Mud flaps (front and rear)	S	
22.5" radial tires	S	
Alcoa wheels	S	
Trailer hitch	S	

	3970	3980
EXTERIOR		
Molded fiberglass sidewalls	S	
Custom paint and graphics	S	
Aerodynamic front fiberglass cap	S	
Aerodynamic rear fiberglass cap	S	
Large white-trimmed windows	S	
Dual-pane windows	O	
Radius-corner domed roof	S	
Roof vents	S	
Rubber roof	S	
Custom-design front entry door with screen	S	
Bus-style front-mounted power mirrors	S	
Awning rail	S	
Side-mount patio awning	O	
Front door awning	O	
Leveling jacks	S	
Underhood light	S	
Porch lights on street and curb side	S	
Fog lights	S	
Pass-through basement storage	S	
Lighted storage compartments	S	
Locking exterior storage compartments	S	
Gas pistons on exterior storage doors	S	
Sewer hose storage	S	

	3970	3980
UTILITIES		
Air conditioner: 13.5 BTU ducted central front and rear	S	
Air conditioner: Low profile 13.5 BTU front and rear (not available with 5W solar charger)	O	
Furnace: 35M BTU electronic ignition floor-ducted	S	
Battery disconnect	S	
Dual 6-volt auxiliary batteries	S	
Generator: 6.5 K.W. Onan LP	S	
Generator: 7.5 K.W. Onan QC (diesel)	O	
Second generation automotive-style wiring harness	S	
50-amp, 120-volt service	S	
50-amp, 120-volt detachable power cord	S	
55-amp, 12-volt power converter	S	
400W entertainment inverter	S	
5W chassis solar battery charger	S	
2000W inverter with extra batteries	O	
60W solar panel for house batteries	O	
Exterior GFCI receptacle	S	
Exterior shower	S	
Cable TV hookup	S	
Telephone hookup	S	
City water hookup	S	
12-volt demand water pump	S	
Water heater by-pass kit	S	
6-gallon gas water heater w/electronic ignition	S	
Washer/dryer prep	S	
Washer/dryer	O	
Enclosed heated potable water and holding tanks	S	
Carbon monoxide detector	S	
LP gas detector	S	
Smoke detector	S	

S = Standard O = Optional N/A = Not Available

The Microsoft® Web TV Network™ service is available as a local call in most areas. Toll charges may apply. Web TV, Web TV Network, WebPIP, and the Web TV logo are either trademarks or registered trademarks of Microsoft Corporation in the United States and/or other countries. Monthly service subscription required.

Due to constant product improvements, the specifications, component parts and standard/optional equipment are subject to change without notice or obligation. Product photography or diagrams may show equipment that is optional. Damon Corporation reserves the right to make changes in prices and models and to discontinue models without notice or obligation. Components, parts or chassis may have been manufactured at times other than the model year indicated. All capacities are approximate and dimensions are nominal. All dry weights are based on standard model features and do not include optional features or equipment. Various RV components and features may differ to conform to local codes.

Damon
Value by Design



RVIA



Your Escaper dealer:

Damon Corporation • P.O. Box 2888 • Elkhart, IN 46515 • 800-577-5692
www.DamonRV.com