

CHALLENGER 2000 MOTORHOME

Designed to pamper you, and your wallet.



Damon
Value by Design

*A NEW CENTURY.
A NEW MILLENNIUM.
AND A NEW STANDARD FOR
VALUE IN COMPETITIVELY
PRICED MOTORHOMES:*

CHALLENGER 2000

Imagine: a full-basement, wide-body motorhome loaded with luxuries yet tastefully styled ... and priced for a song. Well, okay, some songs are actually pretty expensive these days. Challenger 2000 motorhomes aren't. You'll sing for joy when you see how beautifully one suits your needs and your budget.

Included in Challenger's wide range of amenities are:

- Spacious, thoughtfully laid out floor plans that give you plenty of room to maneuver
- A warm, inviting, home-style decor in three coordinated color choices: Saturn Swirl, Venus Mist and Neptune Moon
- Rich wood cabinetry and trimwork
- A decorative wallpaper border in the kitchen
- Abundant storage space inside and out — note the kitchen and bedroom, especially
- Practical designer details, such as a storage rack above the entrance door
- A plush sofa of 68" or longer
- An extra swivel chair in the living room
- A spacious dinette with decor-coordinated upholstery
- Standard day/night shades for added privacy
- Decorator window treatments with smart, fabric-covered lambrequins and decorator valances

Damon
Value by Design





Model 330 ■ Venus Mist Decor ■ Light Oak



Model 335 ■ Saturn Swirl Decor ■ Pearwood



- Large windows for optimum visibility, ventilation and light
- Damon's exclusive StepSaver™ kitchen, designed to speed and simplify meal preparation
- Attractive plank flooring in the kitchen
- A decor-coordinated kitchen countertop

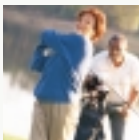
- Space-adding slideouts that feature Damon's ingenious "invisible floor": no carpet seam, no step up, nothing to trip over
- A privacy-enhancing cockpit windshield curtain
- Outside, a standard awning that essentially gives you a 160-square-foot patio



CHALLENGER 2000

- The peace of mind that comes from knowing your Challenger 2000 has passed Damon's strenuous 400-point StartRight Quality Assurance™ test — required before it could leave the manufacturing facility
- The benefits of TQS, Damon's ongoing Total Quality Service improvement initiative, designed to meet your needs on and off the road, wherever your Challenger 2000 takes you
- Damon's exclusive Comfort Control Center™ that keeps interior temperatures pleasant in any climate, year-round

Damon
Value by Design

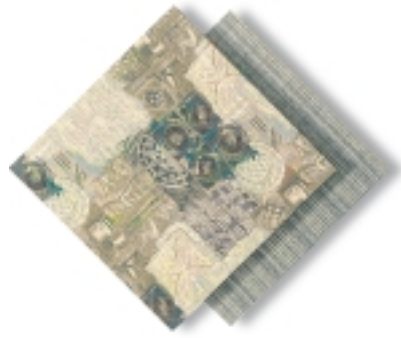




Saturn Swirl



Venus Mist



Neptune Moon



Pearwood (optional)

CHALLENGER 2000



- A large, easily accessible bathroom with a skylight over the shower
- An elegant master bedroom — featuring a queen-size bed with a mirrored headboard, a designer bedspread, matching window treatments and lots of practical, warm-looking cabinetry
- A “smart” electrical system consisting of two six-volt batteries that last twice as long as a single 12-volt battery, a battery control system that maximizes the charge whether you’re on the road or camped, a solid-state converter that eliminates transformer hum, and wiring that’s harnessed throughout for improved dependability and easy maintenance

WARRANTY INFORMATION:

One-piece rubber roof - 12 years

Awning - 5 years

Water heater - 2 years

Range - 2 years

Refrigerator - 2 years

Gas sensor - 2 years

Generator - 3 years

Power converter - 2 years

Everything else - 1 year

PAINT PACKAGES



Light Oak
(standard)



Dark Green



Light Green



Light Antelope

THE VALUE IS BUILT IN

CHALLENGER 2000

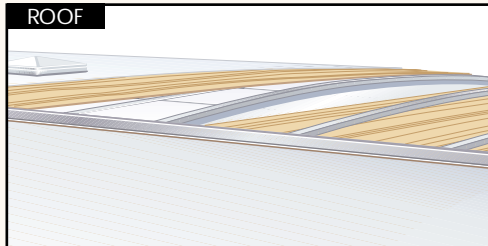
Challenger 2000s are the product of advanced engineering, computer-aided design and innovative manufacturing technologies. You can see the difference that makes. No other motorhomes in their class offer so impressive a combination of beauty, brawn and benefits.

- 1 - Pantographic, dual-arm windshield wipers that ensure top visibility in adverse weather
- 2 - A sleek, stylish, fully integrated fiberglass front cap
- 3 - Standard power mirrors for added safety and convenience
- 4 - Computerized wheel alignment that helps provide a safe, trouble-free ride
- 5 - A super-convenient, electrically operated exterior entrance step, standard
- 6 - A 105-pound propane tank that allows extended usage with fewer refills
- 7 - Great-looking, corrosion-resistant stainless steel wheel liners
- 8 - A standard 13,500-BTU central air conditioner that efficiently distributes cool air
- 9 - Standard ceiling vents that provide ventilation throughout the coach
- 10 - A standard aluminum roof ladder that permits easy access to roof storage
- 11 - A fully integrated, aerodynamic rear fiberglass cap
- 12 - A standard spare tire
- 13 - A standard exterior shower (in the utility hookup compartment) featuring hot and cold running water — perfect for hosing off dirty feet or for cleaning gear before you come inside
- 14 - One compartment to house the holding tanks and the water tank, both of which are heated by a furnace for worry-free extended seasonal use; all water stays in the same general location, so the motorhome's weight distribution isn't upset as the water is used
- 15 - Damon's electric, gear-driven slideout system with smooth, simple, push-button operation

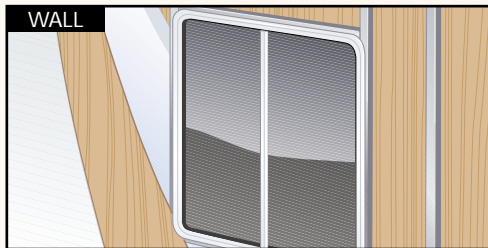


In every Challenger 2000 motorhome, you'll find an amazing amount of storage space — so you can pack all your favorite gear. Consider our underfloor, exterior-access storage compartments. Most of them have 22"-high

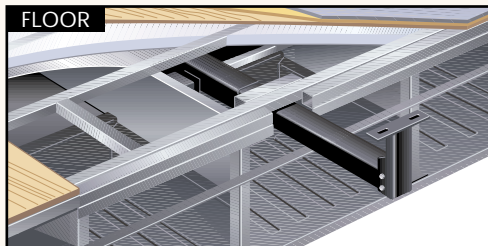
openings outside the main rails and 12" pass-through areas. Better yet, there's a 50-cubic-foot rear trunk with a pass-through area that's roughly 29" high and 32" wide. All these compartments are made of rugged rotocast polyethylene for easy cleaning. They're framed in steel, too, for extra durability and the best possible water seal. And the openings have no exposed fasteners. Other features include interior lighting that's operated by a switch near the motorhome's entry door; sturdy yet lightweight insulated baggage doors; paddle-shaped door handles that give you a good grip; and automotive-style latches that keep the doors shut. One-way kazoo valves in every storage compartment allow thorough cleaning; water drains right out.



Challenger 2000's seamless, one-piece EPDM rubber roof comes with a full 12-year warranty. It's specially formulated not only to withstand the elements, but to provide excellent thermal and acoustical insulation. Radius corners allow proper water runoff. For additional strength, the roof is crowned. It features an extruded aluminum frame, lauan decking and highly energy efficient block-foam insulation.



The IceWhite® exterior of Challenger 2000 is made of smooth, durable, easy-to-maintain fiberglass, vacuum-bond laminated in one piece. For added strength and protection against leaks, all window and door perimeters are aluminum framed. Expanded polystyrene block-foam insulation — 1-1/2" in the floor and sidewalls — increases the coach's energy efficiency and helps dampen sound.



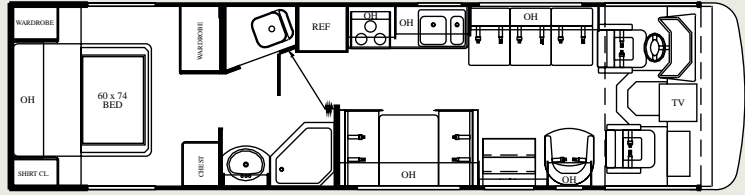
Like all Damon RVs, Challenger 2000 has one of the safest, most substantial foundations in the industry. It features, among other things, 13"-deep, heavy-duty, 14-gauge steel crossmembers with an I-shaped member welded to each end for maximum vertical strength. Undercoating and a foam seal act as additional barriers to the elements. To reduce the transmission of chassis noise and vibration to the coach, a neoprene gasket isolates the frame from the steel chassis platform. Seamless, one-piece decking further reduces squeaks and road noise. High-quality residential carpeting and padding tops it all off, providing exceptional comfort and insulation.



FLOOR PLANS

MODEL 310

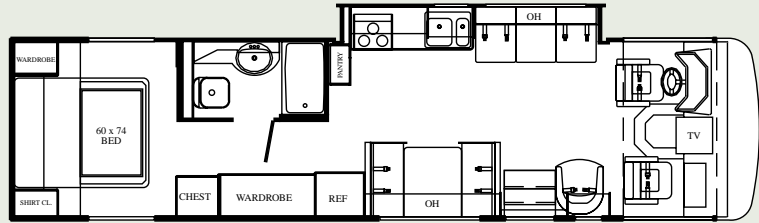
Chassis	Workhorse
Wheelbase	216.5"
GVWR (lbs.)	16,500
GCWR (lbs.)	21,000
Overall length	33' 6"
Overall width	102"
Overall height with A/C	11' 7"
Fresh water system (appx. gal.)	75
Grey water (appx. gal.)	50
Black water (appx. gal.)	50
LP (lbs.)	105
Fuel capacity (gal.)	80
Sleeping capacity	4



Walk-thru bath • Neo-angle shower
Excellent bedroom storage • Seats 8 with safety belts

MODEL 330*

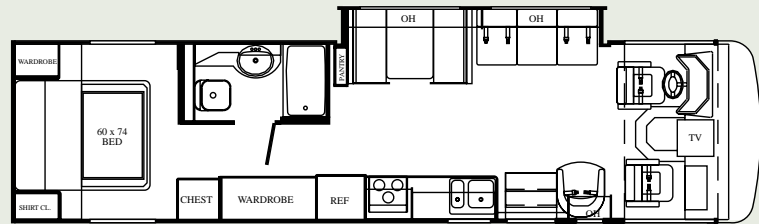
Chassis	Ford
Wheelbase	216.5"
GVWR (lbs.)	18,000
GCWR (lbs.)	26,000
Overall length	35'
Overall width	102"
Overall height with A/C	11' 7"
Fresh water system (appx. gal.)	75
Grey water (appx. gal.)	50
Black water (appx. gal.)	50
LP (lbs.)	105
Fuel capacity (gal.)	75
Sleeping capacity	4



Slideout kitchen • Floor plan still functional with slideout closed
Large wardrobe • Pantry

MODEL 335*

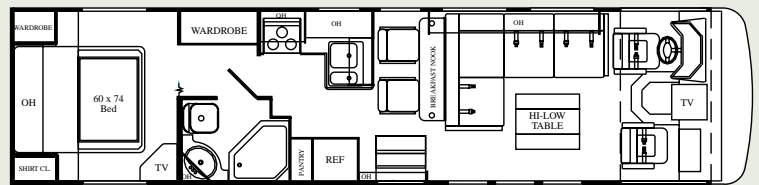
Chassis	Ford
Wheelbase	216.5"
GVWR (lbs.)	18,000
GCWR (lbs.)	26,000
Overall length	35'
Overall width	102"
Overall height with A/C	11' 7"
Fresh water system (appx. gal.)	75
Grey water (appx. gal.)	50
Black water (appx. gal.)	50
LP (lbs.)	105
Fuel capacity (gal.)	75
Sleeping capacity	4



Slideout dinette/sofa • Sofa bed
Large wardrobe • Pantry

MODEL 352*

Chassis	Ford
Wheelbase	216.5"
GVWR (lbs.)	20,500
GCWR (lbs.)	26,000
Overall length	N/A
Overall width	102"
Overall height with A/C	11' 7"
Fresh water system (appx. gal.)	100
Grey water (appx. gal.)	50
Black water (appx. gal.)	50
LP (lbs.)	105
Fuel capacity (gal.)	75
Sleeping capacity	4



L-shaped sofa • Neo-angle shower
Large wardrobe • Pantry

*Workhorse chassis available beginning November, 1999

SPECIFICATIONS

CHALLENGER BUS ENTRY	310	330	335	352
Integrated entrance step	S	S	S	S
Electric entrance step	S	S	S	S
Interior entry-assist handle	S	S	S	S
Deadbolt door lock	S	S	S	S
Storage in stairwell	S	S	S	S
Battery access in stairwell	S	S	S	S

CHALLENGER BUS CHASSIS	310	330	335	352
4-speed auto transmission with overdrive	S	S	S	S
Layer of neoprene vibration dampener	S	S	S	S
Front and rear mud flaps	S	S	S	S
Radial tires	S	S	S	S
Spare tire	S	S	S	S
Stainless steel wheel liners	S	S	S	S
Leveling jacks	O	S	S	O
Hitch	S	S	S	S
Underhood light	S	S	S	S
Emergency-start circuit	S	S	S	S
Wide-body design	S	S	S	S

SPECIFICATIONS

CHALLENGER BUS COCKPIT	310	330	335	352
Captain's chairs: reclining swivel	S	S	S	S
Captain's chairs: ultra leather (set of 2)	0	0	0	0
Padded-vinyl dash with ABS instrument pod	S	S	S	S
Burl instrument panel	S	S	S	S
Full instrumentation	S	S	S	S
Dash fans	S	S	S	S
Electronically controlled dash air-conditioning	S	S	S	S
Map lights	S	S	S	S
Drink tray	S	S	S	S
Cruise control	S	S	S	S
Power steering	S	S	S	S
Tilt steering wheel	S	S	S	S
Driver's door with slider window	0	0	0	0
Tinted wraparound windshield	S	S	S	S
Windshield privacy drape	S	S	S	S
Sun visors	S	S	S	S
Protector sun visors	0	0	0	0
Side-mount power mirrors	S	S	S	S
Backup monitor system	0	0	0	0
AM/FM cassette stereo	S	S	S	S
Floor mats	S	S	S	S

CHALLENGER BUS EXTERIOR	310	330	335	352
Aerodynamic front and rear fiberglass caps	S	S	S	S
Contoured front integrated bumper	S	S	S	S
Smooth fiberglass exterior	S	S	S	S
Deluxe graphics	S	S	S	S
Laser stripe	S	S	S	S
Paint package	0	0	0	0
White frame radius-corner slider windows	S	S	S	S
Dual-pane windows	0	0	0	0
Radius-corner domed roof	S	S	S	S
Roof vents	S	S	S	S
Rubber roof	S	S	S	S
Roof rack	S	S	S	S
Roof ladder	S	S	S	S
White trimmed, radius-top entrance door	S	S	S	S
Entry-assist grab handle	S	S	S	S
Awning rail	S	S	S	S
Side-mount patio awning*	S	S	S	S
Side-mount awning over slideout	N/A	S	S	N/A
Full basement pass-through storage	S	S	S	S
Easy-to-clean, lighted rotocast storage compartments	S	S	S	S
Storage compartment locks	S	S	S	S
Sewer hose storage	S	S	S	S
Porch light	S	S	S	S
Fog lights	0	0	0	0

*Awnings not available on units sold in Canada

CHALLENGER BUS LIVING AREA	310	330	335	352
Sofa bed	S	S	S	S
L-shaped sofa	N/A	N/A	N/A	S
Barrel chair(s)	S	S	S	N/A
19" color TV with full-function remote in dash with antenna booster and jack	S	S	S	S
Video package (VCP and control center)	0	0	0	0
Decorator clock and mirror	S	S	S	S
Day/night shades throughout	S	S	S	S
Lambrequin window treatments	S	S	S	S
Carpeting with pad	S	S	S	S

S = Standard 0 = Optional N/A = Not Available

CHALLENGER BUS KITCHEN	310	330	335	352
Booth dinette with padded top	S	S	S	N/A
Refrigerator - flush-mount double-door	S	S	S	S
Refrigerator - large flush-mount double-door	0	0	0	0
Refrigerator - solid-wood front*	0	0	0	0
Woodtone, T-mold countertops	S	S	S	S
Double-bowl composite sink (1 bowl oversized)	S	S	S	S
Sink cover	S	S	S	S
Pantry	N/A	S	S	S
Cutlery drawer	N/A	N/A	S	N/A
Solid-wood cabinet doors throughout	S	S	S	S
3-burner range and oven	S	S	S	S
Folding range cover	S	S	S	S
Lighted power range hood with monitor panel (including LPG readout)	S	S	S	S
Microwave oven	S	S	S	S
Wood-plank flooring*	S	S	S	S
Fire extinguisher	S	S	S	S
Fantastic® power vent	0	0	0	0
Mini blind	S	S	S	S

*Light Oak or Pearwood

CHALLENGER BUS BEDROOM	310	330	335	352
Innerspring mattress (60"x74")	S	S	S	S
Upgrade innerspring mattress	0	0	0	0
Bedsread and headboard	S	S	S	S
13" TV	0	0	0	0
TV area and jack	S	S	S	S
Jalousie windows	S	S	S	S

CHALLENGER BUS BATHROOM	310	330	335	352
Tub or shower with surround	S	S	S	S
Shower door	S	S	S	S
Skylight in tub or shower	S	S	S	S
Medicine cabinet with solid-wood door and mirror	S	S	S	S
Foot-flush toilet	S	S	S	S
Power vent	S	S	S	S
Woodtone, T-mold countertops	S	S	S	S

CHALLENGER BUS UTILITIES	310	330	335	352
Front air conditioner: 13,500-BTU ducted central	S	S	S	S
Front air conditioner: 15,000-BTU ducted central upgrade	0	0	0	0
Rear air conditioner: 11,000-BTU ducted central	0	0	0	0
Wall-mount thermostatically controlled air-conditioning	0	0	0	0
Furnace: 35,000-BTU electronic ignition with in-floor ducting	S	S	S	S
Generator: Onan 5.0 kw	0	0	0	0
Generator: Onan 6.5 kw	0	0	0	0
Wire for generator with auto changeover	S	S	S	S
Battery disconnect	S	S	S	S
Dual 6-volt auxiliary batteries	S	S	S	S
Electronic battery distribution center	S	S	S	S
Harness 12-volt wiring	S	S	S	S
30-amp, 120-volt service	S	S	S	S
Solid-state, 45-amp, 12-volt power converter	S	S	S	S
Cable TV/satellite hookup	S	S	S	S
Telephone hookup	0	0	0	0
Exterior GFCI receptacle	S	S	S	S
Exterior shower	0	0	0	0
City water hookup	S	S	S	S
12-volt demand water pump	S	S	S	S
Water heater bypass kit	S	S	S	S
6-gallon gas water heater with electric ignition	S	S	S	S
Enclosed heated potable water and holding tanks	S	S	S	S
Carbon monoxide detector	S	S	S	S
LP gas detector	S	S	S	S
Smoke detector	S	S	S	S



Damon
Value by Design



Your Challenger dealer:

Damon Corporation • P.O. Box 2888 • Elkhart, IN 46515
219-389-0179 • 800-577-5692
www.DamonRV.com

Due to constant product improvements, the specifications, component parts and standard/optional equipment are subject to change without notice or obligation. Product photography or diagrams may show equipment that is optional. Damon Corporation reserves the right to make changes in prices and models and to discontinue models without notice or obligation. Components, parts or chassis may have been manufactured at times other than the model year indicated. All capacities are approximate and dimensions are nominal. All dry weights are based on standard model features and do not include optional features or equipment. Various RV components and features may differ to conform to local codes.

DC 9/99 ©1999 Damon Corporation Printed in U.S.A.