

1999 ULTRASPORT DIESEL

Now you're going places



*Damon*  
Value by Design

# 1 U

## MOVING UP

You're no novice. You're an RV vet. And now you're ready for the ultimate RV experience: a diesel pusher motorhome. Think of it. The performance. The mileage. The luxury. Of course, you've thought about the hefty price tag too. But think again. Damon's Ultrasport gives you all the benefits of a grand diesel pusher for a fraction of what other manufacturers charge. Chalk it up to Damon value — and savor it completely in features like these:

- Exceptionally roomy, open floor plans that let you stretch out and relax
- A space-adding Super Slideout in model 3670 — it features a freestanding hide-a-bed couch and dinette, both of which can be rearranged a number of ways to suit your lifestyle; ample overhead storage; and decor-enhancing mirrored fascia with oak trim
- A choice of tasteful, upscale decor packages — Cotswold, Buckingham or Ashbury
- Elegant residential-style lighting
- Abundant storage space — why leave anything behind? Ultrasport lets you bring it all
- Solid-wood cabinet ends for long-lasting beauty

Model 3670 • Cotswold decor • Pearwood





- Cathedral-cut, raised-panel solid-wood cabinet doors
- Solid-brass pulls on every door and drawer
- Fabric-lined overhead cabinets — to reduce interior noise during travel
- Plush, comfortable living room seating, including a barrel chair with a footrest and, in model 3590, a 72" sofa with a large storage area underneath
- Designer pillows
- A 19" overhead-mounted color TV, standard, with full-function remote, antenna, booster and jack
- Large windows all around for optimum visibility, ventilation and light
- A huge Euro-styled wraparound windshield, tinted to reduce glare
- Standard day/night shades throughout for extra privacy
- Elegant window treatments — including smart, contemporary, fabric-covered lambrequins and decorator valances
- A lined windshield drape for extra privacy and sound dampening
- A unique StepSaver™ kitchen — thoughtfully laid out to make meal preparation quick and easy; among its many standards are a big, solid-wood-front, double-door refrigerator; a three-burner range and oven; a carousel-style convection microwave; a coffee maker; double metal drawer guides; a cutlery drawer; a porcelain double-bowl sink that resists stains, scratches, dents and heat; a solid-surface sink cover that increases your countertop space; and a solid-surface, decor-coordinated countertop that's as easy to clean as it is on the eyes
- Stunning hardwood plank flooring in the kitchen area

Model 3670 • Cotswold decor • Pearwood



- # 1 U a
- An absolutely gorgeous bedroom designed not just for beauty but for unsurpassed comfort; its features include rich wood cabinetry and trim; decorator lighting; a queen-size bed with a diamond-beveled headboard mirror; a plush pillowtop mattress; a decor-coordinated designer bedspread with pillow shams and throw pillows; and a spacious carpet-lined wardrobe with a mirrored front and interior lights
  - A fully appointed bathroom complete with beautiful cabinetry; a wood-framed, mirrored medicine cabinet; an attractive wallpaper border; a solid-surface, decor-coordinated countertop; a porcelain toilet with a sprayer; a power ceiling vent; and a full-height fiberglass shower with a door and a built-in skylight for greater brightness and a more open, airy feeling
  - Supreme comfort in any climate, year-round, thanks to Ultrasport's exclusive Comfort Control Center™
  - Seamless, one-piece 1/2" floor decking throughout the living area to reduce squeaks and road noise
  - A European-inspired cockpit design that envelopes you with comfort and puts you firmly in control of unbelievable power
  - An electronic rear-view monitor system that helps you back up safely and easily
  - Exceptionally strong yet lightweight aluminum body framing
  - 1-1/2" (minimum) expanded polystyrene block-foam insulation in the roof, walls and floor to increase energy efficiency and dampen sound
  - Solid-foam insulation in the domed roof to keep water from accumulating on your Ultrasport
  - Fully integrated front and rear fiberglass caps — with easy access in the rear to your diesel engine
  - The peace of mind that comes from knowing that your Ultrasport has passed a strenuous 400-point inspection test as part of Damon's StartRight Quality Assurance™ program
  - The benefits of TQS, Damon's exclusive Total Quality Service initiative — an example of the company's continuous improvement efforts; ask your dealer for details

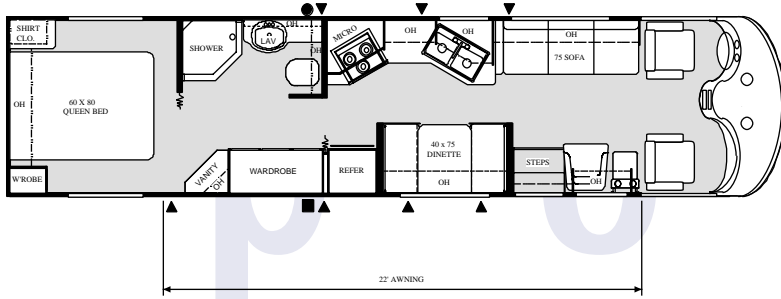
Model 3670 • Cotswold decor • Pearwood



# FLOOR PLANS

▲ = Under floor storage  
● = Exterior wash down kit

3590

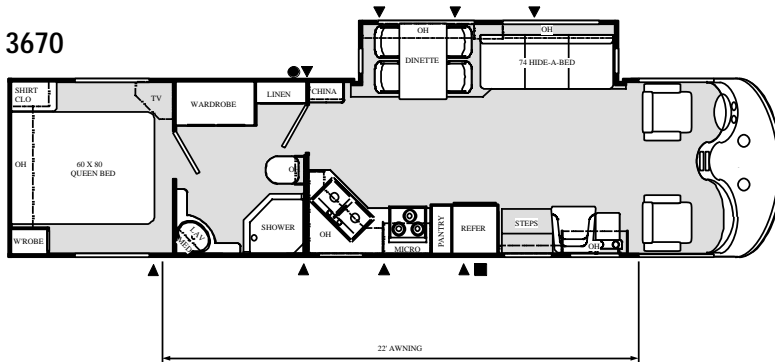


Features: Neo-angle shower • Full 80" queen bed • Oversized wardrobe  
• Vanity in bedroom • Spacious kitchen

Model 3590

Options	A
Chassis	Freightliner
Wheelbase	228"
GVWR (lbs.)	26,350
Fuel tank	90 gal.
Overall length	36'8"
Overall height with A/C	12'
Width	100"
Fresh Water System (appx. gal.)	97
Grey Water (appx. gal.)	53
Black Water (appx. gal.)	53
Sleeping Capacity	4
LP Gas Capacity (appx.)	160 lbs./31gal.

3670



Features: Super Slideout room • Neo-angle shower • China cabinet  
• Linen closet • Washer/dryer option available

Model 3670

Options	B
Chassis	Freightliner
Wheelbase	228"
GVWR (lbs.)	26,350
Fuel tank	90 gal.
Overall length	36'8"
Overall height w/A/C	12'
Width	100"
Fresh Water System (appx. gal.)	97
Grey Water (appx. gal.)	53
Black Water (appx. gal.)	53
Sleeping Capacity	3
LP Gas Capacity (appx.)	160 lbs./31gal.

Options



Option A



Option B

## WARRANTY INFORMATION

One-piece rubber roof - 12 years	Refrigerator - 2 years
Awning - 5 years	Gas sensor - 2 years
Water heater - 2 years	Generator - 3 years
Range - 2 years	Power converter - 2 years
	Everything else - 1 year

## PAINT PACKAGES

Green



Buff



Cream



# SPECIFICATIONS

	3590	3670
<b>Cockpit</b>		
Ultra leather captain's chairs	S	S
Reclining swivel captain's chairs	S	S
Power 6-way driver's seat	S	S
Molded dash	S	S
Dash fans	S	S
Map lights	S	S
Electronic cruise control	S	S
Floor mats	S	S
Full instrumentation	S	S
Hardwood drink tray	S	S
Power steering	S	S
Protector® sun visors	S	S
Lined windshield privacy drape	S	S
Tinted wraparound windshield	S	S
Douglas tilt/telescoping steering column	S	S
18" VIP steering wheel	S	S
Back-up monitor system	S	S

	3590	3670
<b>Kitchen</b>		
Refrigerator – side-by-side	N/A	0
Refrigerator with icemaker	0	0
Refrigerator – solid-wood front**	S	S
Refrigerator – large double-door	S	S
Solid-surface countertops	S	S
3-burner range and oven	S	S
Folding range cover	S	S
Microwave convection	S	S
Double-bowl, porcelain sink	S	S
Two solid-surface sink covers	S	S
Faucet/sprayer upgrade	S	S
Hardwood plank flooring**	S	S
Lighted power range hood with monitor panel (includes LPG readout)	S	S
Coffeemaker	S	S
Dustbuster	S	S
Solid-brass cabinet hardware	S	S
Hardwood cabinet doors**	S	S
Lined overhead cabinets	S	S
Mirrored backsplash behind stove	S	S
Mini blinds	S	S
Padded dinette top	S	S
Freestanding dinette	0	S
Pantry	N/A	S
Cutlery drawer	S	S

\* Awnings not available on 100" wide models in some locations. Check local regulations for applicable laws.

\*\* Light Oak or Pearwood

**S = Standard    0 = Optional    N/A = Not Available**

	3590	3670
<b>Exterior</b>		
50-amp service	S	S
Leveling jacks	0	S
Roof ladder	S	S
Roof vents	S	S
Rubber roof	S	S
Molded fiberglass sidewalls	S	S
Aerodynamic front fiberglass cap	S	S
Front fiberglass bumpers	S	S
Rear fiberglass cap	S	S
Automotive-style rear bumper	S	S
Under-hood light	S	S
Awning*	S	S
Clear-coat custom paint	S	S
Gas pistons on exterior storage doors	S	S
Lighted storage compartments	S	S
Locking pass-through storage compartments	S	S
Radius-corner domed roof	S	S
White-trimmed radius-top entrance door with dead-bolt lock	S	S
2 porch lights	S	S
Fog lights	S	S
Sewer hose storage	S	S
Awning over slideout roof	NA	S

	3590	3670
<b>Bathroom</b>		
Solid-surface countertops	S	S
Power vent in bath	S	S
Porcelain toilet with sprayer	S	S
Shower door	S	S
Shower with surround	S	S
Skylight	S	S
Medicine cabinet with mirrored hardwood-framed door	S	S
Wallpaper border	S	S

	3590	3670
<b>Living Area</b>		
Video package (control center & player)	S	S
Living room pin-up light	S	S
Day/night shades	S	S
Lounge table**	S	S
Barrel chair with footrest	S	S
Fantastic® power vent	S	S
Upgrade AM/FM/cassette with 10-CD changer	S	S
19" color TV with full-function remote in front overhead with antenna, booster and jack	S	S
Fluorescent lighting throughout	S	S
100% continuous-filament nylon carpeting with stain treatment & padding	S	S
Toolbox in stepwell	S	S
Dual pane windows	0	0





	3590	3670
<b>Bedroom</b>		
Queen-size bed	S	S
Bedsread with throw pillows	S	S
Diamond-beveled mirror with designer headboard	S	S
Queen pillowtop mattress	S	S
TV cabinet and jack	S	S
13" color TV	S	S
Pin-up lights	S	S
AM/FM stereo	S	S
Day/night shades	S	S
Lambrequin window treatments	S	S
Wardrobe lights	S	S
Carpet-lined wardrobe with mirrored front	S	S

	3590	3670
<b>Chassis</b>		
Forward-mount power mirrors	S	S
Mud flaps (4)	S	S
22.5" radial tires	S	S
Stainless steel wheel liners	S	S
Trailer hitch	S	S
Air horns	S	S
Full air brakes with auto slack adjusters front and rear	S	S
275HP Caterpillar engine with 800 ft. lb. torque	S	S
Allison MO-3060 automatic transmission – 6 speed	S	S
Air suspension deflation system	S	S
In-block engine heater	S	S
Leece Neville 160-amp, 12-volt alternator	S	S
Air-ride suspension	S	S
Bilstein shock absorbers, front and rear	S	S
Midland Pure-Air Plus heated air dryer	S	S

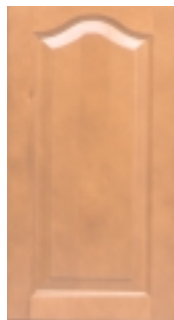
S = Standard    O = Optional    N/A = Not Available

\*\* Light Oak or Pearwood

	3590	3670
<b>Utilities</b>		
50-amp, 120-volt detachable power cord	S	S
50-amp, 120-volt power service	S	S
45-amp, 12-volt power converter	S	S
A/C: (2) 13.5-BTU low profile	S	S
Dash air-conditioning	S	S
Generator: Onan 6.5 LP with auto changeover	S	S
35M-BTU electronic ignition floor-ducted furnace	S	S
Second furnace	O	O
Telephone hookup	S	S
Water filtration system	S	S
City water hookup	S	S
12-volt demand water pump	S	S
Water heater by-pass	S	S
6-gal. gas water heater with electronic ignition	S	S
Enclosed and heated holding tanks	S	S
Emergency start circuit	S	S
Cable TV hookup	S	S
Battery disconnect	S	S
Dual 6-volt deep-cycle batteries	S	S
Carbon monoxide detector	S	S
LP gas detector	S	S
Smoke detector	S	S
Fire extinguisher	S	S
Exterior GFCI receptacle	S	S
Outside shower	S	S
Washer/dryer prep	NA	O
Washer/dryer	NA	O



Light Oak



Pearwood



FPO

Cotswold

FPO Pick up 98's  
Ultrasport fabric

Buckingham

FPO Pick up 98's  
Ultrasport fabric

Ashbury



*Damon*  
Value by Design

Your Ultrasport Diesel dealer:

Damon Corporation  
P.O. Box 2888  
Elkhart, IN 46515  
800-577-5692  
[www.DamonRV.com](http://www.DamonRV.com)



Due to constant product improvements, the equipment, specifications, component parts and standard/optional equipment are subject to change without notice or obligation. Product photography or diagrams may show equipment that is optional. Damon Corporation reserves the right to make changes in prices and models, and to discontinue models without notice or obligation. Components, parts, or chassis may have been manufactured at times other than the model year indicated. All capacities are approximate and dimensions are nominal. All dry weights are based on standard model features and do not include optional features or equipment.

DC 1/99 ©1999 Damon Corporation

Printed in U.S.A.