

1999 DAYBREAK MOTORHOMES

Now you're going places



*Damon*  
V l u y s n



1  
M

9 9 9 Day

3270 • Carnival decor • Pearwood

## *GRAND BEGINNINGS*

In your dreams you've owned a Class A motorhome. But only in your dreams. The real-world price is just too prohibitive. Or so you've thought. Truth is, your dream motorhome is here — at a dream of a price. Wake up to DayBreak!

This is one Class A that'll start you out right. Yes, it's incredibly affordable. But it's also an incredible value ... with an array of standard features and a flair for style unmatched by anything else in its price range. Just look at the list of what DayBreak has to offer:

3270 • Carnival decor • Pearwood



# DayBreak

- Exceptionally roomy, open floor plans that let you stretch out and relax — model 3270 even has a slideout that gives you up to 30 more square feet of living space, plus a booth dinette and a sofa
- Designer decor, evidenced in rich wood cabinet doors, understated wall coverings, and a choice of fashionable Calypso, Carnival or Fiesta fabric
- Interior details that truly refine your travel living, such as solid wood cabinet doors and trimwork available in Light Oak or Pearwood — not something you're likely to see in other, similarly priced motorhomes — and decorator touches like a standard cabinet-mounted clock and a standard wall mirror
- Abundant storage space — why leave anything behind? DayBreak lets you bring it all
- Large windows for optimum visibility, ventilation and light
- Elegant window treatments with decorator valances
- Optional mini blinds that offer extra privacy in the living room
- Supremely comfortable living room barrel chairs that swivel and a plush sofa with an extra-large storage compartment underneath

2740 • Calypso decor • Light Oak



3270 • Carnival decor • Pearwood

- A unique StepSaver™ kitchen — thoughtfully laid out to make meal preparation quick and easy; among its many standards are beautiful hardwood-crafted plank flooring, real wood cabinet doors, smooth-operating double-metal glides in all drawers, a big double-door refrigerator (available with optional raised-hardwood door fronts), a three-burner range, a microwave, a coffee maker, a European-styled, double-bowl sink that resists stains, scratches, dents and heat, and a decor-coordinated countertop
- A standard dinette that folds down to become an extra bed





- A warm, cozy, inviting bedroom with amenities more like a country inn's: rich cabinetry with plenty of storage space, a queen-sized bed with a designer bedspread that matches the window treatments, and a convenient nightstand shelf that slides out of the way when not needed
- A charming, fully appointed bathroom complete with beautiful cabinetry, a wood-framed, mirrored medicine cabinet, a decor-coordinated countertop, a fiberglass tub and shower surround, and a standard skylight over the shower for greater brightness and a more open, airy feeling
- Incredible comfort in any climate, year-round, thanks to Damon's exclusive Comfort Control Center™
- A standard side-mount awning that extends your living space into the Great Outdoors, providing cool shade on hot summer days

2470 • Calypso decor • Light Oak



3270 • Carnival decor • Pearwood



## CONSTRUCTION HIGHLIGHTS

From top to bottom, inside and out, DayBreak Motorhomes are super tough — and built for comfort.

Take our seamless, one-piece rubber roof. It not only blocks heat and weather damage, but cuts interior noise as well. Directly underneath it is one of the most solid laminated roof assemblies around. It consists of rugged lauan decking, expanded polystyrene block-foam insulation, three inches thick at the roof's center, and an incredibly strong, rigid aluminum frame.

You'll also like the way the exterior basement storage compartments are constructed. At the floorline, DayBreak's single-piece laminated wall stops. Below this point are hinged compartment doors that allow convenient access to each of the compartment areas. The doors are made of laminated fiberglass for extra strength and durability. Push-button locks make them easy to open, easy to secure.

## STORAGE, STORAGE ... AND MORE STORAGE

Veteran RVers know it. First-timers soon discover it. You can never have too much storage in an RV. DayBreak Motorhomes take it to the max.

In the kitchen of some models, for instance, we've converted the unused space under the sink into a handy silverware drawer.

Of course, that kind of ingenuity is evident throughout the interior — in beautiful, accommodating wardrobes and numerous overhead cabinets. There's even a big, easily accessible storage area under the queen bed.

Outside, you'll find big pass-through storage compartments that are perfect for lawn chairs, grills, bicycles and other large items. These compartments come with interior lights and are lined to keep cargo from rattling around.



## TAKE COMMAND OF THE ROAD

No doubt about it, the DayBreak is a lot of motorhome. But you wouldn't know that to drive it: It handles like a dream. In fact, it's one of the most driveable RVs on the road today. And that's due in no small measure to the comforts we provide in the cab.

The dashboard instruments are positioned for easy viewing and easy access. The driver and passenger seats not only provide maximum back support, they also swivel and recline, making it easier to get in and out of the cab (an optional driver's door is helpful in this regard too). And all the best "driveability" features are standard, such as an automatic transmission, cruise control, power steering, automotive-style heat and air-conditioning, and much more.

DayBreak also offers standard dash fans. They really come in handy when you defrost the windshield in cold or rainy weather. You can also use them to keep air circulating while you drive — to stave off summer heat or winter chill.

For added safety, you might consider the option of our backup monitor system. It lets you look directly behind your motorhome when you've got it in reverse. The monitor is mounted so you can watch it without losing sight of the sideview mirrors.



Here's a Damon feature that really saves you work: Our slideout rooms come with an awning. As the room slides out, the awning automatically unrolls to provide a sloping roof that allows water and debris to run off. No more climbing on the roof for cleanups.

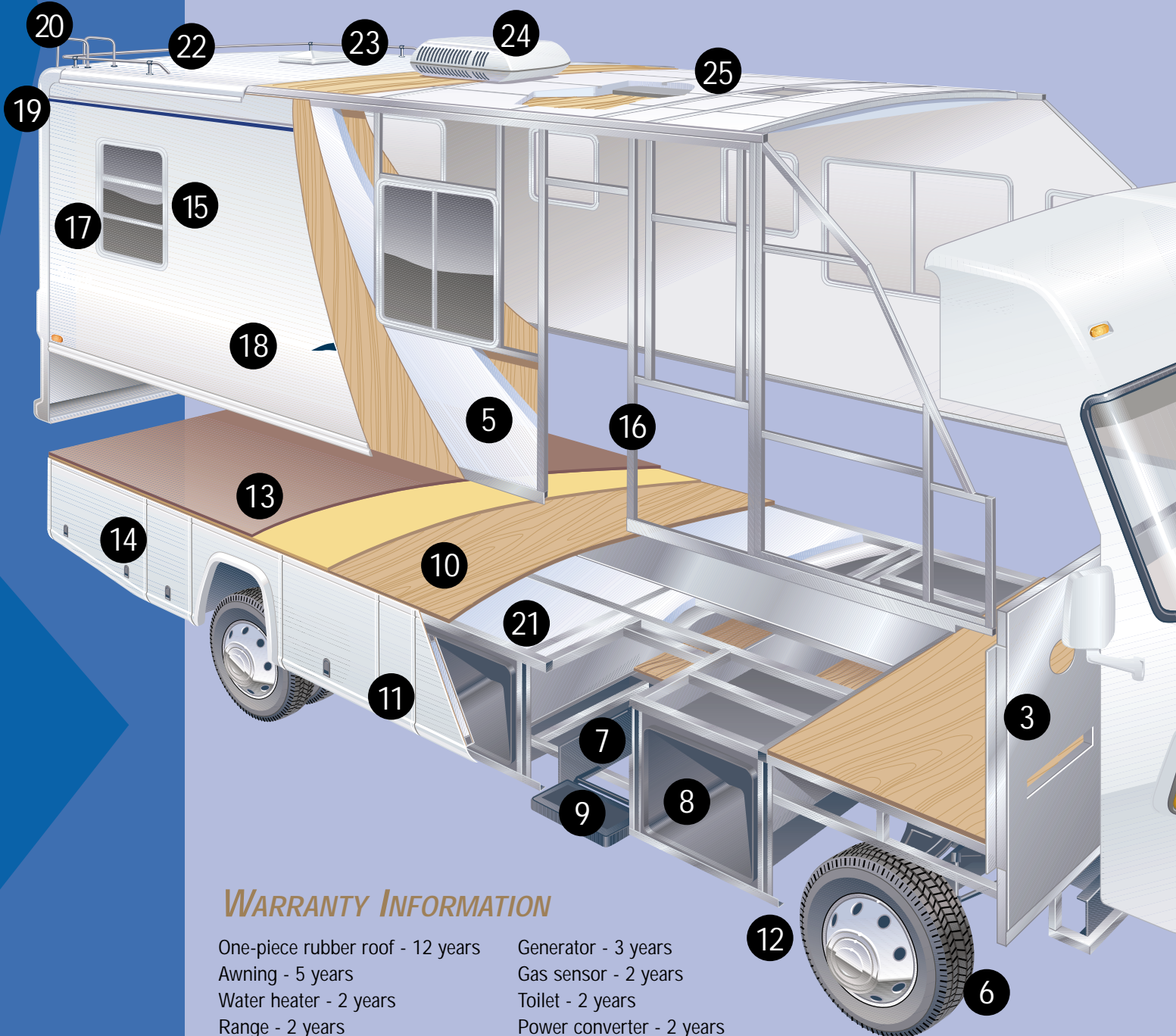
In our utility hookup compartment, you can add the bonus of an optional exterior shower featuring hot and cold running water. It's perfect for hosing off dirty feet or for cleaning gear before you come inside.



## BUILT TO ENDURE

Every DayBreak Motorhome, indeed, every Damon RV, benefits not only from our years of experience, but from modern, computer-aided design and innovative manufacturing technologies. They help us build products that last, products that retain their value over the years and miles.

Of course, it helps that DayBreaks offer so much value to begin with. Here, you'll find more standard features, more practical innovations, more storage and living space and more Designer Details™ than in any other motorhomes in their class. And the construction is absolutely first-rate. Features like those shown below make the difference.



## WARRANTY INFORMATION

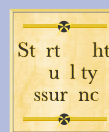
One-piece rubber roof - 12 years  
Awning - 5 years  
Water heater - 2 years  
Range - 2 years  
Refrigerator - 2 years

Generator - 3 years  
Gas sensor - 2 years  
Toilet - 2 years  
Power converter - 2 years  
Everything else - 1 year

# DayBreak



- 1 A sleek, aerodynamic, fully integrated front fiberglass cap
- 2 Pantographic, dual-arm windshield wipers that ensure greater visibility during adverse weather
- 3 A steel firewall for additional safety and strength at the front the motorhome
- 4 Large wrap-around turn signals that are clearly visible to other drivers
- 5 Full, 1-1/2" expanded polystyrene block-foam insulation in the sidewalls and floor for greater energy efficiency and sound dampening
- 6 Computerized wheel alignment that helps ensure a safe, smooth, trouble-free ride — part of Damon's 400-point StartRight Quality Assurance Program™
- 7 Heavy-duty steel trusses that are welded to the chassis for optimum strength
- 8 Fully lined and lighted exterior storage compartments
- 9 A steel entry step that provides sure footing and makes getting in and out of your DayBreak easy
- 10 1/2" floor decking in one seamless piece to reduce squeaks and road noise; it also allows for a more solid, level floor
- 11 Totally enclosed and heated wastewater holding tank compartments that make possible extended seasonal use of your DayBreak
- 12 Undercoating and a foam sealant that provides extra protection from the elements
- 13 A high-quality residential carpet with padding for superior comfort and lasting good looks — not to mention the extra insulation it provides
- 14 Sturdy, lightweight baggage doors with 1-3/4" block-foam insulation, easy-to-grasp paddle handles and latches that grip immediately to keep doors shut
- 15 Attractive, white, anodized aluminum radius window frames with large, sliding-glass windows that are tinted to keep out solar heat
- 16 Aluminum perimeter framing around doors and windows to prevent leaks and increase strength
- 17 Standard jalousie windows that let you ventilate your DayBreak bedroom even during rain showers
- 18 An elegant-looking Ice White™ exterior made of durable, easy-to-maintain, one-piece fiberglass
- 19 A fully integrated rear fiberglass cap for extra strength and curb appeal; on DayBreaks of 29 feet and larger it comes with a big rear window
- 20 An aluminum roof ladder, standard, that makes it easy to get at the roof storage area
- 21 Block-foam insulation that's cut, fitted and glued into every cavity in the floor, providing excellent insulation value
- 22 A one-piece, seamless roof that comes with a full 12-year warranty and is specially formulated to be weather-resistant; it also keeps the interior quieter, dampening noise from outside
- 23 Standard ceiling vents that keep the entire coach properly aired out
- 24 A standard 13.5-BTU ducted roof air conditioner that efficiently distributes cool air — part of Damon's exclusive Comfort Control Center™
- 25 Block-foam insulation for superior energy efficiency; it's integrated with the extruded aluminum framework and lauan decking to create a super-solid crowned roof assembly



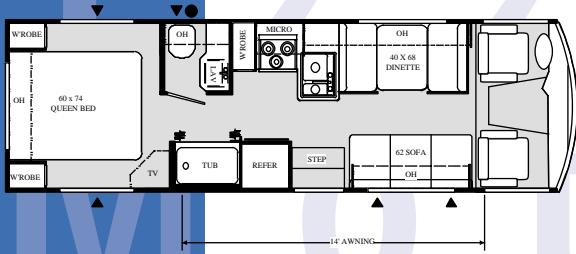
This is a strenuous 400-point inspection test that every DayBreak Motorhome must pass before it leaves the factory. We've set our standards high because we know yours are. And it's our goal, always, to go beyond your expectations ... to go the extra mile for you. Result? You're assured years of safe, trouble-free camping.



At Damon, we're committed to keeping you on the road, committed to making your getaways as pleasant and trouble-free as humanly possible. That's why, as part of our continuous improvement effort, we've inaugurated Total Quality Service. Among its benefits is a computerized communication network that will link Damon dealers across the country to our corporate offices. Dealers can get parts in a snap. They can also handle your warranty claims faster and more efficiently. And, from our end, we can make sure our dealers always have the latest, most up-to-date service information. Oh, yes, another TQS advantage is that you can now get quality Damon service not just from a Damon dealer, but from virtually any RV dealer anywhere in the country. Damon and TQS. "Now you're going places" for sure!

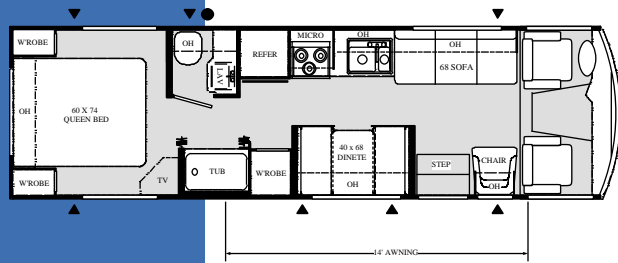
# FLOOR PLANS

2740



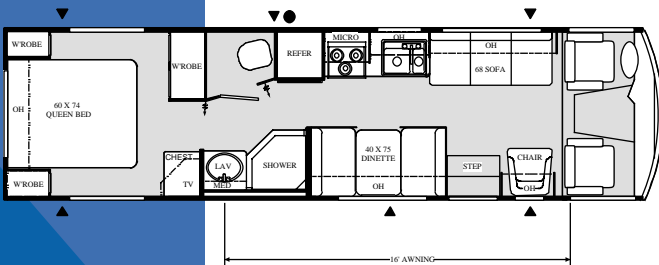
**Features:** Rear queen-size island bed • 36"-long bathtub • L-shaped kitchen • Large under-bed storage area • Tremendous livability and function for your family

2960



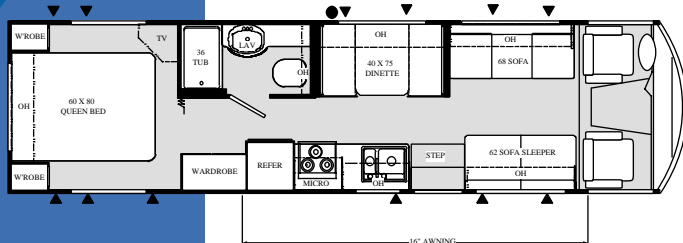
**Features:** Full storage compartment under sofa • Rear queen-size island bed • Large bathtub • Full 40" dinette • Cutlery drawer under sink

3130



**Features:** Lots of drawers and cabinets • Private stool area • Large angled shower • Oversized wardrobe • Open bath area

3210



**Features:** Sleeps 5 comfortably • Double sofa • Large dinette • Private bath • Full 80" queen-size bed

## Model 2740

Options	A, B
Chassis	Chevy
Wheelbase	158.5"
GVWR (lbs.)	12,300
Fuel tank	60 gal.
Overall length	28'0"
Overall height with A/C	11'3"
Width	96"
Fresh water system (appx. gal.)	38
Grey water (appx. gal.)	42
Black water (appx. gal.)	42
Sleeping capacity	3
LP gas capacity (appx.)	85 lbs.

## Model 2960

Options	C, D
Chassis	Chevy
Wheelbase	178"
GVWR (lbs.)	14,800
Fuel tank	80 gal.
Overall length	30'11"
Overall height with A/C	11'3"
Width	96"
Fresh water system (appx. gal.)	63
Grey water (appx. gal.)	42
Black water (appx. gal.)	42
Sleeping capacity	4
LP gas capacity (appx.)	85 lbs.

## Model 3130

Options	C, D
Chassis	Chevy
Wheelbase	216.5"
GVWR (lbs.)	14,800
Fuel tank	80 gal.
Overall length	33'4"
Overall height with A/C	11'3"
Width	96"
Fresh water system (appx. gal.)	63
Grey water (appx. gal.)	42
Black water (appx. gal.)	42
Sleeping capacity	4
LP gas capacity (appx.)	85 lbs.

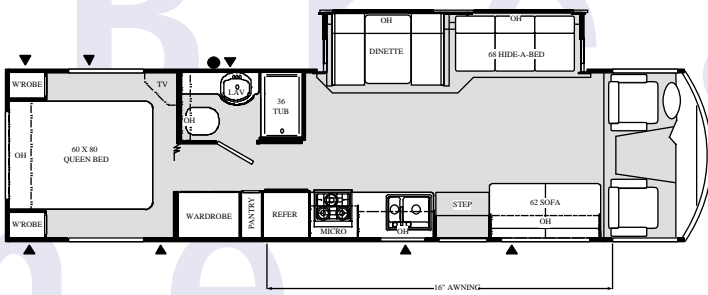
## Model 3210

Options	C, D, E,
Chassis	Chevy
Wheelbase	216.5"
GVWR (lbs.)	16,500
Fuel tank	80 gal.
Overall length	33'11"
Overall height with A/C	11'3"
Width	96"
Fresh water system (appx. gal.)	63
Grey water (appx. gal.)	42
Black water (appx. gal.)	42
Sleeping capacity	5
LP gas capacity (appx.)	85 lbs.



3270

- ▲ = Under floor storage
- = Exterior wash down kit

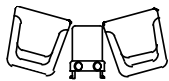
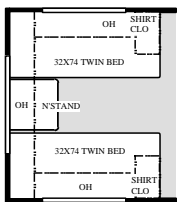


**Model 3270**

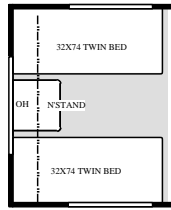
Options	C, D, E
Chassis	Chevy
Wheelbase	216.5"
GVWR (lbs.)	16,500
Fuel tank	80 gal.
Overall length	34'3"
Overall height with A/C	11'3"
Fresh water system (appx. gal.)	63
Grey water (appx. gal.)	42
Black water (appx. gal.)	42
Sleeping capacity	5
LP gas capacity (appx.)	85 lbs.

Features: Spacious living area with standard slideout • Pantry storage • Full 80" queen-size bed • 36"-long bathtub • Private bath

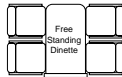
**Options:**



Option B



Option E



Option C

Option D

Option A

	2740	2960	3130	3210	3270
<b>Exterior</b>					
Leveling jacks	0	0	0	0	S
Paint package – Light Antelope or Royal Blue	0	0	0	0	0
Laser striping	0	0	0	0	0
Roof rack	0	0	0	0	0
Roof ladder	S	S	S	S	S
Roof vents	S	S	S	S	S
Rubber roof	S	S	S	S	S
Aerodynamic front fiberglass cap	S	S	S	S	S
Front fiberglass bumper molded into cap	S	S	S	S	S
Automotive rear bumper	S*	S	S	S	S
Awning rail	S	S	S	S	S
Awning	S	S	S	S	S
Exterior entry-assist handrail	S	S	S	S	S
Ice White™ smooth fiberglass exterior with DLX graphics	S	S	S	S	S
Locking exterior storage doors	S	S	S	S	S
White radius entry door	S	S	S	S	S
Porch light	S	S	S	S	S
Lined and lighted storage compartments	S	S	S	S	S
Pass-through storage	S	S	S	S	S
Sewer hose storage	S	S	S	S	S
One-piece rear fiberglass cap	N/A	S	S	S	S

\* 2740 steel, others molded fiberglass

	2740	2960	3130	3210	3270
<b>Bedroom</b>					
Upgrade innerspring mattress	0	0	0	0	0
Twin beds with bedspreads and headboards	0	0	0	0	0
Bedspread and headboard	S	S	S	S	S
Queen-size bed	S	S	S	S	S
TV cabinet and jack	S	S	S	S	S
Jalousie windows	S	S	S	S	S
Roller shades with drapes	S	S	S	S	S
Mini blinds in place of roller shades	0	0	0	0	0

S = Standard    0 = Optional    N/A = Not Available



	2740	2960	3130	3210	3270
<b>Living Area</b>					
2 barrel chairs and table in place of sofa	0	N/A	N/A	N/A	N/A
1 barrel chair and table in place of sofa	N/A	N/A	N/A	0	0
Clock and decorator mirror	S	S	S	S	S
Mini blinds in living room	0	0	0	0	0
Video package (cassette player and control center)	0	0	0	0	0
AM/FM cassette stereo	S	S	S	S	S
13" color TV with full-function remote in front overhead with antenna, booster and jack	S	S	S	S	S
Decorator glass in living room overhead cabinet	S	S	S	S	S
100% polypropylene carpeting with stain treatment and padding	S	S	S	S	S
Entry-assist handle	S	S	S	S	S

	2740	2960	3130	3210	3270
<b>Bathroom</b>					
Shower door	0	0	S	0	0
Shower curtain	S	S	N/A	S	S
Tub or shower with surround	S	S	S	S	S
Skylight in shower (rectangle)	S	S	S	S	S
Foot-flush toilet	0	0	0	0	0
Hand-flush toilet	S	S	S	S	S
Power vent in bath	S	S	S	S	S
Hardwood-framed mirror in bath	S	S	S	S	S
Medicine cabinet with solid hardwood door	N/A	N/A	S	N/A	N/A

	2740	2960	3130	3210	3270
<b>Kitchen</b>					
Refrigerator – large double-door, 8 cu. ft.	0	0	0	0	0
Refrigerator – solid wood front *	0	0	0	0	0
Refrigerator flush-mount, double-door	S	S	S	S	S
Solid-wood cabinet doors*	S	S	S	S	S
Coffee maker	S	S	S	S	S
Cordless hand vacuum	0	0	0	0	0
Plank kitchen flooring*	S	S	S	S	S
Second sink cover	0	0	0	0	0
Double-bowl kitchen sink	S	S	S	S	S
3-burner range and oven	S	S	S	S	S
Folding range cover	S	S	S	S	S
Lighted power range hood with monitor panel (includes LPG readout)	S	S	S	S	S
Microwave oven with turntable	S	S	S	S	S
Mini blinds	S	S	S	S	S
Freestanding dinette	N/A	0	0	0	0
Padded dinette top	S	S	S	S	S
Self-edged countertops throughout	S	S	S	S	S
Cutlery drawer	N/A	S	S	S	S
Fire extinguisher	S	S	S	S	S

\*Light Oak or Pearwood

	2740	2960	3130	3210	3270
<b>Chassis</b>					
Spare tire	0	0	0	0	0
Stainless steel wheel liners	0	0	0	0	0
Stainless steel wheel covers	S	S	S	S	S
4-speed auto transmission with overdrive	S	S	S	S	S
Front mud flaps	S	S	S	S	S
Rear mud flaps	S	S	S	S	S
Radial tires	S	S	S	S	S
Power steering	S	S	S	S	S
Under-hood light	S	S	S	S	S
Trailer hitch	S	S	S	S	S

S = Standard      0 = Optional      N/A = Not Available



	2740	2960	3130	3210	3270
<b>Entry</b>					
Electric entrance step	0	0	0	0	0
Integrated entrance step	S	S	S	S	S
Interior entry-assist grab handle	S	S	S	S	S
Deadbolt door lock	S	S	S	S	S

	2740	2960	3130	3210	3270
<b>Utilities</b>					
13.5-BTU ducted roof air conditioner	S	S	S	S	S
Second 11.0-BTU ducted roof air conditioner	N/A	0	0	0	0
15.0-BTU ducted roof air conditioner upgrade	0	0	0	0	0
Generator: Onan 5.0	0	0	0	0	0
Generator: Onan 6.5	N/A	0	0	0	0
Water heater by-pass kit	S	S	S	S	S
Emergency-start circuit	S	S	S	S	S
Cable TV hookup	S	S	S	S	S
Battery disconnect	S	S	S	S	S
Auxiliary deep-cycle battery	S	S	S	S	S
30-amp, 120-volt power supply	S	S	S	S	S
45-amp, 12-volt power converter	S	S	S	S	S
12-volt demand water pump	S	S	S	S	S
31M-BTU electronic ignition floor-ducted furnace	S	S	S	S	S
6-gal. gas water heater with electric ignition	S	S	S	S	S
Enclosed and heated holding tanks with pads	S	S	S	S	S
Telephone jack hookup	0	0	0	0	0
Exterior shower	0	0	0	0	0
Exterior GFCI receptacle	S	S	S	S	S
Smoke detector	S	S	S	S	S
City water hookup	S	S	S	S	S
Carbon monoxide detector	S	S	S	S	S
LP gas detector	S	S	S	S	S
Wall-mount thermostat for roof air	0	0	0	0	0

	2740	2960	3130	3210	3270
<b>Cockpit</b>					
Burl instrument panel	S	S	S	S	S
Molded dash	S	S	S	S	S
Dash fans	S	S	S	S	S
Driver's door with slider window	0	0	0	0	0
Tinted wraparound windshield	S	S	S	S	S
Side-mount power mirrors	0	0	0	0	0
Upgrade non-power mirrors	0	0	0	0	0
Windshield privacy drape	S	S	S	S	S
Floor mats	0	0	0	0	0
Full instrumentation	S	S	S	S	S
Map lights	S	S	S	S	S
Reclining swivel captain's chairs	S	S	S	S	S
Sun visors	S	S	S	S	S
Tilt steering wheel	S	S	S	S	S
Dash air-conditioning	S	S	S	S	S
Back-up monitor system ready	N/A	0	0	0	0
Back-up monitor system	N/A	0	0	0	0
Drink tray	S	S	S	S	S

## DAYBREAK VIDEO OFFER

See a DayBreak up close and personal, inside and out, with Damon's special video tour — just \$10.00 by mail. Send your check, name and address to:

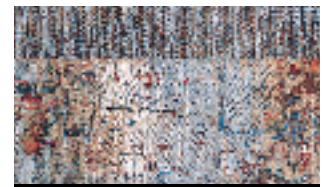
Damon Corporation —  
DayBreak Video  
P.O. Box 2888  
Elkhart, IN 46515



Calypso



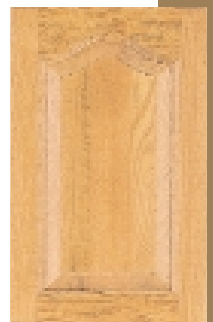
Carnival



Fiesta



Light Oak



Pearwood

## PAINT PACKAGES



Light Antelope



Royal Blue



Laser Stripe



Go RVing.

Your DayBreak dealer:

*Damon*

P.O. Box 2888  
Elkhart, IN 46515  
800-577-5692  
[www.DamonRV.com](http://www.DamonRV.com)



Due to constant product improvements, the equipment, specifications, component parts and standard/optional equipment are subject to change without notice or obligation. Product photography or diagrams may show equipment that is optional. Damon Corporation reserves the right to make changes in prices and models, and to discontinue models without notice or obligation. Components, parts, or chassis may have been manufactured at times other than the model year indicated. All capacities are approximate and dimensions are nominal. All dry weights are based on standard model features and do not include optional features or equipment.