

1998

KOUNTRY AIRE

KOUNTRY AIRE

KOUNTRY AIRE

KOUNTRY A

KOUNTRY A

KOUNTRY A

KOUNTRY A

KOUNTRY A

KOUNTRY A

KOUNTRY A

KOUNTRY A

KOUNTRY AIRE

KOUNTRY A

KOUNTRY A

KOUNTRY A

KOUNTRY A

KOUNTRY A

KOUNTRY A

KOUNTRY A

KOUNTRY A

KOUNTRY AIRE

KOUNTRY AIRE



KOUNTRY AIRE FIFTH WHEEL



CLASS A MOTORHOME • DIESEL PUSHER

NTRY AIRE

DIESEL PUSHER

OPTIONS

Approx.
Weight

Air Conditioning & Heating

- Air Conditioner Brisk Air 15M BTU w/Heat Strip in Place of 13.5M 5 lbs.
- Air Conditioner Central Penguin 13.5M BTU w/Heat Strip (extra) 100 lbs.

Appliances & Accessories

- CB Radio 2 lbs.
- CD Player - Remote 10 Disc Changer w/Amplifier & Subwoofer 10 lbs.
- Cellular Telephone Antenna 1 lbs.
- Coffee Maker 5 lbs.
- Freezer Norcold AC/DC (on slides) in Exterior Storage Compartment 113 lbs.
- Icemaker Added to Dometic Refrigerator 5 lbs.
- Icemaker U Line (except 4057, 4060) 57 lbs.
- Refrigerator Dometic Double Door 1062 (10 cu. ft.) 91 lbs.
- Refrigerator Dometic Side By Side (10 cu. ft.) 47 lbs.
- Satellite Dish (Winegard) w/Automatic Seeking System (does not include DSS receiver) 70 lbs.
- Washer/Dryer Compact 1-Piece 185 lbs.
- Washer/Dryer Prep 22 lbs.
- Water Heater 10 Gallon Gas/Electric, Direct Spark Ignition & Engine Assist 10 lbs.

Cabinets & Furniture

- Built-in Booth Dinette w/Drawers, in Place of Free Standing Table/Chairs 23 lbs.
- Cabinetry Cherry Hardwood w/Raised Panel Doors 0 lbs.
- Cabinetry Frosted Maple Hardwood 0 lbs.
- Chair Flexsteel High Back Recliner w/Headrest Leather/Vinyl in Place of Standard Chair 10 lbs.
- Full-Length Wardrobe in Place of Wardrobe/Washer Dryer Cabinet 0 lbs.
- Overhead Cabinet Added in Slideout 75 lbs.
- Sofa Flexsteel Hide-A-Bed 74" in Place of Standard (4057, 4081) 27 lbs.
- Sofa Flexsteel Leather/Vinyl in Place of Standard (except 4068) 10 lbs.
- Sofa L-Lounge w/Incliner & Ottoman Leather/Vinyl in Place of 84" Sofa (4031, 4060, 4087) -20 lbs.
- Wood Doors & Shelves on China Cabinet in Place of Standard 8 lbs.

Chassis Features

- Optional Chassis-Freightliner X-Line 330 HP

Electrical Features

- Generator 7.5 KW Onan (diesel) Quiet Series in Place of Power Tech 25 lbs.
- Inverter 400 Watt (for dash TV & VCR) 10 lbs.
- Inverter/Converter (Heart Freedom 20) 50 lbs.
- Lights Exterior Security (1 on each side) 2 lbs.

Exterior Features

- Roof & Top Wrap Gel-Coated Fiberglass w/1/4" Foam Insulation 2 lbs.

Interior Features

- Floor Covering, Ceramic Tile in Bath Area 75 lbs.
- Floor Covering, Ceramic Tile in Kitchen Area 35 lbs.
- Window Treatment Lined Day/Night Pleated Shades 5 lbs.

Plumbing / Bath Features

- Shower Corner (4081) -10 lbs.

Construction Features

- CSA Approval for Canadian Dealers Only 0 lbs.

Windows, Awnings, & Vents

- Awning, At Front Entrance Door Carefree 12 lbs.
- Awning, Side A&E 9000 128 lbs.
- Awning, Slideout Cover A&E 25 lbs.
- Awning, Window A&E 9000 (specify location) 5 lbs.
- Vent 12 Volt Fantastic w/Rain Sensor (specify location) 11 lbs.
- Windows Radius Safety Glass Double Pane, Dark Tinted (except driver/passenger area) 93 lbs.

Bedroom Features

- Bed Twins 75" 102 lbs.
- Luxurious Pillow Top Mattress in Place of Standard 10 lbs.

Kountry Aire® Diesel Pusher Freightliner Chassis Specifications

Model	KP4031	KP4057	KP4060	KP4081	KP4087
Chassis	Freightliner X-line	Freightliner X-line	Freightliner X-line	Freightliner X-line	Freightliner X-line
Engine	CAT 330	CAT 330	CAT 330	CAT 330	CAT 330
Axle Ratio	4.63	4.63	4.63	4.63	4.63
Fuel Cap	150 Gal.	150 Gal.	150 Gal.	150 Gal.	150 Gal.
Wheel Base	276"	276"	276"	276"	276"
Front GAWR	12,000 lbs.	12,000 lbs.	12,000 lbs.	12,000 lbs.	12,000 lbs.
Rear GAWR	19,000 lbs.	19,000 lbs.	19,000 lbs.	19,000 lbs.	19,000 lbs.
GVWR	31,000 lbs.	31,000 lbs.	31,000 lbs.	31,000 lbs.	31,000 lbs.
GCWR*	36,000 lbs.	36,000 lbs.	36,000 lbs.	36,000 lbs.	36,000 lbs.
Approx. Unloaded Vehicle Wt.	23,200 lbs.	24,136 lbs.	24,286 lbs.	24,125 lbs.	24,225 lbs.
Approx. Net Carrying Cap.	7,800 lbs.	6,864 lbs.	6,714 lbs.	6,875 lbs.	6,775 lbs.

Lengths, Heights, Widths and Dry Weights are approximate. * Hitch Rating 4000 lbs.

Kountry Aire® Diesel Pusher Sizes and Capacities

Model	KP4031	KP4057	KP4060	KP4081	KP4087
Approx. Overall Length	40'-8"	40'-8"	40'-8"	40'-8"	40'-8"
Overall Width	96"	96"	96"	96"	96"
Approx. Overall Height	11'-8"	11'-8"	11'-8"	11'-8"	11'-8"
Interior Width	90-1/2"	90-1/2"	90-1/2"	90-1/2"	90-1/2"
Interior Height	78"	78"	78"	78"	78"
Grey Tank	55 Gal.	55 Gal.	55 Gal.	55 Gal.	55 Gal.
Sewage Tank	55 Gal.	55 Gal.	55 Gal.	55 Gal.	55 Gal.
Water Tank	105 Gal.	105 Gal.	105 Gal.	105 Gal.	105 Gal.

DIESEL PUSHER

1998 KOU

STANDARDS

Air Conditioning & Heating

- Air Conditioner Central Penguin 13.5 BTU w/Heat Strip (1)
- Dash Air Conditioning w/Independent Settings for Driver & Passenger
- Heat In Floor Ducted
- LP Leak Detector

Appliances & Accessories

- Cable TV Connection
- Carbon Monoxide Detector
- CB Antenna
- Horn (air)
- Microwave Oven Convection 30"
- Range Cover Bifold Corian
- Range Recessed Wedgewood 3-Burner Hot Plate
- Rear View Monitor System
- Refrigerator Dometic Royale 3862 (8 cu. ft.)
- Refrigerator Front Framed Hardwood Raised Panel
- Satellite Dish Prep Only - w/RG 6 Coaxial, Phone/TV Jack & 110 Volt Recept
- Speaker Switch System (between TV & dash stereo)
- Stereo AM/FM/CD Player (in dash)
- Telephone Connection w/1 Phone Jack
- TV Antenna w/Power Booster & 2 Jacks
- TV Color 19"
- TV Jack for Exterior Use on Door Side
- VCR - 4 Head w/Remote
- VCR Prep w/TV Video Switch
- Water Heater 10 Gal. Gas/Electric w/Direct Spark Ignition

Cabinets & Furniture

- Cabinetry Oak Hardwood w/Raised Panel Double Arched Doors
- Cedar Paneling on Side Wall of One Wardrobe
- Chair Flexsteel High Back Recliner w/Headrest

- Countertop Corian in Kitchen w/Recessed Stainless Steel Sink
- Countertop Corian w/Integrated Lavatory Bowl in Bath
- Dinette Table Hidden Leaf w/4 Upholstered Chairs (4031)
- Dinette Table Wall Mount w/2 Upholstered Chairs (4031)
- Drawers w/Metal Guides & Side Rollers
- Front Seats 8-Way Power Lumbar & Ergo-Flex Leveling Arm System
- Front Seats Flexsteel Swivel/Recline w/Integrated Seat Belt
- Molded Silverware Divider Tray
- Pull-out Pantry
- Sofa Flexsteel Magic Bed

Chassis Features

- Chassis Spartan Mountain Master 325 HP Raised Rail w/Independent Front Suspension
- Air Brakes w/Automatic Slack Adjuster Front & Rear
- Anti-Lock Braking System
- Back-Up Alarm
- Cruise Control
- Dash Heater/Air Conditioner High Output
- Pac 8 Engine Exhaust Brake
- Recessed Fuel Fill w/Locking Door (1 on each side)
- Steering Wheel Tilt & Telescope
- Wheels Polished Aluminum

Electrical Features

- Battery Disconnect (coach battery)
- Battery, Thermoil (4-6 volt) On Pull-out Tray
- Converter 75 AMP w/Charger
- Electrical Service 50 AMP w/Flexible Cord
- Energy Management System
- Generator 7.0 KW Power Tech (diesel) on Slides w/Automatic Changeover
- Light Spot w/Remote Control
- Lighting Fluorescent Recessed in

Ceiling & Overhead Cabinets

- Lights Daytime Headlight System
- Lights Docking
- Lights Driving
- Lights in Exterior Storage Compartments w/Automatic Switches
- Lights in Wardrobes w/Automatic Switches
- Lights Interior Courtesy
- Midship Side Turn Signals
- Recepts 110 Volt w/Ground Fault Interrupter (interior & exterior)
- Solar Panel 5 Watt to Charge Chassis Battery
- Switch for Emergency Chassis Engine Start
- Switched Recept for Engine Block Heater

Exterior Features

- Convex Exterior Mirrors w/Remote Control, Defrost & Turn Signals
- Exterior Front & Rear Gel-Coated Fiberglass End Caps
- Exterior Sides Gel-Coated Fiberglass
- Hitch for Towing Car w/Wire Connector (class-2, 4000 lbs. rating)
- Jacks Hydraulic Leveling w/Automatic Control
- Mud Flaps (front & rear)
- Pull-out Storage Trays in Exterior Compartments
- Roof Rack & Ladder
- Roof Rubber w/9MM Decking
- Slideout Large w/Patented Flat Floor (see floorplans for availability & layout)
- Undercoating

Interior Features

- Bedspread Quilted w/Matching Shams & Accent Pillow
- Ceiling Woven Soft Touch
- Decorative Border in Bedroom
- Decorative Wall Clock & Mirror
- Floor Covering, High Pressure Laminated 15" Tile in Kitchen Area
- Floor Covering, Carpet Staintech, 45 oz. 100% Nylon Plush Saxony
- Hardwood Fascia on Front of Slideout
- Sink Cover, (2)
- Smoke Detector & 10 BC Fire Extinguisher
- Window Treatment Day/Night Pleated Shades & Lambrequins
- Window Treatment Mini Blinds (kitchen)

Plumbing / Bath Features

- Bath Accessories Brass (1 each- towel bar, 1 tissue holder, towel ring & robe hook)
- Exterior Convenience Wash Station (hot/cold water, soap & towel dispenser)
- Faucet for Kitchen Sink Single Handle High Rise (Moen)
- Faucet for Shower & Lavatory Single Handle (Moen)
- Monitor Panel
- Sewage Holding Tank Rinse
- Shower Exterior (on off door side)
- Stool China w/Spray Attachment
- Tub/Shower Fiberglass w/Enclosure
- Water Filtering System w/Drink Dispenser (kitchen)
- Water Hose w/Automatic Rewind & City Water Hook-Up
- Winterize Convenience Package (w/water heater bypass)

Construction Features

- Insulation Fiberglass R7 Sidewalls & Floor, R19 Roof
- Insulation Foam 5/8" Laminated in Sidewalls & Ceiling
- Structure, Aluminum Sidewalls & Roof, 16" on Center

Windows, Awnings & Vents

- Door Bell
- Door Driver's Side w/Power Window
- Exterior Lighted Acrylic Assist Handle (at main entrance door)
- Skylight in Bathroom w/Soft Shade
- Step 12 Volt Automatic
- Vent 12 Volt Fantastic Vented Through Central Air Duct
- Vent 12 Volt in Bath Area w/Wall Switch
- Windows Radius Safety Glass Dark Tinted

Bedroom Features

- Lifts for Convenient Storage Under Fixed Beds

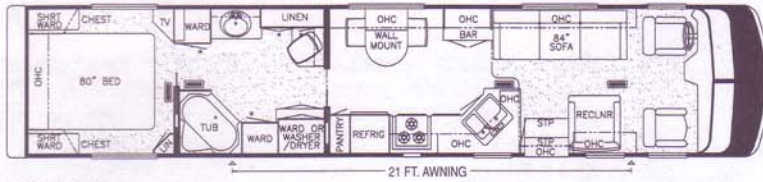
Kountry Aire® Diesel Pusher Spartan Chassis Specifications

Model	KP4031	KP4057	KP4060	KP4081	KP4087
Chassis	Spartan MM	Spartan MM	Spartan MM	Spartan MM	Spartan MM
Engine	CUM 325	CUM 325	CUM 325	CUM 325	CUM 325
Axle Ratio	4.63	4.63	4.63	4.63	4.63
Fuel Cap	150 Gal.	150 Gal.	150 Gal.	150 Gal.	150 Gal.
Wheel Base	276"	276"	276"	276"	276"
Front GAWR	12,000 lbs.	12,000 lbs.	12,000 lbs.	12,000 lbs.	12,000 lbs.
Rear GAWR	19,000 lbs.	19,000 lbs.	19,000 lbs.	19,000 lbs.	19,000 lbs.
GVWR	31,000 lbs.	31,000 lbs.	31,000 lbs.	31,000 lbs.	31,000 lbs.
GCWR*	41,000 lbs.	41,000 lbs.	41,000 lbs.	41,000 lbs.	41,000 lbs.
Approx. Unloaded Vehicle Wt	23,100 lbs.	24,036 lbs.	24,186 lbs.	24,025 lbs.	24,125 lbs.

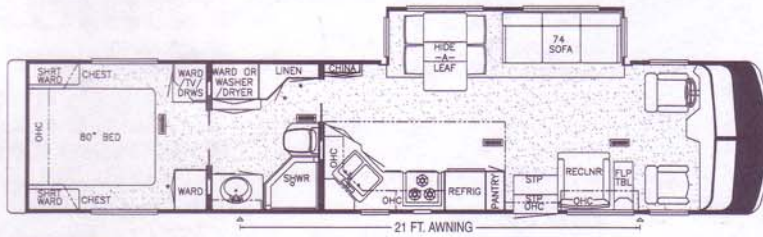
Kountry Aire® Diesel Pusher
Insulation "R" Values

COUNTRY AIR

DIESEL PUSHER



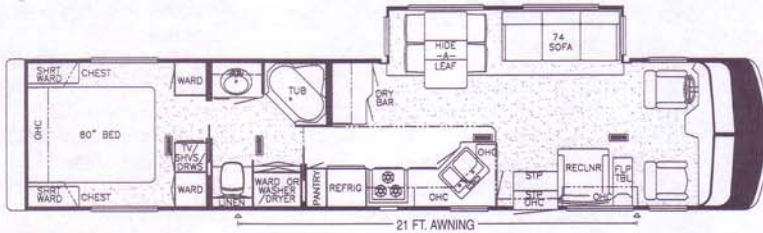
KP 4031



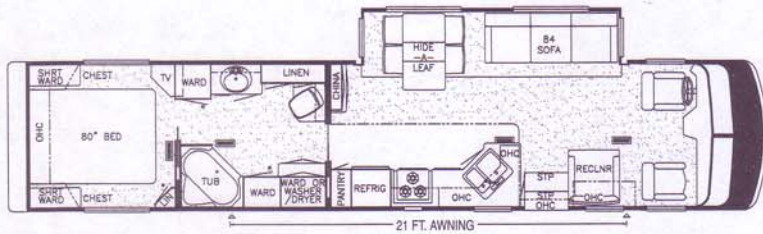
KP 4057



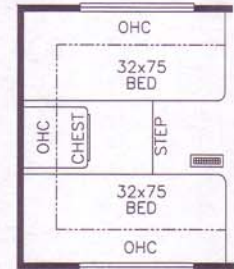
KP 4060



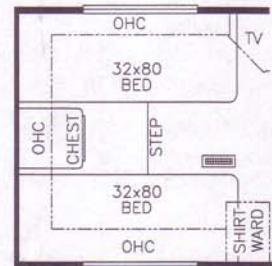
KP 4081



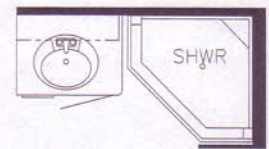
KP 4087



Option 8k108
75" Twin Beds
Available in Models:
KP 4057 • 4060 • 4081



Option 8k107
80" Twin Beds
Available in Models:
KP 4031 • 4087



Option 8p210
Corner Shower ilo Tub
Available in Models:
KP 4081

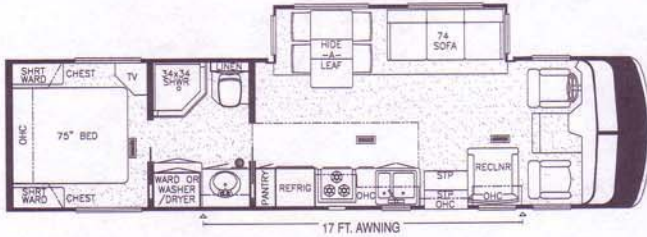


Option 8p211
Corner Shower ilo Tub
Available in Models:
KP 4031 • 4087

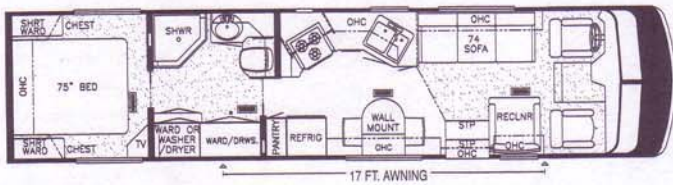




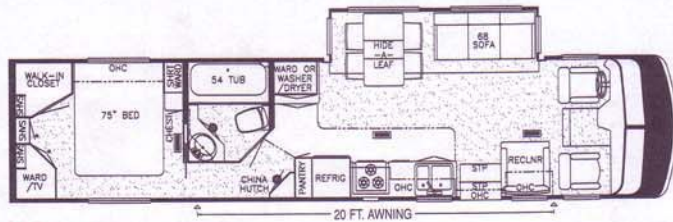
KA 3356



KA 3481



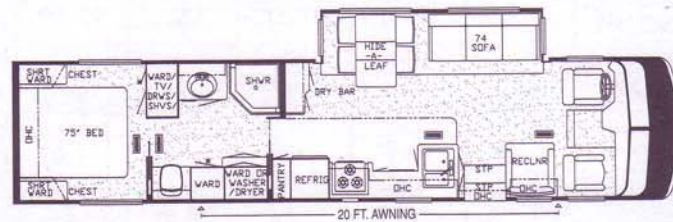
KA 3535



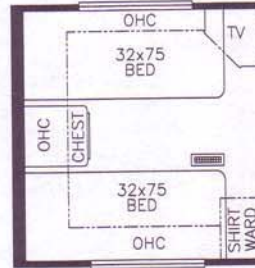
KA 3761



KA 3780



KA 3796



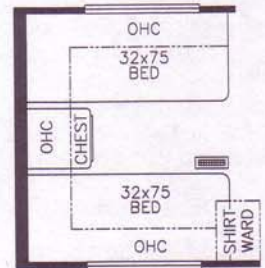
Option 8k098
75" Twin Beds
Available in Models:
KA 3356 • 3481 • 3797



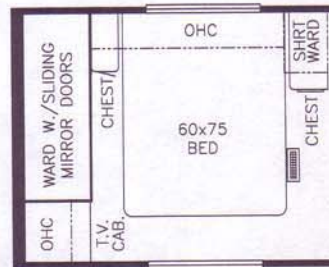
Option 8k099
75" Twin Beds
Available in Model:
KA 3535



Option 8k100
75" Twin Beds
Available in Model:
KA 3780



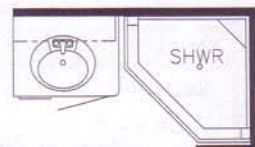
Option 8k101
75" Twin Beds
Available in Model:
KA 3796



Option 8k951
Honeymoon Suite
Available in Model:
KA 3780



Option 8k112
Entertainment Center
ilo Chair and Flipper Table
Available in Model:
KA 3797



Option 8p210
Corner Shower ilo Tub
Available in Model:
KA 3780

NTRY AIRE

CLASS A

OPTIONS

Approx.
Weight

Air Conditioning & Heating

- Air Conditioner Brisk Air 15M BTU w/Heat Strip in Place of 13.5M 5 lbs.
- Air Conditioner Central Penguin 13.5M BTU w/Heat Strip (extra) 100 lbs.
- Auxiliary Heater in Bedroom 20 lbs.

Appliances & Accessories

- CB Radio 2 lbs.
- Cellular Telephone Antenna 1 lbs.
- Coffee Maker 5 lbs.
- Icemaker Added to Dometic Refrigerator 5 lbs.
- Icemaker U Line (except 4057, 4060) 57 lbs.
- Refrigerator Dometic Double Door 1062 (10 cu. ft.) 91 lbs.
- Refrigerator Dometic Side By Side 7732 (10 cu. ft.) (3481, 3535, 3761, 3796, 3797) 47 lbs.
- Satellite Dish (Winegard) w/Automatic Seeking System (does not include DSS receiver) 70 lbs.
- Washer/Dryer Compact 1-Piece (3757, 3760, 3780) 185 lbs.
- Washer/Dryer Prep (3757, 3760, 3780) 22 lbs.
- Water Heater 10 Gal. Gas/Electric, Direct Spark Ignition & Engine Assist 10 lbs.

Cabinets & Furniture

- Built-in Booth Dinette w/Drawers, in Place of Free Standing Table/Chairs 23 lbs.
- Cabinetry Cherry Hardwood w/Raised Panel Doors 0 lbs.
- Cabinetry Frosted Maple Hardwood 0 lbs.
- Chair Flexsteel High Back Recliner w/Headrest Leather/Vinyl in Place of Standard Chair 10 lbs.
- Chair Flexsteel Large Free Standing Glider w/Leather/Vinyl in Place of Standard Chair (except 3456, 3481) 27 lbs.
- Entertainment System in Place of Standard Features (3797) 100 lbs.
- Full-Length Wardrobe in Place of Wardrobe/Washer Dryer Cabinet (except 3356) 0 lbs.
- Sofa Flexsteel Hide-A-Bed 74" in Place of Standard (3481, 3780, 3796) 27 lbs.
- Wood Doors & Shelves on China Cabinet in Place of Standard 8 lbs.

Interior Features

- Floor Covering, Ceramic Tile in Bath Area 75 lbs.
- Floor Covering, High Pressure Laminated Simulated Plank in Kitchen Area 0 lbs.
- Hardwood Fascia on Front of Slideout 40 lbs.
- Window Treatment Lined Day/Night Pleated Shades 5 lbs.

Construction Features

- CSA Approval for Canadian Dealers Only 0 lbs.

Windows, Awnings, & Vents

- Awning, Side A&E 9000 128 lbs.
- Awning, Slideout Cover A&E 25 lbs.
- Awning, Window A&E 9000 (specify location), 5 lbs.

- Rear Window (except 3761) 40 lbs.
- Vent 12 Volt Fantastic w/Rain Sensor (specify location) 11 lbs.

Bedroom Features

- Bed Twins 75" 102 lbs.
- Honeymoon Suite (3780) -9 lbs.
- Luxurious Pillow Top Mattress in Place of Standard 10 lbs.

Kountry Aire® Class A Ford Chassis Specifications

Model	KA3481	KA3535	KA3761	KA3780	KA3796	KA3797
Chassis	Ford	Ford	Ford	Ford	Ford	Ford
Engine	460	460	460	460	460	460
Axle Ratio	5.13	5.13	5.13	5.13	5.13	5.13
Fuel Cap	75 Gal.	75 Gal.	75 Gal.	75 Gal.	75 Gal.	75 Gal.
Wheel Base	190"+tag	190"+tag	212"+tag	212"+tag	212"+tag	212"+tag
Front GAWR	6,000 lbs.	6,000 lbs.	6,000 lbs.	6,000 lbs.	6,000 lbs.	6,000 lbs.
Rear GAWR	11,000 lbs.	11,000 lbs.	11,000 lbs.	11,000 lbs.	11,000 lbs.	11,000 lbs.
Tag GAWR	4,000 lbs.	4,000 lbs.	4,000 lbs.	4,000 lbs.	4,000 lbs.	4,000 lbs.
GVWR	20,000 lbs.	20,000 lbs.	20,000 lbs.	20,000 lbs.	20,000 lbs.	20,000 lbs.
GCWR*	25,000 lbs.	25,000 lbs.	25,000 lbs.	25,000 lbs.	25,000 lbs.	25,000 lbs.
Approx. Unloaded Vehicle Wt.	17,082 lbs.	16,404 lbs.	17,944 lbs.	17,955 lbs.	18,080 lbs.	17,972 lbs.
Approx. Net Carrying Cap.	2,918 lbs.	3,596 lbs.	2,056 lbs.	2,045 lbs.	1,920 lbs.	2,028 lbs.

Lengths, Heights, Widths and Dry Weights are approximate. * Hitch Rating 4000 lbs.

Kountry Aire® Class A Sizes and Capacities

Model	KA3356	KA3481	KA3535	KA3761	KA3780	KA3796	KA3797
Approx. Overall Length	33'-10"	34'-10"	35'-10"	37'-11"	37'-11"	37'-11"	37'-11"
Overall Width	96"	96"	96"	96"	96"	96"	96"
Approx. Overall Height	11'-8"	11'-8"	11'-8"	11'-8"	11'-8"	11'-8"	11'-8"
Interior Width	90-1/2"	90-1/2"	90-1/2"	90-1/2"	90-1/2"	90-1/2"	90-1/2"
Interior Height	78"	78"	78"	78"	78"	78"	78"
Grey Tank	50 Gal.	50 Gal.	50 Gal.	50 Gal.	50 Gal.	50 Gal.	50 Gal.
Sewage Tank	50 Gal.	50 Gal.	50 Gal.	50 Gal.	50 Gal.	50 Gal.	50 Gal.

Chassis Features

- Optional Chassis-Freightliner Diesel (210 HP Engine) (Standard on 3356)

Electrical Features

- Generator 7.0 KW Onan Marquis in Place of Standard 6.5 KW 42 lbs.
- Inverter 400 Watt (for dash TV & VCR) 10 lbs.
- Lights Exterior Security (1 on each side) 2 lbs.
- Recept 12 Volt (specify interior location) 1 lbs.

Exterior Features

- Jacks Hydraulic Leveling w/"Touch" Manual Control 0 lbs.
- Roof & Top Wrap Gel-Coated Fiberglass w/1/4" Foam Insulation 0 lbs.

STANDARDS

Air Conditioning & Heating

- Air Conditioner Central Penguin 13.5 BTU w/Heat Strip (1)
- Heat In Floor Ducted
- LP Leak Detector

Appliances & Accessories

- Cable TV Connection
- Carbon Monoxide Detector
- CB Antenna
- Horn (trumpet)
- Microwave Oven Convection 30"
- Range Cover Laminated w/Matching Countertop Material
- Range Recessed Wedgewood 3-Burner Hot Plate
- Rear View Monitor System
- Refrigerator Dometic Royale 3862 (8 cu. ft.)
- Refrigerator Front Framed Hardwood Raised Panel
- Satellite Dish Prep Only - w/RG 6 Coaxial, Phone/TV Jack & 110 Volt Recept
- Speaker Switch System (between TV & dash stereo)
- Stereo AM/FM CD Player (in dash)
- Telephone Connection w/1 Phone Jack
- TV Antenna w/Power Booster & 2 Jacks
- TV Color 19"
- TV Jack for Exterior Use on Door Side
- VCR Prep w/TV Video Switch
- Water Heater 10 Gal. Gas/Electric w/Direct Spark Ignition

Cabinets & Furniture

- Cabinetry Oak Hardwood w/Raised Panel Double Arched Doors
- Cedar Paneling on Side Wall of One Wardrobe
- Chair Flexsteel High Back Recliner w/Headrest

- Countertop Extension (3356, 3481, 3761, 3780)
- Countertop Solid Surface Material in Kitchen w/Corian Edge & Stainless Steel Sink
- Countertop Solid Surface w/Corian Edge & Integrated Porcelain Lavatory Bowl in Bath
- Dinette Table Hidden Leaf w/4 Upholstered Chairs (except 3535)
- Dinette Table Wall Mount w/2 Upholstered Chairs (3535)
- Drawers w/Metal Guides & Side Rollers
- Front Seats Flexsteel Leather/Vinyl w/6-Way Power Lumbar Support & Ergo-Flex Arm
- Front Seats Flexsteel Swivel/Recline w/3-Point Seat Belt
- Molded Silverware Divider Tray
- Pull-out Pantry
- Sofa Flexsteel Hide-A-Bed (3356, 3761)
- Sofa Flexsteel Magic Bed (except 3356, 3797)

Chassis Features

- Chassis-Ford (460 CID Engine) (except 3356)
- Chassis-Freightliner Diesel (210 HP Engine) (3356)
- Cruise Control
- Dash Heater/Air Conditioner High Output
- Recessed Fuel Fill w/Locking Door
- Spare Tire
- Steering Wheel Tilt
- Suspension-Granning Tag Axle (except 3356)
- Wheel Simulators, Stainless Steel

Electrical Features

- Battery Disconnect (coach battery)
- Battery, Thermoil (2-12 volt) On Pull-out Tray
- Converter 75 AMP w/Charger
- Electrical Service 50 AMP w/Flexible Cord
- Generator 6.5 KW Onan w/1 Remote Switch & Automatic Changeover
- Light Spot w/Remote Control

- Lighting Fluorescent Recessed in Ceiling & Overhead Cabinets
- Lights Daytime Headlight System
- Lights Docking
- Lights Driving
- Lights in Exterior Storage Compartments w/Automatic Switches
- Lights in Wardrobes w/Automatic Switches
- Lights Interior Courtesy
- Midship Side Turn Signals
- Receipts 110 Volt w/Ground Fault Interrupter (interior & exterior)
- Solar Panel 5 Watt to Charge Chassis Battery
- Switch for Emergency Chassis Engine Start

Exterior Features

- Convex Exterior Mirrors w/Remote Control, Defrost & Turn Signals
- Exterior Front & Rear Gel-Coated Fiberglass End Caps
- Exterior Sides Gel-Coated Fiberglass
- Hitch for Towing Car w/Wire Connector (class-2, 4000 lbs. rating)
- Jacks Hydraulic Leveling w/Joystick Controller
- Mud Flaps (front & rear)
- Roof Rack & Ladder
- Roof Rubber w/9MM Decking
- Slideout Large w/Patented Flat Floor (see floorplans for availability & layout)
- Undercoating

Interior Features

- Bedspread Quilted w/Matching Shams & Accent Pillow
- Ceiling Woven Soft Touch
- Decorative Border in Bedroom
- Decorative Wall Clock & Mirror
- Floor Covering, High Pressure Laminated 15" Tile in Kitchen Area
- Floor Covering, Carpet Staintech, 45 oz. 100% Nylon Plush Saxony
- Sink Covers, (2)

- Smoke Detector & 10 BC Fire Extinguisher
- Window Treatment Day/Night Pleated Shades & Lambrequins
- Window Treatment Mini Blinds (kitchen)

Plumbing / Bath Features

- Bath Accessories Brass (1 each towel bar, 1 tissue holder, towel ring & robe hook)
- Faucet for Kitchen Sink Single Handle High Rise (Moen)
- Faucet for Shower & Lavatory Single Handle (Moen)
- Monitor Panel
- Sewage Holding Tank Rinse
- Sewage Hose Holder (easy access flop down tray)
- Shower Exterior (on off door side)
- Stool China w/Spray Attachment
- Tub/Shower Fiberglass w/Enclosure
- Water Filtering System w/Drink Dispenser (kitchen)
- Winterize Convenience Package (w/water heater bypass)

Construction Features

- Insulation Fiberglass R7 Sidewalls & Floor, R19 Roof
- Insulation Foam 5/8" Laminated in Sidewalls & Ceiling
- Rear Bumper w/Slide Out Tray for Spare Tire
- Structure, Aluminum Sidewalls & Roof, 16" on Center

Windows, Awnings & Vents

- Door Bell
- Door Driver's Side w/Power Window
- Exterior Lighted Acrylic Assist Handle (at main entrance door)
- Skylight in Bathroom w/Soft Shade
- Step 12 Volt Automatic
- Step Fold Down in Front Bumper
- Vent 12 Volt Fantastic Vented Through Central Air Duct
- Vent 12 Volt in Bath Area w/Wall Switch
- Windows Radius Safety Glass Dark Tinted

Bedroom Features

- Lifts for Convenient Storage Under Fixed Beds

Kountry Aire® Class A Freightliner Chassis Specifications

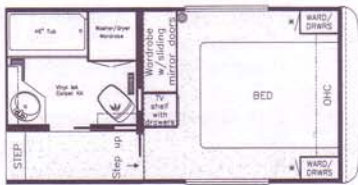
Model	KA3356	KA3481	KA3535	KA3761	KA3780	KA3796	KA3797
Chassis	Freightliner	Freightliner	Freightliner	Freightliner	Freightliner	Freightliner	Freightliner
Engine	CUM. 210	CUM. 210	CUM. 210	CUM. 210	CUM. 210	CUM. 210	CUM. 210
Axle Ratio	3.31	3.31	3.31	3.31	3.31	3.31	3.31
Fuel Cap	90 Gal.	90 Gal.	90 Gal.	90 Gal.	90 Gal.	90 Gal.	90 Gal.
Wheel Base	200"	216"	216"	228"	228"	228"	228"
Front GAWR	7,000 lbs.	7,000 lbs.	7,000 lbs.	7,000 lbs.	7,000 lbs.	7,000 lbs.	7,000 lbs.
Rear GAWR	13,500 lbs.	13,500 lbs.	13,500 lbs.	13,500 lbs.	13,500 lbs.	13,500 lbs.	13,500 lbs.
GVWR	20,500 lbs.	20,500 lbs.	20,500 lbs.	20,500 lbs.	20,500 lbs.	20,500 lbs.	20,500 lbs.
GCWR*	25,500 lbs.	25,500 lbs.	25,500 lbs.	25,500 lbs.	25,500 lbs.	25,500 lbs.	25,500 lbs.
Approx. Unloaded	16,900 lbs.	17,396 lbs.	16,855 lbs.	18,050 lbs.	18,056 lbs.	18,181 lbs.	18,156 lbs.

Kountry Aire® Class A Insulation "R" Values

Roof	Sidewalls	Floor
R25	R12	R12

N T R Y A I R E

F I F T H W H E E L



Option 8k560

*Throughside Aisle Bath
(N/A Codes States)*

Available in Models:

34RKSA • 36RLSA • 38KSSA
39BRSK • 40RLFk

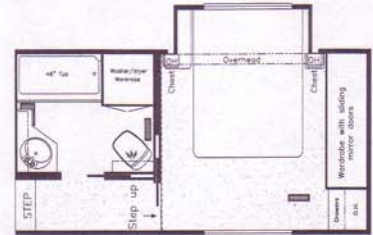


Option 8k561

*Honeymoon Suite w/Throughside Aisle
(N/A Codes States)*

Available in Models:

34RKSA • 36RLSA • 38KSSA • 39BRSK
40RLFk



Option 8m720

*Cabover Slideout w/Throughside Aisle
(N/A Codes States)*

Available in Models:

34RKSA • 36RLSA • 38KSSA • 39BRSK
40RLFk



Option 8k994

Honeymoon Suite w/Sliding Doors

Available in Models:

34RKWB • 36RDDs • 36RDSK • 36RKLD
36RKWB • 36RLDS • 36RLSK • 36SKDS
38KSWB • 39BRCK • 39RLSE • 39SKDS
40CKDA • 40DKLS



Option 8k995

Honeymoon Suite w/Sliding Doors

Available in Models:

34RKSA • 36RLSA • 38KSSA
39BRSK • 40RLFk

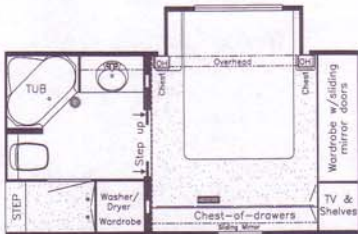


Option 8m617

Cabover Slideout w/Sliding Doors

Available in Models:

34RKWB • 36RDDs • 36RDSK • 36RKLD
36RKWB • 36RLDS • 36RLSK • 36SKDS
38KSWB • 39BRCK • 39RLSE • 39SKDS
40CKDA • 40DKLS



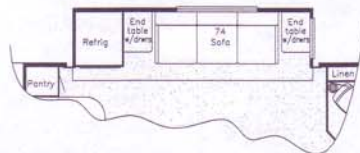
Option 8m438

Cabover Slideout

w/Dresser Center & Sliding Doors

Available in Models:

34RKSA • 36RLSA • 38KSSA • 39BRSK
40RLFk



Option 8k540

Washer/Dryer Wardrobe

Delete w/Larger Slideout

Available in Model:

32RKSS





Option 8p160
Unenclosed Stool Room

Available in Models:
34RKWB • 36RDDS • 36RDSK • 36RKLD
36RKWB • 36RLDS • 36RLSK • 36SKDS
38KSWB • 39BRCK • 39RLSE • 39SKDS
40CKDA • 40DKLS



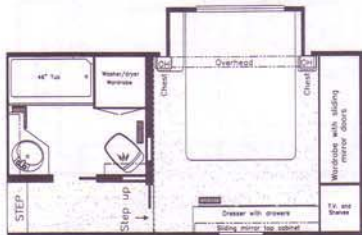
Option 8p180
Enclosed Stool Room w/Straight Shower

Available in Models:
33RKWD • 33WRKD • 34RDCK • 34RLDK
34RLWB • 36KSWB

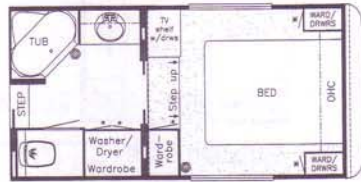


Option 8k370
Upper/Lower Bookcase ilo Desk

Available in Models:
34RLDK • 36RLDS • 36RLSA
36SKDS • 39SKDS

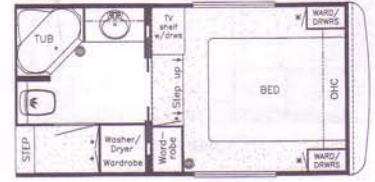


Option 8m740
Cabover Slideout
w/Dresser Center & Throughside Aisle
(N/A Codes States)
Available in Models:
34RKSA • 36RLSA • 38KSSA • 39BRSK
40RLFK



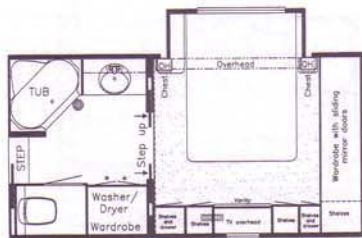
Option 8k990
Sliding Doors ilo Bifold

Available in Models:
34RKWB • 36RDDS • 36RDSK • 36RKLD
36RKWB • 36RLDS • 36RLSK • 36SKDS
38KSWB • 39BRCK • 39RLSE • 39SKDS
40CKDA • 40DKLS

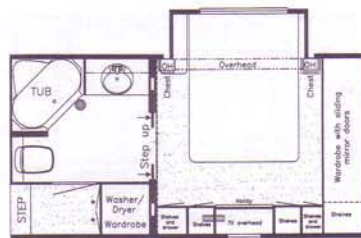


Option 8k991
Sliding Doors ilo Bifold

Available in Models:
34RKSA • 36RLSA • 38KSSA • 39BRSK
40RLFK



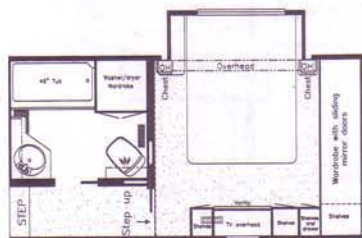
Option 8m397
Cabover Slideout
w/Vanity Center & Sliding Doors
Available in Models:
34RKWB • 36RDDS • 36RDSK • 36RKLD
36RKWB • 36RLDS • 36RLSK • 36SKDS
38KSWB • 39BRCK • 39RLSE • 39SKDS
40CKDA • 40DKLS



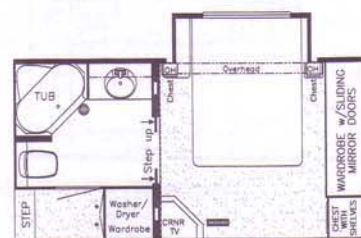
Option 8m398
Cabover Slideout
w/Vanity Center & Sliding Doors
Available in Models:
34RKSA • 36RLSA • 38KSSA • 39BRSK
40RLFK



Option 8m437
Cabover Slideout
w/Dresser Center & Sliding Doors
Available in Models:
34RKWB • 36RDDS • 36RDSK • 36RKLD
36RKWB • 36RLDS • 36RLSK • 36SKDS
38KSWB • 39BRCK • 39RLSE • 39SKDS
40CKDA • 40DKLS



Option 8m730



Option 8m618



Option 8p091
Cover Shower ilo Tub

ENTRY AIR

FIFTH WHEEL



Option 8k340

Honeymoon Suite

Available in Models:

34RKWB • 36RDDS • 36RDSK • 36RKLD
36RKWB • 36RLDS • 36RLSK • 36SKDS
38KSWB • 39BRCK • 39RLSE • 39SKDS
40CKDA • 40DKLS

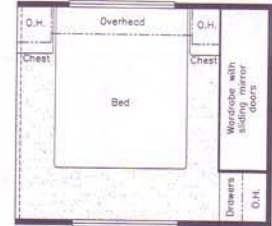


Option 8k341

Honeymoon Suite

Available in Models:

34RKSA • 36RLSA • 38KSSA
39BRSK • 40RLFK

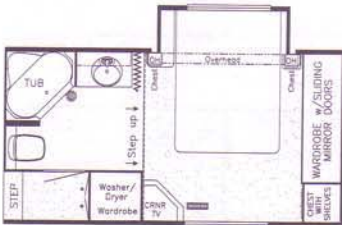


Option 8k010

Honeymoon Suite

Available in Models:

32RKSS • 33RKWD • 33WRKD • 34RDCK
34RLDK • 34RLWB • 36KSWB



Option 8m611

Cabover Slideout

Available in Models:

34RKSA • 36RLSA • 38KSSA
39BRSK • 40RLFK

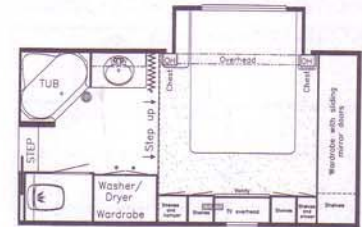


Option 8m380

Cabover Slideout

Available in Models:

32RKSS • 33RKWD • 33WRKD • 34RDCK
34RLDK • 34RLWB • 36KSWB

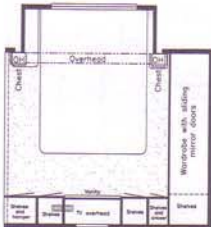


Option 8m390

Cabover Slideout w/Vanity Center

Available in Models:

34RKWB • 36RDDS • 36RDSK • 36RKLD
36RKWB • 36RLDS • 36RLSK • 36SKDS
38KSWB • 39BRCK • 39RLSE • 39SKDS
40CKDA • 40DKLS

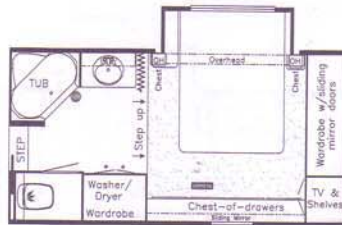


Option 8m660

Cabover Slideout w/Vanity Center

Available in Models:

32RKSS • 33RKWD • 33WRKD • 34RDCK
34RLDK • 34RLWB • 36KSWB

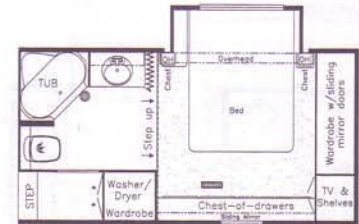


Option 8m430

Cabover Slideout w/Dresser Center

Available in Models:

34RKWB • 36RDDS • 36RDSK • 36RKLD
36RKWB • 36RLDS • 36RLSK • 36SKDS
38KSWB • 39BRCK • 39RLSE • 39SKDS
40CKDA • 40DKLS



Option 8m431

Cabover Slideout w/Dresser Center

Available in Models:

34RKSA • 36RLSA • 38KSSA
39BRSK • 40RLFK

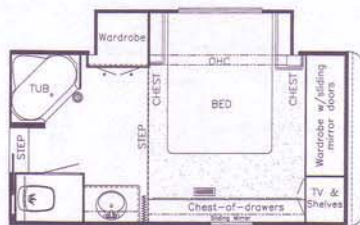


Option 8m620

Large Cabover Slideout w/Vanity Center

Available in Models:

(N/A Codes States)



Option 8m621

Large Cabover Slideout w/Dresser Center

Available in Models:

(N/A Codes States)

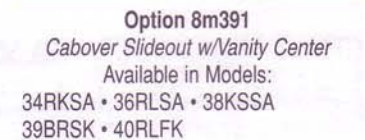
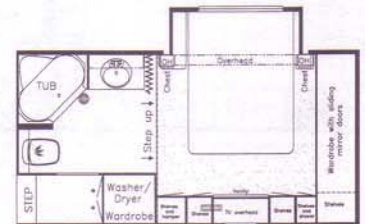
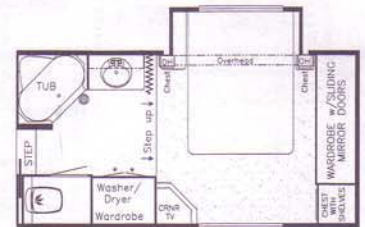
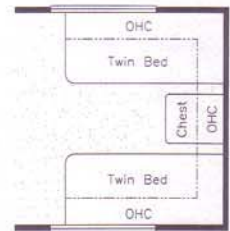


Option 8p090

Corner Shower Ito Tub

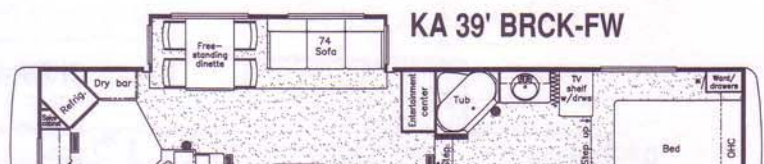
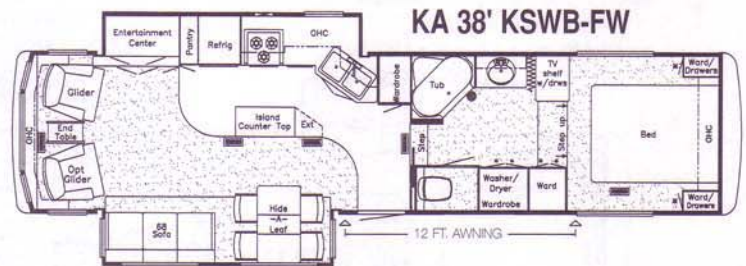
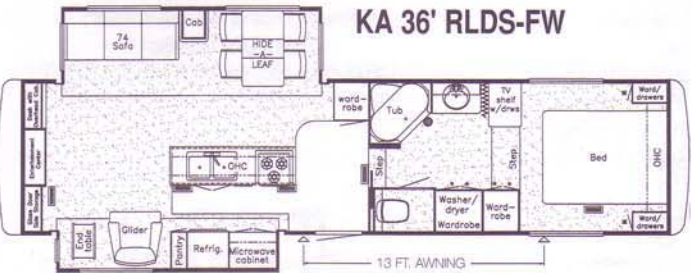
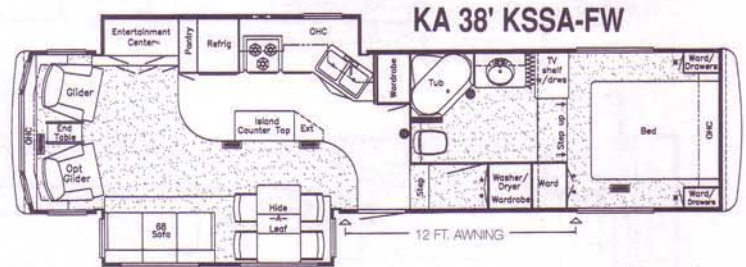
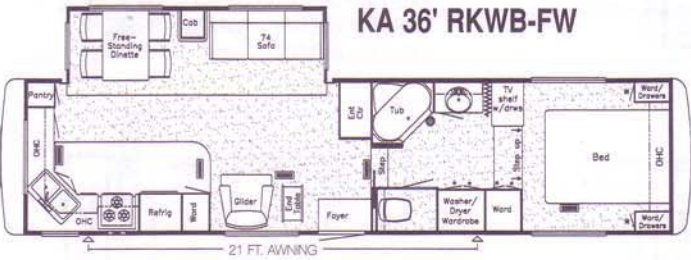
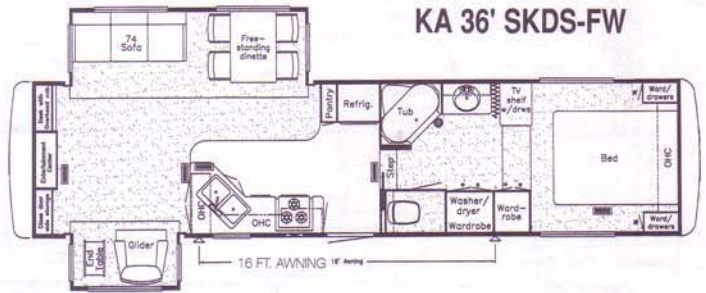
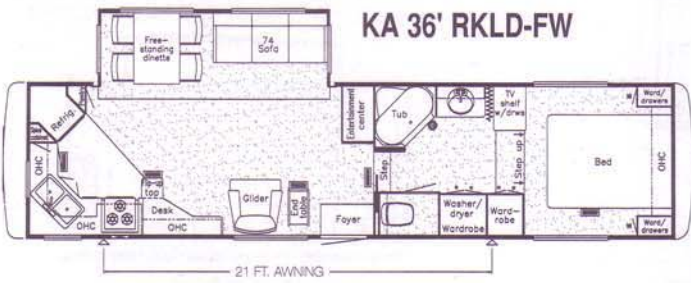
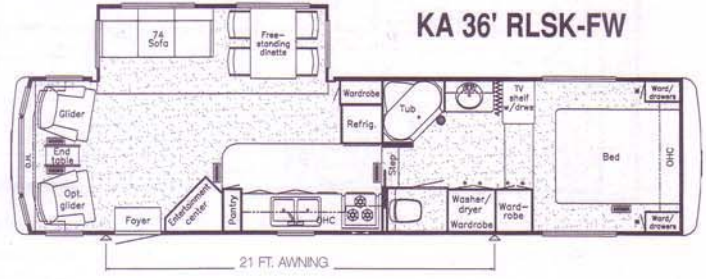
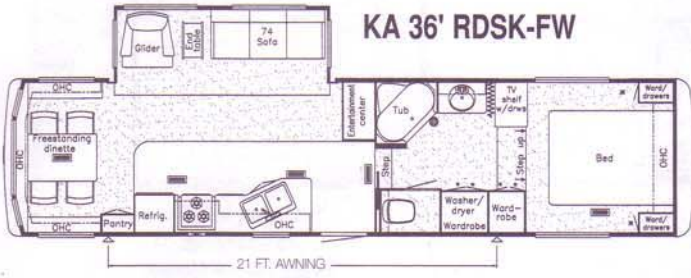
Available in Models:

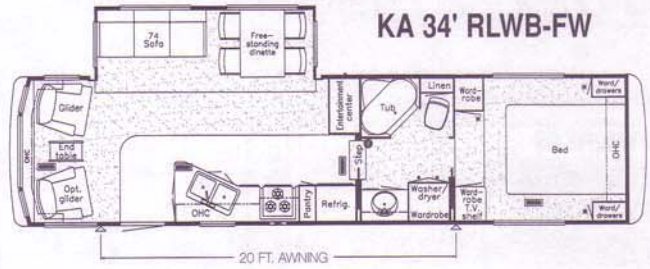
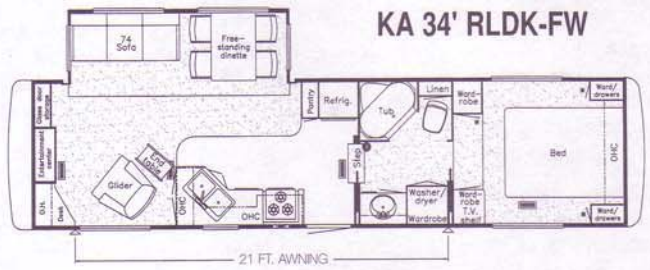
34RKWB • 36RDDS • 36RDSK • 36RKLD



NTRY AIRE

FIFTH WHEEL





KOUNTRY AIRE

FIFTH WHEEL

OPTIONS

Air Conditioning & Heating

- Air Conditioner Brisk Air 13.5M BTU (extra) 95 lbs.
- Air Conditioner Brisk Air 15M BTU (extra) 100 lbs.
- Air Conditioner Brisk Air 15M BTU in Place of 13.5M 5 lbs.

Appliances & Accessories

- Dishwasher (33 RKWB, WRKD, 34 RKSA, RKWB, 36 KSWB, RKWB 38 RLDS,) 75 lbs.
- Icemaker Added to Dometic Refrigerator (except 32 RKSS, 36 RDDS, RLDS) 5 lbs.
- Microwave Oven 22" (except 36 KSWB, 38 KSSA, KSWB, 39 BRCK, BRSK) 31 lbs.
- Microwave Oven Convection 30" w/3-Burner Hot Plate (except 36 RDDS) 42 lbs.
- Refrigerator Dometic Double Door 1062 (10 cu. ft.) 91 lbs.
- Washer/Dryer Prep 22 lbs.
- Washer/Dryer Sears 232 lbs.
- Water Heater 10 Gal. Gas/Electric w/Direct Spark Ignition 0 lbs.

Cabinets & Furniture

- Cabinetry Cherry Hardwood w/Raised Panel Doors 0 lbs.
- Cabinetry Frosted Maple Hardwood 0 lbs.
- Chair Flexsteel Leather/Vinyl Glider/Recliner - Leather (extra) 10 lbs.

Approx. Weight

- Chair Flexsteel Leather/Vinyl Glider/Recliner in Place of Standard 10 lbs.
- Dinette Table Hidden Leaf in Place of Free Standing Table 50 lbs.
- Sofa Cocktail Table w/Beveled Glass Top 85 lbs.
- Sofa Flexsteel Hide-A-Bed in Place of Standard (except 36 KSWB, 38 KSSA) 27 lbs.

Chassis Features

- Tandem Axle Dual Wheels w/Rubber Suspension & 16" Frame (33 RKWB, 36 RDSK, KSWB, 462 lbs.
- Tandem Axle Dual Wheels w/Rubber Suspension (36 RDDS) 212 lbs.

Electrical Features

- Generator 6.5 KW Onan w/Automatic Changeover & Battery 297 lbs.
- Generator Prep (automatic changeover & carbon monoxide detector) 1 lbs.
- Lights Exterior Security (1 on each side) 2 lbs.
- Solar Prep (12 volt wire from roof to battery compartment) 1 lbs.

Exterior Features

- Jacks Stabilizers 12 Volt Power Twins A&E in Place of Standard (1 pair) 20 lbs.
- Roof & Top Wrap Gel-Coated Fiberglass w/1/4" Foam Insulation 2 lbs.
- Roof Rack & Ladder 4 lbs.

- Stone Guard Pull Down Vinyl Recessed in Front Fiberglass Cap 15 lbs.

Interior Features

- Floor Covering, Ceramic Tile in Bath Area 75 lbs.
- Floor Covering, High Pressure Laminated Simulated Plank in Kitchen & Foyer 30 lbs.

Plumbing / Bath Features

- Water Filtering System w/Drink Dispenser (kitchen) 5 lbs.

Construction Features

- CSA Approval for Canadian Dealers Only 0 lbs.

Windows, Awnings, & Vents

- Awning, Side A&E 9000 128 lbs.
- Awning, Window A&E 9000 (only off door side) 5 lbs.
- Windows Safety Glass Dark Tinted 0 lbs.
- Windows Safety Glass Double Pane, Dark Tinted 110 lbs.

Kountry Aire® Fifth Wheel Insulation "R" Values

Roof	Sidewalls	Floor
R25	R12	R26

Kountry Aire® Fifth Wheel Sizes & Capacities

Unit	Approx. Length	Approx. Height	Approx. Width	Approx. Weight	Approx. Hitch	Fresh Water	Grey Water	Sewage Water	Heating Cap.	Approx. Hitch Height
KAFW32RKSS	32'-11"	11'-11"	101"	11,900 lbs	1,900 lbs	68 Gal	84 Gal	42Gal	42,000	47"
KAFW33RKWD	34'-5"	11'-11"	101"	11,550 lbs	1,850 lbs	100 Gal	50 Gal	50 Gal	42,000	47"
KAFW33WRKD	34'-5"	11'-11"	101"	11,550 lbs	1,850 lbs	100 Gal	50 Gal	50 Gal	42,000	47"
KAFW34RDCK	35'-8"	11'-11"	101"	11,600 lbs	1,975 lbs	100 Gal	50 Gal	50 Gal	42,000	47"
KAFW34RKSA	35'-10"	11'-11"	101"	11,700 lbs	2,100 lbs	100 Gal	50 Gal	50 Gal	42,000	47"
KAFW34RKWB	35'-10"	11'-11"	101"	11,700 lbs	2,100 lbs	100 Gal	50 Gal	50 Gal	42,000	47"
KAFW34RLDK	35'-8"	11'-11"	101"	11,850 lbs	1,900 lbs	100 Gal	50 Gal	50 Gal	42,000	47"
KAFW34RLWB	35'-8"	11'-11"	101"	11,850 lbs	1,900 lbs	100 Gal	50 Gal	50 Gal	42,000	47"
KAFW36KSWB	36'-6"	11'-11"	101"	13,500 lbs	2,900 lbs	100 Gal	50 Gal	50 Gal	55,000	47"
KAFW36RDDS	37'-2"	11'-11"	101"	13,500 lbs	2,700 lbs	100 Gal	50 Gal	50 Gal	55,000	47"
KAFW36RDSK	37'-2"	11'-11"	101"	12,770 lbs	2,680 lbs	100 Gal	50 Gal	50 Gal	55,000	47"
KAFW36RKLD	37'-2"	11'-11"	101"	12,675 lbs	2,535 lbs	100 Gal	50 Gal	50 Gal	55,000	47"
KAFW36RKWB	37'-2"	11'-11"	101"	12,675 lbs	2,660 lbs	100 Gal	50 Gal	50 Gal	55,000	47"
KAFW36RLDS	37'-2"	11'-11"	101"	14,100 lbs	2,800 lbs	100 Gal	50 Gal	50 Gal	55,000	47"
KAFW36RLSA	37'-2"	11'-11"	101"	12,770 lbs	2,680 lbs	100 Gal	50 Gal	50 Gal	55,000	47"
KAFW36RLSK	37'-2"	11'-11"	101"	12,770 lbs	2,600 lbs	100 Gal	50 Gal	50 Gal	55,000	47"
KAFW36SKDS	37'-2"	11'-11"	101"	13,300 lbs	2,660 lbs	100 Gal	50 Gal	50 Gal	55,000	47"
KAFW38KSSA	37'-11"	11'-11"	101"	13,750 lbs	2,750 lbs	100 Gal	50 Gal	50 Gal	55,000	47"
KAFW38KSWB	37'-11"	11'-11"	101"	13,750 lbs	2,750 lbs	100 Gal	50 Gal	50 Gal	55,000	47"
KAFW39BRCK	39'-2"	11'-11"	101"	13,000 lbs	2,080 lbs	100 Gal	50 Gal	50 Gal	55,000	47"
KAFW39BRSK	39'-2"	11'-11"	101"	13,000 lbs	2,080 lbs	100 Gal	50 Gal	50 Gal	55,000	47"
KAFW39RLSE	39'-2"	11'-11"	101"	13,750 lbs	2,340 lbs	100 Gal	50 Gal	50 Gal	55,000	47"
KAFW39SKDS	39'-2"	11'-11"	101"	13,750 lbs	2,340 lbs	100 Gal	50 Gal	50 Gal	55,000	47"

STANDARDS

Air Conditioning & Heating

- Air Conditioner Central Brisk Aire 13.5M BTU (1)
- Heat In Floor Ducted
- LP Gas Bottles 2-40 lb. w/Automatic Regulator & See Level Gauges On Slides
- LP Leak Detector

Appliances & Accessories

- Cable TV Connection
- Ceiling Fan
- Microwave Prep
- Range Cover Bifold Corian
- Range Cover Laminated w/Matching Countertop Material
- Range Hood w/Light & Fan (except 36 RLDS)
- Range Recessed Wedgewood 3-Burner w/Black Glass Oven-Door
- Refrigerator Dometic Royale 3862 (8 cu. ft.)
- Refrigerator Front Framed Hardwood Raised Panel
- Satellite Dish Prep Only - w/RG 6 Coaxial, Phone/TV Jack & 110 Volt Recept

- Stereo AM/FM Cassette w/Clock
- Telephone Connection w/1 Phone Jack
- TV Antenna w/Power Booster & 2 Jacks
- TV-Jack for Exterior Use on Door Side
- VCR Prep w/TV Video Switch
- Water Heater 10 Gal. Gas/Electric w/Reigniter

Cabinets & Furniture

- Cabinetry Oak Hardwood w/Raised Double Arched Panel Doors
- Chair End Table w/Beveled Glass Top (except 32 RKSS, 33 WRKD)
- Chair-Flexsteel Swivel Glider/Recliner (except 32 RKSS, 40 DKLS)
- Countertop Corian in Kitchen w/Recessed Stainless Steel Sink
- Countertop Corian w/Integrated Lavatory Bowl in Bath
- Dinette Table w/Extension Top & 4 Upholstered Chairs (36 KSWB, RLDS, 38 KSSA, KSWB)
- Dinette Table w/Glass Top & 4 Upholstered Chairs (except 36 KDWB, RLDS, 38 KSSA, KSWB)
- Drawers w/Metal Guides & Side Rollers
- Molded Silverware Divider Tray

- Pull-out Pantry (except 32 RKSS, 33 RKWB, WRKD, 34 RDCK, RKSA, RKWB, 36 RDSK, RKLD, RKWB, 39 BRCK, BRSK)

- Sofa Flexsteel Hide-A-Bed (36 KSWB, 38 KSSA, KSWB, 40 CKDA)
- Sofa Flexsteel Magic Bed (except 36 KSWB, 38 KSSA, KSWB, 40 CKDA, DKLS, RLFK)
- Sofa Flexsteel Sectional w/68" Hide-A-Bed & Incliner (40 DKLS, RLFK)

Chassis Features

- Easy Lube Equalizers
- Frame Size 12" I-Beam & Molded Wrap Maximum Storage (except 36 KSWB, RDDS, RLDS, SKDS, 38 KSSA, KSWB, 39 RLSE, SKDS)
- Frame Size 16" I-Beam & Molded Wrap Maximum Storage (36 KSWB, RDDS, RLDS, SKDS, 38 KSSA, KSWB, 39 RLSE, SKDS)
- Shock Absorbers
- Skid Bars for Rear Bottom Protection
- Spare Tire

Electrical Features

- Battery Disconnect Switch
- Battery, Thermoil (2-12 volt) On Pull-out Tray
- Converter 75 AMP w/Charger
- Electrical Service 50 AMP
- Lighting Fluorescent Recessed in Ceiling & Overhead Cabinets
- Lights in Raised Bath Floor Storage Area Compartment w/Door Switches
- Lights in Wardrobes w/Automatic Switches
- Lights Interior Courtesy
- Midship Side Turn Signals
- Receipts 110 Volt w/Ground Fault Interrupter (interior & exterior)

Exterior Features

- 12 Volt Powered Front Jacks, Rated at 8000 lbs. w/Independent Operation
- Exterior Front & Rear Gel-Coated Fiberglass End Caps
- Exterior Sides Gel-Coated Fiberglass
- Exterior Storage in Rear Cap (except 34 RDCK, RLWB, 36 KSWB, RDDS, RDSK, RLSK, 38 KSSA, KSWB, 39 RLSE, 40 DKLS, RLFK)
- Jacks Stabilizer (1 pair)
- Roof Rubber w/9MM Decking
- Slideout Large w/Patented Flat Floor (see floorplans for availability & layout)
- Snaps for Fifth Wheel Jacks
- Stabilizer for Fifth Wheel Pin (built-in)
- Storage Drawer in Front Compartment Area

Interior Features

- Bedspread Quilted w/Matching Shams & Accent Pillow
- Ceiling Woven Soft Touch
- Decorative Wall Clock & Mirror
- Floor Covering, Carpet Staintech, 45 oz. 100% Nylon Plush Sewing

- Floor Covering, High Pressure Laminated 15" Tile in Kitchen & Foyer Area
- Hardwood Trim on Front of Slideout
- Sink Covers, 2
- Smoke Detector & 5 BC Fire Extinguisher
- Window Garnish - Residential Style (not available w/Dual Pane window option)
- Window Treatment Day/Night Pleated Shades & Lined Drapes
- Window Treatment Mini Blinds (kitchen)

Plumbing / Bath Features

- Bath Accessories Brass (1 each-towel bar, tissue holder, towel ring & robe hook)
- Faucet for Kitchen Sink Single Handle High Rise (Moen)
- Faucet for Shower & Lavatory Single Handle (Moen)
- Monitor Panel
- Sewage Holding Tank Rinse
- Stool China w/Spray Attachment
- Tub/Shower Fiberglass w/Enclosure
- Tub/Shower Wall Light
- Winterize Convenience Package (w/water heater bypass)

Construction Features

- Insulation Fiberglass R7 Sidewalls, R19 Floor & Roof
- Insulation Foam 5/8" Laminated in Sidewalls & Ceiling
- Rear Bumper w/Slideout Tray for Spare Tire
- Structure, Aluminum Sidewalls & Roof, 16" on Center
- Structure, Widebody
- Underbelly Enclosed Aluminum w/Laminated 5/8" Foam

Windows, Awnings & Vents

- Door Bell
- Exterior Lighted Acrylic Assist Handle (at main entrance door)
- Radius Entrance Door w/Deadbolt & Lighted Step
- Skylight in Bathroom w/Soft Shade
- Step Triple
- Vent 12 Volt in Bath Area w/Wall Switch
- Windows Radius Torque

Bedroom Features

- Bed Queen (60" X 80") w/Pillow Top Mattress
- Lifts for Convenient Storage Under Fixed Beds

Kountry Aire® Fifth Wheel Chassis Information

Unit	No. Axle	Axle Cap.	Tire	GAWR	GVWR
KAFW32RKSS	2	7,000 lbs	235-85-R16G	7,000 lbs	15,000 lbs
KAFW33RKWD	2	7,000 lbs	235-85-R16G	7,000 lbs	15,000 lbs
KAFW33WRKD	2	7,000 lbs	235-85-R16G	7,000 lbs	15,000 lbs
KAFW34RDCK	2	7,000 lbs	235-85-R16G	7,000 lbs	15,000 lbs
KAFW34RKSA	2	7,000 lbs	235-85-R16G	7,000 lbs	15,000 lbs
KAFW34RKWB	2	7,000 lbs	235-85-R16G	7,000 lbs	15,000 lbs
KAFW34RLDK	2	7,000 lbs	235-85-R16G	7,000 lbs	15,000 lbs
KAFW34RLWB	2	7,000 lbs	235-85-R16G	7,000 lbs	15,000 lbs
KAFW36KSWB	3	7,000 lbs	235-85-R16E	6,000 lbs	18,000 lbs
KAFW36RDDS	3	7,000 lbs	235-85-R16E	6,000 lbs	18,000 lbs
KAFW36RDSK	3	7,000 lbs	235-85-R16E	6,000 lbs	18,000 lbs
KAFW36RKLD	3	7,000 lbs	235-85-R16E	6,000 lbs	18,000 lbs
KAFW36RKWB	3	7,000 lbs	235-85-R16E	6,000 lbs	18,000 lbs
KAFW36RLDS	3	7,000 lbs	235-85-R16E	6,000 lbs	18,000 lbs
KAFW36RLSA	3	7,000 lbs	235-85-R16E	6,000 lbs	18,000 lbs
KAFW36RLSK	3	7,000 lbs	235-85-R16E	6,000 lbs	18,000 lbs
KAFW36SKDS	3	7,000 lbs	235-85-R16E	6,000 lbs	18,000 lbs
KAFW38KSSA	3	7,000 lbs	235-85-R16E	6,000 lbs	18,000 lbs
KAFW38KSWB	3	7,000 lbs	235-85-R16E	6,000 lbs	18,000 lbs
KAFW39BRCK	3	7,000 lbs	235-85-R16E	6,000 lbs	18,000 lbs
KAFW39BRSK	3	7,000 lbs	235-85-R16E	6,000 lbs	18,000 lbs
KAFW39RLSE	3	7,000 lbs	225-85-R16E	6,000 lbs	18,000 lbs
KAFW39SKDS	3	7,000 lbs	235-85-R16E	6,000 lbs	18,000 lbs

1998

KOUNTRY AIRE



KOUNTRY AIRE FIFTH WHEEL

SPECIFICATIONS

NTRY AIRE



[A] Push a button and your Kountry Aire® slideout moves effortlessly into place. Make a special note of our new upholstered dinette chairs with radiused woodbacks.

[B] The bedroom in the Kountry Aire® incorporates an abundance of storage room.

[C] The spacious cockpit of the Kountry Aire® Class A features large, leather/vinyl driver and passenger seats with 6-way power, power lumbar, adjustable arm rests and remote swivel.



1998 KOU

KOUNTRY AIRE
KOUNTRY AIRE
KOUNTRY AIRE
KOUNTRY AIRE



1998 KOUNTRY AIRE CLASS A MOTORHOME

KOUNTRY AIRE
KOUNTRY AIRE
KOUNTRY AIRE
KOUNTRY AIRE
KOUNTRY AIRE
KOUNTRY AIRE
KOUNTRY AIRE

As expansive as the country side. As exquisite as a luxury home. As stylish as a fine European motorcar. These descriptions may overstate the obvious but they illustrate the attributes of our new, generously sized, amenity-laden and sleek, gel-coated Kountry Aire® motorhomes. Folks who appreciate the wide-open spaces of the country will really lose themselves in the interior that's long

OUNTRY AIRE



[A]

[A] The decorative hardwood fascia that surrounds the slideout room is standard equipment for 1998 in this Kountry Aire® Diesel Pusher.

[B] An elegant hardwood hutch is adjacent to the dining area on some models.

[C] Corian® countertops are standard in both the kitchen and the bath in the Kountry Aire® Diesel Pusher.

[D] Fine hardwood cabinetry surrounds built-in appliances and provides plenty of storage space.



[B]



[C]



1998 KOU

KOUNTRY AIRE
KOUNTRY AIRE
KOUNTRY AIRE
KOUNTRY AIRE
KOUNTRY AIRE
KOUNTRY AIRE



1998 KOUNTRY AIRE DIESEL PU

KOUNTRY AIRE
KOUNTRY AIRE
KOUNTRY AIRE
KOUNTRY AIRE
KOUNTRY AIRE
KOUNTRY AIRE

A free spirit and the open road brings this Kountry Aire® Diesel Pusher Motorhome to life. Roomy and comfortable, the Kountry Aire® is truly a magnificent way to travel. Aerodynamically designed and beautifully equipped with the latest technological advancements and rich, luxurious furniture, the Kountry Aire®

NTRY AIRE



[A] The spacious slideout is home to an elegant custom designed sofa and a new style dinette with radiused chairs.

[B] There's an abundance of storage area plus a built-in vanity in this Kountry Aire® 5th Wheel model.

[C] Beautiful overhead cabinetry and custom night stands frame the queen size bed in this popular model.

[D] A custom designed sofa with matching throw pillows join stylish radiused wood bordered dinette chairs in this great Kountry Aire® slideout room.

[E] The entertainment center is built-in to beautiful hardwood cabinetry.

[F] An island kitchen is the focal point in this popular Kountry Aire® model.

[G] The bedroom in this Kountry Aire® 5th Wheel is a great example of Newmar's excellent floor plan design.



1998 KOU

Newmar's Kountry Aire® 5th Wheels for 1998 offer unmatched style, versatility, function and performance. But more important, each offers the quality that has made Kountry Aire® the most popular name in the 5th wheel market.

KOUNTRY AIRE
KOUNTRY AIRE
KOUNTRY AIRE



1998 KOUNTRY AIRE FIFTH WHEEL

