

# Discover the Newmar Difference.

*1998 Dutch Star Motorhomes*



*1998 Dutch Star® Class A Motorhome*



*1998 Dutch Star® Diesel Pusher Motorhome*



# Discover the Newmar Difference.

*1998 Dutch Star Class A Motorhomes*



*1998 Dutch Star® Class A Motorhome*



*1998 Dutch Star® Diesel Pusher Motorhome*

## ***Newmar Kountry Klub***

Don't forget to check out the Klub—the Newmar Kountry Klub, that is. All you need for eligibility is to be a proud owner of any of the fine Newmar recreational vehicles.

*Compliments of:*

We invite you to visit our state-of-the-art production facility in Nappanee, Indiana. Plant tours are offered at 10:00 a.m. and 1:00 p.m. Monday – Friday.



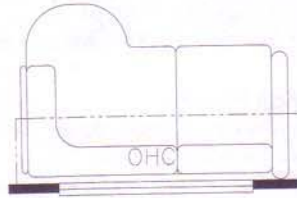
*An American Tradition of Excellence.*



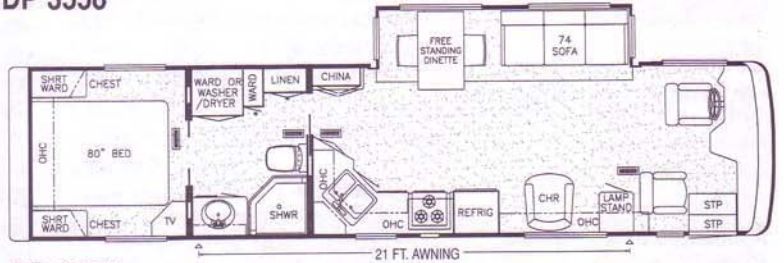


# 1998 Dutch Star Diesel Pusher Floor Plans & Options

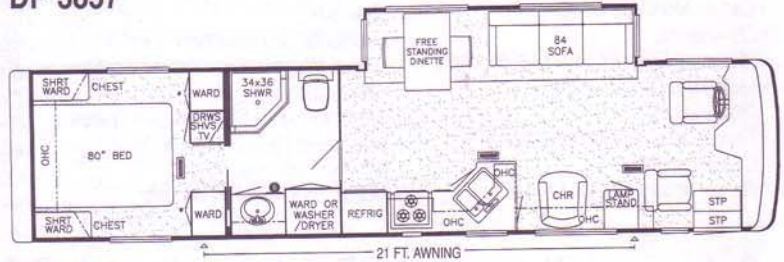
**Option 8K910**  
L-sofa 66" Leather/Vinyl  
w/incliner  
Available in Models:  
DP 3857 • 3858 • 3860  
3865 • 3883  
(not available w/center entry option)



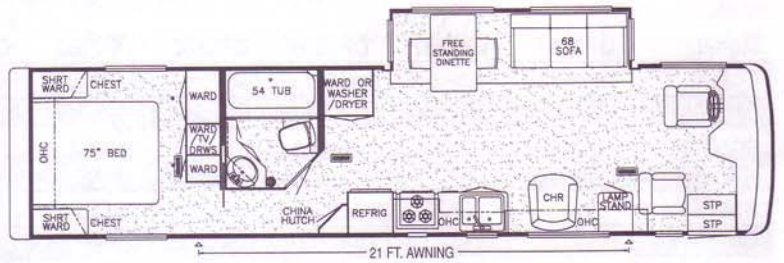
**DP 3558**



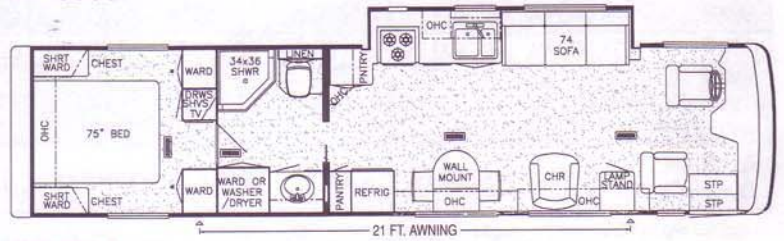
**DP 3857**



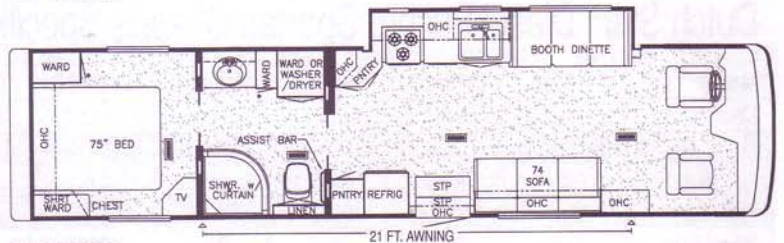
**DP 3858**



**DP 3860**



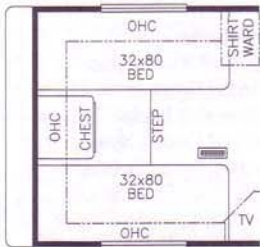
**DP 3865**



**DP 3866**



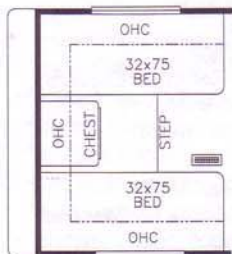
**DP 3866**



**Option 8K104**  
80" Twin Beds  
Available in Models:  
DP 3857 • 3883



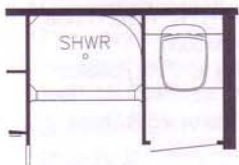
**Option 8K102**  
80" Twin Beds  
Available in Model:  
DP 3558



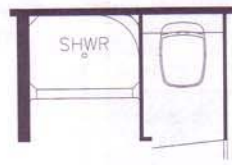
**Option 8K103**  
75" Twin Beds  
Available in Models:  
DP 3858 • 3860 • 3865



**Option 8K105**  
75" Twin Beds  
Available in Model:  
DP 3866

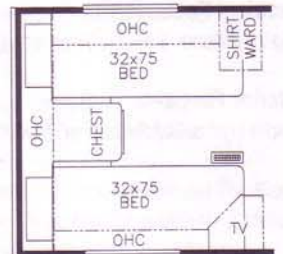
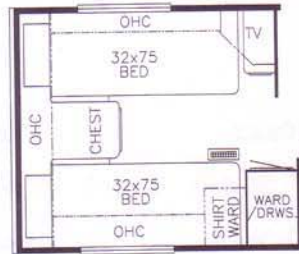
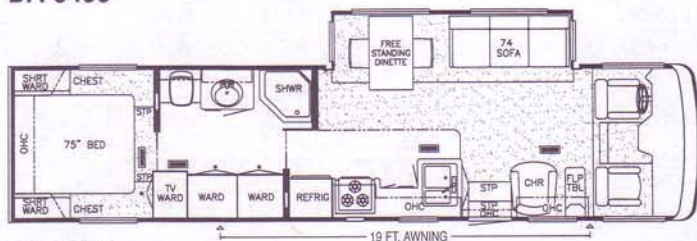
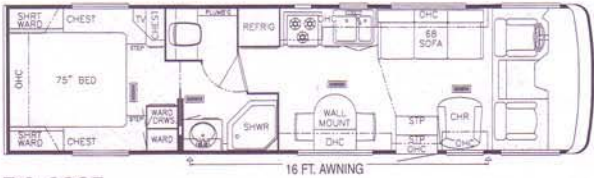


**Option 8P204**



**Option 8P203**

# 1998 Dutch Star Class A Motorhome Floor Plans & Options



**Option 8K088**  
75" Twin Beds  
Available in Model:  
DA 3205

**Option 8K090**  
75" Twin Beds  
Available in Models:  
DA 3256 • 3401 • 3450  
3451 • 3455



**Option 8K091**  
75" Twin Beds  
Available in Model:  
DA 3656

**Option 8K089**  
75" Twin Beds  
Available in Model:  
DA 3658







# Discover the Newmar Difference.

*1998 Dutch Star Motorhomes*



*1998 Dutch Star® Class A Motorhome*



*1998 Dutch Star® Diesel Pusher Motorhome*

*Specifications*



# Discover the Newmar Difference.

*1998 Dutch Star Motorhomes*



*1998 Dutch Star® Class A Motorhome*



*1998 Dutch Star® Diesel Pusher Motorhome*

## ***Newmar Kountry Klub***

Don't forget to check out the Klub—the Newmar Kountry Klub, that is. All you need for eligibility is to be a proud owner of any of the fine Newmar recreational vehicles.

We invite you to visit our state-of-the-art production facility in Nappanee, Indiana. Plant tours are offered at 10:00 a.m. and 1:00 p.m. Monday– Friday.

*Compliments of:*



*An American Tradition of Excellence.*



[A] The welded aluminum sidewall construction is built with 16" on center framing, providing the strongest and most durable construction possible.



[B] Newmar engineers are specially trained on the latest CAD systems to continually provide new and innovative approaches to their designs.



*An American Tradition of Excellence.*

[C] Five-eighths inch beaded foam is laminated to kraft paper and covered with interior paneling then is attached to the aluminum framed sidewalls.

Discover  
the  
Quality.



[D] A full coverage of fiberglass insulation completes the insulating process creating a composite R value as high as R22.

[E] High quality craftsmanship and attention to detail are a way of life in the our custom wood shop.



[F] Truss-style rafters are built 16" on center and central air conditioning duct work is incorporated into the design.

[G] Newmar's slideout technology is so revolutionary, there's a patent granted for the Newmar process. Having perfected this technology, the slideout floor will recess flat and flush into place with the existing floor.





[A] The slideout in the Dutch Star® Diesel Pusher features our patented mechanism that delivers the unit to its full extension and produces a flat-flush floor.



[B] An optional L-shaped leather sofa is sure to be a popular spot in your Dutch Star Diesel Pusher.



[C] Beautiful cabinetry and night stands are positioned conveniently on each side of the queen size walk-around bed.

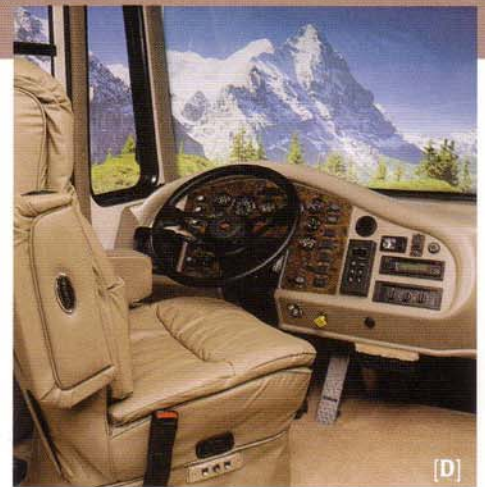


[D] A well planned dash area is home to larger, restyled driver and passenger seats.

[E] The Dutch Star Diesel Pusher has a spacious kitchen with your choice of three popular woodgrains: light honey oak, frosted maple or cherry.



# Discover the Diesel Pusher.





# Discover the Dutch Star.

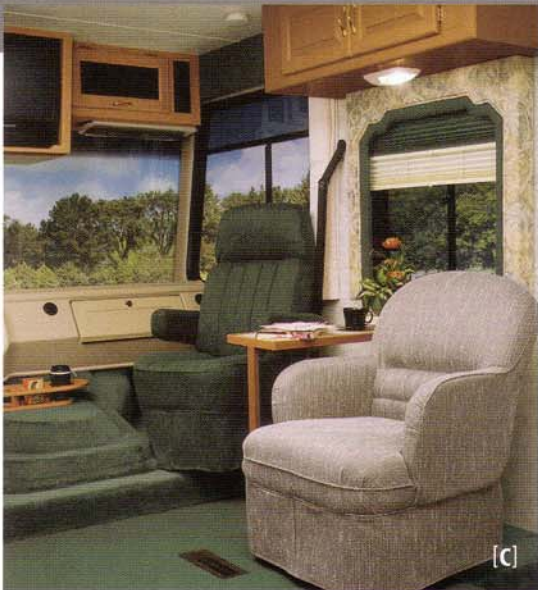
1998 Dutch Star Class A Motorhomes

[A] The standard patented flat-floor slideout is home to a beautiful dinette with new stylized chairs. The day/night pleated shades are also standard equipment.

[B] Solid surface counter tops are incorporated in the kitchen.

[C] The re-styled cab in the Dutch Star Class A was designed to offer maximum visibility.

[D] New, decorative wall lights add a special touch to the Dutch Star's master bedroom.





# Discover the Newmar Difference.

*1998 Dutch Star Motor-home*

What began as a vision in 1967 has matured into a way of life at Newmar. Our original objective was to provide a recreational vehicle living experience that was truly unmatched.

Today, our designers, engineers and members of our production staff clearly understand that Newmar owners are very discriminating buyers. In a few words, they expect more!

We "compromise nothing" to present our Dutch Star® Class A motorhomes. Our 1998 line-up boasts four new interiors and two exciting exterior graphic packages.

While you're sure to agree that these exciting models are beautiful, you will also be glad to know that they're built to Newmar's tradition of excellence, providing years of trouble-free performance.

