

Ultrasport Diesel Class A Motorhomes • 1998



Damon

ULTRASPORT Diesel Pusher

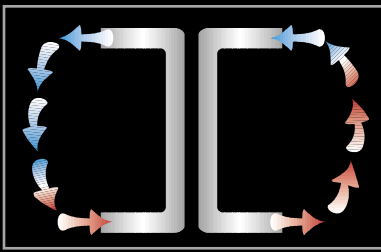


Think Big.

You've been around the country a few times. You know what to look for and where to look for it. And now you're ready to step up to the ultimate, the greatest degree of luxury, value, performance and driving comfort. Think big, think Ultrasport diesel pusher — with the pure driving power of a 275hp Caterpillar Diesel engine.

Model 3611 • Ashbury decor





Summer / Winter

Our exclusive Comfort Control Center™ improves on most roof-mounted RV air conditioning units. Dual 13,500 BTU central air conditioning units, combined with the well-insulated walls and ceiling, is part of our smartly-engineered system which circulates air and regulates temperatures inside your Ultrasport Motorhome. In winter, hot air is circulated up through floor ducts to keep you toasty warm; in summer, cold air is circulated down so you're always cool and comfortable.



Damon

s n r t ls

All of our exclusive Designer Details add up to one big difference in quality and value.

Amerock® genuine solid brass door pulls add a touch of class to every door and drawer in Ultrasport.

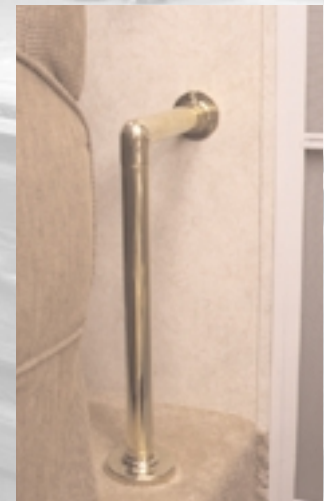
Exquisite residential-type lighting adds a homey touch.

Solid oak ends on cabinetry are crafted for long-lasting beauty.

In the kitchen, solid surface counter tops (optional) with back-splash coordinate with the stove top. Plus, large double-bowl porcelain sink and even a faucet with a sprayer hose will pamper the resident chef.

Our fabric-lining will reduce rattling in the overhead storage cabinets.

Solid brass hand rail (optional) is classy, and makes entering your Ultrasport Motorhome a breeze.



Roomy and comfortable are the first words that come to mind. This model features a reclining barrel chair with foot rest and a sofa with a large storage compartment underneath. Matching dinette fabric adds to the beauty of the Ultrasport. Large color TV features convenient remote control. Note the large, vista windows all around, with standard day/night shades and the oversized Euro-style, tinted windshield which affords maximum visibility.

ULTRASPORT Diesel Pusher



How to expand your domain.

With the simple touch of a button, our Super Slide-Out room will expand your already spacious Ultrasport A by over 26%. That's luxury at the push of a button.

Ultrasport's exclusive StepSaver™ kitchen is a model of efficiency, yet possesses loads of charm and class. Beautiful solid oak plank flooring, cathedral-cut, raised-panel oak cabinet doors and large double-door refrigerator with solid oak front are just a few of the standard features this luxury motorhome offers.

Model 3611 • Ashbury decor



Your Ultrasport Diesel pusher comes equipped with a standard hitch for convenient towing of a car or boat.

Model 3670 • Buckingham decor



Our Super Slide-Out includes a free-standing couch and dinette that can be rearranged in a variety of ways to accommodate your entertainment needs. Ample overhead storage and mirrored fascia with oak trim add to the beauty of the additional room provided with your slide-out.

The luxurious bedroom is perfect to snuggle up in at the end of a long day. The lovely decorator-inspired bedspread coordinates with lambrequins and pleated day/night shades. There's plenty of storage space in the solid oak door wardrobes and cabinets, plus even more cedar-lined storage under the bed. Note the beautiful diamond-cut, beveled mirror above the designer headboard.

Model 3611 • Ashbury decor



ULTRASPORT Diesel Pusher



Home Sweet Home.

You know that the many comforts that make a house a home should also be found in the motorhome of your choice. And everywhere you look in the Ultrasport A you'll find built-in comfort, homey ambiance and that special feeling of being in your own "home, sweet home."

Model 3611 • Ashbury decor

Cooking is a pleasure in this spacious StepSaver™ kitchen with features including oak panel refrigerator, carousel-style microwave convection oven and large 3-burner range. Double metal drawer guides, large double-bowl porcelain sink with single-lever sprayer faucet and beautiful solid-surface counter tops with mirrored backsplash are luxurious touches to make meal preparation an enjoyable experience. Ultrasport's cathedral-cut, raised-panel oak cabinet doors have tongue-and-groove joints and are carefully crafted to provide superior quality. The cabinets are screwed in, not stapled like the some competitors', for supreme strength and stability.



At this point, the single-piece laminated wall stops. Everything below this point is hinged to maximize exterior storage. Storage doors are laminated fiberglass for strength and reliability. Plus they're designed for easy opening with convenient push button locks.

Model 3670 • Ashbury decor

This charming bathroom is a model of efficiency and contemporary styling. Features include lavatory, hardwood-framed medicine cabinet and mirror, countertops, plus a tall, spacious shower with shower door and skylight.



A PLACE FOR EVERYTHING.

Storage is everything when traveling, so we do everything we can to maximize it whenever possible.

Our SpaceSaver™ kitchen features an efficient oak pantry that slides out for your convenience.

Our exterior pass-through compartment offers you a big 150 cubic feet of storage space. It's made of high density polyethylene rotocast materials which won't rust and can take the knocks. Standard gas piston hinges conveniently keep doors open for easy loading and unloading. There's even a drain for easy cleaning. Plus, the compartment is heated for your convenience in cold weather, and lighted so you can pack or unpack at night.



ULTRASPORT Diesel Pusher



Value by Design.

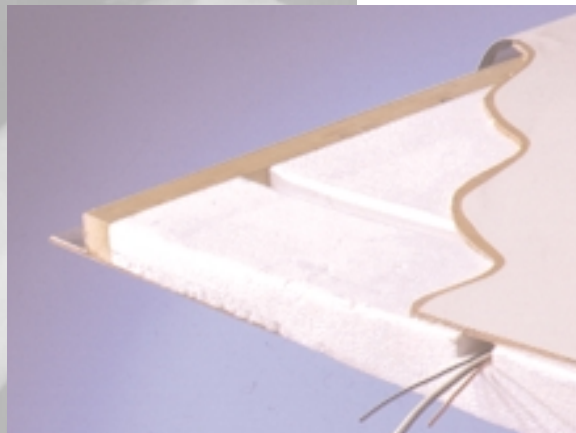
The best-of-all-possible worlds, Ultrasport Diesel Pusher is the pride of the Damon line. There's much less road noise since the engine is in the rear, plus there's no engine cover in the cockpit area to trip over. The ride is smoother, the towing and steering are easier, and the storage is greater. And when you combine it all with the power and driveability of a diesel pusher, it just doesn't get any better. Dollar for dollar, mile for mile, you simply can't buy a better motorhome.



Ultrasport's unique OneFlush™ system really simplifies the job of emptying waste tanks. We also offer a sprayer hose for easy clean-up.

Our laminated, crowned roof is constructed with aluminum framework and luan decking and combines with up to 3" of expanded polystyrene block foam insulation for increased energy efficiency.

This super-solid assembly is then covered with a one-piece seamless rubber roof specifically formulated for exposure to the sun and elements and comes with a 12-year warranty.



Radius entry door with white anodized frame provides luxury and extended use.

Fully-integrated front fiberglass cap displays luxury and style.

Aluminum framing prevents leakage and increases strength.

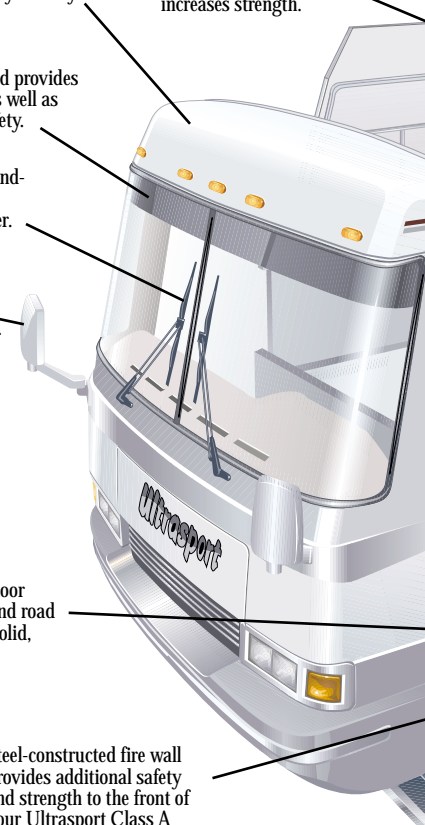
Your tinted front windshield provides a barrier from solar heat as well as reduces glare for added safety.

Pantographic, dual-arm windshield wipers offer greater visibility in adverse weather.

Front-mounted, convex exterior mirror for superior visibility and the user-friendly remote control offers precision adjustments at your fingertips.

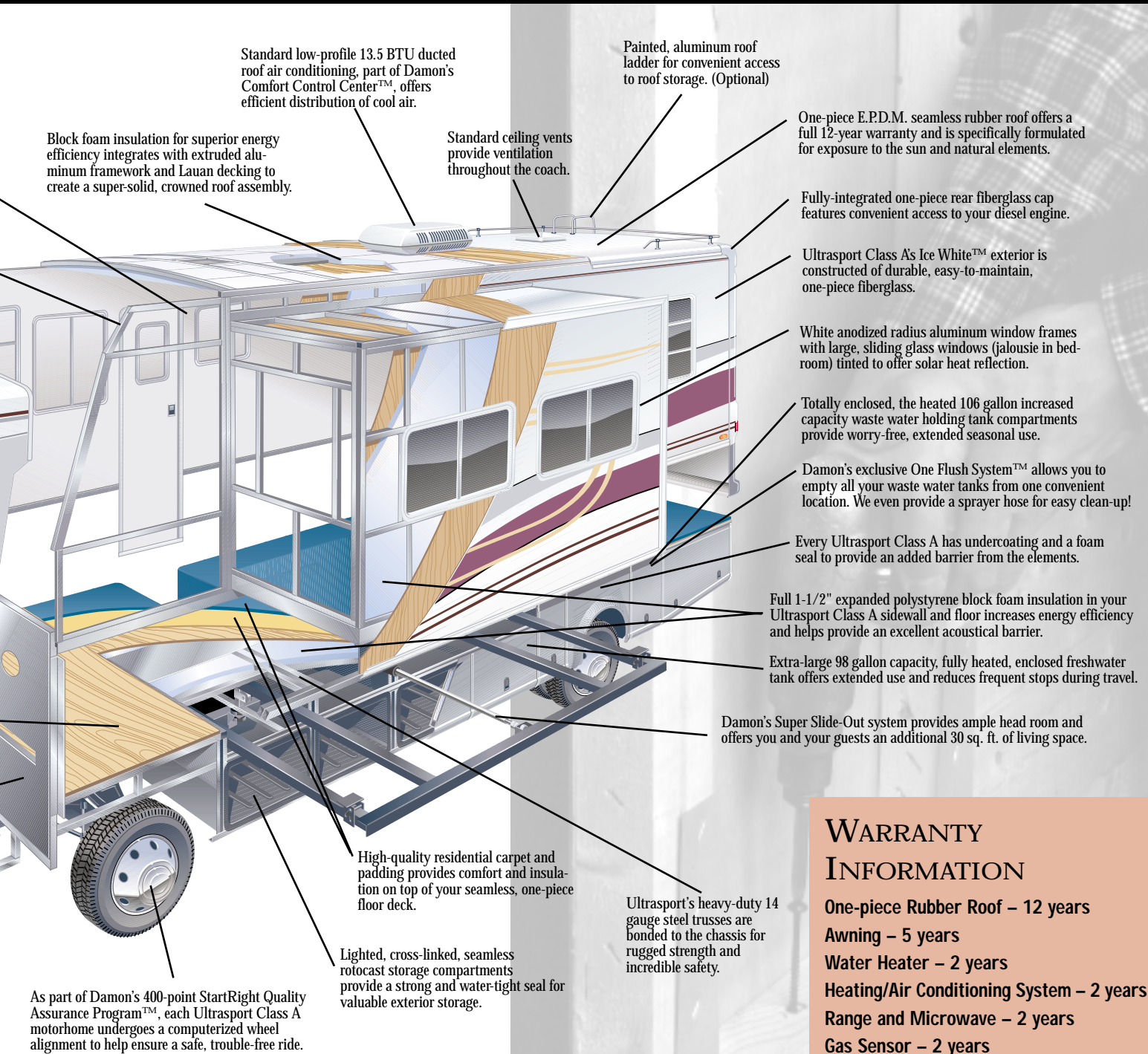
Seamless, one-piece 1/2" floor decking reduces squeaks and road noise. No seams means a solid, level floor.

Steel-constructed fire wall provides additional safety and strength to the front of your Ultrasport Class A motorhome.



Start
ht
u l t y
ssur nc

The StartRight Quality Assurance™ program is our strenuous 400-point inspection test. It's performed on every Ultrasport Diesel Pusher before it leaves the factory — so every Damon RV passes our test before it passes yours.



WARRANTY INFORMATION

- One-piece Rubber Roof – 12 years**
- Awning – 5 years**
- Water Heater – 2 years**
- Heating/Air Conditioning System – 2 years**
- Range and Microwave – 2 years**
- Gas Sensor – 2 years**
- Brake System – 2 years**
- Toilet – 2 years**
- Power Converter – 2 years**
- TV Antenna – 2 years**
- Everything Else – 1 year**

ULTRASPORT Diesel Pusher



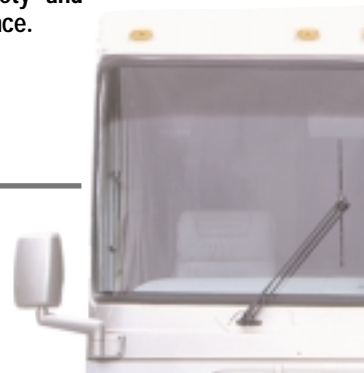
Pure driving (and riding) experience

Sheer driving excitement and a smooth, comfortable ride are two qualities you usually don't associate together. But you get plenty of both with the Ultrasport A diesel pusher. The excitement comes from the finest Caterpillar diesel engines, and the comfort comes from Damon's superior design, which assures a smoother, more comfortable ride than you ever thought possible in an RV.



Stepping into the Ultrasport's cockpit is like slipping into ultimate luxury. The European-inspired cockpit wraps around you, and everything is designed for style and comfort. The dash is burl wood; instruments are all within easy reach; other features include automatic transmission, power steering and cruise control to lessen the burden of long-distance driving. Six-way power reclining captain chair is made of supple leather (optional) for softness and comfort. Chairs swivel to take advantage of extra cockpit space when camping.

Panoramic tinted front windshield allows for maximum visibility of the road ahead. Pantographic dual-arm windshield wipers and remote-controlled dual forward-mount side mirrors add more safety and convenience.



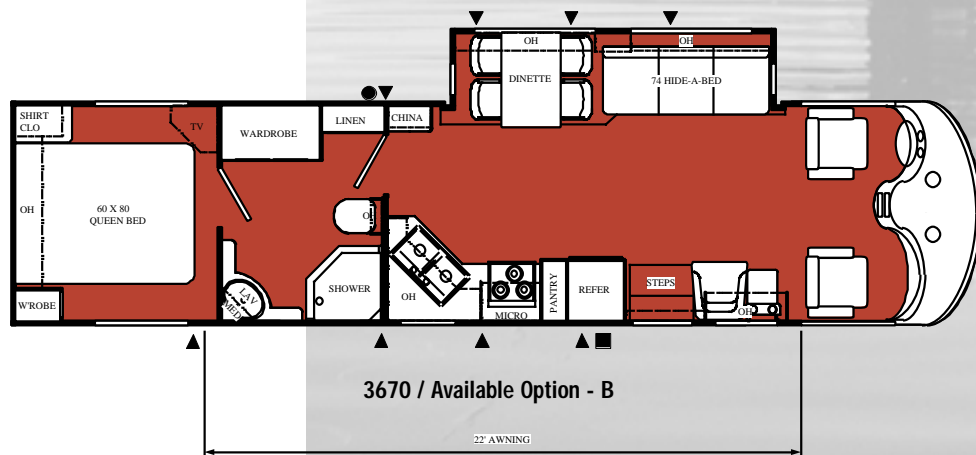
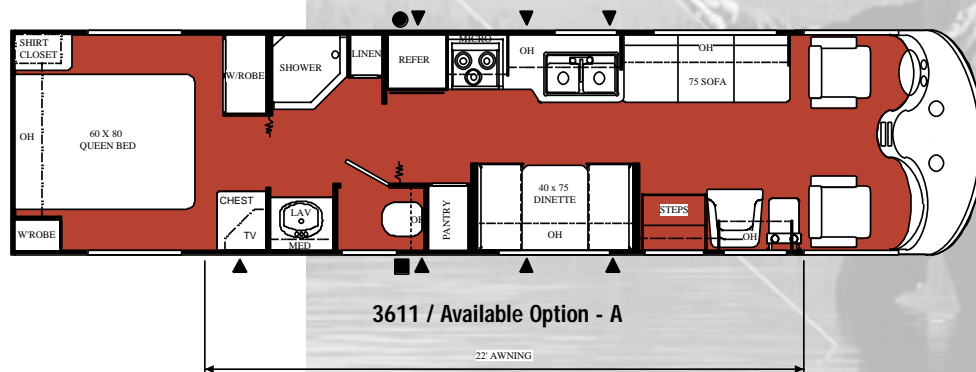
Ultrasport's full 228" wheelbase gives you a better, smoother ride and makes steering and towing much easier for the driver.

You can look directly behind your Ultrasport when backing up thanks to this handy monitor. It's placed conveniently so it can be viewed without losing sight of the rear view mirror.

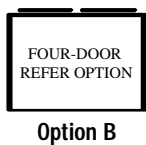
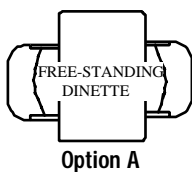
Convenient dash fans come in handy when defrosting the windshield in cold or rainy weather. It also helps circulate the air to keep passengers cool in summer, warm in winter.



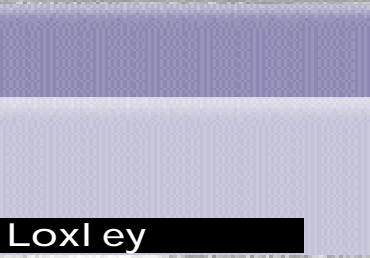
1998 FLOOR PLANS



OPTIONS



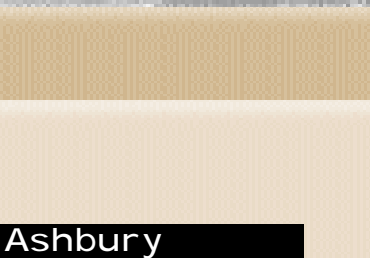
ULTRASPORT Diesel Pusher



Loxley



Buckingham



Ashbury



Green



Buff



Cream



Medium
Oak

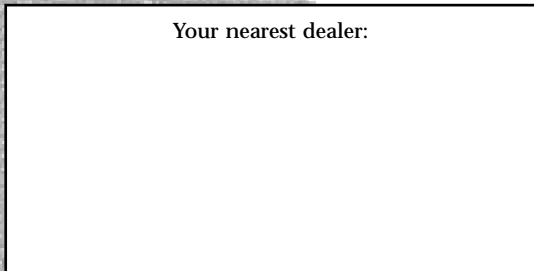


Light
Oak



Go RVing.

Your nearest dealer:



P.O. Box 1107
Elkhart, IN 46515
1-800-860-5658



Ultrasport Class A Diesel Motorhomes • 1998

Floor plans & Specifications



- Exclusive diesel offerings
- Luxury appointed
- Super Slide-Out available
- Deluxe clear-coat custom paint packages

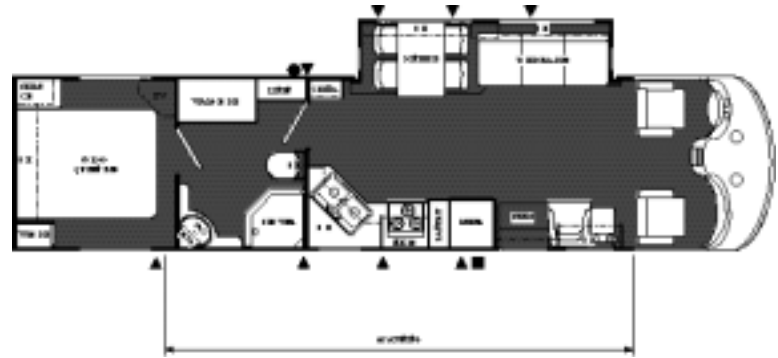
Damon

▲ = Under floor storage
● = Exterior wash down kit

Yours by Design

Model 3670

Chassis	Freightliner
Wheelbase	228"
GVWR (lbs.)	24,850
Fuel tank	90 gal.
Overall length	36'8"
Overall height w/A/C	12'
Fresh Water System (appx. gal.)	106
Grey/Black Water (appx. gal.)	53/53
Sleeping Capacity	3
LP Gas Capacity (appx.)	100 lbs./31gal.



3670



Available Option B

- Features :** Super Slide-Out room • Neo-angle shower
• China cabinet • Linen closet • Washer/dryer option available



Ultrasport
by Thor

1998 Ultrasport Class A Diesel motorhomes - Specifications

Chassis	3590	3611	3670
Forward-mount power mirrors	S	S	S
Mud flaps (4)	S	S	S
22.5" radial tires	S	S	S
Stainless steel wheel liners	S	S	S
Trailer hitch	S	S	S
Electric air horns	0	0	0
Full air brakes with auto slack adjusters front and rear	S	S	S
275HP Caterpillar engine with 800 ft-lb torque	S	S	S
Allison MO-3060 automatic transmission – 6 speed	S	S	S
Air suspension deflation system	S	S	S
In-block engine heater	S	S	S
Leece Neville 160-amp, 12-volt alternator	S	S	S
Air ride suspension	S	S	S
Bilstein shock absorbers front and rear	S	S	S
Midland Pure-Air Plus heated air dryer	S	S	S

Cockpit	3590	3611	3670
Leather insert captain's chairs – *SE	0	0	0
Reclining swivel captain's chairs	S	S	S
Power 6-way driver's seat	S	S	S
Molded dash	S	S	S
Dash fans	S	S	S
Map lights	S	S	S
Electronic cruise control	S	S	S
Floor mats	S	S	S
Full instrumentation	S	S	S
Hardwood drink tray	S	S	S
Power steering	S	S	S
Protected sun visors	S	S	S
Lined windshield privacy drape	S	S	S
Tinted wrap-around windshield	S	S	S
Douglas tilt/telescoping steering column	S	S	S
18" VIP steering wheel	S	S	S
Backup monitor system – *SE	0	0	0
Back-up monitor system ready	S	S	S

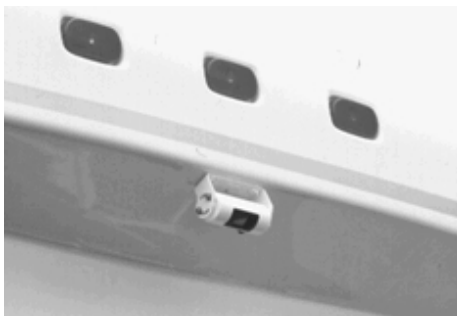
S = Standard 0 = Optional N/A = Not Available

Comfort Control Center



Exterior	3590	3611	3670
Exterior entertainment center w/pull-out table	0	0	N/A
Leveling jacks	0	0	S
Roof ladder	0	0	0
Roof vents	S	S	S
Rubber roof	S	S	S
Front fiberglass cap	S	S	S
Front fiberglass bumpers molded into cap	S	S	S
Rear fiberglass cap	S	S	S
Molded fiberglass sidewalls	S	S	S
Aerodynamic front fiberglass cap	S	S	S
Automotive style rear bumper	S	S	S
Under-hood light	S	S	S
Awning rail	S	S	S
Side-mount awning	0	0	0
Clear coat custom paint	S	S	S
Gas pistons on exterior storage doors	S	S	S
Lighted rotocast storage compartments	S	S	S
Locking exterior storage compartments	S	S	S
Radius-corner domed roof	S	S	S
White-trimmed radius top entrance door with dead bolt lock	S	S	S
2 porch lights	S	S	S
Fog lights	S	S	S
Pass-through storage	S	S	N/A
Sewer hose storage	S	S	S

S = Standard 0 = Optional N/A = Not Available



Damon
Designer Details



1998 Ultrasport Class A Diesel motorhomes - Specifications

Living Area	3590	3611	3670
Free-standing dinette	0	0	S
Video package (control center & player)	S	S	S
Living room pin-up light	S	S	S
Day/night shades throughout	S	S	S
Oak lounge table	S	S	S
Recliner barrel chair with footrest	S	S	S
Decorator glass in living room overhead cabinet	S	S	S
Kool-a-matic power vent	0	0	0
Upgrade AM/FM/CD stereo	0	0	0
AM/FM cassette stereo	S	S	S
19" color TV with full function remote in front overhead with antenna, booster and jack	S	S	S
Fluorescent lighting throughout	S	S	S
Cooler in stepwell	S	S	N/A
100% continuous-filament nylon carpeting with Scotchguard & padding	S	S	S

Kitchen	3590	3611	3670
Refrigerator – side-by-side	N/A	N/A	0
Refrigerator with icemaker	0	0	0
Refrigerator – solid oak front	S	S	S
Refrigerator – large double-door	S	S	S
Solid-surface countertops – *SE	0	0	0
Self-edged countertops throughout	S	S	S
3-burner range and oven	S	S	S
Folding range cover	S	S	S
Microwave convection	S	S	S
Double-bowl, porcelain kitchen sink	S	S	S
Two hardwood sink covers	S	S	S
Faucet/sprayer upgrade	S	S	S
Oak plank flooring	S	S	S
Lighted power range hood with monitor panel (inc. LPG readout)	S	S	S
Coffee maker/dust buster	S	S	S
Solid brass cabinet hardware	S	S	S
Hardwood cabinet doors	S	S	S
Lined overhead cabinets	S	S	S
Beveled glass backsplash	S	S	S
Mirror backsplash behind stove	S	S	S
Mini blinds in kitchen and bath	S	S	S
Padded dinette top	S	S	S
Free-standing dinette	0	0	S
Pantry	N/A	S	S
Cutlery drawer	S	S	S

*SE package includes (SE)
Back-up monitor system
Leather insert captain's chairs
Solid surface countertops – kitchen and bath

S = Standard 0 = Optional N/A = Not Available

Bathroom	3590	3611	3670
Solid-surface countertops - *SE	0	0	0
Power vent in bath	S	S	S
Porcelain toilet with sprayer	S	S	S
Shower door	S	S	S
Shower with surround	S	S	S
Bathroom skylight	S	S	S
Medicine cabinet with mirrored hardwood framed door	S	S	S
Wallpaper border	S	S	S

Bedroom	3590	3611	3670
Queen-sized bed	S	S	S
Bedspread	S	S	S
Diamond beveled mirror with designer headboard	S	S	S
Queen pillowtop mattress	S	S	S
TV cabinet and jack	S	S	S
13" color TV	0	0	0
Pin-up lights	S	S	S
AM/FM stereo	0	0	0
Day/night shades	S	S	S
Lambrequin window treatments	S	S	S
Wardrobe lights	S	S	S
Carpet-lined wardrobe with mirrored front	S	S	S
Pillow shams	S	S	S
Throw pillows	S	S	S
Swing arm pin-up lights	S	S	S

S = Standard 0 = Optional N/A = Not Available



1998 Ultrasport Class A Diesel motorhomes - Specifications

Entry	3590	3611	3670
Interior brass entry-assist handrail	0	0	0
Exterior entry-assist lighted grab handle (N/A in Canada)	S	S	S
Triple electric entrance step	S	S	S
Deadbolt door lock	S	S	S

Utilities	3590	3611	3670
50-amp, 120-volt detachable power cord	S	S	S
50-amp, 120-volt power service	S	S	S
45-amp, 12-volt power converter	S	S	S
A/C: (2) 13.5 super mach low profile	S	S	S
Dash air-conditioning	S	S	S
Generator: Onan 6.5 LP with auto changeover	S	S	S
35M BTU electronic ignition floor-ducted furnace	S	S	S
Second furnace	0	0	0
Telephone hookup	S	S	S
Water filtration system	S	S	S
City water hookup	S	S	S
12-volt demand water pump	S	S	S
Water heater by-pass	S	S	S
6-gal. gas water heater with electronic ignition	S	S	S
Enclosed and heated holding tanks	S	S	S
Emergency start circuit	S	S	S
Cable TV hookup	S	S	S
Battery disconnect	S	S	S
Dual auxiliary deep-cycle batteries	S	S	S
Carbon monoxide detector	S	S	S
LP gas detector	S	S	S
Smoke detector	S	S	S
Fire extinguisher	S	S	S
Exterior GFCI receptacle	S	S	S
Outside shower	S	S	S
Washer/dryer prep	N/A	N/A	0
Washer/dryer	N/A	N/A	0

S = Standard 0 = Optional N/A = Not Available

*SE Package — See page 6 for more details.

Your nearest dealer:



Go RVing.

P.O. Box 1107
Elkhart, IN 46515
1-800-860-5655

