



DayBreak

DayBreak Class A • By Damon Corporation





DayBreak. A New Era In Class A Comfort

Beckoning beyond the horizon of other RV motorhomes in its class, DayBreak represents exceptional value at a surprisingly affordable price. Equipped with quality furniture and a generous 13.5 BTU air-conditioner, DayBreak sets a new standard in comfort, convenience and quality.

Starting with Damon Corporation's innovative sidewalls – a highly durable board with vacuum-bonding lamination – DayBreak's amenities include hardwood-framed cabinet doors, rich designer fabrics, and plush swivel and reclining captain's chairs.

In the galley, simple meals or gourmet feasts are a breeze with the microwave oven; three-burner, high-output range; flush-mounted double-door refrigerator; and large double-bowl porcelain sink. Add to the recipe the coach's booth dinette, which features four seat belts, and you'll be guaranteed rave reviews.

But that's only the beginning of the adventurous journey that awaits you. The intimacy and elegance of the master bedroom radiates with a queen-size bed (NA on 2500) complete with stylish, color-coordinated bedspread and headboard. And, a full-height wardrobe is standard with most floor plans.

You'll also appreciate the wakeup call of either a spacious tub with full surround or a large neo-angle shower, plus the medicine cabinet and hardwood-framed mirror in the bath.

Built on the finest chassis, the DayBreak comes in a choice of six appealing floor plans, ranging in

length from 25 feet to 34 feet. Each motorhome is designed to stand the test of time, so you can travel with peace of mind, knowing your investment is backed by Damon's solid reputation for maximum dependability and minimum maintenance.

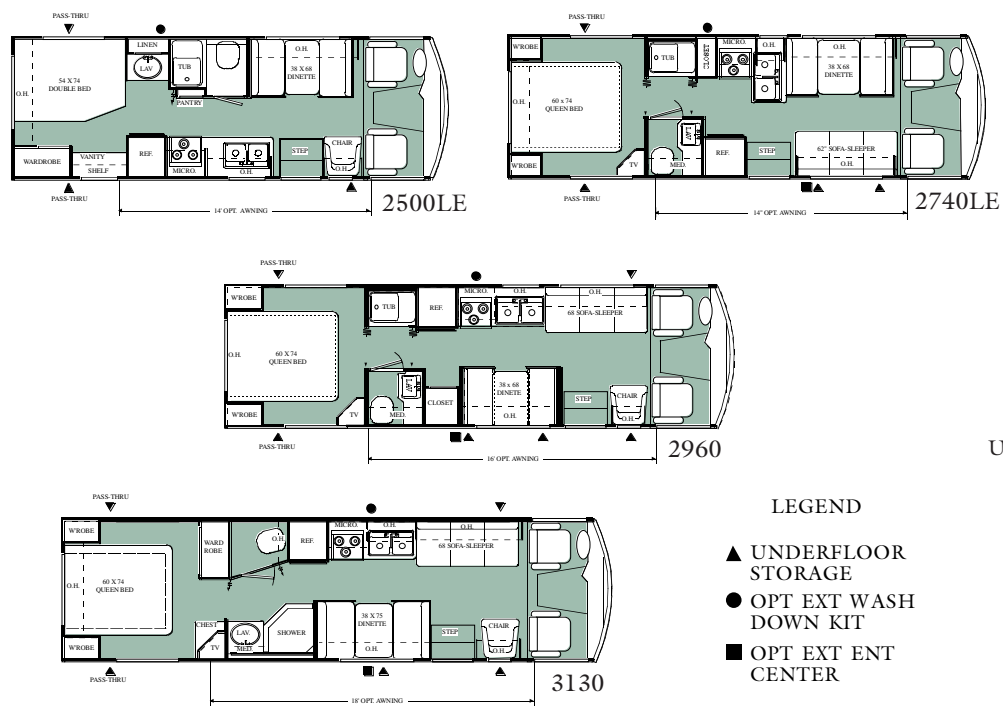
As a bonus, both the furnace and water heater are located below the floor in most floor plans, thus eliminating noise from the coach and freeing up valuable interior storage space. There's also a high-efficiency, floor-ducted heat system.

Homey in the inside and sleek on the outside, DayBreak is your ticket to ultimate adventure. A full-front radius cap and integrated fiberglass bumper enhance a stunningly handsome vehicle.

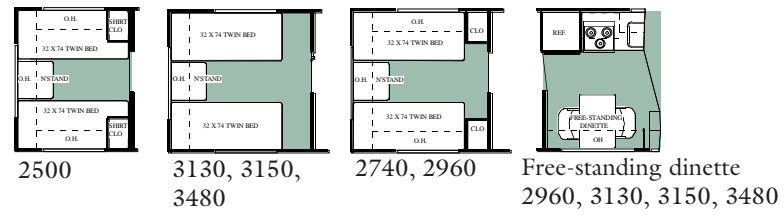
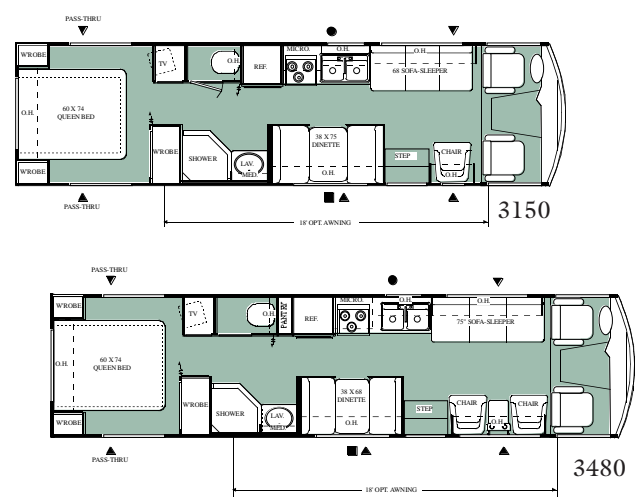
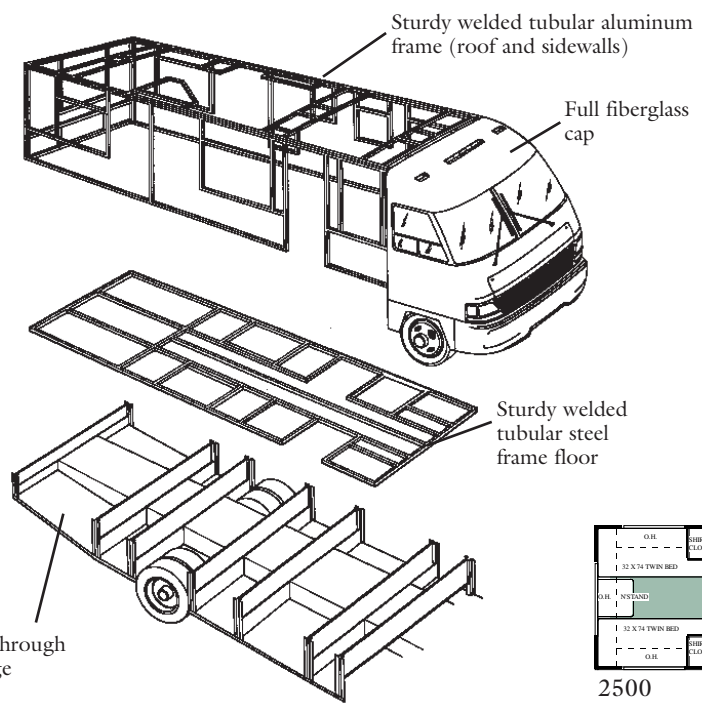
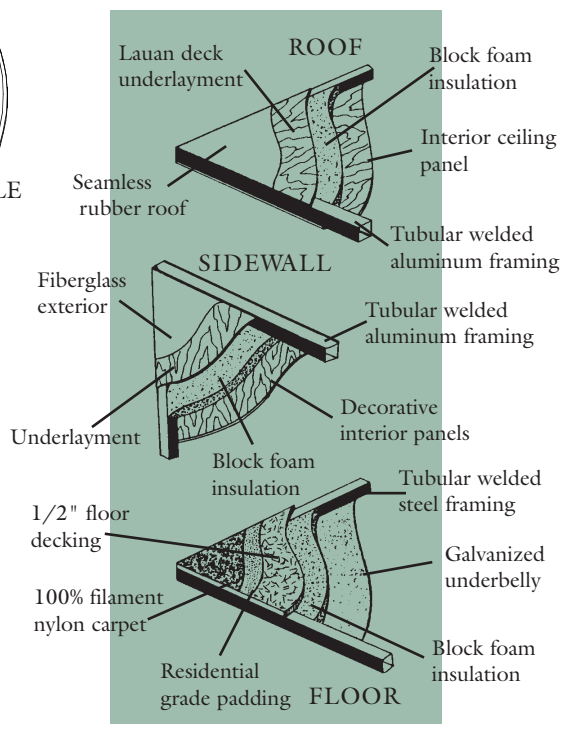
Discover what others have only dreamed. DayBreak: affordable, luxurious, and easy to drive and maintain. Yes, a new day has indeed dawned.



Cover photo shown with optional drivers door and power mirrors. (Above) DayBreak Model 3130. Meals are easy to fix and fun to eat in our super-efficient kitchen and comfortable table. Overhead storage space holds plenty of provisions. (Below) The fashionable decor, Keylime, featured in this interior includes coordinating padding, upholstery and valances, plus rich, warm cabinets.



- LEGEND**
- ▲ UNDERFLOOR STORAGE
 - OPT EXT WASH DOWN KIT
 - OPT EXT ENT CENTER



W e i g h t s a n d D i m e n s i o n s

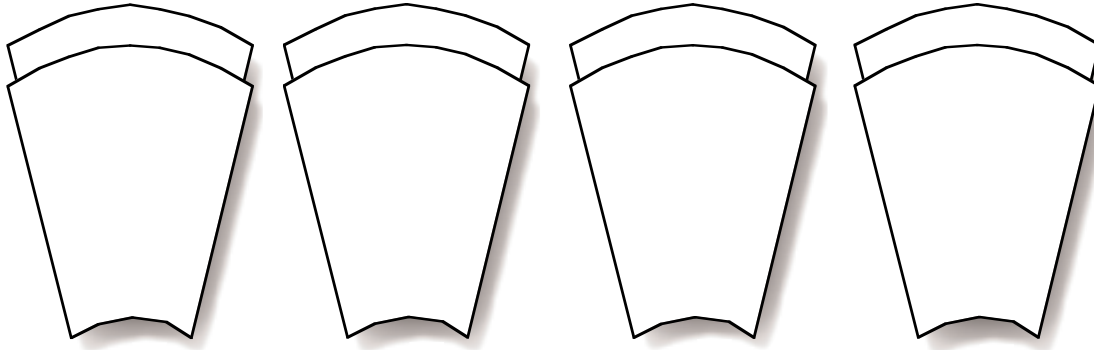
Model	2500	2740	2960	3130	3150	3480
Chassis	Chevy	Chevy	Chevy/Ford	Chevy/Ford	Chevy/Ford	Chevy/Ford
Wheelbase (inches)	158.5"	158.5"	178"/178"	216.5"/216.5"	216.5"/216.5"	234.5"/234.5"
Engine Liter (CID)	7.4 (454)	7.4 (454)	7.4 (454)/7.5 (460)	7.4 (454)/7.5 (460)	7.4 (454)/7.5 (460)	7.4 (454)/7.5 (460)
GVWR	12300	12300	14800/15200	14800/15200	14800/15200	16500/17000
Fuel Capacity	60	60	80/75	80/75	80/75	80/75
Overall Length	26'3"	28'5"	31'5"	33'10"	33'10"	35'4"
Overall Width	8'0"	8'0"	8'0"	8'0"	8'0"	8'0"
Overall Height w/roof A/C	11'3"	11'3"	11'3"	11'3"	11'3"	11'3"
Fresh Water System (approx. gal.)	63	38	63	63	63	63
Grey/Black Water (approx. gal.)	42/42	42/42	42/42	42/42	42/42	42/42
Sleeping Capacity	3	3	4	4	4	4

Cristal

Sandstorm

Keylime

Thistle



Standard Features

Chassis and Driver: Aerodynamic front fiberglass cap • Tinted wrap-around windshield • Front fiberglass bumper molded into cap • Automotive-style rear bumper • Exterior full-view mirrors • 4-Speed auto transmission w/overdrive • Power steering • Cruise control • Tilt steering wheel • Reclining swivel captain's chairs • Molded dash • Dash air conditioning • Full instrumentation • AM/FM cassette stereo • Hardwood drink tray • Map lights • Sun visors • Emergency start circuit • Underhood light • Radial tires • Stainless steel wheel covers • Front mud flaps • Trailer hitch

Exterior Features: Colonial white exterior w/deluxe graphics • Black-trimmed, entrance door • Deadbolt door lock • Integrated entrance step • Exterior entry-assist grab handle • Radius corner slider windows (jalousie in bedroom) • Rubber roof • Radius corner domed roof • Roof vents • Roof ladder • Lined & lighted storage compartments • Pass-through storage • Locking exterior storage doors • Sewer hose storage • City water hook-up • Side-mount awning • Awning rail

Electrical Systems: 13" color TV w/full function remote in front O.H. w/antenna, booster & jack • Cable TV hook up • Porch light • Power vent in bath • Exterior GFCI receptacle • Auxiliary deep-cycle battery • Battery disconnect • 45-amp, 12-volt power converter • 30-amp, 120-volt power assembly (non-detachable)

Appliances and Plumbing: 13,500 BTU central air conditioning • Electronic ignition, floor-ducted furnace (31M BTU - 2500, 2740, 2960, 3130 & 3150; 35M BTU - 3480) • Microwave oven w/turn table • 3-burner range and oven • Folding range cover • Lighted power range hood w/monitor panel (including LPG readout) • Flush-mount double-door refrigerator • Double-bowl porcelain kitchen sink • Sink cover • Power bath vent • Hand-flush toilet • Tub/shower/w/surround • Shower curtain • 6-gallon gas water heater w/electric ignition • 12-volt demand water pump • Enclosed & heated holding tanks with pads

Interior Features: Barrel chair(s) • Padded dinette ends • 100% continuous filament nylon carpeting w/Scotchgard treatment & residential padding • Hardwood-framed cabinet doors • Decorator glass in living room overhead cabinet • Windshield privacy drape • Roller shades throughout w/drapes & tiebacks • Mini blind in kitchen • Self-edged countertops throughout • Medicine cabinet w/hardwood-framed door • Hardwood-framed mirror in bath • Queen-size bed • Bedspread & headboard • TV cabinet & jack (bedroom) • Carbon monoxide detector • Smoke detector • Fire extinguisher • Cutlery drawer

(Above) Shower, shave and dress in luxurious surroundings, including your choice of tub or shower. (Below) Sweet dreams are a given with the master bedroom's queen-size bed, coordinating bedspread and valances, and plenty of cabinet storage space.



Popular Options

Driver's door w/slider window • Exterior power mirrors • Dash fans • Floor mats • AM/FM/CD stereo with seek/scan & station presets • Electric air horns • 2nd auxiliary deep-cycle battery • Generator w/auto change-over • 50-amp electric service (non-detachable) • Leveling jacks • Stainless steel wheel liners • Microwave oven w/convection • Large flush-mount double-door refrigerator also available w/icemaker • Solid hardwood raised-panel refrigerator front • Water heater by-pass kit • Twin beds (where available) • Interior entry-assist hand rail • LP gas detector • Skylight in

shower • Oak plank flooring in kitchen • Telephone jack hookup • Exterior entertainment center with pull-out table (N/A 2500) • Color TV (2nd in bedroom) • Video cassette player with remote • Clock & decorator mirror • Air conditioning: 15M BTU central IPO 13.5 • Air conditioning: 11M central (2nd in rear) • Back-up monitor system • Day/night shades in living room • Coffee maker/dust buster combination • Electric entrance step • Vent in bedroom • Fog lights • Foot-flush toilet • Free-standing dinette • Luggage rack • Pull-out swivel TV shelf & tambour door (available 3150, 3480) • Rear mud flaps • Shower door (Std. in 3130, 3150, 3480) • Spare tire, wheel & bracket • Twin bedspreads and headboards • Upgrade gel-coat wall • Upgrade innerspring mattress • Video control center • See your dealer for additional options.



Your nearest dealer:



P.O. Box 1107 • Elkhart, IN 46515 (219) 262-2624

Due to constant product improvements, the equipment, specifications, component parts and standard/optional equipment are subject to change without notice or obligation. Product photography or diagrams may show equipment that is optional. Damon Corporation reserves the right to make changes in prices, and models, and to discontinue models without notice or obligation. Components, parts, or chassis may have been manufactured at times other than the model year indicated. All capacities are approximate and dimensions are nominal. See your Damon dealer for full details. DC 6/95. © Damon Corporation - 1995 Printed in the USA.