

# WORK *and* PLAY

BY FOREST RIVER

## HEAVY DUTY INNOVATIVE FRP MODELS

FIBERGLASS REINFORCED PLYWOOD





TRAVEL TRAILER  
**18EC**

The EC model has a double size murphy bed, which when folded up becomes a seating area. This unit comes with a flip up dinette, a 32" X 34" shower with plenty of cargo space.

SHOWN WITH ONYX WOOD



TRAVEL TRAILER

# FBW

The FBW has an L-shaped kitchen and the bathroom stretches out across the front of the trailer with a wardrobe and a 32" x 34" shower. This model is available in 20ft., 22ft., 24ft., 26ft., 28ft. and 30ft.

MODEL SHOWN WITH CHERRY WOOD AND CHICAGO RUBY INTERIOR



TRAVEL TRAILER

# WLA

The WLA private bedroom features a queen size walk around bed with under bed storage. It also has a full pass-through storage compartment with exterior access from either side. This model has a 35" x 35" radius shower.

MODEL SHOWN WITH ONYX WOOD AND CHICAGO RUBY INTERIOR



TRAVEL TRAILER

WR

The WR has a private bedroom with a queen size bed and large wardrobes on each side. The bathroom includes a 35" x 35" radius shower.

MODEL SHOWN IN CHERRY WOOD AND CHICAGO RUBY INTERIOR



TRAVEL TRAILER

# FLA

The FLA has a private bedroom with a queen size bed, 2 large closets with overhead cabinets. This model has a 35" x 35" radius shower.

MODEL SHOWN WITH CHERRY WOOD AND RENDEZVOUS GREY INTERIOR



TRAVEL TRAILER  
**WRS**

The WRS private bedroom has a queen size walk around bed with under bed storage. This model has a full pass-through storage compartment with exterior access from either side. The living quarters feature a door side slide-out that contains a 68" couch, as well as a sliding glass door that keeps your toys out of your living room.



FIFTH WHEEL

# RLS

The RLS features a 76" couch in the side slide-out, a queen size mattress in the upper deck, 2 wardrobes, a large mirrored headboard with shelving and reading lights.



MODEL SHOWN WITH CHERRY WOOD AND CHICAGO RUBY INTERIOR



WELCOME TO THE NEW FRP SERIES

# REDESIGNED

FOR THE GREATEST BLEND OF PRACTICALITY

# WORK AND PLAY



We rolled up our sleeves and examined every feature and asked ourselves, "How can we make this better?" At the end of the day, we stand behind an improved product line which reflects the current trends and needs of our buyers. You've spoke and we've responded.

## INTERIOR

- 6 cubic foot refrigerator
- Convection microwave oven
- 6 gallon DSI water heater
- 6 D rings
- Porcelain toilet
- Gas/water resistant floor spray
- 3 burner cooktop
- Choice of 3 interiors
- Choice of 2 woods
- 84" interior height
- Easy glide locking drawer guides
- Night shades in bedroom
- Tinted windows
- Lumber core stiles
- Cabinets are screwed not stapled

## EXTERIOR

- Roof air conditioner
- Awning
- Aluminum wheels
- Corner crank down stabilizer jacks
- TV antenna
- Satellite/ cable hookup
- Twin 30 lb. propane tanks (18EC has twin 20 lb. propane tanks)
- Double step
- Nitro-filled tires
- Hitch light
- Smooth side gel coat FRP (Fiberglass Reinforced Plywood) sidewalls
- One-piece aluminum roof
- Ramp door - Rated up to 5000 lbs.
- Rear load light
- One-piece fiberglass front cap
- Ritrand air release vinyl graphics

## OPTIONS

- Value package which includes generator rack, 1 pair outside speakers, rear pull down screen, outside shower, and AM/FM/CD/DVD stereo
- 32" flat screen TV
- 4k Onan generator travel trailer/ 5.5k Onan generator for fifth wheels
- Fuel station
- Escape door in the cargo area
- Beavertail frame
- Bedspread and pillow shams
- Spare tire
- Extra entrance door with single step
- Power awning
- Electric tongue jack
- 4 ft. fluorescent light
- Bogey wheels
- Choice of furniture



GEO SAPPHIRE INTERIOR



CHICAGO RUBY INTERIOR



RENDEZVOUS GREY INTERIOR



NO-DRIP EDGE

WORK AND PLAY

# SPECIFICATIONS

Model #	FW/TT	Cargo Length	Carry Capacity	Base Weight (lbs.)	Hitch Weight (lbs.)	Axle Weight (lbs.)	No. AX	GVWR (lbs.)	Box Length	Total Length	Water Cap	Black Gray	Hitch Size
WPT18EC	TT	16'	4452	5205	895	4310	2	9695	19'7"	24'2"	110 gal	38/26	2 5/16"
WPT20FBW	TT	10'7"RS/ 12'6"CS	6873	6196	1128	5068	2	13128	22'2"	24'8"	110 gal	38/38	2 5/16"
WPT22FBW	TT	12'7"RS/ 14'6"CS	6964	6083	1106	4977	2	13106	24'2"	26'8"	110 gal	38/38	2 5/16"
WPT24FBW	TT	14'7"RS/ 16'6"CS	6183	6854	1096	5758	2	13096	26'2"	28'8"	110 gal	38/38	2 5/16"
WPT26FBW	TT	16'7"RS/ 18'6"CS	6445	6601	1105	5496	2	13105	26'2"	30'8"	110 gal	38/38	2 5/16"
WPT28FBW	TT	19'7"RS/ 21' 6"CS	5398	7598	1055	6543	2	13055	30'8"	34'8"	110 gal	38/38	2 5/16"
WPT30FBW	TT	21'7"RS/ 23'6"CS	5439	7804	1302	6502	2	13302	33'2"	36'	110 gal	38/38	2 5/16"
WPT26FLA	TT	8'10"RS/ 10'4"CS	5481	7585	1125	6460	2	13125	26'-2"	30'-8"	110 Gal	38/38	2 5/16"
WPT28FLA	TT	11'10"RS/ 13'4"CS	5351	7750	1160	6590	2	13160	31'9"	34'8"	110 Gal	38/38	2 5/16"
WPT30FLA	TT	13'10"RS/ 15'4"CS	5715	7594	1368	6226	2	13368	33'2"	36'	110 Gal	38/38	2 5/16"
WPT30WA	TT	10'RS/18'4CS	4439	8626	1124	7502	2	13124	33'2"	36'	110 Gal	38/38	2 5/16"
WPT30WLA	TT	11'RS/ 13'9"CS	4462	8587	1108	7479	2	13108	33'2"	36'	110 Gal	38/38	2 5/16"
WPT30WR	TT	10'5"	4982	8019	1060	6959	2	13060	33'2"	36'	110 Gal	38/38	2 5/16"
WPT30WRS	TT	10'	4455	8552	1066	7486	2	13066	33'2"	36'	110 Gal	38/38	2 5/16"
WPF34FK	FW/GN	13'7"	7351	9160	2570	6590	2	16570	34'-8"	35'-8"	110 Gal	38/38	NA
WPF38FK	FW/GN	17'7"	5463	11406	2928	8478	2	16928	38'-8"	39'-8"	110 Gal	38/38	NA
WPF40FK	FW/GN	19'-7"	6961	13740	2760	10980	3	20760	42'8"	42'8"	110 Gal	38/38	NA
WPF44FK	FW/GN	23'-7"	7296	13645	3149	10496	3	21000	46'6"	46'6"	110 Gal	38/38	NA
WPF34RLS	FW/GN	10'	6173	10551	2783	7768	2	16783	34'-8"	35'-8"	110 Gal	38/38	NA
WPF38RLS	FW/GN	14'	5497	11098	2654	8444	2	16654	38'-8"	39'-8"	110 Gal	38/38	NA
WPF40RLS	FW/GN	16'	8195	12354	2608	9746	3	20608	42'8"	42'8"	110 Gal	38/38	NA
WPF44RLS	FW/GN	20'	7919	12862	2840	10022	3	20840	46'6"	46'6"	110 Gal	38/38	NA

ALL WEIGHTS AND LENGTHS ARE APPROXIMATE DEPENDING ON HOW UNIT IS EQUIPPED.

TRAVEL TRAILERS FROM GROUND TO TOP OF A/C ARE 10' 10" | FIFTH WHEELS FROM GROUND TO TOP OF A/C ARE 11' 6"

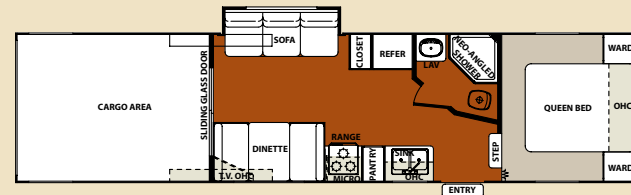
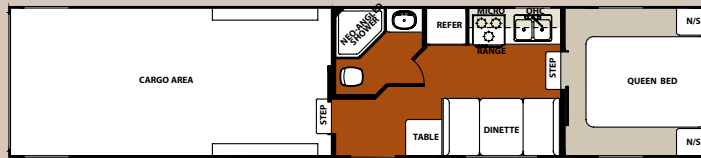
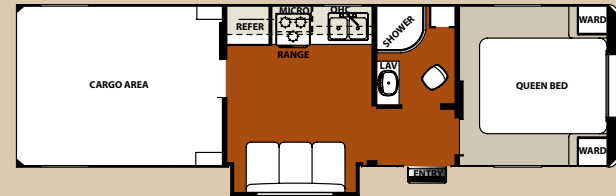
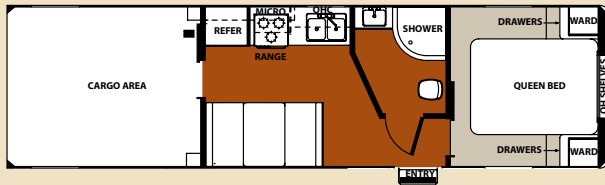
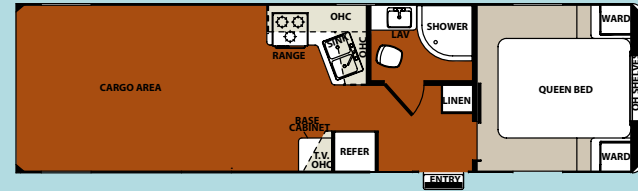
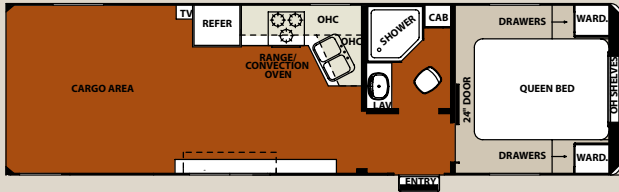
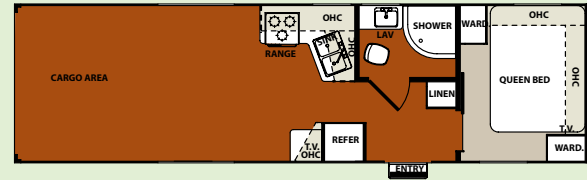
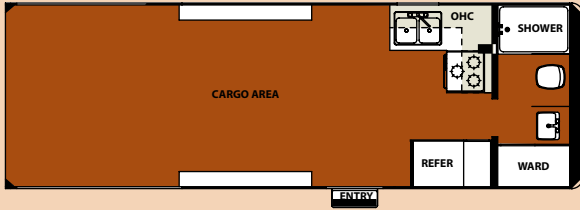
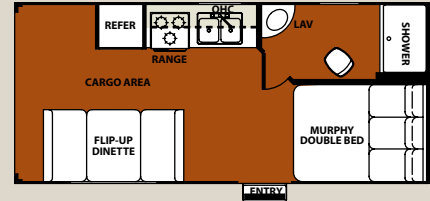
**BASE WEIGHT** | The weight of the unit with no fluids, cargo, optional equipment or accessories.

**CARRY CAPACITY** | The amount of weight available for all fluids, cargo, optional equipment or accessories.

**GVWR (Gross Vehicle Weight Rating)** | The maximum permissible weight of the unit including the Base Weight plus all fluids, occupants, cargo, optional equipment and accessories. For safety and product performance, do not exceed the GVWR.

WORK AND PLAY

# FLOORPLANS



# WORK and PLAY

## HEAVY DUTY INNOVATIVE FRP MODELS



Forest River, Inc. encourages our customers to purchase their Forest River products from a local dealership whenever possible for the following reasons:

- 1) Forest River, Inc. dealers are independently owned and operated businesses so priority service and scheduling is at their discretion and is often provided to customers that purchased their unit at that dealership.
- 2) Purchasing locally allows customers to establish meaningful relationships with a dealer, enhancing the RV experience through assistance with product questions, user tips or RV regulations for your state or country, and much more!
- 3) Canadian customers must meet requirements to bring an RV purchased out of the country to their home. These requirements may involve additional inspections and certifications, taxes and fees. Your local Canadian Dealer is a professional at meeting these requirements.
- 4) Scheduling timely warranty repairs and adjustments through a local dealership provides far greater flexibility and convenience to you, the customer!

It is the goal of Forest River, Inc. that all of our RV owners fully enjoy the RV experience and that customer satisfaction meets or exceeds their expectations!

### 24/7 EMERGENCY ROADSIDE ASSISTANCE

For a worry-free ownership experience Forest River includes one

## Coach-Net®

RV Technical & Roadside Assistance

year of Coach-Net RV Technical & Roadside Assistance with each RV purchase. Whether new to the RV lifestyle or an experienced RV enthusiast, Forest River owners have 24/7 access to technical, operational and emergency road service coverage throughout the US & Canada. Coach-Net's fast, dependable service is just a phone call away.



#### PRE-DELIVERY INSPECTION FACILITY

20,000 square feet of quality assurance. The bare essentials for a premium product. This state-of-the-art facility gives immediate daily feedback to production for quality assurance in every unit built.



**Learn More**  
Scan this barcode using a QR Reader on your smart phone to learn more about Forest River.



A Berkshire Hathaway company.

3010 College Avenue, Goshen, IN 46528 [www.forestriverinc.com](http://www.forestriverinc.com) 574.533.5934

© Copyright 2011 Work and Play, a division of Forest River Inc. All rights reserved.

To learn more about Work and Play and our products and see how Work and Play is making the easy life easier, visit [www.forestriverinc.com/workandplay](http://www.forestriverinc.com/workandplay)

YOUR WORK & PLAY DEALER

All illustrations and specifications contained in this literature are based on the latest product information at time of publication. Forest River reserves the right to make changes in prices, colors, materials, equipment and specifications at anytime without notice and assumes no responsibility for any error in this literature. All units are shipped F.O.B. Goshen, Indiana. CONSULT YOUR LOCAL DEALER FOR WARRANTY INFORMATION. LITHO: U.S.A. FOR 0918