

WOLF PACK

BY FOREST RIVER

WOLF PACK

BY FOREST RIVER



19WP in Earth Tan

All Wolf Packs are Wide Body 102" for a spacious interior and extra room for all the TOYS you may want to bring along. Notice the Rear King Dinette and contemporary lounge sofas. They are also equipped with a front bed to accommodate a variety of sleeping arrangements.

The 19WP also offers a front bath so you can optimize on cargo space. The bathroom offers ample storage space.



As you can see above the Wolf Pack comes with more than the usual standard features to ensure a great time. And the trailers are all half-ton towable.

Our spacious and clean looking interiors allow for a variety of entertainment options after you arrive at your destination.



Notice how we've utilized the space throughout to maximize travel storage as well as daily storage with our oversized cabinetry.



Whether you're hauling motorcycles, ATV's, golf carts or Rhinos we have you covered in our 1/2 ton series Wolf Packs.



305WP in Earth Tan

Wolf Pack Fifth Wheels are the ultimate toy haulers at a great price point loaded with TONS of industry firsts. Observe the HUGE sitting space displayed.

Coming home to this spacious floorplan after a long fun day on your favorite toy will be relaxing and accommodating for the entire family. When it's movie time there's plenty of lounging space for everyone to relax and enjoy the show.



The Wolf Pack Fifth Wheels all feature a rear cargo room or garage that can be converted to an outdoor dining room or a second bedroom.



WOLF PACK FEATURES



Notice the walk around bed, storage, and lighting that are the character of all our 5th wheels no matter which floorplan you like best.



A



D



B

- A. **Pull-Out Faucet**
- B. **Metal Drawer Guides**
- C. **Water Filter (Optional)**
- D. **Screen Wall / Tent Wall (Optional)**

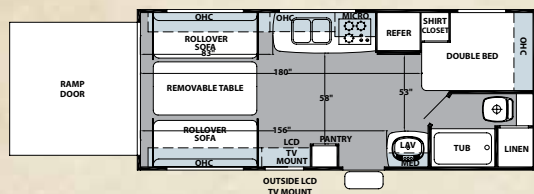


C

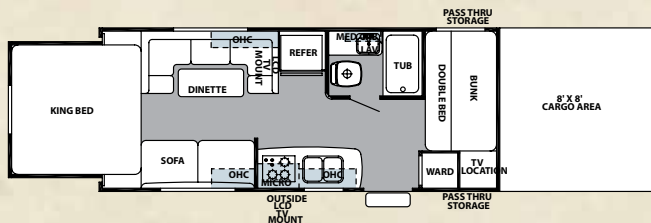


WOLF PACK TRAVEL TRAILER FLOORPLANS

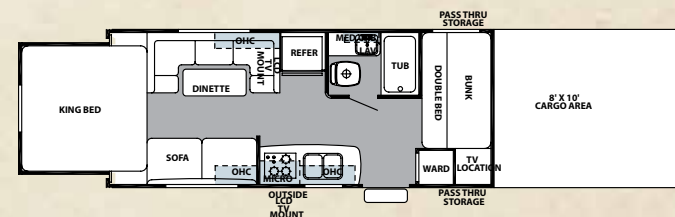
19WP



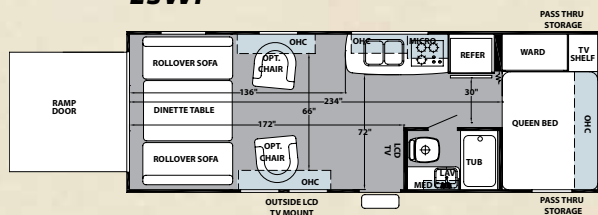
21WP



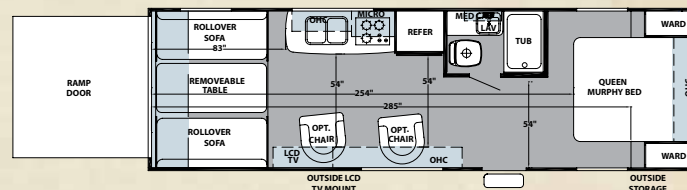
21WP120



23WP



27WP



TRAVEL TRAILERS

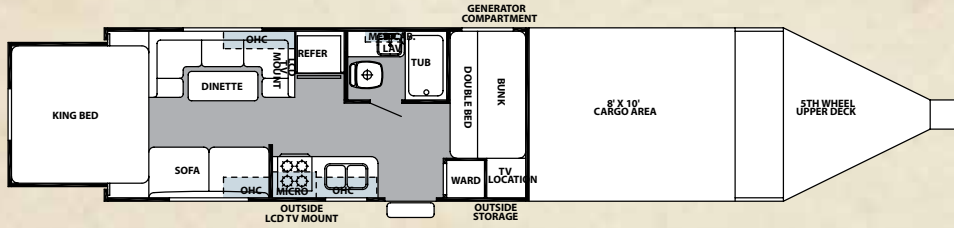
	T19WP	T21WP	T21WP120	T23WP	T27WP
Dry Hitch Weight	668 lbs.	604 lbs	586-lbs	865-lbs	930 lbs
Unloaded Vehicle Weight	5262 lbs.	5993 lbs	6279-lbs	5616-lbs	5639 lbs
Cargo Carrying Capacity	2368 lbs	1611 lbs	1269-lbs	2215-lbs	2253 lbs
Exterior Length	24'-11"	33'5"	35'-9"	28'-9"	31'
Exterior Height w/ AC	11'-1"	10'9"	11'-1"	11'-1"	11'-7"
Exterior Width	102"	102"	102"	102"	102"
Bedroom Interior Height	78"	NA	78"	78"	76"
Grey Capacity	41gal	41gal	41gal	41gal	41gal
Black Capacity	31gal	41gal	41gal	41gal	31gal
Fresh Capacity	50gal	50gal	50gal	100gal	104gal
Cargo Area Size-Off DS	84"	NA	120"	140"	84"
Cargo Area Size-DS	170"	NA	120"	174"	269"
Storage Height	84"	NA	NA	84"	93"

FIFTH WHEELS

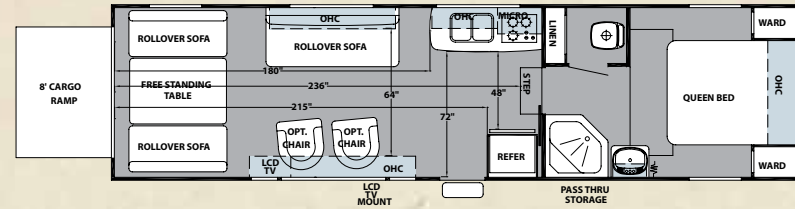
	F215WP	F295WP	F305WP
Dry Hitch Weight	825 lbs	1462 lbs	1802lbs
Unloaded Vehicle Weight	7598 lbs	7838 lbs	8694lbs
Cargo Carrying Capacity	3347 lbs	3747 lbs	3049lbs
Exterior Length	39'-8"	33'-2"	35'
Exterior Height w/ AC	10'-10"	11'-10"	13'4"
Exterior Width	102"	102"	102"
Bedroom Interior Height	N/A	72"	76"
Grey Capacity	41gal	41 Gal.	41 Gal.
Black Capacity	41gal	41 Gal.	41 Gal.
Fresh Capacity	50gal	104gal	104gal
Cargo Area Size-Off DS	99"	180"	131"
Cargo Area Size-DS	99"	214"	131"
Rear Storage Height	Unlimited	92"	102"

WOLF PACK FIFTH WHEEL FLOORPLANS

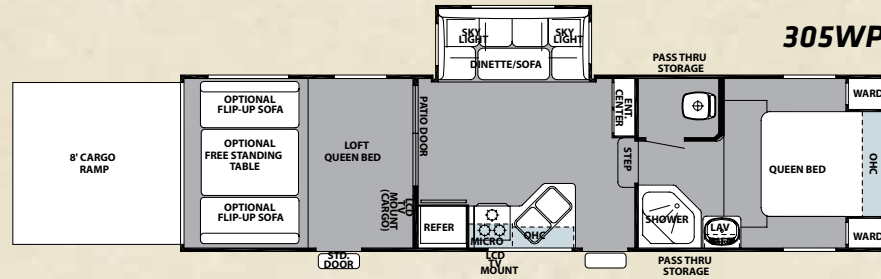
215WP



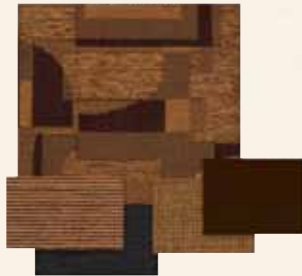
295WP



305WP



WOLF PACK INTERIOR DECOR



Earth Tan



Golden Espresso



Leaf Sand



Ryker Brown

WOLF PACK STANDARDS + OPTIONS

STANDARD EQUIPMENT

TT	
S	Stereo w/DVD/CD/MP3 Hook up
S	Outside Tv Bracket with Video/ Antenna Hook-up
S	2-Exterior Speakers
S	Satellite/Cable Hook-up
S	Black Tank Flush
S	Power Vent in Bath
S	6 Gal. Gas Water Heater
S	110 gallon fresh water (most models)
S	13.5K A/C
S	Microwave
S	Double Door Refrigerator
S	Porch Light
S	Outside GFI Outlet
S	Double Steps / Triple Step (5th Wheel)
S	15" Tires
S	15" Aluminum Rims
S	3/8" walkable roof decking
S	5/8" tongue and groove plywood floor decking
S	Radius truss roof rafters
S	Powder coated frame
S	Extra Large Safety Glass Windows
S	Exterior Sewer Hose Holder Under Mount
S	TV/Radio Antenna
S	Water Heater Bypass
S	LP Leak Detector
S	Carbon Monoxide Detector
S	Coat Hooks
S	Full Extension Drawer Guides
S	Dual LP Bottles

OPTIONAL EQUIPMENT

TT	
O	Oven
O	Bathroom Fantastic Vent Fan
O	10,000 Gal. Water Filter System
O	Rear Ladders (Backers Std. On All)
O	10 Gal. DSI Water Heater
O	RVQ Prep
O	RVQ Outside Grill
O	Night Shades
O	Skylight Over Tub
O	Spare Tire
O	Heated Holding Tank Pads
O	Large Grab Handles
O	Scare Light
O	Raised Panel Refer
O	Screen Wall
O	Sink Covers (1 or 2)
O	Range Covers
O	Executive Recliner (Std. On Some Models)
O	Lazy Boy Recliner
O	Serta Mattress
O	Electric Leveling Jacks
O	12v Battery Disconnect
O	Large Double Door Refrigerator
O	Outside Shower
O	15K A/C IPO 13.5K
O	Convection Oven
O	Rear Power Bed

SOUTHWEST PACKAGE

Spare Tire and Carrier
Scare Light (Rear)
Gas Pump Fuel Station w/Generator Direct
Sky Light Over Tub
Removable Edge Carpet
Fuel Timer w/Emergency Cut Off



Forest River, Inc. encourages our customers to purchase their Forest River products from a local dealership whenever possible for the following reasons:

- 1) Forest River, Inc. dealers are independently owned and operated businesses so priority service and scheduling is at their discretion and is often provided to customers that purchased their unit at that dealership.
- 2) Purchasing locally allows customers to establish meaningful relationships with a dealer, enhancing the RV experience through assistance with product questions, user tips or RV regulations for your state or country, and much more!
- 3) Canadian customers must meet requirements to bring an RV purchased out of the country to their home. These requirements may involve additional inspections and certifications, taxes and fees. Your local Canadian Dealer is a professional at meeting these requirements.
- 4) Scheduling timely warranty repairs and adjustments through a local dealership provides far greater flexibility and convenience to you, the customer!

It is the goal of Forest River, Inc. that all of our RV owners fully enjoy the RV experience and that customer satisfaction meets or exceeds their expectations!



PRE-DELIVERY INSPECTION FACILITY

20,000 square feet of quality assurance. The bare essentials for a premium product. This state-of-the-art facility gives immediate daily feedback to production for quality assurance in every unit built.

S = STANDARD, O = OPTIONAL, - - = NOT AVAILABLE
TT= TRAVEL TRAILERS (INCLUDES 295WP AND 305)



Learn More
Scan this barcode using a QR Reader on your smart phone to learn more about Forest River.



A Berkshire Hathaway company.



YOUR WOLF PACK DEALER

Forest River, Inc. 402 Lehman Avenue Topeka, IN 46571
www.forestriverinc.com/wolfpack www.forestriveraccessories.com

All illustrations and specifications contained in this literature are based on the latest product information at time of publication. Forest River reserves the right to make changes in prices, colors, materials, equipment and specifications at anytime without notice and assumes no responsibility for any error in this literature. All units are shipped F.O.B. Goshen, Indiana.

CONSULT YOUR LOCAL DEALER FOR WARRANTY INFORMATION. LITHO: U.S.A. FOR 0916