

# Cardinal

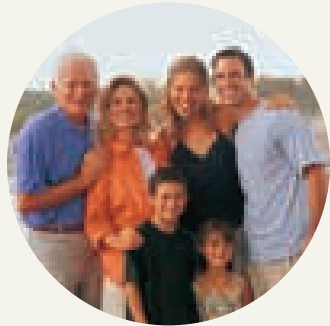
BY FOREST RIVER



LUXURY FIFTH WHEELS

CARDINAL LUXURY FIFTH WHEELS





**Versatile design  
to fit your lifestyle**

From homestyle to theater style,  
Cardinal offers a broad range of  
floorplans for full-time living.



*3850RL features a large residential size, double door pantry for a fully stocked kitchen.*



3850RL



Cardinal models have flush floor slides and come standard with a 32" bedroom TV, a king size bed, a dresser with cedar lined drawers and a cedar lined wardrobe with shoe storage. Shown in Linen decor.

*This 3850RL model features opposing slides so you can live large. The island has a solid surface countertop, with a deep stainless steel sink and high-rise pull-out faucet. An attractive mosaic tile backsplash surrounds the cooktop. LED overhead lighting brightens the living area. Solid hardwood throughout with hidden hinges on cabinet doors set a warm tone. The big 40" TV and fireplace are standard. Nutmeg decor shown with optional stainless steel appliances.*



*Pack for changing weather. Generous lighted hallway closets and wardrobes provide storage for all the little extras that make travel fun. Standard on 3550RL, 3675RT and 3850RL models. All Cardinal models include a contemporary textured glass bedroom door.*

*3550RL, 3675RT and 3850RL master bedroom models include bathroom access from the bedroom or the hallway.*





**Welcome Home**

Take all the comforts of home wherever you travel, from the infield to the great outdoors, living is easy in a Cardinal Fifth Wheel.

3800FL



*This impressive front living theater room features a huge 55" LED TV, with a surround sound system and an electric fireplace. Jump up and cheer the team! The radius ceiling allows for more interior headroom. Solid hardwood fascia frames each of the opposing slide outs. Tastefully appointed in Linen decor with bonded leather upholstery.*



*This one-piece radius fiberglass shower has a built-in seat, textured glass door and skylight. The vanity features solid surface countertop with an integrated porcelain sink.*

*This large, well lit bedroom with opposing slide outs features big windows, double wardrobes, a vanity dresser, a 32" TV, a king size bed with overhead storage, plus solid cherry hardwood, cedar lined drawers and wardrobes.*



*This kitchen package includes a 23 cu. ft. residential refrigerator with a built-in ice maker and water dispenser; free standing dinette, stove, convection microwave oven, deep stainless steel double bowl sinks and a high-rise pull-out faucet. Solid surface countertops come with sink and stove top covers. Optional stainless steel appliances are available.*





*The spacious 3675RT is shown with a large standard 40" LCD TV and electric fireplace. Gourmet cooks will love this versatile solid surface countertop kitchen island, deep stainless steel sinks and high rise pull-out faucet. The stove has an attractive mosaic tile backsplash. Shown in Nutmeg decor with standard bonded leather upholstery. Options include theater seating and a 12 cu. ft. refrigerator.*



All Cardinal kitchens feature solid cherry hardwood cabinetry, ergonomically designed to maximize convenience, while setting the stage for an enjoyable cooking experience. This solid surface countertop island has extra large dual stainless steel sink bowls, deep enough for stock pots and pans. The high rise, pull-out, satin nickel faucet makes clean up a breeze. An attractive mosaic tile backsplash accents the cooking area.



Stock the pantry for an extended stay. There's plenty of storage space for even the most creative cook. (3675RT shown)



KEY: A Sofa & Recliner, B Living Area Windows, C Dinette Cushions, D Bedroom Fabrics

# Cardinal

BY FOREST RIVER

Cardinal's bath features a 30" x 60" shower with an adjustable shower head and skylight. A double door vanity with a solid surface countertop, an integrated porcelain sink and a full medicine cabinet enhance residential appeal.



A king size premier inner spring mattress with underbed storage is standard on all models. Cardinal bedrooms include contemporary, mirrored cedar lined wardrobes and standard washer/dryer prep. (Dual electrical supply allows the washer/dryer to operate simultaneously.)



**3450RL**

This 3450RL gourmet kitchen is fit for a master chef! Rich, raised panel cherry hardwood cabinetry with a built-in wine rack provides an abundance of storage space. Optional stainless steel appliance package includes a stainless steel refrigerator front, stainless steel convection microwave and a stainless steel sealed burner range. (12 cu. ft. refrigerator shown.)

Work, rest or play. The 3450RL's living area features a standard 40" LCD TV with a built-in, pull-out desk that's cable and internet ready. Swivel recliners are shown in bonded Espresso leather. Extra deep flush floor slide rooms are framed with beautiful cherry hardwood fascia. A standard fireplace adds ambience.

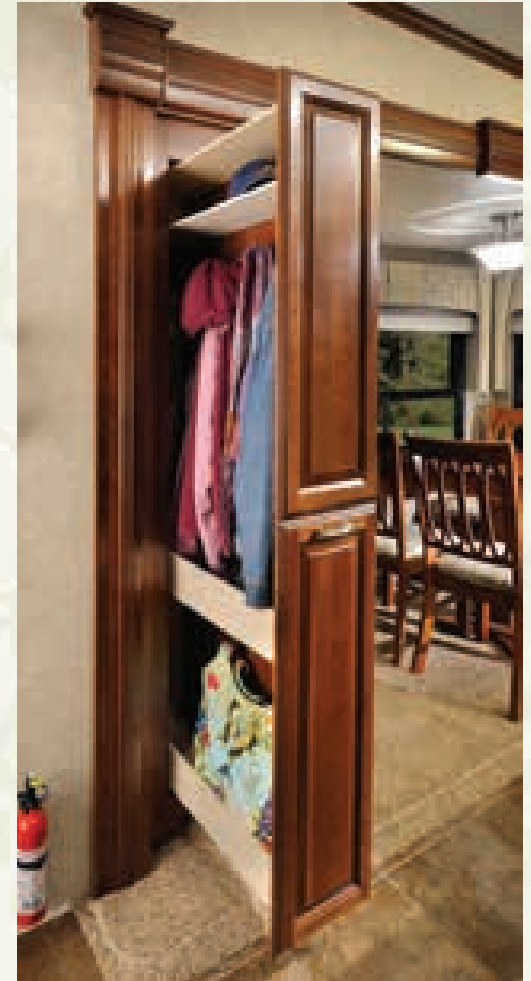






*This 3030RS comes with a standard 40" TV and fireplace, 8 cu. ft. refrigerator, a convection microwave oven and two barstools. Access the bedroom through the contemporary textured glass door.*

*Tuck away valuables or just keep items handy with cleverly concealed underseat storage.*



*The 3030RS sliding hidden coat closet maximizes storage capacity.*



**3030RS**

*This inviting island with two bar stools is a great place to entertain. Flush floor slides on both sides provide a smooth transition throughout. (3030RS shown in Linen with standard fireplace and central vacuum system with power dustpan, located under the bottom step.)*

**A lot of great thinking goes into every Cardinal Fifth Wheel**

Our engineers are continuously looking for ways to pack more luxury and convenience into every fifth wheel we build.

*Cardinal...Achieving an enhanced travel experience through ongoing innovation.*



All Cardinal models are built with a radiused roof for more interior headroom. A standard lighted living area ceiling fan circulates air throughout the coach.



40" LCDIHD flatscreen TVs are standard in living areas.  
32" LCDIHD flatscreen TVs are standard in the bedrooms.

*This innovative under table top storage feature provides handy access to games, placemats, magazines and more. Extendable dual leafs and sliding base provide extra room. (Shown in Nutmeg.)*



# Cardinal

BY FOREST RIVERS



The centrally located control panel convenience center is neatly tucked away behind a bulletin board with key hooks and a note pad caddy.



Slam-Latch baggage doors.



Contemporary mosaic tile backsplash is attractive and easy to clean.



Frameless deep tinted windows enhance clean styling. Crank windows open for ventilation and easy maintenance. (Dual pane option also available.)



Cardinal is built with durable gel coat, vacuum bonded, laminated fiberglass sidewalls, end walls and roof on all slide outs.



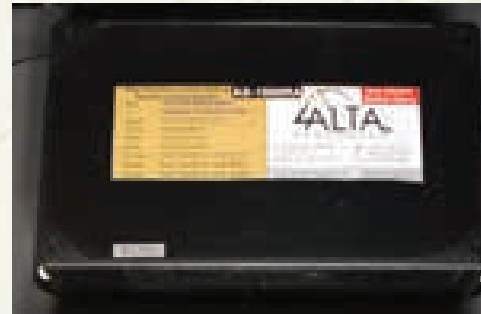
The universal docking station is the protected, lighted, one-stop location with access to utilities, all coach water filtration system, exterior shower, winterizing kit, soap dispenser and cable/satellite hook-ups.



An easy access, full size Goodyear™ spare tire is located in the spacious pass-thru storage area, not underneath like the competition.



MORryde CRE/3000 compression rubber equalizer system for smoother towing.



The ALTA system and remote key fob controls slides, front hydraulic and electric rear stabilizer jacks, the awning and patio light. A hydraulic 6-point leveling system is an available option.



Goodyear™ tires are standard on all models with 8-lug, easy lube axles and aluminum alloy wheels.

Cardinal is offered in a selection of five appealing exteriors. Choose your favorite.



STANDARD GRAPHICS



STANDARD GRAPHICS WITH CUSTOM PAINT



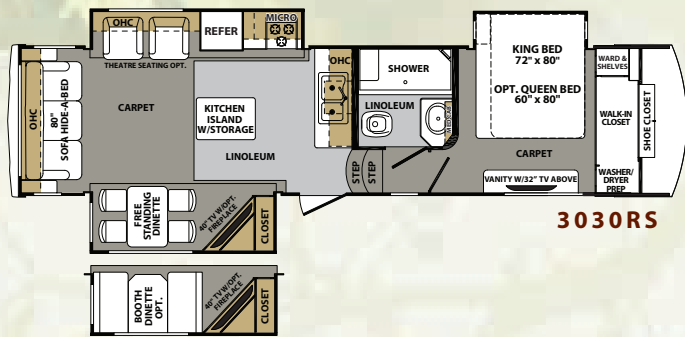
FULL BODY PAINT MERLOT



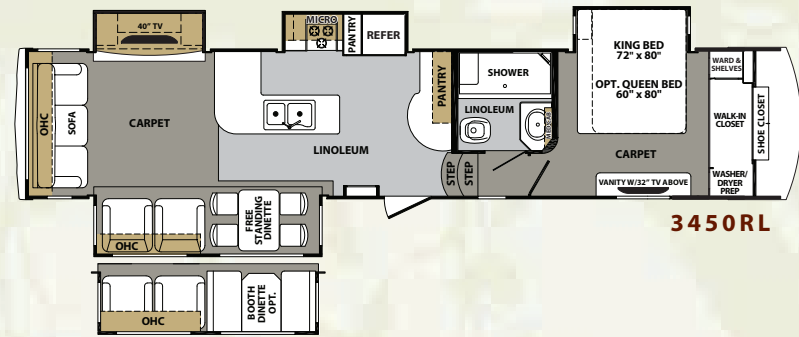
FULL BODY PAINT BURGUNDY



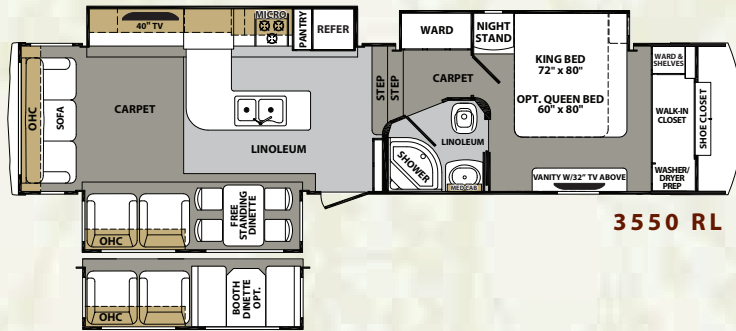
FULL BODY PAINT CREAM



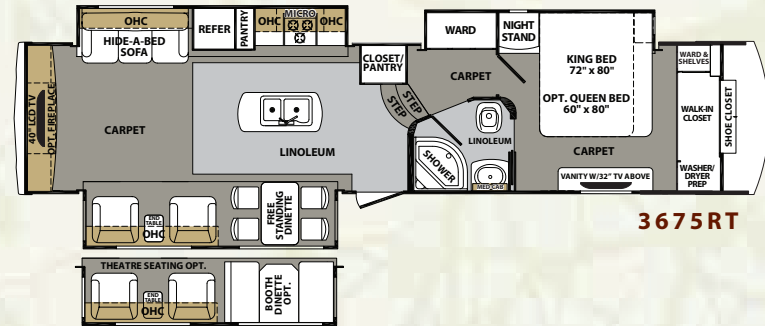
**3030RS**



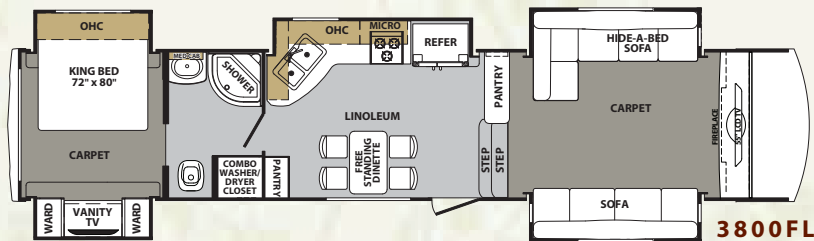
**3450RL**



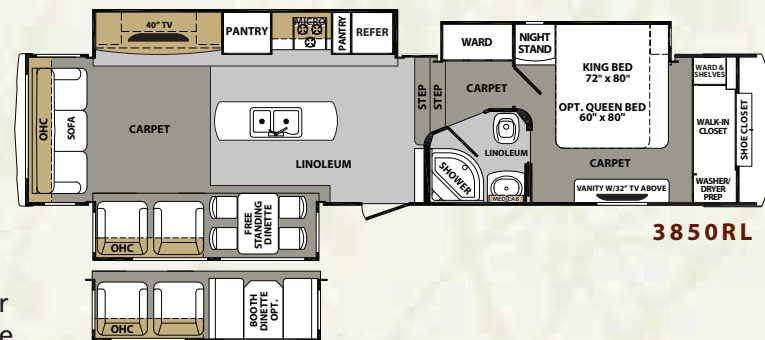
**3550 RL**



**3675 RT**



**3800 FL**

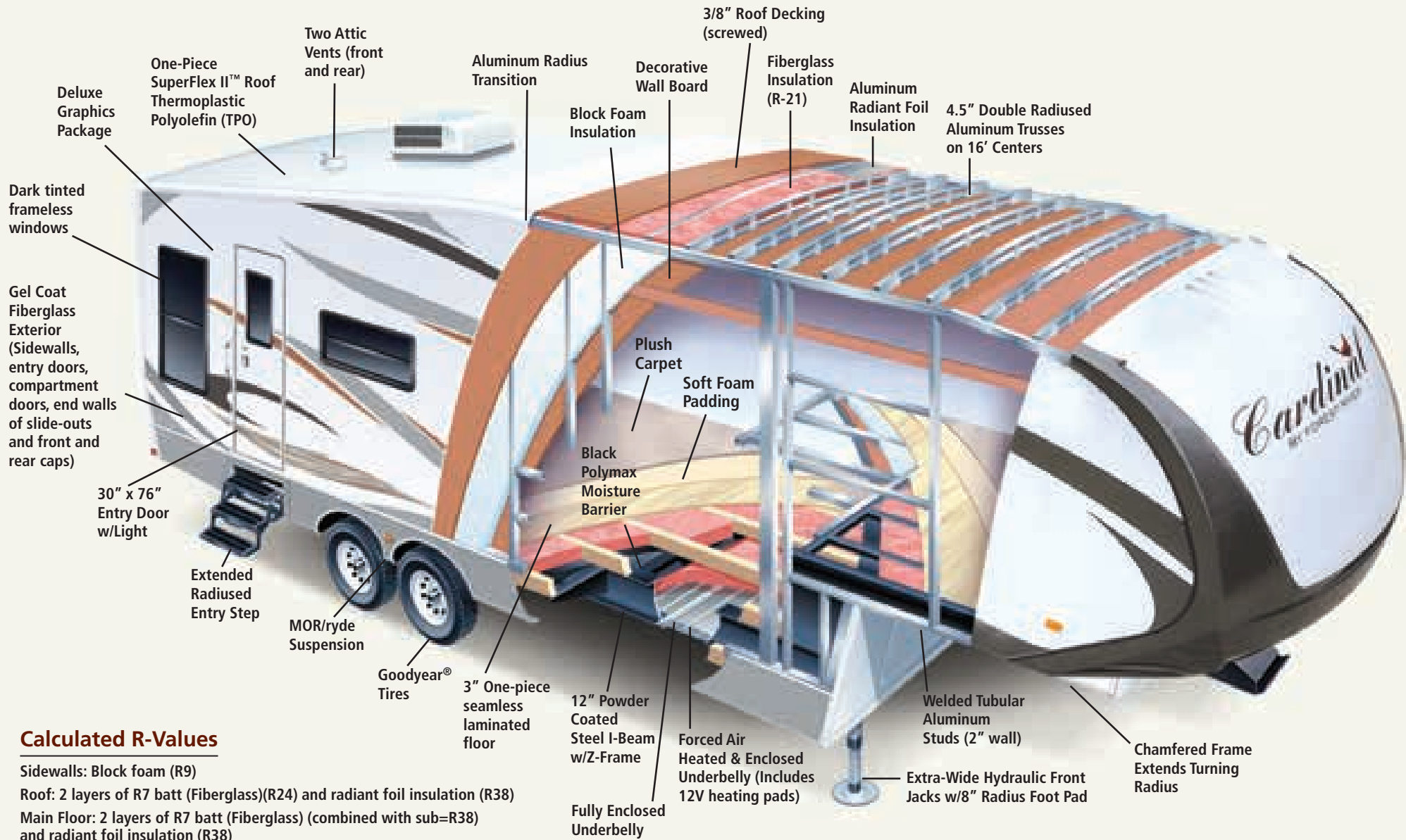


**3850 RL**

For ease of movement and safety, all Cardinal main floor slide rooms are flush floor designs. Choose from a wide selection of configurations planned to fit your lifestyle.

	3030 RS	3450 RL	3550 RL	3675 RT	3800 FL	3850 RL
Overall Length	35' 5"	40' 4"	37' 4"	38' 4"	40' 11"	39' 7"
UVW	11,374	13,234	13,455	12,584	13,580	12,324
Hitch Weight	2,550	2,270	2,380	2,400	2,110	2,575
GAWR	12,000	13,680	13,680	13,680	13,680	13,680
GVWR	14,550	15,950	16,060	16,080	15,790	16,255
Cargo Carrying Capacity	3,176	2,716	2,605	3,496	2,210	3,931
Exterior Height	13' 0"	13' 0"	13' 0"	13' 0"	13' 0"	13' 0"
Exterior Width	98"	98"	98"	98"	98"	98"
Interior Height (Bedroom)	81"	81"	81"	81"	105"	81"

	3030 RS	3450 RL	3550 RL	3675 RT	3800 FL	3850 RL
Interior Height (Living area)	105"	105"	105"	105"	81"	105"
Tire Size	235/80R16E	235/80R16E	235/80R16E	235/80R16E	235/80R16E	235/80R16E
Brake Size	12"	12"	12"	12"	12"	12"
Fresh Water	77 gal.	77 gal.	77 gal.	77 gal.	77 gal.	77 gal.
Waste Water	120 gal.	120 gal.	120 gal.	120 gal.	120 gal.	120 gal.
Water Heater	12 gal.	12 gal.	12 gal.	12 gal.	12 gal.	12 gal.
Furnace	42,000 BTU	42,000 BTU	42,000 BTU	42,000 BTU	42,000 BTU	42,000 BTU
Patio Awning	17'	19'	17'	17'	17'	19'
Exterior Storage (Cu. ft.)	102	127	102	127	102	127



**Calculated R-Values**

Sidewalls: Block foam (R9)

Roof: 2 layers of R7 batt (Fiberglass)(R24) and radiant foil insulation (R38)

Main Floor: 2 layers of R7 batt (Fiberglass) (combined with sub=R38) and radiant foil insulation (R38)

Sub Floor: 1/4" honey combed plastic with 2 layers of R7 batt (Fiberglass)

Front Wall: Fiberglass insulation and radiant foil insulation (R38)

End Wall: R14 batt (Fiberglass) insulation and radiant foil insulation (R38)

# STANDARD FEATURES

## INTERIOR

- Cherry hardwood raised panel glazed cabinet doors & drawers
- Cherry hardwood cabinet frames (Stiles)
- Crown molding cabinet accents
- Crown molding ceiling perimeter
- Hidden hinge adjustable cabinet hardware
- Solid wood (Baltic birch) drawer boxes
- Ball bearing, full extension drawer glides
- Congoleum "Designer Care" flooring (3 year cold crack warranty)
- Tri-color nylon twist residential carpet
- Satin nickel cabinet hardware & accents
- Satin nickel plumbing fixtures
- Solid cherry glazed slide room fascia frame
- Decorative solid wood frame entry door
- Solid wood exit assist handle

## GALLEY

- Solid surface polished counter tops w/undermount sink
- Dual bowl "GIANT" stainless steel kitchen sink
- High rise single handle pull down kitchen faucet
- Wine rack (3030RS, 3450RL, 3550RL)
- Solid cherry glazed raised panel refrigerator fronts
- Fantastic fan w/rain sensor

## INTERIOR LIGHTING

- LED lighting throughout
- Semi flush decorative ceiling light above dinette
- Ceiling fan w/light kit
- Lamp (End table) (3450RL, 3550RL & 3675RT)
- Mini pendant lights in galley (2)
- Dimmer switch

## FURNITURE & WINDOW COVERINGS

- Hide-a-bed sofa w/queen air mattress
- Bonded leather recliners w/leather recliners (2) w/lifetime frame warranty
- Free standing dinette table w/dual leafs
- 4 Dinette chairs w/flip-up storage
- Coat Closet
- Day/Night pleated shades
- Designer hard valance window treatments (Where available)

## BATHROOM

- Fantastic power roof vent
- Vanity-Solid surface polished counter top w/integrated bowl
- Porcelain toilet w/foot flush
- Fiberglass molded 1 piece shower w/seat

- "Mega" 30" x 60" fiberglass molded shower (3030RS, 3450RL)
- Shower skylight/dome
- Glass shower door
- Adjustable shower head
- Medicine cabinet w/mirrored door
- Towel bar
- Dedicated heat & AC duct

## BEDROOM

- Premium, innerspring mattress
- Cherry head board w/padded inserts
- Designer bedspread, pillows & sham
- Full-height hanging wardrobe
- Washer/Dryer prep
- W/D-Dual electrical circuits (Operates W/D at same time)
- Shoe caddy
- Cubby storage
- Chest of drawers
- Cedar lined closet and drawers
- Underbed storage
- Solid Cherry glazed slide fascia frame
- 2 Reading lights w/individual controls

## APPLIANCES

- Dometic 8 cu. ft. double door refrigerator
- Residential refrigerator (3800FL only)
- 3 Burner, high output range w/22" oven & range cover
- Convection microwave
- Central vacuum system w/powerd dust pan
- 42K BTU LP furnace
- Wire & frame for 2nd AC
- 15K Ducted AC w/quick cool feature
- 12 Gal gas/electric DSI water heater
- "Shurflo" On-demand high output water pump (3g/min at 55 PSI)
- Dual 30lb LP bottles w/auto switchover
- LP leak detector
- Carbon monoxide detector

## ELECTRONICS

- 5 Function remote control w/key fob
- Key fob operates slides, awning, patio light, front jacks & rear jacks
- 40" LCD HD TV w/heavy duty steel swing arm (Main living area)
- 32" LCD HD TV (Bedroom)
- ASA/Jensen theater system
- Digital TV antenna w/signal booster
- Cable TV hook-ups (Main living & bedroom)
- Cable TV hook-up (Exterior garage bulkhead)

- Satellite prep (Roof mount at road side front mushroom cap)
- National recognized electronic brands (Jensen & Toshiba)
- Exterior flip-down speakers

## EXTERIOR

- High-gloss (Premium quality & thickness) gel coat exterior
- Front Cap: Molded high gloss gel coat fiberglass
- Front Cap Design: Engineered w/extended turning radius (Chamfered front)
- Rear Cap: Molded high gloss gel coat fiberglass
- Laminated front bulkhead w/high gloss gel coat fiberglass
- 45° Angled skirts
- Slam latch 1.5 in thick luggage doors w/high gloss gel coat fiberglass
- Slide End Walls: Laminated w/high gloss gel coat fiberglass
- 30" x 76" Entry & screen door w/high gloss gel coat fiberglass
- Frameless premium windows
- Hydraulic slide room power
- Individual slide room selector switches
- Roof ladder
- Dual aluminum wrapped electric awnings
- Entry assist handle (XL-Folding)
- Forced air heated tanks
- 1.5" Belt rail w/caps (No exposed screws)
- Roto-cast spun seamless water/waste tanks
- Enclosed, insulated, heated underbelly (Forced air heat)
- Tank heating pads (Electric) (Dual heating sources)
- Dual roof vents

## SLIDE ROOM SEAL & GASKET SYSTEM

- Dual neoprene squeegee seals
- Exterior & interior "D" seals
- Exterior "H" seal

## EXTERIOR LIGHTING

- LED docking lights (2-Mounted into front cap)
- Rear Cap Lighting: White reverse & red running/braking lights
- Security lights (2)
- Amber patio light
- Entry door auto threshold light

## UTILITY DOCKING COMPARTMENT

- Light (12 volt)
- 110 Outlet (2)
- Soap dispenser
- Outside shower (Hot & cold)
- Black tank flush system
- Fresh water heater bypass valve
- Full coach water filtration system
- Winterizing bypass system
- Protected/insulated pull waste valves
- Waste hose storage tube
- Slam latch 1.5" luggage door

## CHASSIS/FOUNDATION

- I-beam "Z" frame power coated chassis
- Chamfered frame technology
- 12" I-beams frames/10" (3030RS)
- Dual Axles (7K w/12" beams) or (6K w/10" beams)
- Easy Lube axles
- Equa-flex suspension equalizer
- 8 Lug Hubs
- Aluminum rims 16"
- Goodyear Tires
- Spare tire (Inside storage mounted)
- Hydraulic front jacks
- 8" Radius front jack pads
- Electric rear stabilizing jacks
- Triple steel entry steps
- Pinless front jack legs
- Flush floor slide design w/steel ramp & glide bar (Main room slides)
- Hydraulic slide system w/2" steel rams
- Hydraulic pump station w/manual override
- "Trail Air" roto-flex extended hitch
- 18K extended hitch pin

## CONSTRUCTION

- Sidewalls: Aluminum welded frame & laminated 2" walls
- Roof: 4.5" Double radiused aluminum trusses on 16' centers
- Front Wall: Aluminum welded frame
- Rear Wall: Aluminum welded frame
- 3" One-piece seamless laminated floor
- Bath/Bed Deck: Aluminum welded frame
- Slide End Walls: Aluminum welded frame, laminated
- Slide Roof: Aluminum welded frame, laminated
- Slide Floor: 1" plywood

## INSULATION

- Sidewalls: Block foam (R9)
- Roof: 2 layers of R7 batt (Fiberglass)(R24) and radiant foil insulation (R38)

- Main Floor: 2 layers of R7 batt fiberglass insulation, combined with radiant foil insulation (R38)
- Sub Floor: 1/4" honey combed plastic with 2 layers of R7 batt (Fiberglass)
- Front Wall: Fiberglass insulation and radiant foil insulation (R38)
- End Wall: R14 batt (Fiberglass) insulation and radiant foil insulation (R38)

## ELECTRICAL SYSTEMS

- Centralized command center & monitor panel
- 70 Amp Converter
- 50 Amp Service
- Marine grade detachable 50 AMP power cord
- 12 Volt battery disconnect
- "Easy Diagnose" LED fuse indicator
- Battery prep box

# OPTIONS

## INTERIOR

- Serta deluxe king sized pillow top mattress (Donald Trump Edition)
- Queen bed (IPO king bed)
- Extra dinette chair
- Theater seats
- Stainless steel appliance package (Includes convection microwave)
- 4 Door Refrigerator (N/A 3030RS)
- Washer/dryer
- Fantastic fan w/rain sensor – Bedroom (N/A w/second AC)
- Aurora china toilet

## EXTERIOR

- Full-body paint package
- Custom partial paint package
- 3, 4 or 5 Slide out awnings
- Low profile 13,500 BTU ducted AC in bedroom
- Heat pump for 15,000 BTU AC
- Dual pane frameless windows w/safety glass
- Generator prep
- 5.5 LP Generator (Includes prep)
- "Level Up" one touch automatic 6-point hydraulic leveling system
- Outside ice maker
- Bike hitch
- "Trail Air" air bag pin box
- Exterior entertainment center w/32" LED TV, DVD, iPod control

CHOICES DESIGNED FOR YOUR LIFESTYLE



At Cardinal we believe luxury and convenience set the standard for travel at its finest. With a selection of six spacious slide out floorplans, luxurious residential styling, and all the comforts of home, there's plenty of room to enjoy life's adventures in style.

*Cardinal Fifth Wheels for the many roads to adventure.*

**Cardinal**  
BY FOREST RIVER

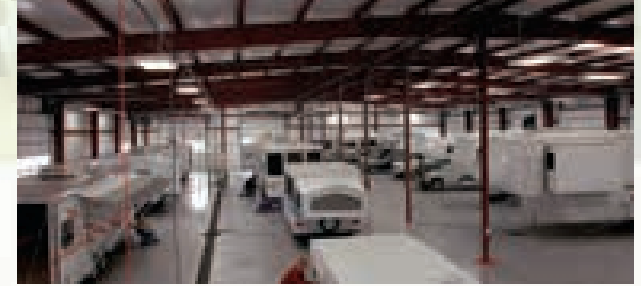
Cardinal Division  
58277 State Road 19 South • Elkhart, IN 46517  
(574) 296-7700  
[www.forestriverinc.com/cardinal](http://www.forestriverinc.com/cardinal)  
[www.forestriveraccessories.com](http://www.forestriveraccessories.com)



**Learn More**  
Scan this barcode using a QR Reader on your smart phone to learn more about Forest River.



A Berkshire Hathaway company.



**PRE-DELIVERY INSPECTION FACILITY**

20,000 square feet of quality assurance. The bare essentials for a premium product. This state-of-the-art facility gives immediate daily feedback to production for quality assurance in every unit built.



**Forest River, Inc. encourages our customers to purchase their Forest River products from a local dealership whenever possible for the following reasons:**

- 1) Forest River, Inc. dealers are independently owned and operated businesses so priority service and scheduling is at their discretion and is often provided to customers that purchased their unit at that dealership.
- 2) Purchasing locally allows customers to establish meaningful relationships with a dealer, enhancing the RV experience through assistance with product questions, user tips or RV regulations for your state or country, and much more!
- 3) Canadian customers must meet requirements to bring an RV purchased out of the country to their home. These requirements may involve additional inspections and certifications, taxes and fees. Your local Canadian Dealer is a professional at meeting these requirements.
- 4) Scheduling timely warranty repairs and adjustments through a local dealership provides far greater flexibility and convenience to you, the customer!

It is the goal of Forest River, Inc. that all of our RV owners fully enjoy the RV experience and that customer satisfaction meets or exceeds their expectations!

**24/7 EMERGENCY ROADSIDE ASSISTANCE**

For a worry-free ownership experience  
Forest River includes one year of Coach-Net RV Technical & Roadside Assistance with each RV purchase. Whether new to the RV lifestyle or an experienced RV enthusiast, Forest River owners have 24/7 access to technical, operational and emergency road service coverage throughout the US & Canada. Coach-Net's fast, dependable service is just a phone call away.

**Coach-Net®**

RV Technical & Roadside Assistance

Your CARDINAL Dealer