

AFFORDABLE LUXURY

PINNACLE

2012



PINNACLE® | LUXURY FIFTH WHEELS BY JAYCO®

AMERICA'S MOST LIVEABLE RV'S.



PINNACLE | LUXURY FIFTH WHEELS

AFFORDABLE
LUXURY



REVOLUTIONARY THINKING

A revolution in the RV industry, the luxurious 2012 Jayco Pinnacle represents the culmination of over 40 years of experience and innovation. Multi-tier residential-style cabinetry and ExpansiView floor-to-ceiling windows make the Culinary Dream Kitchen a reality. Meanwhile, a Jayco exclusive Cloud Ten king-sized mattress, bedroom door with privacy glass and decorative bedding transform the Tranquility Bedroom Suite into your own private sanctuary. Combined with our Gel-360 exterior shell and aerodynamic front and rear caps, Pinnacle is changing the way the world looks at fifth wheels.



NOBODY OFFERS A BETTER WARRANTY THAN WE DO

YOU WANT YOUR RV TO LAST A LONG TIME.

That's why we offer our exclusive 2-year Co-Pilot Warranty, the best and most comprehensive warranty program in the industry. Every Jayco RV undergoes rigorous quality control testing before it leaves the factory, so you can be confident your new Jayco will continue to provide the ultimate in liveability and reliability for years to come.

For a copy of our 2-year limited warranty with full terms and conditions, ask your local Jayco dealer.

ROADSIDE ASSISTANCE

Travel worry-free with Jayco's Customer First Roadside Assistance program, yours at no cost during your first year of ownership. This program is offered through National Motor Club, the largest RV emergency road service in the country, and gives you immediate access to dependable roadside assistance and support services with a simple phone call.



TO LEARN MORE ABOUT OUR QUALITY CONTROL TESTING, SCAN HERE WITH YOUR SMARTPHONE.



TRUE VALUE OF OWNERSHIP



MORE STANDARD FEATURES

We pack more standard features into our RVs than anyone else. Even better, they're features we know you'll want, designed to make your RV more home-like, comfortable and convenient. Because at Jayco, it's always been about liveability.



BRAND-NAME COMPONENTS

We like living up to the name we've built for ourselves. That's why we only use dependable components in our RVs, made by companies that value their reputation as much as we do ours.



LESS MAINTENANCE

Our top-quality materials and production techniques let you spend more time enjoying your new RV and less time maintaining it.



BETTER AVERAGE RESALE VALUE

In the last three years, Jayco owners have been banking on their investments. According to the NADA, Jayco's average resale value was 4.81% higher than the competition, giving Jayco the top resale value in the RV industry.

With Jayco, you get more amenities, more liveable, home-like features and superior construction for less maintenance and greater resale value. **Simply put, you won't find another RV packed with more TRUE VALUE.**



STANDARD STYLE

Who knew luxury could come standard? But with features, like **A** | a new aromatic cedar-lined walk-in closet, **B** | ExpansiView floor-to-ceiling windows and **C** | a porcelain foot-flush toilet, Pinnacle delivers.

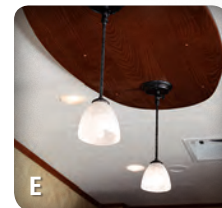
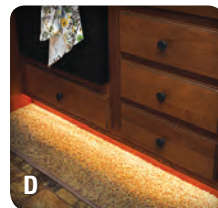
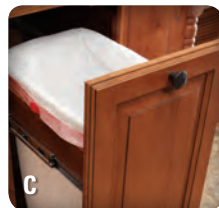
HIGH-END ENTERTAINMENT

Pinnacle offers up top-notch amenities, like **A** | a 40" Sharp LCD HDTV, **B** | all-in-one stereo unit with AM/FM/CD/DVD/MP3 player and a toggle switch for outside speakers (Customer Value Package) and **C** | Stor-Galore basement storage with a convenient, heated and enclosed Uni-dock utility center.



DURABLE AND CONVENIENT

You want your RV to handle whatever the road throws at it. That's where the Pinnacle's **A** | Goodyear radial tires and aluminum rims come in. Meanwhile, **B** | electric rear jacks and **C** | underbed storage on gas struts make camping that much easier.



A CULINARY DREAM FOR YEARS TO COME

Five years down the road, Pinnacle will still offer revolutionary luxury, in large part thanks to its stunning Culinary Dream Kitchen, complete with **A** | innovative, beautiful storage, **B** | high-gloss Corian kitchen countertops with dual sink covers, a pull-out kitchen faucet and Stonecast residential sink, **C** | sliding trash receptacle, **D** | decorative base cabinet accent panels, cabinet toe kicks and rope accent lighting and **E** | energy-efficient, pendant and halogen lighting.

JAYCO CONSTRUCTION

At Jayco, we've built a reputation for superior construction and craftsmanship. We always use top-quality materials and innovative manufacturing techniques—down to the smallest details. The result? Unmatched resale value and peace of mind in an RV that's built to handle whatever the road throws at it, while outlasting everything but your memories.



All Jayco products are green certified. Pinnacle received a gold rating through use of sustainable materials, environmentally friendly production methods and reduction of waste.



WALL CONSTRUCTION

- 1 Vacuum-bonded layers:** Involves 15-18 minutes of 144 tons of pressure to ensure a stronger bond
- 2 Gel-360 fiberglass exterior:** Withstands use and travel thanks to high-gloss, gel-coated sidewalls, entry door and baggage doors
- 3 Welded aluminum frames with metal backers:** Creates long-lasting durability

FLOOR CONSTRUCTION

- 4 5/8" tongue-and-groove plywood deck on 2" x 3" wooden floor joists:** More moisture resistant, plywood holds up to the elements
- 5 Reflective foil insulation:** Boasts an impressive R-22 insulation value
- 6 Poly Flex covering and an enclosed, heated underbelly:** Increases aerodynamics while protecting undertanks

ROOF CONSTRUCTION

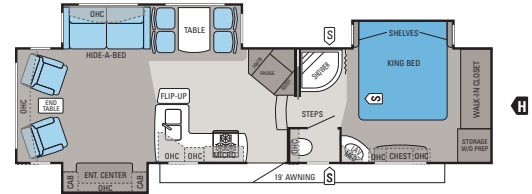
- 7 Vacuum-bonded layers:** Backed by computer monitoring and constant quality control checks, Jayco takes pride in its roof
- 8 1/4" plywood decking on 5" arched aluminum trusses:** Protects against moisture and resists aging
- 9 Seamless rubber roof:** Features one-piece construction, ensuring better leak protection

DETAIL CONSTRUCTION

- 10 MOR/ryde CRE 3000 suspension:** Transfers road shock and limits vibration using rubberized springs
- 11 Eurostyle front and rear caps:** Aerodynamic in design, reduces drag
- 12 Polar Barrier Package:** Extends camping season by providing protection against freezing* (as low as 0°F or -17°C).

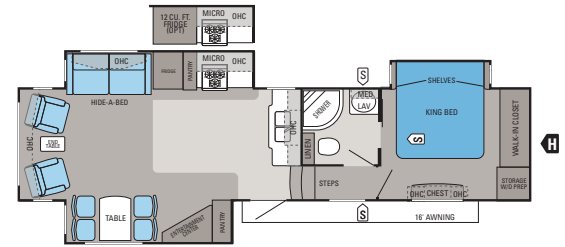
*Pinnacle was tested in 0°F (-17°C) weather over an extended period of time in a controlled environment and all functions of the coach were fully operational. Testing cannot account for natural elements, such as wind or moisture. In actual use, unit may not perform as well. In addition, outside components are subject to freezing and require steps to properly insulate. Jayco's warranty does not cover damage caused by freezing.

FLOORPLANS



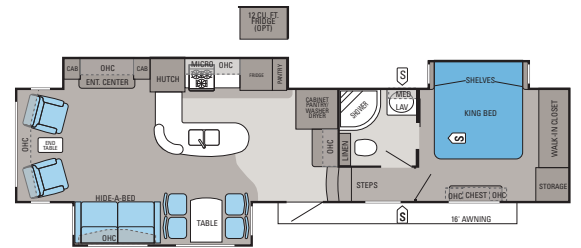
PINNACLE | 31RLTS

Ext. Length: 34' 9" Ext. Height: 152" Unloaded Wt. (lbs.): 10,865 Sleeps: 4



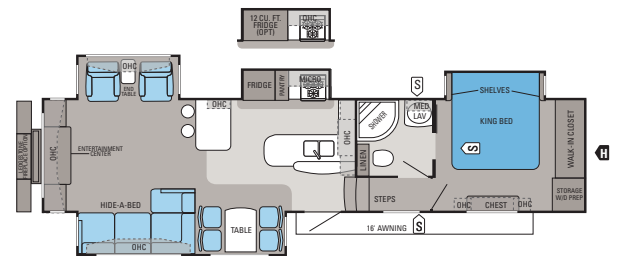
PINNACLE | 34RLTS

Ext. Length: 38' 3" Ext. Height: 155" Unloaded Wt. (lbs.): 11,410 Sleeps: 4



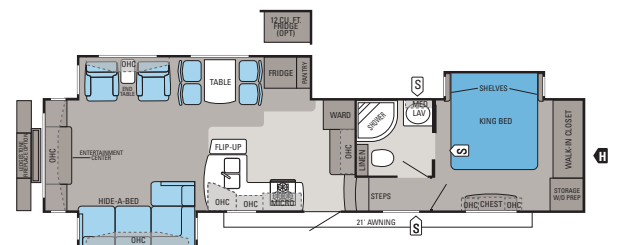
PINNACLE | 35LKTS

Ext. Length: 40' 4" Ext. Height: 155" Unloaded Wt. (lbs.): 12,200 Sleeps: 4



PINNACLE | 36REQS

Ext. Length: 40' 1" Ext. Height: 158" Unloaded Wt. (lbs.): 12,300 Sleeps: 4



PINNACLE | 36RETS

Ext. Length: 40' 2" Ext. Height: 155" Unloaded Wt. (lbs.): 12,085 Sleeps: 4

STANDARDS AND OPTIONS

STANDARD INTERIOR EQUIPMENT

- 8 cu. ft. Norcold refrigerator with raised-panel front
- 30" over-the-range microwave oven with carousel
- Air conditioner with quick-cool feature and digital thermostat
- Aromatic cedar-lined front wardrobe walk-in closet
- Bedroom satellite receiver prep cabinet
- Cable and satellite TV prepped
- Cabinet toe kicks at bases throughout
- Crank-up HDTV antenna with signal booster
- Cloud Ten king-sized pillowtop mattress
- Desk at entertainment center (n/a 34RLTS)
- ExpansiView opera-style floor-to-ceiling dining area windows
- Flush-mount 3-burner range with 9,000-BTU SuperBurner and piezo igniter
- Full-trunk, under-bed storage with gas struts
- Full-extension ball bearing drawer guides (75-lb. capacity)
- Full-height pantry with adjustable shelves
- Hammered-style wrought iron cabinetry hardware
- Hardwood cabinetry throughout with residential multi-tiered design and mullion-style cabinet doors
- Hide-a-bed sofa with air mattress, blanket drawer and hidden storage
- Large bathroom porcelain sink
- Oversized 21" oven
- Porcelain toilet with foot flush
- Power lift vent with fan in living room and/or kitchen
- Radius shower surround design with glass door
- Residential-sized bedroom dresser with full-width drawers
- Residential-style pre-drilled and screwed cabinet construction
- Roof-mounted antenna for radio
- Stonecast kitchen sink with pull-out sprayer
- Vented washer/dryer prep cabinet with shelving unit
- Washer/dryer prep

STANDARD EXTERIOR EQUIPMENT

- 2" x 3" longitudinal floor joists placed on 16" centers with 5/8" tongue-and-groove plywood floor decking
- 16" Goodyear radial tires
- 50-amp power cord

- Adjustable axle hangers
- Battery disconnect switch
- Black holding tank sprayer
- Dexter Nev-R-Adjust brakes
- Double 30-lb. propane bottles with regulator on sliding tray
- Electric-powered front jacks and electric rear stabilizer jacks
- Eurostyle, gel-coated aerodynamic front and rear caps
- Gel-360 exterior shell
- Heated and enclosed fresh water and holding tanks
- Heated, enclosed Uni-Dock utility center
- Hitch light
- I-Class cambered structural steel I-beam frame
- Keyless entry
- MOR/ryde CRE 3000 suspension system
- Outdoor media center with in-and-out bracket in basement
- Polar Barrier insulation package
- Poly Flex one-piece moisture barrier underbelly covering
- Rain guttering with extended downspouts
- Safety step light
- Seamless one-piece rubber roof
- Systems monitor panel
- Tinted safety-glass windows
- TuffShell vacuum-bonded 5" crowned laminated roof
- TuffShell vacuum-bonded laminated sidewalls with welded tubular aluminum frame
- Under-mounted spare tire with carrier
- Water heater bypass system
- Water system winterization kit

OPTIONS

- 2nd 13,500 BTU low-profile bedroom A/C
- 4-point auto leveling system
- 12 cu. ft. refrigerator (n/a 31RLTS)
- 5,500-watt generator (prep included)
- Bike rack/cargo tray system
- Central vacuum system
- Fireplace
- Generator prep
- In-and-out 22" LCD HDTV in bedroom
- Key fob remote control

- Kitchen power vent
- Ledgestone fireplace (select models)
- MOR/ryde pin box
- Over-the-range convection microwave and oven with range top
- Portable, outside gas grill
- Premium Paint Package
- Satellite kit (includes dish, tripod and a/v cables)
- Select Comfort Sleep Number mattress
- Slideout awnings with metal wrap
- Step ladder/desk chair
- Thermal pane tinted safety-glass windows

CUSTOMER VALUE PACKAGE (MANDATORY)

- 12-gal. gas/electric DSI water heater with quick recovery
- 15,000-BTU A/C with louvered/directional ceiling vents and Chillgrille
- Bath skylight
- Carefree Travel'r 12V electric awning with patio light convenience outlet
- Floor-mounted safe under bed
- Large exterior main entry grab handle
- Large power vent in bathroom
- Multi-Media Premium Sound System AM/FM/CD/DVD/MP3 player with toggle switch for outside speakers
- Security lights (2)
- Water purification system

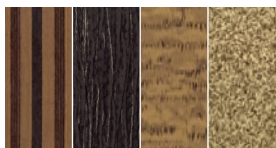
SUMMIT UPGRADE PACKAGE (MANDATORY)

- 40" LCD HDTV in living area
- Aluminum rims
- Caramel Glazed Concord Cherry stained hardwood cabinetry
- Caramel Glazed Concord Cherry stained hardwood slideout fascias
- Free-standing table and chairs with table extension and hidden seat storage
- High-gloss Corian kitchen countertops with sink cover inserts
- High-gloss, gel-coated fiberglass sidewalls, entry door and baggage doors
- Ultraleather rocker recliners

SPECIFICATIONS

FLOORPLAN	EXT. LENGTH	EXT. WIDTH	EXTERIOR HEIGHT (WITH A/C)	EXT. HEIGHT (WITH OPT. BEDROOM A/C)	INT. HEIGHT	UNLOADED VEHICLE WEIGHT (LBS.)	DRY HITCH WEIGHT (LBS.)	GROSS VEHICLE WEIGHT RATING (LBS.)	CARGO CARRYING CAPACITY (LBS.)	FRESH WATER CAPACITY (GAL.) (WITH WATER HEATER)	GRAY WASTEWATER CAPACITY (GAL.)	TOILET/BLACK WASTEWATER CAPACITY (GAL.)
31RLTS	34' 9"	96"	152"	160"	81"	10,865	2,275	14,950	4,085	87	86	49
34RLTS	38' 3"	96"	155"	162"	81"	11,410	2,460	14,950	3,540	87	84	49
35LKTS	40' 4"	96"	155"	159"	81"	12,200	2,665	15,950	3,750	87	86	49
36REQS	40' 1"	96"	158"	161"	81"	12,300	2,590	15,950	3,650	87	84	49
36RETS	40' 2"	96"	155"	162"	81"	12,085	2,445	15,950	3,865	87	86	49

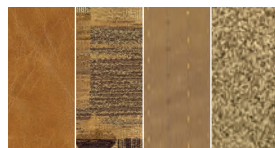
INTERIOR DÉCOR CHOICES



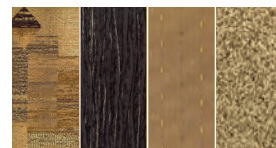
CARAMEL



ESPRESSO



SADDLE



TRUFFLE



WOOD

EXTERIOR PAINT OPTIONS



STANDARD



PREMIUM PAINT (OPTIONAL)



FOR A COMPLETE LIST OF STANDARDS AND OPTIONS, SCAN HERE WITH YOUR SMARTPHONE OR VISIT JAYCO.COM.

A TRADITION OF LIVEABILITY

THE JAYCO STORY BEGAN IN 1968 when Jayco founder Lloyd Bontrager created an innovative, easy-to-use lifter system that led to a better fold-down camper. Loaded with more comforts and conveniences, Lloyd believed his camper would bring people closer together because it was more liveable. A devoted family man, Lloyd's passion extended to his business as well. In fact, our company's success stems from his insistence on treating everyone at Jayco as family — from our factory to our front office, our salespeople to our suppliers, and our customers to our community.

BLENDING OLD WORLD AMISH CRAFTSMANSHIP WITH INNOVATIVE TECHNOLOGY, Jayco is the nation's largest family-owned and operated RV manufacturer today. And while our product line has grown considerably over the years, every unit we build is still guided by Lloyd's vision and a humble desire to help make it easier for families to explore together and relax together. It's what separates us from other RV manufacturers. And it's what continues to make Jayco America's Most Liveable RVs.



AMERICA'S MOST **LIVEABLE** RVs.



Jayco proudly sponsors Tread Lightly!, a nonprofit organization whose mission is to empower generations to enjoy the outdoors responsibly through education and restoration.

Unloaded Vehicle Weight (UVW): Sometimes referred to as "Dry Weight," UVW means the typical weight of this trailer as built at the factory. The UVW, as used in product literature and other promotional materials, does not include cargo, fresh water, propane, options or dealer-installed accessories.

Gross Vehicle Weight Rating (GVWR): GVWR means the maximum permissible weight of the trailer, including the UVW plus passengers, personal items, all cargo, fluids, options, and dealer-installed accessories. The GVWR is equal to or greater than the sum of the UVW and the CCC.



From RV insurance to extended warranties, JayPlus has it covered. Ask your Jayco dealer about our exclusive JayPlus program today.

Cargo Carrying Capacity (CCC): CCC means the maximum weight of all passengers, personal items, food, fresh water, propane, tools, other cargo and dealer-installed accessories that can be carried by the trailer. CCC is equal to or less than GVWR minus UVW. The addition of options will decrease the CCC.

Hitch Weight (HW): The hitch weight, as used in product literature and other promotional materials, does not include cargo, fresh water, propane gas, options or dealer-installed accessories. The addition of these types of items will either add to or subtract from the stated hitch weight.



As a Jayco owner, you can be part of the Jayco Jafari International Travel Club. Ask your dealer about the Jafari "flight" in your area, write Jayco or visit our website.

It is important for your safety and enjoyment that your tow vehicle be adequately sized and equipped to tow and handle the GVWR of the RV you select. Review weights and rating of your tow vehicle and consult a competent advisor for questions or advice. Whether you are new to RVing or a veteran, get a feel for the performance of your tow vehicle before heading out on the roadways. When you tow an RV, you must drive differently than when you drive a single vehicle. Practice hooking up, driving, backing up and braking in a safe environment or seek out professional instruction. Jayco affixes a weight label to each RV which lists weight information for that vehicle. See specifications chart inside.

Jayco, Inc., P.O. Box 460, Middlebury, IN 46540, www.jayco.com

See dealer for further information and prices. All information in this brochure is the latest available at the time of publication approval. Jayco reserves the right to make changes and to discontinue models without notice or obligation. Photos in this brochure may show optional equipment and props for photography purposes. RVs built for sale in Canada may differ to conform to Canadian codes. ©2011 Jayco, Inc. 12-PNCL-PL 0611-100K Printed in U.S.A.