

# BUILT FOR RV PEOPLE

# *EAGLE*

2012



EAGLE® | TRAVEL TRAILERS AND FIFTH WHEELS BY JAYCO®

AMERICA'S MOST LIVEABLE RV'S.



EAGLE FIFTH WHEEL 351MKTS | EMERALD



## AMERICA'S MOST LIVEABLE RVs

Liveability means making your camping experience more comfortable, in an RV you can depend on, at a price you'll feel good about. It's spending quality time together, without spending a fortune. And it's what makes Jayco America's Most Liveable RVs.

# BUILT BETTER PRICED BETTER

If you love the RV lifestyle, then you're going to love the 2012 Jayco Eagle. Both the Eagle travel trailer and fifth wheel offer more high-end liveable features and more comfortable amenities than the competition, such as hardwood raised-panel cabinetry, residential-style furniture and a Norcold adjustable refrigerator, to name a few. Not only is Eagle the smart choice, it's a choice you'll be comfortable with for a long time.

## EAGLE TRAVEL TRAILER

Boasting spacious interiors, a modern kitchen, Concord Cherry raised-panel cabinetry and antique nickel cabinet hardware, you'll feel right at home in your Eagle travel trailer.

SLEEPING CAPACITY | **UP TO 10**

EXTERIOR LENGTH | **33' 11"– 36' 8"**

UNLOADED WEIGHT | **7,835–8,770**

FLOORPLANS | **4**

## EAGLE FIFTH WHEEL

With a tight-turn radius, the Eagle fifth wheel is easy to park, making it an ideal upgrade from typical fifth wheels. And packed with more standard features, it's anything but typical.

SLEEPING CAPACITY | **UP TO 10**

EXTERIOR LENGTH | **35'– 41' 3"**

UNLOADED WEIGHT | **10,200–11,920**

FLOORPLANS | **8**



EAGLE | TRAVEL TRAILERS AND FIFTH WHEELS

BUILT FOR  
RV PEOPLE



EAGLE TRAVEL TRAILER 330RLTS | BROWNSTONE

EAGLE TRAVEL TRAILER 330RLTS | BROWNSTONE



EAGLE | TRAVEL TRAILERS



# MORE AMENITIES

You and your guests will love every minute in your new Eagle travel trailer, thanks to its many standard, convenient features, like an easily convertible Dream Dinette, a comfortable hide-a-bed sofa and Carefree electric adjustable-pitch awning.

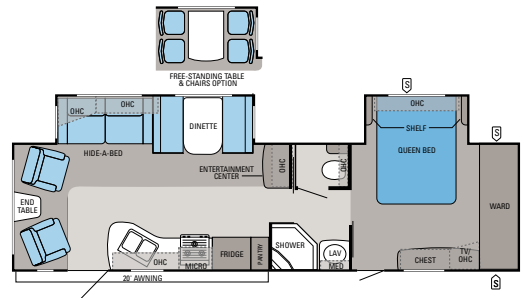


EAGLE TRAVEL TRAILER 330RLTS | BROWNSTONE



EAGLE TRAVEL TRAILER 330RLTS | BROWNSTONE

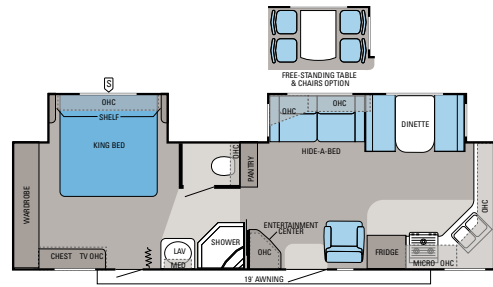
FLOORPLANS



- S STORAGE
- H TRAILER HITCH
- LAV BATHROOM SINK
- MICRO MICROWAVE
- OHC OVERHEAD CABINETS
- FRIDGE REFRIGERATOR
- WARD WARDROBE

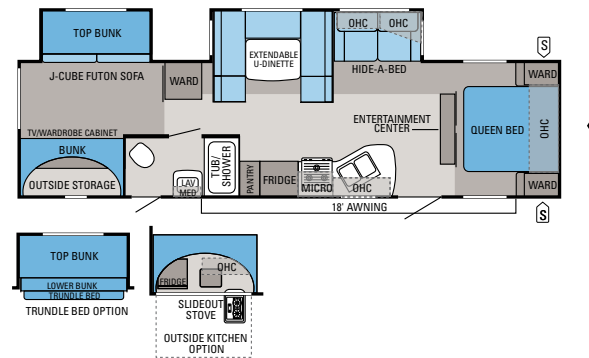
TRAVEL TRAILER | 320RLDS

Ext. Length: 35' 6" Ext. Height: 134" Unloaded Wt. (lbs.): 8,040 Sleeps: 4-6



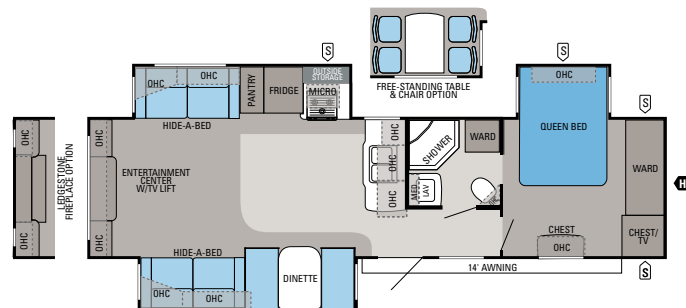
TRAVEL TRAILER | 322FKS

Ext. Length: 33' 11" Ext. Height: 134" Unloaded Wt. (lbs.): 7,835 Sleeps: 4-6



TRAVEL TRAILER | 324BHS

Ext. Length: 35' 6" Ext. Height: 134" Unloaded Wt. (lbs.): 7,990 Sleeps: 10



TRAVEL TRAILER | 330RLTS

Ext. Length: 36' 8" Ext. Height: 134" Unloaded Weight (lbs.): 8,770 Sleeps: 6-8

FITS YOUR LIFE

Whether you're looking for a king-sized bed for you, a bunk room for the kids or a spacious living room for entertaining friends, the Eagle travel trailer features four floorplans built to suit your lifestyle.



EAGLE FIFTH WHEEL 351MKTS | EMERALD



EAGLE FIFTH WHEEL 375BHLT | AMBER



EAGLE FIFTH WHEEL 351MKTS | EMERALD



375BHLT | AMBER

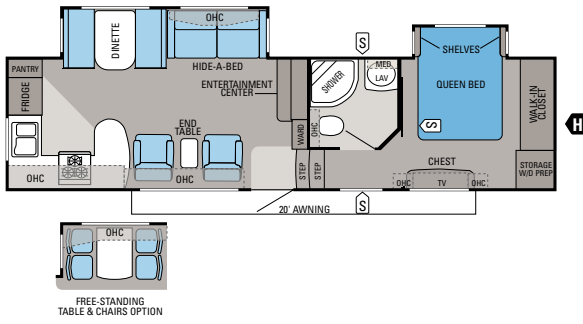
EAGLE | FIFTH WHEELS



# FOUR-SEASON FUN

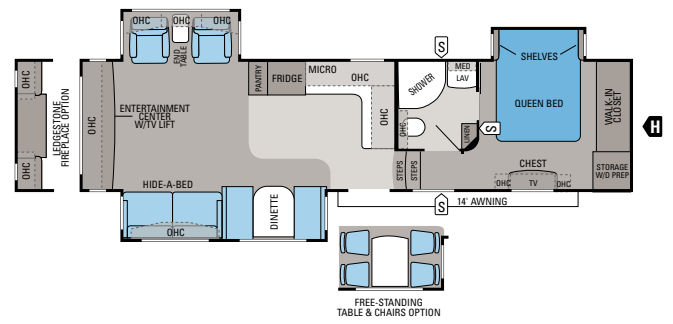
The Eagle Fifth Wheel's Polar Barrier protects against freezing in temperatures as low as 0° (-17° C), giving you the ability to camp during all four seasons. And with standard features like a 32" LCD HDTV, rocker recliners and a loft room for the kids (select models), you'll definitely want to stay out as long as possible.

FLOORPLANS



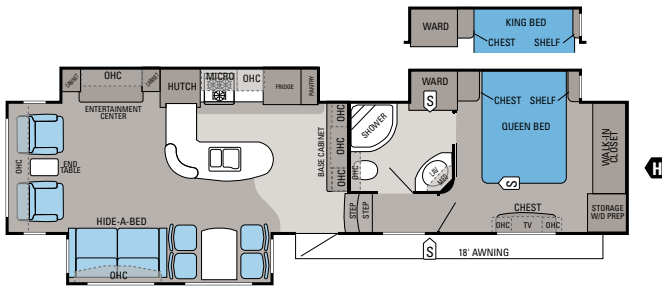
**FIFTH WHEEL | 313RKS**

Ext. Length: 35' Ext. Height: 151" Unloaded Wt. (lbs.): 10,200 Sleeps: 4-6



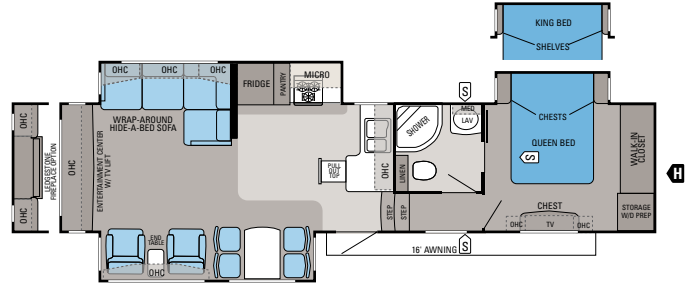
**FIFTH WHEEL | 321RLTS**

Ext. Length: 35' 5" Ext. Height: 151" Unloaded Weight (lbs.): 10,525 Sleeps: 4-6



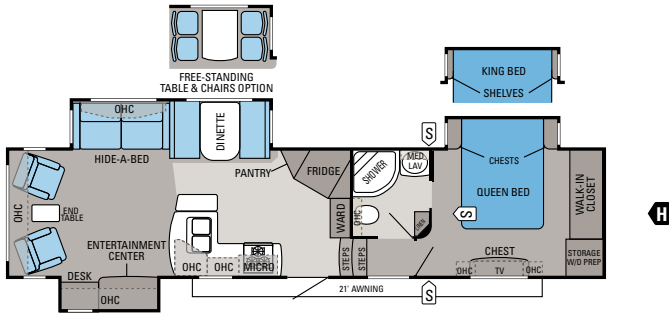
**FIFTH WHEEL | 351MKTS**

Ext. Length: 39' 6" Ext. Height: 152" Unloaded Wt. (lbs.): 11,175 Sleeps: 4



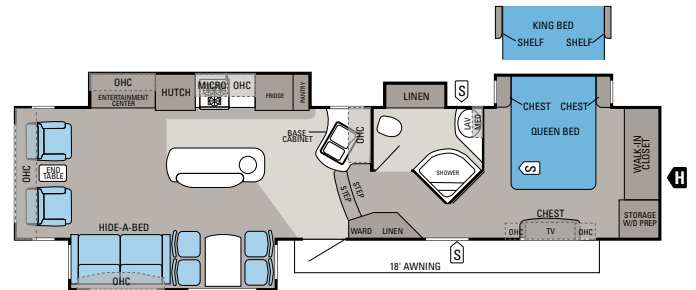
**FIFTH WHEEL | 351RLTS**

Ext. Length: 38' 6" Ext. Height: 151" Unloaded Wt. (lbs.): 11,395 Sleeps: 4



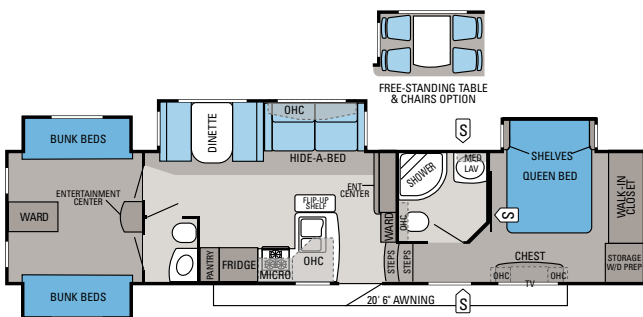
**FIFTH WHEEL | 351SKTS**

Ext. Length: 38' 11" Ext. Height: 151" Unloaded Wt. (lbs.): 10,880 Sleeps: 4-6



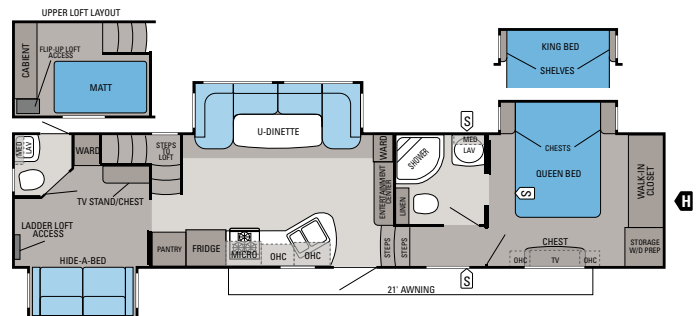
**FIFTH WHEEL | 361MKQS**

Ext. Length: TBD Ext. Height: TBD Unloaded Wt. (lbs.): TBD Sleeps: 4



**FIFTH WHEEL | 365BHS**

Ext. Length: 40' Ext. Height: 160" Unloaded Wt. (lbs.): 11,790 Sleeps: 8-10



**FIFTH WHEEL | 375BHLT**

Ext. Length: 41' 3" Ext. Height: 160" Unloaded Wt. (lbs.): 11,920 Sleeps: 6-7

\*Eagle FW was tested in 0°F (-17°C) weather over an extended period of time in a controlled environment and all functions of the coach were fully operational. Testing cannot account for natural elements, such as wind or moisture. In actual use, unit may not perform as well. In addition, outside components are subject to freezing and require steps to properly insulate. Jayco's warranty does not cover damage caused by freezing.



# NOBODY OFFERS A BETTER WARRANTY THAN WE DO

## YOU WANT YOUR RV TO LAST A LONG TIME.

That's why we offer our exclusive 2-year Co-Pilot Warranty, the best and most comprehensive warranty program in the industry. Every Jayco RV undergoes rigorous quality control testing before it leaves the factory, so you can be confident your new Jayco will continue to provide the ultimate in liveability and reliability for years to come.

For a copy of our 2-year limited warranty with full terms and conditions, ask your local Jayco dealer.

## ROADSIDE ASSISTANCE

Travel worry-free with Jayco's Customer First Roadside Assistance program, yours at no cost during your first year of ownership. This program is offered through National Motor Club, the largest RV emergency road service in the country, and gives you immediate access to dependable roadside assistance and support services with a simple phone call.



TO LEARN MORE ABOUT OUR QUALITY CONTROL TESTING, SCAN HERE WITH YOUR SMARTPHONE.



## TRUE VALUE OF OWNERSHIP

### ↑ MORE STANDARD FEATURES

We pack more standard features into our RVs than anyone else. Even better, they're features we know you'll want, designed to make your RV more home-like, comfortable and convenient. Because at Jayco, it's always been about liveability.

### ↑ BRAND-NAME COMPONENTS

We like living up to the name we've built for ourselves. That's why we only use dependable components in our RVs, made by companies that value their reputation as much as we do ours.

### ↑ LESS MAINTENANCE

Our top-quality materials and production techniques let you spend more time enjoying your new RV and less time maintaining it.

### ↑ BETTER AVERAGE RESALE VALUE

In the last three years, Jayco owners have been banking on their investments. According to the NADA, Jayco's average resale value was 4.81% higher than the competition, giving Jayco the top resale value in the RV industry.



With Jayco, you get more amenities, more liveable, home-like features and superior construction for less maintenance and greater resale value. **Simply put, you won't find another RV packed with more TRUE VALUE.**



### CONVENIENT AMENITIES

With standard features, like **A** | the Eagle fifth wheel's walk-in closet and **B** | porcelain foot-flush toilet, you'll forget you're in an RV, while **C** | the Stor-Galore pass-through basement storage makes it easy to get to your gear (FW).

### ENTERTAINMENT AND ESSENTIALS

Eagle offers up top-notch features with its **A** | optional LedgeStone fireplace and standard 32" LCD HDTV, **B** | a reliable Norcold refrigerator with adjustable temperature, **C** | solid-surface countertops with undermounted deep residential-style, double-bowl sink and the Premium Package single-lever stainless kitchen faucet with pull-out sprayer.



### PUTTING THE FOCUS ON CAMPING

At Jayco, we want your RV to be easy to use. That's where the Eagle travel trailer's **A** | electric awning comes in. With its push-button adjustable pitch, you can easily adjust it for desired shade and water runoff. And when the wind picks up, the awning automatically closes when its movement exceeds a predetermined threshold. Our fifth wheels also feature **B** | a convenient propane sliding tray, giving you easy access to your propane bottles.



### LONG-LASTING QUALITY CONSTRUCTION

Known for quality construction, Eagle is built to hold its value. Thanks to features, like **A** | heavy-duty, full-extension ball bearing drawer guides, **B** | aerodynamic front cap and **C** | Amish-crafted hardwood cabinetry with new durable pre-drilled and screwed cabinet construction, you'll appreciate every detail.

# JAYCO CONSTRUCTION

At Jayco, we've built a reputation for superior construction and craftsmanship. We always use top-quality materials and innovative manufacturing techniques—down to the smallest details. The result? Unmatched resale value and peace of mind in an RV that's built to handle whatever the road throws at it, while outlasting everything but your memories.



## OLD WORLD CRAFTSMANSHIP

Jayco's dedicated production team includes Amish craftsmen who build with well-honed woodworking techniques passed down for generations.



## PREMIUM STEEL FRAME

Our I-Class structural I-beam features a one-piece design, more durable than other welded three-piece frames, which can warp at the welded seams. Meanwhile, our A-frame, fully integrated, won't buckle because it isn't welded.



All Jayco products are green certified. Eagle received a gold rating through use of sustainable materials, environmentally friendly production methods and reduction of waste.



EAGLE | FIFTH WHEELS

## WALL CONSTRUCTION

- 1 Vacuum-bonded layers:** Involves 15-18 minutes of 144 tons of pressure to ensure a stronger bond
- 2 Smooth fiberglass exterior:** Withstands use and travel—and Mother Nature, too
- 3 Welded aluminum frames with metal backers:** Creates long-lasting durability
- 4 Eurostyle front and rear caps:** Protects unit's most vulnerable areas; makes Eagle more aerodynamic

## FLOOR CONSTRUCTION

- 5 5/8" tongue-and-groove plywood deck on 2"x 3" wooden floor joists:** More moisture resistant, plywood holds up to the elements
- 6 Reflective foil insulation:** Keeps heat in and cold out with an impressive R-24 insulation value
- 7 Poly Flex covering and an enclosed, heated underbelly:** Increases aerodynamics while protecting the undertanks, including Eagle's WaterWorks system, which holds 85-plus gallons of fresh water

## ROOF CONSTRUCTION

- 8 Vacuum-bonded layers:** Backed by computer monitoring and constant quality control checks, Jayco prides itself on building a strong roof
- 9 1/4" plywood decking on 5" arched aluminum trusses:** Protects against moisture and resists aging
- 10 Bead-foam insulation (R-21):** Maintains interior temperatures
- 11 Seamless rubber roof:** Features one-piece construction, ensuring better leak protection

## WHEEL FEATURES

- 12 Dexter Nev-R-Adjust brakes:** Adjusts continuously in forward motion, providing half the stopping distance compared to other brakes
- 13 MOR/ryde CRE 3000 suspension:** Transfers road shock = and limits vibration with rubber springs

STANDARDS AND OPTIONS

STANDARD INTERIOR EQUIPMENT

- 3-burner range with 9,000-BTU SuperBurner and piezo igniter
- 8 cu. ft. flush-mount double-door refrigerator with raised-panel fronts
- 32" LCD HDTV in living area
- 81" ceiling height (TT)
- A/C Chillgrille
- Auto-ignition furnace with wall thermostat
- Ball bearing drawer guides, 50-lb. capacity with full-drawer extension (TT)
- Ball bearing drawer guides, 100-lb. capacity with full-drawer extension (FW)
- Bi-fold range cover
- Cable and satellite TV prepped
- Crank-up HDTV antenna with signal booster
- Decorative headboard in bedroom
- Deep storage drawers under booth dinette
- Dream Dinette table mechanism (select models)
- Hide-a-bed sofa(s) with air mattress(es)
- Pre-drilled and screwed cabinet construction
- Pleated day/night shades
- Porcelain toilet with foot flush
- Oversized 21" oven
- Raised-panel cabinet doors throughout
- Raised-panel refrigerator front
- Residential furniture, cushions and window treatments designed and made by Jayco
- Rocker recliners (FW)
- Roof-mounted antenna for radio
- Seamless ABS tub/shower surround with glass shower door
- Solid-surface kitchen countertops
- Solid-surface sink covers (2)
- Swivel rockers (TT)
- Systems monitor panel
- Under-bed storage, bed lifts easily on gas struts
- Undermounted deep residential-style, double-bowl sink
- Walk-in closet (FW)
- Water heater bypass system

STANDARD EXTERIOR EQUIPMENT

- 5/8" tongue-and-groove plywood main floor decking (FW)
- 2" x 3" longitudinal floor studs placed on 16" centers (FW)
- 12V electrical system with deluxe 120V 45-amp power converter (TT)
- 12V electrical system with deluxe 120V 90-amp power converter (FW)
- 15" radial tires (TT)
- 16" radial tires (FW)
- 30-amp power cord (select models)
- 30" x 72" radius-cornered main entry door
- 50-amp power cord (select models)
- 85-plus gallons of fresh water
- Aerodynamic wrap-around front fiberglass cap
- ABS gas bottle cover (TT)
- Battery box for two batteries (FW)
- Big Easy entrance step with 10" deep treads
- Black holding tank sprayer
- Dexter Nev-R-Adjust brakes
- Double 30-lb. propane bottles with regulator
- Electric front jacks and rear stabilizer jacks (FW)
- E-Z Lube axles
- Frame prepped for bike rack/cargo tray (select models)
- FRP smooth fiberglass sidewall exteriors
- Fully decked roof with 1/4" plywood (FW)
- Heated and enclosed fresh water tank and holding tanks
- High-output marine grade exterior speakers (2)
- I-Class cambered structural steel I-beam frame
- Lockable baggage doors insulated and radius-cornered with heavy-duty grab handles
- MOR/ryde CRE 3000 axle equalizer
- Outside shower
- Polar Barrier insulation package (FW)
- Poly Flex one-piece moisture barrier underbelly covering
- Prep for outside grill
- Rain gutting, molded with extended drip spouts
- Reflective foil insulation in slideout floors/roof

- Safety step light
- Seamless one-piece rubber roof
- Spare tire with carrier
- Stabilizer jacks (4) (TT)
- Stor-Galore basement storage (FW)
- Tinted safety-glass windows
- TuffShell vacuum-bonded floor (TT)
- TuffShell vacuum-bonded 5" crowned laminated roof (FW)
- TuffShell vacuum-bonded laminated sidewalls, back wall and slideouts with welded tubular aluminum framework
- Uni-Dock utility center, heated/enclosed (FW)
- Water system winterization kit

OPTIONS

- 2nd 13,500-BTU A/C (select TT models)
- 2nd 13,500-BTU A/C in bedroom (FW)
- 22" LCD TV in bedroom (FW)
- 40" LCD HDTV in lieu of 32" LCD HDTV (FW)
- 5,500-watt generator with generator prep (FW)
- Bike rack/cargo tray system
- CD stereo in bunk (select models)
- Customer Value Package
- Customer Value Package with 15,000-BTU A/C (TT)
- Electric stabilizer jacks (TT)
- Electric tongue jack (TT)
- Fireplace (select models)
- Free-standing table with 4 chairs
- Glacier Package (extra layer of R-7 insulation in roof and R-15 foil in main floor) (TT)
- Hand-held remote control for patio awning, slideouts, front jacks, patio light and rear stabilizer jacks (FW)
- Keyless entry
- King-sized bed (select FW models)
- Ledgestone fireplace (select models)
- Linoleum in living area (select models)
- MOR/ryde pin box (FW)
- Outside kitchen (select models)
- Portable, outside gas grill
- Rocker recliners in lieu of swivel rockers (TT)
- Roof ladder

- Satellite kit, includes tripod, dish, A/V cables
- Slideout awnings
- Thermal pane tinted safety-glass windows
- Trundle bed (select models)

PREMIUM INTERIOR PACKAGE (FW ONLY)

- Burnished Cherry cabinetry
- Diamondflor vinyl flooring in kitchen and bath
- Hard-surface kitchen countertops with sink cover inserts
- Power lift vent in living room and/or rear bedroom
- Recessed halogen ceiling lights throughout
- Single-lever stainless kitchen faucet with pull-out sprayer
- Undermounted double-bowl stonecast kitchen sink
- Upgraded bedding package
- Upgraded hide-a-bed sofa with air mattress

CUSTOMER VALUE PACKAGE

- 10-gal. gas/electric DSI auto-ignition water heater (TT)
- 12-gal. gas/electric DSI auto-ignition water heater (FW)
- 13,500-BTU A/C with wall thermostat with louvered directional ceiling vents (TT)
- 15,000-BTU A/C with wall thermostat with louvered directional ceiling vents (FW)
- Aluminum rims
- Bathroom power vent
- Carefree Travel'r 12V electric patio awning (with adjustable pitch on TT)
- Deluxe 80" pillowtop mattress
- Floor-mounted safe (FW)
- Foldable exterior grab handle
- Microwave oven with carousel
- Multi-Media Premium Sound System AM/FM/CD/DVD stereo with MP3 input jack
- Security lights (2)
- Skylight in tub/shower
- Vacuum-bonded 5" crowned laminated roof with R-25 insulation value (FW)
- Water purification system

SPECIFICATIONS

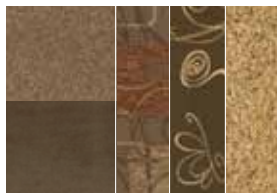
	FLOORPLAN	EXT. LENGTH	EXT. WIDTH	EXT. HEIGHT (WITH A/C)	EXT. HEIGHT (WITH OPT. BEDROOM A/C)	INT. HEIGHT	UNLOADED VEHICLE WEIGHT (LBS.)	DRY HITCH WEIGHT (LBS.)	GROSS VEHICLE WEIGHT RATING (LBS.)	CARGO CARRYING CAPACITY (LBS.)	FRESH WATER CAPACITY (GAL.) (WITH WATER HEATER)	GRAY WASTEWATER CAPACITY (GAL.)	TOILET/BLACK WASTEWATER CAPACITY (GAL.)
EAGLE TRAVEL TRAILER	320RLDS	35' 6"	96"	134"	-	81"	8,040	1,225	10,500	2,460	90	37	37
	322FKS	33' 11"	96"	134"	-	81"	7,835	1,170	10,250	2,415	90	85.5	48.5
	324BHDS	35' 6"	96"	134"	-	81"	7,990	1,055	10,250	2,260	90	37	37
EAGLE FIFTH WHEEL	330RLTS	36' 8"	96"	134"	-	81"	8,770	1,400	11,250	2,480	90	37	37
	313RKS	35'	96"	151"	160"	103"	10,200	2,555	14,000	3,800	87	86	50
	321RLTS	35' 5"	96"	151"	160"	103"	10,525	2,340	14,500	3,975	87	86	50
	351MKTS	39' 6"	96"	152"	160"	103"	11,175	2,225	15,250	4,075	85	84	50
	351RLTS	38' 6"	96"	151"	160"	103"	11,395	2,285	15,250	3,855	85	84	50
	351SKTS	38' 11"	96"	151"	158"	103"	10,880	2,285	14,950	4,070	85	84	50
	361MKQS	TBD	96"	TBD	TBD	103"	TBD	TBD	TBD	TBD	87	87	50
	365BHS	40'	96"	160"	160"	103"	11,790	2,470	15,800	4,010	87	86	87
375BHLT	41' 3"	96"	160"	160"	103"	11,920	2,295	15,800	3,880	85	84	87	

INTERIOR DÉCOR CHOICES

AMBER



BROWNSTONE



EMERALD



WOOD



FOR A COMPLETE LIST OF STANDARDS AND OPTIONS, SCAN HERE WITH YOUR SMARTPHONE OR VISIT JAYCO.COM.

# A TRADITION OF LIVEABILITY

**THE JAYCO STORY BEGAN IN 1968** when Jayco founder Lloyd Bontrager created an innovative, easy-to-use lifter system that led to a better fold-down camper. Loaded with more comforts and conveniences, Lloyd believed his camper would bring people closer together because it was more liveable. A devoted family man, Lloyd's passion extended to his business as well. In fact, our company's success stems from his insistence on treating everyone at Jayco as family — from our factory to our front office, our salespeople to our suppliers, and our customers to our community.

**BLENDING OLD WORLD AMISH CRAFTSMANSHIP WITH INNOVATIVE TECHNOLOGY**, Jayco is the nation's largest family-owned and operated RV manufacturer today. And while our product line has grown considerably over the years, every unit we build is still guided by Lloyd's vision and a humble desire to help make it easier for families to explore together and relax together. It's what separates us from other RV manufacturers. And it's what continues to make Jayco America's Most Liveable RVs.



AMERICA'S MOST **LIVEABLE** RVs.



Jayco proudly sponsors Tread Lightly!, a nonprofit organization whose mission is to empower generations to enjoy the outdoors responsibly through education and restoration.

**Unloaded Vehicle Weight (UVW):** Sometimes referred to as "Dry Weight," UVW means the typical weight of this trailer as built at the factory. The UVW, as used in product literature and other promotional materials, does not include cargo, fresh water, propane, options or dealer-installed accessories.

**Gross Vehicle Weight Rating (GVWR):** GVWR means the maximum permissible weight of the trailer, including the UVW plus passengers, personal items, all cargo, fluids, options, and dealer-installed accessories. The GVWR is equal to or greater than the sum of the UVW and the CCC.



From RV insurance to extended warranties, JayPlus has it covered. Ask your Jayco dealer about our exclusive JayPlus program today.

**Cargo Carrying Capacity (CCC):** CCC means the maximum weight of all passengers, personal items, food, fresh water, propane, tools, other cargo and dealer-installed accessories that can be carried by the trailer. CCC is equal to or less than GVWR minus UVW. The addition of options will decrease the CCC.

**Hitch Weight (HW):** The hitch weight, as used in product literature and other promotional materials, does not include cargo, fresh water, propane gas, options or dealer-installed accessories. The addition of these types of items will either add to or subtract from the stated hitch weight.



As a Jayco owner, you can be part of the Jayco Jafari International Travel Club. Ask your dealer about the Jafari "flight" in your area, write Jayco or visit our website.

It is important for your safety and enjoyment that your tow vehicle be adequately sized and equipped to tow and handle the GVWR of the RV you select. Review weights and rating of your tow vehicle and consult a competent advisor for questions or advice. Whether you are new to RVing or a veteran, get a feel for the performance of your tow vehicle before heading out on the roadways. When you tow an RV, you must drive differently than when you drive a single vehicle. Practice hooking up, driving, backing up and braking in a safe environment or seek out professional instruction. Jayco affixes a weight label to each RV which lists weight information for that vehicle. See specifications chart inside.

Jayco, Inc., P.O. Box 460, Middlebury, IN 46540, [www.jayco.com](http://www.jayco.com) 

See dealer for further information and prices. All information in this brochure is the latest available at the time of publication approval. Jayco reserves the right to make changes and to discontinue models without notice or obligation. Photos in this brochure may show optional equipment and props for photography purposes. RVs built for sale in Canada may differ to conform to Canadian codes. ©2011 Jayco, Inc. 12-EAGL-PL 0911-30K Printed in U.S.A.