



Diplomat® | 2012



Our deluxe RVs are appointed with all of the comforts and amenities you deserve. Why buy a vacation home in one location, when this luxury coach lets you experience so much more? With stainless steel kitchens, rich hardwood accents, tile floors, state-of-the-art entertainment systems, deluxe bathrooms, available with multiple slideouts and more, your Monaco RV is a deluxe residence on wheels. You've earned the right not to sacrifice comfort. That's why Monaco Coach lets you hit the open road in style. So go ahead. Indulge yourself in a Monaco Coach.

Welcome Home.





Multiple floorplan options and generous slide-outs allow you to choose a Diplomat with ample living space in a configuration that's perfect for your unique lifestyle.

EXTERIOR FEATURES

- A** Deluxe full-body paint

B Tag axle with anti-lock brake system

C Peaked one-piece fiberglass roof
- D** Radial tires: 295/80R/22.5

E All-in-one key for entry door, bay compartment doors and ignition

F Forward-mounted back-up cameras
- G** LED clearance and side-marker lights

H One-piece windshield and protective film front mask

I Distinctive new front and rear cap design unique to Monaco brand



Enjoy Diplomat's exquisite and comfortable dining area, where you'll appreciate the roominess of a free-standing dinette with two chairs (and two folding chairs) standard on all floorplans, or an optional booth dinette ensemble

(pictured), free-standing dinette with computer workstation, or U-shaped dinette. (Pictured: 43DFT)



Cook up a masterpiece in a kitchen featuring high-end appliances, hardwood cabinetry, solid surface countertops, a decorative tile and glass backsplash, and a pull-out countertop extension with drawers. *(Pictured: 43DFT)*



The comfortable cockpit boasts UltraLeather™ six-way power pilot and copilot seats, in-dash driver message center, 3-camera color rear vision system and available GPS and Sirius Satellite Radio. *(Pictured: 43DFT)*



Luxurious décor and fabric styles, along with a standard queen bed (king available), a 32-inch LCD TV and optional DVD player make Diplomat's master bedroom the perfect place to retire at the end of an eventful day. (Pictured: 43DFT)



In the Diplomat's bathroom, you'll find gorgeous porcelain tile flooring, a Corian® countertop with integrated bowl and decorative backsplash, and a roomy one-piece shower. (Pictured: 43DFT bath-in-a-half layout with full private bath beyond bedroom)



Make yourself at home with a variety of dinette, recliner and sofa options, as well as amenities like a 42-inch LCD flatscreen TV, home theater system with iPod® docking station, and an optional in-motion satellite system. (Pictured: 43DFT)



ITALIAN SIENNA

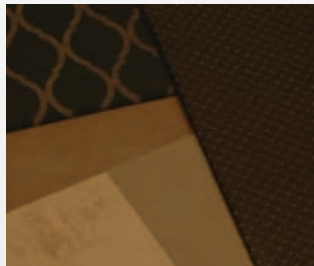


GLAZED ITALIAN SIENNA

CENTRAL PARK



MANHATTAN BRONZE



A. BEDSPREAD B. SOFA C. ACCENT D. TILE

Note: Colors depicted are a reasonable representation though they may not be an exact match of the actual colors due to variances in processing and production.



CENTRAL PARK



MANHATTAN BRONZE



GREYSTONE



CRYSTAL SUNSET

AROUND THE CLOCK SERVICE AND SUPPORT

When you take delivery of your new recreational vehicle, it's just the beginning of our exclusive around-the-clock Owner Advantage Program.

We offer an extensive support program that provides complete roadside assistance and special motor club benefits that follow you wherever your travels take you. We've teamed up with

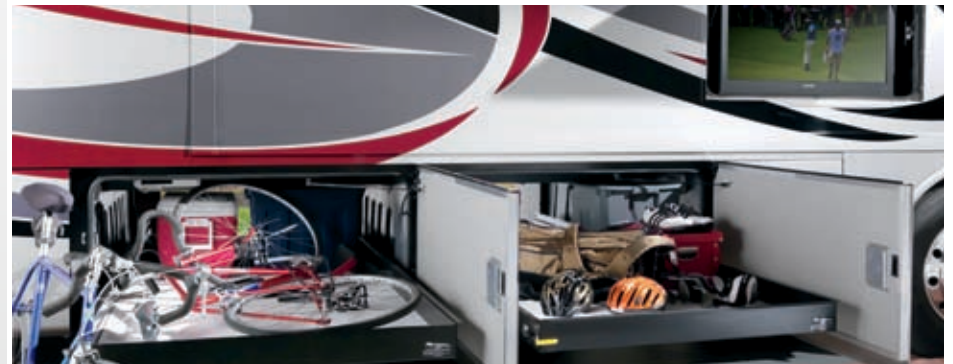
the largest RV emergency road service company in the country to give you immediate access to fast, dependable service when and where you need it. Add our toll-free service appointment assistance, plus a technical assistance hotline, and you have the security of full-time support at your fingertips.

For details, call toll-free 877-211-8135

WARRANTIES

Enjoy your next RV adventure with the peace of mind that comes with a 12 month/24,000 mile basic limited warranty; a 5 year/50,000 mile limited warranty on aluminum or steel frame

structure; and a 3 year/50,000 mile limited warranty on the Roadmaster Chassis. Review your coach's limited warranty in full for complete terms and conditions.



MAKE IT HOME.

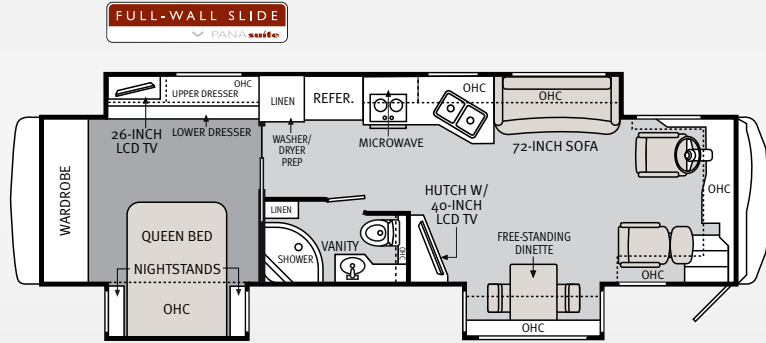
Choose from a stunning selection of décor and cabinetry styles and combinations, designed to surround you in comfort and luxury.

MORE TO STORE.

The Diplomat features large, pass-through storage bays with side-hinged baggage doors, along with an optional exterior entertainment center with 42-inch LCD TV and DVD player (40PDQ, 43DFT).

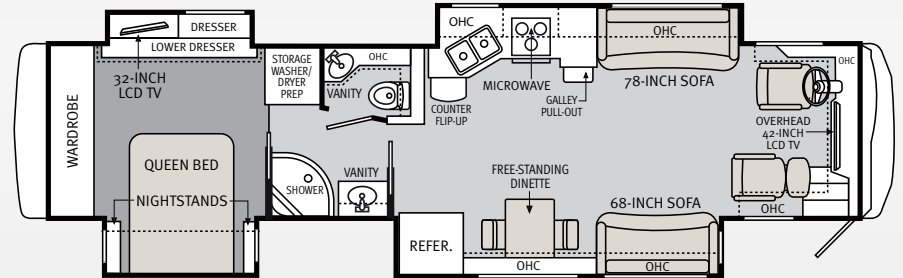
A D E H I

36PFT



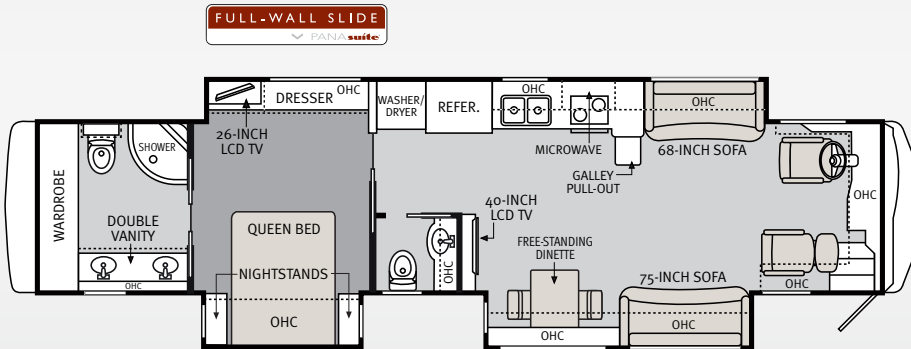
A D G H I

40PDQ



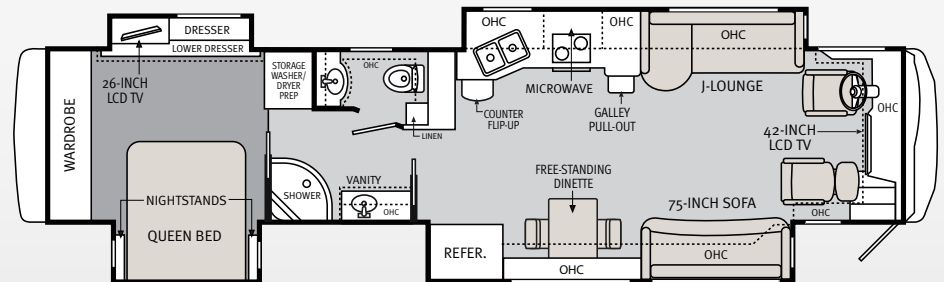
A B C D F H I

43DFT



A B C D G H I

43PDQ



FURNITURE OPTIONS:

HIDE-A-BED SOFA (ROADSIDE)



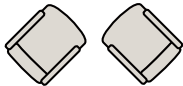
A

HIDE-A-BED SOFA (CURBSIDE)



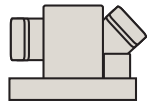
B

TWO EURO-RECLINERS WITHOUT TABLE



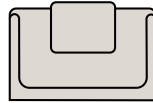
C

FREE-STANDING DINETTE WITH WORKSTATION



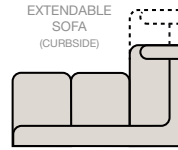
D

U-SHAPED BOOTH DINETTE



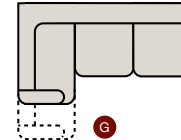
E

EXTENDABLE SOFA (CURBSIDE)



F

EXTENDABLE SOFA (ROADSIDE)



G

BOOTH DINETTE ENSEMBLE



H

KING BED



I

MAXXFORCE® POWER

The MaxxForce® 10 is built on the same proven I-6 platform as Navistar's legendary and industry-leading DT engine. This I-6 design grew from a big idea: bring to the mid-range diesel market traditional big bore features like wet-sleeve design and in-chassis rebuild capability. This model, which brings increased 9.3-liter displacement by longer stroke, meets the requirements of more demanding applications.

The high-output MaxxForce 10 offers these features plus the performance you would expect from larger heavy-duty engines in a weight-saving medium-duty package.

MaxxForce diesel engines deliver powerful, smooth, and reliable operation without the added hassle of complicated emissions technology. All backed by the largest network of service locations.



ROOF CONSTRUCTION

(top to bottom)

- One-piece peaked fiberglass roof
- Luaun backing
- Thick, tapered bead foam insulation
- Aluminum double I-beam superstructure filled with fiberglass insulation
- Vapor barrier
- Structure foam: thermal insulative barrier
- 1/2" bead foam insulation
- Foam padding for extra insulation
- Padded vinyl ceiling



SIDEWALL CONSTRUCTION

(left to right)

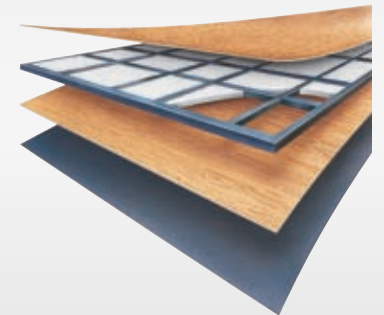
- Wallpaper
- Décor board
- 1-1/2" x 1-1/2" square tubular aluminum frame
- High performance thermal insulation
- Gel coat fiberglass composite sidewall

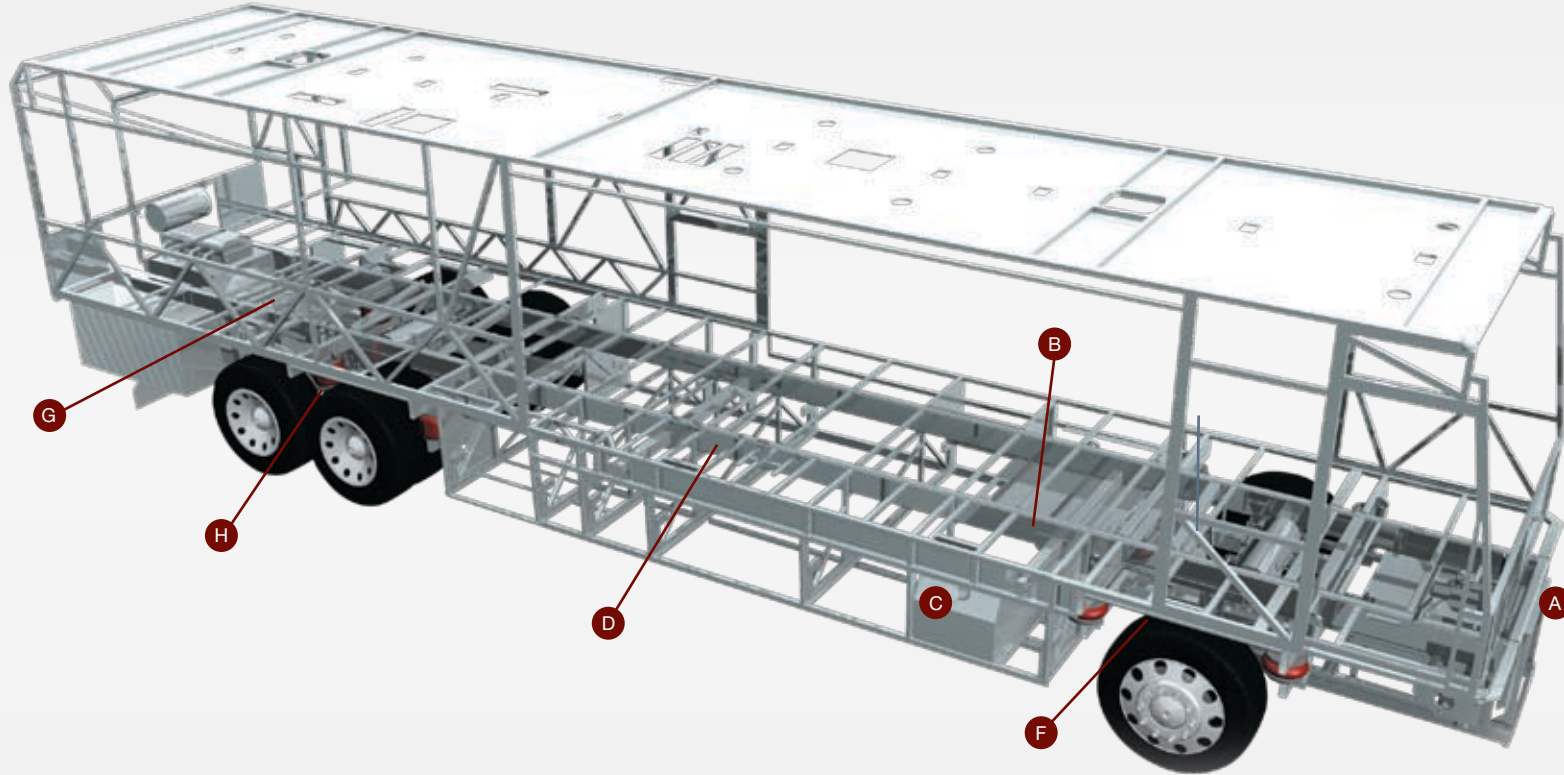


FLOOR CONSTRUCTION

(top to bottom)

- Structurwood™
- 1-1/2" tube
- High-performance thermal insulation foam
- Luaun
- 3-ply backer





ROADMASTER RR8R AND RR10R RAISED RAIL CHASSIS

The 2012 Diplomat rides exclusively on the Roadmaster Chassis, custom-built to deliver the very best diesel motorhome experience possible.

FEATURES

- A** Steel firewall
- B** Raised-rail design
- C** Dual fuel fill
- D** Steel truss system
- E** 10,000 pound tow hitch
- F** Automatic Traction Control (ATC) and Anti-Lock Braking System (ABS)
- G** Allison® 3000 MH 6-speed transmission
- H** Cushion Air Glide Suspension with 8 outboard-mounted airbags and 8 shock absorbers (36PFT, 40PDQ), and 10 air bags (8 outboard-mounted) and 10 shock absorbers (43DFT, 43PDQ)

[Roadmaster RR8R: 36PFT, 40PDQ; Roadmaster RR10R with Tag Axle: 43DFT, 43PDQ]

WEIGHTS

	36PFT	40PDQ	43DFT	43PDQ
Gross Vehicle Weight Rating (Lbs.)	36,000	36,000	43,000	43,000
Gross Combined Weight Rating ¹ (Lbs.)	46,000	46,000	53,000	53,000
Front Gross Axle Weight Rating (Lbs.)	13,000	13,000	13,000	13,000
Rear Gross Axle Weight Rating (Lbs.)	23,000	23,000	20,000	20,000
Tag Axle Weight Rating (Lbs.)	N/A	N/A	10,000	10,000

MEASUREMENTS

	36PFT	40PDQ	43DFT	43PDQ
Wheelbase	213"	261"	273"	273"
Overall Length	37' 4"	41' 4"	44' 3"	44' 3"
Overall Height with AC	12' 7"	12' 7"	12' 7"	12' 7"
Exterior Width	8' 4"	8' 4"	8' 4"	8' 4"
Interior Height	7' 0"	7' 0"	7' 0"	7' 0"

TANK CAPACITIES²

	36PFT	40PDQ	43DFT	43PDQ
Gray Tank (Gal.)	62	62	62	62
Black Tank (Gal.)	40	40	40	40
Fresh Tank (Gal.)	100	100	100	100
Fuel Tank (Gal.)	100	100	100	100
LP Tank ³ (Gal.)	39	39	39	39

Due to continuous product improvements, please visit us online at monacocoach.com for the latest in standards, options, specifications and technical data.

¹ Towing capacity is limited by GCWR; your vehicle's towing capacity is the difference between the GCWR and the actual vehicle weight, including all water, fuel, passengers and cargo. Your towed vehicle should be equipped with auxiliary brakes if the weight of the towed vehicle exceeds 1,000 lbs. consult your owner's manual for further towing information.

² All tank capacities are estimated based upon calculations provided by the tank manufacturers and represent approximate capacities. The actual "usable capacity" may be greater or less than the estimated capacities based upon fabrication and installation of the tanks.

³ Actual filled LP capacity is 80% of listing due to safety shut-off required on tank.

The actual overall length of the recreational vehicle may differ from that indicated in the brochure due to variances in the manufacturing process and/or installed components. The actual length may be greater or less than that indicated. Due to the large variety of options and floorplan arrangements available to our customers, actual weights for each unit can differ significantly. Monaco provides a weight sticker on each unit we produce which includes that unit's tank capacities and approximate weight. Consult your local Monaco dealer for unit availability and further information. The information printed in this brochure reflects product design, fabrication, and component parts at the date of printing. The manufacturer reserves the right, at any time, to make changes in product design or material or component specifications as its sole option, without notice. This includes the substitution of

components of a different brand or trade name which will result in comparable performance. All information printed in this brochure is subject to change after the date of printing. Some features shown or mentioned in this brochure are optional and may only be available in selected floorplans. Photographs may depict a floorplan option that has been discontinued or is no longer available at the time of your purchase. Photographs may show props or decorations that are not standard equipment. Monaco, the Monaco logo and its design, are registered trademarks. Other products and company names are trademarks and/or registered trademarks of their respective holders. While the color of the motorhome's exterior and the interior fabrics depicted in this sales brochure are fair and reasonable depictions, the colors depicted may not be an exact match of the actual colors because of the variances in

photo-processing and printing. Due to product improvements, changes during the model year and/or transcription errors that may occur, information represented within this brochure may not be accurate at the time of your purchase. If certain information is significant to your purchasing decision, please confirm the information with your dealer. Component part and appliance manufacturers issue limited warranties covering portions of the recreational vehicle not covered under the Limited Warranties issued by Monaco RV, LLC. To learn specific details regarding warranty coverage, please contact your selling dealership or review the warranty packet inside the recreational vehicle.

BODY CONSTRUCTION

- › Laminated Sidewall Construction
- › Peaked One Piece Roof
- › 3" Roof Rafters I-Beam Construction
- › One Piece Front Windshield
- › Smooth Fiberglass Exterior Walls
- › Molded Fiberglass Front Cap with Chrome Sergeant Stripes
- › Fog Lights with Chrome Bezels
- › Molded Fiberglass Rear Cap with Integrated Radiator Grille and Air Intake
- › Chrome Dual Head Power Controlled Heated Exterior Mirrors with Turn Indicator Lights
- › Side Hinge Access Doors for Engine Fluid Service on Rear Cap
- › Pull-Out Generator Tray with One-Piece Door
- › Side Hinge Baggage Doors
- › Insulated Fiberglass Engine Cover with Easy Open Access Doors
- › Electric Flush Floor Step Well Cover
- › Pass-Through Storage Bay Slide-Out Tray
- › Interior Rubber Entry Step with Step Well Storage Bucket
- › Side Hinge Baggage Doors
- › One-Piece Polyethylene Pass-through Storage Compartment
- › Full Length Mud Flap
- › Protective Film Front Mask
- › Deluxe Full Body Paint
- › Undercoating

CHASSIS / ENGINE / SUSPENSION

- › Roadmaster Raised Rail RR8R-Series Chassis (N/A 43DFT, 43PDQ)
- › Cushion Air Glide Suspension with 8 Outboard Mounted Air Bags and 8 Shock Absorbers (N/A 43DFT, 43PDQ)
- › Roadmaster Raised Rail Chassis RR10R (N/A 36PFT, 40PDQ)
- › Tag Axle with Anti-Lock Braking System (N/A 36PFT, 40PDQ)
- › Cushion Air Glide Suspension with 10 Outboard Mounted Air Bags and 10 Shock Absorbers (N/A 36PFT, 40 PDQ)
- › MaxxForte® 10-405HP EPA 2010 Engine with Allison 3000 MH 6-Speed World Transmission and Electronic Shifter
- › Torque: 1250 lbs/ft.
- › Engine Displacement: 9.3L/570 cu. in.
- › 3 Position Diamond Logic® Engine Compression Brake by Jacobs®
- › Aluminum Rear Mount Radiator with CAC Cooler
- › Dual Fuel Fill
- › 160 Amp Alternator
- › Rear Axle Ratio: 4.30:1
- › Tires: 295/80R/22.5
- › Prewire for Supplemental Braking System
- › Polished Aluminum Wheels
- › Anti-Lock Braking System with Full Air Brakes
- › Automatic Traction Control
- › Automatic Air Leveling System
- › 10,000 lb. Hitch Receiver with Dual Connector 4-Pin or 7-Pin
- › Automatic Hydraulic Leveling System

COCKPIT

- › Automotive Dash with Oxford Burl Instrumentation Panel
- › Ergonomic Drivers Control Module with Improved Steering Shaft
- › One Key Fits All; Ignition, Entry Door and Baggage Doors
- › In-Dash Message Center
- › In-Dash 7" LCD Touch Screen AM/FM/CD Stereo Radio with Sirius Ready Compatibility, Auxiliary in Connectivity, SD Card Slot, USB Port and Weather Band; Back-Up Camera Monitor System with DVD Player; iPod® and Bluetooth Hands-Free
- › Power Windshield & Manual Driver/ Passenger Solar Screens with Black-Out Shades
- › Lighted VIP Smartwheel Multiplexed Steering Wheel with Controls for ICC, Radio, Cruise Control and Engine Brake
- › Intermittent Windshield Wipers
- › Molded Pilot-Side Console with Cup Holder
- › CB Radio Prep
- › Ultra Leather Six-Way Power Pilot Seat and Co-Pilot Seat with Powered Footrest
- › Color Coordinated Carpeted Floor Mats
- › GPS Garmin Navigation System with Dock Station
- › Sirius Radio Satellite Tuner with Antenna

STANDARD OPTIONS

APPLIANCES / ACCESSORIES

- › Stainless Steel Residential Refrigerator
- › 2-Burner Cooktop
- › Removable Solid Surface Range Covers
- › Stainless Steel Convection Microwave
- › 42" Flat Screen LCD TV in Living Area
- › 32" Flat Screen LCD TV in Bedroom

- › Home Theater with iPod® Docking Station
- › Curbside; Exterior Patio Hook-Ups for Cable, 120V Outlet with Hatch Door to Exterior
- › Digital Satellite System Prep
- › Interior Cable TV Hook-Up and Phone Jacks
- › Ext. Gas Line Hook-Up for LP Accessories
- › Washer/Dryer Prep

- › Norcold 12 cu. ft. 2-Way 4-Door Refrigerator with Ice Maker
- › Central Vacuum with Toe Kick Inlet
- › Stackable Washer and Dryer
- › 32" Flat Screen LCD TV in Cockpit
- › Blu-Ray Disc Home Theater System
- › Bedroom DVD player
- › R5 KVH In-Motion Satellite R5 HD TV for

- › Dish Network Only (N/A Canada)
- › Multi-Satellite HD KU/KA Dish (DirecTV Winegard Stationary Operation Only) (N/A Canada)
- › Exterior Entertainment Center 42" Flat Screen LCD TV with DVD player (N/A 36PFT, 43DFT)

INTERIOR

- › Hardwood Cabinetry: Italian Sienna
- › Built-In Soffit with Integrated Lighting in Vanity Overheads
- › Corian® Countertops
- › Decorative Backsplashes
- › Porcelain Tile

- › Designer Carpeting in Bedroom
- › Stainless Steel Kitchen Sink w/ Corian Covers
- › Pull-Out Countertop Extension with Drawers (N/A 36PFT, 43PDQ)
- › Countertop Integrated Sinks in Bathrooms
- › Ceiling Treatment in Living Room
- › Manual Solar Screens with Blackouts Throughout

- › Decorative Wall Art in Living Area and Bedroom
- › Soil Repellent Protection on Fabric

- › Wood Choice: Glazed Italian Sienna

- › Décors: Manhattan Bronze, Central Park
- › Non-Polished Porcelain Tile
- › Pull-Out Trash Can

FURNITURE

- › Queen Bed with Overhead Cabinet and Nightstands
- › Roadside; UltraLeather J-Lounge Sofa
- › Curbside Furniture; UltraLeather Jackknife Sofa (N/A 36PFT)
- › Freestanding Dinette with 2 Freestanding

- › Chairs and 2 Folding Chairs
- › Queen Bed with Corian® Nightstands

- › King Bed
- › Queen Bed; Premier Select Comfort Air Mattress
- › King Bed; Prem. Select Comfort Air Mattress

- › Roadside; UltraLeather Hide-A-Bed w/ Air Mattress
- › Roadside; UltraLeather Extendable Sofa (N/A 36PFT, 43DFT)
- › Free-Standing Dinette/Computer Workstation
- › Curbside; UltraLeather Booth Dinette Ensemble (36PFT)
- › Curbside; UltraLeather U-Shaped Dinette

- (36PFT)
- › Curbside; UltraLeather Booth Dinette Ensemble w/ Hide-A-Bed (N/A 36 PFT)
- › Curbside; UltraLeather Ext. Sofa (43DFT)
- › Curbside; 2 Leather Euro-Recliners without Table (43DFT)
- › Curbside; UltraLeather Hide-A-Bed (N/A 36PFT)

ELECTRICAL SYSTEMS & LIGHTS

- › 50 Amp 12V Distribution Panel and Power Cord with Reel
- › Power Cord Reel
- › Power Control System
- › Onan® 8.0 kW Quiet Diesel Generator on Manual Slide-Out Tray (N/A 43DFT, 43PDQ)

- › Onan 10 kW Quiet Diesel Generator on Manual Slide-Out Tray (N/A 36PFT, 40PDQ)
- › Auto Generator Start
- › 4 High Capacity 6V Deep Cycle Batteries
- › 2 12V Heavy Duty Chassis Batteries
- › Battery Disconnect Switch at Front Door
- › Battery Boost Switch in Cockpit
- › 2,800 Watt Pure Sine Wave Inverter
- › Porch Light

- › Light Interior Steps
- › Lights in Outside Storage Compartments with Switch on Passenger Console
- › 120V Outlet in Outside Storage Compartment
- › Roadside; Exterior Hook-Ups for DSS Dish, Phone and Cable
- › Under Hood Utility Light
- › Convenience Center in Hallway
- › Decorative Lighting

- › Pre-Wire for Solar Panel

- › Solar Panel with Controller and Display
- › LED Lighting Throughout

STANDARD OPTIONS

PLUMBING & LP SYSTEMS

- › One-Piece Round Shower
- › Single Lever Kitchen Faucet w/ Pull-Out Sprayer
- › Stainless Steel Under-Mount Kitchen Sink
- › Central Water Filtration System
- › Demand Water System and Water Pump
- › RV Sani-Con Tank Drainage System
- › Water Hose Reel
- › Exterior Tank Monitor Gauge in Wet Bay
- › Water Heater By-Pass Valve
- › Water Pump Switch at Kitchen Galley, Bathrooms and Service Bay Area
- › Hot/Cold Shower in Wet Bay
- › Holding Tank Rinsing System
- › Gravity and Pressurized Water Fill
- › Sewer Hose Assembly with Storage
- › Brushed Nickel Faucets and Fixtures
- › Heating, Vents and Air Conditioning Standard

HEATING, VENTS & AC

- › Dual 15 BTU Roof ACs with Ducted Air, Heat Pumps and Digital Thermostat Control
- › Three 15 BTU Roof ACs with Ducted Air, Heat Pumps and Digital Thermostat Control RVP (N/A 36PFT, 40PDQ)
- › Aqua-Hot 400 Water and Heating System
- › Electronic Dash AC/Heat Climate Control
- › Kitchen Powered 12V Attic Fan with Wall Control of Auto Dome and Fan Power
- › Ceiling Fan in Bedroom
- › Bath Powered 12V Attic Fan with Wall Control of Auto Dome and Fan Power
- › 12V Heater in Wet Bay
- › Three 15M BTU Air Conditioner with Heat Pumps and Ducted Air (Requires 10 kW Generator) (40PDQ)
- › Electric Fireplace without Remote (N/A 40PDQ, 43PDQ)

WINDOWS, DOORS & AWNINGS

- › Radius Flush Mount Dual Pane Safety Glass Tinted Windows
- › Front Entry Door with Removable Screen and Anti-Skid Steps
- › Keyless Entry (Key Fob)
- › 12V Electric Front Door Awning
- › Topper Slide-Out Awnings Living Area and Bedroom
- › 12V Electric Patio Awning
- › Tinted Skylight in Bathroom with Protecta Glaze
- › Window Awnings On All Slide-Out House Windows Except Kitchen, Private Bath, and Slide-Out Windows Under Patio Awning

SAFETY

- › Fire Extinguisher
- › Deadbolt Lock on Entrance Door
- › 120V GFI Protected Circuit
- › LP Gas Detector
- › Smoke Detector
- › Carbon Monoxide Detector
- › Driver and Passenger Three-Point Seat Belts
- › Third Brake Safety Light
- › Egress Windows

STANDARD OPTIONS



REVOLUTIONIZING THE RV

Monaco® RV is driven by the same sense of possibilities that makes RV travelers ask, Where To Next?™ That's why we've embarked on a new journey with Navistar® as our partner. With access to Navistar's 175 years of transportation expertise, we've got big

ideas on the drawing board and innovative new RVs rolling off the line. Monaco RV has shaped itself into a leader in the RV industry. In the spirit of pursuing what's next, we'll never stop looking for the next great innovation.