

# BROOKSTONE

BY COACHMEN



*Ruby* 

*Diamond* 



 **Coachmen**  
Life should be so easy.

# BROOKSTONE

*Ruby*  *Diamond* 





## L U X U R Y

Coachmen has thrown the rules out the window when it comes to the Brookstone luxury fifth wheel. With industry exclusive features such as 40" living area TV's, 6'7" slide outs, swivel rocker recliners, solid hickory cabinet doors and stiles, and laminated floor construction, the Brookstone stands up to even the most discriminating buyers standards. And that is just the living area! The 295RL (shown here) gives you all that in a smaller lighter package for ultimate towability!







295RL

Espresso Interior







295RL

Espresso Interior



Our bedrooms are the most livable in the industry. With features such as an ultra deep 31" bedroom slide and exclusive angled front wardrobe you will have plenty of room to walk in front of and around to actually make the bed! Night stands and outlets on each side of the bed slide add to convenience. Our front wardrobes come standard with washer dryer prep and can fit a stackable washer and dryer! No more having to rely on the inefficient combination units. Also we have the industry's largest bedroom TV at 32", you wont find that on the competition!





The Brookstone kitchen was built to cater to the extended stay camper. With features such as custom hickory cabinet doors and stiles, DuPont Corian countertops, and pull out pantries you will be overwhelmed with all the space! We didn't stop where the competition did. We added a convection microwave oven, a remote controlled Create A Breeze fan, wine rack with goblet holder, and central vacuum all standard. We finished off the kitchen with extra wide drawers to hold all your utensils, full extension ball bearing drawer guides, and a slide out pantry with a butcher block on top.



367RL

Saddlebrook  
Interior

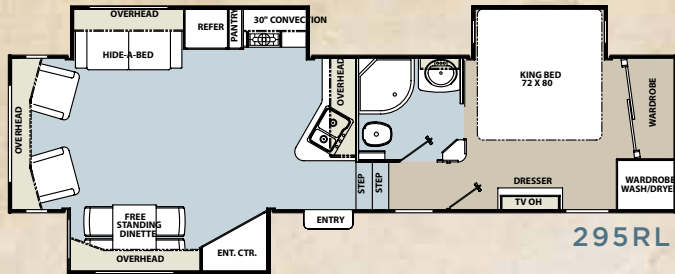


Shown left is the kitchen of the 367RL with the optional 12 cubic foot 4 door refrigerator. Dare to compare the storage in the Brookstone to anyone else in the industry! The competition boast 25 doors and drawers in their kitchen, compare that to 35 in a Brookstone depending on your floor plan and options! You can also see the residential pull out spray faucet and one of the industry's largest sinks.

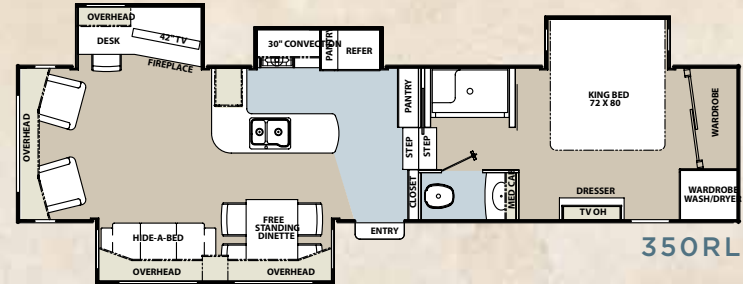


# BROOKSTONE

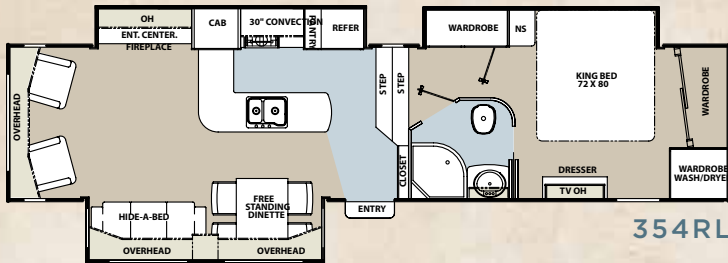
*Brookstone*  
Diamond



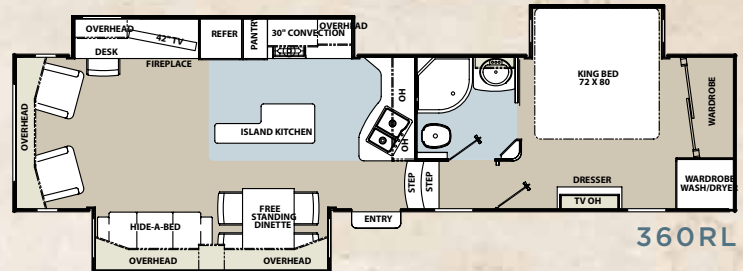
295RL



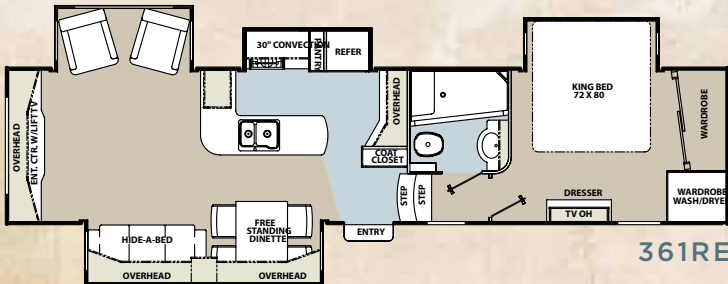
350RL



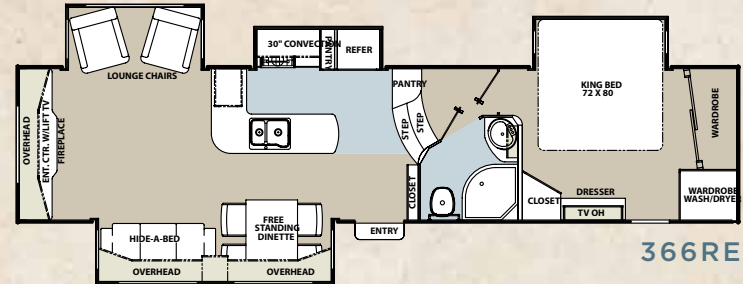
354RL



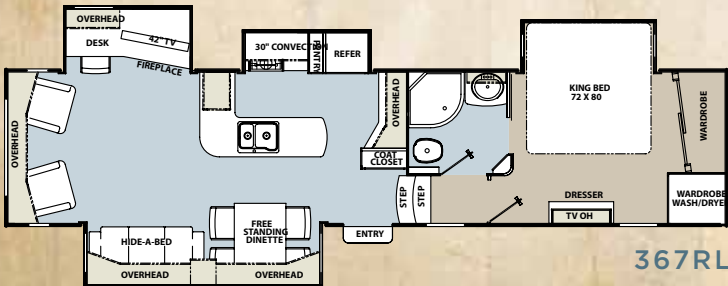
360RL



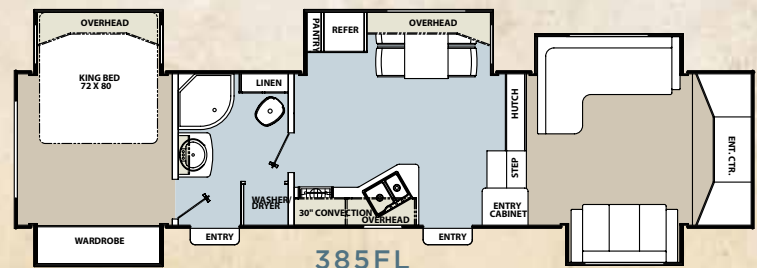
361RE



366RE



367RL



385FL



# BROOKSTONE SPECIFICATIONS



## COACHMEN CONVENIENCE PACKAGE – STANDARD

- Solar reflective windows
- Glass shower door
- Day/night shades
- Wire and frame for 2nd A/C
- 72" Hide a Bed Sofa
- Hardwood cabinet stiles
- Free Standing dinette
- Black tank flush
- Ceiling fan
- Central Vacuum System
- Cedar lined closet
- Water filter
- Poured gel coat fiberglass sidewalls
- One piece, round front, fiberglass shower

## LUXURY PACKAGE – STANDRD

- Independent front jacks with dual motors
- Rear power jacks
- Power awning
- DVD/CD with 5.1 surround sound
- Beauflor flooring
- 30" convection oven
- 15k BTU A/C
- Comfort air fan in kitchen
- 12v Battery disconnect
- 40" LCD TV in Living Area
- 32" LCD TV in Bedroom
- 19" LCD Exterior TV
- Storm Door Screen Door
- Bus style slam latch baggage doors

## POPULAR OPTIONS

- Trail air hitch
- Dual pane safety glass windows
- Slide out awning package
- Solar panel prep
- Hitch cover
- High back desk chair
- Electric fireplace
- King bed
- Leather recliners
- Leather sofa
- Wireless rear back up camera
- Low profile, ducted 2nd 13.5k BTU A/C
- 2nd Comfort air fan
- Generator Ready (includes 40LBS LP bottles)
- Onan Marquis Gold 5.5 LP Generator
- 12v holding tank heat pads
- 12' cu ft. refrigerator
- Level up 6 point auto level system
- Arctic eskimo package
- Roadside assistance
- CSA Upfit

Floorplan	295RL	350RL	354RL	360RL	361RE	366RE	367RL	385FL
Length	35'	38'6"	38'6"	38'6"	TBA	38'6"	38'6"	39'6"
UVW	11000	12,250	12,450	12,180	TBA	11,783	12,150	12,150
Hitch Weight	2310	2,450	2,650	2,490	TBA	2,590	2,560	2,650
GVWR	14500	15,500	15,500	15,500	TBA	15,500	15,500	15,300
Fresh Water	77	77	77	77	TBA	77	77	77
Gray Water	90	90	90	90	TBA	90	90	90
Black Water	45	45	45	45	TBA	45	45	45

*Diamond* 

## DIAMOND EDITION PACKAGE

*(can be added to any Brookstone floorplan)*

- Exclusive Full Body Paint Package
- Level Up Auto Level System
- 12 cu ft. Refrigerator with ice maker
- 40 LBS LP Bottles
- Flush mount, frameless solar reflective windows





## THE RUBY EDITION

The Brookstone Ruby edition is for the family that wants it all, but doesn't want to pay for it. Ruby edition's focus is on smaller, lighter floor plans and bunk houses all for the cost conscious budget. But we still kept all your favorite Brookstone features such as solar reflective windows, hardwood hickory cabinets and stiles, DuPont Corian countertops, and 165 cu ft. of pass thru storage, to make your camping as enjoyable as possible.







Shown here is the kitchen and living area of the 290LS. Features such as hardwood hickory cabinet doors and stiles, residential 30" microwave, DuPont Corian Counter tops, Beauflor flooring, swivel rocker recliners, hardwood table and chairs with storage and a 32" Living area TV make Ruby best in its class.

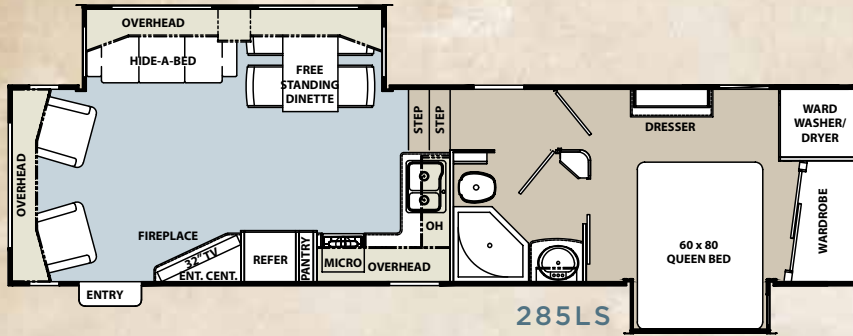


**290LS**  
Champagne  
Interior

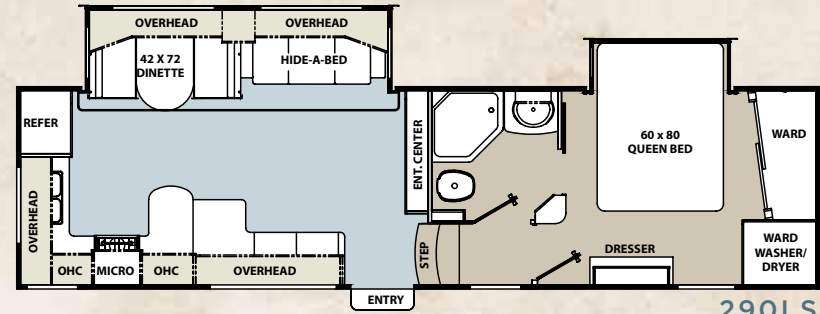


# BROOKSTONE

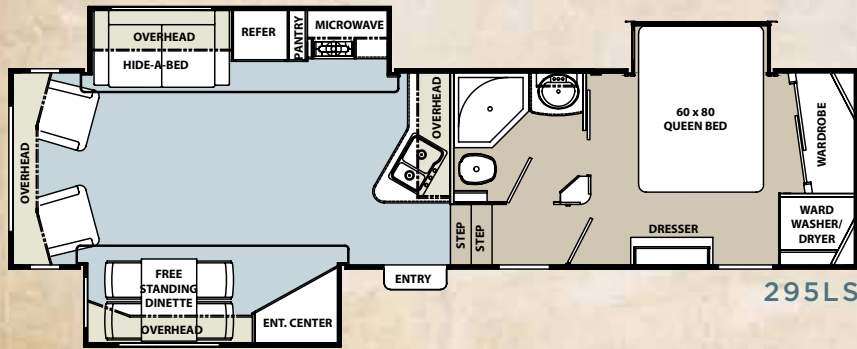
## Ruby



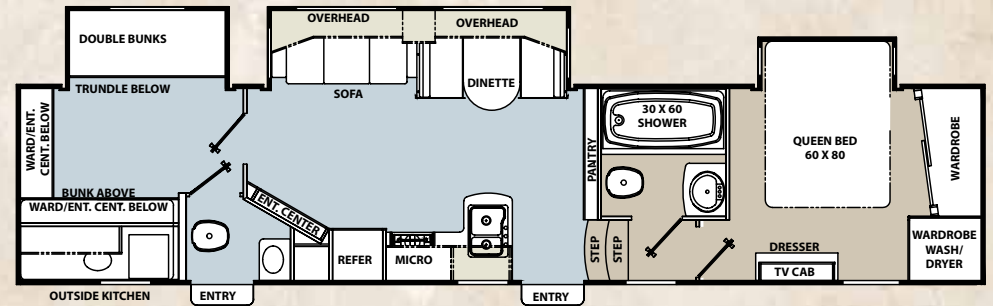
285LS



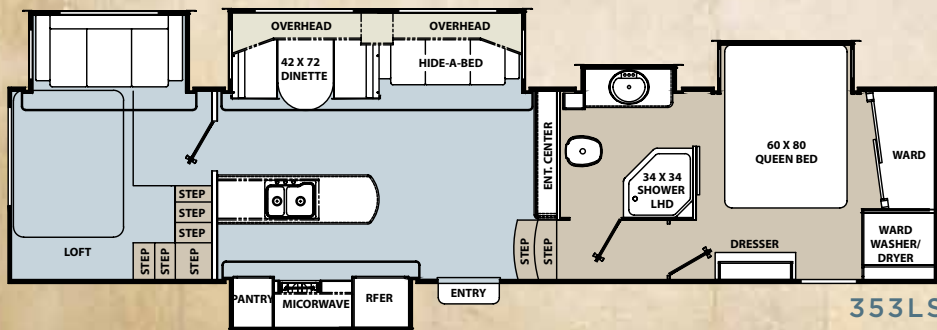
290LS



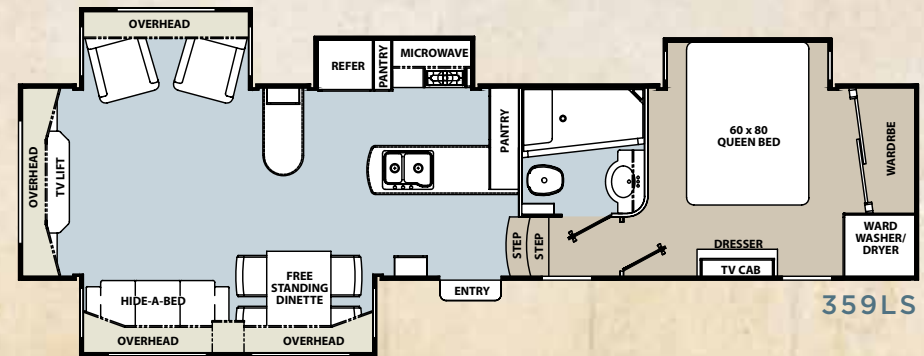
295LS



340LS



353LS



359LS



# BROOKSTONE RUBY SPECIFICATIONS



## COACHMEN CONVENIENCE PACKAGE STANDARD

- Solar Reflective windows with mirror finish
- Glass Shower door
- Day/Night shades
- 50 AMP service
- 10 gal. DSI water heater
- Deluxe porcelain toilet
- Extra - Large 8 cu ft. double door refrigerator
- Black tank flush
- Under mount spare tire and carrier
- Outside shower
- Washer/dryer prep
- Outside speakers
- Ceiling fan
- 22" oven with broiler
- Residential Serta Queen Mattress
- Digital TV antenna w/booster
- Exterior convenience center
- Turn Tec Front cap and chamfered frame
- Independent front jacks with dual motors
- Rear power jacks
- Power awning
- DVD/CD with 5.1 surround sound

- Beauflor flooring
- 30" microwave
- 15k BTU AC
- 32" HD LCD TV
- Slam latch baggage doors
- DuPont Corian Counter tops
- Full extension drawer glides

## POPULAR OPTIONS

- Dual pane windows
- Solar panel prep
- Booth dinette
- 32" bedroom LCD TV
- Central Vacuum
- Electric Fireplace
- 2nd 13.5k BTU A/C in bedroom
- Power vent fan
- Generator ready
- Arctic Eskimo package
- Hitch Cover
- CSA upfit
- Roadside assistance

Floorplan	285LS	290LS	295LS	340LS	353LS	359LS
Hitch Weight (lbs.)	2,050	2,100	2,150	2,450	2,500	TBA
Base Weight (lbs.)	10,200	9,900	10,700	11,500	11,700	TBA
GVWR (lbs.)	14,000	14,000	14,000	15,300	15,300	TBA
Exterior Length	33' 0"	32' 0"	34' 0"	39' 0"	39' 0"	TBA
Fresh Water	70 gal.	70 gal.	70 gal.	70 gal.	70 gal.	TBA
Gray Water	90 gal.	90 gal.	90 gal.	90 gal.	90 gal.	TBA
Black Water	45 gal.	45 gal.	45 gal.	90 gal.	45 gal.	TBA



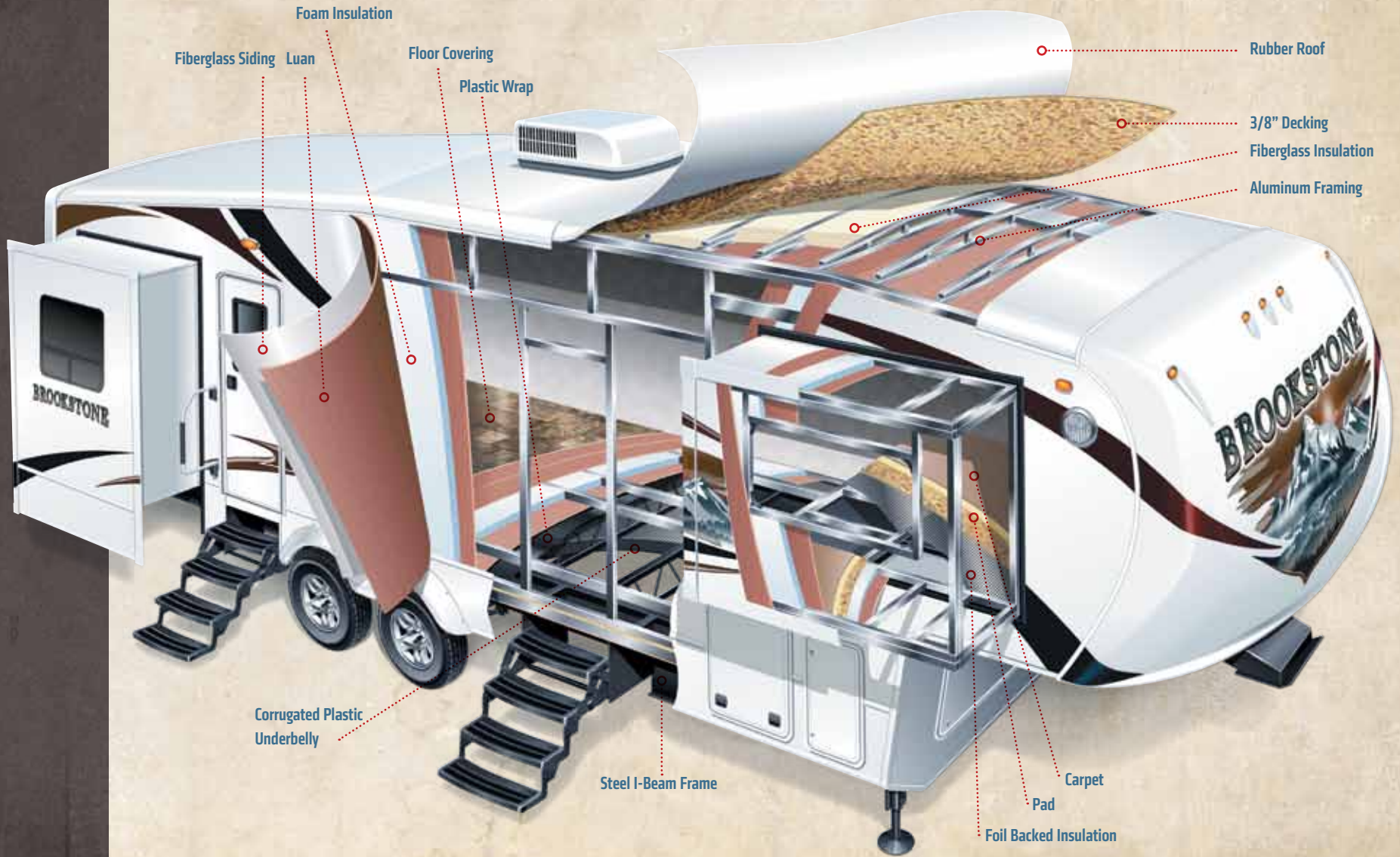
THE  
DIAMOND  
EDITION

Some people want it all. That's why Brookstone created the Diamond Edition. The Diamond Edition includes an exclusive full body paint, flush mount frameless solar reflective windows, "Level Up" 6 point automatic hydraulic leveling system, 40 lb. LP bottles, and a 12 cubic foot refrigerator with ice maker. All given to you at a bundled price that makes having it all that much easier.





# BROOKSTONE CONSTRUCTION







A



C



E



G



D



F



H



B



# BROOKSTONE

## POPULAR FEATURES



*A. Brookstone builds cabinets that last. Only selecting the finest hickory to build our cabinet doors and stiles (face frames).*



*B. Our hardwood dinette table with padded back chairs has a pull out leaf and flip up storage in not only the table but each of the chairs as well.*

*C. Brookstone has the largest pass thru storage in the industry at 165 cu ft. Compare that to the competitions 145 cu ft. Not only that but we give you a 19" TV on a swing arm to enjoy your favorite programs while enjoying the great outdoors*

*D. Brookstone only uses residential, one piece, round front fiberglass showers. The competition uses two pieces of plastic with a seam at the base that will leak over time.*

*E. Every Brookstone comes with independent electric front jacks with dual motors and dual switches. No more having to use cumbersome blocks to get level, just hit the button for the corresponding side. Two motors means it is stronger and will last longer!*

*F. Brookstone uses an exclusive one piece docking station that has no seams. With the competitions "assembled" docking station water will leak at the seams and get into your underbelly, Not with Brookstone!*

*G. Standard rear electric jacks make set up as quick as it is convenient.*

*H. Four step entry makes entering and exiting your Brookstone easy on the joints. With a lower first step and lower last step there less chance to stumble.*

*I. Our chamfered frame and wrap around front cap create Coachmen's exclusive Turn Tec design. This gives you the maximum amount of turning radius with out an expensive slider hitch.*

*J. Think windows are not important? Think again! Brookstone only uses Solar Reflective windows with a mirror finish. They block 96% of all UV rays and are more effective at reducing solar heat. This allows your coach to stay cooler in the summer, uses your air condition less and makes your coach more efficient. Also the mirror tint adds security by preventing outsiders from seeing inside your coach. Another Brookstone exclusive!*





# BROOKSTONE STANDARDS & OPTIONS

	R	B	D
<b>INTERIOR</b>			
+ 32" HD LCD TV in Living area	S	--	--
+ 40" HD LCD TV in Living area	--	S	S
+ FM/CD/DVD Player with 5.1 Surround Sound	S	S	S
+ Residential Hid a Bed Sofas	S	S	S
+ (2) Swivel, Rocker Recliners (- - 340LS, 353LS, 385FL)	S	S	S
+ Solid Hickory Hardwood Cabinet stiles (Frames)	S	S	S
+ Solid Hickory Raised Panel Cabinet Doors	S	S	S
+ Designer Inspired Slide Out Fascias	S	S	S
+ Solid Hardwood Dresser Tops	--	S	S
+ Full Extension Ball Bearing Drawer Guides	S	S	S
+ Residential Carpeting with Padding	S	S	S
+ Beauflor Flooring Throughout Kitchen and Bathroom	S	S	S
+ 6"7" Tall Living Area Slide Outs with Oversided Overhead Cabinets	S	S	S
+ Day/Night Shades (Living Area)	S	S	S
+ Oil Rubbed Bronze Hardware	S	S	S
+ End table with storage and magazine rack	--	S	S
+ Corian Topped Laptop Station (per floorplan)	--	S	S
+ Ceiling fan with tulip lighting	S	S	S
+ Systems monitor panel	S	--	--
+ Custom Brookstone Control panel	--	S	S
+ Satellite Prep	S	S	S
+ Carbon Monoxide Detector	S	S	S
+ Central Vacuum	O	S	S
+ Lighting Upgrade Package	--	S	S
+ Insulated Slide out floors	S	S	S

	R	B	D
<b>EXTERIOR</b>			
+ High Gloss automotive gel coated fiberglass exterior walls	--	S	S
+ Partial Paint Exterior	S	--	--
+ Full Body Paint Exterior	--	--	S
+ Aluminum Wheels	S	S	S
+ 165 cubic feet drop frame pass through storage area (per floorplan)	S	S	S
+ Rubberized Diamond plate no mess flooring and D-Ring Tie Downs in pass through storage	--	S	S
+ 19" HD LCD TV in pass through storage area	--	S	S
+ Extra Large entry handle	S	S	S
+ 30" wide entry door with keyless entry and Storm door screen door	--	S	S
+ Solar Reflective mirror finish windows	S	S	--
+ Flush Mount, frameless, solar reflective mirror finish windows	--	--	S
+ Under mount spare tire and carrier	S	S	S
+ Independent front jacks with dual motors	S	S	--
+ Level Up 6 point Auto Level system	--	O	S
+ Power Awning	S	S	S
+ Power Rear Jacks	S	S	--
+ 7,000 lbs Axles with 8 lug hubs	S	S	S
+ Trail Air Equa flex suspension	S	S	S
+ Patio scare lights	S	S	S
+ 50 AMP service with detachable power cord	S	S	S
+ Hydraulic slide outs	S	S	S
+ Slide Out Selector Valves with individual control	--	S	S
+ Exclusive one piece docking station	S	S	S
+ Black tank flush	S	S	S
+ Outside Speakers	S	S	S
+ Snap jack pins	S	S	S
+ Laminated floor construction	S	S	S

R = Ruby Edition, B = Brookstone, D = Diamond Package

S = Standard, O = Optional, -- = Not Available



	R	B	D
+ Ducted forced air heated holding tanks, water lines, and dump valves along with enclosed and insulation underbelly	S	S	S
+ Extra large, insulated, radius slam latch baggage doors	S	S	S
+ Easy Step 4 Step Entry into coach	--	S	S
+ 12" I Beam on all Floor Plans	S	S	S
+ Attic Vents	S	S	S
+ 40,000 BTU furnace with automatic ignition	S	S	S
+ 15,000 BTU air conditioner with quick cool	S	S	S
+ 10 gal. DSI gas/electric water heater	S	--	--
+ 16 gal. effective DSI gas/electric water heater	--	S	S
+ Engineered chambered frame and front cap create Turn Tec Technology	S	S	S
+ Aluminum framed vacuum bonded sidewalls	S	S	S
+ 40 LBS LP bottle compatible	--	S	S
+ Whole coach water filtration system	S	S	S
+ 12V battery disconnect	S	S	S
+ Roof ladder	S	S	S
+ Rear Gel Coated fiberglass cap	--	S	S
+ R-values (with Eskimo package) Walls R-10, floors R-28, Ceiling R-38	S	S	S

#### GALLEY

+ DuPont Corian Countertops and sink covers	S	S	S
+ Residential sized stone cast sink with pull out spray faucet	S	S	S
+ 22" oven with high output range and automatic igniter	S	S	S
+ Solid hickory hardwood refrigerator inserts	S	S	S
+ Extra Large 8 cubic foot double door refrigerator	S	S	--
+ 12 cu. Ft. four door refrigerator with ice maker	--	--	S
+ Residential 30" microwave oven	S	--	--
+ Residential 30" convection microwave oven	--	S	S
+ Extra large full extension drawers	S	S	S
+ Free standing dinette with flip up storage and four elegant chairs with padded seats and backs	S	S	S

	R	B	D
+ "Comfort Air" power fan with remote	O	S	S
+ Hardwood wine rack with goblet holder	--	S	S
+ Pantry with five full extension drawer boxes and hardwood fronts	--	S	--
+ Second pull out pantry with solid maple butcher block and storage	--	S	S

#### BEDROOM

+ Extra large dresser with residential size drawers	S	S	S
+ 32" HD LCD TV	O	S	S
+ Serta Brand residential 60" x 80" delux queen bed mattress	S	S	S
+ Nightstand with storage underneath and bed shelf with queen bed (two bed shelves with king bed)	--	S	S
+ 110v Outlets on both sides of Bed	--	S	S
+ His and her reading lights	--	S	S
+ Wire and frame for 2nd AC	S	S	S
+ Exclusive angled front wardrobe with cedar lining	S	S	S
+ Armoire with washer/dryer prep for stackable washer/dryer and louvered doors	S	S	S
+ Ultra Deep 31" Bed Room Slide	--	S	S

#### BATHROOM

+ One piece round front fiberglass shower with glass surround and adjustable shower head	--	S	S
+ Residential 40" vanity height with mirrored medicine cabinet	S	S	S
+ One piece moulded vanity top with integrated sink	--	S	S
+ Porcelain toilet with foot flush pedal	S	S	S
+ Heat and air conditioning ducts in every bathroom for comfort	S	S	S

## FREE ROADSIDE ASSISTANCE



*Coachmen provides one year of free Travel Easy™ emergency roadside assistance for those who buy a new Coachmen RV. Administered by Coach-Net®, this service gives Coachmen owners 24/7 access to operational, technical and emergency road services, including towing, fuel delivery, jump starts, lockout service, tire changes, mobile mechanic and unlimited technical advice. So no matter where you go, we're ready to help!*



**Forest River, Inc. encourages our customers to purchase their Forest River products from a local dealership whenever possible for the following reasons:**

- 1) Forest River, Inc. dealers are independently owned and operated businesses so priority service and scheduling is at their discretion and is often provided to customers that purchased their unit at that dealership.
- 2) Purchasing locally allows customers to establish meaningful relationships with a dealer, enhancing the RV experience through assistance with product questions, user tips or RV regulations for your state or country, and much more!
- 3) Canadian customers must meet requirements to bring an RV purchased out of the country to their home. These requirements may involve additional inspections and certifications, taxes and fees. Your local Canadian Dealer is a professional at meeting these requirements.
- 4) Scheduling timely warranty repairs and adjustments through a local dealership provides far greater flexibility and convenience to you, the customer!

It is the goal of Forest River, Inc. that all of our RV owners fully enjoy the RV experience and that customer satisfaction meets or exceeds their expectations!

*Owners club discounts and more — A free one-year membership in the Coachmen Owners Association comes with the purchase of any Coachmen product. This add-on value not only provides a host of travel services and campground discounts, but also a 24/7 online service that locates needed services while offering member savings at more than 180,000 merchants across the country. And, of course, the COA is an excellent way to share experiences with other Coachmen owners through rallies and caravans.*



**Learn More**  
Scan this barcode using a QR Reader on your smart phone to learn more about Forest River.



A Berkshire Hathaway company.



YOUR BROOKSTONE DEALER

Coachmen Recreational Vehicle, a division of Forest River P.O. Box 30, Middlebury, IN 46540

To learn more about Coachmen RV and our products and see how Coachmen is making the easy life easier, visit [www.coachmenrv.com](http://www.coachmenrv.com)

All information contained in this brochure is believed to be accurate at the time of publication. However, during the model year, it may be necessary to make revisions, and Coachmen reserves the right to make all such changes without notice, including changes in prices, colors, materials, equipment and specifications, as well as the addition of new models and the discontinuance of models shown in this brochure. Therefore, please consult with your Coachmen dealer and confirm the existence of any materials, design or specifications that are material to your purchase decision. **Printed in USA FOR 0924**