

# Super SPORT

By R-Vision



2011 Super Sport R-Vision

Sporty Trailer | Great Value

**800.282.4654**  
[www.trail-lite.com](http://www.trail-lite.com)



▶ 26BHS IN HUNTINGTON PLACE DECOR



SOFFIT LIGHTING AND HIGH RISE FAUCET COMPLETE THE RESIDENTIAL STYLED KITCHEN

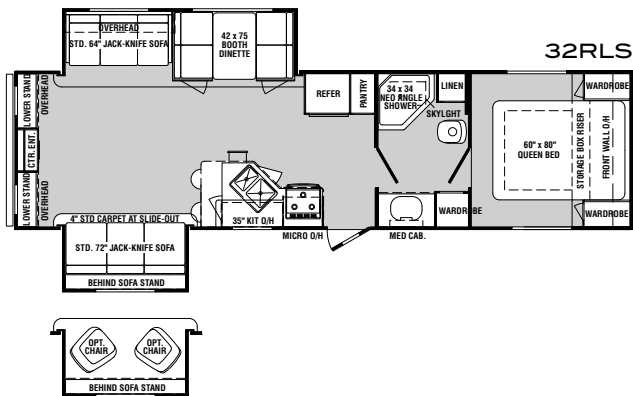
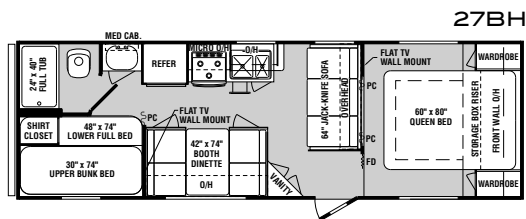
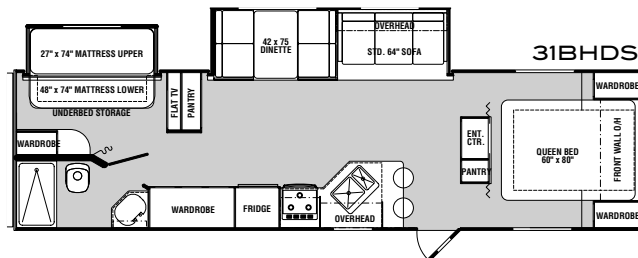
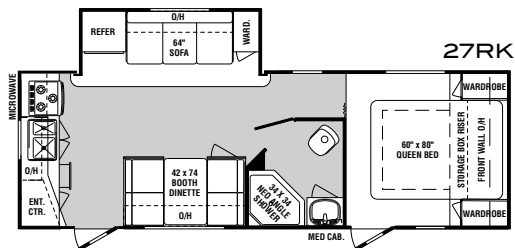
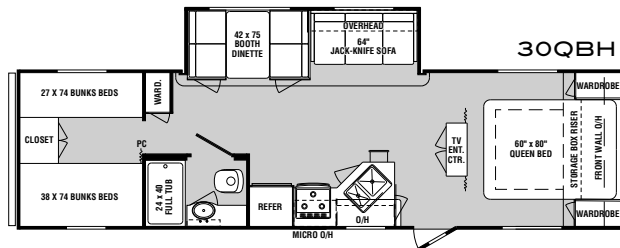
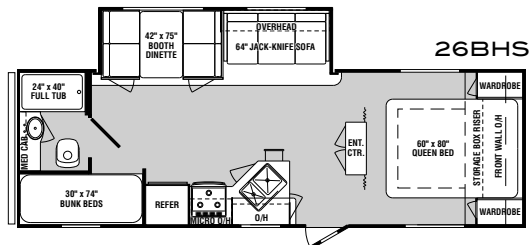
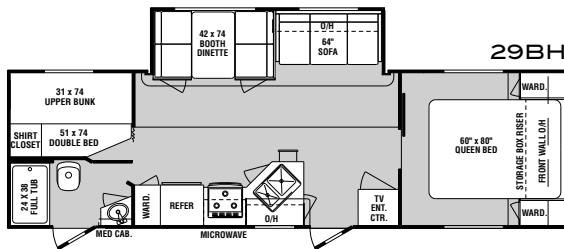
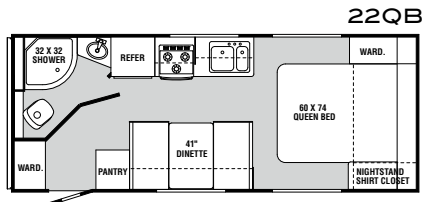
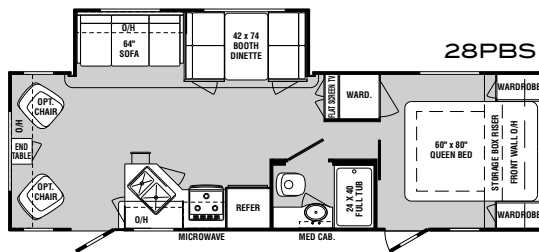
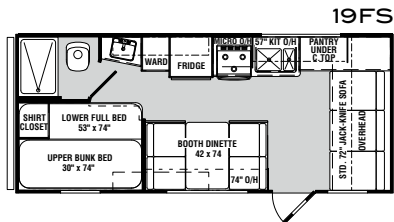


LARGE ENTERTAINMENT CENTER HOUSES OPTIONAL 19" OR 26" LCD TV

2011 Specifications	19 FS	22 QB	26 BHS	27 BH	27 RK	28 PBS	29 BH	30 QBH	31 BHDS	32 RLS
Gross Vehicle Weight Rating	7,700	TBD	7,700	7,700	TBD	TBD	TBD	11,440	11,440	11,440
Dry Hitch Weight (Appr.)	480	TBD	600	539	TBD	TBD	TBD	733	816	580
Dry Axle(s) Weight (Appr.)	3,264	TBD	4,612	3,992	TBD	TBD	TBD	5,674	5,874	6,232
Dry Unloaded Vehicle Weight (Appr.)	3,744	TBD	5,212	4,531	TBD	TBD	TBD	6,407	6,690	6,812
Net Carrying Capacity (NCC)	3,956	TBD	2,488	3,169	TBD	TBD	TBD	5,033	4,750	4,628
Tire Size	14"	14"	14"	14"	14"	15"	15"	15"	15"	15"
Overall Length	22'-6"	TBD	29'-0"	29'-2"	TBD	TBD	TBD	TBD	24'-8"	34'-6"
Overall Height (Including A/C)	10'-5"	10'-5"	11'-3"	10'-5"	11'-3"	11'-3"	11'-3"	11'-3"	11'-3"	11'-3"
Exterior Width (w/o Awning)	8'-0"	8'-0"	8'-0"	8'-0"	8'-0"	8'-0"	8'-0"	8'-0"	8'-0"	8'-0"
Water Heater	6 Gal.	6 Gal.	6 Gal.	6 Gal.	6 Gal.	6 Gal.	6 Gal.	6 Gal.	6 Gal.	6 Gal.
Grey Tank	40 Gal.	40 Gal.	40 Gal.	40 Gal.	40 Gal.	40 Gal.	40 Gal.	40 Gal.	40 Gal.	40 Gal.
Black Tank	40 Gal.	40 Gal.	40 Gal.	40 Gal.	40 Gal.	40 Gal.	40 Gal.	40 Gal.	40 Gal.	40 Gal.
Fresh Tank	40 Gal.	40 Gal.	40 Gal.	40 Gal.	40 Gal.	40 Gal.	40 Gal.	40 Gal.	40 Gal.	40 Gal.
Two 20 lb. L.P. Tanks Standard (30 lb. Tanks Optional)	S	S	S	S	S	S	S	S	S	S

\* Weights may vary by options. \*\* Tank manufacturer's listed water capacity (WC). Actual filled LP capacity is 80% of listing due to safety shut off required on tank.

# FLOORPLANS



# DECORS

DYNAMITE



HUNTINGTON PLACE



MOON BEAM



TAMARACK





## STANDARDS

**BODY CONSTRUCTION**

- 6" I-Beam Frame Powder Coated (Std. on 19FS, 22QB, 27BH)
- 8" I-Beam Frame Powder Coated (Std. on 26BHS, 27RK, 28PBS, 29BH)
- 10" I-Beam Frame Powder Coated (Std. on 30QBH, 31BHDS, 32RLS)
- White Wheels
- Frame Mounted Entry Step (Self Storing Single Step) Double steps (Std. on 19FS, 22QB, 26BHS, 27BH, 27RK)
- Frame Mounted Entry Step (Self Storing Single Step) Triple steps (Std. on 28PBS, 29BH, 30QBH, 31BHDS, 32RLS)
- Tandem Axles w/10" Electric Brakes
- 16" on center 2x2 Sidewall Studs w/R-7 Insulation
- .024 Aluminum Sidewall Exterior
- 5/8" Thick Flooring
- Roof; Seamless Rubber w/5" Wood Trusses, and Fiberglass Insulation. Walkable Deck, w/ Non-Ducted Roof for Air Conditioning (Std. on 19FS)
- Roof; Seamless Rubber w/5" Wood Trusses, and Fiberglass Insulation. Walkable Deck, w/ Ducted Roof for Air Conditioning (N/A on 19FS)
- Rain Gutters w/Downspouts Above Slide-outs
- Diamond Plate Front Lower Panel of Coach
- Molded ABS Fender Skirts - White
- Vinyl Exterior Graphics

**APPLIANCES AND ACCESSORIES**

- Double Door 6 cu. ft. Refrigerator
- Wedgewood 3-Burner Cooktop
- Lighted Powered Range Hood
- Pre-Wire for Microwave
- TV Prep and Mounting Bracket
- Systems Monitor Panel - Battery Levels, Holding Tank Levels, & Water Pump Switch

**INTERIOR**

- Newport Cherry II Cabinetry
- Square Frame Flat Panel Cabinet Doors w/ Mortise and Tenon Corners

- Wood Grain Panel Refrigerator Insert Doors
- Metal Drawer Glides
- Wallpaper Border Main Kitchen and Bath
- Kitchen Soffit Lights
- Decorative Slide-out Fascia (N/A on 19FS, 22QB, 27BH)
- Main Floors Linoleum Throughout
- Wood Grain Bath Door
- Wood Grain Swing Door to Bedroom (Std. on 29BH, 32RLS)
- Fabric Close-off Curtain to Main Bedroom (Std. on 22QB)
- Fabric Close-off Curtain Bunks (Std. on 19FS, 26BHS, 27BH, 29BH, 30QBH, 31BHDS)
- Pleated Folding Door Close-off to Bedroom (N/A on 19FS, 22QB, 29BH, 32RLS)
- Mini Blinds Throughout (Except Bunk Location)

**FURNITURE**

- Queen Bed 60" x 80" (N/A on 19FS, 22QB, 29BH)
- Queen Bed 60" x 74" (Std. on 22QB, 29BH)
- Full Bed (Std. on 19FS)
- Lower Bunk Full Bed (Std. on 27BH, 29BH, 31BHDS)
- Bunk Bed w/Vinyl Back Upper Only (Std. on 19FS, 27BH, 29BH, 30QBH, 31BHDS)
- Bunk Beds w/Vinyl Backs Upper and Lower (Std. on 26BHS)
- Double Bunk Beds (N/A on 19FS, 22QB, 29BH, 30QBH)
- Desk Chair (Std. on 22QB, 29BH)
- 2- Bar Stools (Std. on 19FS)
- Fabric covered Fold Down Sleeper Sofa (N/A on 22QB)
- Booth Dinette w/Fabric Cushions w/Vinyl Backs, End Door Storage Both Booths (N/A on 28PBS, 29BH)
- U-Shape Booth Dinette w/Fabric Cushions w/ Vinyl Backs (Std. on 28PBS, 29BH)

**ELECTRICAL SYSTEMS AND LIGHTS**

- Electrical Management System - 30 AMP
- 30 AMP Power Cord
- A-Frame Battery Rack
- 55 AMP Converter w/Charger

- Porch Light / Security Light
- Patio Side 120V Exterior Recept
- Patio Side Cable TV Hook-up
- Double Pancake All Ceiling Locations
- Interior Ceiling Light Switches
- Kitchen Soffit Lights
- Single Pancake Lights at Bunk Locations (Std. on 19FS, 26BHS, 27BH, 29BH, 30QBH, 31BHDS)

**PLUMBING AND LP SYSTEMS**

- Platinum Double Bowl Kitchen Sink w/Hi-rise Goose Neck Faucet
- 6-Gallon L.P. Water Heater
- Water Heater By-pass
- Thetford Toilet - w/Foot Flush
- Two 20 lb. L.P. Tanks w/Automatic Changeover
- Rotocast Holding Tanks
- Rotocast Fresh Tank

**HEATING, VENTS AND AIR CONDITIONING**

- Electronic Ignition Furnace
- Gas Line Hook-Up at front of Coach

**WINDOWS, DOORS AND AWNINGS**

- Radius Windows
- Safety Glass Windows (Opt. to Std.)
- Galley Window
- Square Entry Door w/Window, Dead Bolt, and Screen Door
- Skylight in Bathroom
- Exterior Entry Assist Entry Door Handle



**RUGGED I-BEAM FRAME WITH FLUSH FLOOR SLIDE MECHANISM PROVIDES A STRONG FOUNDATION**



**5" ROOF TRUSS WITH DUCTED AC AND WALKABLE DECKING**

## OPTIONS

- Spare Tire w/ABS Cover
- Stabilizer Jacks (4)
- Electric Tongue Jack w/Light
- Rear Ladder
- Canadian RV Certification
- Wedgewood Oven w/3-Burner Cooktop
- Bi-Fold Range Cover
- Microwave
- Kitchen Sink Cover (1)
- 5.1 Home Theater w/DVD Player, (5) Interior Speakers, TV Antenna w/Cable Hook-ups
- 26" LCD TV (26BHS, 31BHDS only)
- 19" LCD TV Loose Ship (N/A on 26BHS, 31BHDS)
- TV Antenna w/Booster
- RVQ Grill w/Stand
- New Decors; Dynamite (Red), Moon Beam (Brown), Huntington Place (Beige), Tamarack (Green)
- Carpet and Pad Living Area
- Carpet and Pad Bedroom
- Two Barrel Chairs IPO Jackknife Sofa (32RLS only)
- Hide-a-Bed w/Air Mattress (Optional for 26BHS, 28PBS, 29BH, 30QBH, 31BHDS, 32RLS)
- Freestanding Dinette w/Four Chairs (Optional for 26BHS, 30QBH, 31BHDS, 32RLS)
- 6-Gal Gas/Elec. DSI Water Heater
- Two 30 lb. L.P. Tanks w/Automatic Changeover w/ABS Cover
- Outside Shower
- A/C 13,500 BTU - Non-Ducted (Optional for 19FS, 22QB)
- A/C 13,500 BTU - Ducted (N/A on 19FS, 22QB)
- A/C 15,000 BTU - Ducted (N/A on 19FS, 22QB)
- Patio Awning
- Bedroom Entry Door (Optional on 27RK, 28PBS, 29BH)

YOUR DEALER:

**Super  
SPORT**  
By R-Vision

**QUALITY FEATURES FOR THE  
BEST VALUE IN THE MARKET**

**R-VISION**

606 NELSON'S PKWY., WAKARUSA, IN 46573  
800.282.4654 • WWW.TRAIL-LITE.COM

As R-Vision constantly strives to improve our product, all specifications listed in this informative brochure are subject to change without notice or obligation. Photos may show optional equipment which is not included in the purchase price of the unit. Test drive and review a current model on your dealer's lot today.