

# Chaparral

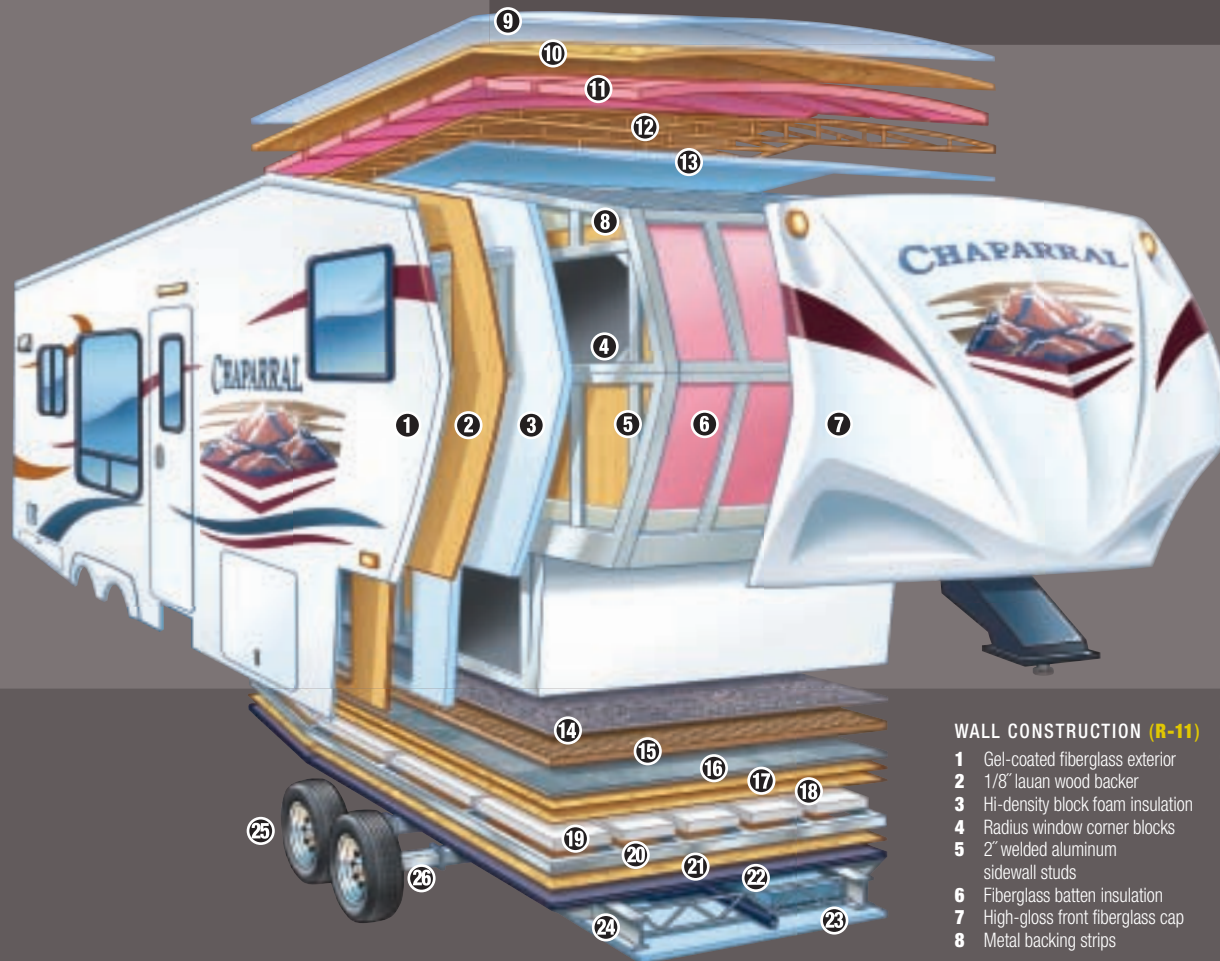
Engineered to go where you want, when you want.



# Chaparral

## Two Chaparral models specifically engineered to take what you want, whenever you want.

— The economically minded LITE is perfect for a half-ton truck, while the Mid Profile is just plain ready for anything.



**With a half-ton truck!** — A big change to the Chaparral Lite is the new aerodynamic fiberglass front cap and hitch placement. Coachmen TurnTec Engineering combines an aggressive frame and cap design to achieve the industry's best turning radius, so you can handle sharp campground turns and other tight spots — all with a half-ton truck!

**Quality lamination** — Our quality lamination process not only extends from the floor to the sidewalls, but also to the exterior underbelly, insulating it from extreme temperatures and sealing out dirt and pests. Extra shine — put aluminum wheels with the Chaparral Lite's fresh new colors and you've got a fifth wheel that says something special.

### WALL CONSTRUCTION (R-11)

- 1 Gel-coated fiberglass exterior
- 2 1/8" lauan wood backer
- 3 Hi-density block foam insulation
- 4 Radius window corner blocks
- 5 2" welded aluminum sidewall studs
- 6 Fiberglass batten insulation
- 7 High-gloss front fiberglass cap
- 8 Metal backing strips

### ROOF CONSTRUCTION (R-13)

- 9 One-piece EPDM rubber roof with 12-year warranty
- 10 3/8" fully walkable roof decking
- 11 Fiberglass batten insulation
- 12 5" roof trusses
- 13 1/8" ceiling decking with vinyl protection

### FLOOR CONSTRUCTION (R-14)

- 14 Residential grade carpet with stain protection
- 15 Residential grade carpet padding
- 16 Residential grade linoleum
- 17 1/8" lauan wood backer
- 18 2nd 1/8" lauan wood backer
- 19 Hi-density block foam insulation
- 20 2" welded aluminum floor joists
- 21 1/8" lauan wood backer
- 22 Darco Floor bond (main floor)
- 23 Polypropylene fully enclosed sub-floor

### TIRES AND CHASSIS

- 24 10" or 8" steel "powder coated" I-beam frame
- 25 15" or 16" radial tires
- 26 EZ Lube axles

## Our 'lite' gives nothing away.

**You can tow fifth wheel luxury and space with a half-ton truck!** — The all-new Chaparral Lite is engineered to be the lightest luxury fifth wheel on the market. Designed for the towing capacity of a half-ton pickup truck, the Chaparral Lite offers spacious interiors with quality features and appointments everywhere you look.

Our state of the art manufacturing process utilizes lightweight lamination in floor and walls. The result: we give the half-ton truck customer a lot more coach at the same "lite" weight of our competitors. Everything you expect with a high-end fifth wheel is still there.



268RLE — Shown in Fall River decor



268RLE — Shown in Fall River decor

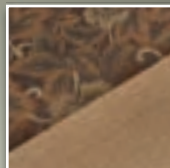
## CHAPARRAL DECOR



Turkish Coffee



Fall River



Cappuccino

**With full-sized slideouts and more, the all-new Chaparral Lite won't leave anyone feeling cramped or second best.** Just consider features like the Jensen AM/FM/CD/DVD player and marine grade exterior speakers, or the Magic Night Sleep System's instantly inflatable mattress,

or our full-sized queen beds (80" x 60"), or our bigger Pack Max Storage system and convenient universal docking station — all new and designed to make sure your RV time is quality time.



Marine grade exterior speakers are located beneath the awning and controlled by the A/B stereo switch.



12 volt battery disconnect quickly and conveniently provides a quick shutdown. No fumbling with battery cables for storage of your Chaparral while extending the battery's lifespan.



Pack Max Storage — Larger, insulated pass-through storage doors make more room for coolers and camping equipment.



Put aluminum wheels with the Chaparral Lite's fresh new colors and you've got a fifth wheel that says something special.

In the bedroom, soft, roomy slumber awaits with this full-sized queen (60" x 80") pillowtop mattress pictured above. While out in the main living space, the Magic Night Sleep System instantly deploys an air mattress with the push of a button.

Your all new outside kitchen will be the envy of the neighbors. With a half sized fridge and pull-out shelf for a cooktop and plenty of cabinet space, you'll never have to cook inside again.



### Dry Camp Package

Sometimes you may want to go off the beaten path. The Chaparral Dry Camp Package makes it easier to go wherever you want, stop wherever you want, without hookups: the ultimate freedom!

The package includes both lighting and stereo powered by your 12-volt battery, plus built-in space that can be used for a

generator. Then there is the fully enclosed underbelly that also seals out dirt and pests.

Termination valves are enclosed and are part of a universal docking station that conveniently houses, in one location, items such as city water hookup, fresh water fill, electrical and satellite hookups.

Add the rest of our rugged Chaparral features, and you have a self-contained fifth wheel ready for any new adventure.



**Chaparral Mid Profile — ready with more! —** The Chaparral Mid Profile is engineered to provide outstanding and easy-to-use accommodations wherever you go. Family and friends can join you in style on a multitude of RV excursions, or you can just get away to dry camp with all the comforts of home in tow. With the new Chaparral Mid Profile, you can do more than you've ever thought of before.



Turkish Coffee decor



Turkish Coffee decor

A universal docking station conveniently houses, in one location, items such as city water hookup, fresh water fill, electrical and satellite hookups.



A new hitch cover adds aerodynamic style, incorporating a built-in LED light, helping you connect when light is hard to come by.



The 355RLTS model incorporates a rear loft that provides roomy loft sleeping with an industry best 29 inches of headroom from mattress to ceiling. A second living area underneath allows 6'3" of headroom and makes for a great kids room or guest room complete with an LCD flat screen television.



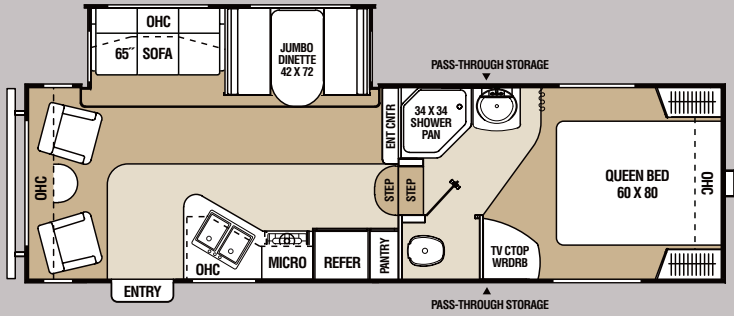
The 330FBH is a floorplan that delivers on both space and style. Beautiful cabinetry, solid surface countertops, integrated entertainment center and rustic flooring all combine to give a sense of relaxed luxury. Shown in Cappuccino decor



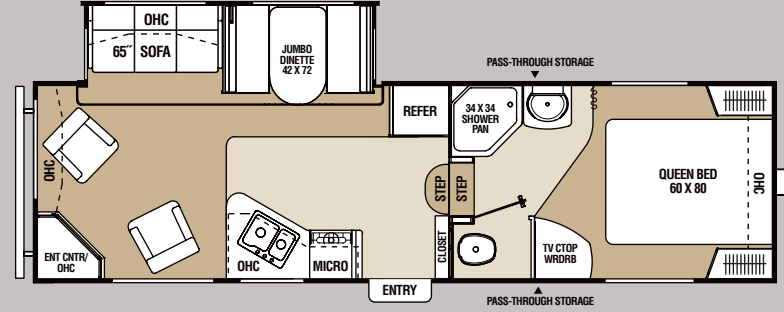
The 310RLTS allows you to instantly change your view from what's outside your window to what's on your favorite channel with a retractable LCD television. Or enjoy the cozy fireplace.



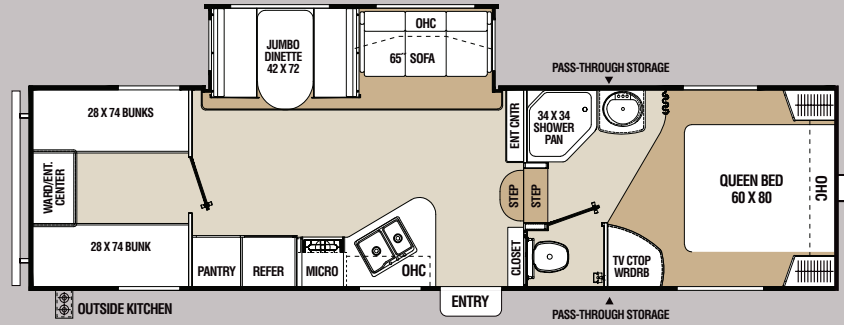
A bedroom with room to grow. With plenty of open space, full wall cabinetry, a large LCD TV and a sleeping capacity of three, the 330FBH has it all. Shown in Cappuccino decor



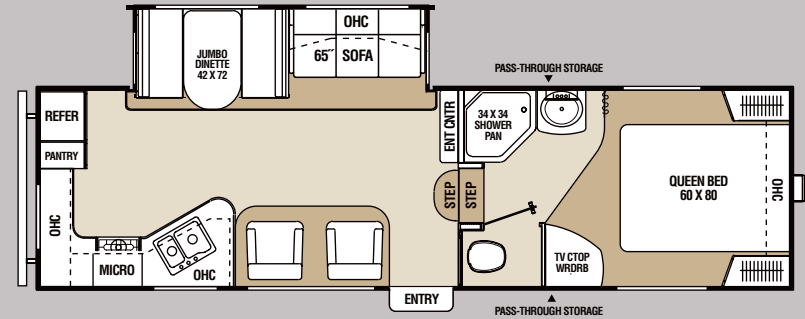
267RLS



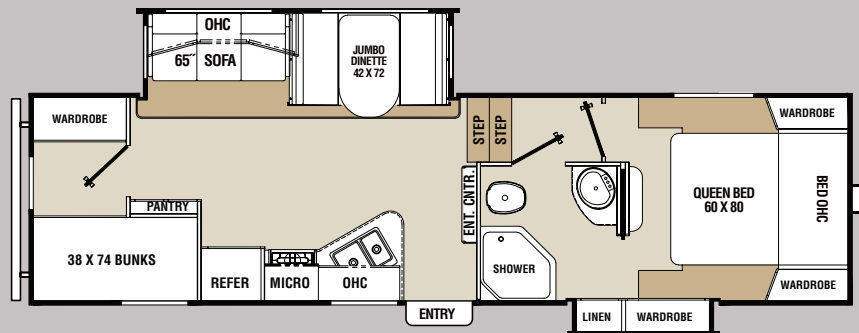
268RLE



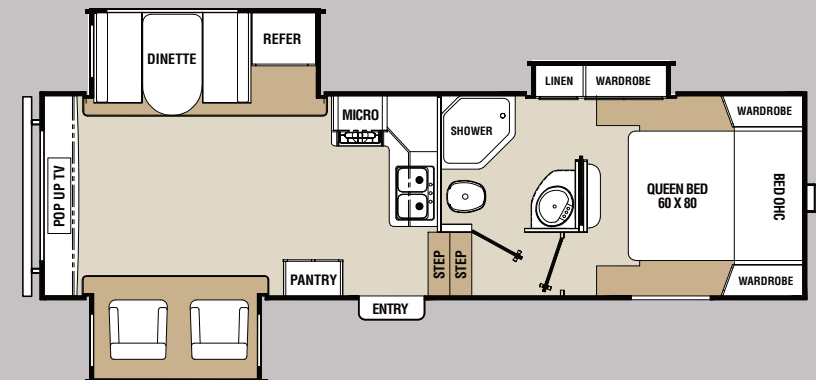
269BHS



270RKS

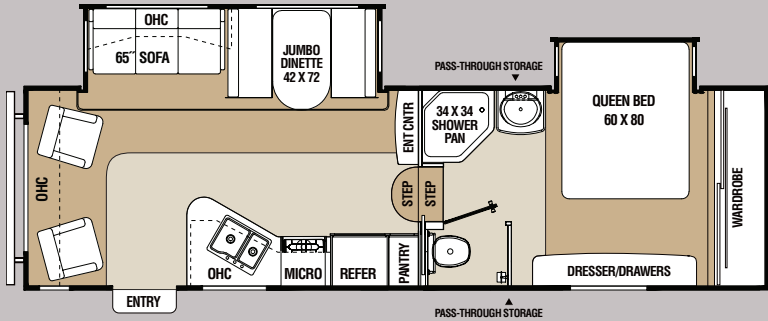


271BHS

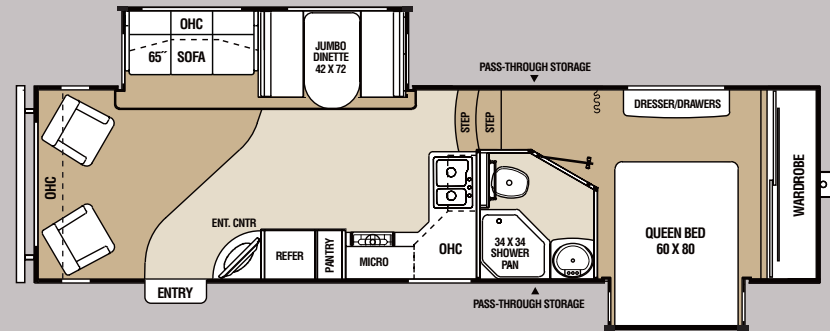


275RLS

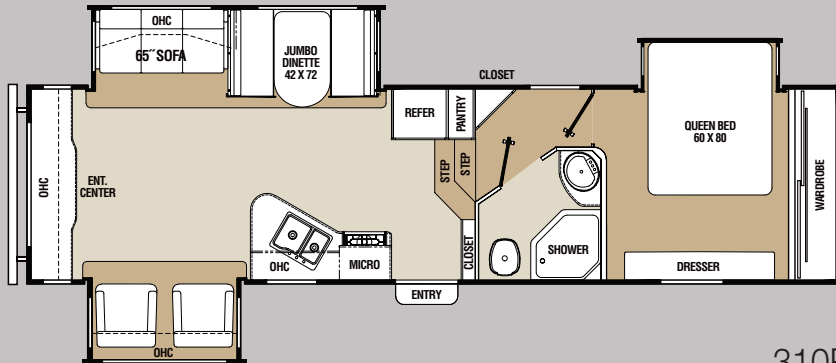




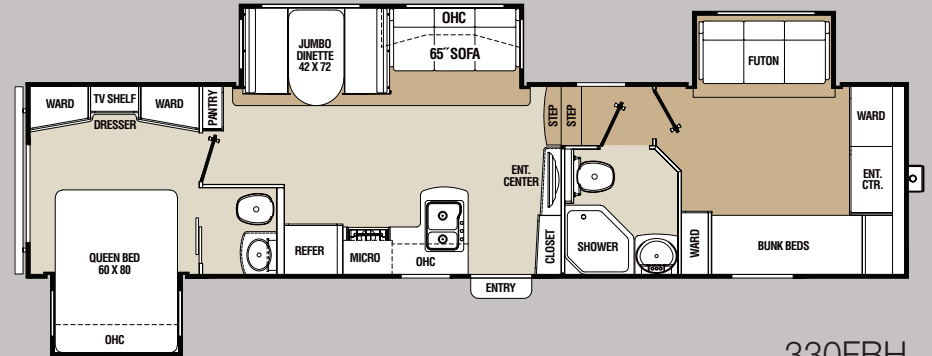
276RLDS



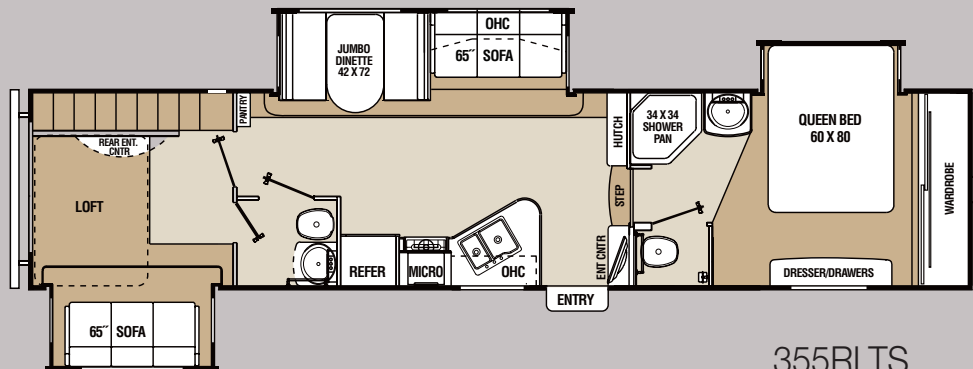
278RLDS



310RLTS



330FBH



355RLTS



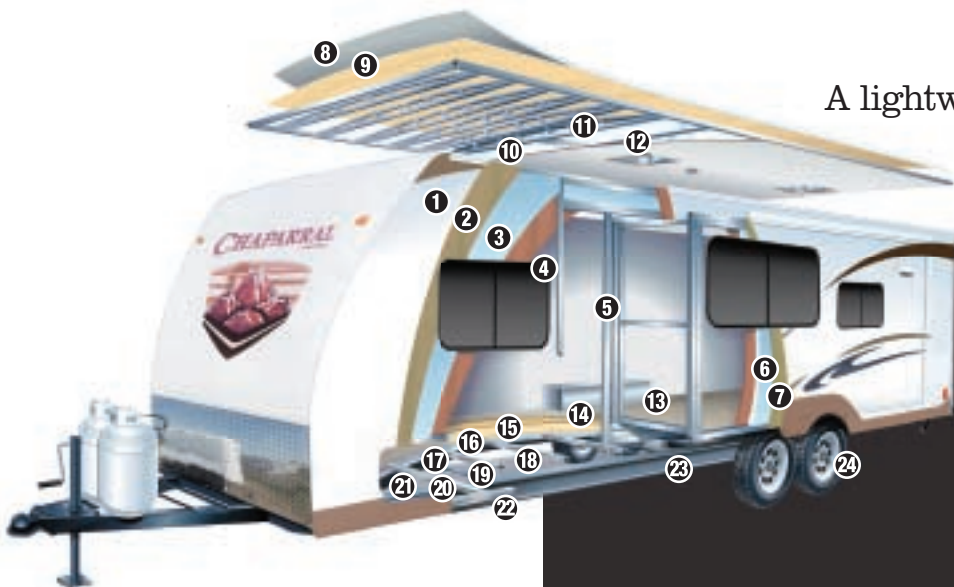
Chaparral Lite Travel Trailer — the going gets easier. Now, all the benefits you're used to in the Chaparral fifth wheel are available in this travel trailer platform. The Chaparral travel trailer offers innovative floorplans and plenty of extras, all in a lightweight package that can be towed by half-ton vehicles. With lengths available up to thirty-four feet, packing comfort into this lightweight travel trailer is easy, you won't have to leave luxury at home.



Innovations like a built-in 180° swiveling LCD television deliver flexibility while saving weight and space.

A lightweight platform that really delivers.

Space abounds in the 29BHS model shown at right. A large, open interior with a beautiful linoleum floor and maple cabinetry creates a feeling that you left nothing behind, including luxury.



**WALL CONSTRUCTION (R-11)**

- 1 Gel-coated fiberglass exterior
- 2 1/8" lauan wood backer
- 3 Hi-density block foam insulation
- 4 Radius window corner blocks
- 5 2" welded aluminum sidewall studs
- 6 Fiberglass batten insulation
- 7 Metal backing strips

**ROOF CONSTRUCTION (R-13)**

- 8 One-piece EPDM rubber roof with 12-year warranty
- 9 3/8" fully walkable roof decking
- 10 Fiberglass batten insulation
- 11 5" aluminum roof trusses
- 12 1/8" ceiling decking with vinyl protection

**FLOOR CONSTRUCTION (R-14)**

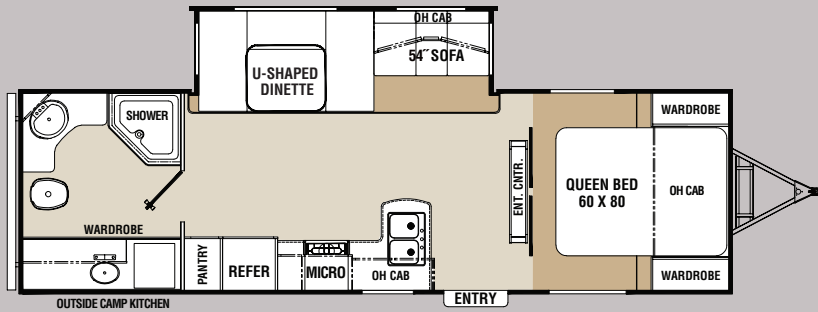
- 13 Residential grade carpet with stain protection
- 14 Residential grade carpet padding
- 15 Residential grade linoleum
- 16 1/8" lauan wood backer
- 17 2nd 1/8" lauan wood backer
- 18 Hi-density block foam insulation
- 19 2" welded aluminum floor joists
- 20 1/8" lauan wood backer
- 21 Darco Floor bond (main floor)
- 22 Polypropylene fully enclosed sub-floor

**TIRES AND CHASSIS**

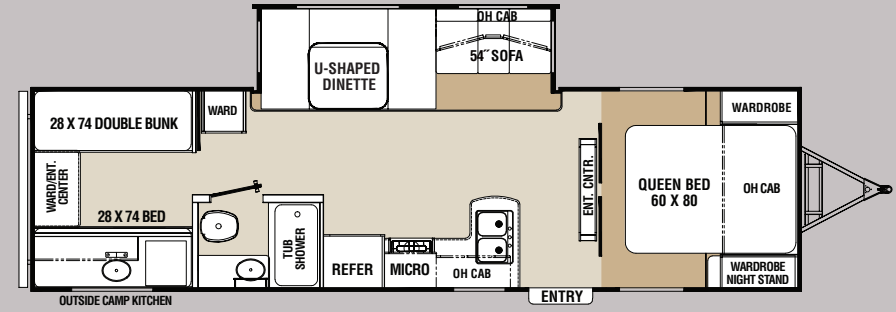
- 23 8" or 6" steel "powder coated" I-beam frame
- 24 15" radial tires



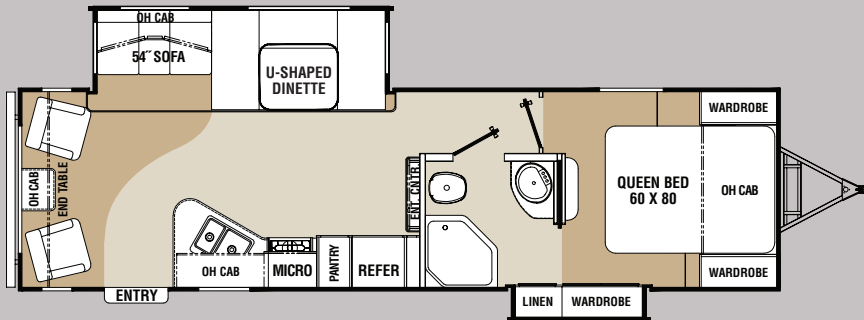
29BHS — Shown in Turkish Coffee decor



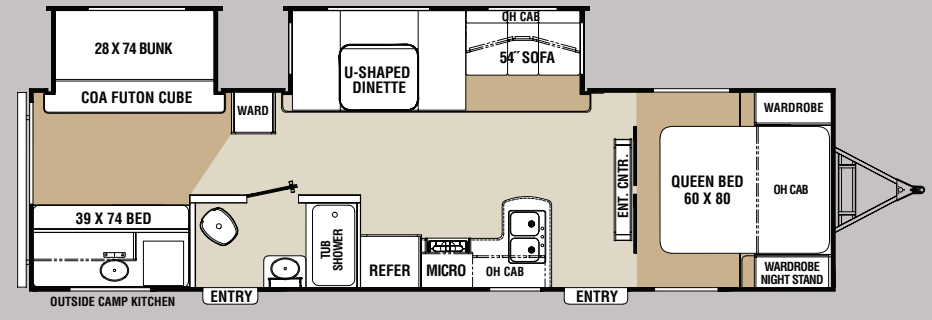
28RBS



29BHS



30RLS



31BHS



SPECIFICATIONS

Chaparral Lite Travel Trailers

	28RBS	29BHS	30RLS	31BHS
Base Weight	6,320	6,670	6,950*	7,425
Carrying Capacity	3,080	2,730	2,340*	2,355
Hitch Weight	930	760	785*	780
Exterior Length	31' 8"	33' 11"	33' 10"*	35' 7"
Exterior Height (Includes A/C)	10' 8"	10' 8"	10' 8"*	10' 9"
Fresh Water Capacity (gal.)	36	36	36*	36
Waste Water Capacity (gal.)	32	32	32*	32
Gray Water Capacity (gal.)	32	32	32*	32

\* Estimated at time of print. Visit [CoachmenRV.com](http://CoachmenRV.com) for up-to-date specifications.

**PRODUCT STANDARDS & OPTIONS**

**L — LITE FW & TT**

**M — MID PROFILE FW**

<b>INTERIOR</b>	<b>L</b>	<b>M</b>	<b>SLEEPING</b>	<b>L</b>	<b>M</b>	<b>EXTERIOR/CONSTRUCTION</b>	<b>L</b>	<b>M</b>	<b>L</b>	<b>M</b>	
Maple cabinets	S	S	60" x 80" residential pillowtop queen bed	S	S	Aluminum framed laminated sidewalls	S	S	Cappuccino décor	0	0
Mortise and tenon arched cabinet doors	S	S	Large storage area beneath bed	S	S	Gel coated filon exterior walls	S	S	Corian countertop	N/A	0
Smoked glass cabinet doors (select areas)	S	S	Cable/satellite & HD television ready	S	S	Pre-backed for aftermarket slideout awnings	S	S	Freestanding dinette with 4 chairs	0	0
Oil rubbed bronze hardware	S	S	Jack knife sofa with storage (355RLTS)	N/A	S	Aluminum framed laminated floor	S	S	Comfort air ventilator fan	N/A	0
Residential linoleum flooring (bath & kitchen)	S	S	Flat floor bedroom – bedroom slideout models	N/A	S	5" roof trusses with 3/8" fully walkable roof	S	S	Ex-large 8 cubic foot double door refrigerator	N/A	0
Residential carpet in living room & bedroom	S	S				Rubber roof	S	S	Raised panel refrigerator door front	0	0
Jack knife sofa with storage	S	S	<b>BATH AND WATER</b>			Heavy tint safety glass windows	S	S	Magic Night Sleep System with air mattress	0	0
2 – swivel rockers (select models)	S	S	Porcelain toilet with foot pedal flush	S	S	TurnTec fiberglass front cap	S	S	La-Z-Boy recliners in place of swivel rockers		
Jumbo booth dinette with pedestal table	S	S	Powered bath vent	S	S	30" wide entrance door	S	S	(276RLS/278RLDS/310RLTS)	N/A	0
Hard window valances with lambrequin legs	S	S	Hardwood medicine cabinet with mirror	S	S	Powder coated forged I-beam frame w/camber	S	S	Electric ceiling fan	N/A	0
Day/night window shades	S	S	Shower surround	S	S	Fully extended hitch pin	S	S	Electric fireplace (310RLTS)	N/A	0
Soft valance with drapes window treatment	S	S	Skylight over the shower	S	S	Easy opening triple entry step	S	S	26" LCD HD television (278DS model only)	0	N/A
AM/FM/CD/DVD player with mp3 hook up	S	S	Decorative glass shower door	S	S	Heavy-duty 5,200 lb. easy lube axles	S	S	32" LCD HD television (n/a in 278RLDS model)	N/A	0
Digital television antenna	S	S	Toilet paper holder	S	S	Radial tires	S	S	Comfort air ventilator fan	N/A	0
Satellite/cable TV hook up	S	S	Towel rack	S	S	White rally wheels (n/a on 355RLTS)	S	S	26" LCD HD television-bunk room		
Slide-out room-6'1" interior height	S	S	6 gallon gas/electric hot water heater with DSI	S	N/A	Electric front jacks	S	S	(330FBH/355RLTS)	N/A	0
LP leak alarm	S	S	10 gallon gas/electric hot water heater with DSI	N/A	S	Quick release extra long leg pins	S	S	Magic Night Sleep System with air mattress –		
Fire extinguisher	S	S	On-demand water pump	S	S	Rear stabilizer jacks	S	S	bedroom (355RLTS only)	N/A	0
Smoke detector	S	S	Water heater bypass valve	S	S	Rear bumper with sewer hose storage	S	S	Thermo pane tinted safety glass windows	N/A	0
CO detector	S	S	Black tank flush	S	S	Universal docking station	S	S	LED fiberglass hitch cover	0	0
						Attic vent	N/A	S	Super duty 6,000 lb. easy lube axles		
<b>GALLEY</b>			<b>ELECTRICAL/HEATING/AC</b>			LPG quick connect	S	S	(std. in 355RLTS)	N/A	0
Laminate countertops with self edge	S	S	12 volt battery disconnect	S	S	Patio awning	S	S	Equa-flex suspension	N/A	0
Stainless steel double bowl sink	S	S	30 amp service	S	S	Pack Max Storage	S	S	15" aluminum wheels (n/a in model 355RLTS)	0	0
Sink covers (2)	S	S	55 amp electric converter	S	S	Outside speakers	S	S	16" aluminum wheels (std. in model 355RLTS)	N/A	0
Hi-rise faucet	S	S	13,500 BTU central air conditioner	S	S	Extra large swing out grab handle at entrance	S	S	Spare tire with steel rim	0	0
Hi-rise faucet with pull out sprayer	N/A	S	Double 30 lb. LP bottles with auto change over	S	S	Outdoor kitchen with grill, sink, storage			Rear ladder	0	S
6 cubic foot double door refrigerator	S	S	31,000 BTU energy efficient furnace	S	S	and refrigerator (269BHS/28RBS/ 29BHS/31BHS models only)	S	N/A	Electric rear stabilizer jacks (n/a in model 355RLTS)	N/A	0
3 – burner stove top with large 21" oven	S	S	GFI circuit	S	S	Breakaway switch	S	S	50 amp service with prep for 2nd A/C	N/A	0
Microwave oven – turn style	S	S	Awning light receptacle with switch	S	S				15,000 BTU central air conditioner	0	0
Knife block behind stove top	S	S							Electric patio awning	0	0
Lighted power range hood	S	S									
Large drawers with steel ball bearing guides	S	S									
Trash can storage area	S	S									
Large pantry	S	S									

**AVAILABLE OPTIONS**

	<b>L</b>	<b>M</b>
Turkish Coffee décor	0	0
Fall River décor	0	0

S – STANDARD      O – OPTIONAL  
N/A – NOT AVAILABLE

**MANDATORY PACKAGES**

**POLAR PACKAGE**

Manufactured for cold weather camping with:  
Roof insulations – R -13  
Wall insulations – R -11  
Floor insulations – R -14  
Fully enclosed underbelly with heated and enclosed dump valves

**DRY CAMP PACKAGE**

12 volt stereo/mp3 compatible  
All slideout lights are 12 volt  
Huge fresh water, gray and black tanks  
Space for dual batteries  
Heavy-duty axles for off road use  
Dedicated space for after market generator — Mid Pro



**TURNTEC ENGINEERING — #1 IN INDUSTRY**

Built for short bed trucks. TurnTec combines a specially designed frame utilizing 45 degree corners with an aerodynamic front cap. The result is the most maneuverable fifth wheel in existence!

SPECIFICATIONS	Chaparral Lite						Chaparral Mid Profile				
	267RLS	268RLE	269BHS	270RKS	271BHS	275RLS	276RLDS	278RLDS	310RLTS	330FBH	355RLTS
Base Weight	6,536	6,877	7,931	6,746	7,766	7,771	7,913	8,086	9,484	9,457	10,465
Carrying Capacity	2,562	2,349	3,269	2,399	2,171	2,121	3,269	3,573	2,476	2,473	3,505
Hitch Weight	1,098	1,226	1,680	1,146	1,730	1,690	1,780	1,659	1,960	1,930	1,970
Exterior Length	29' 2"	30' 7"	34' 1"	30' 3"	31' 2"	30' 8"	30'	32' 2"	33' 11"	37' 3"	38' 4"
Exterior Height (Includes A/C)	11' 11"	11' 11"	11' 11"	11' 11"	11' 11"	11' 11"	11' 11"	11' 11"	12'	12'	12' 8"
Fresh Water Capacity (gal.)	47	47	47	47	47	47	60	60	60	60	60
Waste Water Capacity (gal.)	42	42	42	42	42	42	45	45	45	75	90
Gray Water Capacity (gal.)	42	84	84	84	84	42	45	90	90	75	90

## Big benefits for new owners



**Owners club discounts and more** — A free one-year membership in the Coachmen Owners Association comes with the purchase of any Coachmen product. This add-on value not only provides a host of travel services and campground discounts, but also a 24/7 online service that locates needed services while offering member savings at more than 180,000 merchants across the country. And, of course, the COA is an excellent way to share experiences with other Coachmen owners through rallies and caravans.

## Free roadside assistance



Coachmen provides one year of free Travel Easy™ emergency roadside assistance for those who buy a new Coachmen RV. Administered by Coach-Net®, this service gives Coachmen owners 24/7 access to operational, technical and emergency road services, including towing, fuel delivery, jump starts, lockout service, tire changes, mobile mechanic and unlimited technical advice. So no matter where you go, we're ready to help!

All information contained in this brochure is believed to be accurate at the time of publication. However, during the model year, it may be necessary to make revisions, and Coachmen reserves the right to make all such changes without notice, including changes in prices, colors, materials, equipment and specifications, as well as the addition of new models and the discontinuance of models shown in this brochure. Therefore, please consult with your Coachmen dealer and confirm the existence of any materials, design or specifications that are material to your purchase decision.

CFR-40 09.10 Printed in USA



**Coachmen Recreational Vehicle Company, LLC**  
**P.O. Box 30, Middlebury, IN 46540**

To see how Coachmen is making the easy life even easier, visit [www.easyRVing.com](http://www.easyRVing.com) or call 1.800.353.7383.