

Lightweight - Affordable - Quality



Get There in Style and Comfort.



FULL FEATURED, EASY TOWING.

When it comes to an affordable travel trailer that's easy to tow and loaded with standard features, go for an i-Go Lite from EverGreen. The i-Go is lightweight and tracks with ease behind smaller tow vehicles because i-Go models up to 28 feet are just 7 ½ feet wide. This width to weight ratio allows the i-Go to be towed by jeeps, half-ton pickups or mid-sized SUVs. Yet the i-Go has a full sized feel inside due to EverGreen's deep slide outs. Families who require a full-sized, 8 foot wide travel trailer, can opt for an i-Go that is 29 feet and up. Take a closer look and discover why so many action-loving families are going places in the i-Go Lite.





DESIGNED TO GO THE DISTANCE – AND THEN SOME.

Built with “the EverGreen difference,” i-Go is constructed to provide you years of trouble-free service.

CONSTRUCTION FEATURES

WALLS

1. CompositTek™ Inner Liner
2. DuraLite aluminum frame
3. High-density, block foam insulation
4. Plywood substrate
5. Glossy fiberglass reinforced exterior

ROOF

6. CompositTek™ Inner Liner
7. Fully welded, crowned aluminum frame
8. High-density, block foam insulation
9. Plywood substrate
10. Reflective, white TPO roofing

FLOOR

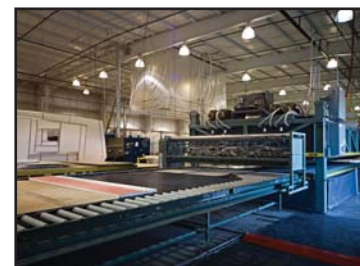
11. Enclosed seamless underbelly
- 12 Woven plastic floor brace
13. Plywood substrate
14. DuraLite aluminum frame
15. High density block foam insulation
16. Plywood substrate
17. Padded no crack vinyl floor
18. Steel I-beam frame

DURALITE™ DOUBLE WELDED ALUMINUM STRUCTURE

i-Go is built with the DuraLite™ Double Welded Aluminum Structure. It includes six-sided double-welded aluminum frame construction in the walls, roof and floors, with header framing around all doors, windows and baggage door openings. This strong, durable frame eliminates flexing and reduces leaks. So it's superior to wood construction used in other travel trailers, which can rot when exposed to water.

VACUUM LAMINATION

Like most EverGreen RVs, i-Go is built with vacuum lamination in the walls, roof and floor. Dense, block foam insulation is coated with a urethane adhesive which becomes super bonded under the heat and high pressure of EverGreen's vacuum lamination process. This results in a stronger, yet lighter and more durable coach that's better insulated for all seasons.



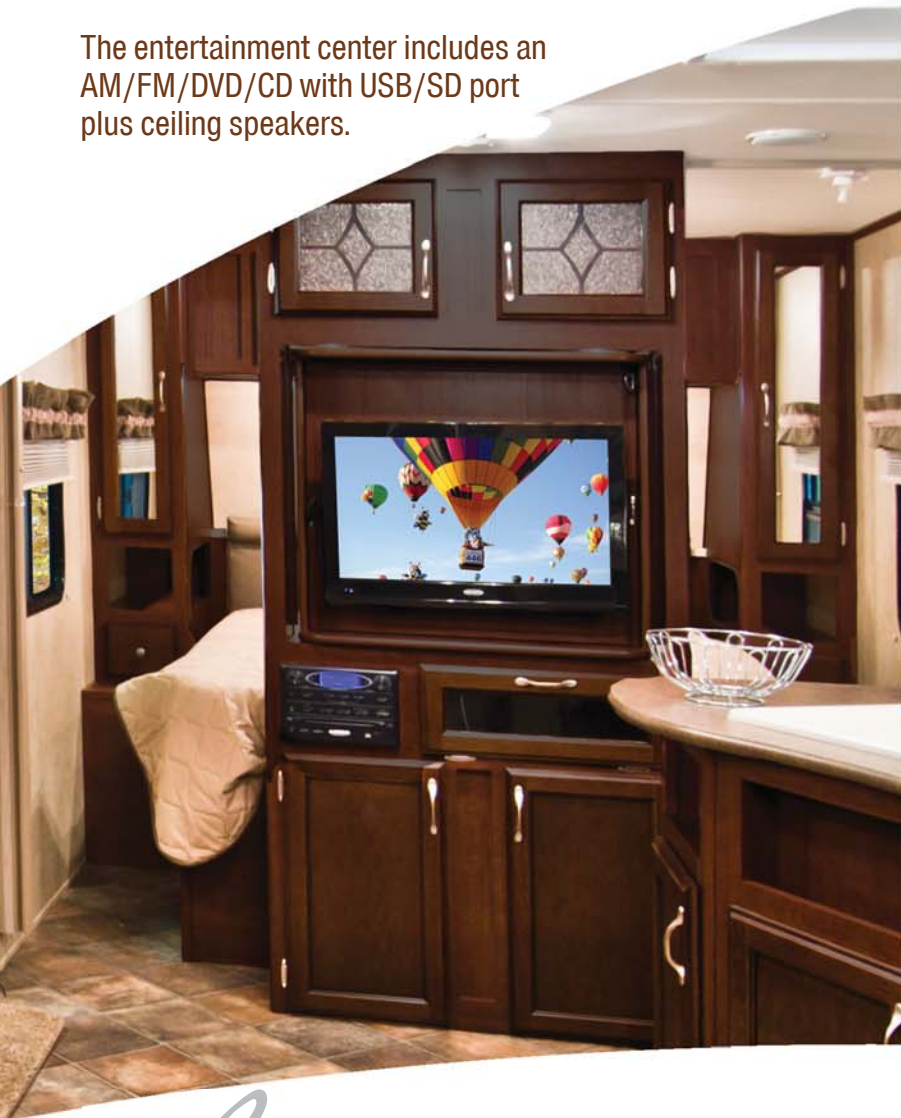
COMPOSITEK™

Four times the strength of plywood, CompositTek™ inner sidewalls and ceiling panels are far superior to wood. Composite materials resist moisture, which can lead to rot, mold and mildew that destroy other travel trailers. Composites also weigh as much as 20 percent less, making the coach lighter and easier to tow with the vehicle you already own. And because CompositTek™ replaces plywood elements in the i-Go Lite, there are less harmful VOCs, such as formaldehyde, allowing your family to breathe easier in an EverGreen.



With the double door refrigerator/freezer, microwave and three-burner range, everything is set to prepare meals.

The entertainment center includes an AM/FM/DVD/CD with USB/SD port plus ceiling speakers.



*S*PACE TO UNWIND AND RECHARGE.

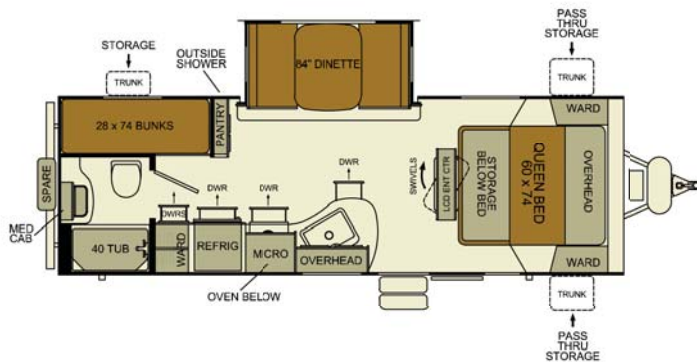
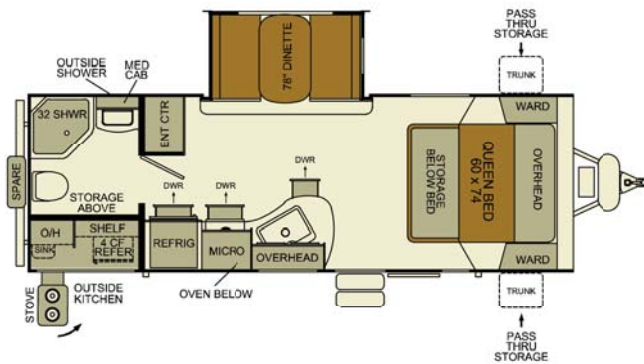
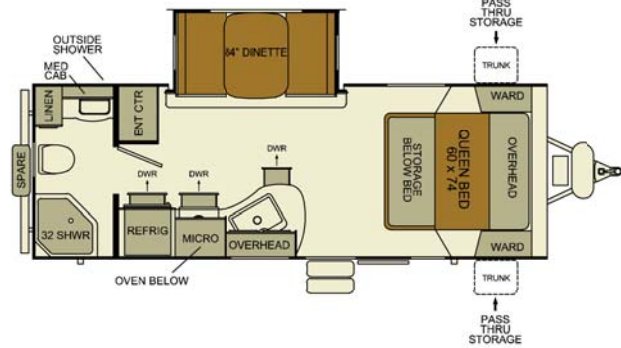
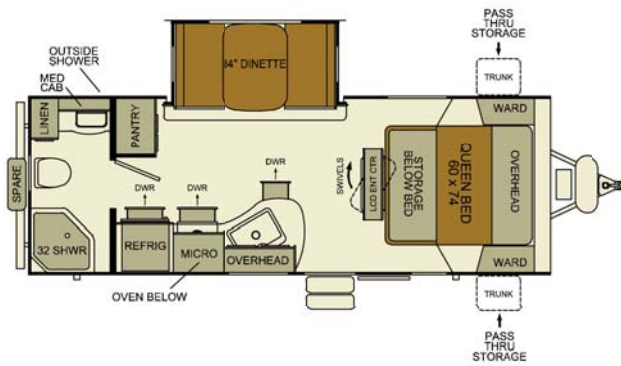
Reliving the thrills of the day inside a comfortable, well-equipped coach is almost as important as the outdoor experiences themselves. Apart from its upscale amenities, i-Go comes with slide-outs that are six inches deeper than the competition, opening up lots of living space. Need more room? Ask your dealer about the new eight-foot-wide i-Go models now available.

Deeper, 42-inch slide-outs, six inches deeper than the competition, provide a more spacious and comfortable interior.

The well-crafted, solid wood cabinets are screwed and glued—never stapled—with solid wood panels.



Wardrobes with reading lights surround the queen bed with innerspring mattress. Gas struts provide easy access the storage area under the bed.



MODEL G220RB

Total Dry Weight (UVW)	4,650
Dry Hitch Weight (LBS)	495
GVWR (LBS)	5,995
Fresh Water Capacity (GAL)	36
Gray Water Tank Capacity (GAL)	29
Black Water Tank Capacity (GAL)	29
LP Capacity (LBS)	40
Cargo Carrying Capacity (LBS)	1,046
Overall Length	25' 6"
Height (including A/C)	10' 8"
Width	7' 7"
Bed Size	60" x 74"
Power Awning Length	15'
Tire Size	ST205/75R14-C

MODEL G221RB

Total Dry Weight (UVW)	4,650
Dry Hitch Weight (LBS)	495
GVWR (LBS)	5,995
Fresh Water Capacity (GAL)	36
Gray Water Tank Capacity (GAL)	29
Black Water Tank Capacity (GAL)	29
LP Capacity (LBS)	40
Cargo Carrying Capacity (LBS)	1,046
Overall Length	25' 6"
Height (including A/C)	10' 8"
Width	7' 7"
Bed Size	60" x 74"
Power Awning Length	15'
Tire Size	ST205/75R14-C

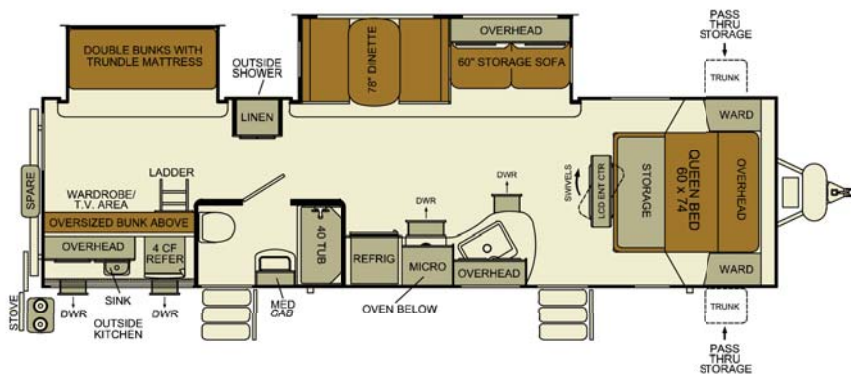
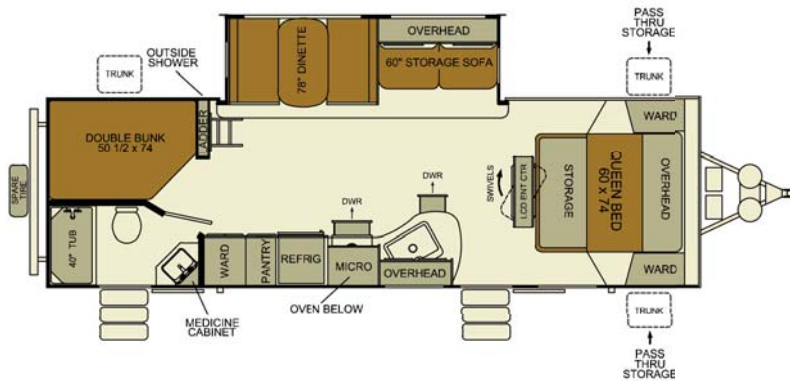
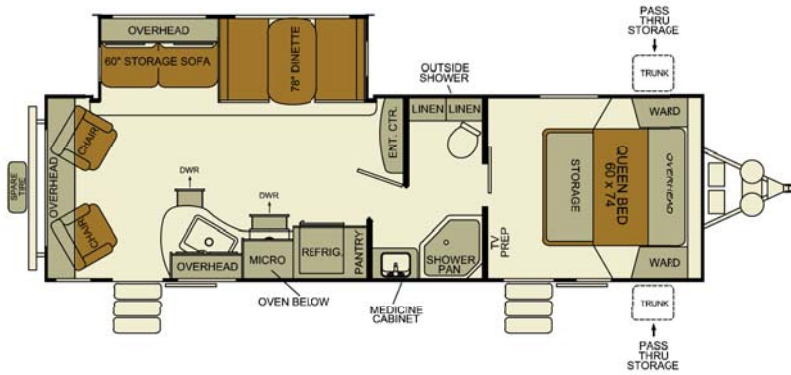
MODEL G236RBK

Total Dry Weight (UVW)	4,841
Dry Hitch Weight (LBS)	589
GVWR (LBS)	6,295
Fresh Water Capacity (GAL)	36
Gray Water Tank Capacity (GAL)	29
Black Water Tank Capacity (GAL)	29
LP Capacity (LBS)	40
Cargo Carrying Capacity (LBS)	1,055
Overall Length	26' 4"
Height (including A/C)	10' 8"
Width	7' 7"
Bed Size	60" x 74"
Power Awning Length	14'
Tire Size	ST205/75R14-C

MODEL G239BH

Total Dry Weight (UVW)	4,820
Dry Hitch Weight (LBS)	515
GVWR (LBS)	6,295
Fresh Water Capacity (GAL)	36
Gray Water Tank Capacity (GAL)	29
Black Water Tank Capacity (GAL)	29
LP Capacity (LBS)	40
Cargo Carrying Capacity (LBS)	1,176
Overall Length	27' 3"
Height (including A/C)	10' 8"
Width	7' 7"
Bed Size	60" x 74"
Power Awning Length	16'
Tire Size	ST205/75R14-C

*Estimated weights. Specifications subject to change.



MODEL G256BH

Total Dry Weight (UVW)	5,108
Dry Hitch Weight (LBS)	593
GVWR (LBS)	6,495
Fresh Water Capacity (GAL)	36
Gray Water Tank Capacity (GAL)	29
Black Water Tank Capacity (GAL)	29
LP Capacity (LBS)	40
Cargo Carrying Capacity (LBS)	1,088
Overall Length	28' 10"
Height (including A/C)	10' 8"
Width	7' 7"
Bed Size	60" x 74"
Power Awning Length	17'
Tire Size	ST205/75R14-C

MODEL G281RLDS

Total Dry Weight (UVW)	TBD
Dry Hitch Weight (LBS)	TBD
GVWR (LBS)	TBD
Fresh Water Capacity (GAL)	50
Gray Water Tank Capacity (GAL)	58
Black Water Tank Capacity (GAL)	29
LP Capacity (LBS)	40
Cargo Carrying Capacity (LBS)	TBD
Overall Length	32'-5"
Height (including A/C)	11'-1"
Width	8'
Bed Size	60"x74"
Power Awning Length	20'
Tire Size	ST225/75R15-D

MODEL G282BHDS

Total Dry Weight (UVW)	TBD
Dry Hitch Weight (LBS)	TBD
GVWR (LBS)	TBD
Fresh Water Capacity (GAL)	50
Gray Water Tank Capacity (GAL)	29
Black Water Tank Capacity (GAL)	29
LP Capacity (LBS)	40
Cargo Carrying Capacity (LBS)	TBD
Overall Length	32'
Height (including A/C)	11'-1"
Width	8'
Bed Size	60"x74"
Power Awning Length	16'
Tire Size	ST225/75R15-D

MODEL G318BHS

Total Dry Weight (UVW)	*6,315
Dry Hitch Weight (LBS)	1,056
GVWR (LBS)	7,995
Fresh Water Capacity (GAL)	36
Gray Water Tank Capacity (GAL)	29
Black Water Tank Capacity (GAL)	29
LP Capacity (LBS)	40
Cargo Carrying Capacity (LBS)	1,381
Overall Length	35' 7"
Height (including A/C)	11' 1"
Width	8'
Bed Size	60" x 74"
Power Awning Length	16'
Tire Size	15"

*Estimated weights. Specifications subject to change.



Standard Features

Construction

- Steel I-beam frame
- Vacuum-laminated sidewalls, roof and floor
- ComposiTek™ inner liner on interior walls and ceiling
- Tough fiberglass reinforced exterior
- Fully welded DuraLite aluminum framed sidewalls, roof and floor includes window framing
- Crowned roof fully laminated with white, reflective TPO material
- Protective enclosed underbelly

Exterior

- Automotive style, frameless windows with dark tint
- Porch light
- 14 or 15-inch radial, nitro-filled tires with steel rims
- Outside shower
- Exterior speakers
- Four, frame-mounted stabilizer jacks
- Awning
- Radius entry door with large grab handle
- Large pass-through storage
- Designer graphics
- Double entry steps
- Spare tire and kit with cover

Utilities

- Six-gallon gas/electric direct spark ignition water heater
- Detachable powercord
- (2) 20-pound LP tanks with hard cover
- Exterior LCD TV hook up with bracket, cable hookup
- Furnace

- Ducted roof A/C
- TV antenna and booster
- Electronic tank readout
- Water pump with winterizing inlet
- Fire extinguisher, carbon monoxide detector, smoke alarm
- Gear-driven 4-point slide-out system

Kitchen

- Padded 'No Crack' vinyl flooring
- Large kitchen window with blind
- Full-size composite sink with cover and gooseneck faucet
- Screwed and glued solid wood cabinetry
- Microwave
- Three burner range
- Double door refrigerator/freezer

Living

- Entertainment center
- AM/FM/DVD/CD, with USB/SD port
- Ceiling speakers

Bath

- Foot flush toilet
- Full tub/or neo-angled shower
- Skylight over shower/tub
- Large medicine cabinet and mirror
- Towel hooks
- Power exhaust fan

Bedroom

- Queen bed with inner spring mattress
- Under-bed storage with lift struts
- Bed spread, headboard
- Dual wardrobe

Options

- 15K BTU Air Conditioner
- 15K Low Pro A/C (220, 221, 239, 236 only)
- 50AMP Service w/2nd AC Prep (318 only)
- 28" TV
- 32" TV (N/A 221)
- Hide-A-Bed (256, 281, 282, 318 only)
- Aluminum Wheels
- Dual Pane Windows
- E Cube Game Chairs-ipo lower bunk (318)
- Power Awning
- Power Tongue Jack
- Shower Enclosure
- Tankless Water Heater
- Outside Grill
- Murphy Bed (221, 236 only)
- Power Stab Jacks Front & Rear

Optional Executive Package

- Power awning
- Aluminum Wheels
- Solid surface Corian™ countertops in the kitchen

"Peace of Mind" Warranty

We're so confident in our quality that we're willing to stand behind our travel trailers and fifth-wheels with one of the best warranties in the industry.

- 1-Year Limited Warranty
- 3-Year Limited Structural Warranty*
- 12-Year Roofing Materials Warranty
- 1-Year Free Roadside Assistance Program

*Contact your EverGreen dealer for an applicable copy of all limited warranties

*Product and specifications subject to change without notice



Mineral Decor



Sienna Decor

Compliments of:



See i-Go On YouTube!



CSA Z240 Code Compliance and Certification



1st Green Certified RV Manufacturer