

Let's hit the trail.



TRAVEL TRAILER



FIFTH WHEEL

STARCRAFT

CAMPING | *pure and simple.*

2010 HOMESTEAD® | FIFTH WHEELS AND TRAVEL TRAILERS BY STARCRAFT®

Stake your claim.



319FBH / Autumn

The 2010 Homestead is your home away from home, no matter how far your travels may take you. Designed for relaxation, convenience and supreme value, the Homestead is a comfortable retreat for you and your loved ones. With a combination of high-quality construction techniques, amenities and finishing touches, you're certain to enjoy it for years to come.

294RL / Slate



DURABILITY

Homestead is built for the long haul, with all-weather roofing, smooth Filon® exterior finish and welded tubular aluminum sidewall framework.



TOWABILITY

New for 2010: the Homestead travel trailer, with many of the same amenities of home but much lighter and easier to tow.



SIMPLICITY

With Homestead, you'll never pay for features and gadgets you'll never use. Our campers are built for camping. Nothing more, and nothing less.

Stay awhile.

Homestead's expandable, comfortable and convenient floorplans make it easy to visit friends and family for a weekend, a week or an extended period of time. No matter how long you stay, you'll feel right at home, thanks to Homestead's expansive bedroom, spacious living areas, large bathroom and ample storage space. With modern appliances like a three-burner range, refrigerator and microwave, you'll never miss a home-cooked meal.



319FBH / Autumn

Homestead's contemporary bathroom features a large sink, glass shower door, medicine cabinet and skylight.



319FBH / Autumn

You'll feel right at home in Homestead's comfortable bedroom with an innerspring mattress, quilted bedspread and matching pillows.



294RL / Slate

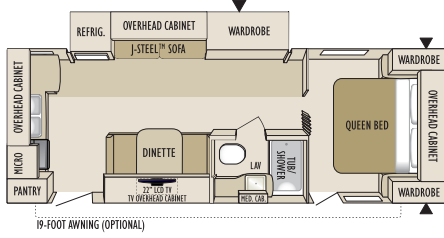
There's plenty of room to prepare and enjoy a delicious meal in Homestead's kitchen area, with modern appliances and seating for the whole family.

FLOORPLANS

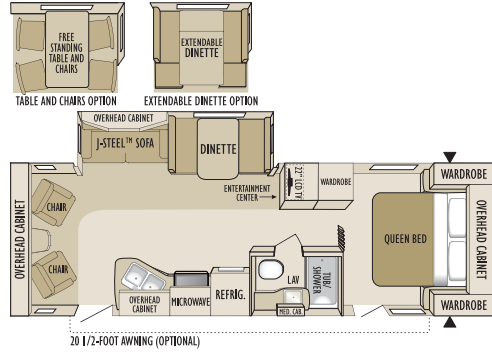
◀ = outside storage
LAV. = bathroom sink

MICRO. = microwave
OHC. = overhead cabinets

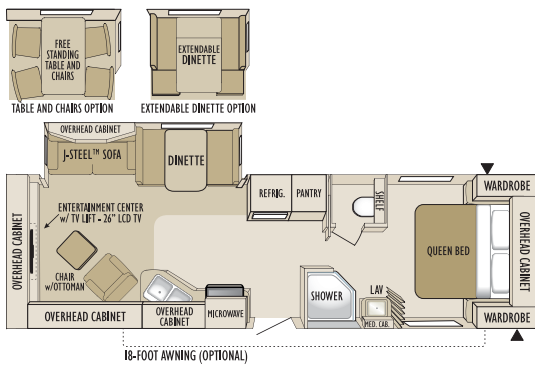
REFRIG. = refrigerator
WARD. = wardrobe



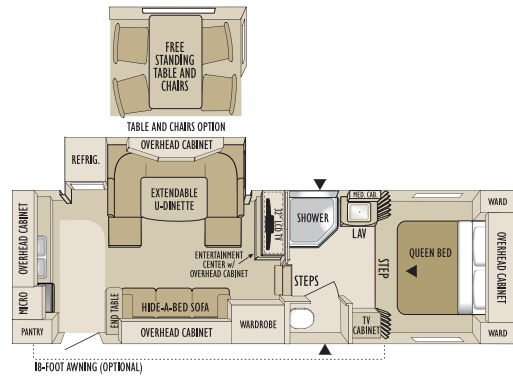
Travel Trailer 254RK



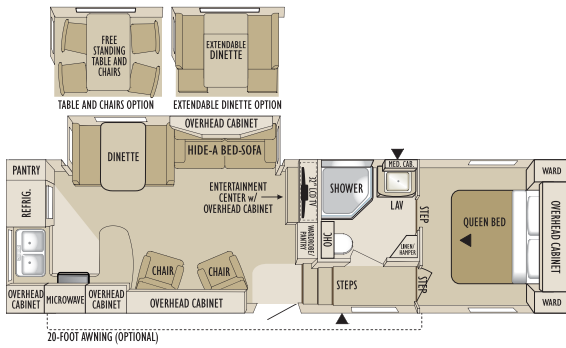
Travel Trailer 294RL



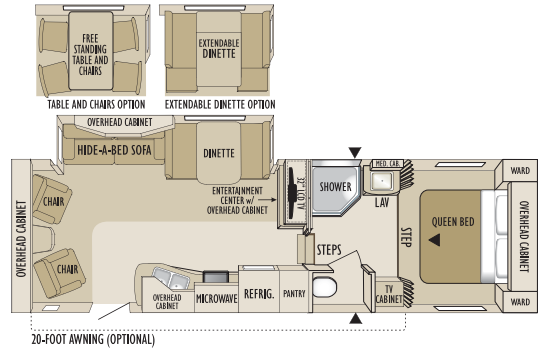
Travel Trailer 314RE



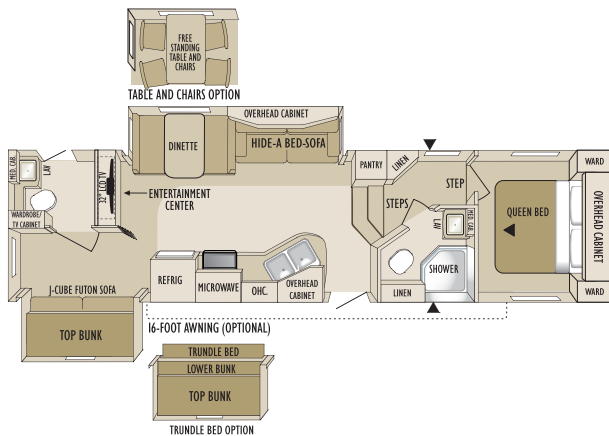
Fifth Wheel 256RKU



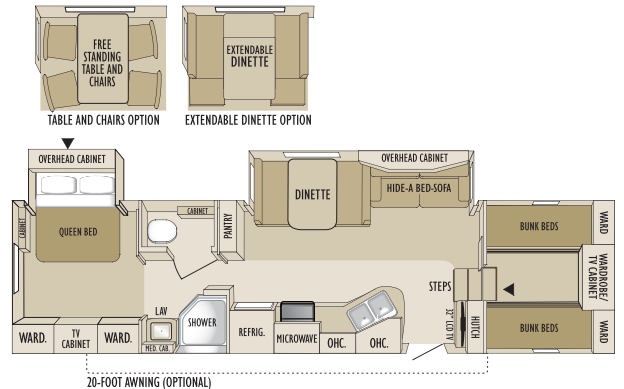
Fifth Wheel 295RKSA



Fifth Wheel 295RL



Fifth Wheel 308RBSA



Fifth Wheel 319FBH

STANDARDS AND OPTIONS

◆ HOMESTEAD TRAVEL TRAILERS
◆ HOMESTEAD FIFTH WHEELS

◆ HOMESTEAD TRAVEL TRAILERS
◆ HOMESTEAD FIFTH WHEELS

◆ HOMESTEAD TRAVEL TRAILERS
◆ HOMESTEAD FIFTH WHEELS

STANDARD BATHROOM EQUIPMENT

◆	Bar and towel ring
◆◆	Glass shower door (select models)
◆◆	Marine toilet with foot flush
◆◆	Medicine cabinet with mirror
◆◆	Residential 6-panel passage door
◆	Shower curtain with curved shower track (select models)
◆	Skylight in tub/shower (select models)
◆	Switches for all lights
◆◆	Toilet paper holder
◆	Towel holder
◆◆	Towel ring
◆◆	Vinyl flooring

STANDARD BEDROOM EQUIPMENT

◆	312-coil innerspring mattress
◆	Accordion door to bedroom (select models)
◆	Coordinated, quilted bedspread
◆	Decorative headboard
◆	Decorative reading lights
◆	Hardwood decorative headboard with bookshelf (n/a 319FBH)
◆	Innerspring mattress
◆	Large pass-through storage
◆	Laundry hamper
◆	Privacy curtains (select models)
◆◆	Roof vent
◆	Shirt wardrobe
◆	TV cabinet (select models)
◆◆	Under-bed storage, bed lifts easily on gas struts

STANDARD KITCHEN EQUIPMENT

◆◆	3-burner range with 9,000-BTU SuperBurner™ and piezo igniter
◆◆	6-cu. ft. flush-mount refrigerator
◆◆	Brown Sugar raised-panel refrigerator front
◆◆	Color-coordinated countertops
◆	Deep storage drawer under booth dinette seat
◆	Deep storage drawer under booth dinette seat, door on other dinette seat
◆◆	Drawer for silverware, divided for utensils
◆◆	Dream Dinette™ mechanism, raises and lowers dinette table top
◆◆	Extra large picture window at dinette
◆◆	High-rise mixing faucet
◆	Mini blind
◆	Oversized 21" oven
◆◆	Range hood with light and exhaust fan
◆	Sink cover/cutting board (1)
◆◆	Silver, residential-style, double-bowl kitchen sink
◆	Sponge holder under sink
◆	Wallpaper border

STANDARD CONSTRUCTION FEATURES

◆◆	4-1/2" arched truss roof rafters with R-7 insulation
◆	81" ceiling height
◆	Aerodynamic wrap-around front fiberglass cap
◆◆	Bead-foam insulation (R-7 sidewalls, R-9 floor)
◆◆	Electric-powered slideout
◆	Foil insulation in roofs and slideout floors
◆◆	FRP smooth fiberglass sidewall exteriors
◆◆	Fully-decked roof with 3/8" plywood

◆	Heated and enclosed fresh water tank and holding tanks
◆◆	I-Class® cambered structural-steel I-beam frame
◆	Pin box, long
◆	Platforms for dinette, bed and bunks, constructed of 1/2" plywood
◆◆	Poly Flex™ one-piece covering for underbelly
◆◆	Seamless one-piece rubber roof
◆◆	TuffShell™ vacuum-bonded laminated sidewall and floor
◆◆	Welded tubular aluminum floor and sidewall frame work

STANDARD EXTERIOR EQUIPMENT

◆	2-5/16" hitch coupler
◆◆	15" radial tires
◆	ABS fender skirt
◆	Adjustable axle hangers
◆	Aerodynamic front profile
◆◆	Amber patio lights with inside switch
◆◆	Baggage doors, lockable, insulated and radius-cornered
◆◆	Big Easy™ entrance step with 10" deep treads
◆	Bike rack/cargo tray system
◆◆	Bumper with drain hose carrier and end caps
◆◆	Chrome hub caps
◆	Durable fender skirts
◆	Electric-powered front jacks
◆◆	Exterior speakers, high-output marine-grade (2)
◆◆	E-Z Lube® axles
◆◆	Foldable, exterior grab handle
◆	Front jacks with quick-release pins
◆◆	Galvanized-steel wheel wells
◆◆	MOR/ryde® CRE 3000 axle equalizers
◆	Outdoor media center
◆◆	Molded rain guttering with drip spouts
◆◆	Painted bottom radius skirting
◆	Pass-through storage compartment
◆◆	Prep for outside grill
◆◆	Polished aluminum wheels
◆	Rear stabilizer jacks
◆◆	Roof ladder
◆◆	Screened egress bunk windows
◆	Security light, door side
◆	Spare tire with carrier
◆◆	White-framed radius fiberglass main entry door

STANDARD INTERIOR EQUIPMENT

◆	22" LCD HDTV in living area
◆	26" LCD HDTV in living area (304RE)
◆	32" LCD HDTV in living area
◆◆	Ball bearing drawer guides 50-lb. capacity with full-drawer extension
◆	Brown Sugar raised-panel doors and drawers in kitchen and living area
◆	Brown Sugar raised-panel doors and drawers throughout
◆◆	Cable and satellite TV prepped
◆◆	Crank-up HDTV antenna with signal booster
◆	Decorative nickel lighting over sofa and dinette
◆	Fabric-covered box valances with lambrequin legs
◆	Hardwood message center (select models)
◆	Hide-a-bed sofa
◆	J-Steel® convertible sofa
◆◆	Linoleum floor in entryway
◆	Nickel cabinet hardware
◆	Nickel cabinet hardware and decorative lighting
◆	Overhead cabinets in slideout room

◆	Overhead cabinets in slideout room above sofa
◆◆	Pleated night shades
◆◆	Residential furniture, designed and made by Starcraft®
◆◆	Rocker recliner(s) (select models)
◆◆	Roof-mounted antenna for radio
◆	Solid hardwood interior grab handle for main entrance door
◆	Swivel rocker(s) (select models)
◆◆	Trackless carpeting with pad
◆	Vinyl flooring
◆◆	Wallpaper border

STANDARD HEAT, POWER AND WATER EQUIPMENT

◆	6-gal. gas/electric DSI auto-ignition water heater
◆◆	12V demand water pump
◆◆	12V electrical system with deluxe 120V 45-amp power converter
◆◆	30-amp power cord
◆◆	120V G.F.C.I. protected exterior receptacle
◆◆	A/C Chillgille™
◆◆	ABS holding tanks
◆◆	Auto-ignition furnace with wall thermostat
◆	Battery box for two batteries
◆	Black holding tank sprayer
◆	Double 30-lb. propane gas bottles, with auto regulator
◆	Gravity fill for water
◆◆	Hookup for city water
◆◆	In-floor ducted heating
◆	Outside shower
◆	Rotocast fresh water holding tanks
◆◆	Systems monitor panel
◆	Water heater bypass system
◆◆	Water system winterization kit

STANDARD SAFETY EQUIPMENT

◆◆	Breakaway switch
◆	Dual hitch safety chains
◆◆	Deadbolt lock on entrance door
◆◆	Egress window
◆◆	Fire extinguisher
◆◆	Propane/carbon monoxide alarm
◆◆	Smoke alarm
◆◆	Tinted safety-glass windows

OPTIONS

◆	Bedroom carpet
◆◆	Canadian standards
◆◆	Customer Convenience Package
◆◆	Customer Convenience Package with 15,000-BTU A/C
◆◆	Extendable dinette (select models)
◆◆	Free-standing table with 4 chairs (select models)
◆	Hide-a-bed (n/a 254RK)
◆	Linoleum in living area (n/a 319FBH)
◆	Outside grill
◆	Reese® Revolution™ pin box
◆	Rocker recliners (2) in lieu of swivel rockers (2) (294RL)
◆	Satellite kit
◆	Spare tire with carrier and cover
◆	Trundle bed in lieu of futon (308RBSA)
◆	Water purifier

CUSTOMER CONVENIENCE PACKAGE

- ◆ 6-gal. gas/electric DSI auto-ignition water heater
- ◆◆ 13,500 or 15,000-BTU A/C with wall thermostat and louvered directional ceiling vents
- ◆ ABS gas bottle cover
- ◆◆ ABS tub surround
- ◆◆ Bathroom power vent

- ◆◆ Bi-fold range cover
- ◆◆ Carefree® Travel®™ 12V electric patio awning
- ◆◆ Double 30-lb. propane gas bottles with regulator
- ◆◆ Microwave oven with carousel
- ◆◆ Multi-Media Premium Sound System™ AM/FM/CD/DVD stereo with MP3 and iPod® input jack
- ◆ Outside shower
- ◆ Oversized oven

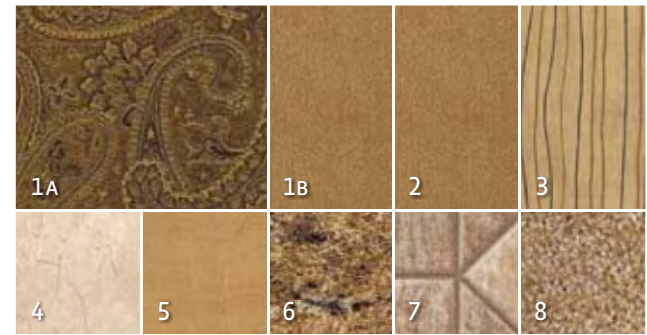
- ◆ Quilted bedspread
- ◆ Shirt wardrobes in bedroom
- ◆ Sink cover/cutting board
- ◆ Skylight in tub/shower
- ◆ Stabilizer jacks (2 pairs)
- ◆ Water heater bypass system

DÉCOR

STEEL



AUTUMN



SLATE



WOOD OPTION



- 1 Sofa (two-tone) and accent fabric
- 2 Chair
- 3 Bedspread
- 4 Wall panel
- 5 Drapery
- 6 Countertop
- 7 Flooring
- 8 Carpet

SPECIFICATIONS

	Floorplan	Exterior Length	Exterior Height w/AC	Interior Height	Unloaded Vehicle Weight (lbs.)	Dry Hitch Weight (lbs.)	Gross Vehicle Weight Rating (lbs.)	Cargo Carrying Capacity (lbs.)	Fresh Water Capacity (gal.) (includes water heater)	Gray Waste Water Capacity (gal.)	Black Waste Water Capacity (gal.)
TRAVEL TRAILER	254RK	28' 2"	133"	81"	5,755	705	7,500	1,745	36.5	65	32.5
	294RL	31' 3"	133"	81"	6,190	810	7,950	1,760	36.5	32.5	32.5
	314RE	33' 5"	132"	81"	TBD	TBD	7,950	TBD	36.5	65	32.5
FIFTH WHEEL	256RKU	28' 11"	151"	77"	7,670	1,380	10,000	2,330	46	65	32.5
	295RKSA	31' 11"	150"	72"	8,150	1,635	10,700	2,550	49	65	32.5
	295RL	30' 11"	150"	77"	7,935	1,550	10,200	2,265	49	65	32.5
	308RBSA	34' 2"	153"	72"	9,095	1,595	11,400	2,305	46	65	65
	319FBH	34' 5"	151"	68"	8,785	1,750	11,200	2,415	46	65	32.5

Unloaded Vehicle Weight (UVW): Sometimes referred to as "Dry Weight," UVW means the typical weight of this trailer as built at the factory. The UVW, as used in product literature and other promotional materials, does not include cargo, fresh water, propane, options or dealer-installed accessories.

Gross Vehicle Weight Rating (GVWR): GVWR means the maximum permissible weight of the trailer, including the UVW plus passengers, personal items, all cargo, fluids, options, and dealer-installed accessories. The GVWR is equal to or greater than the sum of the UVW and the CCC.

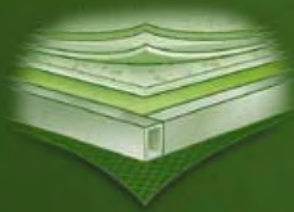
Cargo Carrying Capacity (CCC): CCC means the maximum weight of all passengers, personal items, food, fresh water, propane, tools, other cargo and dealer-installed accessories that can be carried by the trailer. CCC is equal to or less than GVWR minus UVW. The addition of options will decrease the CCC.

Hitch Weight (HW): The hitch weight, as used in product literature and other promotional materials, does not include cargo, fresh water, propane gas, options or dealer-installed accessories. The addition of these types of items will either add to or subtract from the stated hitch weight.

It is important for your safety and enjoyment that your tow vehicle be adequately sized and equipped to tow and handle the GVWR of the RV you select. Review weights and rating of your tow vehicle and consult a competent advisor for questions or advice. Whether you are new to RVing or a veteran, get a feel for the performance of your tow vehicle and the RV together before heading out on the roadways. When you tow an RV, you must drive differently than you do when driving a single vehicle. Practice hooking up, driving, backing up and braking in a safe environment or seek out professional instruction. Starcraft affixes a weight label to each RV which lists weight information for that vehicle. See specification chart above.

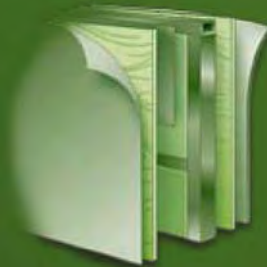
Built right.

We built our reputation making affordable, reliable and durable campers with an Amish-inspired attention to detail. We use the highest-quality materials available, state-of-the-art production techniques and time-tested design principles. Because the last thing you need to worry about when you're camping is your camper.



FLOOR

Because a camper is only as strong as its foundation, we vacuum-bond a welded tubular aluminum frame and $\frac{3}{8}$ " plywood to create one of the industry's strongest floors.



WALLS

Our walls combine TuffShell™ vacuum-bonding with welded aluminum frames and metal backers to create a durable structure designed to handle the toughest conditions.



ROOF

The combination of 4- $\frac{1}{2}$ " arched wood rafters, $\frac{3}{8}$ " Structurwood® decking, fiberglass insulation and a one-piece seamless rubber membrane give our roof the strength to fight off aging, moisture.

Built on tradition.


The Starcraft name has been around for more than 40 years – becoming one of the most dependable names in the camping industry. Today, our strong balance sheet and family-oriented business approach means we'll be around for decades to come. And you can bet our campers will continue to come with everything you need to have a great time in the great outdoors, at a price that guarantees you will.

Why a Local Starcraft Dealer is Important to You

Establishing a solid relationship with your local Starcraft dealer is a key component in the enjoyment of your new Starcraft. By purchasing from a local dealer, you will have a convenient location for sales, parts and service support.

One-year warranty

The Starcraft warranty is a manufacturer's limited warranty. Each Starcraft is warranted to the original purchaser for twelve (12) months from the original date of purchase against defects in materials and workmanship. Starcraft's limited warranty is not transferable. For a copy of the limited warranty with full terms and conditions, ask your local Starcraft dealer.

Starcraft RV • PO Box 460 • Middlebury, IN 46540 
www.starcraftcamping.com

See dealer for further information and prices. All information in this brochure is the latest available at the time of publication approval. Starcraft reserves the right to make changes and to discontinue models without notice or obligation. Photos in this brochure may show optional equipment and props for photography purposes. RV's built for sale in Canada may differ to conform to Canadian codes.

©2010 Starcraft RV 10-HSTD - PL - 0909- 50K Printed in USA.

STARCRAFT

CAMPING | pure and simple.