

# Excel

2010  FIFTH WHEELS





The Limited line is designed to incorporate all our most advanced features into a single, premium-quality fifth wheel. It is the RV equivalent of a dream home — luxurious, well appointed and packed with amenities! Standard features include many extras that would be options (or not even available) on other models: A new generation hydraulic extension system for slide-outs and jacks, 32" HD LCD television, a china toilet, LED taillights and dozens of other luxury touches. The Limited even has a pillowtop mattress with box springs – a first for the RV industry.



Like a nice home in an upscale neighborhood, the Classic is designed to be more affordable while maintaining comfort. Consequently, the Classic uses a number of proven features and systems that are equally as reliable, but not quite as luxurious and "cutting-edge" as those of the Limited. For example, the jacks are electric (though the slide-out rooms feature new generation hydraulics) and many of the luxury touches that are standard in the Limited are optional features in the Classic.



The RT has a different user in mind. It's designed for the Trekker crowd who tend to leave the beaten path when searching for outdoor recreation. The engineering emphasis is on designing a frame and suspension system that allow the RT to be pulled over rougher roads and into less civilized camping sites. In addition, the Excel RT stands head and shoulders above competing coaches in the same price range. The construction techniques and materials that go into the RT are of the same high quality as our Classic and Limited. The difference between the RT and its competitors is the structural engineering emphasis on rugged and value-priced features.



The Wild Cargo allows travelers to take their action with them wherever they go. A spacious cargo area with rear garage entry or optional side entry easily accommodates a 4-wheeler, golf cart, snowmobile, motorcycles or other equipment. "E-track" cargo tie-downs, aluminum framed ramp door, easy-clean commercial grade flooring and optional patio screen lends convenience and cleanup ease. A relaxing living area features a double-sized loft bed, slide outs, and plush master suite with queen-sized bed and enclosed bath. A hinged 32" HD-LCD television can be viewed in either the living area or garage!

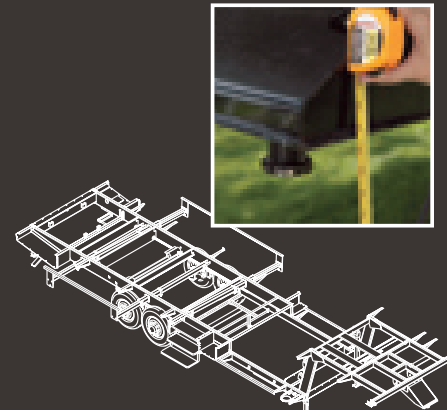


WELCOME!

## OUTSTANDING CONSTRUCTION SETS US APART



- Wood frame construction is especially beneficial to full-timers because of its strength, durability, and comfort.
- Full 5/8" plywood floors are sturdy, quiet, and give your home a solid base.
- Heated basement area protects under-floor systems and stored items from weather extremes.
- Exclusive "Walk-Anywhere" one-piece seamless rubber roof (Excel RT & Classic) and molded gel-coated fiberglass roof (Limited) are not only easy to maintain, but provide an exceptional barrier against the elements.
- Gel-coated fiberglass exterior gives your Excel a beautiful, easy-to-clean, durable outer skin that is virtually impervious to the elements.



- 2" x 4" tapered roof design provides outstanding run-off – shedding rain and snow more effectively and completely than flat roofs.
- R10 sidewall insulation and R17 floor and roof insulation help keep the coach cozy in winter and cool in summer, while also saving on heating and cooling costs.
- Standard pin height is 43½".
- Our exclusive "Drop Z" frame design provides a lower center of gravity for easy towing stability and more useful basement storage. We use a box tube frame for unbeatable strength and durability.

## UNBEATABLE WARRANTIES

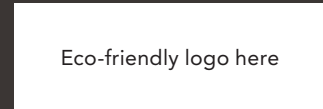


With Excel's Minus Ten Degree Guarantee, you can be sure your holding tanks, watertank, interior water lines and other essential plumbing won't freeze – all the way down to minus ten degrees!\*

\* See your dealer for complete explanation of product warranties. The Minus Ten Degree Guarantee is in effect on all 2008 and later models with optional Thermopane windows installed. Furnace must be in operation for guarantee to be in effect.



Excel's 2-Year Limited Warranty is your guarantee that, in the unlikely event something goes wrong with your Excel fifth wheel, we'll fix it. It's that simple. We have so much confidence in our quality workmanship and attention to detail that we'll stand behind our products in every way for a full two years after its original purchase.



Peterson Industries has been recycling materials in our manufacturing plant for over a decade; using scrap material from door and window cutouts for use on our exterior access doors. In addition, we use eco-friendly print processes to produce our brochures and print materials.



The 36GKE features a standard 42" auto-lift HD LCD television.



## LAVISH LUXURY

The Excel Limited is a world unto itself – a luxurious five-star hotel on wheels. Elegant comfort comes standard, with solid wood cabinetry, berber style carpeting, 32" HD LCD television and recessed halogen lighting. Nineteen wide-open floorplans feature abundant options including king bedroom suites, padded ceilings and cherry-stained wood cabinetry. New-generation hydraulic slide-outs and jacks give you ultra-smooth operation for the ultimate in ease and convenience. And our optional Hydralift carrier, available on 33' models and shorter, allows you to take your motorcycle wherever you go.

Stylish graphics and optional painted exterior provide a classic look you can be proud of for many years to come.



Floorplan 36GKE



LIMITED

# THE ULTIMATE IN COMFORT



- A** 32" HD LCD televisions give you maximum entertainment in a minimum of space.
- B** Long-lasting and ultra-bright LED tail lights are easier to see and are virtually maintenance free.
- C** A new standard feature, the grandfather clock, hides the slide-out switches and features hooks for all your keys. (Not available in all floorplans.)
- D** Standard bathroom amenities feature style and functionality, with skylights, coordinated fixtures and an efficient 16 gallon output water heater, standard on every Limited model.
- E** Stacked washer/dryer units in the bathroom are attractive options for snowbirds and fulltimers.
- F** Solid surface flush mount range cover cleverly increases your work space.
- G** Your dreams will be sweet indeed with our exclusive pillowtop mattress and box springs set.



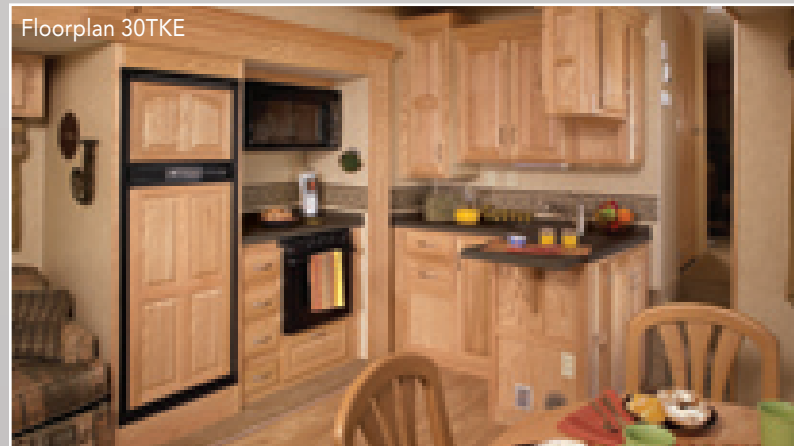
Enjoy our standard warm oak cabinetry, or upgrade to the richness of our Brazilian cherry-stained maple or our new hickory finish.



There's quality underfoot! We feature Residential Laminate Flooring.



Toughstone composite countertops in the "canyon" color come standard with all three wood finishes.



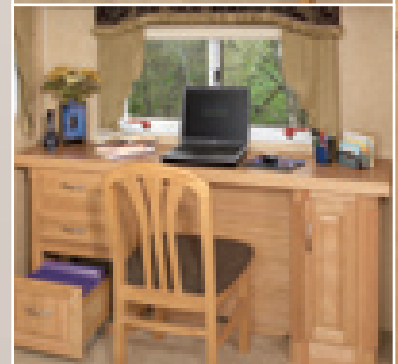
Floorplan 30TKE



LIMITED



CLASSIC



### CLASSIC COMFORT

The Excel Classic is a true home away from home. Smart design, a warm and inviting decor and intelligent storage provide just what you need to escape the stresses of everyday life in comfortable style. New-generation hydraulics on every Excel Classic provide smooth and trouble-free operation for each slide-out. Standard amenities include a convection oven, oak-framed cabinet doors, 32" High Definition LCD television and beautifully durable berber-style carpeting. Available options provide every creature comfort, including a stacked washer/dryer, central vacuum system, king bedroom suite and innovative "dual desk table" (above right).



Floorplan 33RSO

# OUR INNOVATION NEVER STOPS

Whether it's developing new design details, creating storage solutions or adding strength and durability, Excel is committed to continual improvement. Our commitment to quality is why we are a top-rated manufacturer in the RV industry.



- A** Satin nickel faucet
- B** Gel-coated access doors are a full 1-3/8" thick
- C** Shower skylight
- D** Exterior lawnchair storage (most models)
- E** Deep, roomy drawers
- F** Increase your counter space with this pull-up countertop extension (most models)
- G** Pull-out pantry provides easy access and visibility while maximizing storage space.
- H** Features such as custom moldings and etched glass showcase the meticulous detail and craftsmanship devoted to every Excel coach.



CLASSIC





## RUGGED STYLE

If your idea of adventure involves a rough road and scenic seclusion, the Excel RT can get you there in fine style. With a frame and suspension specifically engineered to withstand a more rugged terrain, the RT's efficient and sturdy interior stands up to whatever your adventure dishes out without sacrificing the comforts of home. Comfortable furniture and efficient floorplans add a homey feel to behind-the-scenes engineering features like our box tube (not I-beam) Drop Z frame, 1-3/8" access doors, gel-coated exterior and heavy-duty chassis.

Our Minus 10 Degree Guarantee means the RT will be heading out long after its competitors have been stored for the season.



RT

Floorplan 28RKW



Floorplan 28RKW  
with optional hide-a-bed sofa



You'll feel right at home while getting away from it all in an interior designed for relaxing. The RT offers ten different floorplans to accommodate every travel need and style preference. Standard sofas fold out to provide additional sleeping options for overnight guests. Thoughtful planning maximizes storage and creates a sense of space. From front to back, the RT is designed for efficiency, comfort, ease of maintenance and exceptional value.



RT



# WILD CARGO

## TAKE A RIDE ON THE WILD SIDE!

Excel's Wild Cargo toy hauler brings the action with you wherever you go. A spacious cargo area easily accommodates a 4-wheeler, golf cart, snow mobile, two motorcycles or other equipment. Heavy-duty tie down rings and an easy-open aluminum framed ramp door provide security and accessibility. Optional built-in generator and 30-gallon fuel cell provide worry-free camping in remote areas. Commercial grade rubberized flooring makes cleanup quick and easy, and an optional pull-down patio screen keeps the bugs out.

The interior is designed for relaxing, with roomy slide-outs in the kitchen and living area, and comfortable master suite with a queen-sized bed and enclosed bath. A new Sleep 'n Sit option in the cargo area accommodates your guests with a double-sized loft bed, and another bed that converts to a couch. Both can be raised to the ceiling when they aren't in use to expand your living space.

Other Excel features rarely found in other SURVs are the standard Eurochair/recliner, optional washer/dryer, and hinged 32" HD LCD television that can be viewed in either the living area or garage! Every inch of Excel's new Wild Cargo is built for your fun-loving and action-packed lifestyle.

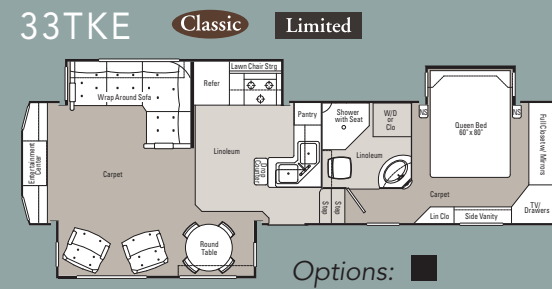
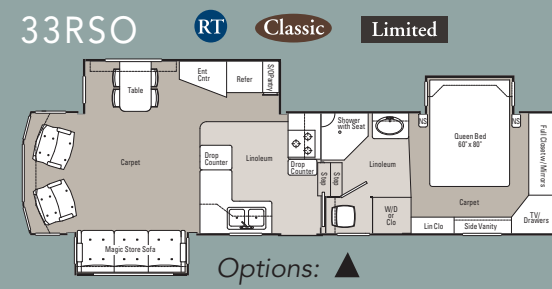
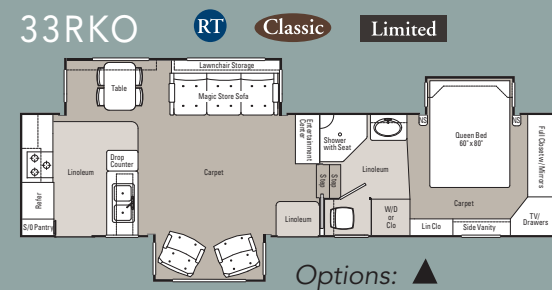
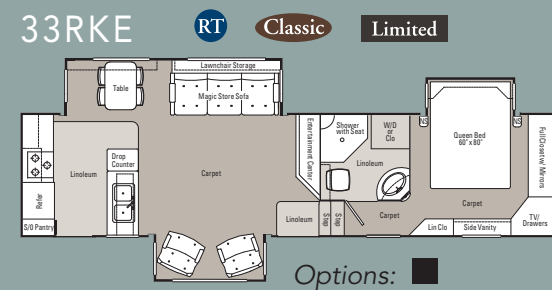
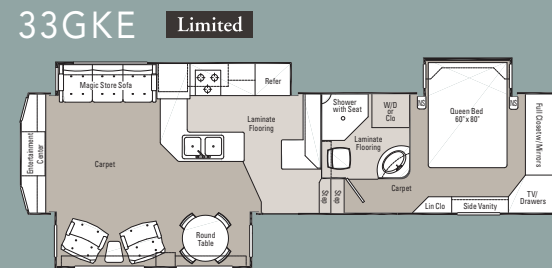
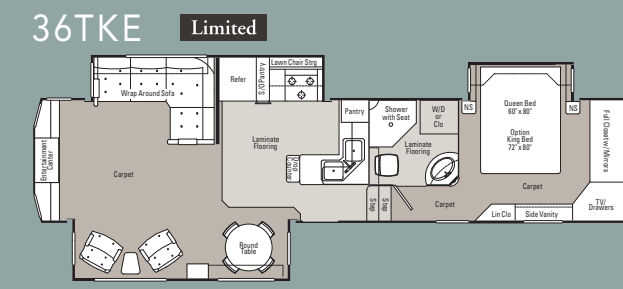
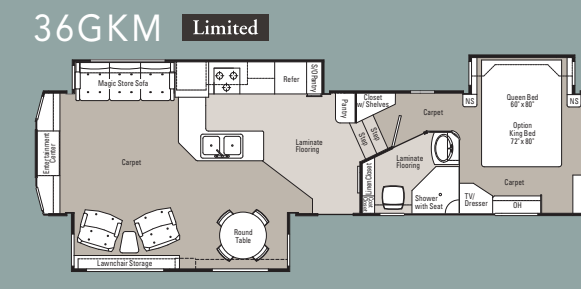
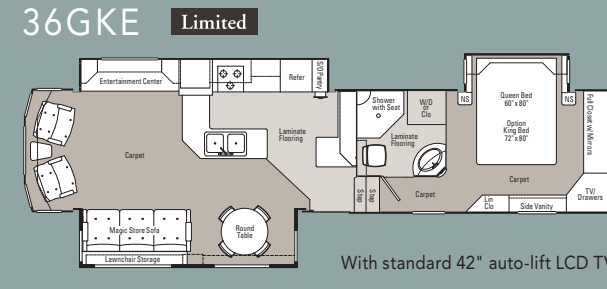
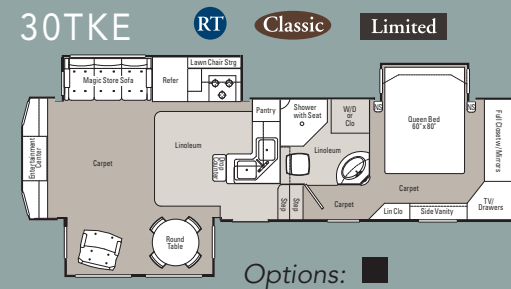
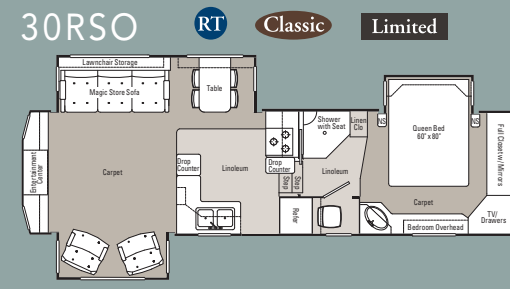
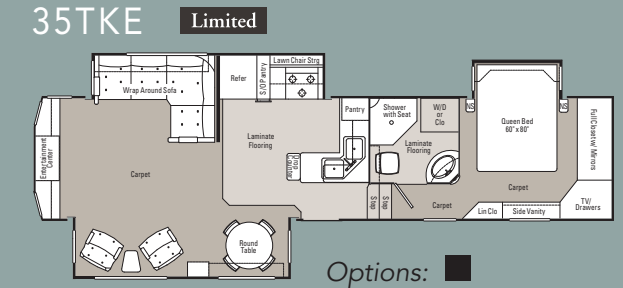
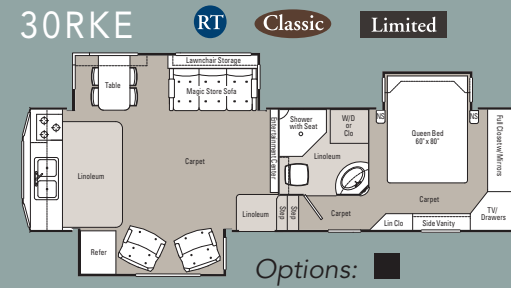
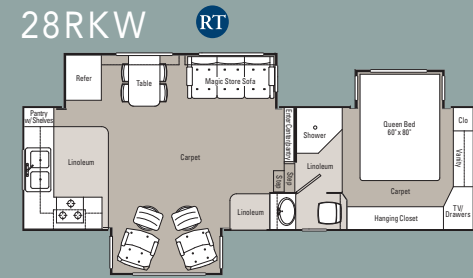
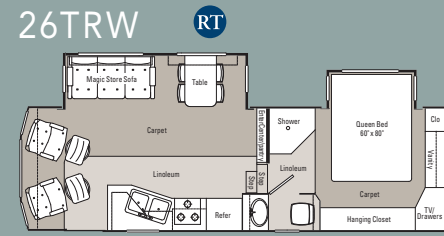


Rear garage entry or optional side entry gives the flexibility needed to load a variety of cargo.



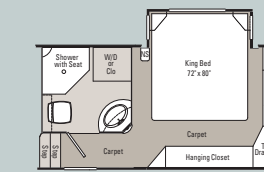
WILD CARGO

# 2010 FLOORPLANS

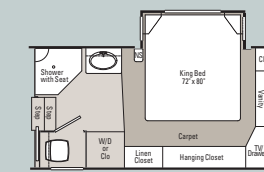


## FLOORPLAN OPTIONS KEY

Note: Excel Classic models come standard with linoleum while the Limited Edition models come standard with residential laminate flooring.



■ "E" Bath King Suite



▲ "O" Bath King Suite

LIMITED

MODEL:	30RKE	30RKO	30RSO	30TKE	33GKE	33RKE	33RKO	33RSE
Square Feet	328.7	328.7	325.3	328.0	344.7	351.5	351.5	347.7
Base Unit Wt. (w/o Opt.)	12,500	12,500	12,500	12,360	12,650	13,150	13,150	13,080
Unloaded Veh. Wt. (w/o Water)	12,800	12,800	12,800	12,660	12,950	13,450	13,450	13,380
Hitch Weight (w/o Water)	2,490	2,490	2,490	2,660	2,640	2,600	2,600	2,790
Weight on Axles	10,310	10,310	10,310	10,000	10,310	10,850	10,850	10,590
Combined Axle Weight Rating	14,000	14,000	14,000	14,000	14,000	14,000	14,000	14,000
Payload Capacity	4,300	4,300	4,300	4,440	4,150	3,650	3,650	3,720
Maximum GVWR	17,500	17,500	17,500	17,500	17,500	17,500	17,500	17,500
*Height (Incl Vents & A/C)	143 1/2"	143 1/2"	143 1/2"	143 1/2"	143 1/2"	143 1/2"	143 1/2"	143 1/2"
Overall Length	31' 11"	31' 11"	31' 11"	31' 11"	35' 3"	34' 11"	34' 11"	34' 11"
Fresh Water Capacity	64	64	64	64	64	64	64	64
Gray Water Capacity	65	65	65	65	65	65	65	65
Black Water Capacity	46	46	46	46	46	46	46	46
In-Line Central Air	15M	15M	15M	15M	15M	15M	15M	15M
Furnace BTU	35M	35M	35M	35M	35M	35M	35M	35M
Living Area Int. Height	7' 6"	7' 6"	7' 6"	7' 6"	7' 6"	7' 6"	7' 6"	7' 6"
Bedroom Int. Height	6' 4"	6' 4"	6' 4"	6' 4"	6' 4"	6' 4"	6' 4"	6' 4"
2 Pc. Stacking Washer/Dryer	OPT	OPT	N/A	OPT	OPT	OPT	OPT	OPT
Electric Fireplace	N/A	N/A	OPT	OPT	OPT	OPT	OPT	OPT
Awning Size	16'	16'	19'	17'	17'	16'	16'	19'

LIMITED (cont.)

MODEL:	33RSO	33TKE	35RSE	35RSO	35TKE	36GKE	36GKM	36TKE
Square Feet	347.7	364.4	366.1	366.1	389.1	390.1	390.1	396.0
Base Unit Wt. (w/o Opt.)	13,080	13,190	13,500	13,500	13,680	14,100	14,100	14,150
Unloaded Veh. Wt. (w/o Water)	13,380	13,490	13,800	13,800	13,980	14,400	14,400	14,450
Hitch Weight (w/o Water)	2,790	2,640	2,740	2,740	2,620	2,790	2,680	2,950
Weight on Axles	10,590	10,960	11,060	11,060	11,360	11,610	11,720	11,500
Combined Axle Weight Rating	14,000	14,000	14,000	14,000	14,000	15,000	15,000	15,000
Payload Capacity	3,720	3,610	3,300	3,300	3,120	3,950	3,950	3,900
Maximum GVWR	17,500	17,500	17,500	17,500	17,500	18,750	18,750	18,750
*Height (Incl Vents & A/C)	143 1/2"	143 1/2"	143 1/2"	143 1/2"	143 1/2"	143 1/2"	143 1/2"	143 1/2"
Overall Length	34' 11"	34' 11"	36' 8"	36' 8"	36' 11"	37' 8"	37' 8"	37' 6"
Fresh Water Capacity	64	64	64	64	64	64	64	64
Gray Water Capacity	65	65	65	65	65	65	65	65
Black Water Capacity	46	46	46	46	46	46	46	46
In-Line Central Air	15M	15M	15M	15M	15M	15M	15M	15M
Furnace BTU	35M	35M	40M	40M	40M	40M	40M	40M
Living Area Int. Height	7' 6"	7' 6"	7' 6"	7' 6"	7' 6"	7' 6"	7' 6"	7' 6"
Bedroom Int. Height	6' 4"	6' 4"	6' 4"	6' 4"	6' 4"	6' 4"	6' 4"	6' 4"
2 Pc. Stacking Washer/Dryer	OPT	OPT	OPT	OPT	OPT	OPT	OPT	OPT
Electric Fireplace	OPT	OPT	OPT	OPT	OPT	OPT	OPT	OPT
Awning Size	19'	17'	19'	19'	17'	17'	17'	17'

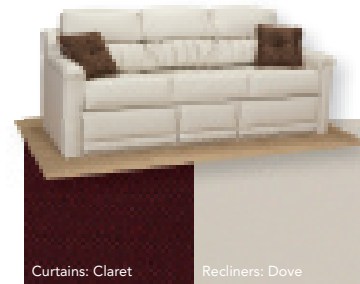
## DECORATOR PACKAGES

EMPRESS



Curtains: Claret Recliners: Dusk

DOVE



Curtains: Claret Recliners: Dove

BOMBER JACKET



Curtains: Biscuit Recliners: Bomber Jacket

EVERGREEN



Curtains: Gold Recliners: Bronze

BRONZE SUEDE



Curtains: Spice Recliners: Endeavor

JEWEL



Curtains: Biscuit Recliners: Haven

CHESTNUT



Curtains: Caraway Recliners: Haven

TARRAGON



Curtains: Coin Recliners: Haven

See dealer swatch samples for a more accurate color representation.

CLASSIC

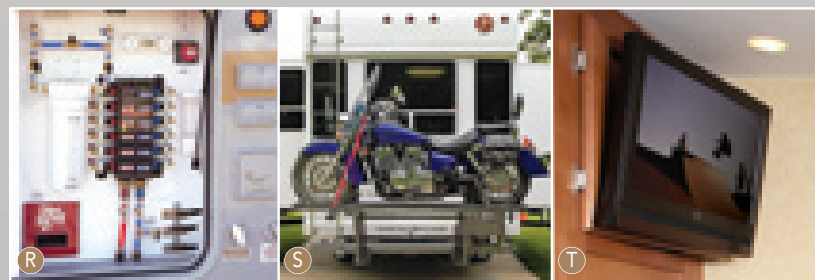
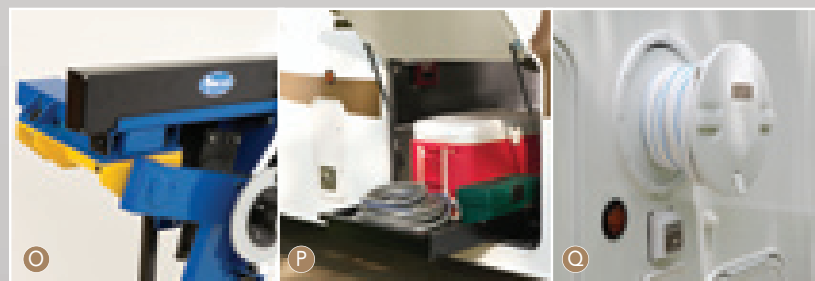
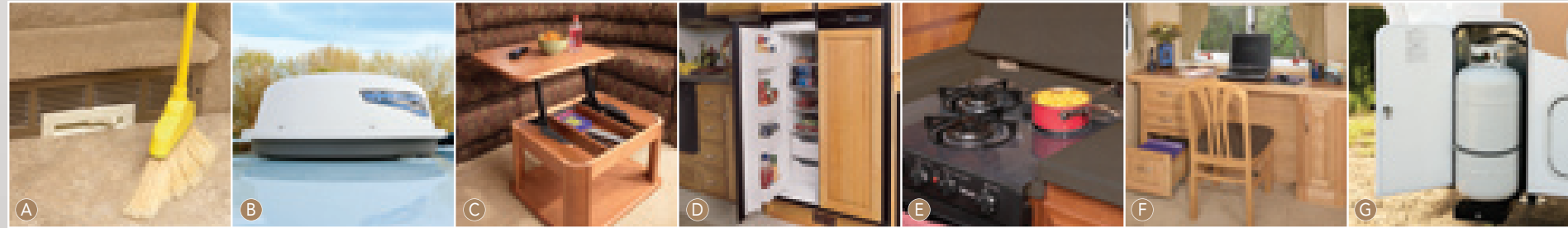
MODEL:	30RKE	30RKO	30RSO	30TKE	33RKE	33RKO	33RSE	33RSO	33TKE
Square Feet	328.7	328.7	325.3	328.0	351.5	351.5	347.7	347.7	364.4
Base Unit Wt. (w/o Opt.)	11,240	11,240	11,900	11,900	12,690	12,690	12,490	12,490	12,690
Unloaded Veh. Wt. (w/o Water)	12,080	12,080	12,200	12,200	12,990	12,990	12,790	12,790	12,990
Hitch Weight (w/o Water)	2,460	2,460	2,620	2,620	2,640	2,640	2,500	2,500	2,640
Weight on Axles	9,140	9,140	9,580	9,580	10,350	10,350	10,290	10,290	10,350
Combined Axle Weight Rating	14,000	14,000	14,000	14,000	14,000	14,000	14,000	14,000	14,000
Payload Capacity	3,060	3,060	4,900	4,900	4,110	4,110	4,310	4,310	4,110
Maximum GVWR	17,500	17,500	17,500	17,500	17,500	17,500	17,500	17,500	17,500
*Height (Incl Vents & A/C)	143 1/2"	143 1/2"	143 1/2"	143 1/2"	143 1/2"	143 1/2"	143 1/2"	143 1/2"	143 1/2"
Overall Length	31' 11"	31' 11"	31' 11"	31' 11"	34' 11"	34' 11"	34' 11"	34' 11"	34' 11"
Fresh Water Capacity	64	64	64	64	64	64	64	64	64
Gray Water Capacity	65	65	65	65	65	65	65	65	65
Black Water Capacity	46	46	46	46	46	46	46	46	46
In-Line Central Air	15M	15M	15M	15M	15M	15M	15M	15M	15M
Furnace BTU	35M	35M	35M	35M	35M	35M	35M	35M	35M
Living Area Interior Height	7' 6"	7' 6"	7' 6"	7' 6"	7' 6"	7' 6"	7' 6"	7' 6"	7' 6"
Bedroom Interior Height	6' 4"	6' 4"	6' 4"	6' 4"	6' 4"	6' 4"	6' 4"	6' 4"	6' 4"
2 Pc. Stacking Washer/Dryer	OPT	OPT	N/A	OPT	OPT	OPT	OPT	OPT	OPT
Electric Fireplace	N/A	N/A	OPT	OPT	OPT	OPT	OPT	OPT	OPT
Awning Size	16'	16'	19'	17'	16'	16'	19'	19'	17'

RT

MODEL:	26TRW	28RKW	30RKE	30RKO	30RSO	30TKE	33RKE	33RKO	33RSE	33RSO	39SKM	39TKE
Square Feet	270.4	311.7	328.7	328.7	325.3	328.0	351.5	351.5	347.7	347.7	399.8	399.8
Base Unit Wt. (w/o Opt.)	9,280	10,250	11,280	11,280	11,260	11,290	11,680	11,680	11,680	11,680	14,840	14,840
Unloaded Veh. Wt. (w/o Water)	9,580	10,550	11,580	11,580	11,560	11,590	11,980	11,980	11,980	11,980	15,140	15,140
Hitch Weight (w/o Water)	1,860	2,100	2,490	2,490	2,420	2,435	2,480	2,480	2,480	2,480	2,800	2,800
Weight on Axles	7,720	8,450	9,090	9,090	9,140	9,155	9,500	9,500	9,500	9,500	12,340	12,340
Combined Axle Wt. Rating	12,000	12,000	12,000	12,000	12,000	12,000	12,000	12,000	12,000	12,000	18,000	18,000
Payload Capacity	5,020	4,050	3,020	3,020	3,040	3,010	2,620	2,620	2,620	2,620	6,960	6,960
Maximum GVWR	15,000	15,000	15,000	15,000	15,000	15,000	15,000	15,000	15,000	15,000	22,500	22,500
*Height (Incl Vents & A/C)	143 1/2"	143 1/2"	143 1/2"	143 1/2"	143 1/2"	143 1/2"	143 1/2"	143 1/2"	143 1/2"	143 1/2"	12' 8 1/2"	12' 8 1/2"
Overall Length	27' 11"	29' 8"	31' 11"	31' 11"	31' 11"	31' 11"	34' 11"	34' 11"	34' 11"	34' 11"	40' 11"	40' 11"
Fresh Water Capacity	71	71	64	64	64	64	64	64	64	64	64	64
Gray Water Capacity	55	55	65	65	65	65	65	65	65	65	65	65
Black Water Capacity	39	39	46	46	46	46	46	46	46	46	46	46
In-Line Central Air	15M	15M	15M	15M	15M	15M	15M	15M	15M	15M	15M	15M
Furnace BTU	35M	35M	35M	35M	35M	35M	35M	35M	35M	35M	35M	35M
Living Area Interior Height	7' 6"	7' 6"	7' 6"	7' 6"	7' 6"	7' 6"	7' 6"	7' 6"	7' 6"	7' 6"	8' 3 1/2"	8' 3 1/2"
Bedroom Interior Height	6' 4"	6' 4"	6' 4"	6' 4"	6' 4"	6' 4"	6' 4"	6' 4"	6' 4"	6' 4"	6' 4"	6' 4"
2 Pc. Stacking Washer/Dryer	N/A	N/A	OPT	OPT	N/A	OPT	OPT	OPT	OPT	OPT	OPT	OPT
Electric Fireplace	N/A	N/A	N/A	N/A	OPT	OPT	OPT	OPT	OPT	OPT	N/A	OPT
Awning Size	17'	17'	16'	16'	19'	17'	16'	16'	19'	19'	17'	17'
Garage Length	N/A	N/A	N/A	N/A	N/A	N/A	N/A	N/A	N/A	N/A	10' 6"	10' 6"

WILD CARGO

# EXCEL OFFERS DOZENS OF OPTIONS TO FULLY CUSTOMIZE YOUR FIFTH WHEEL.



- A** The central vac with powerhead and VacPan makes cleaning a breeze!
- B** The new "RoadTrip" automatic satellite system enhances your TV experience.
- C** Our optional EZ-up coffee table can be extended and used as a writing desk or an additional place setting.
- D** The quad door refrigerator features 12 cubic feet of space.
- E** Attractive and easy to clean, this glass top range offers the best of both worlds with two gas and one electric cooktop element.
- F** Excel's exclusive "Dual Desk-Table" gives those who want easy access to their computer, printer and files a way to convert the dining table into a workspace. Simply drop the hinged tabletop under the desk. (See additional photos on page 7)
- G** Slideout propane compartments on each side of coach keep tanks secure, and make the controls easy to read and reach.
- H** Camper jacket adds style and protection, and yet still allows you to access the basement door.
- I** Pivot-EZ sewer hose compartment ensures you'll never have to disconnect your hose from the RV.
- J** The Glide Ride Pin Box absorbs bumps and jolts through a gravity, self-centering parallel linkage system.
- K** The boat hitch doubles as a receiver hitch for a bicycle rack.
- L** Our "New Generation" hydraulic jacks make leveling your fifth wheel easier and smoother than ever.
- M** Electric stabilizer jacks make set-up a breeze and saves your back and shoulders.
- N** The Electric Awning is just as sophisticated as the rest of your RV – operate it from a key fob remote control, or let the wind sensor automatically retract it!
- O** The Mor/ryde (rubber independent suspension) system and disc brakes replace the standard leaf spring suspension to provide smoother towing. We also offer disc brakes without the Mor/ryde suspension. *Due to frequent changes by tow vehicle manufacturers, Peterson Industries and Dexter Axle cannot guarantee the compatibility of integrated brake control systems with our disc brake option. To check compatibility, contact Dexter Axle at 574-295-7888.*
- P** We've added even more strength and stability with struts on heavy access doors (standard on Classic and Limited). Plus most models offer slide out basement storage.
- Q** The Reel-EZ water hose makes extending and storing your hose a breeze.
- R** Our multi-function utility center provides easy access to shut off individual faucets, change water filters, replace vacuum bags, disconnect the battery and more.
- S** Haul your motorcycle, golf cart or ATV anywhere with our frame-mounted Hydralift™!
- T** A hinged LCD-HD television doubles as extra storage in the bedroom.

## 2010 OPTIONS & STANDARD FEATURES

Each Excel model is geared to meet the expectations, needs and budgets of different RV buyers. It's not a matter of one line being "better" than another, but more a question of which line best meets your lifestyle. The chart below compares the standard and optional features of our four lines. Rest assured, however, that whether you pull a Limited, Classic, RT or Wild Cargo, your fifth wheel comes with one standard feature no other manufacturer can offer — the legendary value of Excel!

Construction and Body Features	RT	CLASS	LTD	CARGO
Fully Enclosed and Heated Underbelly	Std	Std	Std	Std
8" Door-side Scene Light	Std	Std	Std	Std
Minus Ten Degree Guarantee with thermopane option	Std	Std	Std	Std
Large Basement Storage Area	Std	Std	Std	Std
Struts on Large Access Doors	Opt	Std	Std	Std
Manual Awning	Std	Std	Std	Std
Two-Step Weathershield Awning	Opt	Opt	Opt	Opt
Electric Weatherpro Awning	—	Opt	Opt	Opt
Monitor Panel	Std	Std	Std	Std
16" Tires	Std	Std	Std	Std
Dual 30 lb. Bottles	Std	Std	Std	Std
Gel-Coated Fiberglass Exterior, front & back cap	Std	Std	Std	Std
1-3/8" Thick Radius Gel-Coated Access Doors	Std	Std	Std	Std
"Drop Z" Box Tube Construction	Std	Std	Std	Std
Tinted Windows	Std	Std	Std	Std
Thermo-Pane Windows	Opt	Opt	Opt	Opt
Walk Anywhere One-piece Seamless Rubber Roof	Std	Std	—	Std
Walk Anywhere Molded Gel-Coated Fiberglass Roof	—	—	Std	—
White Spoke Wheels	Std	Std	—	—
Aluminum Alloy Wheels	Opt	Opt	Std	Std
LED Tail Lights	—	—	Std	Std
35M BTU Furnace with In-floor Ducting (40M in 35' & up, 35M in Wild Cargo)	Std	Std	Std	Std
Hydroflame 2-Stage Furnace	—	Opt	Opt	Opt
Camper Jacket	—	Opt	Opt	—
Lawn Chair Storage (most models)	Opt	Std	Std	Std
Boat Hitch (N/A in Canada)	Opt	Opt	Opt	—
Dual Sliding LP Trays (N/A in Canada)	—	Opt	Opt	Opt
Sliding Storage Tray	—	Opt	Opt	Opt
NevRLube Axles and Shock Absorbers	Std	Std	Std	Std
Mor-Ryde Susp. w/Disc Brakes – 17.5" "J" tires	—	Opt	Opt	—
Disc Brakes – 17.5" "J" tires	—	Opt	Opt	—

Interior Construction Details	RT	CLASS	LTD	CARGO
Satin Nickel Fixtures	Std	Std	Std	Std
Linoleum in Bathroom, Kitchen and Entry	Std	Std	—	Std
Residential style carpet with 8 lb. Rebound Pad	Std	Std	Std	Std
Residential Laminate Flooring in Bathroom, Kitchen and Entry Areas	—	—	Std	—
Brazilian Cherry Maple Interior with Crown Molding	—	—	Opt	Opt
Hickory interior with crown molding	—	—	Opt	Opt
Oak-framed Cabinet Doors with Raised Panels	Std	Std	—	Std
Solid Wood Cabinetry with Ball Bearing Drawer Glides	—	—	Std	Std
Contour Padded Window Valances w/Curtains and Duplex Shades	Std	Std	Std	Std
Recessed Halogen Lighting	—	—	Std	Std
64" Ceilings in the Level Bath and Deck Area	Std	Std	Std	Std
Padded Ceiling	—	—	Opt	Opt
Bevel Edge Formica Countertop	Std	—	—	—
Molded One-Piece "Toughstone" Countertop	—	Std	Std	Std

Appliances and Accessories	RT	CLASS	LTD	CARGO
Microwave & 3-Burner High Output Range	Std	conv. oven	conv. oven	conv. oven
Glass Top Gas/Electric Range	—	Opt	Opt	Opt
Large 2-Door Refrigerator	Std	Std	Std	Std
10 cu ft Fridge or 12 cu ft Quad Door Fridge	—	Opt	Opt	Opt
Telephone/Cable TV Prewire & TV Antenna with Booster	Std	Std	Std	Std
Dual Horn Satellite System with Receiver	—	Opt	Opt	Opt
Winegard "RoadTrip" Dome Satellite System w/Rec	—	Opt	Opt	Opt
19" LCD/DVD TV in Bedroom	—	Opt	Opt	Opt
Ceiling-installed Dual Horn Satellite Wiring (wires only)	—	Std	Std	Std
Standard LCD Flat Panel Television in Livingroom	26"	32"	32"	32"
42" LCD TV with Power Lift (36GKE only)	—	—	Std	—
Recessed Range with Solid Surface Flush Top	—	Std	Std	Std
Central Vacuum System w/ Powerhead and VacPan	—	Opt	Opt	Opt
Whirlpool Front Load Washer/Compact Dryer	Opt	Opt	Opt	Opt
Washer/Dryer Ready	Opt	Opt	Std	Std
Motorized SENSAR TV Antenna	Opt	Opt	Opt	Opt

Living/Dining Furniture and Accessories	RT	CLASS	LTD	CARGO
Rocker/Glider Swivel Recliners	Opt	Std	Std	Opt
Hide-a-bed in Sofa	Opt	Opt	Opt	Opt
Mainstreet Sofa w/Hide-a-bed	—	Opt	Opt	—
Sofa Caddie (N/A in Mainstreet Sofa)	Opt	Opt	Opt	—
Computer Station (most models)	Std	Std	Std	—
Euro Chairs with Ottomans	Std	Opt	Opt	Std
"E-Z" Up Coffee Table	—	Opt	Opt	Opt
End Table Between Recliners	Opt	Opt	Std	—
"Legless" Dinette Table	Std	Std	—	—
Solid Wood Dinette Table with Pedestal Base	—	—	Std	Std
Dining Booth (instead of table and chairs)	Opt	Opt	Opt	Opt
Magic Store Sofa (most models)	Std	Std	Std	—

Bedroom/Bathroom Amenities	RT	CLASS	LTD	CARGO
Queen Innerspring Mattress with Comforter (Pillows and Shams in Ltd & Classic)	Std	Std	Std	Std
Pillow Top Mattress	Opt	Opt	Std	Std
Box Springs	—	Opt	Std	Opt
King Size Bed	—	Opt	Opt	Opt
Nightstand on Each Side of the Bed	—	Std	Std	Std
Lightblocker Vent Cover in Bedroom	Opt	Std	Std	Std
Lift-Up Bed for Additional Storage	Std	Std	Std	Std
Large ABS Residential Size Shower with Glass Door	Std	—	—	Std
Large One-Piece Molded Granite-look Shower and Matching Lavatory	—	Std	Std	—
China Toilet with Bowl Sprayer	—	—	Std	—

Plumbing	RT	CLASS	LTD	CARGO
Actively Heated Holding Tanks, Valves and Water Lines	Std	Std	Std	Std
65 Gal. Gray Water Tank & 46 Gal. Black Water Tank (most models)	Std	Std	Std	Std
64 Gallon Fresh Water System w/Tuff-Pex Water Lines*	Std	Std	Std	Std
Gas/Electric DSI Water Heater with Water Heater Bypass	Std	Std	Std	Std
16 Gal Output G/E Water Heater w/DSI	Opt	Opt	Std	Opt
Whole House Water Filter	—	Opt	Opt	Opt
SureFlo 55PSI Water Pump	Std	Std	Std	Std
Pivot-EZ Sewer Hose Compartment	Opt	Opt	Opt	Opt
Reel-EZ Water Hose Compartment (N/A 30RKO/30RKE)	Opt	Opt	Opt	Opt

\* The 26TRW and 28RKW feature a 71 gallon fresh water system.

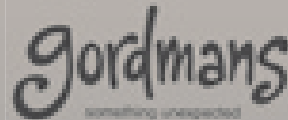
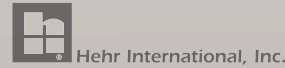
Electrical	RT	CLASS	LTD	CARGO
45 Amp Converter	Std	—	—	—
60 Amp Converter	—	Std	Std	Std
50 Amp service (excludes some RT models)	Std	Std	Std	Std
Flush Floor Electric Slide Rooms w/ Independent 12v Motors & Manual Override	Std	Opt	Opt	—
New Generation Hydraulic Slide-out System	—	Std	Std	Std
New Generation Hydraulic Front Jacks	—	—	Std	Std
12v Electric Front Jacks	Std	Std	Opt	—
Electric Fireplace (N/A in all models)	Opt	Opt	Opt	Opt
Steel Generator Box	Opt	Opt	Opt	Std
Generator Ready for Onan (includes Box, Energy Command Monitor)	Opt	Opt	Opt	Opt
5500W LP Onan Generator (Includes Generator Ready)	Opt	Opt	Opt	Opt
H&H Electric Rear Stabilizer Jacks	Opt	Opt	Opt	Opt
Independent Hydraulic Leveling System	—	Opt	Opt	Opt
15,000 BTU Roof Air Conditioner with Wall Mount Thermostat	Std	Std	Std	Std
Heat Pump instead of Air Conditioner	—	Opt	Opt	Opt
Glide Ride Pin Box	Opt	Opt	Opt	Opt
Hydralift Motorcycle Carrier (33' and below)	Opt	Opt	Opt	—

Information reflects product design at date of printing. Peterson Industries reserves the right to make changes in design and specifications without notice.

Peterson Industries is proud to use these suppliers who share our commitment to quality and service:



Arlwin Mfg.



Gordmans generously provided many of the decorator items featured in the photos of this brochure.

# EXCELRVS.COM



## CHECK OUT OUR NEW & IMPROVED WEBSITE!

Visit our website for in-depth information on our entire line of Excel RVs including exterior views and floorplans with complete specs. You'll find colorful and descriptive photos of standard and optional features, too. Newsletter and event information keep you up-to-date on factory news, maintenance tips and opportunities to meet and travel with fellow Excel owners. There is even a parts and accessories store with everything you need to keep your Excel in peak working condition.

Your Local Excel Dealer:



Manufactured by Peterson Industries, Inc.  
616 E. Hwy. 36, Smith Center, Kansas 66967  
800-368-3759 • [www.excelrvs.com](http://www.excelrvs.com)