

TRAILBLAZER 2009

By *Komfort*



Designed for Modern Living
- Built for a Lifetime!



**RESIDENCE
EDITION**

For 2009
Trailblazer

had a residential interior designer completely redesign and coordinate the entire coach. Our all-new interiors feature a matching décor insert on re-designed slide room fascia, designer solid-wrapped window valances with hidden reading light, molded, raised-panel, painted doors with brushed nickel handles, brushed-nickel light fixtures, & upholstered dinette accent feature. As always, our units feature large panoramic windows, exceptional lighting, over-stuffed sofas & deep 43" dinettes (most models), unique & functional entertainment centers,

AND Simply, the Best Fit & Finish Available!

TRAILBLAZER By Komfort has the Extras!



2009 Trailblazer Kitchen's received a gorgeous face-lift... rich, warm-tone all-wood cabinets, rounded, self-edge countertops with extensions, and upgraded linoleum in the popular faux-wood style! The residential theme continues with double-bowl sinks & covers, all-metal, high-rise faucets, deep pantries, matching black appliances, and large windows for extra lighting.



Trailblazer's updated Bedroom Style includes colored accent wall panels behind the bed, painted, matching



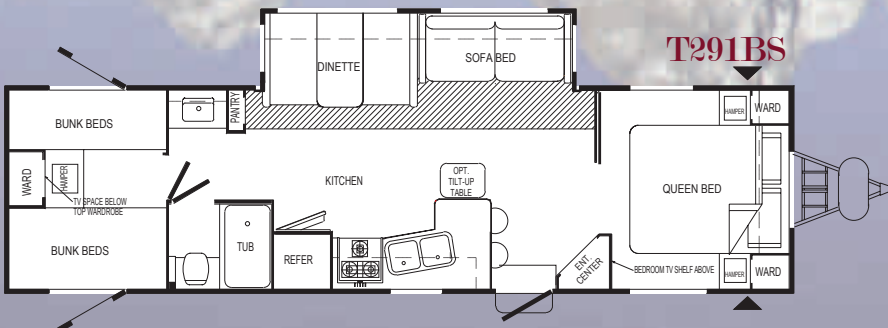
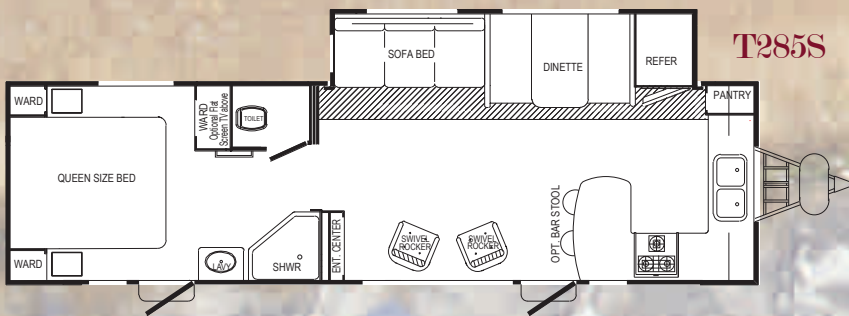
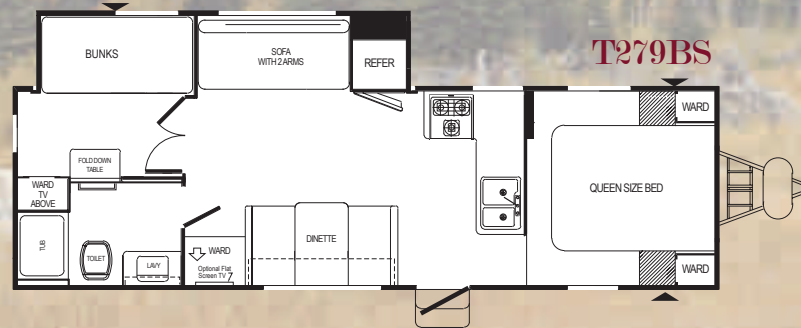
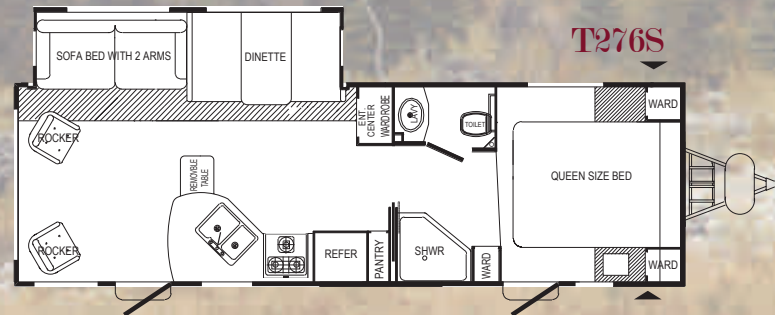
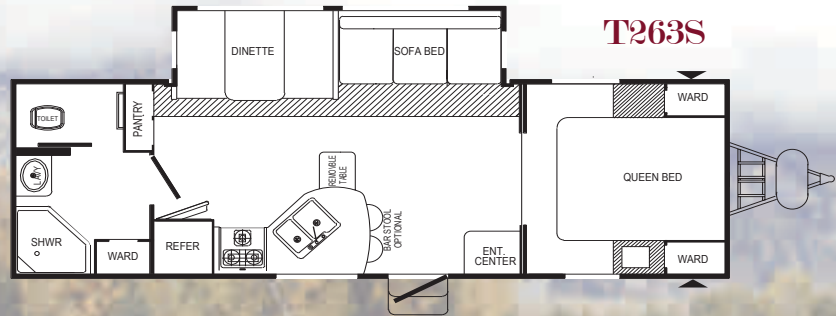
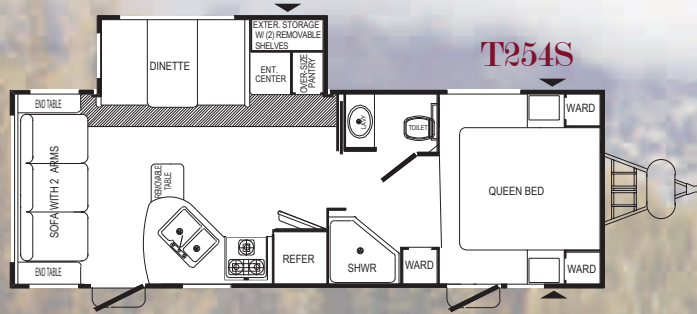
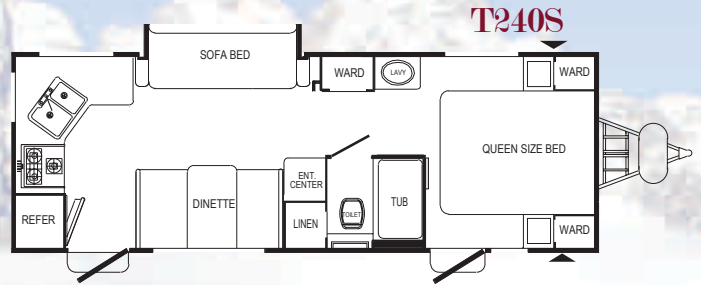
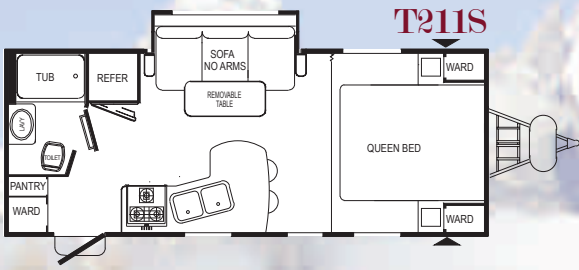
Mission Style headboards to match our designer, color-coordinated bed sets, and fluted glass doors on overhead cabinets with brushed nickel hardware. Of course we maintained the

necessities like overhead cabinets, large wardrobes, & under-bed storage space!



Relaxing Bath features include upgrade tub-surround with tub enclosure, glass doors for neo-angle showers, & porcelain foot-flush toilets

Travel Trailer Floor Plans

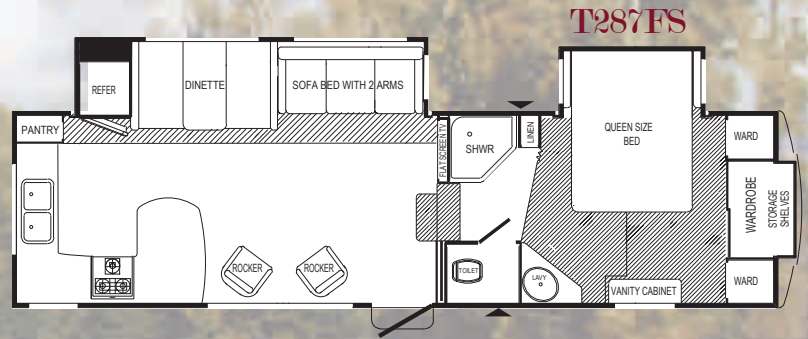
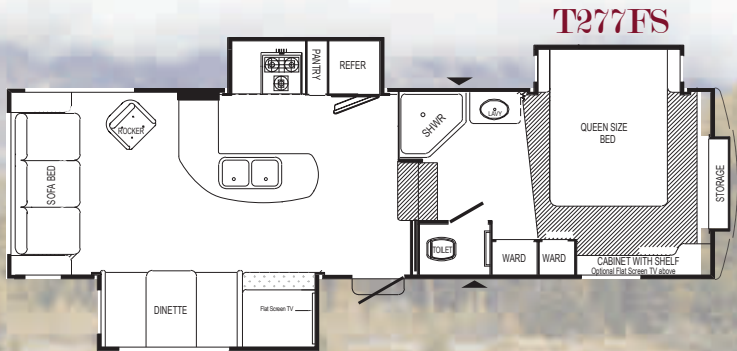
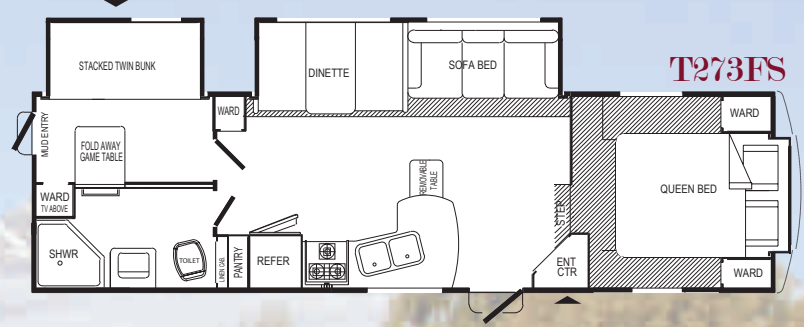
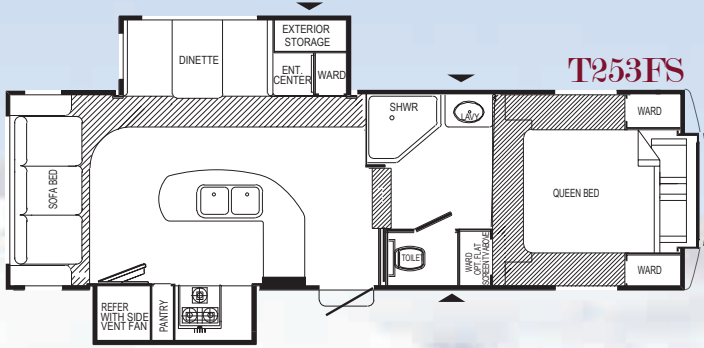


Travel Trailer Specification

MODEL	T211S	T240S	T254S
Length	23' 5"	26' 6"	27' 11"
Width	8' 3"	8' 3"	8' 3"
Height	10' 3"	10' 3"	10' 11"
Interior Height	6' 6"	6' 6"	6' 6"
GAWR - lbs.	7000	7000	10000
GVWR - lbs.	7605	7608	10000
Unloaded Weight - lbs.	4962	5602	6495
Cargo Capacity - lbs.	2643	2006	3505
Hitch Weight - lbs.	605	608	741
Fresh Water Tank Capacity - Gal.	56 *	56 *	56 *
Grey Water Tank - Gal.	45	45	45*
Black Water Tank - Gal.	45	45	45*
Furnace (BTU)	25M	25M	30M
Awning Size - ft.	13'	16'	16'

* Heated, Insulated, & Enclosed

Fifth Wheel Floor Plans



Fifth Wheel Specifications

MODEL	T253FS	T273FBS	T277FS	T287FS
Length	27'3"	31'5"	29'11"	31' 8"
Width	8'3"	8'3"	8'3"	8'3"
Height	11'9"	11'9"	12'3"	12'3"
Interior Height	7'3"	7'3"	7'3"	7'3"
Bedroom Height (for FW)	6'5"	6'5"	6'5"	6'5"
GAWR - lbs.	10,160	10,160	10,160	10,160
GVWR - lbs.	11,705	11,533	11,884	12,196
Unloaded Weight - lbs.	8,270	8,630	9,030	9,230
Cargo Capacity - lbs.	3,435	2,903	2,854	2,966
Hitch Weight - lbs.	1,545	1,373	1,724	2,036
Fresh Water Tank Capacity- Gal.	60*	60*	60*	60*
Grey Water Tank - Gal.	65*	45*	65*	65*
Black Water Tank - Gal.	45*	45*	45*	45*
Furnace (BTU)	30M	30M	30M	30M
Awning Size - ft.	14'	19'	14'	21'

* Heated, Insulated, & Enclosed

TRAILBLAZER

By Komfort

T263S	T276S	T279BS	T285S	T291BS
29' 9"	29' 7"	30' 11"	32' 3"	33' 11"
8' 3"	8' 3"	8' 3"	8' 3"	8' 3"
10' 11"	10' 11"	10' 11"	10' 11"	10' 11"
6' 6"	6' 6"	6' 6"	6' 6"	6' 6"
10000	10000	10000	10000	10000
10000	10000	10000	10000	10000
6410	6530	6970	7250	7485
3590	3470	3030	2750	2515
727	612	979	1230	1073
56 *	56 *	56 *	56 *	56*
45*	45*	45*	45*	45*
45*	45*	45*	45*	45*
30M	30M	30M	30M	30M
16'	16'	16'	21'	19'

The weights shown do not include any optional items. Height includes Air Conditioner.

GVWR: The maximum permissible weight of this trailer when fully loaded. It includes all weight at the trailer axles, and the tongue or pin.

UVW: The weight of the trailer as manufactured at the factory. It includes all the weight at the trailer axles and tongue or pin. If applicable, it also includes full generator fluids, including fuel, engine oil, and coolants.

CCC: the GVWR minus the UVW.

Trailblazer Construction

Roof Assembly (R-17)

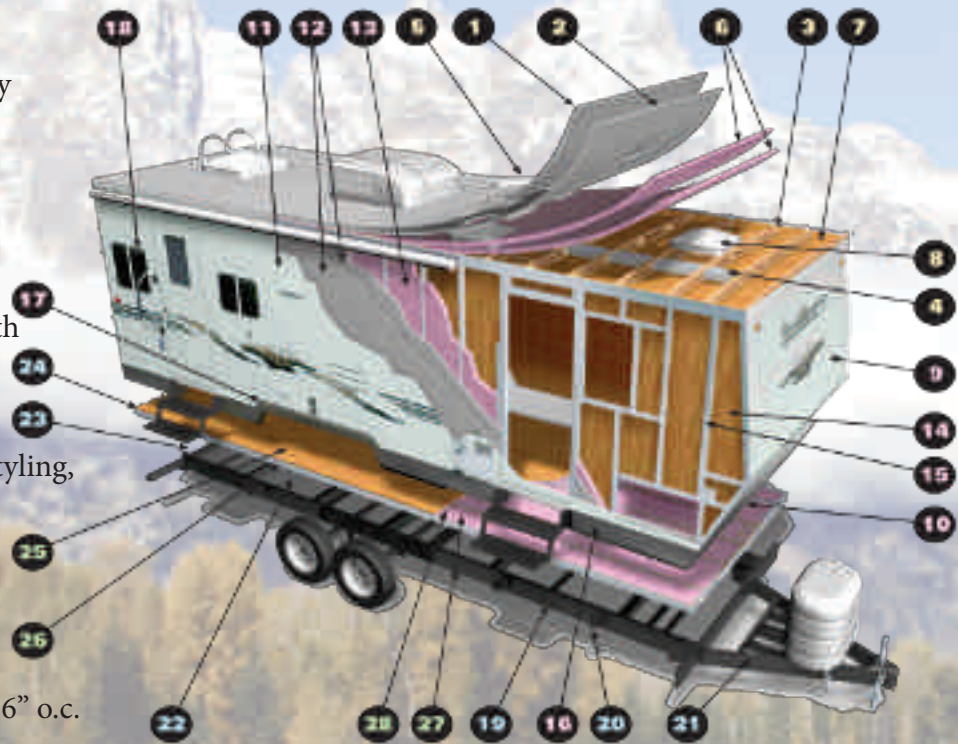
1. One-piece rubber roof with 12-year warranty
2. 3/8" roof decking
3. 5" tapered rafter system on 16" centers
4. Foam insulated air conditioning duct
5. Bathroom 14" x 22" dual Lexan skylight
6. Dual fiberglass insulation
7. Luan backed vinyl ceiling panel
8. Living area 22" x 22" dual Lexan skylight with black-out shade

Wall Assembly (R-7)

9. One-piece front cap with recessed contour styling, radius corners & integrated hitch lighting
10. Diamond Plate Front Protection
11. Gel-coat gloss fiberglass
12. Double luan-backed fiberglass support
13. Fiberglass insulation
14. Interior wall panel
15. Welded aluminum (.050) sidewall studs - 16" o.c.
16. Radius skirting
17. Custom fender skirt
18. Dark tinted windows

Floor & Chassis Assembly (R-18)

19. 6" - 8" cambered I-beam chassis
20. 14 gauge welded Z-frame cold-formed outriggers (max. 36" spacing)
21. Dual battery rack
22. Polyethylene 1-pc roto-mold fresh, grey & waste tanks
23. Under-slung spare tire carrier
24. Enclosed, heated & insulated floor system
25. 5/8" Dyna-Span seamless floor
26. 2"x 3" longitudinal floor support system
27. Double insulation
28. Vapor barrier



• San-T-Flush black tank system to easily clean the waste tank.



• E-Z Flex rubber suspension system.

Functional Features & More

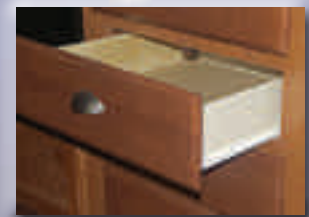
- Extra storage on most models.
- Large folding grab handle.



• Optional free-standing table has hidden extension leaf & storage drawer.



• Led running, clearance, & tail lights standard for added safety



• Roller drawer glides

Standard Features

Exterior

- One-piece, custom molded fiberglass front cap
- Diamond plate rear bumper & front protection
- Welded aluminum sidewall structure – 16" o.c.
- 8'3" Wide-body design
- E-Z Flex rubber suspension system
- Polyethylene 1-pc. roto-molded holding tanks & wheel wells
- Rack & pinion 12-v electric slide system with manual override
- Heavy duty stabilizer jacks welded to chassis
- Spare tire hidden under chassis
- Exterior light group
- Radius entry & baggage doors
- Pre-plumbed for outside BBQ
- Radial tires for safer towing
- Exterior shower
- Exterior ladder
- Digital, HD-capable TV antenna with signal booster
- 6 gal LP/110v DSI water heater
- 10 gal LP/110v DSI water heater (all FW's & larger TT models)

Interior

- Large 22" range/oven
- Deep, residential-style galley sink with all-metal, high-rise faucet & sink covers
- 6 cu. ft. double-door refrigerator
- 8 cu. ft. double-door refrigerator (all FW's & larger TT models)
- Bedroom roof vent
- Magazine rack in lavy (most models)
- Porcelain foot-flush toilet
- Power vent in bath
- Dual-pane skylight in bath
- Upgrade 8" innerspring mattress
- Tub/shower surround & enclosure
- Sant-T-Flush black tank flush system
- Black-radius, raised-panel refer door insert

TRAILBLAZER

By **Komfort**

Standard Packages

Deluxe Convenience Package (Models T254S & larger)

- A & E 12v power awning
- 13.5 btu roof air conditioning
- Microwave oven
- Water filtration system
- Jensen AM/FM/CD/DVD/MP3 Entertainment System
- Extra-large, dual-pane living room skylight with black-out shade
- Day & night shades
- Neo-angle shower with glass door (select models)
- Large folding exterior grab handle

Convenience Package (Models T240S & smaller)

- A & E 12v power awning
- 13.5 btu roof air conditioning system
- Microwave oven
- Jensen AM/FM/CD/DVD/MP3 Entertainment System
- Extra-large, dual-pane living room skylight with black-out shade
- Deluxe upgrade mattress
- Tub/shower surround & enclosure
- Day & night shades

THERMAL MAX - The "ULTIMATE ALL-WEATHER PACKAGE"



- R-18 rated floor assembly
- R-17 rated roof assembly
- R-7 rated walls
- Dark, tinted windows
- Insulated (Astrofoil) floor slide out system with R-15 insulation value
- Fully-enclosed, heated & insulated – fresh, gray, & black water tanks (t254s & larger)
- Poly-flex underbelly system



Backed by Komfort Corporation's Full One-Year Transferable Warranty!

Options

- BBQ outside grill
- Holding tanks 12 v heat pad
- Fresh water 12 v heat pad
- Free standing dinette with 4 chairs (model specific)
- Bar stools (model specific)
- Hide-a-bed
- Express air sofa-bed
- Bedroom carpet
- Living room carpet
- Dark tinted thermal pane windows
- 19" - 26" High definition LCD TV's
- Chrome wheels
- Aluminum wheels
- 16" wheels & tires
- Generator Ready (FW's only)

Quality... Function... State-of-the-Art Design!



Started in a small plant in Santa Ana, CA in 1967 and now based near Portland, OR, Komfort Corp. moved into this state-of-the-art facility in May, 2003.

Fabulous Residential Interior Color Choices!



Earth



Eco



Garnet



KOMFORT

P.O. Box 2515
Clackamas, Oregon 97015

503.722.5199

FAX 503.722.5193

www.Komfort-rv.com

TRAILBLAZER

By Komfort

- Komfort Trailers & Fifth Wheels are standard-size trailers designed and built for durability and maximum living comfort.
- Product information, specifications, and photography in this brochure were as accurate as possible at the time of printing. Actual products may differ. Prices and specifications are subject to change without notice. All capacities are approximate and dimensions are nominal.
- Warning: This information is intended as a guide only. Weights of individual vehicles may vary. Consult your owner's manual for complete loading, weighing and towing instructions.
- This brochure is printed on recycled paper as part of Thor's corporate effort to minimize waste and conserve our natural resources. Providing safe, fuel-efficient recreational vehicles is Thor's way of further demonstrating our role as the industry leader in safeguarding our environment.

Your Authorized Dealer

