

# Tango



Pacific  
Coachworks

*Travel Trailers & Fifth Wheels*

*The Tango Difference*

# From our family.... to yours



RV industry veterans Tom Powell and Dane Found began Pacific Coachworks in July 2006 with a philosophy of excellence in construction and design. Tango models have received high praise from customers and industry insiders alike, establishing Pacific Coachworks as an emerging leader in the field.

Our commitment to designing and manufacturing quality travel trailers and fifth wheels makes the Tango what it is today. The design team has created each Tango with the camper in mind, creating a product that is highly comfortable and functional. Our employees take great pride in their craftsmanship and assemble each trailer and fifth wheel as if it were made for their own family.

Pacific Coachworks views itself as a service company that manufactures recreational vehicles. As our credo states, we place an emphasis on providing the best customer service in the industry. From the assembly line to the showroom and beyond, Tango owners can expect attention to detail and exceptional customer service.





If you desire residential comfort and style, then the Tango line of travel trailers and fifth wheels is made for you. Full kitchens with large slide outs, sofas and dinettes adorned in the latest designer fabrics and quality cabinet construction are just a few of the many attractions. Every Tango is loaded with features and constructed with spacious, well designed interiors and clean-line exteriors.

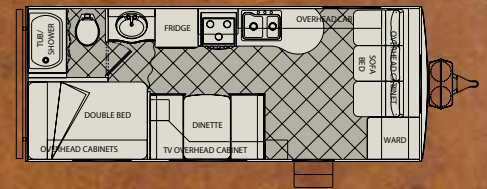
**Model 2560RBSS shown**



Opposite View ▶



Specifications	216CB
Overall Length	23'10"
Overall Width	8'
Overall Height (w/AC)	10'8"
Axles	2
GVWR	7000 lbs.
Dry Weight	4500 lbs.
Payload	2500 lbs.
Hitch Weight	580 lbs.
Tire Size	15"
Sleeping Capacity	6
Fresh Water Capacity	50 gal.
Gray Tank Capacity	30 gal.
Black Tank Capacity	30 gal.



Specifications	217BH
Overall Length	23'10"
Overall Width	8'
Overall Height (w/AC)	10'8"
Axles	2
GVWR	7000 lbs.
Dry Weight	4500 lbs.
Payload	2500 lbs.
Hitch Weight	580 lbs.
Tire Size	15"
Sleeping Capacity	7
Fresh Water Capacity	50 gal.
Gray Tank Capacity	30 gal.
Black Tank Capacity	30 gal.



Opposite View ▶



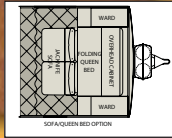
# Tango

## Travel Trailers

### Specifications

# 224RB

Overall Length	23'11"
Overall Width	8'
Overall Height (w/AC)	10'8"
Axles	2
GVWR	7000 lbs.
Dry Weight	4500 lbs.
Payload	2500 lbs.
Hitch Weight	520 lbs.
Tire Size	15"
Sleeping Capacity	4
Fresh Water Capacity	50 gal.
Gray Tank Capacity	30 gal.
Black Tank Capacity	30 gal.



Opposite View ▶

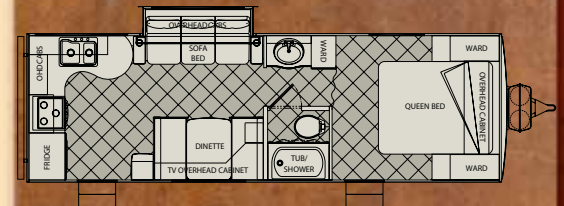


5

### Specifications

# 256RKS

Overall Length	29'0"
Overall Width	8'
Overall Height (w/AC)	10'8"
Axles	2
GVWR	7400 lbs.
Dry Weight	5500 lbs.
Payload	1900 lbs.
Hitch Weight	520 lbs.
Tire Size	15"
Sleeping Capacity	6
Fresh Water Capacity	50 gal.
Gray Tank Capacity	45 gal.
Black Tank Capacity	30 gal.



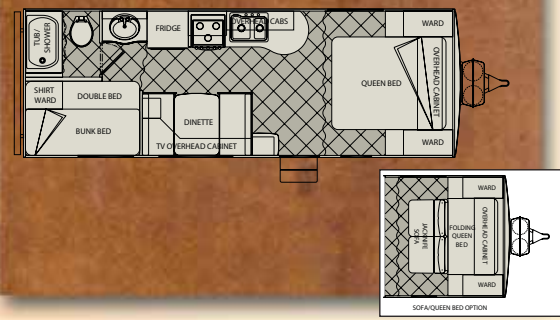
Opposite View ▶





Opposite View ▶

Specifications	257BH
Overall Length	26'8"
Overall Width	8'
Overall Height (w/AC)	10'8"
Axles	2
GVWR	7000 lbs.
Dry Weight	4840 lbs.
Payload	2160 lbs.
Hitch Weight	580 lbs.
Tire Size	15"
Sleeping Capacity	7
Fresh Water Capacity	50 gal.
Gray Tank Capacity	30 gal.
Black Tank Capacity	30 gal.

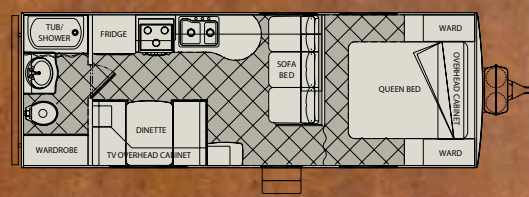


6

Specifications	266RB
Overall Length	26'11"
Overall Width	8'
Overall Height (w/AC)	10'8"
Axles	2
GVWR	7000 lbs.
Dry Weight	4960 lbs.
Payload	2040 lbs.
Hitch Weight	640 lbs.
Tire Size	15"
Sleeping Capacity	6
Fresh Water Capacity	50 gal.
Gray Tank Capacity	30 gal.
Black Tank Capacity	30 gal.



Opposite View ▶



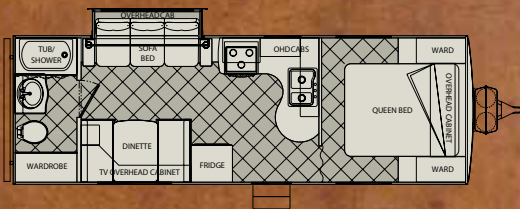
# Tango

## Travel Trailers

### Specifications

## 276RBS

Overall Length	27'11"
Overall Width	8'
Overall Height (w/AC)	10'8"
Axles	2
GVWR	7400 lbs.
Dry Weight	5380 lbs.
Payload	2020 lbs.
Hitch Weight	660 lbs.
Tire Size	15"
Sleeping Capacity	6
Fresh Water Capacity	50 gal.
Gray Tank Capacity	45 gal.
Black Tank Capacity	30 gal.



Opposite View ▶



7



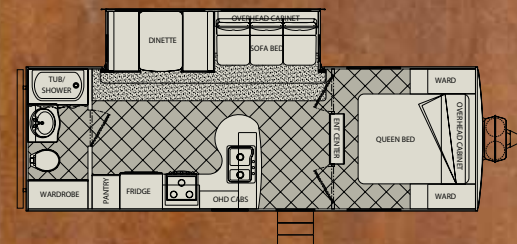
Opposite View ▶



### Specifications

## 286RBS

Overall Length	28'6"
Overall Width	8'
Overall Height (w/AC)	11'2"
Axles	2
GVWR	10,000 lbs.
Dry Weight	6520 lbs.
Payload	3480 lbs.
Hitch Weight	740 lbs.
Tire Size	15"
Sleeping Capacity	6
Fresh Water Capacity	50 gal.
Gray Tank Capacity	45 gal.
Black Tank Capacity	30 gal.



## Specifications **289BH**

Overall Length	29'8"
Overall Width	8'
Overall Height (w/AC)	10'8"
Axles	2
GVWR	7000 lbs.
Dry Weight	5340 lbs.
Payload	1660 lbs.
Hitch Weight	680 lbs.
Tire Size	15"
Sleeping Capacity	9
Fresh Water Capacity	50 gal.
Gray Tank Capacity	30 gal.
Black Tank Capacity	30 gal.



Opposite View ▶



8

## Specifications **299BHS**

Overall Length	30'8"
Overall Width	8'
Overall Height (w/AC)	10'8"
Axles	2
GVWR	7400 lbs.
Dry Weight	5760 lbs.
Payload	1640 lbs.
Hitch Weight	720 lbs.
Tire Size	15"
Sleeping Capacity	9
Fresh Water Capacity	50 gal.
Gray Tank Capacity	45 gal.
Black Tank Capacity	30 gal.



Opposite View ▶





# Tango

## Travel Trailers

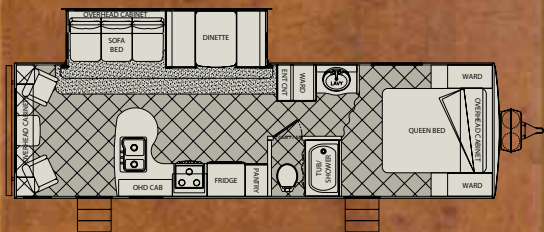
### Specifications

### 306RLSS

Overall Length	31'10"
Overall Width	8'
Overall Height (w/AC)	11'2"
Axles	2
GVWR	10,000 lbs.
Dry Weight	6740 lbs.
Payload	3260 lbs.
Hitch Weight	880 lbs.
Tire Size	15"
Sleeping Capacity	6
Fresh Water Capacity	50 gal.
Gray Tank Capacity	45 gal.
Black Tank Capacity	30 gal.



Opposite View ▶



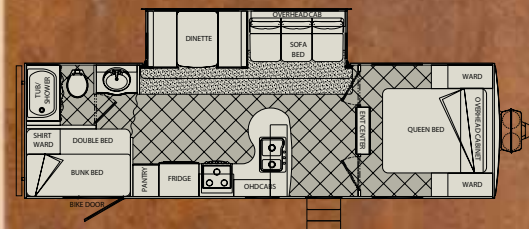
### Specifications

### 309BHSS

Overall Length	31'3"
Overall Width	8'
Overall Height (w/AC)	11'2"
Axles	2
GVWR	10,000 lbs.
Dry Weight	6780 lbs.
Payload	3220 lbs.
Hitch Weight	900 lbs.
Tire Size	15"
Sleeping Capacity	9
Fresh Water Capacity	50 gal.
Gray Tank Capacity	60 gal.
Black Tank Capacity	30 gal.



Opposite View ▶



# Tango

*Integrity and Quality at Every Level*



10

Pacific Coachworks constructs every Tango with industry leading materials to ensure longevity and durability, giving you and your family peace of mind.

## Structural Advantages of the Tango

1. **Engineered Radiused Ceiling Truss** – Ensuring strength, water runoff and reduced weight
2. **Fiberglass Insulation** – Maintains interior comfort in all weather conditions
3. **Seamless Rubber Roof Membrane** – Provides the ideal weather seal and is warranted for 12 years
4. **Durable Linoleum** – Family and pet friendly floors hold up to traffic and are easy to clean
5. **Cambered Steel I-Beam Chassis** – Offers optimal strength, durability and towing performance
6. **Aluminum Framed Walls** – Fully-welded aluminum sets the foundation for the lamination process
7. **High Density Block Foam Insulation** – Precision cut providing unsurpassed structural integrity when laminated
8. **Lamilux 1000 Gel Coat Fiberglass** – Durable and strong exterior walls are easily cleaned
9. **Plywood Layer** – Adds structural reinforcement to the exterior fiberglass panel
10. **OSB Roof Decking** – Is screwed to the roof trusses creating a sturdy foundation for the fully walk-on roof
11. **2 x 3 Floor Joist** – Allows for in-floor furnace ducting and insulation while providing structural integrity
12. **5/8 inch OSB Floor Decking** – Tongue and groove decking screwed and glued to the floor joist, creating a strong and smooth floor
13. **Stylish Centrex Molded Front Cap** – Is aerodynamic and impact resistant

Dark tinted safety glass windows protect interior fabrics from sunlight, provide privacy, and keep the inside of your Tango cooler during hot, sunny days. Windows are mounted using a clamp ring and an automotive style bulb seal, creating a water tight seal.



Tango countertops use solid-surface edging material, bonded to quality plywood with overlapping Formica. This results in a completely sealed edge with no opportunity for moisture or debris to penetrate the surface of your Tango countertop.

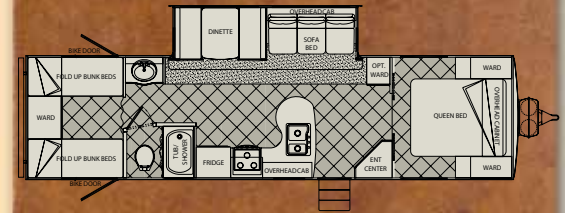
Tango cabinets feature Lumbercore plywood face frame material for high strength, enhanced fastener retention and less weight than particleboard. The cabinets use residential-style pocket-screwed face frame construction for tight joints and long lasting cabinet construction.





Opposite View ▶

Specifications	311BHSS
Overall Length	34'10"
Overall Width	8'
Overall Height (w/AC)	11'2"
Axles	2
GVWR	10,000 lbs.
Dry Weight	7100 lbs.
Payload	2900 lbs.
Hitch Weight	1020 lbs.
Tire Size	15"
Sleeping Capacity	10
Fresh Water Capacity	50 gal.
Gray Tank Capacity	45 gal.
Black Tank Capacity	30 gal.



## Tango Advantage Package

- A&E™ deluxe push button power awning
- Full extension drawers under sofa (SS models and 216, 217, 266, 289)
- Sofa end-table magazine rack with cup holders (S models)
- 30 ft detachable marine grade power cord
- Courtesy lights in exterior storage compartments
- Large "Tango" engraved acrylic/stainless steel entry assist handle
- 30 Watt exterior marine grade speakers
- Storage access doors under dinette seats
- San-T-Flush™ black tank flush out system



Entry assist handle

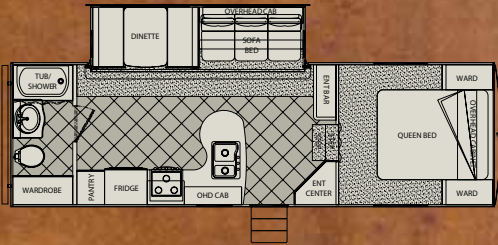


Full extension drawers under sofa

## Specifications

# 2560RBSS

Overall Length	28'0"
Overall Width	8'
Overall Height (w/AC)	11'11"
Axles	2
GVWR	10,000 lbs.
Dry Weight	6740 lbs.
Payload	3260 lbs.
Hitch Weight	1180 lbs.
Tire Size	15"
Sleeping Capacity	6
Fresh Water Capacity	50 gal.
Gray Tank Capacity	45 gal.
Black Tank Capacity	30 gal.



# Tango

## Fifth Wheels



Opposite View ▶



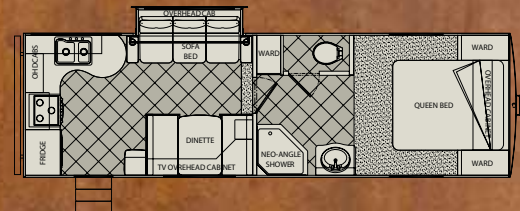
Opposite View ▶



## Specifications

# 2660RKS

Overall Length	28'2"
Overall Width	8'
Overall Height (w/AC)	11'10"
Axles	2
GVWR	10,000 lbs.
Dry Weight	6280 lbs.
Payload	3720 lbs.
Hitch Weight	1000 lbs.
Tire Size	15"
Sleeping Capacity	6
Fresh Water Capacity	50 gal.
Gray Tank Capacity	45 gal.
Black Tank Capacity	30 gal.

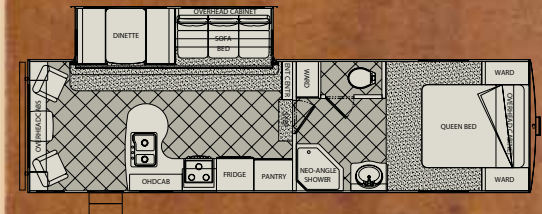




Opposite View ▶

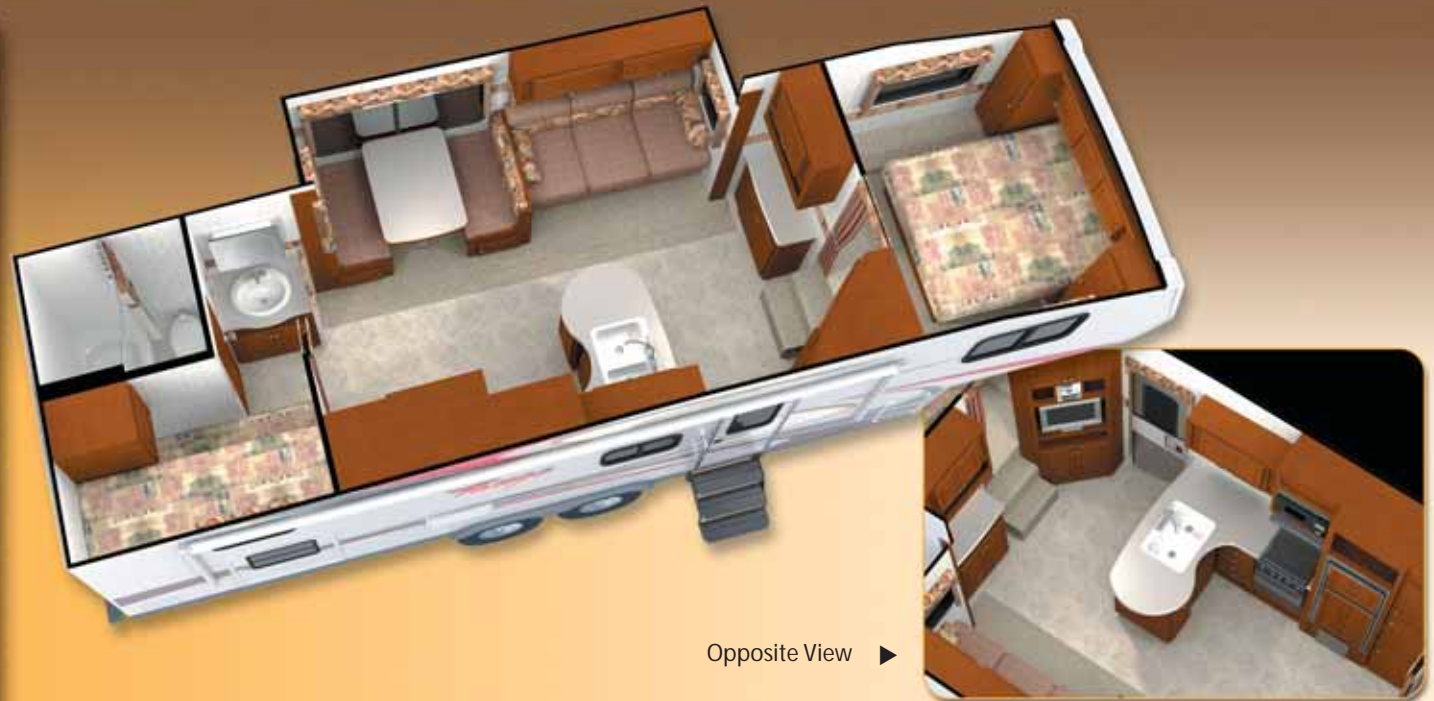
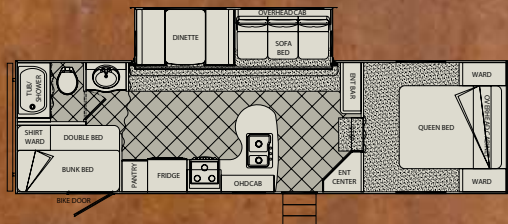
**Specifications 2760RLSS**

Overall Length	31'4"
Overall Width	8'
Overall Height (w/AC)	11'11"
Axles	2
GVWR	10,000 lbs.
Dry Weight	7300 lbs.
Payload	2700 lbs.
Hitch Weight	1280 lbs.
Tire Size	15"
Sleeping Capacity	6
Fresh Water Capacity	50 gal.
Gray Tank Capacity	45 gal.
Black Tank Capacity	30 gal.



**Specifications 2790BHSS**

Overall Length	30'9"
Overall Width	8'
Overall Height (w/AC)	11'11"
Axles	2
GVWR	10,000 lbs.
Dry Weight	7100 lbs.
Payload	2900 lbs.
Hitch Weight	1220 lbs.
Tire Size	15"
Sleeping Capacity	9
Fresh Water Capacity	50 gal.
Gray Tank Capacity	60 gal.
Black Tank Capacity	30 gal.



Opposite View ▶



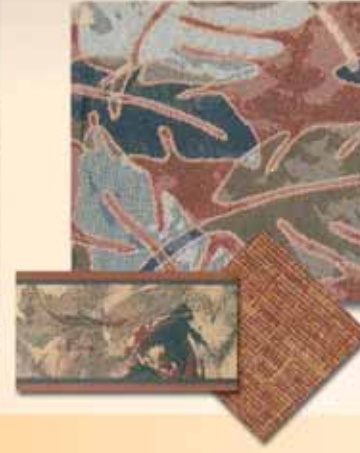
289BH shown in Quatro Copper decor

Customize your Tango travel trailer or fifth wheel to fit your style. Select from three different designer decor packages.

Quatro Copper



Redwood



Wasabi



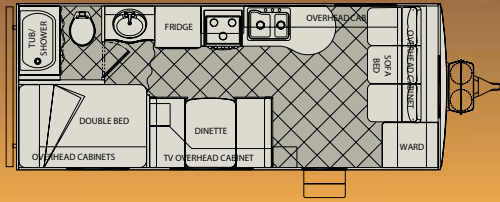
2560RBSS shown in Wasabi decor



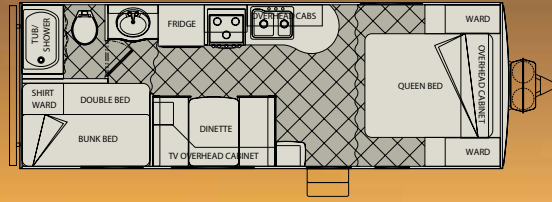
309BHSS shown in Redwood decor

# Tango

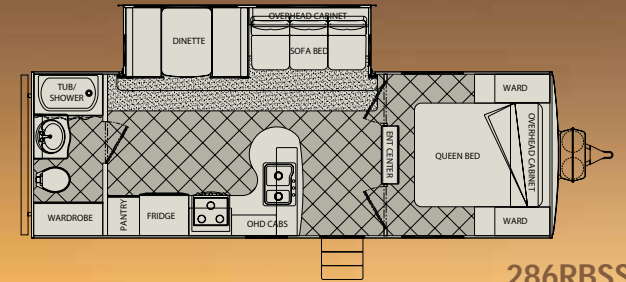
## Travel Trailer & Fifth Wheel



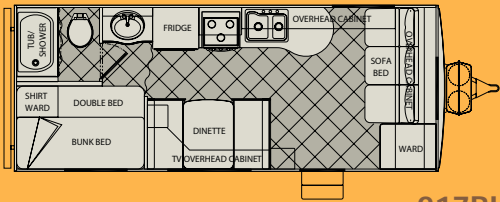
216CB



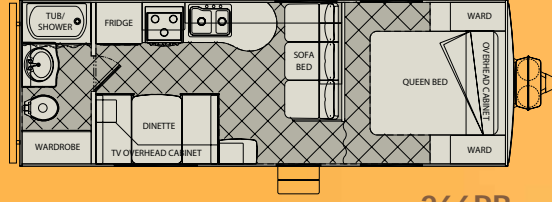
257BH



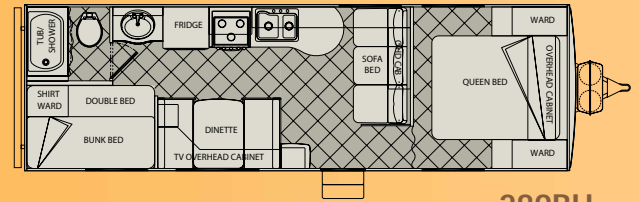
286RBSS



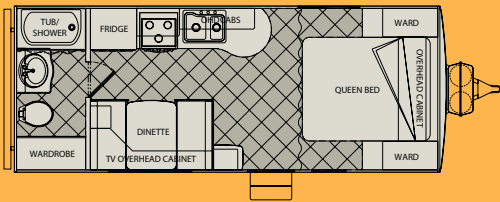
217BH



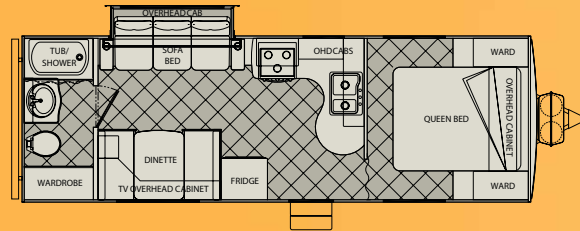
266RB



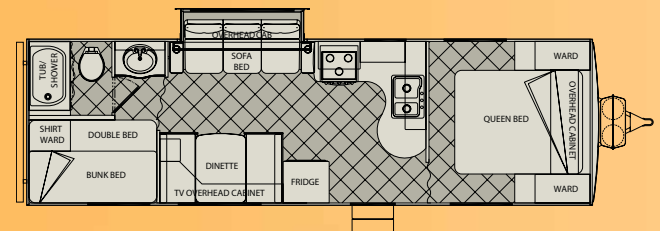
289BH



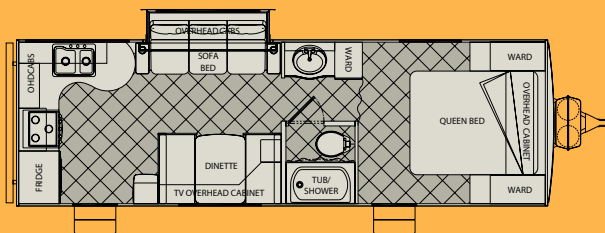
224RB



276RBS



299BHS



256RKS



SOFA/QUEEN BED OPTION

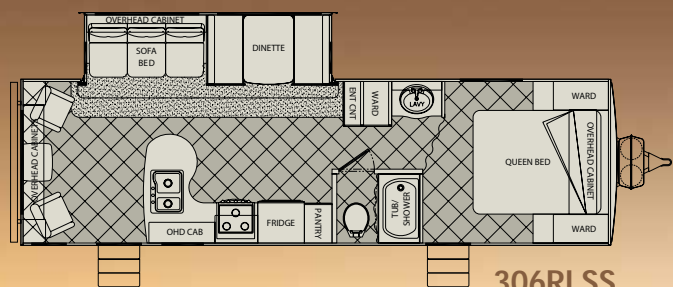


224RB & 257BH Sofa/Queen Bed Option

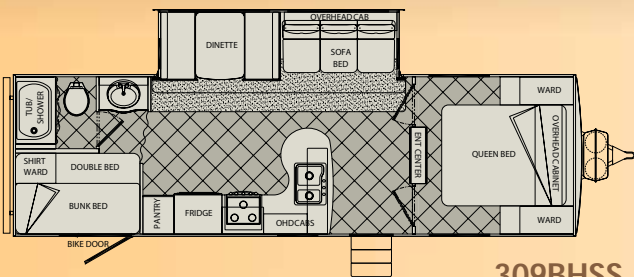
Specifications	216CB	217BH	224RB
Overall Length	23'10"	23'10"	23'11"
Overall Width	8'	8'	8'
Overall Height (w/AC)	10'8"	10'8"	10'8"
Axles	2	2	2
GVWR	7000 lbs.	7000 lbs.	7000 lbs.
Dry Weight	4500 lbs.	4500 lbs.	4500 lbs.
Payload	2500 lbs.	2500 lbs.	2500 lbs.
Hitch Weight	580 lbs.	580 lbs.	520 lbs.
Tire Size	15"	15"	15"
Sleeping Capacity	6	7	4
Fresh Water Capacity	50 gal.	50 gal.	50 gal.
Gray Tank Capacity	30 gal.	30 gal.	30 gal.
Black Tank Capacity	30 gal.	30 gal.	30 gal.



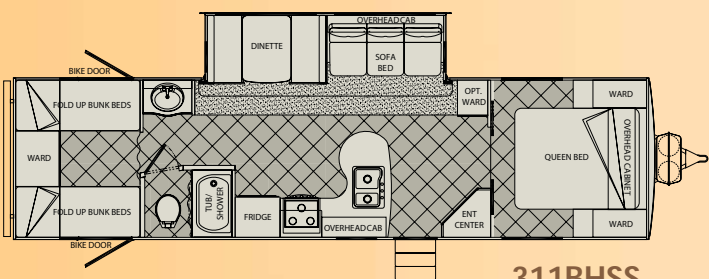
# Floor Plans



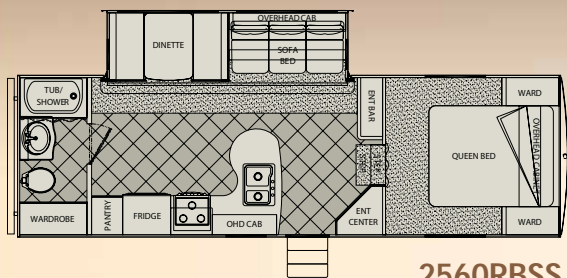
306RLSS



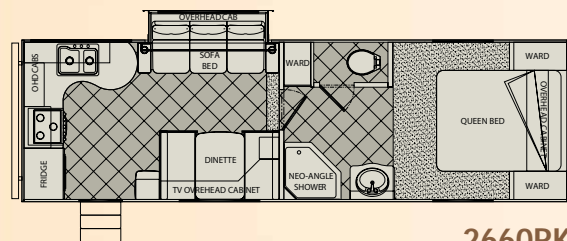
309BHSS



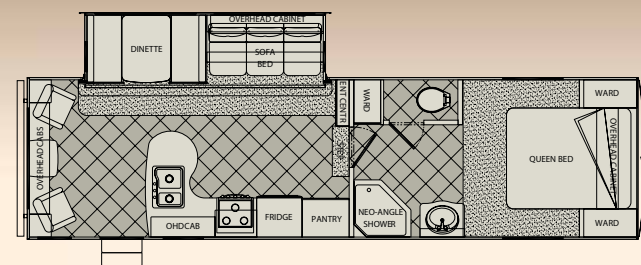
311BHSS



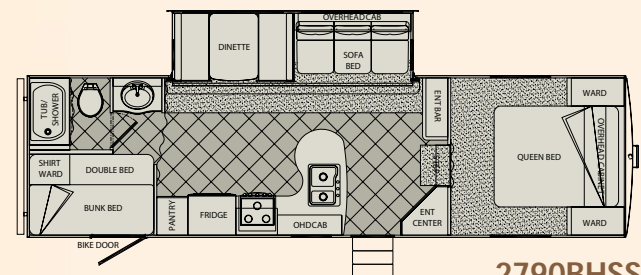
2560RBSS



2660RKS



2760RLSS



2790BHSS

256RKS	257BH	266RB	276RBS	286RBSS	289BH	299BHS	306RLSS	309BHSS	311BHSS	2560RBSS	2660RKS	2760RLSS	2790BHSS
29'0"	26'8"	26'11"	27'11"	28'6"	29'8"	30'8"	31'10"	31'3"	34'10"	28'0"	28'2"	31'4"	30'9"
8'	8'	8'	8'	8'	8'	8'	8'	8'	8'	8'	8'	8'	8'
10'8"	10'8"	10'8"	10'8"	11'2"	10'8"	10'8"	11'2"	11'2"	11'2"	11'11"	11'10"	11'11"	11'11"
2	2	2	2	2	2	2	2	2	2	2	2	2	2
7400 lbs.	7000 lbs.	7000 lbs.	7400 lbs.	10,000 lbs.	7000 lbs.	7400 lbs.	10,000 lbs.	10,000 lbs.	10,000 lbs.	10,000 lbs.	10,000 lbs.	10,000 lbs.	10,000 lbs.
5500 lbs.	4840 lbs.	4960 lbs.	5380 lbs.	6520 lbs.	5340 lbs.	5760 lbs.	6740 lbs.	6780 lbs.	7100 lbs.	6740 lbs.	6280 lbs.	7300 lbs.	7100 lbs.
1900 lbs.	2160 lbs.	2040 lbs.	2020 lbs.	3480 lbs.	1660 lbs.	1640 lbs.	3260 lbs.	3220 lbs.	2900 lbs.	3260 lbs.	3720 lbs.	2700 lbs.	2900 lbs.
520 lbs.	580 lbs.	640 lbs.	660 lbs.	740 lbs.	680 lbs.	720 lbs.	880 lbs.	900 lbs.	1020 lbs.	1180 lbs.	1000 lbs.	1280 lbs.	1220 lbs.
15"	15"	15"	15"	15"	15"	15"	15"	15"	15"	15"	15"	15"	15"
6	7	6	6	6	9	9	6	9	10	6	6	6	9
50 gal.	50 gal.	50 gal.	50 gal.	50 gal.	50 gal.	50 gal.	50 gal.	50 gal.	50 gal.	50 gal.	50 gal.	50 gal.	50 gal.
45 gal.	30 gal.	30 gal.	45 gal.	45 gal.	30 gal.	45 gal.	45 gal.	60 gal.	45 gal.	45 gal.	45 gal.	45 gal.	60 gal.
30 gal.	30 gal.	30 gal.	30 gal.	30 gal.	30 gal.	30 gal.	30 gal.	30 gal.	30 gal.	30 gal.	30 gal.	30 gal.	30 gal.

NOTE: Lengths are taken from bumper to hitch. Height includes A/C. Dry weights include Value and Advantage Packages.

# Tango Features



Tango bathrooms offer many features to make you feel at home. With large sinks, residential height countertops and a minimum 6'9" interior height throughout, you will enjoy the spacious feel of your Tango as you get ready for your day of adventure.

Our durable injection molded tubs provide a strong base and resist cracking. The skylight overhead yields welcomed headroom and creates a bright environment.



With full length mattresses made with 4" high density foam, campers of all ages sleep in comfort. The Tango upscale interior design is enhanced by the custom fabric covers that match the decor of each Tango.



Extend your camping season with a heated, insulated and enclosed underbelly.

The Tango comes with reliable Goodyear tires and stylish rust proof aluminum wheels. E-Z lube axles make maintenance a snap.



Overstuffed sofas offer the look and feel of residential furniture for more comfortable camping.



The large quantity of drawers in every Tango offer more practical storage, allowing campers to conveniently store, organize, and access their items. Raised panel cabinets throughout provide a luxurious appearance.



More linoleum and minimal carpets mean easier cleaning of spills and tracked in dirt.



Large 60/40 split sinks with high rise goose-neck faucets let you fill pots, pitchers and buckets for ultimate utility.



Every Tango kitchen features unsurpassed counter space for meal preparation, drying dishes and using appliances. The signature pull-out utility drawer houses a removable trash can with enough room for trash bags and cleaning supplies, keeping them out of sight.



Heavy duty steel ball bearing guides make using the drawers throughout every Tango convenient and effortless.



A&E™ push button electric awning

We have included the highest quality appliances that only the Dometic™ family of products can provide. These featured items have been selected and installed into each Tango to make your camping as enjoyable as possible..



Dometic™ 1.2 cu. ft. turntable microwave



Sealand™ porcelain foot-flush toilet



Duo-Therm™ 13,500 or 15,000 BTU Air Conditioner



Dometic™ double door refrigerator with automatic LPG-electric changeover

# Tango Testimonials

Here are some comments from our satisfied customers that are finding out just how much the Tango has enriched their camping experiences.

"Beautiful... You guys definitely put together one of the nicest looking and well built trailers out there. The interior styling is second to none in my opinion and the use of actual "wood" is what makes them stand out in the crowd. My buddies are going to be drooling when I pull up with this baby!"

– Rob from Alberta  
306RLSS

"We love our Tango. The main adjustment we have had to make is having people in the campground stop and ask us about it (it must be the colors and graphics). The craftsmanship and quality sold us. You can buy something with a 40 year history – or you can buy something that's well built with some fresh thinking – an upstart company with experienced owners are going to pay far more attention to customer service and quality as they push out their products"

– Marty and Heather from Alberta  
257BH

"The build quality is very nice... I have yet to see a better built trailer."

– Kent from Nevada  
276RBS

"We found the coach to be absolutely immaculate. The quality and workmanship really show through and you and your entire staff should be as proud as we are showing off our new rig to our friends."

– Dean from Nevada  
266RB

"It is an absolute pleasure to pull and park, and above all, stay in. The prices are right where they should be for the product that you build. Thanks again from a group of EXTREMELY happy campers!"

– Jeff and Tara from Alberta  
257BH



**Pacific  
Coachworks™**

549 Rivera Street  
Riverside, CA 92501

Office: 951.686.7294 • Fax: 951.686.2133  
www.pacificcoachworks.com

*Pacific Coachworks thanks Dutton Motors of Riverside for providing a demonstration GMC truck for photography.*

All specifications are subject to change without notice or obligation. Some features shown on plans may be optional. This brochure applies to all Tango models built after 1/08.

Your Local Dealer