

SCEPTER®
2009



HOLIDAY RAMBLER®

This is Living®



Scepter



ENJOY THE VIEW.

So much to see and no better way to see it. Introducing the 2009 Scepter. This year we've combined more power and luxury than ever before. Throughout the coach you'll find beautiful gloss finished cabinetry and gleaming polished solid surface countertops. Ultraleather™ seats highlight the cockpit, and behind the wheel you'll find everything you need to command the Scepter's new Cummins® ISL 425 HP engine. And when you're ready for views outside the coach, nothing beats the enormous Panaview™ 1-piece windshield.









BRIGHTER DAYS. SWEETER DREAMS.

The Scepter is all about having things on your terms. From your morning coffee in your favorite mug to a good night's sleep in your own bed. Spacious cabinet storage lets you stock the kitchen with all your essentials, and top-of-the line appliances make every meal a breeze. You'll enjoy the ultimate convenience of the Scepter's legless solid surface dinette

with stylish upholstered chairs. In the bedroom an oversized wardrobe helps keep things neat and tidy, and both the galley and bath feature a decorative tile backsplash. A king bed comes standard on the 42-foot models, and on all models, you have the option of a Select Comfort air mattress, allowing you to set the right level of firmness for you.



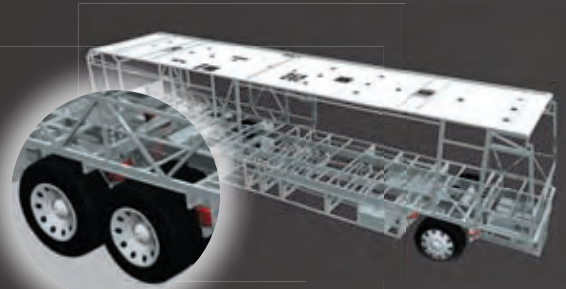


THE ROADMASTER DIFFERENCE

Turn the key of the 2009 Scepter and prepare to experience the best-in-class performance of the Roadmaster chassis. Roadmaster is the only chassis manufacturer with a 100 percent commitment to only producing chassis for luxury motorhomes. In fact, every Roadmaster chassis is custom built for the exact model and floorplan. That means you'll enjoy a smoother ride, superior front-to-rear balance and unbeatable strength and reliability. We encourage you to take a few minutes to learn more about the many features that put Roadmaster in a class by itself.

DISTINGUISHING FEATURES.

With bold new graphics and deluxe full-body paint, the Scepter stands apart from the crowd. From the high-quality awning package to the polished aluminum wheels to the full-length Holiday Rambler mud flap, every detail helps create a lasting impression. As you can see below, a full pass-through slide-out tray and side-hinged baggage doors eliminate the hassles of retrieving items from the storage bays.



RR10S Series TAG AXLE

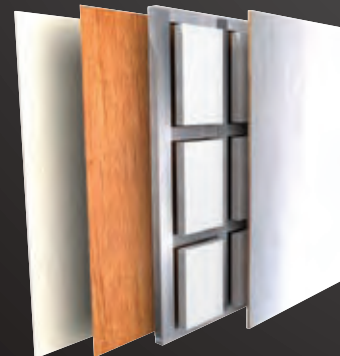
(found on 42' floorplans) The tag axle lifts for added maneuverability in tight spots. It's just one more great feature from Holiday Rambler that adds to your coach's overall performance and most importantly, your safety.

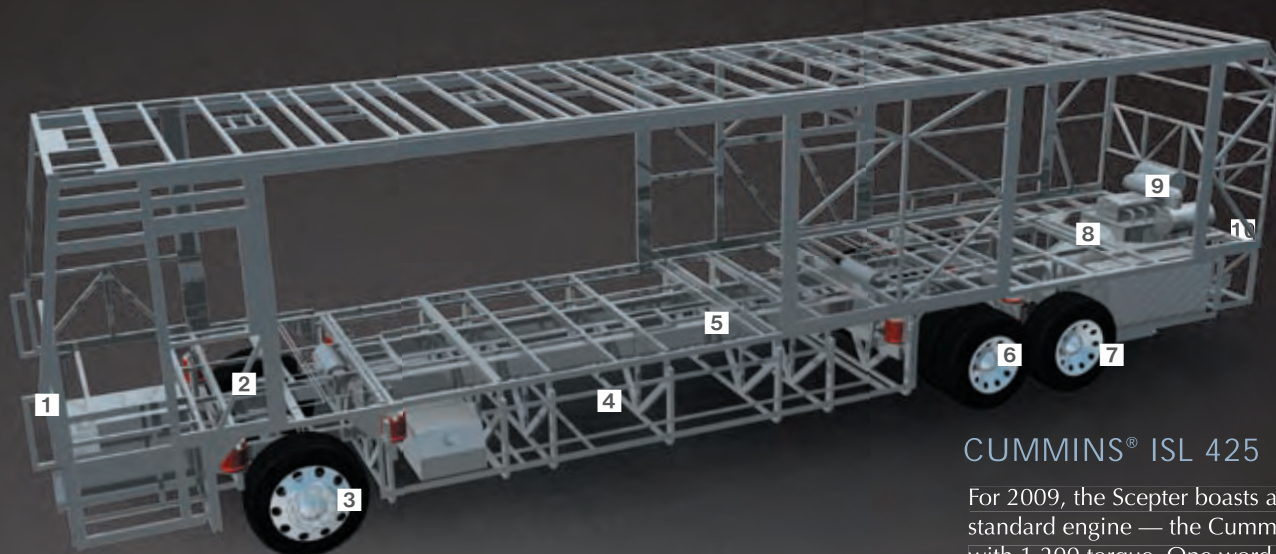


5-LAYER LAMINATED GEL COAT FIBERGLASS SIDEWALLS

(left to right)

- Wallpaper
- 1/8" Iuauun
- 1-1/2" x 1-1/2" square tubular aluminum frame
- High-performance thermal insulation
- High-gloss gel coat fiberglass exterior





CUMMINS® ISL 425

For 2009, the Scepter boasts a powerful new standard engine — the Cummins® ISL 425 HP with 1,200 torque. One word says it all. Vroom.

ROADMASTER RR10S—SERIES CHASSIS AVAILABLE ON THE 42DSQ, 42PDQ, 42KFQ ROADMASTER RR8S—SERIES CHASSIS AVAILABLE ON THE 38PDQ, 40QDP

- 1** Equipped with a steel firewall and steel stepwell for added safety.
- 2** Three monitored leveling sensors (two in the rear, one in the front) continually adjust the air pressure within each air bag to maintain a level ride and eliminate nosediving, weight transfer, and floating on curved roads.
- 3** Automatic Traction Control (ATC) eliminates wheel slippage in slick conditions and heightens control. The Anti-Lock Braking System (ABS), with front disc brakes and rear drum brakes, gives you superior stopping power, especially on steep grades. Together, these sophisticated systems offer the very best safety on the road.
- 4** Our exclusive raised rail design provides for larger full pass-through storage bays with flush floors.
- 5** Frame rails are constructed of 3-1/2" by 6-1/4" by 3/8" 100,000 PSI steel for greater strength; a side-mounted aluminum radiator and intercooler reduce weight, won't rust, and deliver better heat transfer than steel cooling components.

- 6** The Cushion Air Glide suspension features 10 gas-charged shocks and 10 air bags, 8 of which are outboard mounted (RR10S). The RR8S-Series chassis features 8 gas-charged shocks and 8 outboard-mounted air bags.
- 7** Goodyear tires 295/80R/22.5
- 8** Allison® 3000 MH 6-speed World Transmission with electronic shifter. Our exclusive use of synthetic transmission fluid allows for up to three-year maintenance

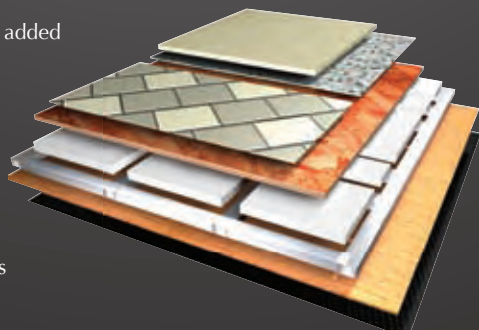


- intervals for the Allison® transmission.
- 9** Cummins® ISL 425 HP diesel engine.
- 10** A 10,000 lb. tow hitch rating is the highest in its class. Prewired for supplemental braking system that works with your tow vehicle.

6-LAYER FLOORING

(top to bottom)

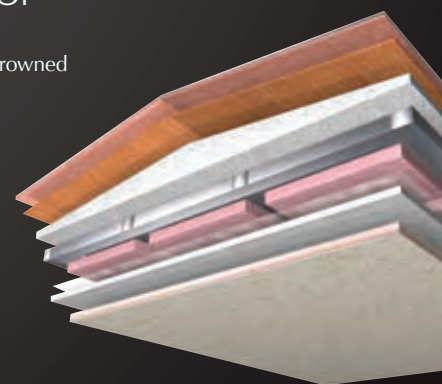
- Carpet pad and carpeting or tile
- Structurwood™ for added reliability
- High-performance thermal insulation
- 1-1/2" x 1-1/2" square tubular frame
- 1/8" luaun
- Waterproof Darco underbelly provides moisture barrier



9-LAYER MOLDED FIBERGLASS ALL-SEASON FOAM INSULATED ROOF

(top to bottom)

- One-piece 1/4" fiberglass roof is crowned for easy water runoff
- Luaun backing
- 2-1/2" thick tapered bead foam insulation
- 1-1/2" x 3" aluminum I-beam superstructure on 16" centers filled with 3" fiberglass insulation
- Vapor barrier
- Structure foam provides added thermal barrier
- 1/2" bead foam insulation
- Foam padding for extra insulation
- Easy-to-clean padded vinyl ceiling



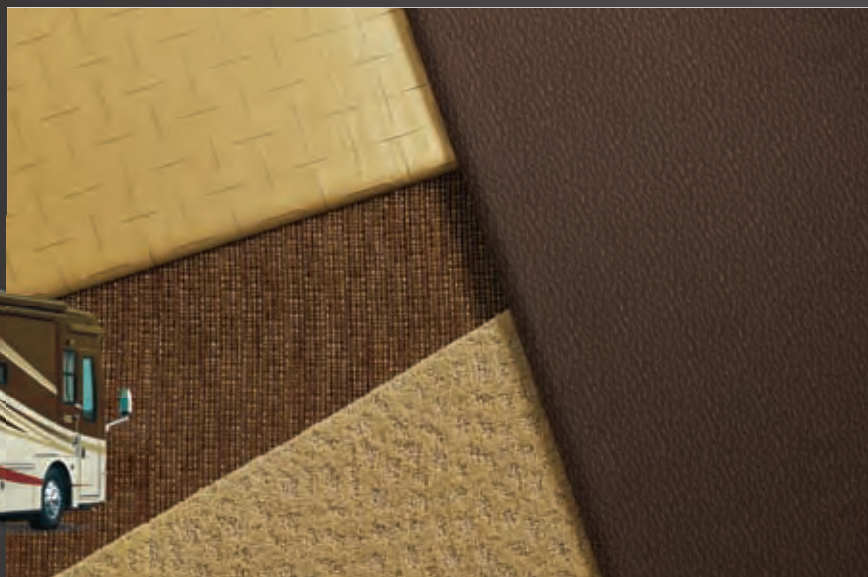


Scepter®
2009

COLORS AND PATTERNS IN PERFECT HARMONY.

The 2009 Scepter makes a bold statement wherever you go with new, deluxe full-body paint graphics. Whichever color you choose, you'll marvel at the luxurious fabrics and beautifully coordinated

details. We also call your attention to the stunning gloss finished cabinetry selections — each with stylish satin nickel hardware. Put it all together and you've created a masterpiece all your own.



RASPBERRY TRUFFLE II



SATIN SABLE II



NATURAL OAK



STAINED OAK



NATURAL CHERRY



STAINED CHERRY



SPICED MAPLE

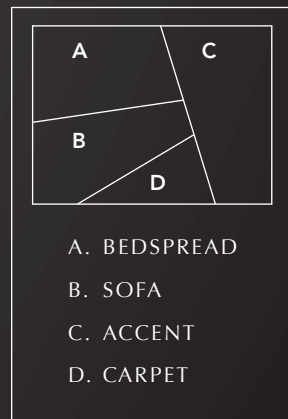


RIVERSTONE



Manufactured in, not added on. For added protection against stains, soil repellent is applied to virtually all upholstery fabric during the finishing process for superior coverage.*

*Brand and application of upholstery fabric protection may vary depending on date recreational vehicle was manufactured.





BODY CONSTRUCTION: FEATURES

- Aluminum Superstructure
- Seamless One-Piece Molded Crowned Fiberglass Roof
- Interior Height 84"
- Foam Insulated Floor Framing with 3-Ply Underbelly
- Laminated Smooth Gel Coat Fiberglass Exterior Walls
- Front Molded Fiberglass Cap
- Rear Molded Fiberglass Cap with Integrated Air Intake
- Panaview™ 1-Piece Front Windshield
- One-Piece Generator Access Door
- Electric Flush-Mounted Stepwell Cover
- Aluminum Framed Laminated Floor on Steel Trusses
- Laminated Structurwood™ Flooring
- Dual Head Power-Controlled Heated Exterior Mirrors with Turn Indicator Lights
- Docking Lights (4)
- Side-Hinged Baggage Doors with Chrome Door Latches
- 3M Film Front Mask
- Full-Length Holiday Rambler Mud Flap
- Storage Bay Slide-Out Tray — Pass-Through (Bay 2)
- Ozite Lined Pass-Through Storage Compartments
- Flush-Mounted Metal Fuel Doors
- Deluxe Full-Body Paint
- Roof Ladder
- Undercoating

OPTIONS

- Super Savings Package: 3-Camera Rear Vision System with Audio and Adjustable Center Camera, In-Dash Driver's Message Center, Solid Surface Kitchen Sink, Auto Generator Start, RV Sani-Con Tank Drainage System, Water Hose Reel, Power Cord Reel
- Storage Bay Slide-Out Tray — Pass-Through (Bay 3) (N/A: 38PDQ)

CHASSIS/ENGINE/SUSPENSION: FEATURES

- Roadmaster RR8S Series Chassis (38PDQ, 40QDP)
- Roadmaster RR10S Series Chassis (42PDQ, 42DSQ, 42KFQ)
- Cummins® ISL 425 HP (538 cu. in./8.9L) Electronic Engine with Allison® 3000 MH 6-Speed World Transmission and Electronic Shifter
- Torque: 1,200 lbs./ft. Max. Net at 1,300 RPM
- Aluminum Side-Mounted Radiator with CAC Cooler
- Dual Fuel Fill
- 160 Amp Alternator
- Rear Axle Ratio: 4.30:1
- Tires 295/80R/22.5
- Polished Aluminum Wheels
- Cushion Air Glide Suspension with Eight Outboard-Mounted Air Bags and Eight Shock Absorbers (38PDQ, 40QDP)
- Cushion Air Glide Suspension Features Ten Gas-Charged Shock Absorbers and Ten Air Bags, Eight of Which Are Outboard Mounted (42PDQ, 42DSQ, 42KFQ)
- Anti-Lock Braking System with Front Disc Brakes and Rear Drum Brakes
- Tag Axle with Anti-Lock Braking System (42PDQ, 42DSQ, 42KFQ)
- Automatic Traction Control

- Cummins® Variable Geometry Turbo Exhaust Brake
- Auto Slack Adjusters on Brakes
- Prewire for Supplemental Braking System
- Engine Block Heater
- Hydraulic Leveling System
- 10,000 Lb. Hitch Receiver with Dual Connector 7/4-Pin

OPTIONS

- Air Leveling System (Replaces Standard Hydraulic Levelers)

COCKPIT: FEATURES

- Automotive Dash with Oxford Burl Instrumentation Panel
- Pilot and Co-Pilot Pull-Down Sunshades
- Color Rear Vision System with Audio and Adjustable Camera
- In-Dash AM/FM/CD Stereo Radio with Sirius-Ready Compatibility, iPod Control, Aux-in-Connection, SD Card Slot and Weather Band
- CB Prep with Antenna
- Adjustable Brake and Accelerator Pedals
- Lighted VIP Smartwheel® Multiplex Steering Wheel (with Controls for Windshield Wipers, ICC and Cruise Control)
- Audible Turn Signals
- Roof-Mounted Dual Trumpet Air Horns
- Ultraleather™ Six-Way Power Pilot Seat and Co-Pilot Seat with Power Footrest and Full Wrap Skirt
- Carpeted Driver and Passenger Floor Mats

OPTIONS

- 10-Disc CD Changer
- Interior Solar Privacy Sunscreen
- In-Dash Driver's Message Center
- 3-Camera Rear Vision System with Audio and Adjustable Center Camera
- GPS Navigation System
- Sirius Satellite Radio System (Requires Subscription)
- Auxiliary Blower

APPLIANCES AND ACCESSORIES: FEATURES

- Norcold 12 Cu. Ft. 2-Way 4-Door Refrigerator with Ice Maker
- High-Output 3-Sealed-Burner Cooktop without Oven
- Spacesaver Convection Microwave with Touch Control
- 37" Flatscreen LCD TV in Living Area Hutch (Replaces Front Cockpit TV) (42KFQ)
- 32" Flatscreen LCD TV in Front Cockpit Overhead (N/A: 38PDQ, 42KFQ)
- 32" Flatscreen LCD TV in Living Area Hutch (38PDQ)
- 26" LCD TV in Bedroom
- Home Theater System
- TV Antenna with Booster
- Exterior Hook-Ups for DSS Dish and Cable
- Digital Satellite System Prep
- Washer/Dryer Prep

OPTIONS

- Dometic Sidewise 14 Cu. Ft. 2-Way Refrigerator with Water and Ice Dispenser in the Door
- Stainless Steel Package (Includes Stainless Steel Refrigerator and Microwave)
- Combination Washer/Dryer

- Pre-wire cargo bay for HD Satellite hook-up
- Stackable Washer/Dryer (N/A: 42KFQ)
- 37" TV in Front Cockpit Overhead (N/A: 38PDQ, 42KFQ)
- 26" Flatscreen LCD TV in Front Overhead (38PDQ)
- 46" Flatscreen LCD TV Mounted in Living Room Hutch (42KFQ)
- Bedroom DVD Player with IR Repeater
- Central Vacuum
- R5 KVH In-Motion Satellite
- Multi-Satellite HD KU/KA Dish (Does Not Include Receiver)
- Exterior Entertainment Center (26" LCD/AM/FM/CD Radio with Two Speakers) (N/A: 40QDP, 42KFQ)

INTERIOR: FEATURES

- Gloss Finished Cabinetry: Stained Oak or Natural Oak
- Solid Wood Raised Panel Cabinet Doors
- Crown Molding in Bedroom and Living Area
- Lined Cabinet Shelves
- Heavy-Duty Ball Bearing Drawer Guides
- Refrigerator Raised Panel Hardwood Inserts
- Satin Nickel Finish on Hardware and Fixtures Throughout
- Radius Polished Solid Surface Kitchen Countertop with 70/30 Stainless Steel Sink with Two Sink Covers
- Roll-Out Polished Solid Surface Kitchen Countertop Extension (N/A: 38PDQ)
- Decorative Tile with Corian® Molding Backsplash in Galley and Lavatory
- Polished Solid Surface Bathroom Countertop with Integrated Sink
- Kitchen Overhead Cabinets with Adjustable Shelf
- Ceramic Tile Flooring in Kitchen and Bathroom
- Designer Carpeting in Living Area and Bedroom
- Soft Touch Padded Vinyl Ceiling
- Fabric Valances with Decorative Crown Molding Throughout
- Oversized Rear Wardrobe Closet with Satin Nickel Framed Doors
- Bedroom Nightstands with Polished Solid Surface Countertops
- Bedroom Dresser with Polished Solid Surface Countertop and Integrated Hamper
- Bedroom Dresser/Wardrobe at the Foot of Bed
- Bedspread and Decorative Pillows
- Day/Night Pleated Blackout Shades in Living Area and Bedroom, Mini Blinds in Kitchen and Private Bath
- Soil Repellent Protection on Fabric

OPTIONS

- Decors: Raspberry Truffle II, Satin Sable II, Riverstone
- Gloss Finished Cabinetry: Stained Cherry, Natural Cherry, Spiced Maple
- Full-Tile Living Room
- Solid Surface Kitchen Sink

FURNITURE: FEATURES

- Solid Surface Dinette Table with Two Dinette Chairs and Two Folding Chairs
- Roadside: Fabric Jackknife Sofa
- Curbside: Fabric Jackknife Sofa (N/A: 38PDQ)
- Curbside: Fabric Loveseat (38PDQ)
- Queen Bed (60" x 80") with Polished Solid Surface Nightstands (38PDQ, 40QDP)
- King Bed (72" x 80") (42PDQ, 42DSQ, 42KFQ)
- Roadside: Fabric Hide-A-Bed Sofa with Air Mattress (N/A: 42KFQ)
- Roadside: Leather Hide-a-Bed with Air Mattress (N/A: 42KFQ)
- Roadside: Leather/Fabric Sectional Booth Dinette Ensemble (N/A: 40QDP)
- Roadside: Leather Sectional Booth Dinette Ensemble (N/A: 40QDP)
- Roadside: Wraparound Computer Desk with Ultraleather™ Euro-Recliner (N/A: 38PDQ, 40QDP, 42DSQ)
- Roadside: Leather J-Lounge with Drawer (40QDP, 42KFQ)
- Roadside: Leather/Fabric J-Hide-A-Bed with Air Ensemble (N/A: 40QDP, 42KFQ)
- Curbside: Leather Loveseat (38PDQ)
- Curbside: Fabric Hide-A-Bed Sofa with Air Mattress (N/A: 38PDQ, 42DSQ)
- Curbside: Leather Hide-A-Bed Sofa with Air Mattress (N/A: 38PDQ, 42DSQ)
- Curbside: Leather Jackknife Sofa (N/A: 38PDQ)
- Curbside: Leather J-Lounge with Drawer (N/A: 38PDQ)
- Curbside: Wraparound Computer Desk with Ultraleather™ Euro-Recliner (40QDP)
- Curbside: Leather/Fabric Sectional Booth Dinette Ensemble (40QDP)
- Curbside: Leather Sectional Booth Dinette Ensemble (40QDP)
- Curbside: Leather J-Hide-A-Bed with Air Ensemble (40QDP)
- Curbside: Leather/Fabric J-Hide-A-Bed with Air Ensemble (40QDP)
- Two Folding Chairs with Dinette Ensemble

OPTIONS

- King Bed with One Nightstand (40QDP)
- Queen Bed Select Comfort Air Mattress
- King Bed Select Comfort Air Mattress (N/A: 38PDQ)
- Roadside: Leather Jackknife Sofa



ELECTRICAL SYSTEMS AND LIGHTS: FEATURES

- 50 Amp 12V Distribution Panel and Power Cord
- Battery Maintainer
- Onan® 8.0 kW Quiet Diesel Generator on Manual Slide-Out (38PDQ, 40QDP)
- Onan® 10.0 kW QD Generator on Manual Slide-Out (N/A: 38PDQ, 40QDP)
- Energy Management System
- Slide-Out Battery Tray
- Four 6V Deep Cycle House Batteries
- Two 12V Heavy-Duty Chassis Batteries
- Battery Disconnect Switch at Front Door
- Battery Boost Switch in Cockpit
- 2000 Watt Inverter
- Porch Light
- Lighted Exterior Power Entry Step
- Lighted Interior Entry Steps
- Lights in Outside Storage Compartments
- 120V Receptacles in Outside Storage Compartment
- Underhood Utility Light
- Multiplex 12V Wiring for All Lighting Throughout Interior of Coach
- Pilot and Co-Pilot Map Lights
- Fluorescent Light under Kitchen Overhead
- Fluorescent Ceiling Lights Throughout
- Satin Nickel Decorative Lighting in Living Room, Dinette and Bath
- Convenience Center Located in Hallway
- Prewire for Solar Panel

OPTIONS

- Auto Generator Start
- 50 Amp 120V Distribution Panel and Power Cord Reel
- 2000 Watt Pure Sine Wave Inverter
- Solar Panel

PLUMBING AND LP SYSTEMS: FEATURES

- Demand Water System and Water Pump
- 10-Gallon LP Gas/Electric Water Heater with Electronic Ignition
- Single-Handle Satin Nickel Kitchen Faucet with Pullout Sprayer
- Central Water Filtration System
- Two-Handle Satin Nickel Bath Faucet
- Single-Handle Satin Nickel Shower Faucet with Slide Bar and Shut-Off Valve at Shower Head
- Exterior Tank Monitoring Gauges
- Water Heater Bypass Valve
- Water Pump Switch in Convenience Center, Service Bay and Bath
- China Toilet
- China Toilet Electronic Silent Plus (Rear Bath Only) (42DSQ)
- Shower inside Wet Bay with Hot/Cold Water
- No-Fuss Flush Holding Tank Rinsing System
- Gravity and Pressurized Water Fill
- Insulated Systems Compartment with Easy Access to Hook-Up
- Sewer Hose Storage (Deleted When RV Sani-Con Tank Drainage System Is Selected)
- One-Piece Round Shower with Reeded Glass Door (N/A: 42KFQ)
- One-Piece Neo-Angled Shower with Obscured Glass Door (42KFQ)
- Satin Nickel Shower Door Frame with Decorative Glass

OPTIONS

- Power Water Hose Reel
- RV Sani-Con Tank Drainage System
- Electric Automatic Winterization
- Neo-Angled Bathtub

HEATING, VENTS AND AIR CONDITIONING: FEATURES

- Dual 13.5M BTU Roof Air Conditioners with Ducted Air, Heat Pumps and Digital Thermostat Control (38PDQ, 40QDP)
- Three 13.5M BTU Roof Air Conditioners with Wall Thermostat and Heat Pump (N/A: 40QDP)
- Dual Zone Electronic Ignition Furnaces - 51M BTU (One 31M BTU and One 20M BTU)
- Electronic AC/Heat Climate Control System
- In-Floor Ducted Heating System (Heat Run to Private Bath)
- 12V Attic Fan in Kitchen, Hall Bath and Private Bath (N/A: 42KFQ)
- 12V Heater in Wet Bay
- Ceiling Fan in Bedroom
- Dual 15M BTU Roof Air Conditioners with Ducted Air, Heat Pumps, and Digital Thermostat Control (38PDQ, 40QDP)
- Two 15M BTU Roof Air Conditioners and One 13.5M BTU Roof Air Conditioner with Wall Thermostats and Heat Pumps (N/A: 40QDP)

OPTIONS

- Aqua-Hot® 450 Water and Heating System

WINDOWS, DOORS AND AWNINGS: FEATURES

- Radius Flush-Mounted Dual Pane Safety Glass Dark Tinted Slider Windows
- Front Entry Door with Air Seal, Removable Screen and Anti-Skid Steps
- Keyless Entry in Grab Handle with Baggage Door Lock Release and Doorbell
- Metal Interior Grab Handle at Entry Door and on Dash across from Passenger Seat
- Eclipse Automatic Patio Awning
- Automatic Front Door Awning
- Topper Slide-Out Awnings Living Area and Bedroom
- Window Awnings on All Windows except Slide-Out Windows under Patio Awning
- Tinted Skylight in Bathroom with Protecta Glaze

OPTIONS

- Apex Automatic Patio Awning with Remote

SAFETY: FEATURES

- Backup Alarm
- Fire Extinguisher
- Deadbolt Lock on Entrance Door
- 120V GFI Protected Circuit
- LP Gas Detector
- Smoke Detector
- Carbon Monoxide Detector
- Driver and Passenger Three-Point Integrated Seatbelts
- Egress Windows

Due to continuous product improvement, please see the website for the latest in standards and options, specifications, and technical data. Go to www.holidayrambler.com.

Weights*	38PDQ	40QDP	42PDQ	42DSQ	42KFO
Gross Vehicle Weight Rating	37,600	37,600	44,600	44,600	44,600
Gross Combined Weight Rating	47,600	47,600	54,600	54,600	54,600
Front Gross Axle Weight Rating	14,600	14,600	14,600	14,600	14,600
Rear Gross Axle Weight Rating	23,000	23,000	20,000	20,000	20,000
Tag Axle Weight Rating (lbs.)	N/A	N/A	10,000	10,000	10,000
Measurements					
Wheelbase	224"	272"	270 1/4"	270 1/4"	270 1/4"
Overall Length	TBD	40' 11"	42' 11"	42' 11"	42' 11"
Overall Height with A/C (w/o DSS option)	12' 10"	12' 10"	12' 10"	12' 10"	12' 10"
Interior Height	84"	84"	84"	84"	84"
Interior Width	96"	96"	96"	96"	96"
Exterior Width	100.5"	100.5"	100.5"	100.5"	100.5"
Tank Capacities** (Gal.)					
Water Heater	10	10	10	10	10
Gray Tank	78	78	78	78	78
Black Tank	44	44	44	44	44
Fresh Tank	100	100	100	100	100
LP Tank ***	31	31	31	31	31
Fuel Tank	130	130	130	130	130

* Towing capacity is limited by GCWR; your vehicle's towing capacity is the difference between the GCWR and the actual vehicle weight, including all water, fuel, passengers and cargo. Your towed vehicle should be equipped with auxiliary brakes if the weight of the towed vehicle exceeds 1,000 lbs. Consult your owner's manual for further towing information.

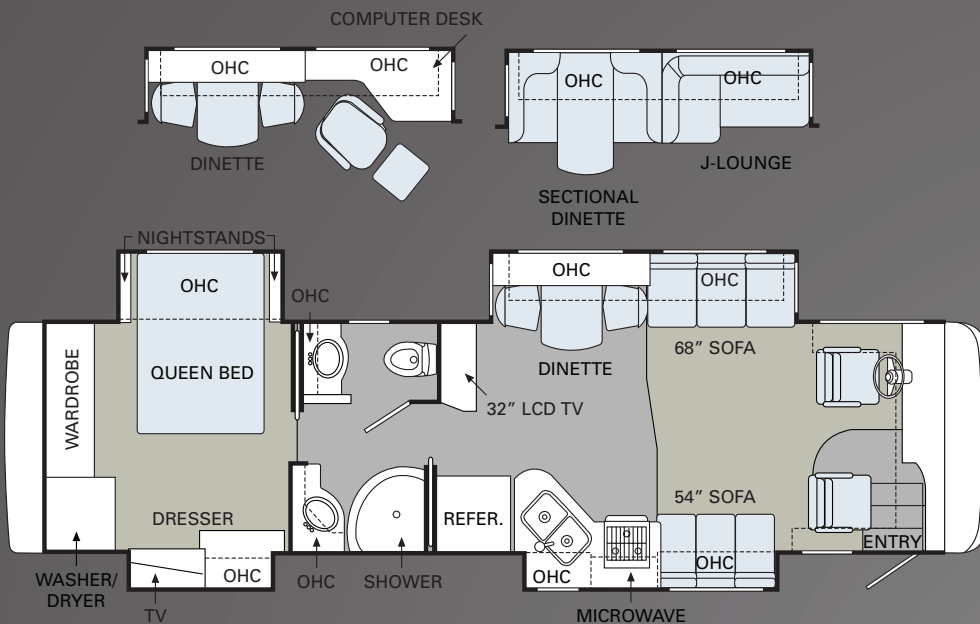
** All tank capacities are estimated based upon calculations provided by the tank manufacturers and represent approximate capacities. The actual "usable capacity" may be greater or less than the estimated capacities based upon fabrication and installation of the tanks.

*** Actual filled LP capacity is 80% of listing due to safety shut-off required on tank.

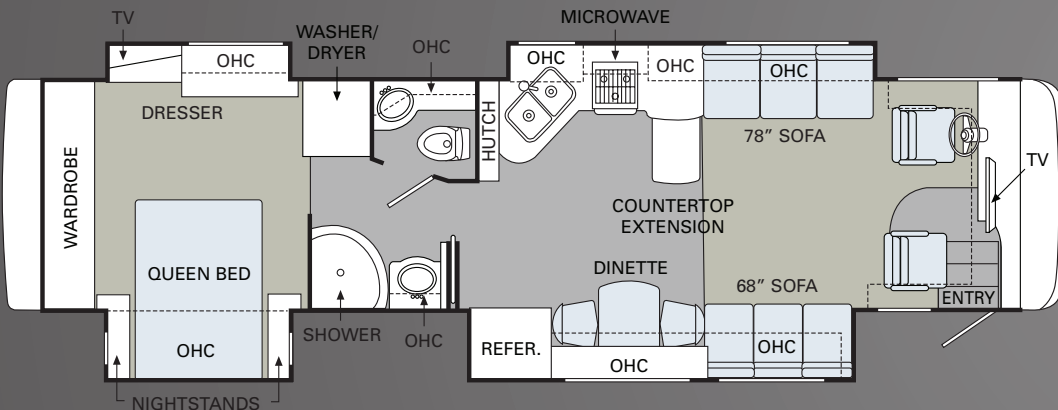
The actual overall length of the recreational vehicle may differ from that indicated in the brochure due to variances in the manufacturing process and/or installed components. The actual length may be greater or less than that indicated. Due to the large variety of options and floorplan arrangements available to our customers, actual weights for each unit can differ significantly. Holiday Rambler provides a weight sticker on each unit we produce which includes that unit's tank capacities and approximate weight. Consult your local Holiday Rambler dealer for unit availability and further information. The information printed in this brochure reflects product design, fabrication, and component parts at the date of printing. The manufacturer reserves the right, at any time, to make changes in product design or material or component specifications as its sole option, without notice. This includes the substitution of components of a different brand or trade name which will result in comparable performance. All information printed in this brochure is subject to change after the date of printing. Some features shown or mentioned in this brochure are optional and may only be available in selected floorplans. Photographs may show props or decorations that are not standard equipment on Holiday Rambler models. Holiday Rambler, the Holiday Rambler logo and its design, are registered trademarks. All other products and company names are trademarks and/or registered trademarks of their respective holders. While the color of the motorhome's exterior and the interior fabrics depicted in this sales brochure are fair and reasonable depictions, the colors depicted may not be an exact match of the actual colors because of the variances in photo-processing and variances caused by inserting the photographs within the sales brochure. Due to product improvements, changes during the model year and/or transcription errors that may occur, information represented within this brochure may not be accurate at the time of your purchase. If certain information is significant to your purchasing decision, please confirm the information with your dealer prior to submitting your order. Component part and appliance manufacturers issue limited warranties covering those portions of the recreational vehicle not covered by the Limited Warranties issued by Monaco Coach Corporation. To learn which specific component parts and appliances are excluded from the Limited Warranties issued by Monaco Coach Corporation, please contact your selling dealership or Monaco Coach Corporation directly, or review the warranty packet inside the recreational vehicle.



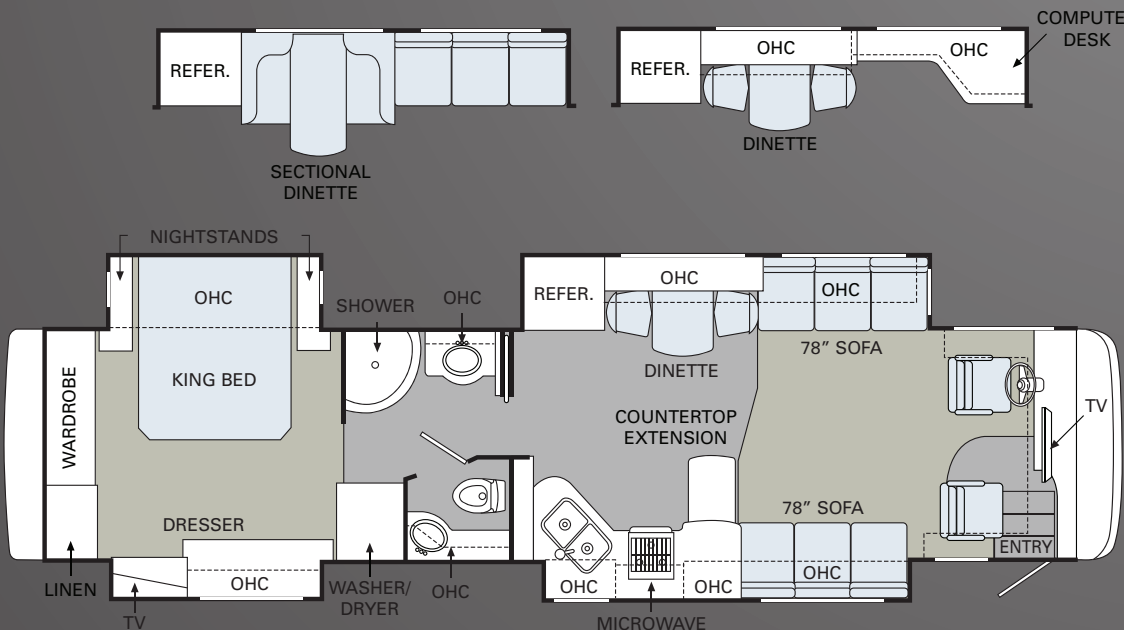
38PDQ



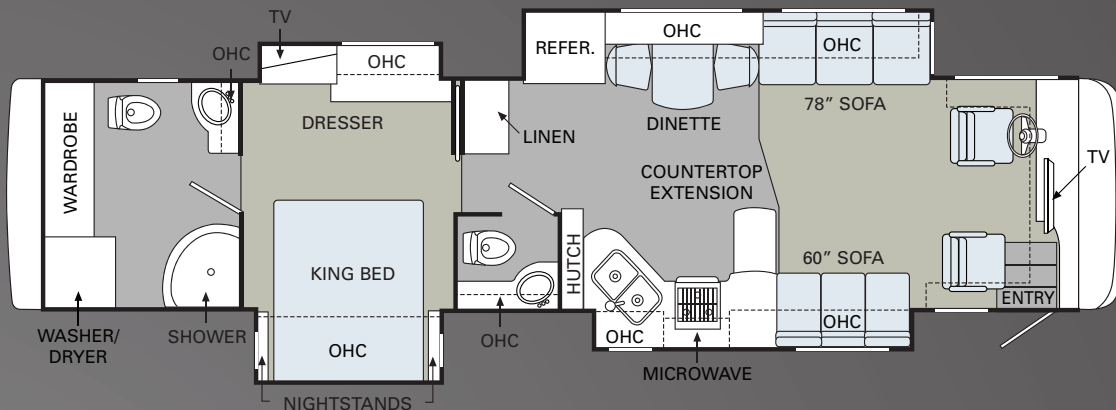
40QDP



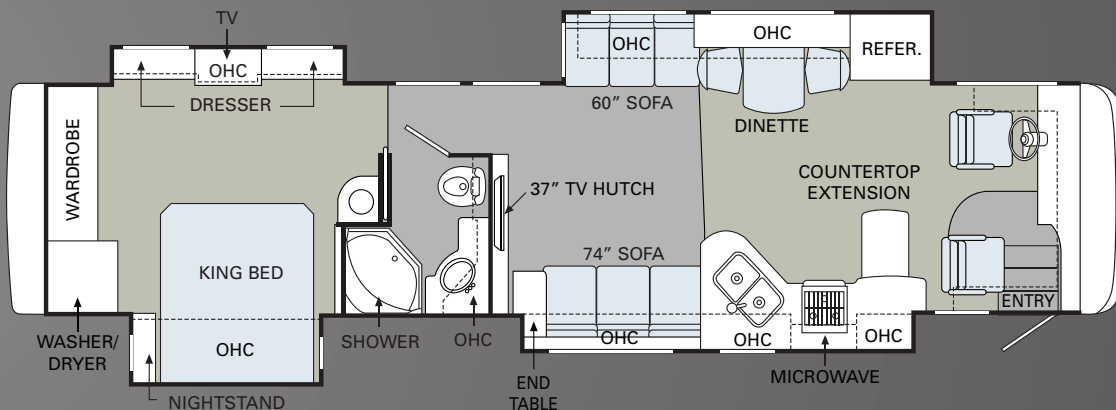
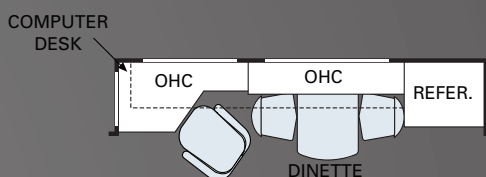
42PDQ



CARPET | TILE



42DSQ



42KFQ

H O L I D A Y R A M B L E R . C O M

Log on to our website anytime, night or day. It's your link to everything Holiday Rambler, including product news and updates, club events, dealer and service center info and much more. Take it for a test drive today.



WE'RE HERE. ANYTIME, EVERY TIME.

- Reach us anytime — literally — via our live customer support line.
- Drive in to one of our 350 Service Centers.
- Enjoy the first year free when you enroll in our Owner Advantage Roadside Assistance Program.
- See where it all begins with a tour of one of our facilities in Indiana or Oregon. Call 1-800-650-7337 or 1-800-634-0855 to find out more.





HOLIDAY RAMBLER®

This is Living®

BEING DIFFERENT MAKES
ALL THE DIFFERENCE.

Take a closer look, and you'll discover that Holiday Rambler, a brand of Monaco Coach Corporation, gives you more industry "bests" than any other RV manufacturer. Like the incomparable ride and handling of the Roadmaster Chassis. The convenience of our 350 service centers. The peace of mind of 24/7 roadside assistance. The value of Monaco Financial Services. And the online support of holidayrambler.com. At Holiday Rambler, we've built our reputation by listening to you — and answering to you. And that's the difference that's made us the best.

WARRANTIES

12 MONTH/24,000 MILE basic limited warranty

5 YEAR/50,000 MILE limited warranty on aluminum or steel frame structure of sidewall, roof, front and rear cap

3 YEAR/50,000 MILE limited warranty on Roadmaster chassis

Applies to certain models. See owner's manual for complete details.

NAVIGATOR®



IMPERIAL™



SCEPTER®



ENDEAVOR®



AMBASSADOR®



NEPTUNE®



VACATIONER®



ADMIRAL®



ARISTA™



ATLANTIS®



AUGUSTA



TRAVELER®

