

09 SIGHTSEER



Crimson Charcoal Full-body Paint



Medium Parchment with
Bright Platinum Metallic



Medium Parchment with
Catalina Blue



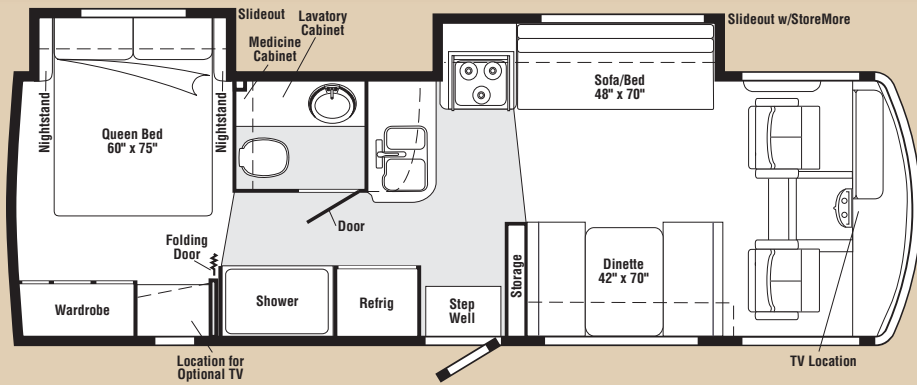
Teakwood
Full-body Paint



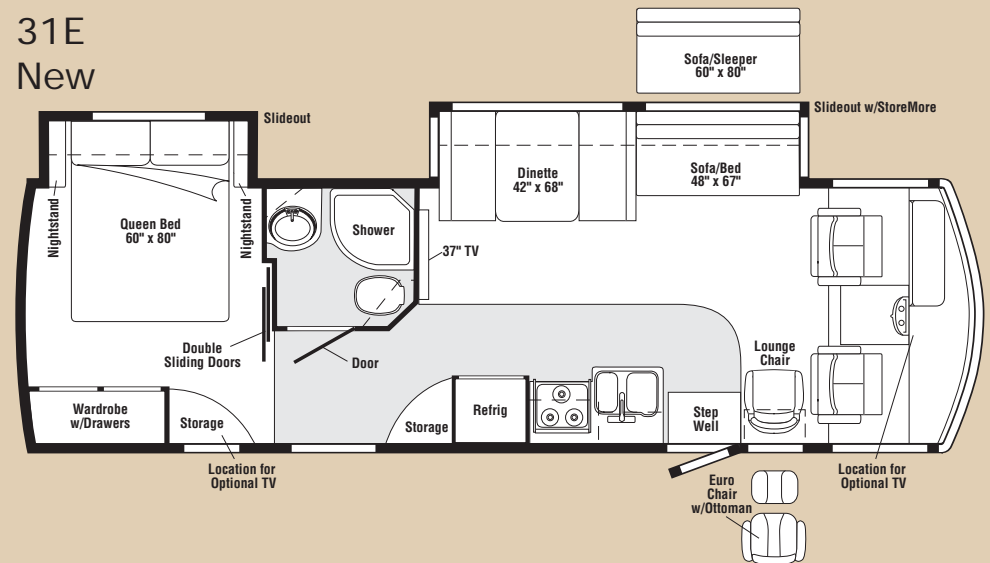
Golden Stone
Full-body Paint

09 SIGHTSEER

29R

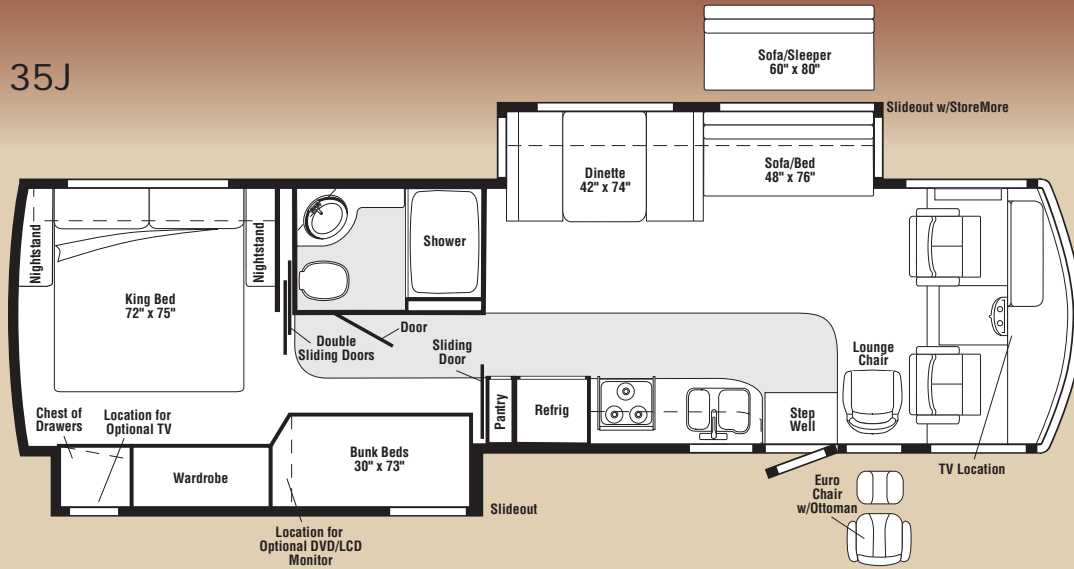


31E
New

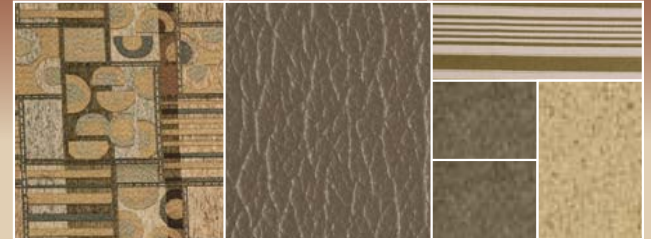


Interior Decor

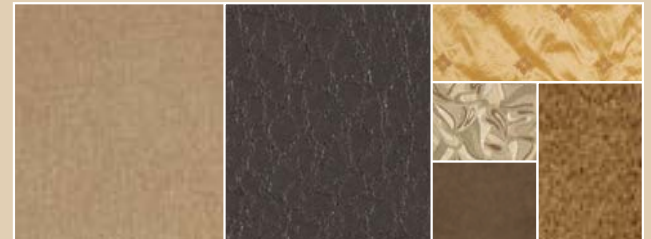
35J



MAIN	ULTRA-LEATHER	BEDSPREAD	
		ACCENT	CARPET
		ACCENT	



Aspen Leaf
w/available Pine Cone UltraLeather™



Sesame Seed
w/available Truffle UltraLeather



Hampton Blue
w/available Fields UltraLeather



Honey Cherry



Washed Maple

09 SIGHTSEER

Weights & Measures	29R	31E New	35J
Length	29'9"	32'4"	35'3"
Exterior Height	12'3"	12'3"	12'3"
Exterior Width	8'5"	8'5"	8'5"
Exterior Storage (cu. ft.)	77.5	92.9	101.8
Awning Length	16'	14'	14'
Interior Height	6'8"	6'8"	6'8"
Interior Width	8'	8'	8'
Freshwater Capacity w/Heater (gal.)	84	84	75
Holding Tank Capacity - Black/Gray (gal.)	37/41	38/44	44/48
LP Capacity (gal.)	18	18	18
Fuel Capacity (gal.)	75	75	75
GCWR (lbs.)	26,000 ^A /22,000 ^B	26,000 ^A /26,000 ^C	26,000 ^A /26,000 ^A /26,000 ^C
GVWR (lbs.)	18,000 ^A /18,000 ^B	22,000 ^{A*} /22,000 ^C	20,500 ^A /22,000 ^{A*} /22,000 ^C
GAWR - Front (lbs.)	7,000 ^A /7,000 ^B	7,500 ^A /7,500 ^C	7,500 ^A /7,500 ^A /7,500 ^C
GAWR - Rear (lbs.)	11,000 ^A /12,000 ^B	14,500 ^A /14,500 ^C	13,500 ^A /14,500 ^{A*} /14,500 ^C
Wheelbase	190"	208"	228"

A Ford F53 Chassis

B Workhorse W18 Chassis

C Workhorse W22 Chassis

* Running line change

Ford® F53 Chassis			
362-hp 6.8L Super Duty V10 SOHC Triton® engine			
TorqShift™ 5-speed automatic transmission			
Hydraulic brakes			
4-wheel ABS			
130-amp. alternator			
Trailer hitch: 5,000-lb. drawbar/500-lbs. maximum vertical tongue weight with 7-pin connector			
Stainless steel wheel liners			
29R	31E	35J	Optional Equipment
○	○	○	Automatic leveling jacks w/3-position controls
○	○	○	Workhorse™ W18 Chassis 340-hp 8.1L Vortec™ V8 engine 4L85-E 4-speed transmission Hydraulic brakes 4-wheel ABS 145-amp. alternator
○	○	○	Workhorse W22 Chassis 340-hp 8.1L Vortec V8 engine Allison® 6-speed transmission Hydraulic brakes 4-wheel ABS 145-amp. alternator