

**TORREY  
PINE**

2008 Fifth Wheel

**NEWMAR**

*Building Memories ...*



*That Last a Lifetime*



You know that old photo album you have? The one filled with pictures of your favorite moments throughout the years? The one that shows birthdays, graduations, weddings, and that time the kids spent all day building that enormous sand castle? How long has it been since you have dusted it off and taken a look – or added to it? Well, let us help.

Now is your chance to hit the road. Take a look at the Torrey Pine – a fifth wheel built with quality and comfort unique to Newmar. Revel in the beauty of the intricate design details such as the leaded décor glass cabinet doors, detailed slideout fascias and crown molding. Cook up that secret family recipe in the well-appointed kitchen. Tell stories around the classy dinette. Or watch the sunset from beneath your patio awning.

The road is waiting.

It's time to grab the camera.

**Newmar. When you know the difference.**

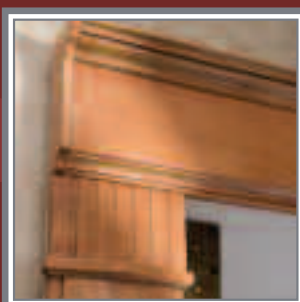






# *Moments to Remember*

35KSLR shown with Onyx décor and Ginger Maple hardwood cabinetry.



# Savor the Good Times

Put together a feast or a picnic spread in the Torrey Pine kitchen.

It's a space built to please and it's ready to help you fix all your favorites, from rosemary chicken to microwave popcorn.

To make any meal possible, Newmar built in the best amenities, including an optional Norcold® four-door refrigerator with cold water dispenser, 30-inch

convection microwave, and a three-burner recessed cooktop with glass oven door and electronic ignition. You have plenty of space to spread out with the deep Samsung Staron™ countertop with integrated solid surface sink. Standard extras such as the Corian® knife block and paper towel holder are within easy reach to make preparation a cinch.

From floor to ceiling and everywhere in between, the kitchen has plenty of room to house all of your much-needed ingredients. The extra-deep drawers give you ample storage and glide effortlessly on ball-bearing guides. The full-height pantry with fully adjustable slideout shelves provides easy access to all your provisions. The rich Ginger Maple hardwood cabinets are vented, allowing air movement to help keep all your food and stored items fresh for when it's time to whip up a delicious meal.







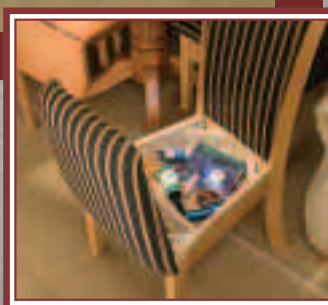




Share your favorite memories around the freestanding Super Slider dinette table that comfortably seats up to four adults. You'll spend hours chatting in the padded chairs with under-seat storage perfect for place mats, photo albums and travel essentials.

Whether talking over a cup of coffee or relishing a romantic dinner for two, achieve the perfect ambiance thanks to an overhead light, day/night pleated shades, lighted toe kicks and ceiling-mounted track lighting.

Spend time reflecting in the beautifully decorated Torrey Pine living space. The carefully chosen décor creates the perfect backdrop for reminiscing. Delight in the rich warmth of the hardwood crown molding, slideout fascias and wall-mounted reading lights. Relax in the glider recliner chairs, while talking with friends or enjoying the flat screen television. Easily convert the hide-a-bed sofa to accommodate overnight guests – whether old friends or grandkids.

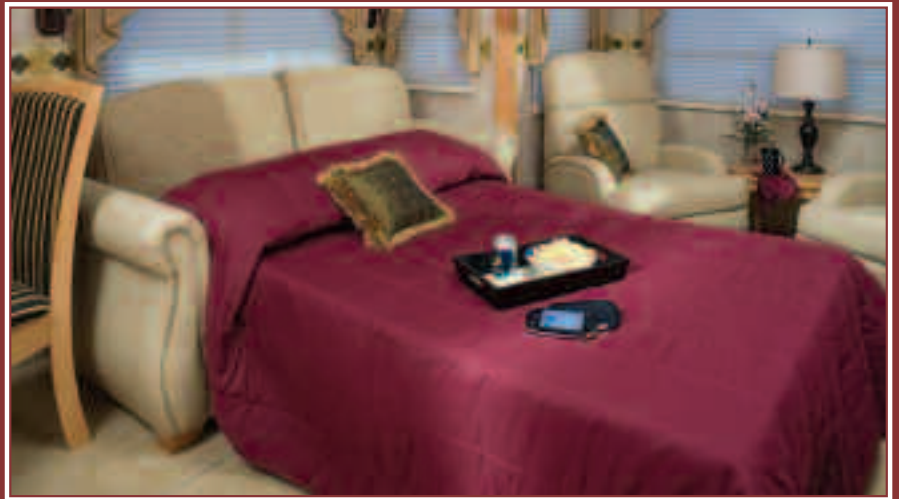






# *Make Some Memories*

Newmar designed Torrey Pine to keep you in complete comfort. You'll appreciate the thoughtfully grouped interior/exterior light switches and thermostat. Stay cool on those warm, sunny days with the ceiling fan and specially-engineered, dual-ducted Total Comfort™ central air conditioning system. For those cooler times, warm yourself with the 42,000-Btu furnace with in-floor ducted heat and optional fireplace.



Whether daydreaming or settling in for the night, the Torrey Pine bedroom suite welcomes you. Sink into the King Koil™ queen-size bed with its luxurious suede quilted bedspread and matching shams, accent pillows and headboard. The warm Ginger Maple cabinetry, hardwood slideout fascias and leaded glass doors provide an ambiance unique to a Newmar fifth wheel. You'll find plenty of storage tucked inside the cedar-lined closet and under the bed. Convenient lifts allow for easy access to that under-bed storage space.

The bathroom area is a dream in itself with radius vanity top and cabinet front, Samsung Staron™ countertop with integrated solid surface sink and oil-rubbed bronze fixtures. The large shower features a built-in seat, privacy rain glass, and its own light and skylight. Plus Torrey Pine includes a standard monogrammed linen package complete with sheets, pillowcases, towels and washcloths.

Take some time to unwind in the bedroom suite. Sit back and enjoy the 20-inch LCD television or listen to music from the living area's entertainment center through two bedroom speakers with on-off isolation switches. Even more extras come standard with the convenience package that includes a floor safe, hair dryer and cordless vacuum.







Take Time for Your  
*Beauty Rest*



# Beauty is...

The Newmar logo is a dark, rectangular badge with a metallic, brushed finish. The word "NEWMAR" is written in a white, serif, all-caps font across the center of the badge. The badge is mounted on a light-colored, curved surface, likely the front of a motorhome, and is illuminated from below, creating a soft glow.

While you'll notice the Newmar beauty in the sleek exterior graphics, rich fabric choices and cedar-lined wardrobe, most of the beauty you'll experience isn't often seen. Actually, it's in places you may never see. It's tucked inside the hardwood cabinets, behind the crown molding and beneath the padded carpeting. From the aerodynamic front-end cap to the LED tail lights, the Newmar difference is encased in every aspect of the unit as shown in the Extra Mile Differences on the next few pages. In the end, these unique Newmar features will not only give you that wonderful experience you're looking for, they will give you peace of mind so all you have left to do is build memories that last a lifetime.





*...MORE  
than skin deep!*



# Torrey Pine Extra Mile

What makes Newmar different? Newmar understands the real world of RV travel and works diligently to design and build quality products that provide comfort and superior performance. Newmar designers do things a bit differently, taking more time and using more materials to get it right. As a vertically integrated manufacturer, Newmar builds much of the recreation vehicle themselves and relies less on sub-assembly suppliers. That means more control over design and quality. Newmar engineers better understand the unit as a whole and know how to create a solid, strong RV that offers innovation, convenience and durability. Going that extra mile to create a top-quality fifth-wheel results in a peace of mind unique to Newmar owners. **That's the Newmar difference.**



**Newmar Builds Walls and Roofs** residential-style, with studs located 16 inches on-center. Extra C-channel aluminum studs and extra welds may cost more, but they provide a superior wall structure. Stud construction allows for residential-style wiring and conveniently located switches. Walls and wall studs are then bonded with a technologically-advanced adhesive, Sikaflex®, that is durable and flexible to absorb and soften the effects of travel.

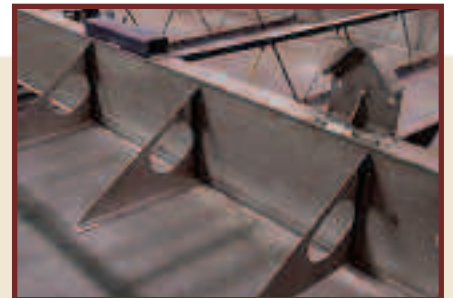


**Cantilevered Aluminum Roof Trusses** are fabricated by Newmar and placed 16 inches on-center to provide superior strength. Again, extra aluminum and extra welds provide extra durability.



**The Total Comfort® Dual In-Roof Ducting System** was engineered by cooling experts especially for Newmar. With multiple strategically placed vents, the system provides true central air conditioning for unparalleled cooling efficiency, balance and whisper-quiet operation.

**An Incomparable Superstructure, the Torrey Pine Chassis** is designed and built by Newmar with stronger steel, extra reinforcements and additional welds to make it exceptionally robust. The huge 12-inch steel I-beams provide superior Moment of Inertia (stiffness) and Section Modulus (bending stress) over smaller, thinner I-beams and stacked tube steel. Engineers take advantage of the entire height of the I-beam to attach full 12-inch steel outriggers for extended stability and strength. Many other outriggers are partial-height. Newmar believes that a home on wheels should start with a solid and stable foundation.



**Newmar-Made Skid Bars** are a lot different from the flimsy ones that are more commonly used. Constructed of thick bar steel and reinforced with even more steel, this is the super-duty, real-world version to help protect the RV underbelly from abruptly-angled roadway approaches. A Newmar exclusive.

**Another Newmar Innovation, the Slideout Cog Wheel,** was designed for a fuller engagement of the gears to prevent common gear slippage. The complete slideout system – from the superior strength foundation through the durable high-torque motor mechanism, to the independent operation and the unique self-storing travel-lock arms – is designed to provide years of convenient, smooth, dependable service.





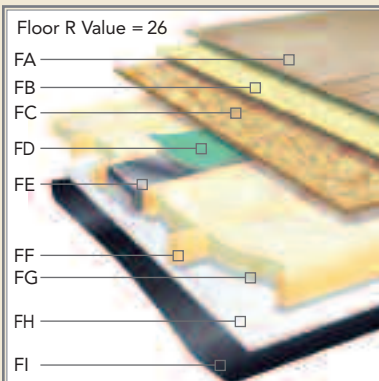
# Differences —

## Newmar Express Limited Warranty

As proof of our commitment to you, we at Newmar back every Torrey Pine fifth wheel with our industry-leading, one-year Newmar Express Limited Warranty. Ask your dealer for details.

Your Torrey Pine fifth wheel reflects Newmar's long history of product innovation and industry "firsts." You can depend on the exacting standards and meticulous care by which this fifth wheel is built. It's a showcase for Newmar value.

- A. Aerodynamic Gelcoated Fiberglass End Caps
- B. Gelcoated Exterior Sidewall
- C. Dark Tinted Safety Glass
- D. Dual Battery Box
- E. Molded Lower Sidewall Skirting and Gooseneck
- F. Power Front Jacks
- G. Pass-Through SuperStorage™
- H. 12" I-Beam Custom Built Frame
- I. Full-Height Frame Outriggers
- J. EZ Lube® Hubs
- K. MOR/ryde® LRE Suspension
- L. Radius Aluminum Roof Wraps
- M. 15,000 BTU Total Comfort™ Ducted Air Conditioning
- N. 16" O.C. Aluminum Sidewall Studding
- O. BriteTEK™ Roof
- P. Walkable Roof Decking
- Q. 16" O.C. Aluminum Roof Rafters
- R. Side Awning



Floor R Value = 26

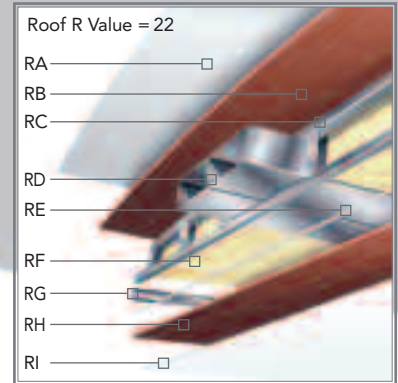
- FA —
- FB —
- FC —
- FD —
- FE —
- FF —
- FG —
- FH —
- FI —

- FA. Carpet/Vinyl Floor
- FB. Residential-Grade Carpet Padding
- FC. 5/8" Floor Decking
- FD. Foam Panel for Added Insulation and Noise Reduction
- FE. Aluminum Heat Ducting
- FF. 2" x 3" Wood Floor Joists
- FG. R-19 Fiberglass Batten Insulation
- FH. 5/8" Bead Foam Insulation
- FI. Aluminum Underbelly 4' x 8' Sheets

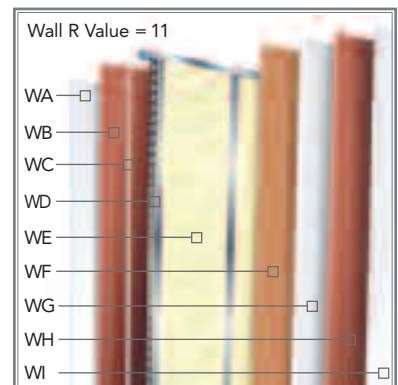
### The Limited Five-Year Structural Warranty

If any part of your Newmar recreational vehicle superstructure (which is the steel/aluminum structure of the sidewall, roof, or frame) fails to perform properly within five years, from the date of purchase, due to faulty workmanship or material supplied by Newmar, it will be repaired without charge for either parts or labor by Newmar. This structural warranty is available only to the original purchaser and is non-transferable.

# — the Beauty



- Roof R Value = 22
- RA. Strong, durable BriteTEK™ Roof
  - RB. Walkable Roof Decking
  - RC. Aluminum Rafter Framing
  - RD. Air Conditioning Ducting
  - RE. Sikaflex® Adhesive
  - RF. R-19 Fiberglass Batten Insulation
  - RG. Aluminum Stringer Framing
  - RH. 3/16" Plywood Ceiling Panel
  - RI. Padded Vinyl Overlay



- Wall R Value = 11
- WA. Gelcoated Exterior Sidewall
  - WB. 3/16" Plywood Exterior Wall
  - WC. Sikaflex® Adhesive
  - WD. Aluminum Framing with C-Channels
  - WE. R-7 Fiberglass Batten Insulation
  - WF. Kraft Paper Vapor Barrier
  - WG. 5/8" Bead Foam Insulation
  - WH. 3/16" Plywood Wall Panel
  - WI. Vinyl Overlay



# Within



Newmar's exclusive PolarPak R-19™ insulation in floor, ceiling, front and rear caps surrounds you with comfort and efficiency. It significantly increases your R-value and is standard on every Torrey Pine.

**Torrey Pine Floors** are extraordinarily heated, double insulated and constructed using 24-foot continuous run sheets of Weyerhaeuser sub-flooring.

Fewer seams reduce the infiltration of noise, moisture, and outside heat and cold. Most other RV floors are insufficiently heated in the extremities and pieced together with 4-foot sheets.



**Newmar Inspectors** review each and every coach at three major manufacturing points and at several targeted spots throughout construction. Not some time, not part-time; Newmar allocates full-time, dedicated, experienced positions to assure quality and maintain construction integrity.

**The Newmar-Originated Slideout**, with its 2x4 steel rails and massive reinforcement, is the strongest, most reliable and most durable on the market. A superior-strength platform results from welding hefty guide rail tubes to both mainframe rails and welding extra reinforcement into the system. Closed-channel frames keep small animals and outside debris from entering the coach.



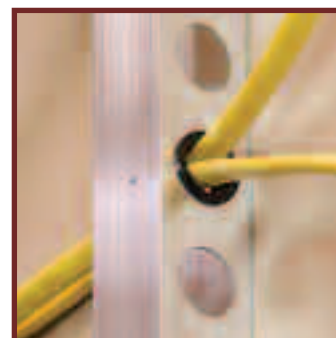
**Newmar Pioneered and has a Patent on the Flat-Floor Slideout.** But sliding a room in and out poses some out-of-the-way engineering and sealing challenges to do it right. Newmar developed an improved slideout wedge roof design that forms a tighter closure when the room is extended. A specially developed double-bulb, superior-memory seal provides protection from outside elements and insects, and sweeps off debris on room retraction.



**Hardwood Cabinets** are created by Newmar designers and constructed one at a time by skilled cabinetmakers. For increased stability, the frames are both glued and screwed. The finish is completed after assembly for a superior, unitized presentation.



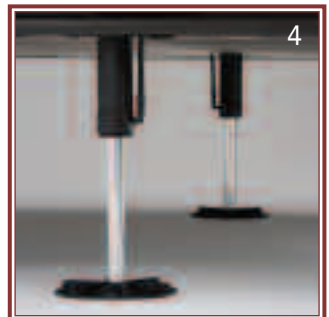
**Torrey Pine Solid Surface Countertops** are hand-sanded, custom-fitted and seamlessly integrated with backsplashes and in-line sinks to create a single surface with no cracks for easy clean up. They are non-porous, and heat and scratch resistant. Newmar craftsmen expertly fit, finish and install them.



**Grommets in Stud Holes** provide extra protection to wires for years of trouble-free use. Newmar uses a premium-grade, non-sag elastomeric wall adhesive, Sikaflex®, to completely bond the wall and studs.

# Built for Memories

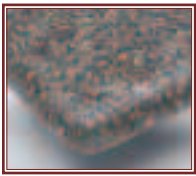
1. In-Line Water Filter helps ensure plenty of clean, clear water wherever you travel.
2. The Optional Rear Ladder on the Torrey Pine provides easy access to the strong BriteTEK™ covered walkable rooftop.
3. With just a touch of the optional Leveling Control Panel, effortlessly stabilize the coach to make any stay – no matter how long or short – a comfortable one.
4. The optional Hydraulic Jacks stabilize the coach easily, quickly and effectively.
5. The Clever Folding/Sliding Super Porch is another Newmar innovation and exclusive optional offering. It provides a wider platform – a porch – for more safety and stability entering and exiting the coach along with an oversized handrail.
6. Undermounted 17.5 Inch E-Rated Goodyear® Spare Tire is easy to access with lift kit.
7. Two Extra-Large 30 Lb. Propane Bottles with an automatic regulator are standard equipment. Super-large 40 lb. bottles are optional.
8. The Expansive Pass-Through SuperStorage™ area is heated and lighted. It boasts two handy cargo hooks and three-way access. Utility components are located in a separate, easily accessible compartment within the SuperStorage™ area.
9. MOR/ryde® Pin Box provides a smooth, comfortable towing experience. The optional pin box diminishes the transfer of forces from the fifth wheel to the truck, acting as a cushion to significantly and dramatically reduce the effect of chucking and road shock.





# Interior Color

## Options



Countertop (standard)



Hardware (standard)



Ginger Maple  
Hardwood  
(standard)



Simulated Plank



Ginger Maple  
Hardwood with  
Glazed Doors



Simulated Plank



Mesa Oak Hardwood



Simulated Plank



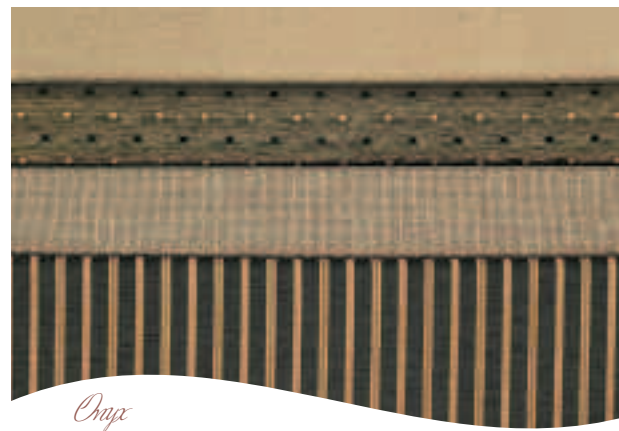
Vinyl Flooring (standard)



12" Marble Tile-Look Flooring



Simulated Ceramic Tile Flooring



Onyx



Portafino



Brocade Gold



Emerald



Onyx  
Painted Graphics



Portafino  
Painted Graphics

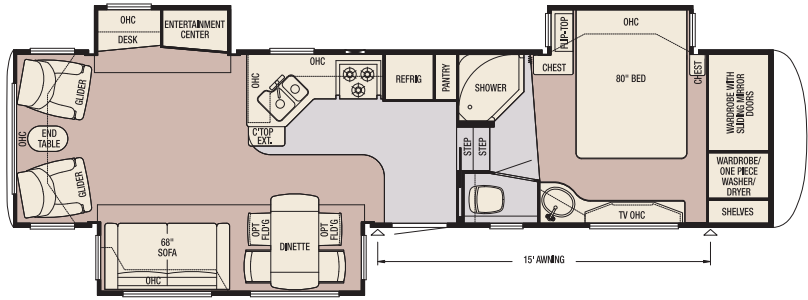


Emerald  
Painted Graphics

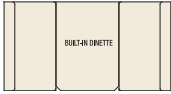
# Exteriors

# Floorplans

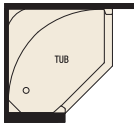
Model	TPFW 33SKRL
Tire Size	215/75R17.5-H
GAWR	8,000
GVWR	18,000
App. Length	36' 7"
App. Height	12' 11"
Width	97"
App. Dry Weight	13,320
App. Hitch Weight	2,520
Fresh Water (gal.)	75
Grey (gal.)	84
Sewage Cap. (gal.)	42
App. Hitch Height	47"
Heat Cap. (BTU)	42,000



## Floorplan Options



Built-In Dinette with (2) Drawers  
Option available on all models.

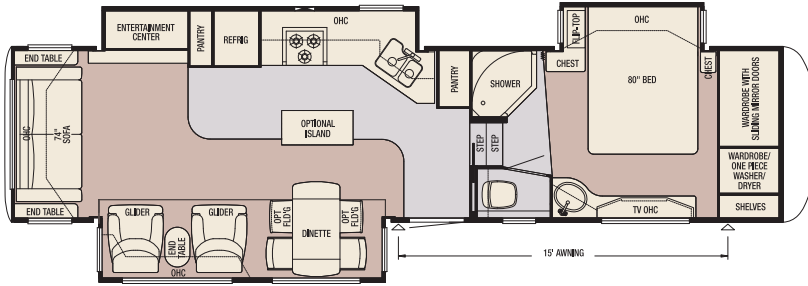


Fiberglass Tub with Glass Door  
Option available on all models.

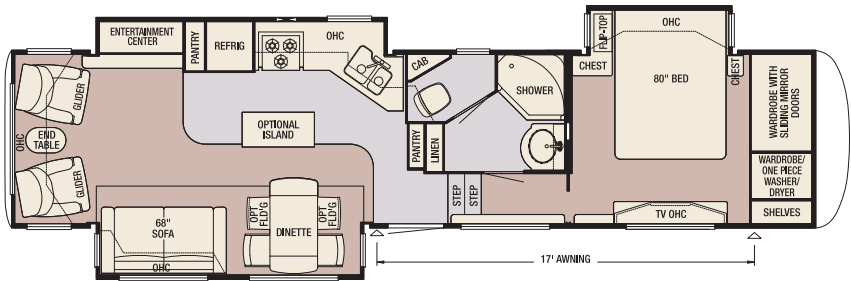


King Size Bed  
Option available on all models.

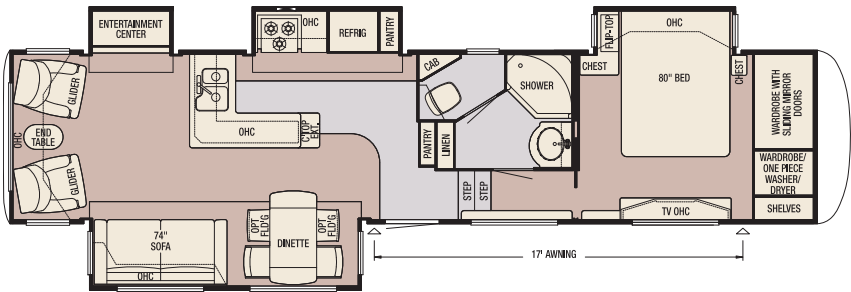
Model	TPFW 34RSKS
Tire Size	215/75R17.5-H
GAWR	8,000
GVWR	18,000
App. Length	37' 6"
App. Height	12' 11"
Width	97"
App. Dry Weight	13,905
App. Hitch Weight	2,640
Fresh Water (gal.)	75
Grey (gal.)	84
Sewage Cap. (gal.)	42
App. Hitch Height	47"
Heat Cap. (BTU)	42,000



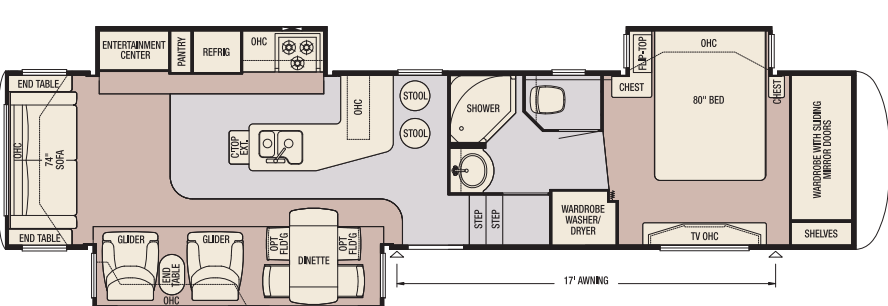
Model	TPFW 35KSLR
Tire Size	215/75R17.5-H
GAWR	8,000
GVWR	18,000
App. Length	38' 6"
App. Height	12' 11"
Width	97"
App. Dry Weight	14,450
App. Hitch Weight	3,185
Fresh Water (gal.)	75
Grey (gal.)	84
Sewage Cap. (gal.)	42
App. Hitch Height	47"
Heat Cap. (BTU)	42,000



Model	TPFW 36RLSA
Tire Size	215/75R17.5-H
GAWR	8,000
GVWR	18,000
App. Length	39' 7"
App. Height	12' 11"
Width	97"
App. Dry Weight	15,255
App. Hitch Weight	2,900
Fresh Water (gal.)	75
Grey (gal.)	84
Sewage Cap. (gal.)	42
App. Hitch Height	47"
Heat Cap. (BTU)	42,000



Model	TPFW 37LKS B
Tire Size	215/75R17.5-H
GAWR	8,000
GVWR	18,000
App. Length	40' 6"
App. Height	12' 11"
Width	97"
App. Dry Weight	15,000
App. Hitch Weight	3,000
Fresh Water (gal.)	75
Grey (gal.)	84
Sewage Cap. (gal.)	42
App. Hitch Height	47"
Heat Cap. (BTU)	42,000

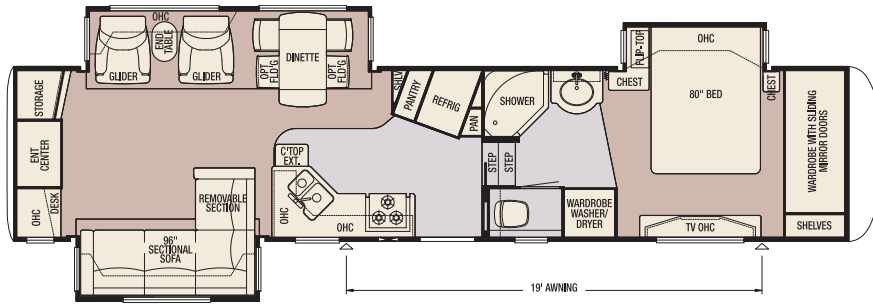


Vinyl Floor

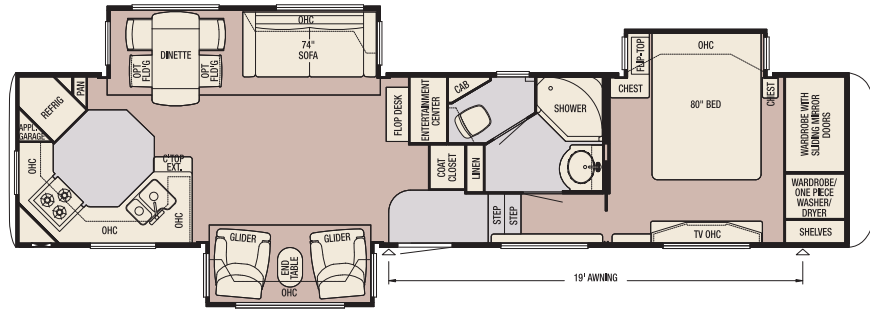
Carpet



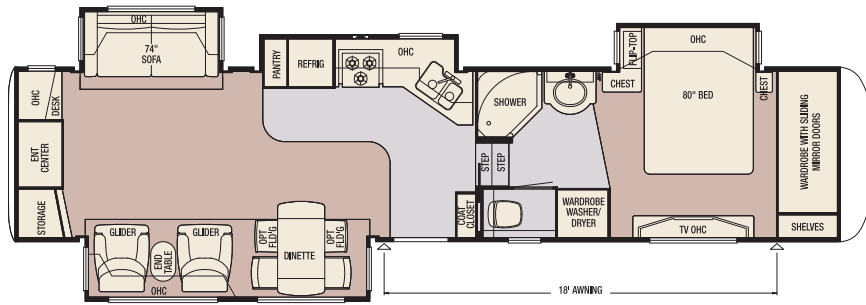
<b>Model</b>	<b>TPFW 37LSRE</b>
Tire Size	215/75R17.5-H
GAWR	8,000
GVWR	18,000
App. Length	40' 6"
App. Height	12' 11"
Width	97"
App. Dry Weight	15,010
App. Hitch Weight	2,870
Fresh Water (gal.)	75
Grey (gal.)	84
Sewage Cap. (gal.)	42
App. Hitch Height	47"
Heat Cap. (BTU)	42,000



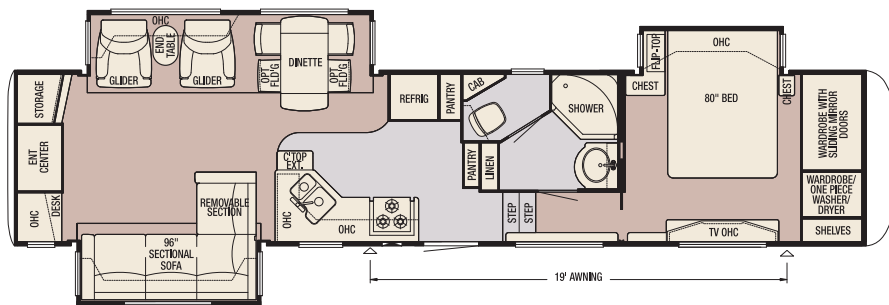
<b>Model</b>	<b>TPFW 37RKS</b>
Tire Size	215/75R17.5-H
GAWR	8,000
GVWR	18,000
App. Length	40' 7"
App. Height	12' 11"
Width	97"
App. Dry Weight	15,235
App. Hitch Weight	2,895
Fresh Water (gal.)	75
Grey (gal.)	84
Sewage Cap. (gal.)	42
App. Hitch Height	47"
Heat Cap. (BTU)	42,000



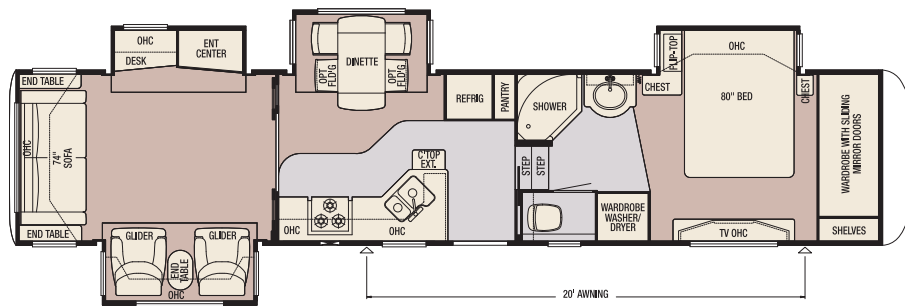
<b>Model</b>	<b>TPFW 37SKRE</b>
Tire Size	215/75R17.5-H
GAWR	8,000
GVWR	18,000
App. Length	40' 2"
App. Height	12' 11"
Width	97"
App. Dry Weight	15,130
App. Hitch Weight	2,725
Fresh Water (gal.)	75
Grey (gal.)	84
Sewage Cap. (gal.)	42
App. Hitch Height	47"
Heat Cap. (BTU)	42,000



<b>Model</b>	<b>TPFW 38LSHS</b>
Tire Size	215/75R17.5-H
GAWR	8,000
GVWR	18,000
App. Length	41' 2"
App. Height	12' 11"
Width	97"
App. Dry Weight	15,270
App. Hitch Weight	2,900
Fresh Water (gal.)	75
Grey (gal.)	84
Sewage Cap. (gal.)	42
App. Hitch Height	47"
Heat Cap. (BTU)	42,000



<b>Model</b>	<b>TPFW 39QSLR</b>
Tire Size	215/75R17.5-H
GAWR	8,000
GVWR	18,000
App. Length	41' 10"
App. Height	12' 11"
Width	97"
App. Dry Weight	15,450
App. Hitch Weight	2,785
Fresh Water (gal.)	75
Grey (gal.)	84
Sewage Cap. (gal.)	42
App. Hitch Height	47"
Heat Cap. (BTU)	42,000



## Optional Features

### Exterior

Portafino Painted Graphics  
Emerald Painted Graphics

### Air Conditioning and Heating

15M Penguin Central Air Conditioner  
15M Penguin Central Air Conditioner with Heat Pump  
Extra 13.5M Penguin Central Air Conditioner in Bedroom  
Wire and Brace for Second Air Conditioner  
Two 40 lb. Propane Bottles

### Appliances and Accessories

Icemaker Added to Refrigerator\*  
Norcold® 10 cu. ft. Refrigerator  
Norcold® 12 cu. ft. Four-Door Refrigerator  
Norcold® 12 cu. ft. Four-Door Refrigerator with Ice and Water Dispenser\*  
Three-Burner Recessed Cooktop with Drawers Below in Place of Oven  
Central Vacuum with Floor Port and Deluxe Tool Kit  
32" LCD TV in Living Room\*  
30" GE Profile Adventium™ Microwave Oven Electric Fireplace\*  
Roof-Mounted Satellite Prep  
Two-Piece Washer/Dryer  
One-Piece Washer/Dryer

### Cabinets and Furniture

Mesa Oak Hardwood Cabinetry  
Ginger Maple Glazed Hardwood Cabinetry  
Built-In Booth Dinette  
UltraLeather Sofa\*  
UltraLeather Glider/Recliner(s)\*  
UltraLeather Euro Recliner(s)\*  
Island Kitchen Base Cabinet\*  
King Bed with 72" x 80" King Koil™ Mattress\*  
Two Fixed Dinette Chairs with In-Seat Storage  
Two Folding Dinette Chairs with In-Seat Storage  
Folding Desk Chair\*  
Queen Anne Style Sofa Coffee Table

### Electrical Features

7.0 Cummins Onan® Generator with Auto Changeover and Gen Prep (Gen Prep - Includes Energy Command and Fuel Tank with Gauge)  
Generator Prep  
Solar Prep

### Exterior Features

Bike Rack Carrier  
Pullout Storage Tray in Pass-Through Storage  
Entry Porch with Collapsible Handrail at Main Entrance Door  
Rear Ladder

### Interior Features

12" Marble Tile-Look Floor in Kitchen, Bath, Foyer and on Steps  
Simulated Ceramic Tile in Kitchen, Bath, Foyer and on Steps  
Simulated Plank Floor in Kitchen and Foyer

### Plumbing and Bath Features

Exterior Shower  
Fiberglass Tub with Glass Door  
12V Heat Pads for Holding Tanks (N/A CSA Units)  
Theftford™ Aria Sculptured China Stool

### Windows, Awnings and Vents

Carefree® TravelR Awning  
Carefree® Summit Armored Slideout Cover Pkg.\*  
Carefree® Summit Armored Window Cover Pkg.\*  
Fan-Tastic® Vent with Rain Sensor in Kitchen and Bath Area  
Double-Pane, Tinted Safety-Glass Windows  
Clear Skylight in Bath, Kitchen and Living Areas

### Chassis Features

Three-Inch Non-Adjustable Lift Kit  
MOR/ryde® Rubber Pin Box  
Electric Over Hydraulic Disc Brakes  
Independent Power Front Jacks  
Rear 12V Power Twin Stabilizer Jacks  
Equalizer Hydraulic Jacks with 12V Battery

## Standard Features

### Air Conditioning and Heating

15M Brisk Air Central Air Conditioner  
Two 30 lb. Propane Bottles with Auto Regulator  
42,000 BTU Furnace with In-Floor Ducted Heat  
Propane Leak Detector

### Appliances and Accessories

10 Gal. Gas/Electric Water Heater with Direct-Spark Ignition  
30" Convection Microwave  
Recessed Three-Burner Cooktop with Electronic Ignition  
22" Oven with Glass Door and Electronic Ignition  
Entertainment Package:  
27" Flat Screen TV\* and Surround Sound System with Recessed Speakers, DVD, CD and AM/FM Stereo Tuner, Video Selector Switch and 20" LCD TV in Bedroom  
Norcold® 8 cu. ft. Refrigerator with Thermostat and LED Readout  
Flush-Mounted Solid Surface Bi-Fold Range Cover  
Cable TV Connection with RG-6 Coax  
Living Room Ceiling Fan  
Corian® Knife Block behind Range  
Hardwood Raised-Panel Refrigerator Front  
Magazine Rack in Water Closet  
Paper Towel Holder in Kitchen  
Phone Jack in Living Area  
Secondary Phone Jack for Internet Access at Dinette or Desk  
TV Antenna with Power Booster and Two Interior Jacks  
Prep for Ground Satellite Dish - Phone, TV Jack and Receptacle  
Two Bedroom Radio Speakers with On/Off Switch  
Washer/Dryer Prep  
Living Room Pullout TV Swivel/Slide Tray  
Fire Extinguisher, Smoke Detector and Carbon Monoxide Detector

### Cabinets and Furniture

Ginger Maple Hardwood Raised-Panel Cathedral Overhead Cabinet Doors  
Hide-A-Bed Sofa with Decorative Pillows\*  
Jack Knife Sofa\*  
Glider/Recliner Chairs\*  
Bar Stools\*  
Queen Anne Style End Table\*  
Residential-Style Ball Bearing Drawer Guides  
Freestanding Dinette Table  
Two Dinette Chairs with In-Seat Storage  
Staron™ Solid Surface Kitchen Countertop with Integrated Solid Surface Bowl  
Flush Solid Surface Kitchen Sink Covers  
Staron™ Solid Surface Bathroom Countertop with Integrated Solid Surface Bowl  
Cedar-Lined SuperStorage™ Bedroom Wardrobe with Two Full-Width Shoe Racks  
Lifts on Bed Top  
Kitchen Pantry with Adjustable Shelves\*  
Living Room Mirror  
Computer Desk\*  
Decorative Bedroom Dresser Toe Kick  
Queen Bed with King Koil™ 60" x 80" Mattress  
Nightstand/Storage Chest at Bed  
Bed Slide Overhead Cabinets  
Drawers at Bathroom Lavatory Base  
Hardwood Entry Door Trim  
Hardwood Decorative Front Wardrobe Header  
Kitchen Countertop Extension\*  
Hardwood Crown Molding in Living Room and Kitchen Ceiling

### Cabinets and Furniture

Ginger Maple Hardwood Raised-Panel Cathedral Overhead Cabinet Doors  
Hide-A-Bed Sofa with Decorative Pillows\*  
Jack Knife Sofa\*  
Glider/Recliner Chairs\*  
Bar Stools\*  
Queen Anne Style End Table\*  
Residential-Style Ball Bearing Drawer Guides  
Freestanding Dinette Table  
Two Dinette Chairs with In-Seat Storage  
Staron™ Solid Surface Kitchen Countertop with Integrated Solid Surface Bowl  
Flush Solid Surface Kitchen Sink Covers

Staron™ Solid Surface Bathroom Countertop with Integrated Solid Surface Bowl  
Cedar-Lined SuperStorage™ Bedroom Wardrobe with Two Full-Width Shoe Racks  
Lifts on Bed Top

Kitchen Pantry with Adjustable Shelves\*  
Living Room Mirror  
Computer Desk\*

Decorative Bedroom Dresser Toe Kick  
Queen Bed with King Koil™ 60" x 80" Mattress  
Nightstand/Storage Chest at Bed  
Bed Slide Overhead Cabinets  
Drawers at Bathroom Lavatory Base  
Hardwood Entry Door Trim  
Hardwood Decorative Front Wardrobe Header  
Kitchen Countertop Extension\*  
Hardwood Crown Molding in Living Room and Kitchen Ceiling

Your Official Torrey Pine Dealer:

### Electrical Features

110V Exterior Receptacle  
12V Lighting Throughout  
Halogen Ceiling Lights Throughout  
Track Lighting in Kitchen  
50 Amp Electrical Service with Detachable Cord  
55 Amp Converter  
Convenience Lights at Main Entry Door, Entry Door Step, Sewer Hook-Up, Hitch and Water Works Compartment  
Decorative Light over Dinette  
Dual Battery Box Compartment  
Three Exterior Security Lights  
Fluorescent Light over Kitchen Sinks  
Decorative Tube Light at Kitchen Toe Kick  
Lighted Exterior Storage Compartments  
Wall Reading Lights in Living Area Slideouts  
Additional Water Pump Switch in Water Works Compartment  
Cable Jack and 110/12V Outlet in Door Side Pass-Through Storage Compartment  
Battery Disconnect Switch  
Command Center above Entry Door  
Manually Operated Hold-to-Run Slideout Switch

### Exterior Features

Painted Graphics  
30" Gelcoated Radius Entry Door  
BriteTEK™ Roof with Walkable Decking and Radius Aluminum Roof Wrap  
Two Cargo Hooks in Exterior Storage Area  
Cargo Net in Exterior Storage Area  
Extendable Grab Handle at Entrance Door  
Gelcoated Exterior Sidewalls and Baggage Doors  
Gelcoated Fiberglass End Caps  
Molded Gooseneck and Pass-Through Storage Door Wraps  
Molded Fender Wells  
Rear Skid Bars Prepped for Bike Rack Attachment  
Main Entrance Door with Triple Step  
Heated Pass-Through SuperStorage™ Basement Compartment  
Dedicated Compartment in Basement for Utilities  
Door Struts in Pass-Through SuperStorage™

### Interior Features

Padded Vinyl Ceiling  
Sculpted Carpet with High Density Padding in Living Room and Bedroom  
Vinyl Floor in Kitchen, Foyer and Bath  
Convenience Package:  
Floor Safe, Hair Dryer and Cordless Vac  
Day/Night Pleated Window Shades with Jabots in Living Room and Bedroom  
Vertical Blinds on Rear Bay Window  
Decorative Wall Border  
Interior Assist Handle at Main Entry Door  
Kitchen Wastebasket  
Lazy Susan in Kitchen Overhead Cabinet  
Suede Quilted Bedspread with Shams, Accent Pillows and Bed Skirt  
Monogrammed Linen Package:  
Two Bath Towels, Hand Towels, Wash Cloths and Pillow Cases, and One Sheet Set  
Quilted Fabric Headboard with Bedpost Accents  
Laminate Woodgrain Steps with Hardwood Bullnose Trim  
Leaded Glass Door Accents in Living Room and Bedroom  
Decorative Hardwood Arched Pocket Door Headers  
Hardwood Raised Six-Panel Interior Passage Doors  
Decorative Hardwood Slide Fascias

**TORREY** 2008  
**PINE** Fifth Wheel

### Plumbing and Bath Features

Demand Water System with SHURflo® Pump  
Oil-Rubbed Bronze Hardware and Fixtures  
Bath Accessories:  
Toilet Paper Holder, Towel Ring and Two Robe Hooks  
One-Piece Fiberglass Shower with Molded Seat and Glass Enclosure  
Adjustable-Height Shower Head  
High-Rise Kitchen Faucet with Separate Pullout Sprayer  
Medicine Cabinet with Deluxe Lighting  
Monitor Panel  
Sewage Holding Tank Rinse  
Sewage Hose Storage Tray  
Lighted, Heated and Enclosed Exterior Water Works Compartment  
Theftford™ Aqua Magic II Toilet with Spray Attachment  
Shower Courtesy Light  
In-Line Water Filter for Entire Unit  
Water Heater Bypass  
15' Quick-Connect Hose and Sprayer in Pass-Through Storage

### Construction Features

12" I-Beam Custom-Built Frame  
5/8" Structurwood® Floor Decking  
5/8" Bead Foam Insulation Laminated in Sidewalls  
Aluminum Framed Sidewalls, Roof, Front and Rear on 16" Centers  
Fully Heated and Insulated Holding Tanks  
Enclosed Underbelly with 4'x8' Sheets of Aluminum Laminated to 5/8" Bead Foam  
PolarPak R-19™ Insulation in Roof, Floor, Front and Rear End Caps  
Extended Pin Box  
Composite R-Values:  
Roof: R-22 Floor: R-26 Sidewalls: R-11

### Windows, Awnings and Vents

Create-A-Breeze Vent with Auto Lift in Bathroom  
Carefree® Fiesta LTD Armored Side Awning  
Dark Tinted Safety-Glass Windows  
Skylight in Bathroom\*

### Chassis Features

Shock Absorbers  
Recessed 17.5" E-Rated Spare Tire with Lift Kit  
17.5" H-Rated Tires  
MOR/ryde® LRE Suspension  
EZ Lube® Axles  
Polished Aluminum Wheels  
Power Front Jacks  
Quick-Release H/D Pin for Front Jack Legs  
Rear Stabilizer Jacks

\* Check with Dealership on Floorplan Availability



**NEWMAR**

WHEN YOU KNOW THE DIFFERENCE™

**NEWMAR CORPORATION**  
355 N DELAWARE ST  
PO BOX 30  
NAPPANEE IN 46550-0030  
574-773-7791 Fax 574-773-2895  
[www.newmarcorp.com](http://www.newmarcorp.com)

Some features in our literature are optional. Colors and finishes are photographic representations. The actual materials may look different. Prices, specifications and floorplans are subject to change at Newmar's discretion, without prior notice or obligation. Please see your dealer for actual samples and specifications. ©2007 Newmar Corporation. Litho in USA. NEW21367 5/07-20M