

# SPRINTER

By Keystone

Travel Trailers and Fifth Wheels



Camping Made Easy



## Feels like home

relax, we make it easy. From premiere residential furniture, large entertainment centers, to elegant window treatments, it is easy to see why Sprinter is America's first choice.



# The *SPRINTER* Story

Introduced in 1996 as Keystone's first product line, Sprinter's goals remain simple; take the suggestions from our customers and make them the foundation for the Sprinter design. As result of these efforts, Sprinter offers customers it's proudest Distinction from other brands, a product designed to:

"Make Camping Easy"

Wouldn't it be nice to deploy your awning with the touch of a button? Sprinter's "One Touch Electric Awning" makes it easy!

How about a LP Quick Connect that makes getting gas to your grill easy? Yep! no more hauling charcoal or extra LP tanks just for the grill!

What if you had illuminated Light Switches in those hard to see places in the middle of the night?. We make it "easy" to find the light for the bathroom while everyone else is sleeping.

Take a look at the mattress, it's an Upgraded Pillow Top. After all, you are camping to relax and we want to make it "Easy" for you to get that good nights rest.

How do you dry your wet bathing suits and towels? Let us make it "Easy" with our Retractable Clothes Line in every tub and shower.

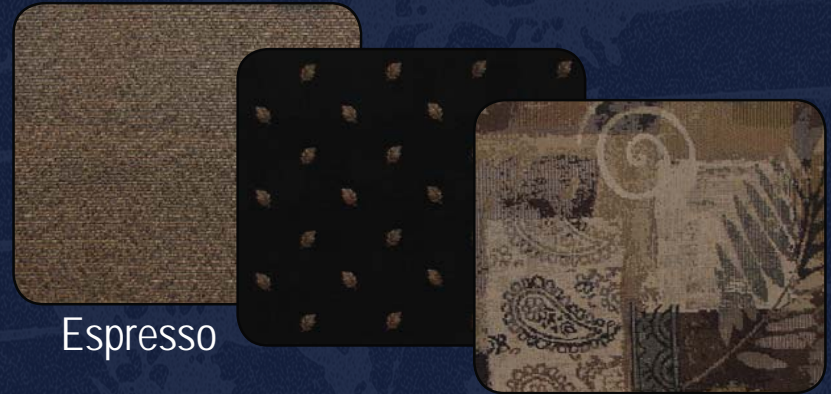
From a trash can in every kitchen, to an easy stowed Picnic Table Tucked away in every unit. Sprinter "Makes Camping Easy"

We at Sprinter understand that finding the time to relax is often hard to do. So for the times you do find to slow down and enjoy North America's beauty, we want you to be able to enjoy every minute of it.

Take a look at Sprinter today and let us show you how we can

Make Camping Easy!

## Decor Fabrics



Espresso



Cypress



Chestnut



There is never a shortage of storage with Sprinter. From the hidden trash can right by the door to the cleverly designed kitchen, we have maximized your storage by giving you a place for everything.

## Some of Sprinter's Standard Kitchen Features

- \* **Oversized pots and pan drawer**
- \* **Solid wood raised cathedral cabinets with lifetime warranty**
- \* **6 gallon gas/electric, direct spark, auto ignition water heater with winterization bypass.**
- \* **Double door refrigerator**
- \* **Central monitoring system for all tanks and battery**
- \* **Residential metal drawer guides**
- \* **Spice rack**
- \* **Counter top flip-up extension**



### Interior Features

- \* 13,500 BTU Ducted Air Conditioner with "Quick Cool"
- \* 30 Amp Electrical Distribution Panel
- \* 12 Volt, 55 Amp Converter
- \* 30,000 BTU Auto-Ignition Furnace with Thermostat
- \* Water heater bypass for easy winterization
- \* Residential cabinet hardware
- \* Large picture window at dinette
- \* 6' 3" interior slide room height (FW)
- \* 12 volt slide room lights for dry camping
- \* Home theater surroundsound® system
- \* In floor ducted heat
- \* Central monitoring system for all tanks and battery

### Living Room Features

- \* Cable TV hook-up with antenna and signal booster
- \* Satellite prep
- \* High grade carpeting with pad
- \* Mastercraft furniture
- \* Residential fabric-covered valances with lambrequin legs
- \* Angled overhead storage in the slide room
- \* Home theater DVD / CD / AM / FM / MP3
- \* Air bed sofa
- \* 20" LCD TV

### Exterior Features

- \* One touch electric awning
- \* Lockable, radius baggage doors
- \* Rear bumper storage
- \* Gas bottle cover
- \* Easy opening triple entry step
- \* E-Z Lube™ axles
- \* Exterior grab handle for entry assistance
- \* Tough guard painted skirt metal
- \* Patio light with switch
- \* Rain gutters and spouts
- \* Two 30 LBS LP bottles with automatic change-over
- \* Roto-cast seamless holding tanks
- \* "Keystone Original spacemaker 56 gallon fresh water system.
- \* 36' 30 Amp power cord
- \* Exterior water station
- \* Exterior BBQ hook-up
- \* Electric front jacks (FW)

### Bath Features

- \* Large vanity sink
- \* Porcelain foot flush toilet
- \* Residential medicine cabinet with mirror
- \* ABS one piece tub surround
- \* Skylight over tub
- \* Reinforced tub support
- \* Attic fan
- \* GFI receipts in the bathroom

### Kitchen Features

- \* 6 gallon gas and electric dsi auto ignition water heater
- \* 3 burner high output gas range with piezo easy light
- \* Deep 60/40 residential sink
- \* Metal drawer guides
- \* Spice Rack
- \* Countertop flip-up extension
- \* Metal high arched faucet
- \* Lighted range hood with exhaust fan
- \* Microwave with carousel
- \* 17" oven
- \* Reversible dinette seat cushions
- \* EZ slide storage tray
- \* Dometic double door refrigerator
- \* Overhead cabinets above the sink
- \* Oversized pots and pan drawer

### Bedroom Features

- \* Cable TV hook-up
- \* High grade carpeting with pad
- \* Under bed storage with gas struts
- \* Color matched bedspread
- \* Bedroom reading lights
- \* Pillow top mattress
- \* King bed (Bedroom slide models)

### "Customers First" Safety Package

- \* Tinted safety glass windows
- \* Dual hitch safety chains
- \* Manual override for the slide rooms
- \* Fire extinguisher
- \* Smoke detector
- \* Carbon monoxide detector
- \* Egress windows
- \* LP gas leak detector
- \* Break away safety brake
- \* 4 wheel electric brakes
- \* Hitch light
- \* Door side and off door side clearance lights
- \* Egress windows
- \* Scare light (FW)

### "Camping Made Easy" Package

- \* Laminated aluminum framed sidewalls
- \* Enclosed underbelly
- \* easy store picnic tables
- \* Exterior speakers
- \* E-Z Lube™ axles
- \* Overhead slide room cabinets
- \* Skylight in the shower
- \* Six gallon gas / electric DSI water heater
- \* Microwave
- \* Oven
- \* Easy find light switches
- \* 13.5 ducted air conditioner
- \* DVD home theater system with surroundsound®

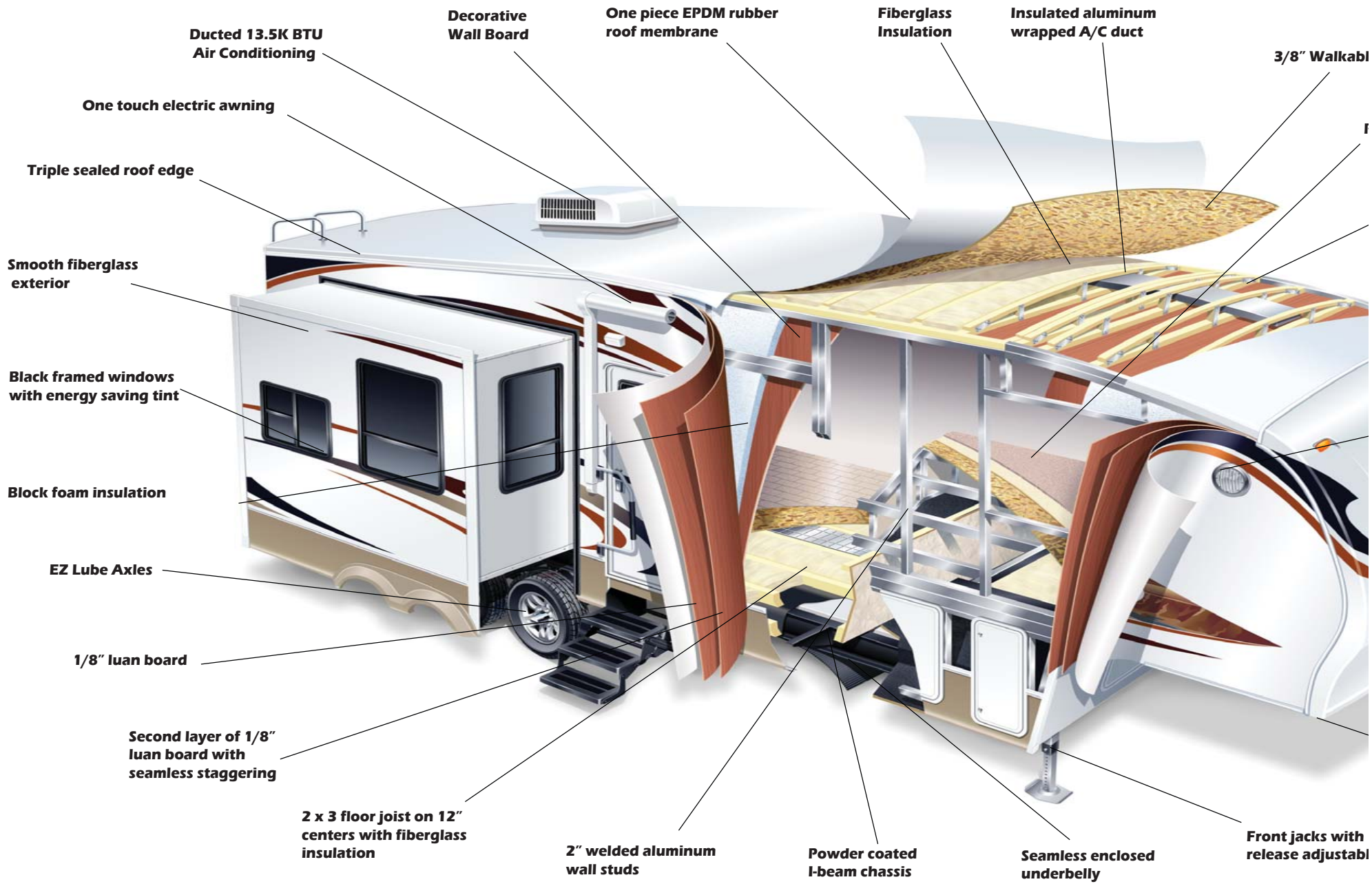
### Popular Options

- \* Stabilizer jacks
- \* Spare tire
- \* Residential refrigerator (371, 378)
- \* 10 gallon water heater (Some models)
- \* Upgraded 15,000 BTU air conditioner
- \* Free standing dinette with four chairs
- \* Extra large refrigerator (FW)
- \* Six panel refrigerator front
- \* Day/night shades (FW)
- \* Rear Ladder (FW)
- \* Extra large refrigerator (FW)
- \* Ceiling fan with light (High profile FW)
- \* Aluminum wheels
- \* Extra large refrigerator (FW)
- \* Wire and frame for a second A/C



The bunk-house is the ultimate kid hangout. After a long day of playing outdoors, kids will love relaxing with movies or games. When it's time to sleep, pull out the trundle bed for additional sleeping space.

# SPRINTER



# Superior Construction

Walkable roof decking

Residential textured carpet

5" Truss roof rafters on 16" centers

Fiberglass Front Cap

Security light

Docking Lights

Easy view hitch mirror

Extended hitch pin box

Special cap design to improve turning radius

with quick stable pins



Electric Awning

Never again do you have to have two people pulling out the awning. Just touch a button and you are ready to camp.



Outside Speakers

Enable you to listen to music and sports without the need of a second radio.



Easy Store Picnic Table

Having an extra picnic table is wonderful especially when you have an easy place to store it.



LP Quick Connect

Make grilling easy, no more extra LP tanks required

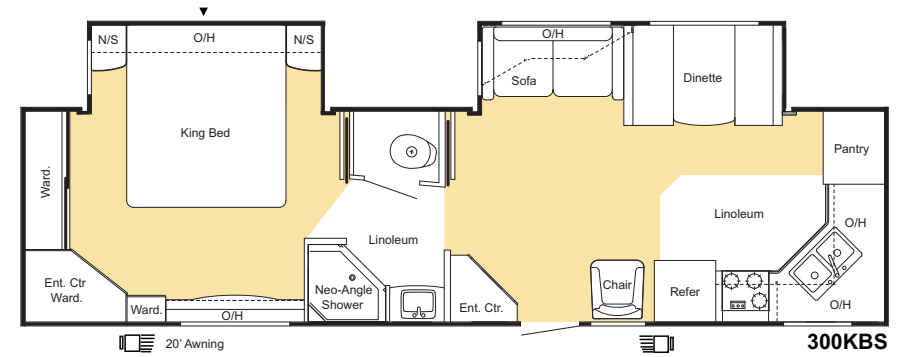
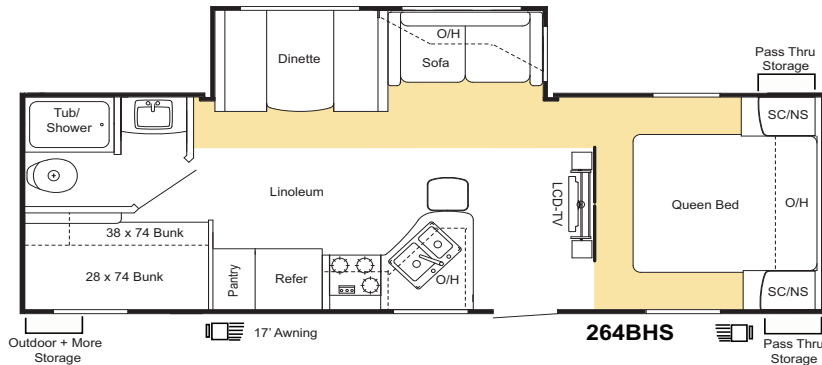
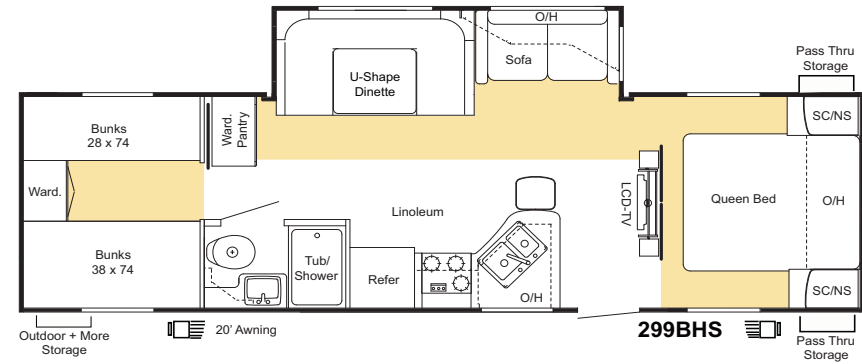
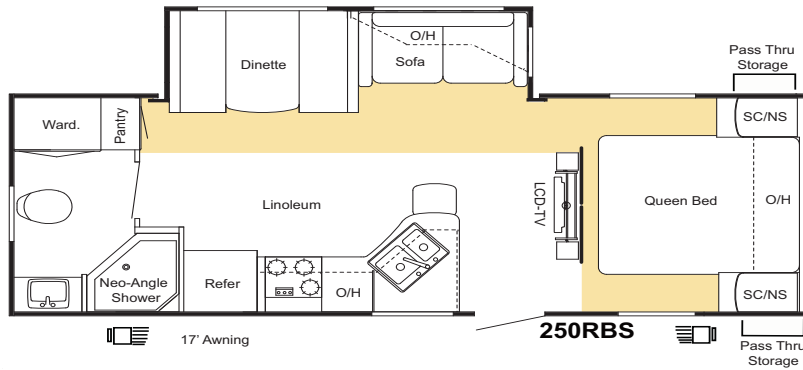
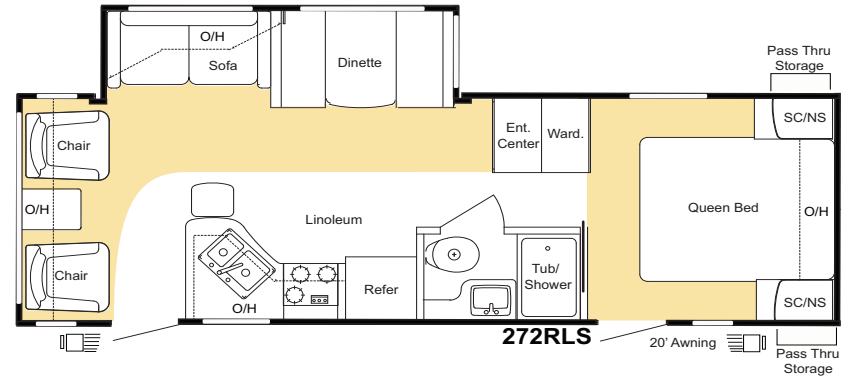
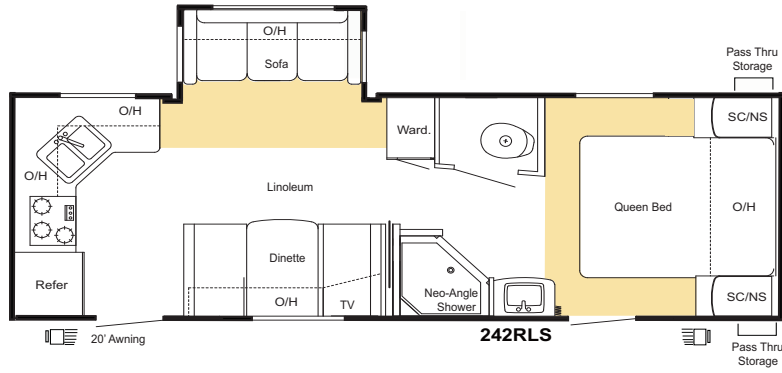


Easy Lube Axles

Simplify Lubrication

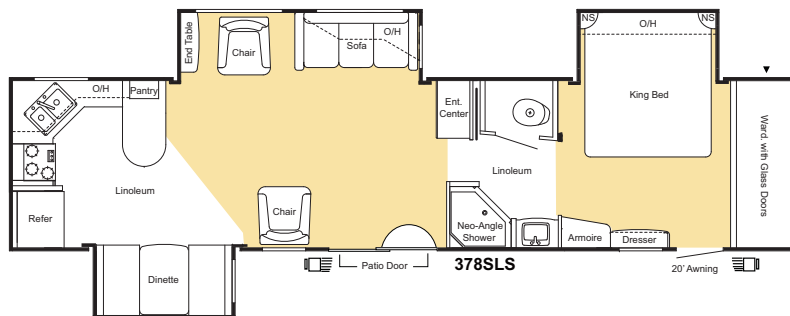
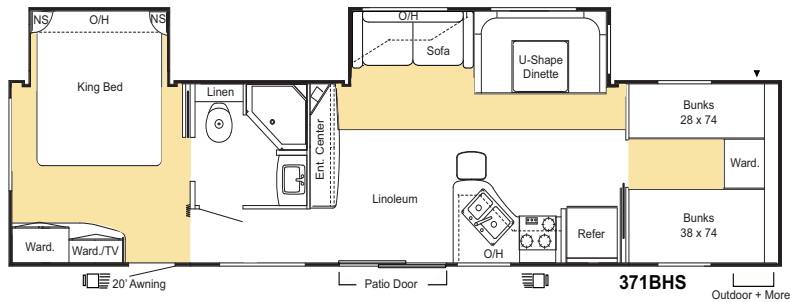
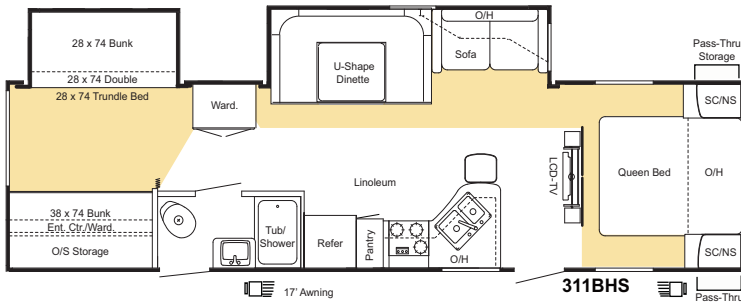
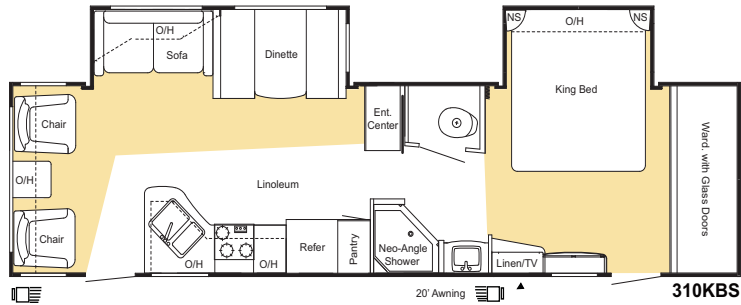


Sprinter's new cap design allows short bed trucks with extended cabs to turn an additional 30% without making contact with the front cap.





## Travel Trailer Specifications

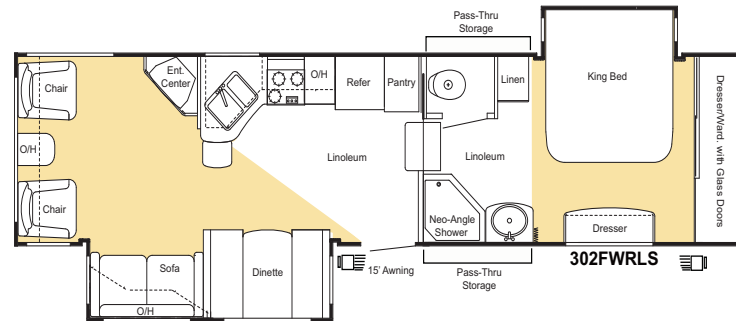
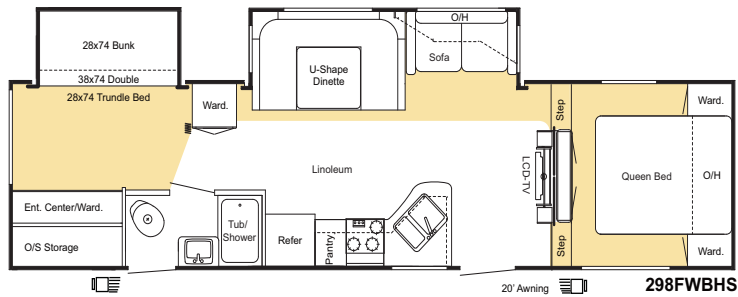
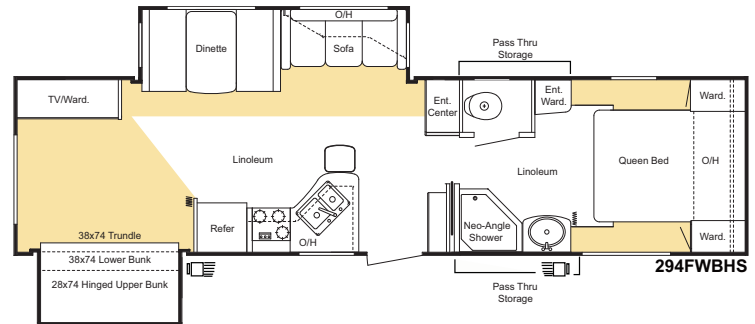
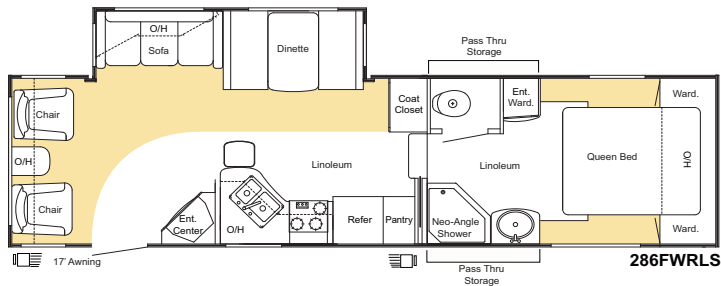
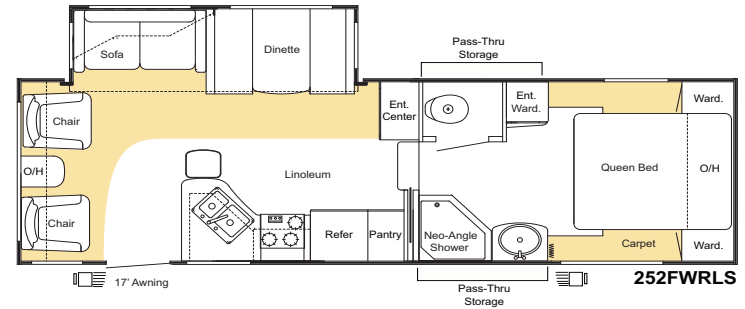
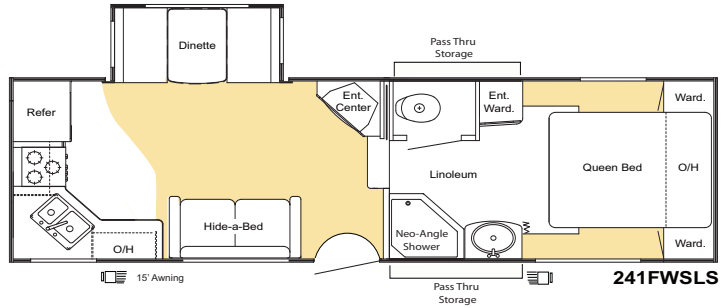


Travel Trailers	242RKS	250RBS	264BHS	272RLS	299BHS	300KBS
Shipping Weight	6135	6320	6625	6470	7095	7770
GVWR	9320	9435	9410	9390	9715	11,230
Carrying Capacity	3185	3115	2785	2920	2620	3460
Hitch	520	635	610	590	915	1070
Exterior Length	28' 2"	28' 11"	30' 6"	29' 8"	33' 2"	34' 5"
Exterior Width	8'	8'	8'	8'	8"	8'
Ext. Hgt. - A/C Top	10' 10"	10' 10"	10' 10"	10' 10"	11' 1"	11' 1"
Fresh Water	50	50	50	50	50	50
Waste Water	34	34	30	34	34	34
Grey Water	64	64	64	34	34	64
LPG Capacity	60	60	60	60	60	60
Tire Size	225/75D 15D	225/75D 15D	225/75D 15D	225/75D 15D	225/75D 15D	225/75D 15D
Number of Slides	1	1	1	1	1	2

Travel Trailers	301RMP	310KBS	311BHS	371BHS	378SLS
Shipping Weight	7525	8195	8025	8910	9120
GVWR	11,270	11,175	11,180	11,235	11,330
Carrying Capacity	3745	2980	3155	2325	2210
Hitch	1110	1015	1020	1075	1170
Exterior Length	34'	35' 3"	35' 4"	39' 8"	39' 11"
Exterior Width	8'	8'	8'	8'	8'
Ext. Hgt. - A/C Top	11' 1"	11' 1"	11' 1"	11' 4"	11' 4"
Fresh Water	50	50	50	50	50
Waste Water	30	34	34	34	34
Grey Water	34	64	68	64	64
LPG Capacity	60	60	60	60	60
Tire Size	225/75R 15D	225/75R 15D	225/75R 15D	225/75R 15D	225/75R 15D
Number of Slides	1	2	2	2	3

# Copper Canyon

# Fifth Wheels

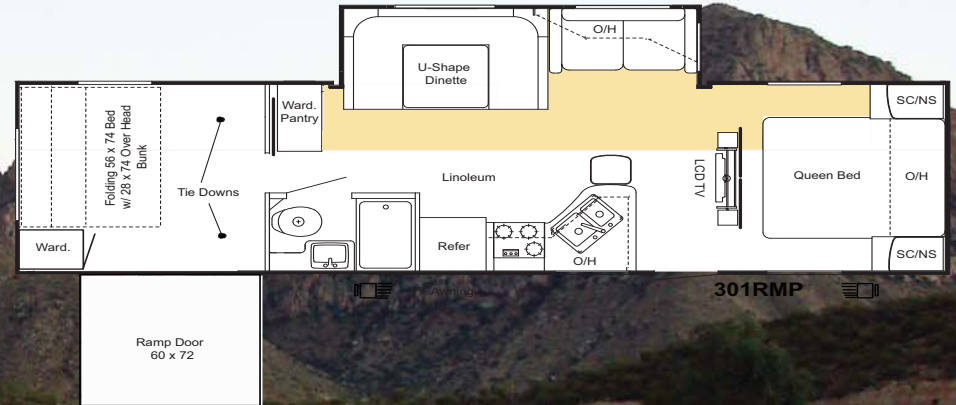




All New

# SPRINTER

Super Sport



SPRINTER

Copper Canyon

**Keystone RV Company**

2642 Hackberry Drive \* PO Box 2000\* Goshen, IN 46526  
574-535-2100\*[www.keystonerv-sprinter.com](http://www.keystonerv-sprinter.com)

Your Sprinter Dealer:



Product information is as accurate as possible as of the date of publication of this brochure. Features, floor Plans and specifications are subject to change without notice. Please also consult Keystone's website at [keystonerv.com](http://keystonerv.com) for more current product information. Tow Vehicle Disclaimer Caution: Owners of Keystone Recreational Vehicles are solely responsible for the selection and proper use of tow vehicles. All customers should consult with a motor vehicle manufacturer or their dealer concerning the purchase or proper use of suitable tow vehicles for Keystone products. Keystone disclaims any liability or damages suffered as result of the selection, operation, or misuse of a tow vehicle. KEYSTONE'S LIMITED WARRANTY DOES NOT COVER DAMAGES TO THE RECREATIONAL VEHICLE OR THE TOW VEHICLE AS RESULT OF THE SELECTION, OPERATION, USE OR MISUSE OF THE TOW VEHICLE. November 2008.