

# Montana



## 2008

### Floor Plans Specifications Optional and Standard Features

#### Fifth Wheel Specifications

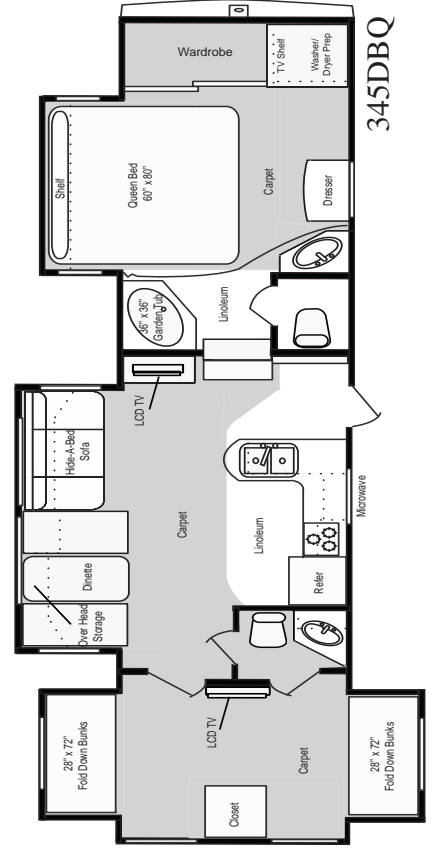
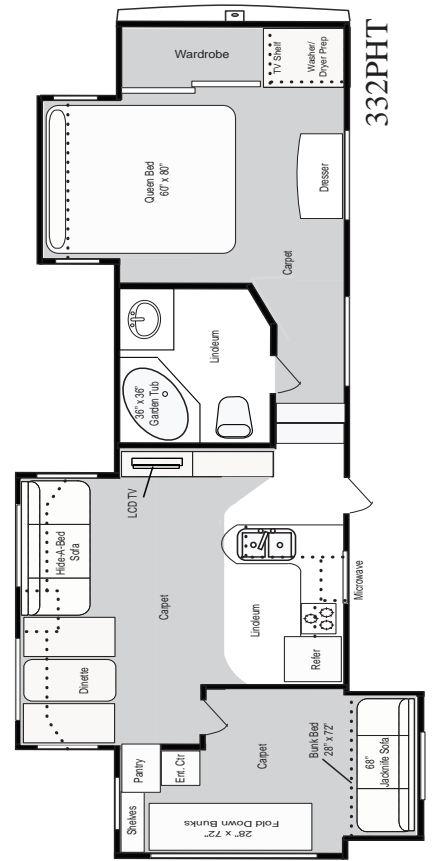
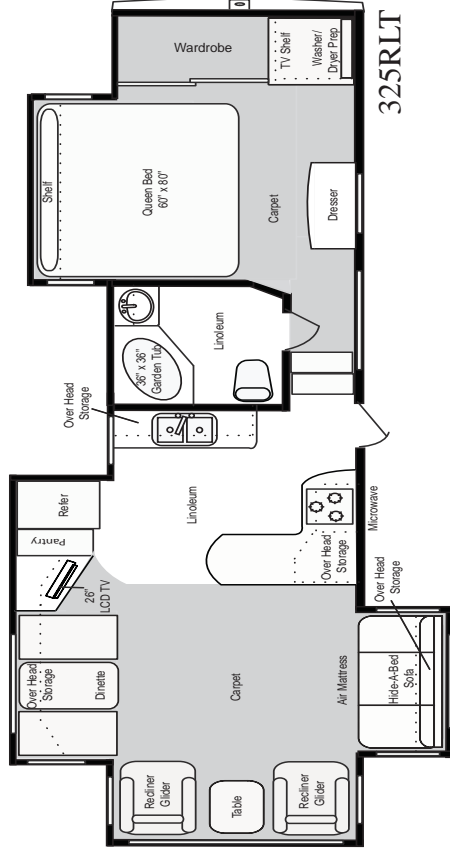
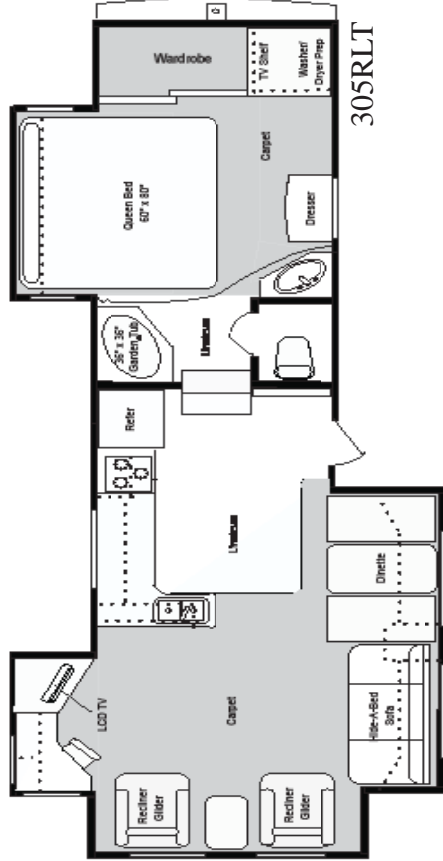
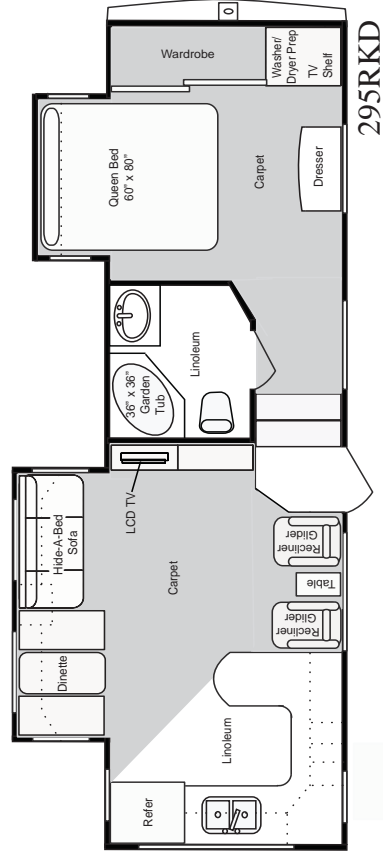
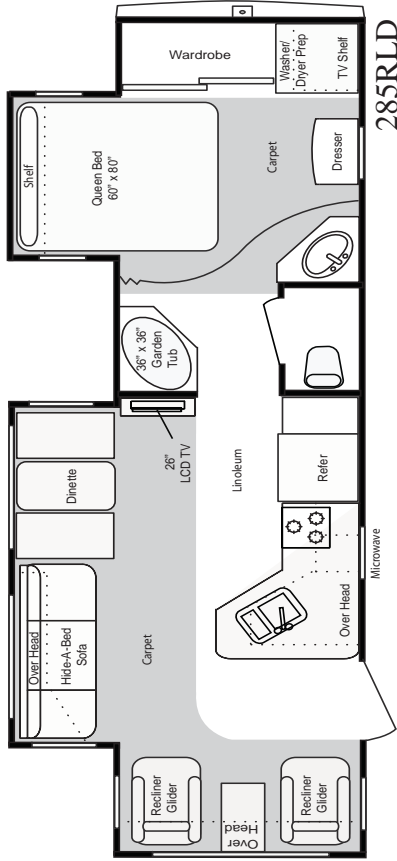
ITEM	285RLD	295RKD	305RLT	325RLT	332PHT	345DBQ
Shipping Weight	8990	9355	7565	10145	10575	11045
Carrying Capacity	4010	4270	4210	3995	3600	3265
Hitch	2060	2230	2105	2140	2175	2310
Exterior Length	31' 3"	32' 10"	34'	34' 11"	36' 2"	36' 2"
Exterior Width	8'	8'	8'	8'	8'	8'
Ext Height - Top of A/C	12' 9"	12' 9"	12' 9"	13' 2"	13' 2"	12' 9"
Fresh Water Capacity	67	67	67	67	67	67
Waste Water Capacity	38	32	38	38	38	76
Grey Water Capacity	76	76	76	76	76	76
LPG Capacity (lb.)	60	60	60	60	60	60
Tire Size	235/80R16E	235/80R16E	235/80R16E	235/80R16E	235/80R16E	235/80R16E
Awning Length	18'	18'	14'	14'	18'	18' 6"

#### Travel Trailer Specifications

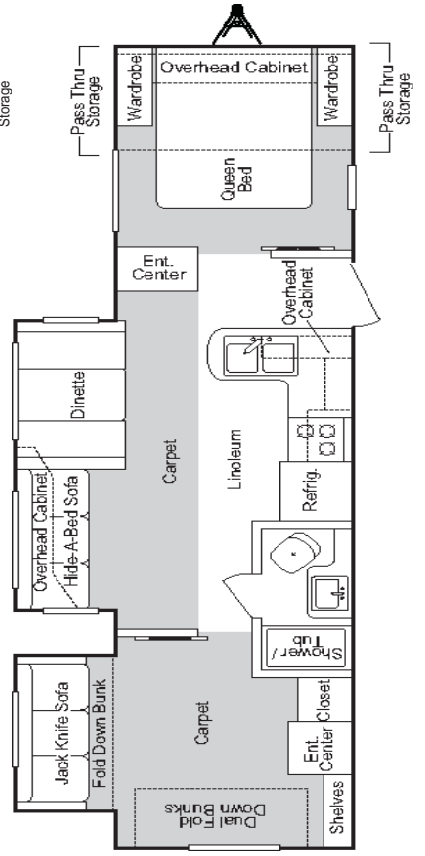
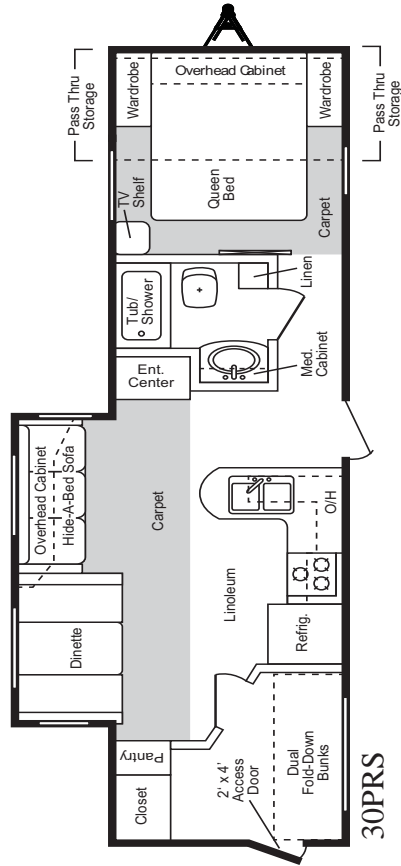
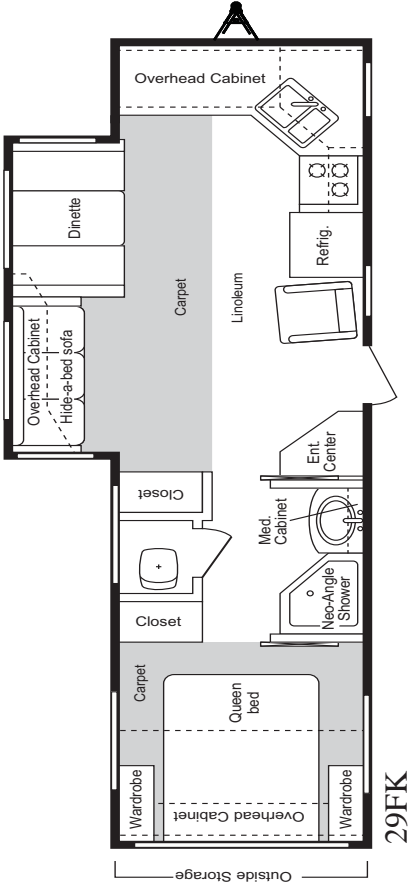
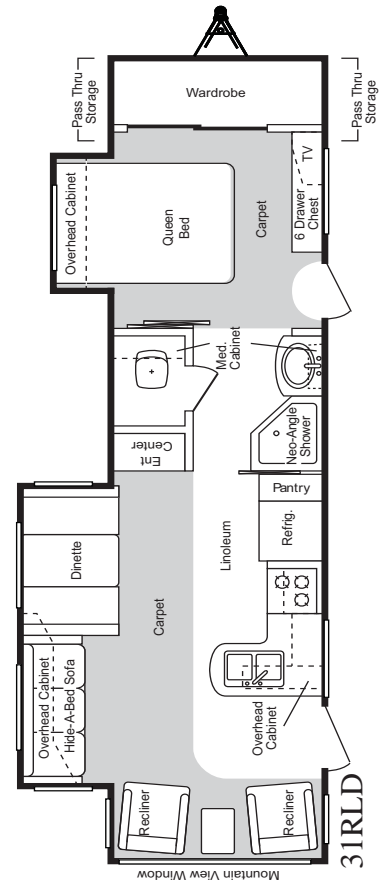
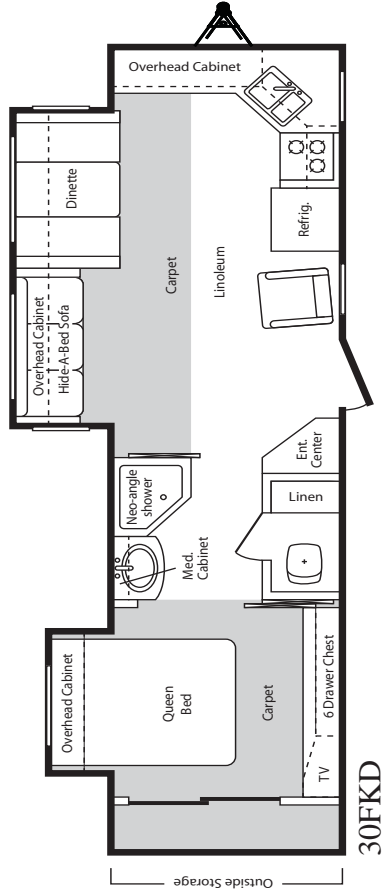
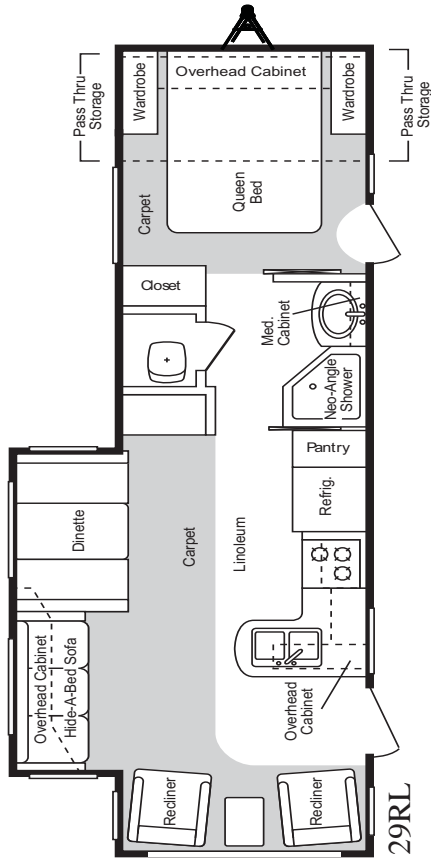
ITEM	29FK	29RL	30FKD	30PRS	31RLD	32PRD
Shipping Weight	7385	7580	8270	7685	8425	8355
Carrying Capacity	2615	2420	2925	3435	2580	2660
Hitch	980	765	1035	960	845	855
Exterior Length	33'	33'	35' 2"	33' 11"	35' 6"	35' 6"
Exterior Width	8'	8'	8'	8'	8'	8'
Ext Height - Top of A/C	11'	11'	11' 1"	11' 1"	11' 1"	11' 1"
Fresh Water Capacity	49	49	67	67	67	67
Waste Water Capacity	38	38	38	38	38	38
Grey Water Capacity	76	76	76	76	76	76
LPG Capacity (lb.)	60	60	60	60	60	60
Tire Size	225/75D15D	225/75D15D	225/75D15D	225/75D15D	225/75D15D	225/75D15D
Awning Length	18'	18'	14'	14'	18'	18' 6"

*Due to continuous product improvement, modifications may be made without prior notice or obligation. Specifications are calculated as base unit with standard equipment.*

# 2008 Fifth Wheels



# 2008 Travel Trailers



## Interior

### Living Area

	TT	FW
6' 8" interior headroom	S	NA
Residential carpeting and upholstery with fabric protector	S	S
Entertainment center w/DVD AM/FM CD surround sound	S	S
Tall slide room with "plate depth" overhead cabinets	S	S
Duel swivel rockers (Most Models)	S	NA
Duel recliner/glidors	O	S
Hide-a-bed sofa (Most models)	S	S
Pleated day/night shades	S	S
Deluxe oiled decorative lighting	S	S
Free standing end table with lamp (except 342 and 319)	NA	S
Decorative ceiling fan with 110V light fixture	NA	S
Deluxe crown molding	NA	S

### Kitchen

Solid "Tobacco Cherry" hardwood raised panel cabinet doors with cathedral tops.	S	S
Lighted range hood w/fan.	M	M
Wide deep drawers - real "Tobacco Cherry" wood.	S	S
Residential sized overhead "Tobacco Cherry" cabinets.	S	S
Deluxe bowl kitchen sink with oiled bronze high arch faucet.	S	S
Dual sink cover cutting boards.	S	S
Garbage can.	S	S
Silverware tray.	S	S
Power vent fan in the kitchen / living room.	S	S
Both dinette w/ storage cabinet and drawer (NA 325RLT)	S	S

### Bathroom

Deluxe residential porcelain toilet.	M	M
Larger residential size bath sink.	S	S
Tub / shower w/ oiled bronze enclosure.	S	S
Medicine cabinet - large mirrored door.	S	S
Oiled bronze bath sink faucet.	S	S
Oiled bronze vanity light.	S	S
Full linoleum bath flooring.	S	S
Solid panel doors w/ oiled bronze handles.	S	S
Deluxe wood grain towel holder.	S	S
Power vent fan in the commode area.	S	S

### Bedroom

Deluxe innerspring 60" x 80" mattress.	S	M
Quilted bedspread, two pillows w/ shams.	S	S
Overhead TV cabinet with cable and 110V outlet.	M	M
Six drawer bedroom dresser.	S	S
Solid panel bedroom doors with oiled bronze handles.	S	S
Full width sliding mirror closet doors.	S	S
Under bed storage with lift assist struts.	S	S

### Appliances

8 cu. ft. double door refrigerator.	M	M
Deluxe microwave oven with exterior exhaust fan.	M	M
15,000 BTU ducted roof air conditioner with wall mount thermostat and "Quick Cool".	M	M
High output range w/ automatic ignitor and 22" oven.	M	M
26" LCD HDTV.	M	M
TV antenna w/signal booster.	M	M

### Utilities

Water heater bypass kit.	M	M
10 gallon gas/electric DSI water heater.	S	S
Systems monitor panel.	S	S
55 amp converter.	S	S
30 amp electrical service.	S	NA
50 amp electrical service.	NA	S
Automatic ignition furnace w/ in floor ducts.	S	S
Phone Jack.	S	S
Cable TV hook up.	S	S
Carbon monoxide detector.	S	S

S- Standard      M-Moving to Montana Package  
O-Option          \*-Included in Package



Product information is as accurate as possible as of the date of this brochure. Features, floor plans and specifications are subject to change without notice. Please also consult Keystone's web site at [keystonerv.com](http://keystonerv.com) for current product information and specifications. Tow vehicle disclaimer: Caution: Owner's of Keystone recreational vehicles are strictly responsible for the selection and proper use of tow vehicles. All customers should consult with the motor vehicle manufacturer or the dealer concerning the purchase and use of suitable tow vehicles for Keystone products. Keystone disclaims any liability or damages suffered as result of the selection, operation, use or misuse of a tow vehicle. KEYSTONE'S LIMITED WARRANTY DOES NOT COVER DAMAGE TO THE RECREATIONAL VEHICLE OR THE TOW VEHICLE AS RESULT OF THE SELECTION, OPERATION, USE OR MISUSE OF THE TOW VEHICLE.

## Interior (Cont.)

### Option - Interior

	TT	FW
Free standing dinette with four chairs.	O	O
Recliner / glider in place of swivel rocker.	O	S
Second recliner / glider in place of swivel rocker.	O	S
High back desk chair (TT-32FLD Only).	O	O
Second low profile 13,500 BTU air conditioner in the bedroom.	NA	O
Wire and frame for bedroom air conditioner.	NA	O

### Exterior

15" Tires and rims.	S	NA
16" tires and rims.	NA	S
2" laminated fiberglass exterior walls.	S	S
5" fabricated steel truss rafters.	S	S
Molded front end cap.	NA	S
Block foam insulation in the sidewalls (R9).	S	S
Residential fiberglass insulation in the floor and roof (R14)	S	S
Fully enclosed and heated underbelly.	S	S
Enclosed and heated holding tanks and water lines.	S	S
Hitch and security lighting.	S	S
Extra wide 30" entrance door.	S	S
Radius baggage doors with locking latches.	S	S
Smooth operating, easy to use entry steps.	S	S
"Mountain Gold" radius wrap lower walls.	S	S
Easy lube axles.	M	M
Deluxe patio awning.	M	M

### Options - Exterior

Power tongue jack.	O	NA
Slide awning - main room.	O	O
Slide awning - bedroom.	O	O
Slide awning third room and or fourth room.	NA	O
Aluminum wheels w/chrome center cap.	O	O
Dual side pass thru storage area w/slide trays.	NA	O

### Value Package

Eight c.f. double door refrigerator.	*	*
Crank down rear stabilizer jacks.	*	*
Fold away exterior entry handle.	*	*
Interior entry and stairway handles.	*	*
Door side security light.	*	*
Road side security light.	*	*
Hitch light.	*	*
Sky dome over tub or shower.	*	*
Raised "Tobacco Cherry" refrigerator door panels.	*	*
DVD/CD player with AM/FM surround sound.	*	*
Duel bedroom speakers with on/off switch.	*	*
Electric front jacks (TT NA).	NA	*
Under mount crank down spare tire and carrier (FW Only).	NA	*
Tilt down bumper mount tire and carrier (TT Only)	*	NA
Satellite dish prep with RG6 Cable.	*	*
One piece full walk on roof.	S	S
Dark tinted windows.	M	M
Safety glass windows.	M	M
Exterior shower.	S	S
Roof ladder.	S	S
Aluminum bumper cover.	NA	S
Outstanding exterior storage.	S	S
Extended hitch pin.	NA	M
Heavy duty steel I-beam frame.	S	S

Mountaineer is a product of:



2642 Hackberry Dr.      Goshen, Ind 46526  
(574) 535-2100      [www.keystonerv.mountaineer.com](http://www.keystonerv.mountaineer.com)

Your Mountaineer Dealer:

