

KOUNTRY
Aire

2008 Fifth Wheel



*For the
Time of Your Life!*

KOUNTRY
Aire

Kountry Aire...



... Now is the Time

...to relax, enjoy the scenery and make some memories. This is the RV you've been searching for – a quality fifth wheel designed for the enviable few.

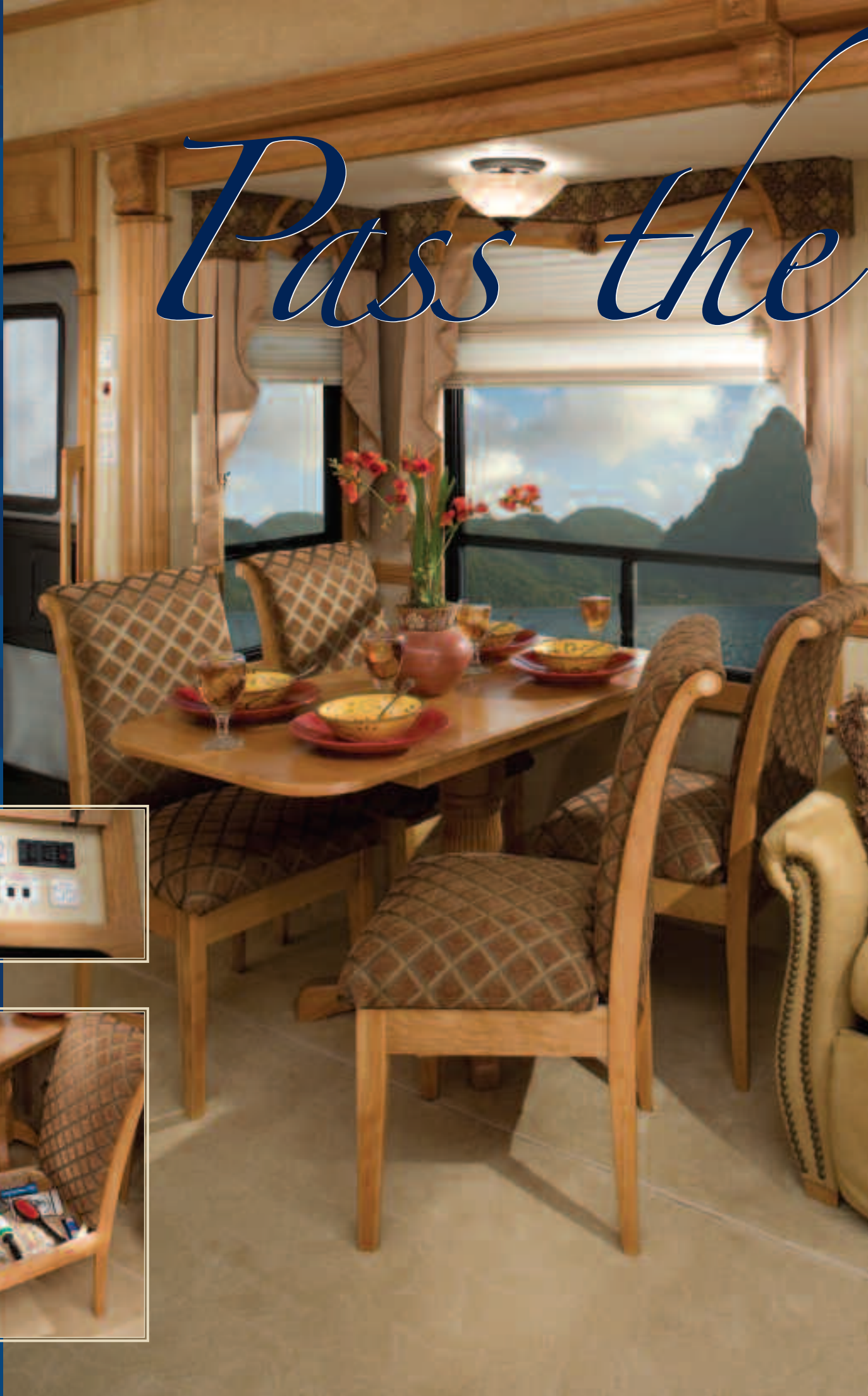
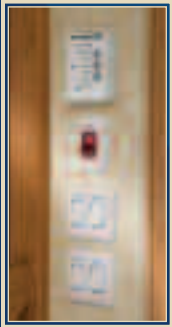
Take a look at the Kountry Aire by Newmar. It's a unique offering fully appointed with luxury, quality and comfort. The handcrafted wood accents, timeless grandfather clock and intricate design details are just what you have been looking for. And the extra-mile construction features that Newmar carefully builds into each unit are the hidden extras that make all the difference. They are the definition of quality construction and the precursors to dependability and peace of mind.

This isn't just any RV. It's a luxury suite that goes beyond your needs and meets your discriminating taste. So take a closer look. Now's the time.

Beauty. Quality. Peace of mind.
That's the Newmar difference.



Pass the





Spend the



37KSCS shown with Coastal Cherry hardwood cabinetry.

Time

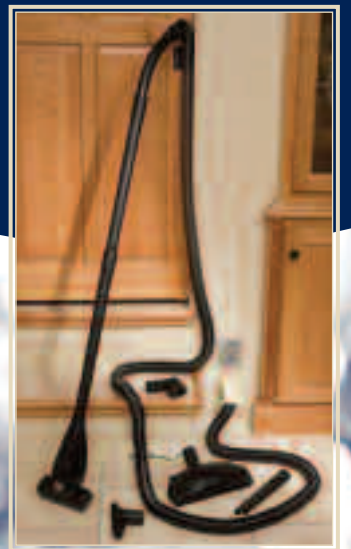
...cooking up your favorite dishes in the Kountry Aire kitchen. Craft everything from five-course meals to late-night snacks with the convection microwave; flush-mount, recessed three-burner cooktop with electronic ignition; and raised-panel, optional four-door Norcold® refrigerator with water dispenser.

The deep Samsung Staron™ solid surface countertops provide excess room to prepare your favorite recipes. A bi-fold, solid-surface cover that hides the cooktop and sink covers makes even more room available. Take advantage of the built-in Corian® knife block and paper towel holder – both within easy reach.

The SuperStorage™ hardwood cabinets provide plenty of space to house your cooking needs – everything from specialty ingredients to sugary treats for the grandkids. Cathedral overhead compartments and floor to ceiling cabinets fill the kitchen with grandeur and rich ambiance. The roomy pantry features fully adjustable slideout shelves and extra-deep drawers that easily glide on ball-bearing guides for effortless access. The lighted toe kicks beneath the cabinets and rope lighting in the ceiling add a unique touch.

Enjoy a meal or play a game of cards at the freestanding super slider hardwood table. The two fully padded dinette chairs provide you with in-seat storage perfect for your place mats, playing cards and miscellaneous essentials. The classy fluted-base table easily expands to make room for more guests, and two additional chairs can be added. An overhead light and day/night pleated shades give just the right amount of light and privacy for those early-morning cups of coffee or late-night chess games.

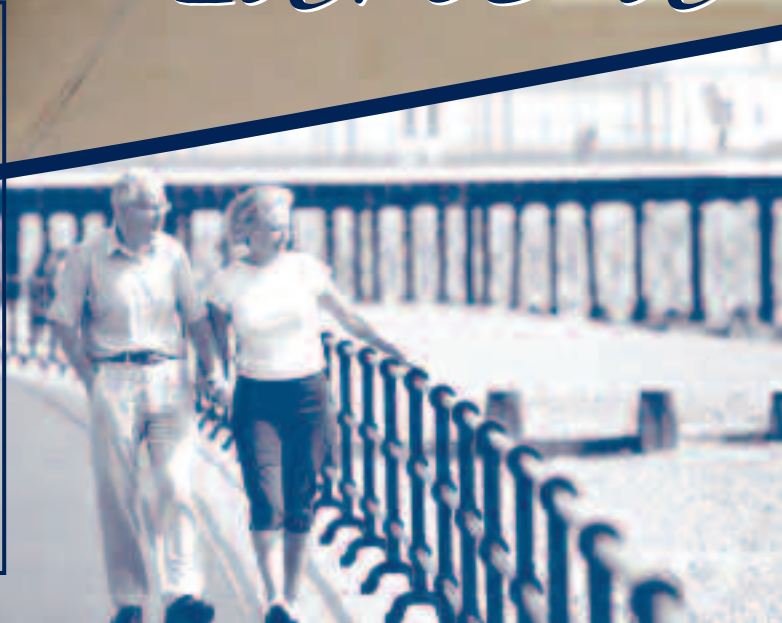
The standard grandfather clock cabinet houses your keys, while the optional central vacuum makes cleaning up a snap. Light switches are grouped together and the systems command center is kept out of sight within a hardwood cabinet just above the entry door. **Another way Kountry Aire beauty is found in the smallest of places.**





37KSCS shown in Espresso decor.

Take a





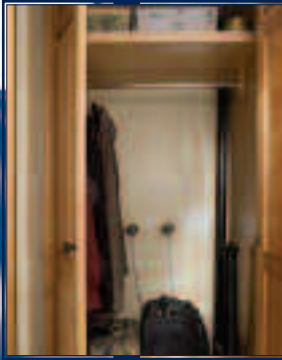
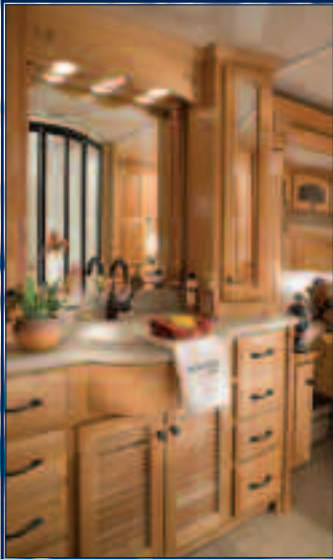
Moment

...to sit back and enjoy your travels. What better place than the posh living area of your Kountry Aire where the Flexsteel® sleeper-sofa and matching glider/recliner easy chairs provide you with superior comfort and support? Let the distinct décor soothe you with complementing sculpted carpeting, window coverings, decorative wall border and furniture fabrics.

When it's time to relax, curl up in front of the 32-inch (or

37-inch depending on floorplan) LCD TV and Surround Sound system with DVD, CD and AM/FM stereo tuner. Easily check your email and play a game of Solitaire on your laptop that can be placed on the pullout shelf located just below the television on select models.

No matter the outside conditions, be in complete comfort. The Brisk Air central air conditioner keeps you cool on warm days, while the 42,000-Btu furnace with in-floor ducted heat keeps you toasty when temperatures dip down. Stay warm and cozy with the optional fireplace as you lose yourself in your favorite book.



Esca

Be wooed into restful slumber in the bedroom suite that is tucked behind a six-panel, hardwood arched pocket door. The spacious King Koil™ bed with a hardwood headboard provide you with total comfort and style. The luxury continues with the sensuous suede bedspread, pillow shams and monogrammed linen package. Take time to truly unwind in front of the 20-inch LCD TV.

A floor safe keeps your valuables secure inside the spacious cedar-lined SuperStorage™ wardrobe with laundry hamper. Store extra clothes and travel essentials beneath the bed and easily access them, thanks to helpful lifts. Kountry Aire comes prepped for a washer and dryer to be conveniently located in the bedroom suite.

After a long day of travels and exploration, unwind beneath the warm,





Make the Day

flowing streams of the Kountry Aire shower. Get lost behind the beautiful glass enclosure and enjoy the roomy one-piece fiberglass shower with a molded seat, adjustable height showerhead, courtesy light and skylight. The homey comforts continue with a Thetford® Aqua Magic Style™ II china toilet, Create-A-Breeze vent with auto lift and a magazine rack inside the water closet. From water closet to wardrobe, you'll feel like you're home.



Beauty is...



While you'll notice the Newmar beauty in the sleek exterior graphics, rich fabric choices and cedar-lined wardrobe, most of the beauty you'll experience isn't often seen. Actually, it's in places you may never see. It's tucked inside the hardwood cabinets, behind the crown molding and beneath the padded carpeting. From the aerodynamic front-end cap to the LED tail lights, the Newmar difference is encased in every aspect of the unit, as shown in the Extra Mile Differences on the next few pages. In the end, these unique Newmar features will not only give you that wonderful experience you're looking for, they will give you peace of mind so all you have left to do is build memories to cherish.



*...more
than skin deep!*



Kountry Aire Extra Mile

What makes Newmar different? Newmar understands the real world of RV travel and works diligently to design and build quality products that provide comfort and superior performance. Newmar designers do things a bit differently, taking more time and using more materials to get it right. As a vertically integrated manufacturer, Newmar builds much of the recreation vehicle themselves and relies less on sub-assembly suppliers. That means more control over design and quality. Newmar engineers better understand the unit as a whole and know how to create a solid, strong RV that offers innovation, convenience and durability. Going that extra mile to create a top-quality fifth wheel results in a peace of mind unique to Newmar owners. That's the Newmar difference.



Newmar Builds Walls and Roofs residential-style, with studs located 16 inches on-center. Extra C-channel aluminum studs and extra welds may cost more, but they provide a superior wall structure. Stud construction allows for residential-style wiring and conveniently located switches. Walls and wall studs are then bonded with a technologically-advanced adhesive, Sikaflex®, that is durable and flexible to absorb and soften the effects of travel.



Cantilevered Aluminum Roof Trusses are fabricated by Newmar and placed 16 inches on-center to provide superior strength. Again, extra aluminum and extra welds provide extra durability.



The Total Comfort® Dual In-Roof Ducting System was engineered by cooling experts especially for Newmar. With multiple strategically placed vents, the system provides true central air conditioning for unparalleled cooling efficiency, balance and whisper-quiet operation.

An Incomparable Superstructure, the Kountry Aire Chassis is designed and built by Newmar with stronger steel, extra reinforcements and additional welds to make it exceptionally robust. The huge 12-inch steel I-beams provide superior Moment of Inertia (stiffness) and Section Modulus (bending stress) over smaller, thinner I-beams and stacked tube steel. Engineers take advantage of the entire height of the I-beam to attach full 12-inch steel outriggers for extended stability and strength. Many other outriggers are partial height. Newmar believes that a home on wheels should start with a solid and stable foundation.



Newmar-Made Skid Bars are a lot different from the flimsy ones that are more commonly used. Constructed of thick bar steel and reinforced with even more steel, this is the super-duty, real-world version to help protect the RV underbelly from abruptly-angled roadway approaches. A Newmar exclusive.

Another Newmar Innovation, the Slideout Cog Wheel, was designed for a fuller engagement of the gears to prevent common gear slippage. The complete slideout system – from the superior strength foundation through the durable high-torque motor mechanism, to the independent operation and the unique self-storing travel-lock arms – is designed to provide years of convenient, smooth, dependable service.



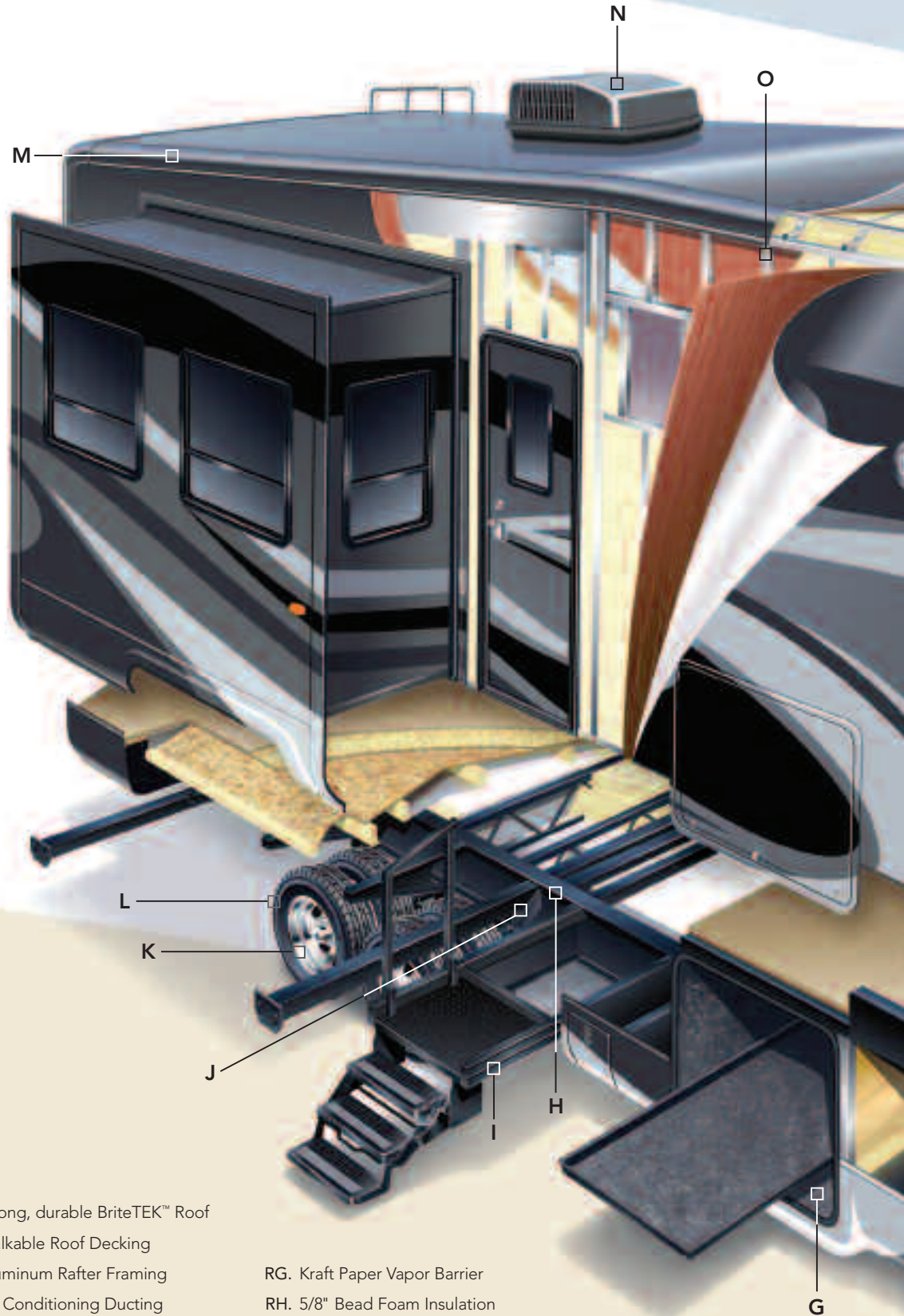
Differences

Newmar Express Limited Warranty

As proof of our commitment to you, we at Newmar back every Kountry Aire fifth wheel with our industry-leading, two-year Newmar Express Limited Warranty. Ask your dealer for details.

Your Kountry Aire fifth wheel reflects Newmar's long history of product innovation and industry "firsts." You can depend on the exacting standards and meticulous care by which this fifth wheel is built. It's a showcase for Newmar excellence.

- A. Aerodynamic Gelcoated Fiberglass End Caps
- B. Gelcoated Exterior Sidewall
- C. Dark Tinted Safety Glass
- D. Dual Battery Box
- E. Molded Lower Sidewall Skirting and Gooseneck
- F. Power Front Jacks
- G. Pass-Through SuperStorage™
- H. 12" I-Beam Custom-Built Frame
- I. Sliding Porch
- J. Full Height Frame Outriggers
- K. Dual Tandem Tires and Rims
- L. MOR/ryde® Suspension
- M. Radius Aluminum Roof Wraps
- N. 15,000 BTU Total Comfort™ Ducted Air Conditioning
- O. 16" O.C. Aluminum Framing with C-Channels
- P. BriteTEK™ Roof
- Q. Walkable Roof Decking
- R. 16" O.C. Aluminum Roof Rafters
- S. Side Awning



Roof R Value = 24

- RA ——— □
- RB ——— □
- RC ——— □
- RD ——— □
- RE ——— □
- RF ——— □
- RG ——— □
- RH ——— □
- RI ——— □
- RJ ——— □

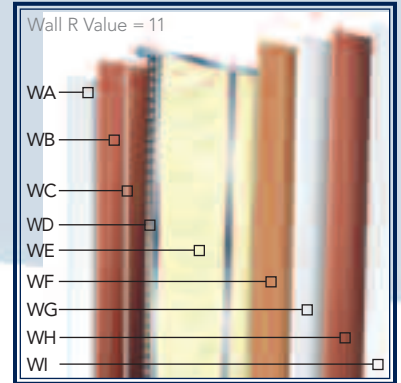
- RA. Strong, durable BriteTEK™ Roof
- RB. Walkable Roof Decking
- RC. Aluminum Rafter Framing
- RD. Air Conditioning Ducting
- RE. Sikaflex® Adhesive
- RF. R-19 Fiberglass Batten Insulation

- RG. Kraft Paper Vapor Barrier
- RH. 5/8" Bead Foam Insulation
- RI. 3/16" Plywood Ceiling Panel
- RJ. Padded Vinyl Overlay

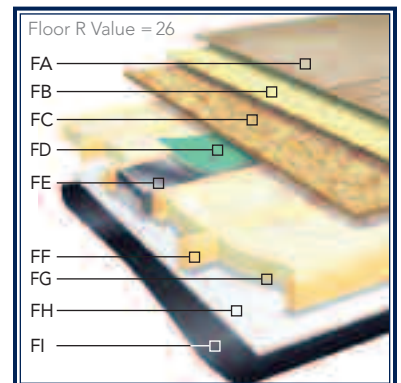
The Limited Five-Year Structural Warranty

If any part of your Newmar recreational vehicle superstructure (which is the steel/aluminum structure of the sidewall, roof, or frame) fails to perform properly within five years, from the date of purchase, due to faulty workmanship or material supplied by Newmar, it will be repaired without charge for either parts or labor by Newmar. This structural warranty is available only to the original purchaser and is non-transferable.

— the L



- WA. Gelcoated Exterior Sidewall
- WB. 3/16" Plywood Exterior Wall
- WC. Sikaflex® Adhesive
- WD. Aluminum Framing with C-Channels
- WE. R-7 Fiberglass Batten Insulation
- WF. Kraft Paper Vapor Barrier
- WG. 5/8" Bead Foam Insulation
- WH. 3/16" Plywood Wall Panel
- WI. Vinyl Overlay



- FA. Carpet/Vinyl Flooring
- FB. Residential-Grade Carpet Padding
- FC. 5/8" Floor Decking
- FD. Foam Panel for Added Insulation and Noise Reduction
- FE. Aluminum Heat Ducting
- FF. 2" x 3" Wood Floor Joists
- FG. R-19 Fiberglass Batten Insulation
- FH. 5/8" Bead Foam Insulation
- FI. Aluminum Underbelly 4' x 8' Sheets

Beauty Within

Kountry Aire Floors are extraordinarily heated, double insulated and constructed using 24-foot continuous run sheets of Weyerhaeuser sub-flooring.

Fewer seams reduce the infiltration of noise, moisture, and outside heat and cold. Most other RV floors are insufficiently heated in the extremities and pieced together with 4-foot sheets.



Newmar Inspectors review each and every coach at three major manufacturing points and at several targeted spots throughout construction. Not some time, not part-time; Newmar allocates full-time, dedicated, experienced positions to assure quality and maintain construction integrity.

The Newmar-Originated Slideout, with its 2x4 steel rails and massive reinforcement, is the strongest, most reliable and most durable on the market. A superior-strength platform results from welding hefty guide rail tubes to both mainframe rails and welding extra reinforcement into the system. Closed-channel frames keep small animals and outside debris from entering the coach.



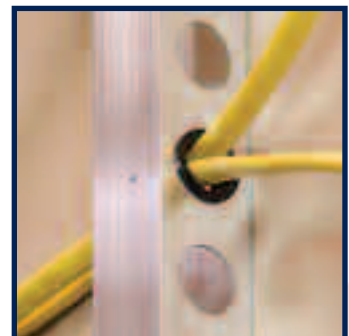
Newmar Pioneered and has a Patent on the Flat-Floor Slideout. But sliding a room in and out poses some out-of-the-way engineering and sealing challenges to do it right. Newmar developed an improved slideout wedge roof design that forms a tighter closure when the room is extended. A specially developed double-bulb, superior-memory seal provides protection from outside elements and insects, and sweeps off debris on room retraction.



Hardwood Cabinets are created by Newmar designers and constructed one at a time by skilled cabinetmakers. For increased stability, the frames are both glued and screwed. The finish is completed after assembly for a superior, unitized presentation.



Kountry Aire Solid Surface Countertops are hand-sanded, custom-fitted and seamlessly integrated with backsplashes and in-line sinks to create a single surface with no cracks for easy clean up. They are non-porous, and heat and scratch resistant. Newmar craftsmen expertly fit, finish and install them.

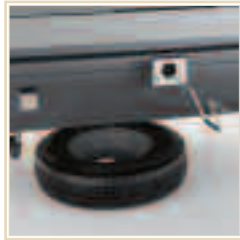


Grommets in Stud Holes provide extra protection to wires for years of trouble-free use. Newmar uses a premium-grade, non-sag elastomeric wall adhesive, Sikaflex®, to completely bond the wall and studs.

This "beauty" is no pushover. It is a robust contender built to answer the rigors of travel with incomparable stability and aerodynamic design. It's sleek, yet stout, and prepared to meet and exceed your needs.



A



B



C



(A) The Optional Rear Ladder provides easy access to the strong, BriteTEK™ covered walkable rooftop.

(B) Undermounted and Recessed 16-Inch Spare Tire is accessed via a handy lift mechanism behind a lockable door.

(C) 110-Volt and 12-Volt Electrical Outlets, an external cable jack and a 15-foot coiled, quick-connect water hose with sprayer are conveniently grouped, easily accessed and kept clean just inside the exterior SuperStorage™ area. Tucked away, yet handy.

(D) Kountry Aire Tows Dependably on Dual Tandem Axles and 16-Inch UniRoyal® Tires as standard equipment. MOR/ryde® suspension cushions and absorbs road shock to provide a softer ride and smoother, safer towing. Stainless steel wheel simulators are standard, too.



D

Exteriors



Pebble Grey
(Standard)

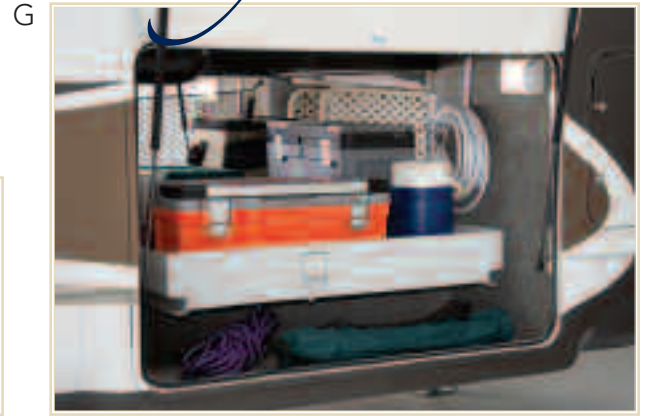


Basil



Fawn

Discover the Everlasting Beauty



(E) Kountry Aire Comes With Two Extra Large 40-Pound Propane Gas Bottles with an automatic regulator as standard equipment. Access for maintenance is exceptionally easy thanks to a heavy-duty slideout tray.

(F) MOR/ryde™ Pin Box allows you to enjoy a smooth, comfortable towing experience. The optional pin box diminishes the transfer of forces from the fifth wheel to the truck, acting as a cushion to reduce the effect of road shock.

(G) Expansive SuperStorage™ Pass-Through Storage Area is heated and lighted. It boasts a pullout storage tray, a handy cargo hook, cargo net and three-way access. Hydraulic assist struts on the compartment doors allow for easy loading and unloading of items and are adjustable for hold-open heights.

(H) Manually Operated Sliding Porch with triple step and handrail is standard. It provides a wider platform for safety and stability entering and exiting the coach. A power option to the porch is also available with easy-to-reach control in a weatherproof compartment.



Espresso



Cayenne

Enjoy the Classic Design

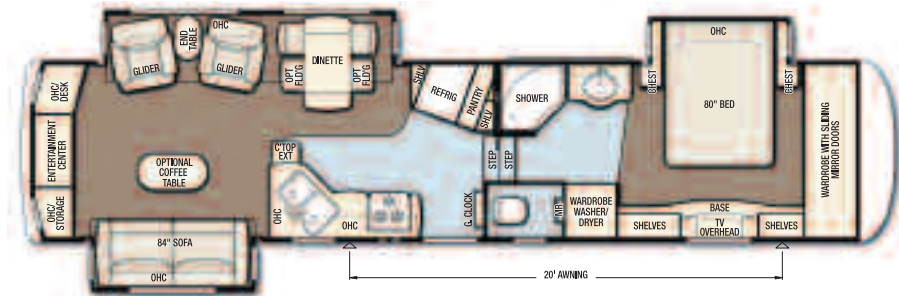
Model	KAFW 36KSSH
Tire Size	235/85R16-E
GAWR	9,000
GVWR	20,000
App. Length	39' 9"
App. Height	12' 11"
Width	101"
App. Dry Weight	16,915
App. Hitch Weight	3,735
Fresh Water (gal.)	75
Grey (gal.)	97
Sewage Cap. (gal.)	55
App. Hitch Height	47"
Heat Cap. (BTU)	42,000



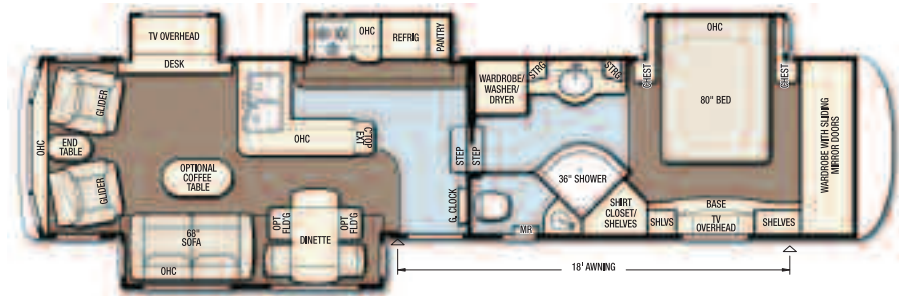
Model	KAFW 37KSCS
Tire Size	235/85R16-E
GAWR	9,000
GVWR	20,000
App. Length	39' 11"
App. Height	12' 11"
Width	101"
App. Dry Weight	16,400
App. Hitch Weight	3,115
Fresh Water (gal.)	75
Grey (gal.)	97
Sewage Cap. (gal.)	55
App. Hitch Height	47"
Heat Cap. (BTU)	42,000



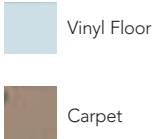
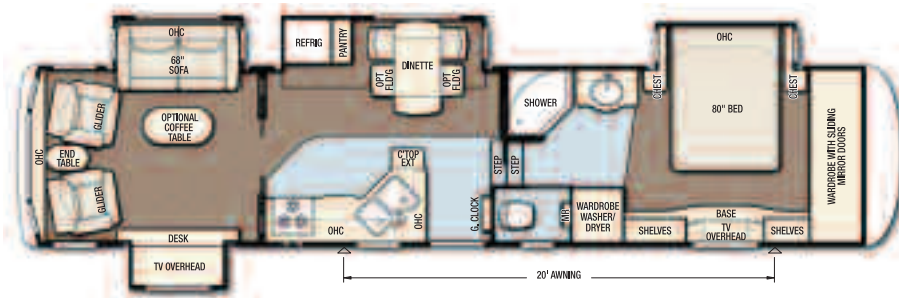
Model	KAFW 37LSRE
Tire Size	235/85R16-E
GAWR	9,000
GVWR	20,000
App. Length	40' 3"
App. Height	12' 11"
Width	101"
App. Dry Weight	16,840
App. Hitch Weight	3,535
Fresh Water (gal.)	75
Grey (gal.)	97
Sewage Cap. (gal.)	55
App. Hitch Height	47"
Heat Cap. (BTU)	42,000



Model	KAFW 37RLCS
Tire Size	235/85R16-E
GAWR	9,000
GVWR	20,000
App. Length	39' 11"
App. Height	12' 11"
Width	101"
App. Dry Weight	16,825
App. Hitch Weight	3,195
Fresh Water (gal.)	75
Grey (gal.)	97
Sewage Cap. (gal.)	55
App. Hitch Height	47"
Heat Cap. (BTU)	42,000



Model	KAFW 38SLCK
Tire Size	235/85R16-E
GAWR	9,000
GVWR	20,000
App. Length	40' 10"
App. Height	12' 11"
Width	101"
App. Dry Weight	17,350
App. Hitch Weight	3,470
Fresh Water (gal.)	75
Grey (gal.)	97
Sewage Cap. (gal.)	55
App. Hitch Height	47"
Heat Cap. (BTU)	42,000



Floorplan Options

King Size Bed

(in lieu of Queen Size Bed)
Available on all models.



Tub

(in lieu of Shower)
Available on 36KSSH, 37LSRE
and 38SLCK.



Booth Dinette

(in lieu of Freestanding Dinette)
Available on all models.



*Oil-Rubbed
Bronze*
Standard Hardware



Samsung Staron™
Solid Surface
Standard Countertop



Embrace the Timeless Décor

The Kountry Aire designers have chosen a palate of richness and beauty with hardwood cabinetry to bring a sense of warmth and luxury to your fifth wheel. Enjoy your travels with the standard offerings or choose an alternative décor to make your Kountry Aire uniquely yours.

Simulated Plank



Simulated Plank



Simulated Plank



Simulated Plank



Vinyl Flooring (Standard)



*Simulated
Ceramic Tile*



12" Marble-Look



Basil



Cayenne



Espresso



Fawn

Optional Features

Exterior

Full-Paint Masterpiece Finish™ with Diamond Shield Protective Film on Lower Front

Air Conditioning and Heating

15M Penguin Central Air Conditioner

15M Penguin Central Air Conditioner with Heat Pump

Extra 13.5 Penguin Central Air Conditioner in Bedroom

Wire and Brace for Second Air Conditioner

Appliances and Accessories

Icemaker Added to Refrigerator*

Norcold® 12 cu. ft. Four-Door Refrigerator

Norcold® 12 cu. ft. Four-Door Refrigerator with Icemaker and Water Dispenser*

Three-Burner Recessed Cooktop with Drawers Below in Place of Oven

Central Vacuum with Floor Port and Deluxe Tool Kit

30" GE Profile Advantium™ Microwave Oven*

Electric Fireplace*

Roof-Mounted Satellite Prep

Two-Piece Washer/Dryer*

Cabinets and Furniture

Coastal Cherry Hardwood Cabinetry

Light Maple Glazed Hardwood Cabinetry

Ginger Maple Glazed Hardwood Cabinetry

Built-In Booth Dinette

Leather/Vinyl Sofa

Leather/Vinyl Glider/Recliner(s)

Island Kitchen Base Cabinet*

King Bed with 72" x 80" King Koil™ Mattress*

Two Fixed Dinette Chairs with In-Seat Storage

Two Folding Dinette Chairs with In-Seat Storage

Folding Desk Chair*

Queen Anne Style Sofa Coffee Table

Electrical Features

7.0 kW Cummins Onan® Generator with Auto Changeover and Gen Prep (Generator Prep - Includes Energy Command, Start Switch and Fuel Tank with Gauge)

Generator Prep

Solar Prep

Mid-Ship Side Turn Signals

Exterior Features

Bike Rack Carrier

Gelcoated Fiberglass Roof and Top Wrap

Power Sliding Entry Porch with Collapsible Handrail and Power Triple Step

Rear Ladder

Exterior Storage Compartments in Bottom Wrap

Interior Features

12" Marble Tile-Look Floor in Kitchen, Bath, Foyer and on Steps

Simulated Ceramic Tile in Kitchen, Bath, Foyer and on Steps

Simulated Plank Floor in Kitchen and Foyer

Lined Day/Night Pleated Shades

Plumbing and Bath Features

Exterior Shower

Fiberglass Tub with Glass Door

12V Heat Pads for Holding Tanks (N/A CSA Units)

Thetford™ Aria Sculptured China Stool

Construction Features

Power Lock Arms

Windows, Awnings and Vents

Carefree® TravelR Awning

Carefree® Summit Armored Slideout Cover Package*

Carefree® Summit Armored Window Cover Package*

Fan-tastic® Vent with Rain Sensor in Kitchen and Bathroom

Double-Pane, Tinted Safety-Glass Windows

Chassis Features

MOR/ryde® Independent Suspension with Disc Brakes

MOR/ryde® Rubber Pin Box

Electric Over Hydraulic Disc Brakes

Four Hydraulic Jacks (Includes Battery)

Independent Power Front Jacks

Rear 12V Power Twin Stabilizer Jacks

Standard Features

Air Conditioning and Heating

15M Brisk Air Central Air Conditioner

Two 40 lb. Propane Bottles with Auto Regulator on Sliding Tray

42,000 BTU Furnace with In-Floor Ducted Heat

Empty Propane Light Indicator

Propane Leak Detector

Appliances and Accessories

12 Gal. Gas/Electric Water Heater with Direct-Spark Ignition

30" Convection Microwave

Recessed Three-Burner Cooktop with Electronic Ignition

22" Oven with Glass Door and Electronic Ignition Entertainment Package:

32" or 37" LCD TV* and Surround Sound System with Recessed Speakers, DVD, CD, AM/FM Stereo Tuner, MP3 Adapter, Video Selector Switch and 20" LCD TV in Bedroom

Norcold® 10 cu. ft. Refrigerator with Thermostat and LED Readout

Flush-Mounted Solid Surface Bi-Fold Range Cover

Cable TV Connection with RG-6 Coax

Living Room Ceiling Fan

Corian® Knife Block behind Range

Hardwood Raised-Panel Refrigerator Front

Magazine Rack in Water Closet

Paper Towel Holder in Kitchen

Phone Jack in Living Area

Secondary Phone Jack for Internet Access at Dinette or Desk

TV Antenna with Power Booster and Two Interior Jacks

Prep for Ground Satellite Dish - Phone, TV Jack and Receptacle

Two Bedroom Speakers with On/Off Switch

Washer/Dryer Prep

Living Room Pullout TV Swivel/Slide Tray

Fire Extinguisher, Smoke Detector and Carbon Monoxide Detector

Cabinets and Furniture

Oak Hardwood Cabinets with Raised-Panel Cathedral Overhead Cabinet Doors

Knife Hinges

Flexsteel® Furniture

Hide-A-Bed Sofa with Decorative Pillows*

Glider/Recliner Chair(s)*

Queen Anne Style End Table*

Residential-Style Ball Bearing Drawer Guides

Finished Drawer Interior Construction

Freestanding Dinette Table

Two Dinette Chairs with In-Seat Storage

Staron™ Solid Surface Kitchen Countertop with Undermounted Solid Surface Bowls

Flush Solid Surface Kitchen Sink Covers

Staron™ Solid Surface Bathroom Countertop with Solid Surface Bowl

Cedar-Lined SuperStorage™ Bedroom Wardrobe with Full-Width Shoe Rack

Cedar-Lined Hamper in Bedroom

Lifts on Bed Top

Kitchen Pantry with Pullout Shelves*

Computer Desk*

Decorative Bedroom Dresser Toe Kick

Queen Bed with King Koil™ 60" x 80" Mattress

Hardwood Grandfather Clock Cabinet with Storage

Bed Slideout Overhead Cabinets

Drawers at Bath Lavatory Base

Hardwood Entry Door Trim

Hardwood Window Sills and Frames

Hardwood Decorative Front Wardrobe Header

Kitchen Countertop Extension*

Hardwood Ceiling Crown Molding Throughout

Electrical Features

110V Exterior Receptacle

12V Lighting Throughout

Halogen Ceiling Lights Throughout

50 Amp Electrical Service with Detachable Cord

75 Amp Converter

Electrical Features (cont.)

Convenience Lights at Main Entry Door, Entry Door Step, Sewer Hook-Up, Hitch and Water Works Compartment

Decorative Light over Dinette

Dual Battery Box Compartment

Three Exterior Security Lights

Fluorescent Light over Kitchen Sinks

Decorative Tube Light at Kitchen Toe Kick

Lighted Exterior Storage Compartments

Controlled by Interior Master Switch

Wall Reading Lights in Living Area Slideouts

Additional Water Pump Switch in Water Works Compartment

Cable Jack and 110/12V Outlet in Door Side

Pass-Through Storage Compartment

Battery Disconnect Switch

Lighted Wardrobe

Mood Lighting Recessed into Ceiling

Command Center for Electrical Switches

Exterior Features

Painted Graphics

30" Gelcoated Radius Entry Door

BriteTEK™ Roof with Walkable Decking and Radius Aluminum Roof Wrap

Cargo Hook in Exterior Storage Area

Cargo Net in Exterior Storage Area

Molded Pin Box Shroud

Lighted Exterior Grab Handle at Entrance Door

Gelcoated Exterior Sidewalls and Baggage Doors

Gelcoated Fiberglass End Caps

Rear Skid Bars Prepped for Bike Rack Attachment

Sliding Entry Porch with Collapsible Handrail and Triple Step

Heated Pass-Through SuperStorage™ Basement Compartment

Dedicated Compartment in Basement for Utilities

Door Struts in Pass-Through SuperStorage™

Mud Flaps

Sliding Storage Tray in Pass-Through SuperStorage™

Interior Features

Padded Vinyl Ceiling

Sculpted Carpet with High-Density Padding in Living Room and Bedroom

Vinyl Floor in Kitchen, Foyer and Bath

Convenience Package:
Floor Safe, Hair Dryer, Cordless Vac and Decorative Sofa Bed Pillows

Day/Night Pleated Window Shades with Jabots in Living Room and Bedroom

Vertical Blinds on Rear Bay Window

Decorative Wall Border

Hardwood Chair Rail

Interior Assist Handle at Main Entry Door

Kitchen Wastebasket

Lazy Susan in Kitchen Overhead Cabinet*

Suede Quilted Bedspread with Shams and Accent Pillows

Monogrammed Linen Package:
Two Bath Towels, Hand Towels, Wash Cloths and Pillow Cases and one Sheet Set

Hardwood Residential-Style Raised-Panel Headboard

Molded Silverware Divider Tray

Laminate Woodgrain Steps with Hardwood Bullnose Trim

Leaded Glass Door Accents in Living Room and Bedroom

Decorative Hardwood Arched Pocket Door Headers

Hardwood Raised Six-Panel Interior Passage Doors

Decorative Hardwood Slide Fascias

Your Official Kountry Aire Dealer:

KOUNTRY Aire ²⁰⁰⁸ Fifth Wheel

Plumbing and Bath Features

Demand Water System with SHURflo® Pump

Oil-Rubbed Bronze Hardware and Fixtures

Bath Accessories:

Toilet Paper Holder, Toothbrush Holder, Towel Ring and Two Robe Hooks

One-Piece Fiberglass Shower with Molded Seat and Glass Enclosure

Adjustable-Height Shower Head

Decorative Shower Door Graphics

High-Rise Kitchen Faucet with Separate Pullout Sprayer

Medicine Cabinet with Deluxe Lighting

Towel Ladder on Hinged Bath Door

Monitor Panel

Sewage Holding Tank Rinse

Sewage Hose Storage Tray

Lighted, Heated and Enclosed Exterior Water Works Compartment

Thetford™ Aqua Magic II Toilet with Spray Attachment

Shower Courtesy Light

In-Line Water Filter for Entire Unit

Water Heater Bypass

15' Quick-Connect Hose and Sprayer in Pass-Through Storage

Composite R-Values:

Roof: R-24 Floor: R-26 Sidewalls: R-11

Construction Features

12" I-Beam Custom-Built Frame

5/8" Structurwood® Floor Decking

5/8" Bead Foam Insulation Laminated in Sidewalls and Ceiling

Aluminum Framed Sidewalls, Roof, Front and Rear on 16" Centers

Fully Heated and Insulated Holding Tanks

Enclosed Underbelly with 4' x 8' Sheets of Aluminum Laminated to 5/8" Bead Foam

PolarPak R-19™ Insulation in Roof, Floor, Front and Rear End Caps

Composite R-Values:

Roof: R-24 Floor: R-26 Sidewalls: R-11

Windows, Awnings and Vents

Create-A-Breeze Vent with Auto Lift in Bathroom

Carefree® Fiesta LTD Armored Side Awning

Dark Tinted Safety-Glass Windows

Skylight in Bathroom*

Chassis Features

Dual Tandem Axles

Shock Absorbers

Recessed 16" E-Rated Spare Tire with Lift Kit

16" E-Rated Tires

MOR/ryde® LRE Suspension

EZ Lube® Axles

Stainless Steel Wheel Simulators

Power Front Jacks

Quick-Release Pin for Front Jack Legs

Rear Stabilizer Jacks

* Check with Dealership on Floorplan Availability



WHEN YOU KNOW THE DIFFERENCE™

NEWMAR CORPORATION

355 N DELAWARE ST

PO BOX 30

NAPPANEE IN 46550-0030

574-773-7791 Fax 574-773-2895

www.newmarcorp.com

Some features in our literature are optional. Colors and finishes are photographic representations. The actual materials may look different. Prices, specifications and floorplans are subject to change at Newmar's discretion, without prior notice or obligation. Please see your dealer for actual samples and specifications. ©2007 Newmar Corporation. Litho in USA. NEW21368 5/07-10M