

Hornet

by Keystone

Loaded For Family Fun!



Hornet
by Keystone



Hornet
by Keystone

Hornet has evolved as one of the most family affordable brands on the market. Your family is sure to enjoy the increased spaciousness of the Hornet with it's 81" ceiling and 6' ceiling in the slide rooms. Our swivel entertainment center comes loaded with an LCD Television, AM/FM CD player with DVD and MP3 port, DVD shelf, surround sound speakers and added storage space. Hornet's master suite provides spacious sleeping quarters and loads of storage space.

Loaded For Family Fun!





Cosmic



Wheatstone



Tropic

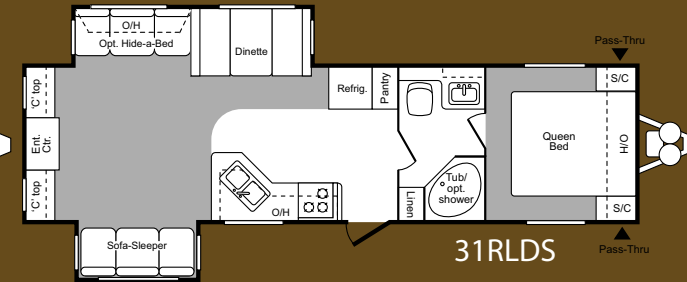
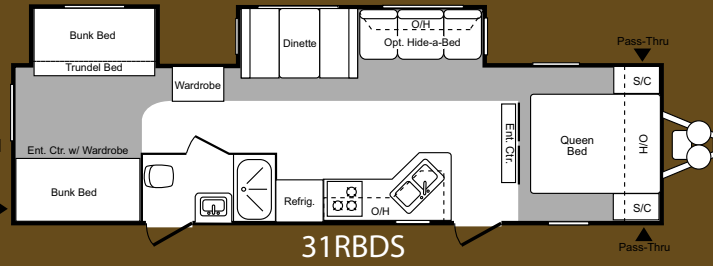
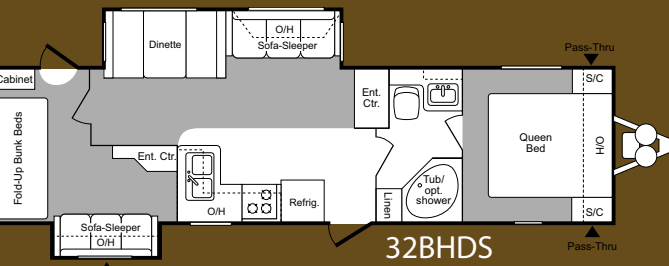
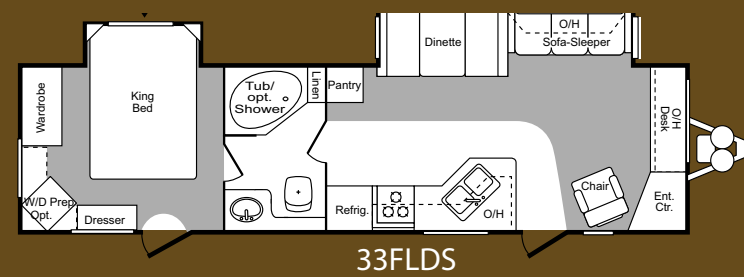
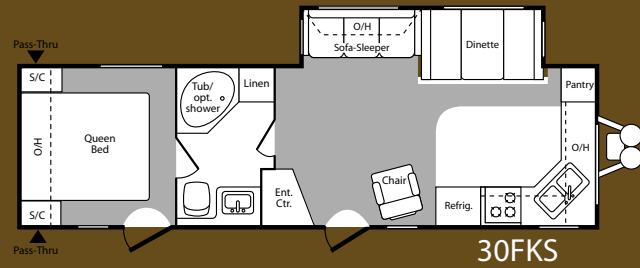
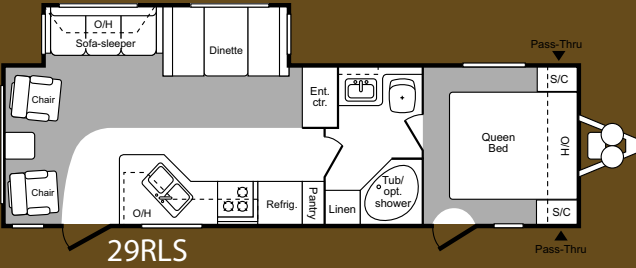
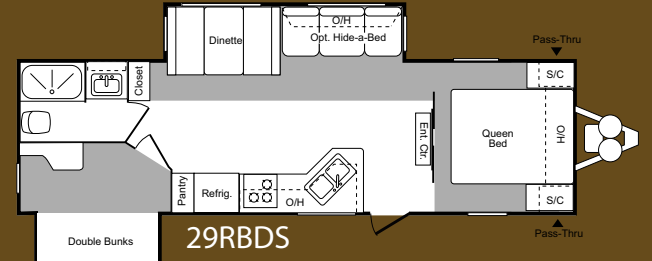
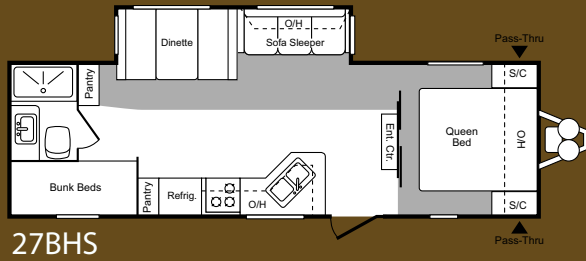
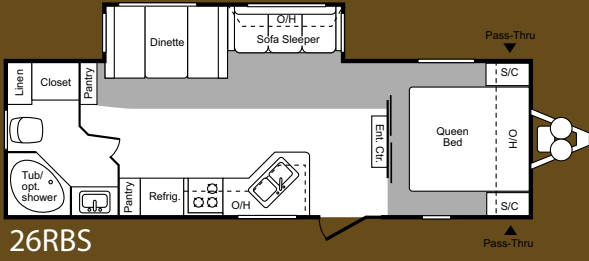


Hornet's family friendly kitchen comes packed to meet the needs of any sized family.

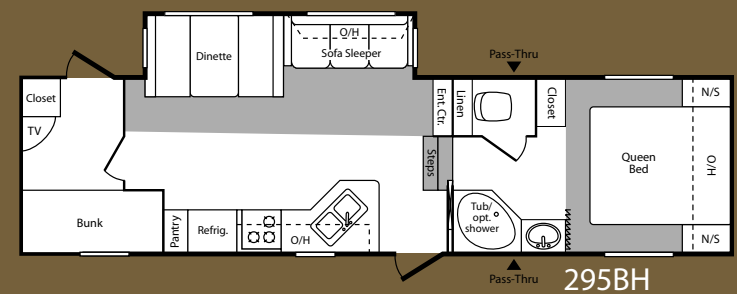
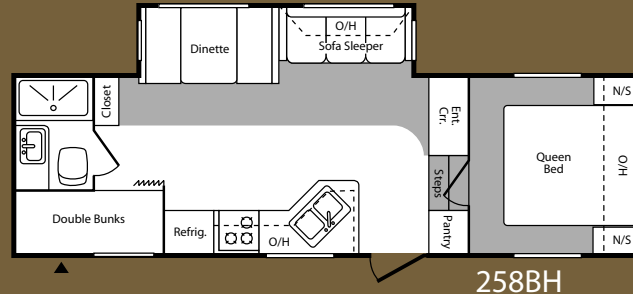
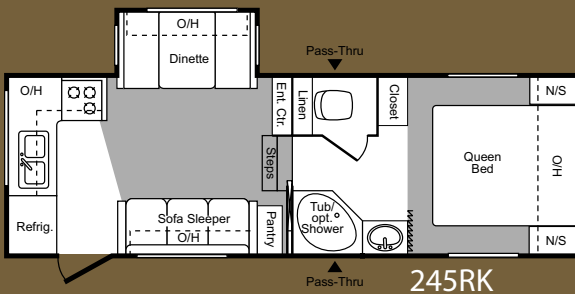
- Largest kitchen sink in the industry
- Three all wood drawers
- Overhead storage cabinets
- Oversized Pantry
- Large double Door Refrigerator (Five temperature settings)
- Silverware Tray
- Knife Rack
- Microwave
- Oven

Packing for the weekend or an extended vacation, Hornet's storage systems are sure to meet your needs. Every Hornet has a minimum of 53.4 cubic feet of interior storage and 36 cubic feet of exterior space.

Travel Trailers



Fifth Wheels

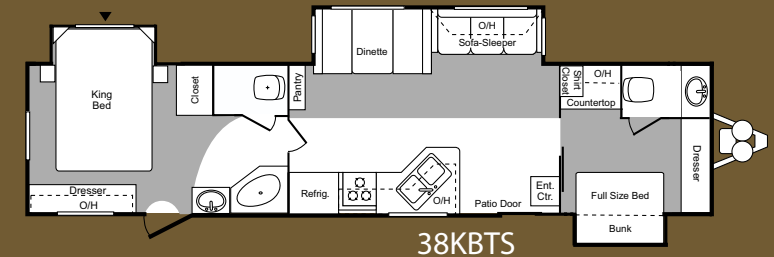
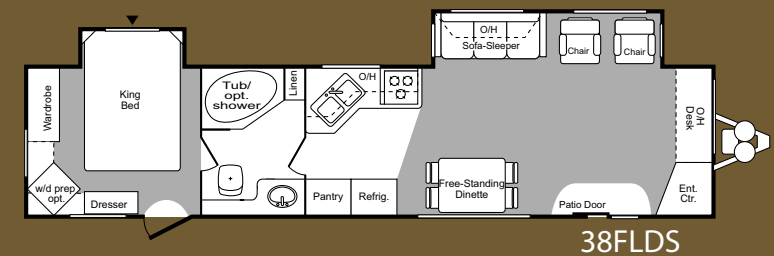
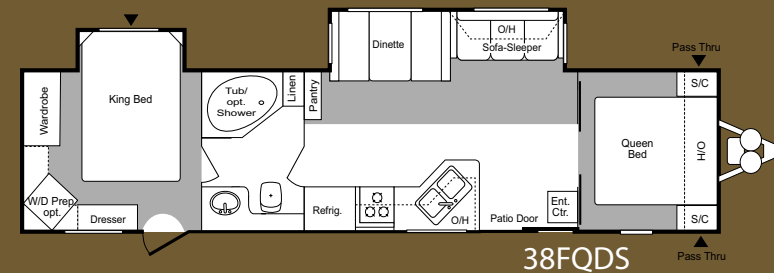
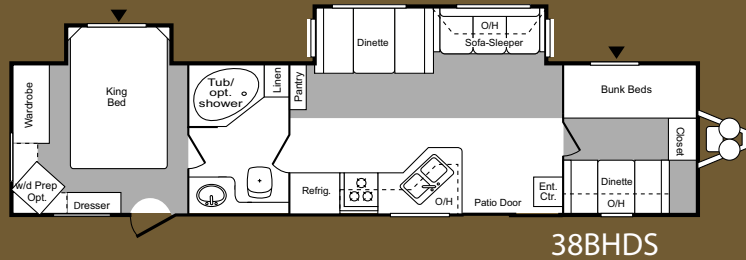


Travel Trailer and Fifth Wheel Specifications

ITEM	26RBS	27BHS	28RBDS	29RLS	30FKS	31RBDS	31RLDS	32BHDS	33FLDS	245RK	258BHS	295BH
Shipping Weight	6365	6450	7505	6880	6800	7700	7620	7840	7785	6705	7015	7800
Carrying Capacity	3635	3550	3145	3120	3200	3350	3480	3255	3470	3295	2985	3700
Hitch	815	755	865	785	1060	890	940	935	1095	1065	1460	1500
Exterior Length	30' 5"	30' 9"	32' 7"	32'	32' 5"	35' 5"	34' 6"	35' 8"	35' 6"	25' 11"	28' 2"	32' 4"
Exterior Width	8'	8'	8'	8'	8'	8'	8'	8'	8'	8'	8'	8'
Ext Height - Top of A/C	11'	11'	11' 2"	11'	11'	11' 2"	11' 2"	11' 2"	11' 2"	11' 8"	11' 8"	11' 8"
Fresh Water Capacity	45	45	45	45	45	45	45	45	45	45	45	45
Waste Water Capacity	38	38	38	38	38	38	38	38	38	38	38	38
Grey Water Capacity	76	38	76	38	76	38	76	76	38	76	38	76
LPG Capacity (lb.)	60	60	60	60	60	60	60	60	60	60	60	60
Tire Size	225/75R 15D	225/75R 15D	225/75R 15D	225/75R 15D	225/75R 15D	225/75R 15D	225/75R 15D	225/75R 15D	225/75R 15D	225/75R 15D	225/75R 15D	225/75R 15D
Awning Length	16'	16'	18'	18'	18'	21'	18'	16'	21'	16'	18'	18'



Retreat



ITEM	38BHDS	38FLDS	38FQDS	38KBTS
Shipping Weight	8530	8565	8555	TBD
Carrying Capacity	2855	2855	2845	TBD
Hitch	1225	1260	1240	TBD
Exterior Length	39' 11"	39' 11"	39' 11"	TBD
Exterior Width	8'	8'	8'	TBD
Ext Height - Top of A/C	11' 2"	11' 2"	11' 2"	TBD
Fresh Water Capacity	45	45	45	TBD
Waste Water Capacity	38	38	38	TBD
Grey Water Capacity	38	38	38	TBD
LPG Capacity (lb.)	60	60	60	TBD
Tire Size	225/75R 15D	225/75R 15D	225/75R 15D	TBD
Awning Length	21'	21'	21'	TBD

▼ = Storage

* Shipping weights do not include options or fluids.

Hornet

by Keystone



2" Studded Walls
16" on Center

3/8" OSB
Roof Decking

"One Piece"
Rubber Roof

13,500 BTU Ducted A/C
w/ "Quick Cool"

Exterior
Stereo Speakers

A&E Color
Matching Awning

Rain Gutter
w/ Down Spouts

Black Framed
Tinted Safety
Glass Windows

Window
Corner Blocks

"Four Point"
Stabilizer Jacks

Radial Tires

Easy Lube
Axles

6 Gallon Gas/Electric
DSI Water Heater

Easy Lift Steps

Residential
Carpet

5/8" Seamless
Floor Decking

Lighted Pass
Thru Storage

**Radius Roof Trusses
w/ 16" Ducting**

R7 Insulation

**.024" Baked
Enamel Siding**

**Hurricane
Straps**

Hitch Light

**Diamond
Plate**

**Dual Battery
Tray**

**Twin 30 LBS
LP Bottles
w/ Auto Change Over**

**3/8" OSB
Roof Decking**

**Foam Core Insulated
Air Conditioner Ducts**

Walk On Roof

R7 Insulation

4-1/2" Crowned Roof

**Trusses are Cleated
on Both Sides**

**Double Trusses
at Openings**

**Darco Underbelly is
Wrapped and Secured
Over the Top of the Floor**

**One Piece I-Beam
Powder Coated Frame**

**"Space Saver" Heated
and Enclosed Fresh
Water Tank**

**Full Width
Outriggers**

**Enclosed A-Frame
at Both Ends**

**5/8" x 24' OSB Floor
Decking with a Limited
Lifetime Warranty**

Exterior

Walk on Roof
Ladder Backers
Powder Coated I-Beam Frame
Cambered Chassis
Enclosed A-Frame
Four Heavy Duty Stab Jacks
Easy Lube Axles
Full Length Outriggers
Dual Battery Rack
Two 30lbs Bottles with Cover and Auto Change Over
A&E Awning-Color Coordinated
Awning Protector
Heated and Enclosed Fresh Water
Fender Skirts
Diamond Plate
Exterior Speakers
Black Radius Window Frames
TV Antenna with Booster
Radio Antenna
Roof Vents
Cable Hook Up
GFI Electrical Outlets
Seamless One Piece Roof
Radius Skirting
Pass Thru Storage (Queen Bed)
Hose Storage in the Bumper
.024 Gauge Aluminum Siding
R-7 Insulation throughout
Rail Gutters with Down Spouts
Four Stage Slide Room Seals
Goosenecks Enclosed (FW)
Extended Hitch Pin (FW)
Electric Front Jacks (FW)
Roto-Cast Seamless Holding Tanks
12 Volt 55 Amp Converter
Hitch Light

Bath

Porcelain Toilet w/Foot Flush
Tub Surround
Shower Exhaust Fan
Large Medicine Cabinet
Robe and Towel Hooks

Interior

13'500 BTU Air Conditioner
True Sound Entertainment System (with AM/FM, CD, DVD, MP3 Jack)
Foam Core Insulated A/C Ducts
Wall Paper Border
30K BTU Furnace (30' and Under)
35K BTU Furnace (31' or Longer)
6 Gallon DSI Quick Recovery Water Heater with By-Pass Kit
Flex Pex Tubing w/10 Year Warranty
81" Interior Height
6' Ceilings in the Slide Rooms
Wall switches for the Lights
RG6 Cable (Cable and Satellite)
Lumbercore Cabinet Pre-Drilled and Screwed Stiles
Sculptured Valances with Lambrequins
Panoramic Dinette Window
Jack Knife Sofa-Standard
Mini Blinds
11 3/4" Deep Slide Room Cabinets

Bedroom

TV Shelf/Hook Up
King Slide Bedroom
Bedsread-Master Bedroom
Bed Storage with Air Shocks
Four Cabinets Above the Queen Bed
Master Bed-Innerspring Mattress
Reading Light

Safety

Safety Chains
Break Away Switch
Electric Brakes on all Wheels
Carbon Monoxide Detector
LP Detector
Smoke Detector
Fire Extinguisher
GFI Electrical Outlets
Tinted Safety Glass

Kitchen

12 Volt Shur Flo™ Water Pump
Knife Rack
Three all Wood Drawers
Silverware Divider
Holding Tank Monitor Panel
Oven
Range with Hi-Output Burner
6 cu ft Refrigerator (5 Settings)
Exhaust Fan with Light
Microwave
Reversible Dinette Cushions
Largest Residential Kitchen Sink
High Rise Kitchen Faucet
Waste Basket Storage
Wood Core Cabinet Stiles (Pre-Drilled and Hand Screwed)
Raised Panel Upper Cabinet Doors
Mortise and Tenon Door Joints
Raised Panel Upper Cabinet Doors
Overhead Cabinets Above the Sink
Sink Cover
Metal Drawer Guides
Counter top Extensions

Construction

Darco Wrapped Floor Secured on the Top of the Floor
5/8" Seamless Sub-Floor
Sub-Floor Limited Lifetime Warranty
2" Wall Studs 16" on Center
LVL Beam Over the Slide Rooms
2" x 6" Framing Around the Slide Room
4-1/2" Crowned Roof
Truss Cleats on Both Sides
Double Trussed at Openings
Hurricane Straps Throughout
Loomed Wiring
Radius Corner Blocks
Radius Storage Doors

Hornet Options

LCD TV
Exterior Shower
Spare Tire Carrier, Cover
Hide-a-Bed (N/A 245RK)
Garden Shower (Not All Models)
Patio Door w/Blinds (30FKS, 33FLDS)
Rear Ladder
Large 8 cu ft Two Door Refrigerator
Two Swivel Rockers (31RLDS)
Free Standing Dinette
15,000 BTU Air Conditioner

Retreat Exclusive Features

Swing Away Grab Handle
Raised Panel Refer Front
15,000 BTU Air Conditioner
Exterior Shower
Patio Door with Blinds
8 cu. ft. Two Door Refrigerator (With Five Settings)
Glass Garden Shower
Water Purifier

Retreat Options

Prep for a Second A/C (Master Bedroom)
50 Amp Service
Washer/Dryer Prep
Quad Bunks (38BHDS Only)
Stabilizer Jacks
Spare Tire, Cover and Carrier
Rear Ladder
10 Gallon Gas/Electric DSI Water Heater
Residential Refrigerator
Free Standing Dinette (38FLDS Standard)
Hide-a-Bed
LCD Television

All Features Not Available on all Models.

Your **Hornet** Dealer:

Hornet
by Keystone

2642 Hackberry Drive Goshen, Indiana 46526
(574) 535-2100 www.keystone-hornet.com

 **Keystone RV Company**

Member
RVIA
RECREATION VEHICLE
INDUSTRY ASSOCIATION

Product information is as accurate as possible as of the date of publication of this brochure. Features, floor plans, and specifications are subject to change without notice. Please also consult Keystone's web site at www.keystonerv.com for more current product information and specifications.
row Vehicle disclaimer. CAUTION: Owners of Keystone recreational vehicles are solely responsible for the selection and proper use of tow vehicles. All customers should consult with a motor vehicle manufacturer or their dealer concerning the purchase and use of suitable tow vehicles for Keystone products. Keystone disclaims any liability or damages suffered as a result of the selection, operation, use or misuse of a tow vehicle. KEYSTONE'S LIMITED WARRANTY DOES NOT COVER DAMAGE TO THE RECREATIONAL VEHICLE OR THE TOW VEHICLE AS A RESULT OF THE SELECTION, OPERATION, USE OR MISUSE OF THE TOW VEHICLE. January 2008.