

NEWMAR

**GRAND STAR**  
2008 MOTORHOME







## A Star Is Born

When faced with different choices in life—including which motorhome to choose for all your journeys—make your decision a grand one. The brand-new 2008 Grand Star is a unique motorhome that's all about choices and versatility—it's available as a gas or diesel model. And the Grand Star comes with a multitude of features and options you'd expect from a diesel but at a cost that's well within a comfortable gas price range. So now you can have it all. A motorhome equipped with all the appointments you could want—at a great value—and built with Newmar's dependability and high quality. Isn't life grand?





# Making Life on the Road a Grand Experience

The Grand Star lets you hit the road with everything you need for your travels. From a living area with a full wall slide to a living area with opposing slideouts, it offers plenty of room. The Grand Star also offers comfortable Flexsteel® furniture for lounging, an LCD television and DVD/VCR player for hours of entertainment and a kitchen filled with amenities for first-class cooking.

Shown in 3305 floorplan with Aquamarine Décor and Oak Cabinetry.



#### GRAND STAR KITCHEN

The Grand Star kitchen features stainless steel appliances, including a Dometic® refrigerator, a microwave oven and a three-burner recessed range, that let you prepare quality meals quickly and easily, wherever you go.



#### PULLOUT PANTRY

The pullout pantry provides easy access to items stored in the cupboard.



#### FRONT-ROW ENTERTAINMENT

In the living area, an overhead 26-inch LCD TV offers entertainment options for those onboard.



#### LIVING AREA

The setup and design for this Grand Star 3750 floorplan makes the kitchen and living room feel like two separate rooms.



#### YOUR VERY OWN CAFÉ

The round dinette table with two fixed chairs (and two folding chairs) sits between the entertainment center and a convenient storage hutch, providing a cozy place for eating meals or enjoying activities in the 3750 floorplan.



# Rest Softly, Sleep Soundly

After a long day of traveling, you deserve a haven where you can relax, unwind and get some much-needed rest. Which is just what the Grand Star's bedroom offers, with comforts such as a tufted mattress with quilted bedspread, shams and accent pillow or an optional luxurious pillowtop mattress. And storage underneath the bed means you can bring with you those belongings you just can't leave behind.



## BEDROOM AMENITIES

The bedroom features generous wardrobe cabinets and a 20-inch flatscreen color television that's ready to entertain.



## WARDROBE

The large wardrobe with sliding mirrored doors provides plenty of storage. A closet with shelves helps you keep your possessions organized.



## BATHROOM AMENITIES

In the lavatory, the shower features a stone-look finish that adds subtle touches of refinement.



## Behind the Wheel

The Grand Star offers all the comforts and conveniences a driver needs for commanding the road. An Ultraleather driver seat with six-way power adjustment. A tilt steering wheel. Cruise control. And a black-and-white rearview monitor system with audio for viewing your surroundings from the cockpit.





**ONE-PIECE WINDSHIELD**

In the front, the Grand Star badge is prominently displayed under the large, one-piece windshield, which provides an uninterrupted view of your surroundings.



**SPACIOUS PASS-THROUGH STORAGE**

Stow all your favorite travel gear—from either side of the coach—in this huge exterior pass-through compartment.



**NEWMAR CONSTRUCTION**

The 2008 Grand Star is unbeatable with its striking Full-Paint Masterpiece Finish™ and Diamond Shield Front Protective Film. Constructed with Newmar's high-quality craftsmanship, it has a roof R-value of 16 and sidewall and floor R-value ratings of 11.



#### CEILING: R-VALUE = 16

- a. BriteTEK™ Roof
- b. 9mm Wood Decking
- c. Fiberglass Batten Insulation
- d. A/C Ducting
- e. Aluminum Roof Truss
- f. Kraft Paper Vapor Barrier
- g. 5/8" Bead Foam
- h. 3/8" Panel
- i. Padded Vinyl Overlay

#### WALLS: R-VALUE = 11

- j. 3/8" Plywood Interior Wall
- k. 5/8" Bead Foam
- l. Kraft Paper Vapor Barrier
- m. Fiberglass Batten Insulation
- n. 3/8" Plywood Exterior Wall
- o. Composite One-piece Gelcoat Exterior Sidewall
- p. 16" On-center Aluminum Framing with 3 1/2" Header

#### FLOORING: R-VALUE = 11

- q. Carpet/Tile
- r. Carpet Padding
- s. 3/8" Floor Decking
- t. Fiberglass Batten Insulation
- u. 2" x 3" Wood Framing
- v. Polyethylene Moisture Barrier
- w. Aluminum Ducting

- 1. 13.5M Central Air Conditioners (2)
- 2. One-piece Bonded Windshield
- 3. Coated Aluminum Wheels
- 4. Double-pane Tinted Safety-glass Windows
- 5. Top-hinged Baggage Doors

#### 16" On-center Framing

Just like a fine site-built residential home, your Newmar home is framed 16 inches on center, which allows the best placement of outlets, switches and other components.

#### Sikaflex®

Used throughout Newmar construction, Sikaflex elastic adhesive is one of the strongest bonding agents on the market today. It also serves as a sealant against air and water. And it helps dampen both sound and vibration.

#### Protected C-channels

To keep the electrical wiring that runs through holes in the aluminum-frame C-channels from chafing, each hole is ringed with a rubber grommet.

#### Newmar Express Limited Warranty

Every Grand Star Motorhome is backed by Newmar's one-year limited warranty/unlimited miles. Ask your Newmar dealer for details.

#### Newmar Total Comfort™ Central Air Conditioning



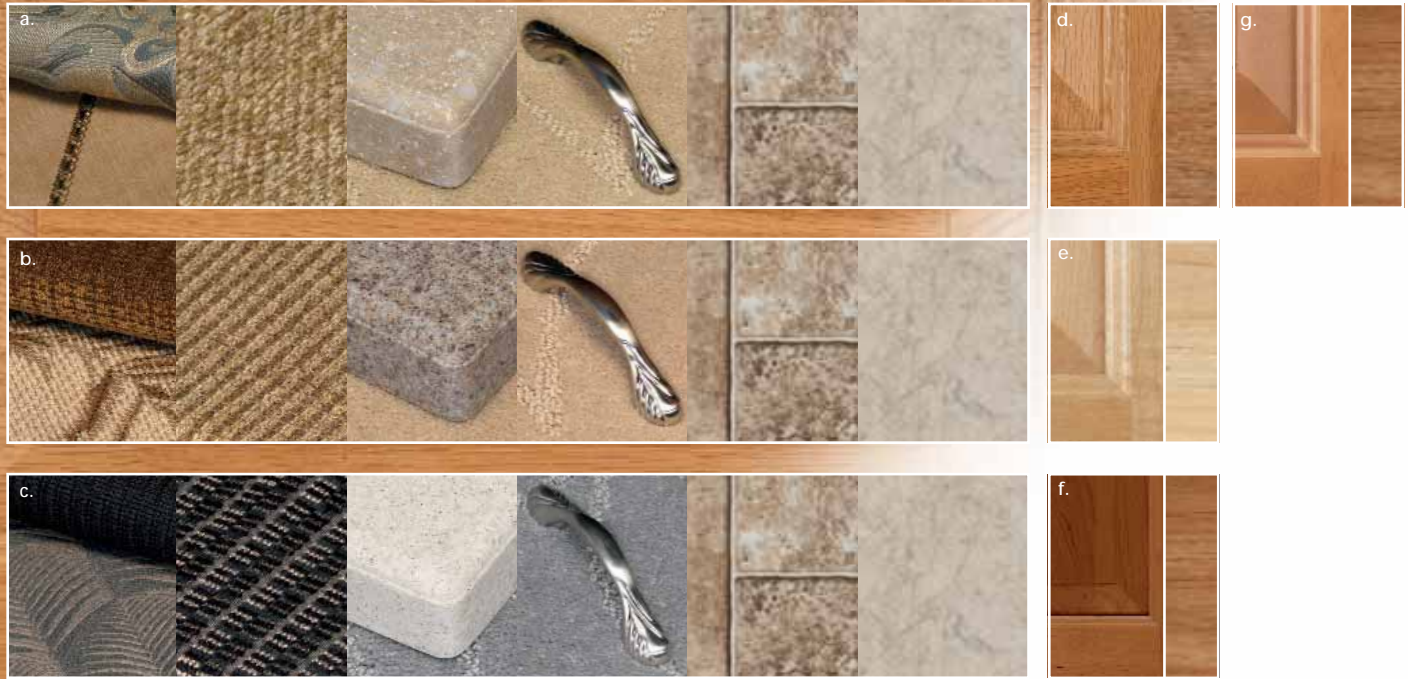
Experience RV air conditioning just like that found in site-built homes. Newmar's Total Comfort Central Air Conditioning is actually two separate, fully ducted systems: one to distribute incoming cool air, the other to quickly and effectively remove warm air from every living area.

#### The Limited Five-Year Structural Warranty

If any part of your Newmar recreational vehicle superstructure (which is the steel/aluminum structure of the sidewall, roof or frame) fails to perform properly within five years from the date of purchase, due to faulty workmanship or material supplied by Newmar, it will be repaired without charge for either parts or labor by Newmar. This structural warranty is available only to the original purchaser and is non-transferable.

# The Newmar Touch

We craft every motorhome with a special attention to detail, no matter how small or large. From the feel of the fabric, to the smooth touch of the custom-built cabinets, to our selection of color options. Every little detail and finishing touch contributes to the overall style and comfort of each motorhome. Whether you look from afar or study them up close, you'll notice the Newmar difference.



## WOOD FINISHES & INTERIORS

- a. Aquamarine Color Scheme with flooring options (left to right): vinyl flooring (standard), simulated marble and simulated plank (shown with matching cabinetry)
- b. Bay Gold Color Scheme with flooring options (left to right): vinyl flooring (standard), simulated marble and simulated plank (shown with matching cabinetry)
- c. Gray Dusk Color Scheme with flooring options (left to right): vinyl flooring (standard), simulated marble and simulated plank (shown with matching cabinetry)
- d. Tucson Oak Cabinetry, Standard
- e. Maple Cream Cabinetry, Optional
- f. Fall Spice Cabinetry, Optional
- g. Ginger Maple Hardwood Cabinetry, Optional



AQUAMARINE

BAY GOLD

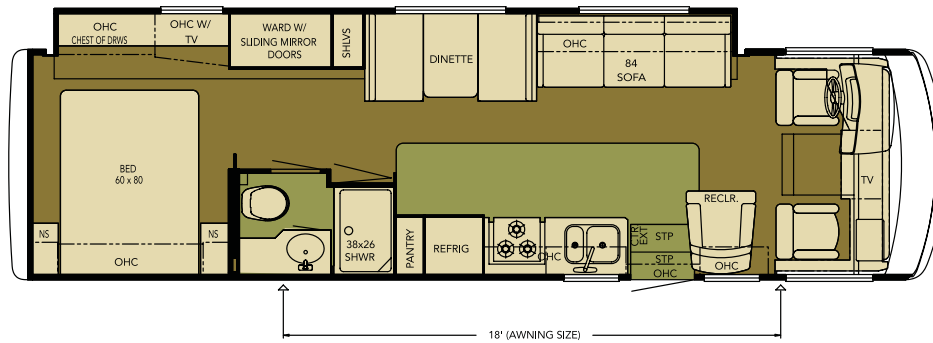
GRAY DUSK

Some features shown in our literature are optional. Colors and finishes are photographic representations. The actual materials may look different. Prices, specifications and floorplans are subject to change at Newmar's discretion, without prior notice or obligation. Please see your dealer for actual samples and specifications.

# Floorplans and Options

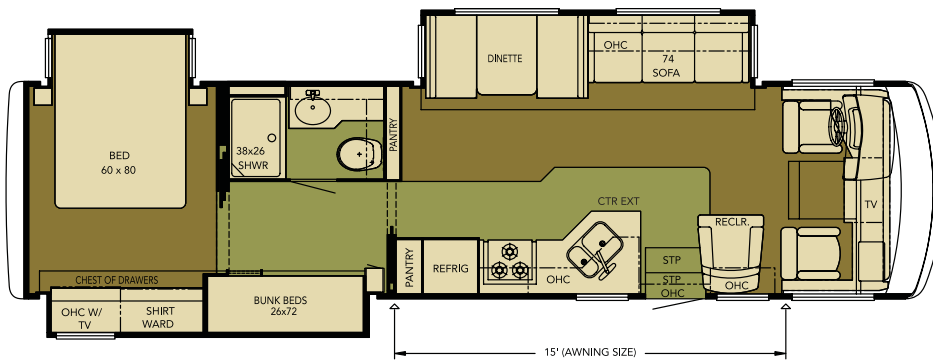
## GSCA 3305

Length: 33' 11"  
Width: 101.5"  
Option: K779\_5



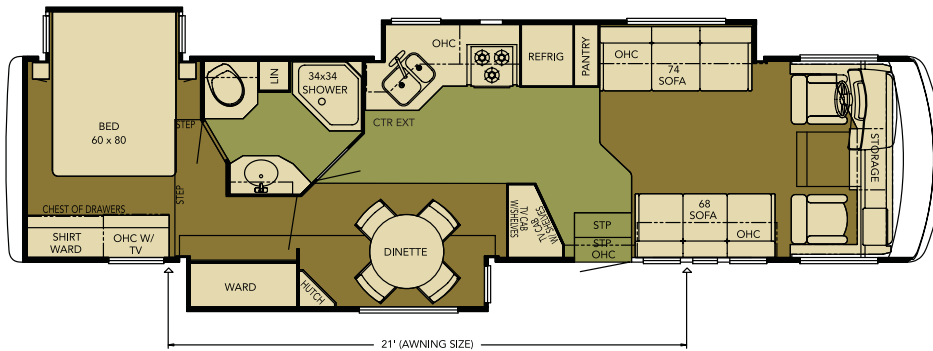
## GSCA 3510

Length: 35' 11"  
Width: 101.5"  
Options: K040\_2,  
K329\_3, K546,  
K779



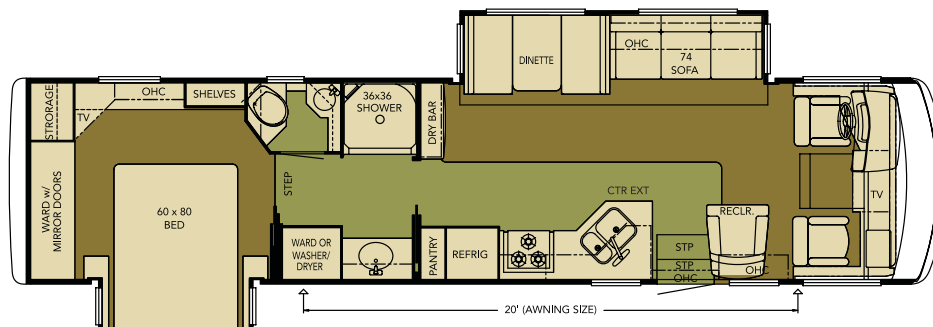
## GSCA 3750

Length: 37' 11"  
Width: 101.5"  
Options: K330, K779\_3



## GSCA 3751

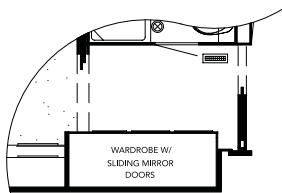
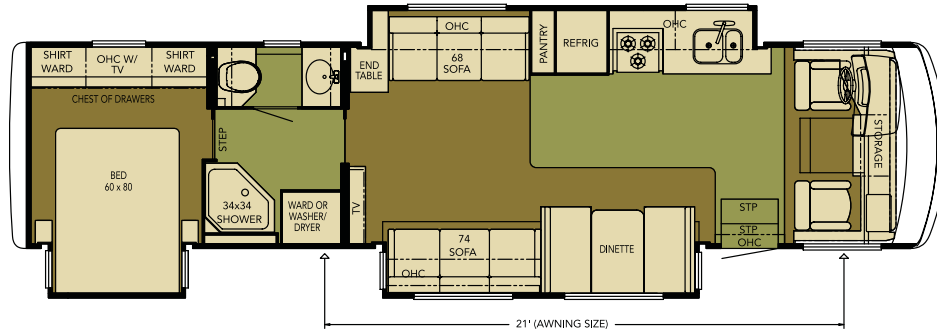
Length: 37' 11"  
Width: 101.5"  
Options: K546, K779



**GSCA 3752**

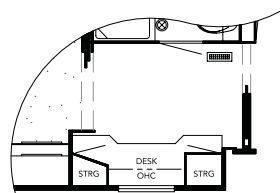
Length: 37' 11"  
Width: 101.5"

Options: K546\_5,  
K779\_3, K863,  
K865\_2



**K040\_2**

Wardrobe I/O  
Bunk Beds  
3510



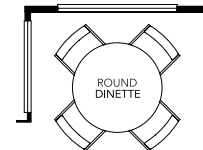
**K329\_3**

Desk I/O Bunk Beds  
3510



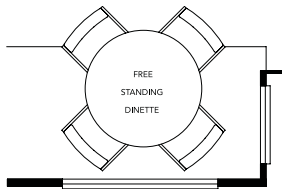
**K330**

Desk I/O 68" Sofa  
3750



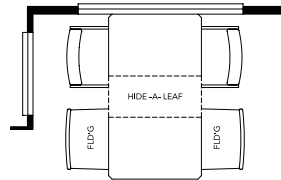
**K546**

Round Dinette  
3510, 3751



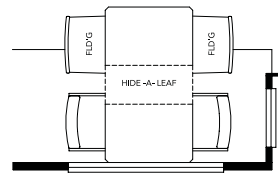
**K546\_5**

Round Dinette  
3752



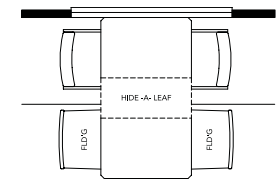
**K779**

Freestanding Dinette  
with 4 Folding Chairs  
3510, 3751



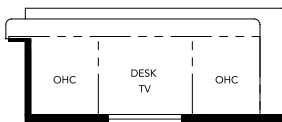
**K779\_3**

Freestanding Dinette  
I/O Booth Dinette  
3750, 3752



**K779\_5**

Freestanding Dinette  
with 4 Folding Chairs  
3305



**K863**

Desk with TV I/O Standard  
TV and Furniture  
3752



**K865\_2**

Entertainment Center with  
TV I/O Standard TV and Sofa  
3752

 Carpet     Vinyl Flooring

# Standard Features

## CHASSIS FEATURES

- Ford® F-53 22,000 lb. Chassis (33' Floorplan)
- Workhorse™ W-24 Chassis (35'–37' Floorplans)
- Electric Leveling Jacks with Automatic Control
- Cruise Control
- Tilt Steering Wheel
- Coated Aluminum Wheels

## AIR CONDITIONING & HEATING

- Two 13.5M Penguin™ Central Air Conditioners with Heat Pumps
- Propane Furnace with In-floor Ducted Heat
- Dash Heater and High-output Air Conditioner
- Propane Leak Detector

## APPLIANCES & ACCESSORIES

- Stainless Steel Three-burner Recessed Range with Glass Oven Door and Piezo Ignition
- Solid-surface Range Cover
- Dometic® 9 cu. ft. Refrigerator
- Stainless Steel-look Refrigerator Front
- Stainless Steel Microwave
- 10 gal. Gas/Electric Water Heater with Direct-spark Ignition
- 26" LCD TV in Living Area
- 20" LCD TV in Dinette Area\*
- 20" Flatscreen Color TV in Bedroom
- AM/FM Dash Radio with MP3 Adapter and CD Player
- DVD/VCR Player
- Rearview Monitor System, Black and White with Audio
- TV Antenna with Power Booster and Two Interior Jacks
- Satellite Prep
- Telephone Connection with Phone Jacks in Living and Dash Area
- Cable TV Connection with Rg6 Coax
- 10 Bc Fire Extinguisher, Carbon Monoxide and Smoke Detectors

## CABINETS & FURNITURE

- Oak Cabinetry with Raised-panel Cabinet Doors
- Hardwood Built-in Booth Dinette with Seat Belts
- Solid-surface Countertop in Kitchen with Undermounted Stainless Steel Sink and Flush Sink Covers
- Solid-surface Countertop in Bathroom with Porcelain Bowl\* (Acrylic on Certain Floorplans)
- Residential-style Full-extension Ball-bearing Drawer Guides
- Knife Hinges on Cabinet Doors
- Kitchen Countertop Extension\*
- Pull-out Pantry with Adjustable Shelves\*
- Flexsteel® Furniture
- Fabric Swivel Recliner\*
- Ultraleather Driver/Passenger Seats with Six-way Power Driver's Seat
- Lifts on Bed Top to Access Storage Area\*
- Tufted Mattress with Quilted Bedspread, Shams and Accent Pillows
- Molded Silverware Tray

## ELECTRICAL FEATURES

- 5.5 kW Cummins Onan® Marquis Generator with Remote Switch with Automatic Changeover
- 50 Amp Electrical Service with Flexible Cord
- Two 12 Volt House Batteries
- Battery Disconnect Switch
- 110 Volt Exterior Receptacle

- 5 Watt Solar Panel
- 55 Amp Converter
- Daytime Headlight System
- Emergency Start Switch
- Fluorescent Ceiling Lights in Living Area
- Incandescent Lighting in Bathroom, Bedroom and Under Overhead Cabinets
- Lighted Wardrobes
- Manually Operated Hold-to-Run Slideout Switch
- 12 Volt Auxiliary Receptacle on Dashboard
- Interior Courtesy Lights
- Energy Management System
- Exterior TV Jack
- ICC Light Flasher Switch
- Fog Lights

## EXTERIOR FEATURES

- Full-Paint Masterpiece Finish™ with Diamond Shield Front Protective Film
- One-piece Bonded Windshield
- Super Storage Below Rear Bedroom Floor\*
- Convex Exterior Mirrors with Remote Control, Defrost
- Entrance Door with Automatic Triple Step
- Lighted Exterior Storage Compartments with Cargo Liner, Controlled by Interior Master Switch
- 6,000 lb. Towing Hitch with Two Extra 14 Gauge Wires
- Acrylic Assist Handle at Entrance Door
- Undercoating
- Mud Flaps

## INTERIOR FEATURES

- Padded Vinyl Ceiling
- Day/Night Pleated Window Shades and Lambrequins
- Mini Blinds in Kitchen and Bathroom
- Vinyl Floor in Kitchen and Bathroom
- Deluxe Carpeting with High-density Padding in Living Room and Bedroom
- Flat-panel Interior Passage Doors
- Hardwood/Fabric Fascia on Living Area Slideout
- Interior Assist Handle at Main Entrance Door
- Shoe Storage Located in Entrance Step Compartment
- Wastebasket in Bathroom
- Vertical Drop-down Windshield-area Privacy Shade

## PLUMBING & BATH FEATURES

- Demand Water System with SHURflo® Pump
- Sewage Holding-tank Rinse
- Water Heater Bypass System
- Thetford™ Aqua Magic Plus China Stool with Wood Seat and Spray Attachment
- Towel Ladder, on Hinged Bathroom Door Only
- Tub/Shower Surround with Shower Door
- Monitor Panel
- Water Pump Switches Located in Bathroom and Kitchen
- Exterior Shower
- Water Filter for Entire Unit

## WINDOWS, AWNINGS & VENTS

- Double-pane Tinted Safety-glass Windows
- Fan-Tastic® Vent in Kitchen and Bathroom Area
- Skylight in Bathroom\*
- A&E® Weather Pro Power Side Awning
- A&E Slideout Awning Covers
- Cockpit Overhead Ventilation System

# Optional Features

## CHASSIS FEATURES

- Freightliner® FRED Chassis with 6.0 kW Cummins Onan Diesel Generator (35'–37' Floorplans)
- Workhorse™ W-22 Chassis (33' Floorplan)

## AIR CONDITIONING & HEATING

- Auxiliary Heater in Bedroom

## APPLIANCES & ACCESSORIES

- 30" Stainless Steel Convection Microwave Oven with Three-burner Cooktop
- Dometic 12 cu. ft. Refrigerator with Icemaker
- Norcold® 12 cu. ft. Four-door Refrigerator with Icemaker\*
- One-piece Washer/Dryer\*
- One-piece Washer/Dryer Prep\*
- Two-piece Washer/Dryer Prep\*
- Two-piece Washer/Dryer\*
- SIRIUS® Satellite Radio Capability (Does not include monthly subscription)
- Sony® Surround Sound System with AM/FM Radio, DVD Player and Subwoofer
- 10-disc CD Player
- Automatic Satellite Dish without Receiver
- Semi-automatic Satellite Dish without Receiver
- 10" Flip-down LCD TV/DVD Player with Headphones (at each Bunk Bed)
- Sideview Cameras
- Convenience Package: Hair Dryer, Two-way Radios and Electric Broom
- CB Antenna

## CABINETS & FURNITURE

- Fall Spice Cabinetry
- Maple Cream Cabinetry
- Ginger Maple Hardwood Cabinets
- Ultraleather Swivel Recliner\*
- Ultraleather Sofa\*
- Ultraleather Magic Bed Sofa\*
- Ultraleather Hide-a-Bed Sofa with Air Mattress\*
- Free-standing Dinette Table with Two Fixed and Two Folding Chairs\*
- Round Dinette Table with Two Fixed and Two Folding Chairs\*
- Wardrobe in Place of Bunks\*
- Desk in Place of Bunks\*
- Desk with Flatscreen TV
- Entertainment Center with Flatscreen TV
- Luxurious Pillowtop Mattress

## ELECTRICAL FEATURES

- 600 Watt Inverter for Living Area or Bedroom TV
- Solar Prep

## EXTERIOR FEATURES

- Rear Ladder

## INTERIOR FEATURES

- Simulated Plank Floor in Kitchen and Bathroom
- Simulated Marble Floor Tile in Kitchen and Bathroom
- Power-activated Sun Visors

## WINDOWS, AWNINGS & VENTS

- Bunk Windows
- Driver's Door with Power Window
- Rear Window (Single Pane)

\* CHECK WITH DEALERSHIP  
ON FLOORPLAN AVAILABILITY

## Floorplan Specifications

FLOORPLAN	APP. OVERALL LENGTH <sup>1</sup>	WIDTH	APP. OVERALL HEIGHT	INTERIOR WIDTH	INTERIOR HEIGHT	GREY	SEWAGE	WATER	PROPANE	FURNACE	WATER HEATER
GSCA 3305	33' 11"	101.5"	12' 10"	95.5"	84"	60 gal.	40 gal.	75 gal.	25 gal.	34,000 Btu	10 gal.
GSCA 3510	35' 11"	101.5"	12' 10"	95.5"	84"	60 gal.	40 gal.	75 gal.	25 gal.	40,000 Btu	10 gal.
GSCA 3750	37' 11"	101.5"	12' 10"	95.5"	84"	60 gal.	40 gal.	75 gal.	25 gal.	40,000 Btu	10 gal.
GSCA 3751	37' 11"	101.5"	12' 10"	95.5"	84"	60 gal.	40 gal.	75 gal.	25 gal.	40,000 Btu	10 gal.
GSCA 3752	37' 11"	101.5"	12' 10"	95.5"	84"	60 gal.	40 gal.	75 gal.	25 gal.	40,000 Btu	10 gal.

## Ford<sup>®</sup> Chassis Information

FLOORPLAN	ENGINE HP	AXLE RATIO	FUEL CAP.	WHEELBASE	FRONT GAWR <sup>2</sup>	REAR GAWR <sup>2</sup>	GVWR <sup>2</sup>	GCWR <sup>2</sup>	APP. UVW	APP. NCC
GSCA 3305	362	5.38	75 gal.	220"	7,500 lb.	14,500 lb.	22,000 lb.	26,000 lb.	18,350 lb.	3,650 lb.

## Freightliner<sup>®</sup> Chassis Information

FLOORPLAN	ENGINE HP	AXLE RATIO	FUEL CAP.	WHEELBASE	FRONT GAWR <sup>2</sup>	REAR GAWR <sup>2</sup>	GVWR <sup>2</sup>	GCWR <sup>2</sup>	APP. UVW	APP. NCC
GSCA 3510	340	4.78	80 gal.	228"	10,000 lb.	17,000 lb.	26,000 lb.	30,000 lb.	20,800 lb.	5,200 lb.
GSCA 3750	340	4.78	80 gal.	250"	10,000 lb.	17,000 lb.	26,000 lb.	30,000 lb.	21,729 lb.	4,271 lb.
GSCA 3751	340	4.78	80 gal.	246"	10,000 lb.	17,000 lb.	26,000 lb.	30,000 lb.	21,166 lb.	4,834 lb.
GSCA 3752	340	4.78	80 gal.	260"	10,000 lb.	17,000 lb.	26,000 lb.	30,000 lb.	21,799 lb.	4,201 lb.

## Workhorse<sup>™</sup> Chassis Information

FLOORPLAN	ENGINE HP	AXLE RATIO	FUEL CAP.	WHEELBASE	FRONT GAWR <sup>2</sup>	REAR GAWR <sup>2</sup>	GVWR <sup>2</sup>	GCWR <sup>2</sup>	APP. UVW	APP. NCC
GSCA 3305	340	5.86	75 gal.	220"	8,000 lb.	14,500 lb.	22,000 lb.	26,000 lb.	18,560 lb.	3,440 lb.
GSCA 3510	340	5.86	75 gal.	228"	9,000 lb.	15,500 lb.	24,000 lb.	30,000 lb.	19,365 lb.	4,635 lb.
GSCA 3750	340	5.86	75 gal.	250"	9,000 lb.	15,500 lb.	24,000 lb.	30,000 lb.	20,294 lb.	3,706 lb.
GSCA 3751	340	5.86	75 gal.	246"	9,000 lb.	15,500 lb.	24,000 lb.	30,000 lb.	19,731 lb.	4,269 lb.
GSCA 3752	340	5.86	75 gal.	260"	9,000 lb.	15,500 lb.	24,000 lb.	30,000 lb.	20,534 lb.	3,466 lb.

<sup>1</sup> Lengths do not include the rear ladder.

<sup>2</sup> Specifications are supplied by chassis manufacturer.

**GAWR:** Gross Axle Weight Rating is the maximum permissible weight for an axle.

**GVWR:** Gross Vehicle Weight Rating is the maximum permissible weight of a fully loaded motorhome.

**GCWR:** Gross Combination Weight Rating is the value specified by the manufacturer of the vehicle as the maximum allowable loaded weight of this motorhome and any towed trailer or towed vehicle.

**UVW:** Unloaded Vehicle Weight is the weight of this motorhome as built at the factory with full fuel, engine oil and coolants. The UVW does not include cargo, fresh water, LP gas or dealer-installed accessories.

**NCC:** Net Carrying Capacity is the maximum weight of all occupants, including the driver, personal belongings, food, fresh water, waste water, LP gas, tools, tongue weight of towed vehicle, dealer-installed accessories, etc., that can be carried by the motorhome.





**GRAND STAR**   
2008 MOTORHOME

## When You Know the Difference

At Newmar, we do more than just manufacture RVs. We enhance the RV lifestyle for our customers—in everything we do. From the luxury and details we proudly build into our products, to providing responsive customer service and support. From developing industry-leading innovations, to staying loyal and true in our everyday business practices. These are our values; this is the Newmar difference. As we celebrate 40 years of high-quality Amish craftsmanship, we look forward to many more years of building products that exceed your highest expectations and deliver the durability and quality that sets us apart from everyone else.



NEWMAR CORPORATION • 355 N DELAWARE ST • PO BOX 30 • NAPPANEE IN 46550-0030  
574-773-7791 • FAX 574-773-2895 • [www.newmarcorp.com](http://www.newmarcorp.com)