

EVEREST

LUXURY ON THE ROAD TO ADVENTURE.



**Keystone RV
Company**

EVEREST

LUXURY LIVING

Everest makes a statement from the moment you walk in the door. Surrounded by elegant hand-crafted maple and endless residential features, there is a feeling of class and distinction. You realize that you are not just in another fifth wheel, but rather the pinnacle of luxury that can only be Everest. Best of all, relaxation and convenience are not just given lip service – They are “standard features”.





LUXURY LIVING

345S Shown in Mocha Mist Decor

RELAXATION

The Everest is spacious and beautiful with everything you need for restful comfort, but careful attention to every detail is what makes this RV home truly special. Residential quality furnishings that are covered in rich, elegant fabrics offer a “welcome” to every visitor. Your everyday enjoyment will be multiplied by features like 6’5” tall slide rooms, large panoramic windows, and an LCD television with DVD and surround sound. However you prefer to relax, Everest is sure to please.





RELAXATION

348R Shown in Royal Onyx Decor

CONVENIENCE

Everest strives to create an environment of convenience that maximizes your satisfaction.

For instance, durable Corian™ counter tops are easy to clean and paired with a residential undermount stainless steel sink. The “Sleep and Store” sofa provides useful storage with the added benefit of a comfortable air mattress for overnight guests. Even when you’re on the road to adventure, you can still enjoy the conveniences of home.





CONVENIENCE

344J Shown in Botanical Decor

SPECIAL FEATURES

WE KNOW TURNING RADIUS MATTERS



In response to customer demand, Everest is proud to introduce an all-new front fiberglass cap that improves turning radius over 30% compared to other fifth wheel brands. Utilizing the latest in Computer Aided Design technology, this advancement in turning radius was created without compromising aerodynamics, structural integrity, or styling. When combined with the convenience of Everest's "Hitch Assist" back-up mirror, you have the industry's most advanced front cap ever.



Industry Leading AERODYNAMICS

FUEL ECONOMY • SAFETY • CONVENIENCE



The Everest "Easy Tow" front fiberglass cap provides 18% better aerodynamics than many of today's leading fifth wheels. With its unique multi-radius shape, our engineers have created a front cap with one of the lowest Draft Coefficients of any fifth wheel made. The result is simple: "Easy Tow" provides improved fuel economy, increased stability, and a safe, enjoyable towing experience.

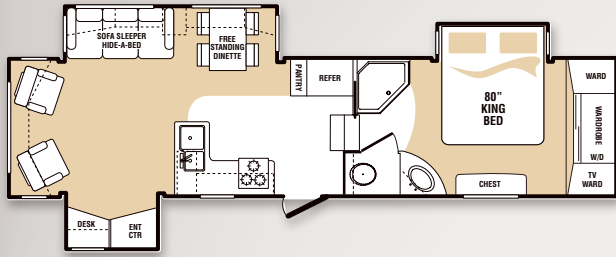
FLOORPLAN SPECIFICATIONS

MODEL	305T	320T	322R	330B	341B	344J	345S	348R	350S
Shipping Weight	11570	11015	10525	10110	11250 *	11155	11455	11350	11155
Carrying Capacity	2445	3355	3755	3290	3070 *	2835	2385	2685	2960
Hitch	2015	2370	2280	2460	2320 *	1990	1840	2035	2115
Exterior Length	35' 2"	34' 11"	34' 10"	34' 10"	37' 3"	37' 3"	37' 3"	36' 10"	37' 4"
Exterior Height	12' 8"	12' 8"	12' 8"	12' 8"	12' 8"	12' 8"	12' 8"	12' 8"	12' 8"

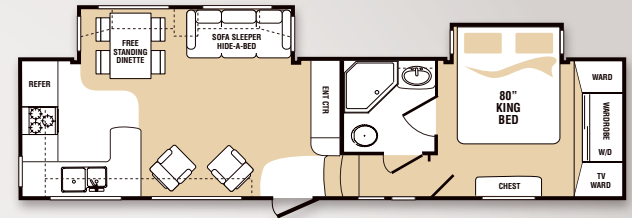
"Conveniences like a king bed and a place for my coffee pot were just two of the unique features that were important to us. We love our Everest!" — George and Judy, New York

FLOORPLANS

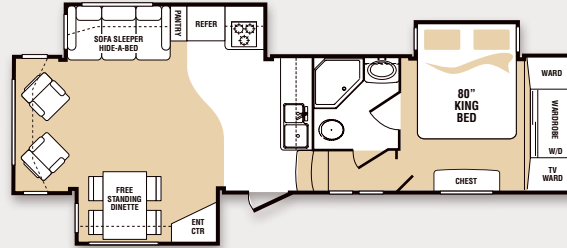
305T



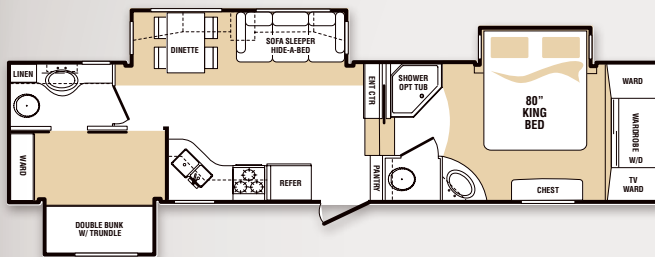
322R



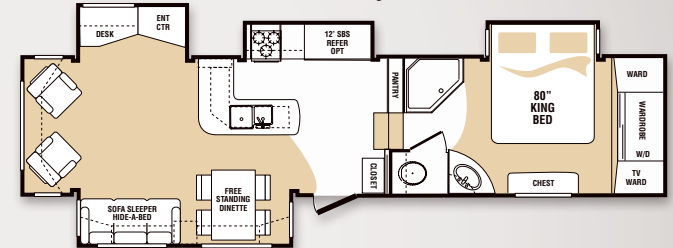
320T



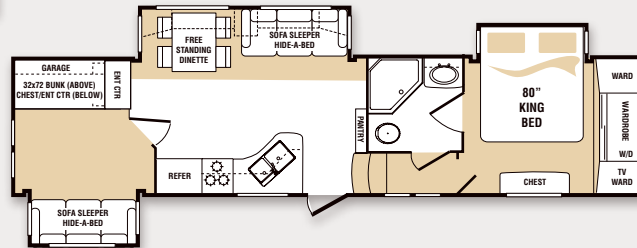
330B



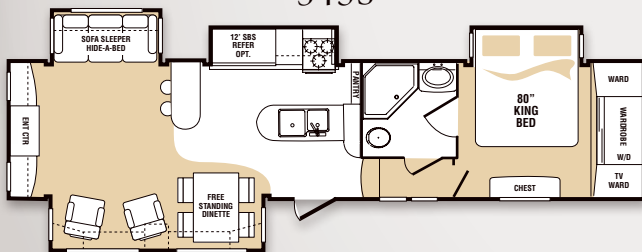
344J



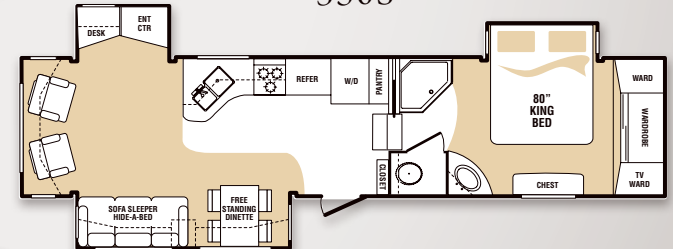
341B



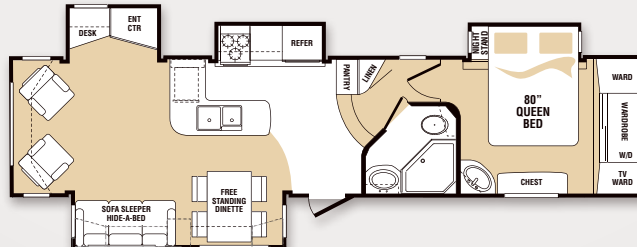
345S



350S



348R



"After looking for several years, we found the Everest to be just the unit we were looking for. It was well engineered throughout." — Tim & Jean, Ohio

STANDARDS & OPTIONS

EXTERIOR FEATURES

- 01 Everest-sized pass-thru storage with anti-skid flooring and 70" access door
- 02 "Easy Tow" hi-gloss fiberglass front cap featuring:
 - 30% more turning radius
 - 18% better aerodynamics
 - "Hitch Assist" back-up mirror
 - Long lasting LCD hitch lights
- 03 Hi-gloss fiberglass rear cap
- 04 Reverse (back-up) lights
- 05 One-piece, polypropylene underbelly
- 06 "Thermashield 37" holding tank enclosure
- 07 Triple ducted, heated holding tanks
- 08 All-in-one "Waterworks" exterior utility center featuring:
 - "Easy Siphon" winterization system
 - Water heater by-pass
 - Enclosed low point drain shut-off valves
 - Heat vent for cold weather protection
 - Black tank flush
 - Soap dispenser
- 09 16" E-load radial tires with 8 lug wheels
- 10 Heavy duty 6000 lb. axles
- 11 Easy-Lube axles
- 12 Dexter "EZ Flex" rubberized suspension system featuring:
 - Improved impact absorption
 - Improved axle equalization
 - Greasable "wet" bolts
 - Long lasting 1/2" thick shackles plates
 - Long lasting bronze bushings
- 13 "No Sweat" vented attic system
- 14 50 AMP service with detachable power cord
- 15 Hydraulic selector valves for slide-outs
- 16 Easy open triple steps
- 17 Extra large entrance door: 6'4" high and 30" wide
- 18 Power front landing jacks
- 19 Easy-to-access, front-facing snap jack pins

- 20 Gutters with rain spouts
- 21 Rear ladder
- 22 Outside entertainment package featuring:
 - Two exterior stereo speakers
 - Cable TV hook-up
 - 110V outlet
- 23 Tinted (80%) safety glass windows

INTERIOR FEATURES

- 01 Glazed maple, Endura cabinet doors with 10 year warranty
- 02 Glazed maple, Endura drawer fronts
- 03 Upgraded appliance package featuring:
 - Large 8' double door refrigerator
 - Convection microwave oven with vented range hood
 - Hi output 3 burner range with 22" oven
 - 12 gallon 110/12V water heater with DSI
 - 15,000 BTU ducted air conditioner with Quick Cool
 - 35,000 BTU furnace
- 04 Digital climate control center
- 05 Heavy duty, residential ball bearing drawer guides
- 06 20" deep drawers where applicable
- 07 Pre-drilled, screwed maple cabinetry with lumbercor styles
- 08 Solid "Bird's Eye" maple slide trim
- 09 Corian™ residential kitchen counter tops
- 10 Stainless steel kitchen sink with large, deep bowls
- 11 High rise, single lever kitchen faucet
- 12 Space-saver silverware tray
- 13 Message center (select models)
- 14 Refrigerator and stove storage drawers (select models)
- 15 Flush-mounted range cover
- 16 "Media Pro 5000" AM/FM stereo, CD and DVD player with surround sound
- 17 Optimum Lighting Package featuring:
 - Flush mounted halogen ceiling lights
 - Directional can lights at sofa with switch
 - 12V designer wall lights
 - 12V under-cabinet dinette light
 - Directional can lights above bed with switch
- 18 "Sleep and Store" air mattress sofa
- 19 4 high back dinette chairs with storage seats
- 20 Free standing dinette table with 2 expandable leaves and sliding tabletop with storage
- 21 Digital TV antenna with built-in amplifier
- 22 Dual cable and satellite ready TV hook-ups
- 23 Extra tall 6'5" main slide room height
- 24 Day/night shades
- 25 Ceiling fan with light kit
- 26 Create-A-Breeze roof vent in kitchen with push button operation
- 27 Telephone jack
- 28 LP leak detector
- 29 Monitor panel
- 30 38" garden shower with molded seat
- 31 One-piece, marble-finished shower surround
- 32 Translucent glass shower door and enclosure
- 33 Residential handheld massaging shower head
- 34 Skylight over shower
- 35 Solid-surface lavatory counter top with one-piece, molded sink
- 36 Porcelain foot-flush toilet
- 37 Single-level master bedroom suite (no step from bath to bed)
- 38 Residential king size bed (most models)
- 39 Innerspring pillow-top mattress
- 40 Convenient cell phone holder with charging station
- 41 Residential style headboard
- 42 Residential style chest of drawers in bedroom
- 43 Quilted bedspread and pillows

OPTIONS

- 01 Fireplace (most models)
- 02 Slide-out awnings
- 03 Electric rear stabilizer jacks
- 04 Wire and brace for 2nd A/C in bedroom
- 05 Dual A/C package
- 06 Create-a-Breeze roof vent - bedroom
- 07 Garden tub IPO garden shower
- 08 Generator prep
- 09 Hi-gloss fiberglass sidewalls
- 10 Recliner/glider – one or two
- 11 Euro-style reclining chair – one or two
- 12 Booth dinette (most models)
- 13 2 bar stools
- 14 Ottoman with storage
- 15 End table and table lamp
- 16 Central vacuum system
- 17 CSA construction
- 18 Dual pane windows
- 19 Extra large 12' SBS refrigerator (344J + 345S)

SUMMIT PACKAGE

Includes the following pre-selected items:

- 27" LCD television
- Electric awning
- 16" undercarriage spare tire kit
- Aluminum wheels
- Double insulation in roof and floor
- Washer/dryer prep
- Water purifier
- Exterior shower
- Security lights
- 2 solid surface sink covers
- CO (carbon monoxide) detector

"For quality, style, and comfort, nothing we've looked at gives you more 'bang-for-the-buck' than an Everest." — Jo and Steve, Michigan

WALL CONSTRUCTION (R-11)

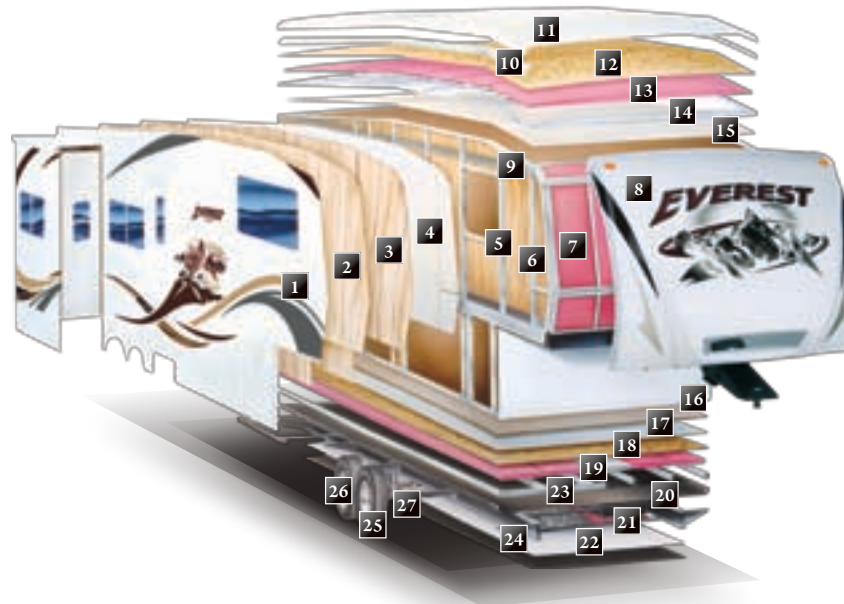
- 01 Gel-coated fiberglass exterior
- 02 1/8" Lauan wood backer
- 03 Second layer 1/8" lauan wood backer with staggered seams
- 04 Hi-density block foam insulation
- 05 Radius window corner blocks
- 06 2" Welded aluminum side wall studs
- 07 Fiberglass batten insulation
- 08 Molded, high-gloss fiberglass front and rear caps
- 09 Metal backing strips

ROOF CONSTRUCTION (R-15)*

- 10 Aluminum radius roof corner molding wrap
- 11 One-piece EPDM rubber roof with 12-year warranty
- 12 3/8" Fully walkable roof decking
- 13 Fiberglass batten insulation (double insulation optional)
- 14 5" Snow load galvanized steel roof trusses
- 15 1/8" Ceiling decking with vinyl protection

ZERO DEGREE RATED

With an impressive list of industry-leading construction advancements, Everest sets the bar for four season living.



*Insulation values are calculated utilizing the optional double insulation package.

FLOOR CONSTRUCTION (R-30)*

- 16 Residential grade carpet with stain protection
- 17 Residential grade carpet padding
- 18 5/8" Seamless wood floor decking with 25 year limited warranty
- 19 Fiberglass batten insulation (double insulation optional)
- 20 Darco wrap (main floor)
- 21 "Thermashield 37" holding tank insulation
- 22 One-piece, fluted polypropylene fully enclosed sub-floor
- 23 3" Floor joists on 12" - 16" centers

TIRES AND CHASSIS

- 24 10" Steel "powder coated" I-beam frame
- 25 16" E-load radial tires
- 26 EZ lube, 8-lug axles
- 27 Dexter EZ Flex rubberized suspension system



The EZ Flex rubberized suspension system will provide a safe and comfortable towing experience.

The "No Sweat" attic vents help to eliminate moisture and condensation during cold weather use.

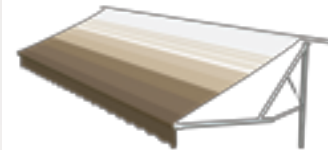


The all-in-one "Waterworks" area is a convenience normally reserved for luxury motorhomes.



The Everest-size pass thru storage area features a 70" access door, skid resistant flooring, and unmatched storage capacity.

Customers love the one-touch convenience of Everest's deluxe electric patio awning.



Because safety is a priority, Everest is standard with name brand, E-Load 16" radial tires attached to 8-lug wheels.



GO TO OUR WEB SITE WWW.KEYSTONE-EVEREST.COM FOR ZERO DEGREE TESTING INFORMATION AND RESULTS

"We have been extremely impressed with the quality of our Everest and would not hesitate to buy another one." —Bob and Nancy, Michigan

Love the Difference.

FOR MORE INFORMATION, CONTACT YOUR EVEREST DEALER:



2642 Hackberry Drive

Goshen, IN 46526

574-535-2100

www.keystone-everest.com

Product information is as accurate as possible as of the date of publication of this brochure. Features, floor plans, and specifications are subject to change without notice. Please also consult Keystone's web site at keystonerv.com for more current product information and specifications.

Tow Vehicle Disclaimer: CAUTION: Owners of Keystone recreational vehicles are solely responsible for the selection and proper use of tow vehicles. All customers should consult with a motor vehicle manufacturer or their dealer concerning the purchase and use of suitable tow vehicles for Keystone products. Keystone disclaims any liability or damages suffered as a result of the selection, operation, use or misuse of a tow vehicle. KEYSTONE'S LIMITED WARRANTY DOES NOT COVER DAMAGE TO THE RECREATIONAL VEHICLE OR THE TOW VEHICLE AS A RESULT OF THE SELECTION, OPERATION, USE OR MISUSE OF THE TOW VEHICLE. 10/07