

NEWMAR

Bay Star

2008 GAS MOTORHOME





Bay Star



N^ow Entering New Territory

Living life on the road shouldn't mean forgoing comfort for a reasonable price. With the 2008 Bay Star, you don't have to. Built with Newmar craftsmanship, the Bay Star offers value pricing. A host of amenities. And contemporary good looks. All allowing you easy—and stylish—entry into the world of Class A motorhome travel.





How Life on the Road was Meant to Be

The 2008 Bay Star was designed for adventure. A spacious cockpit, a welcoming living area and an efficient kitchen are equipped with an array of features sure to enhance any journey.

Shown in 3202 floorplan with Aspen Green Décor and Oak Cabinetry.


YOUR VERY OWN CAFÉ

The Bay Star booth dinette provides a cozy area for eating meals or enjoying other activities.


ROOM FOR EVERYONE

When it's time for bed, the booth dinette and standard Flexsteel® sofa both convert into extra sleeping accommodations.


FRONT-ROW ENTERTAINMENT

In the overhead cabinet, a 24-inch flatscreen color TV offers entertainment options for those onboard.


YOUR BAY STAR KITCHEN

The Bay Star kitchen isn't just beautiful—it's functional, too. Plenty of cabinet space allows you to stock up on your favorites. And the easy-cleaning, laminate countertop with a flip-up extension gives you extra working space.


PULLOUT PANTRY

The pullout pantry provides easy access to items stored in the cupboard.


FIRST-CLASS COOKING

Built-in appliances, including a Norcold® eight-cubic-foot refrigerator, microwave oven and three-burner range, let you prepare quality meals quickly and easily, wherever you go.



R

elax. Sleep. Dream.

At the end of a long day, nothing is more inviting than the Bay Star bedroom. The queen bed with a sweeping fabric headboard and a tufted mattress decorated with a quilted bedspread, shams and accent pillow offers complete comfort for total relaxation.



BEDROOM AMENITIES

Generous cabinets include a wardrobe with mirrored doors to store your belongings.



OPTIONAL BEDROOM TELEVISION

When you're not quite ready for sleep, the optional 20-inch color television in the bedroom is ready to entertain.



BATHROOM AMENITIES

Thoughtful conveniences in the bathroom include laminate countertops and additional drawers in the vanity area for convenient storage.



The Scenic Route Never Looked so Good

When it's time to hit the road, you'll enjoy the Bay Star's cockpit, as it is filled with amenities to enhance your travels. The comforts of optional Ultraleather driver and passenger seats. A tilt steering wheel with cruise control buttons at your fingertips. And a rearview monitor system with audio offers convenient viewing.



Bay Star

2008 GAS MOTORHOME



ONE-PIECE WINDSHIELD

In the front, the new Bay Star badge is prominently displayed under the large, one-piece windshield, which provides an uninterrupted view of your surroundings.



SPACIOUS STORAGE

Stow all your favorite travel gear in this roomy exterior storage compartment, complete with interior lighting and a cargo liner.



NEWMAR CONSTRUCTION

The 2008 Bay Star is unbeatable with its striking Full-Paint Masterpiece Finish™ and Diamond Shield Front Protective Film. Constructed with Newmar's high-quality craftsmanship, it has a roof R-value of 16 and sidewall and floor R-value ratings of 11.



CEILING: R-VALUE = 16

- a. BriteTEK™ Roof
- b. 9mm Wood Decking
- c. Fiberglass Batten Insulation
- d. A/C Ducting
- e. Aluminum Roof Truss
- f. Kraft Paper Vapor Barrier
- g. ½" Bead Foam
- h. ¾" Panel
- i. Padded Vinyl Overlay

WALLS: R-VALUE = 11

- j. ¾" Plywood Interior Wall
- k. ½" Bead Foam
- l. Kraft Paper Vapor Barrier
- m. Fiberglass Batten Insulation
- n. ¾" Plywood Exterior Wall
- o. Composite One-piece Gelcoat Exterior Sidewall
- p. 16" On-center Aluminum Framing with 3½" Header

FLOORING: R-VALUE = 11

- q. Carpet/Tile
- r. Carpet Padding
- s. ¾" Floor Decking
- t. Fiberglass Batten Insulation
- u. 2" x 3" Wood Framing
- v. Polyethylene Moisture Barrier
- w. Aluminum Ducting

- 1. 13.5M Central Air Conditioner
- 2. One-piece Windshield
- 3. Stainless Steel Wheel Simulators
- 4. Tinted Safety-glass Windows
- 5. Top-Hinged Baggage Doors

16" On-center Framing

Just like a fine site-built residential home, your Newmar home is framed 16 inches on center, which allows the best placement of outlets, switches and other components.

Sikaflex®

Used throughout Newmar construction, Sikaflex elastic adhesive is one of the strongest bonding agents on the market today. It also serves as a sealant against air and water. And it helps dampen both sound and vibration.

Protected C-channels

To keep the electrical wiring that runs through holes in the aluminum-frame C-channels from chafing, each hole is ringed with a rubber grommet.

Newmar Express Limited Warranty

Every Bay Star Gas Motorhome is backed by Newmar's one-year limited warranty/unlimited miles. Ask your Newmar dealer for details.

Newmar Total Comfort™ Central Air Conditioning



Experience RV air conditioning just like that found in site-built homes. Newmar's Total Comfort Central Air Conditioning is actually two separate, fully ducted systems: one to distribute incoming cool air, the other to quickly and effectively remove warm air from every living area.

The Limited Five-Year Structural Warranty

If any part of your Newmar recreational vehicle superstructure (which is the steel/aluminum structure of the sidewall, roof or frame) fails to perform properly within five years, from the date of purchase, due to faulty workmanship or material supplied by Newmar, it will be repaired without charge for either parts or labor by Newmar. This structural warranty is available only to the original purchaser and is non-transferable.

The Newmar Touch

We craft every motorhome with a special attention to detail, no matter how small or large. From the feel of the fabric, to the smooth touch of the custom-built cabinets, to our selection of color options. Every little detail and finishing touch contributes to the overall style and comfort of each motorhome. Whether you look from afar or study them up close, you'll notice the Newmar difference.



WOOD FINISHES & INTERIORS

- a. Aspen Green Color Scheme with vinyl flooring
- b. Montego Blue Color Scheme with vinyl flooring
- c. Sunset Tan Color Scheme with vinyl flooring
- d. Tucson Oak Cabinetry, Standard
- e. Maple Cream Cabinetry, Optional

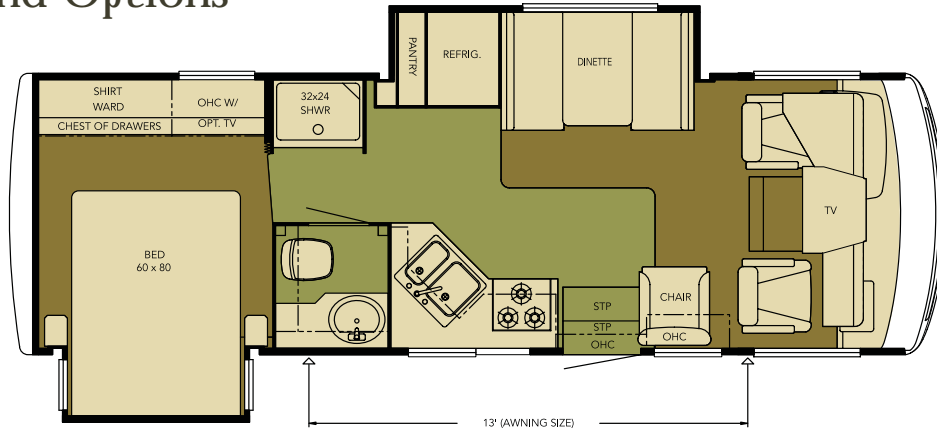

ASPEN GREEN
MONTEGO BLUE
SUNSET TAN

Some features shown in our literature are optional. Colors and finishes are photographic representations. The actual materials may look different. Prices, specifications and floorplans are subject to change at Newmar's discretion, without prior notice or obligation. Please see your dealer for actual samples and specifications.

Floorplans and Options

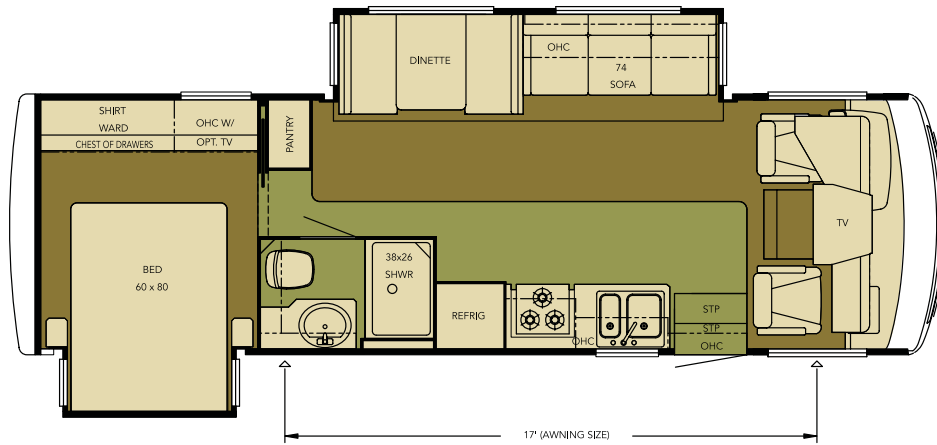
BSCA 2701

Length: 27' 9"
 Width: 101.5"
 Option: K779_7



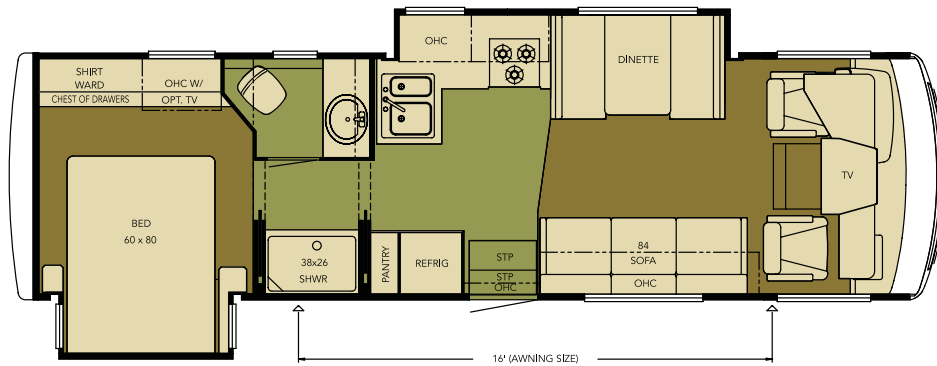
BSCA 2901

Length: 29' 9"
 Width: 101.5"
 Option: K779



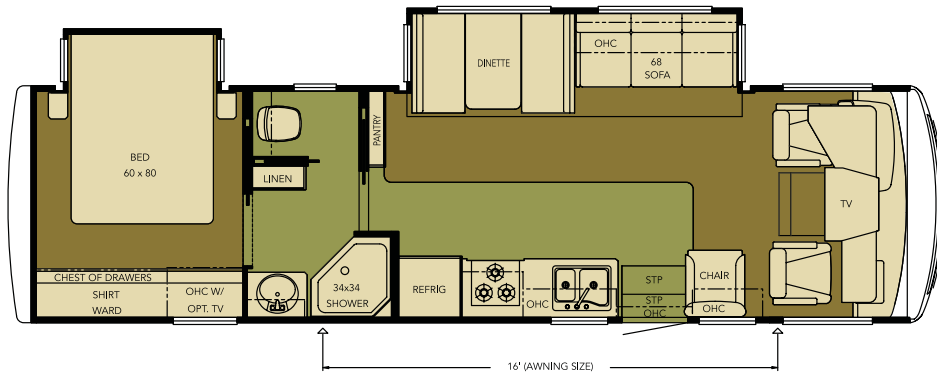
BSCA 3102

Length: 31' 6"
 Width: 101.5"
 Option: K779_7



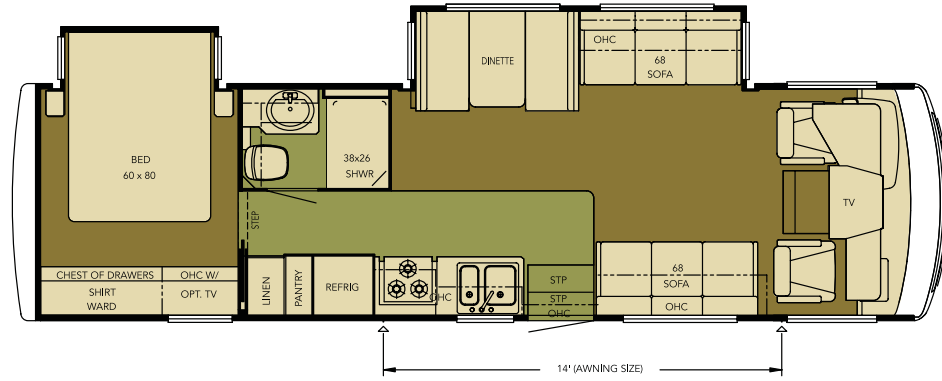
BSCA 3201

Length: 32' 10"
 Width: 101.5"
 Option: K779



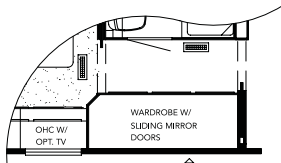
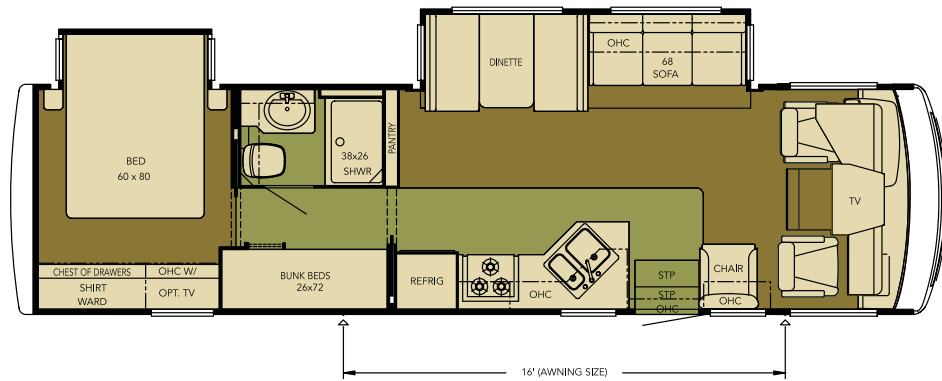
BSCA 3202

Length: 32' 9"
Width: 101.5"
Option: K779



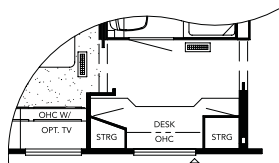
BSCA 3304

Length: 33' 10"
Width: 101.5"
Options: K040_1,
K329, K779



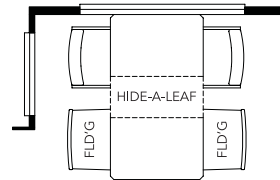
K040_1

Wardrobe ILO Bunk Beds
3304



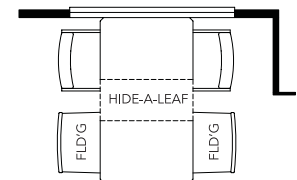
K329

Desk ILO Bunk Beds
3304



K779

Freestanding Dinette
with 4 Chairs
2901, 3201, 3202, 3304



K779_7

Freestanding Dinette
with 4 Chairs
2701, 3102

Carpet

Vinyl Flooring

Standard Features

CHASSIS FEATURES

- Ford® F-53 18,000 lb. Chassis (26'–29' floorplans)
- Ford F-53 20,500 lb. Chassis (30'–33' floorplans)
- Electric Leveling Jacks with Automatic Control
- Cruise Control
- Tilt Steering Wheel
- Stainless Steel Wheel Simulators

AIR CONDITIONING & HEATING

- 13.5M Brisk® Central Air Conditioner
- Propane Furnace with In-floor Ducted Heat
- Dash Heater and Air Conditioner
- Propane Leak Detector

APPLIANCES & ACCESSORIES

- Three-burner Range with Metal Oven Door and Piezo Ignition
- Bi-fold Range Cover
- Range Hood with Light and Fan
- Norcold® 8 cu. ft. Refrigerator
- Black Refrigerator Front Panel
- Microwave Oven
- 6 gal. Gas/Electric Water Heater with Electronic Ignition
- 24" Flatscreen TV in Living Area
- AM/FM Dash Radio with MP3 Adapter and CD Player
- Rearview Monitor System, Black and White with Audio
- TV Antenna with Power Booster and Two Interior Jacks
- Satellite Prep
- Telephone Connection with Phone Jack in Living Area
- Cable TV Connection with Rg6 Coax
- 10 Bc Fire Extinguisher, Carbon Monoxide and Smoke Detectors

CABINETS & FURNITURE

- Oak Raised-panel Cabinet Doors on Overhead Cabinets
- Booth Dinette with Seat Belts
- Laminate Countertop in Kitchen with ABS Sink and Sink Covers
- Laminate Countertop in Bathroom with ABS Bowl
- Residential-style Full-extension Ball-bearing Drawer Guides
- Kitchen Countertop Extension*
- Pull-out Pantry*
- Flexsteel® Furniture
- Fabric Driver/Passenger Seats
- Fabric Swivel Chair*
- Lifts on Bed Top to Access Storage Area
- Tufted Mattress with Quilted Bedspread, Shams and Accent Pillows

ELECTRICAL FEATURES

- 4.0 kW Cummins Onan® Generator with Remote Switch and Automatic Changeover
- 30 Amp Electrical Service with Flexible Cord
- Two 12 Volt House Batteries
- Battery Disconnect Switch
- 110 Volt Exterior Receptacle
- 5 Watt Solar Panel
- 45 Amp Converter
- Daytime Headlight System
- Emergency Start Switch
- Incandescent Lights Throughout
- Lighted Wardrobe
- Manually Operated Hold-to-Run Slideout Switch
- Exterior TV Jack
- 12 Volt Auxiliary Receptacle on Dashboard

EXTERIOR FEATURES

- Full-paint Masterpiece Finish™ with Diamond Shield Front Protective Film
- One-piece Windshield
- Convex Exterior Mirrors with Defrost
- Lighted Exterior Storage Compartments with Cargo Liner
- 5,000 lb. Towing Hitch with Two Extra 14 Gauge Wires
- Assist Handle at Entrance Door
- Undercoating
- Mud Flaps

INTERIOR FEATURES

- Padded Vinyl Ceiling
- Day/Night Pleated Window Shades and Lambrequins
- Mini Blinds in Kitchen and Bathroom
- Vinyl Floor in Kitchen and Bathroom
- Deluxe Carpeting with High-density Padding in Living Room and Bedroom
- Flat-panel Interior Passage Doors
- Interior Assist Handle at Main Entrance Door
- Shoe Storage Located in Entrance Step Compartment
- Wastebasket in Bathroom
- Dash Fans
- Wraparound Windshield Privacy Shade

PLUMBING & BATH FEATURES

- Demand Water System with SHURflo® Pump
- Sewage Holding-tank Rinse
- Water Heater Bypass System
- Thetford™ Aqua Magic Stool with Spray Attachment
- Towel Bars and Tissue Holder
- Towel Ladder, on Hinged Bathroom Door Only
- Tub/Shower Surround with Shower Door
- Exterior Shower
- Water Pump Switches in Bathroom and Kitchen

WINDOWS, AWNINGS & VENTS

- Tinted Safety-glass Windows
- Power Vent with Wall Switch in Bathroom
- Skylight in Bathroom*
- A&E® 8500 Side Awning
- Slideout Covers

Optional Features

OPTION PACKAGE

- Extra 13.5M Brisk® Central Air Conditioner, 5.5 Cummins Onan® Marquis Generator and 50 Amp Service with Energy Management System (30'–33' floorplans)

AIR CONDITIONING & HEATING

- 15.0M Penguin™ Heat Pump Central Air Conditioner (ILO 13.5 Brisk Air)
- Auxiliary Heater in Bedroom

APPLIANCES & ACCESSORIES

- Sony® Surround Sound System with AM/FM Radio, DVD Player and Subwoofer
- SIRIUS® Satellite Radio Capability (Does not include monthly subscription)
- 10-disc CD Player
- Flatscreen TV in Bedroom
- Automatic Satellite Dish without Receiver
- DVD/VCR Player
- CB Antenna

CABINETS & FURNITURE

- Maple Cream Cabinets
- Ultraleather Swivel Chair*
- Hidden-leaf Dinette Table with Four Chairs (Two Fixed, Two Folding)*
- Wardrobe in Place of Bunk Beds*
- Desk in Place of Bunk Beds*
- Ultraleather Driver and Passenger Seats

ELECTRICAL FEATURES

- 600 Watt Inverter for Living Area or Bedroom TV
- Solar Prep

EXTERIOR FEATURES

- Convex Exterior Mirrors with Defrost and Remote Control
- Rear Ladder

WINDOWS, AWNINGS & VENTS

- Double-pane, Tinted Safety-glass Windows
- Rear Window (Single Pane)
- Power Vent in Kitchen
- Bunk Windows*

* CHECK WITH DEALERSHIP
ON FLOORPLAN AVAILABILITY

Floorplan Specifications



Bay Star

2008 GAS MOTORHOME

FLOORPLAN	APP. OVERALL LENGTH ¹	WIDTH	APP. OVERALL HEIGHT	INTERIOR WIDTH	INTERIOR HEIGHT	GREY	SEWAGE	WATER	PROPANE	FURNACE	WATER HEATER
BSCA 2701	27' 9"	101.5"	12' 4"	95.5"	80"	60 gal.	40 gal.	75 gal.	25 gal.	30,000 Btu	6 gal.
BSCA 2901	29' 9"	101.5"	12' 4"	95.5"	80"	60 gal.	40 gal.	75 gal.	25 gal.	30,000 Btu	6 gal.
BSCA 3102	31' 6"	101.5"	12' 4"	95.5"	80"	60 gal.	40 gal.	75 gal.	25 gal.	30,000 Btu	6 gal.
BSCA 3201	32' 10"	101.5"	12' 4"	95.5"	80"	60 gal.	40 gal.	75 gal.	25 gal.	30,000 Btu	6 gal.
BSCA 3202	32' 9"	101.5"	12' 4"	95.5"	80"	60 gal.	40 gal.	75 gal.	25 gal.	30,000 Btu	6 gal.
BSCA 3304	33' 10"	101.5"	12' 4"	95.5"	80"	60 gal.	40 gal.	75 gal.	25 gal.	34,000 Btu	6 gal.

Ford® Chassis Information

FLOORPLAN	ENGINE HP	AXLE RATIO	FUEL CAP.	WHEELBASE	FRONT GAWR ²	REAR GAWR ²	GVWR ²	GCWR ²	APP. UVW	APP. NCC
BSCA 2701	362	5.38	75 gal.	172"	7,000 lb.	11,000 lb.	18,000 lb.	26,000 lb.	15,002 lb.	2,998 lb.
BSCA 2901	362	5.38	75 gal.	190"	7,000 lb.	11,000 lb.	18,000 lb.	26,000 lb.	15,625 lb.	2,375 lb.
BSCA 3102	362	5.38	75 gal.	200"	7,500 lb.	13,500 lb.	20,500 lb.	26,000 lb.	16,207 lb.	4,293 lb.
BSCA 3201	362	5.38	75 gal.	200"	7,500 lb.	13,500 lb.	20,500 lb.	26,000 lb.	16,440 lb.	4,060 lb.
BSCA 3202	362	5.38	75 gal.	200"	7,500 lb.	13,500 lb.	20,500 lb.	26,000 lb.	16,421 lb.	4,079 lb.
BSCA 3304	362	5.38	75 gal.	208"	7,500 lb.	13,500 lb.	20,500 lb.	26,000 lb.	16,877 lb.	3,623 lb.

¹ Lengths do not include the rear ladder.

² Specifications are supplied by chassis manufacturer.

GAWR: Gross Axle Weight Rating is the maximum permissible weight for an axle.

GVWR: Gross Vehicle Weight Rating is the maximum permissible weight of a fully loaded motorhome.

GCWR: Gross Combination Weight Rating is the value specified by the manufacturer of the vehicle as the maximum allowable loaded weight of this motorhome and any towed trailer or towed vehicle.

UVW: Unloaded Vehicle Weight is the weight of this motorhome as built at the factory with full fuel, engine oil and coolants. The UVW does not include cargo, fresh water, LP gas or dealer-installed accessories.

NCC: Net Carrying Capacity is the maximum weight of all occupants, including the driver, personal belongings, food, fresh water, waste water, LP gas, tools, tongue weight of towed vehicle, dealer-installed accessories, etc., that can be carried by the motorhome.





Bay Star

2008 GAS MOTORHOME

When You Know the Difference

At Newmar, we do more than just manufacture RVs. We enhance the RV lifestyle for our customers—in everything we do. From the luxury and details we proudly build into our products, to providing responsive customer service and support. From developing industry-leading innovations, to staying loyal and true in our everyday business practices. These are our values; this is the Newmar difference. As we celebrate 40 years of high-quality Amish craftsmanship, we look forward to many more years of building products that exceed your highest expectations and deliver the durability and quality that sets us apart from everyone else.



NEWMAR CORPORATION • 355 N DELAWARE ST • PO BOX 30 • NAPPANEE IN 46550-0030

574-773-7791 • FAX 574-773-2895 • www.newmarcorp.com