

ATLANTIS SE®  
2008



HOLIDAY RAMBLER®

*This is Living®*





Weights*	121	127	128	130	131
<b>Chevy Engine 6.0L</b>					
Wheel Base	139"	192"	191"	203"	216"
Gross Vehicle Weight Rating (Lbs.)	12,300	14,050	14,050	14,050	14,050
Gross Combined Weight Rating (Lbs.)	16,000	17,600	17,600	17,600	17,600
<b>Ford Engine 6.8L</b>					
Wheel Base	138"	191"	190"	202"	215"
Gross Vehicle Weight Rating (Lbs.)	11,500	14,500	14,500	14,500	14,500
Gross Combined Weight Rating (Lbs.)	18,500	20,000	20,000	20,000	20,000
<b>Measurements</b>					
Overall Length (Ford)	22' 2"	27' 4"	29' 2"	30' 5"	31' 3"
Overall Length (Chev)	22' 11"	28' 1"	29' 11"	31' 2"	32'
Overall Height - w/AC	10' 8"	10' 8"	10' 8"	10' 8"	10' 8"
Exterior Width	99"	99"	99"	99"	99"
Interior Width	95-1/2"	95-1/2"	95-1/2"	95-1/2"	95-1/2"
Interior Height	80"	80"	80"	80"	80"
Awning Size	12'	16'	14'	17'	16'
<b>Tank Capacities ** (Gal.)</b>					
Fuel Ford/Chevy	37/35	55/57	55/57	55/57	55/57
LPG	10	10	10	10	10
Fresh Water	29	29	29	28	29
Waste Water	21	25	25	25	25
Gray Water	21	27	21	27	21
Furnace BTU's	25,000	25,000	25,000	30,000	30,000

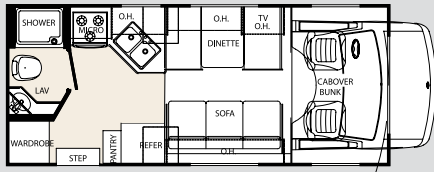
\* Weights may vary by options.

\*\* Tank manufacturer's listed water capacity (WC). Actual filled LP capacity is 80% of listing due to safety shut off required on tank.

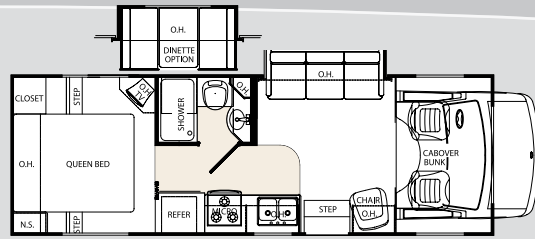
1 Towing capacity is limited by GCWR; your vehicle's towing capacity is the difference between the GCWR and the actual vehicle weight, including all water, fuel, passengers and cargo. Your towed vehicle should be equipped with auxiliary brakes if the weight of the towed vehicle exceeds 1,000 lbs. Consult your owner's manual for further towing information.  
 2 All tank capacities are estimated based upon calculations provided by the tank manufacturers and represent approximate capacities. The actual "usable capacity" may be greater or less than the estimated capacities based upon fabrication and installation of the tanks.  
 3 Actual filled LP capacity is 80% of listing due to safety shut-off required on tank.  
 The actual overall length of the recreational vehicle may differ from that

indicated in the brochure due to variances in the manufacturing process and/or installed components. The actual length may be greater or less than that indicated. Due to the large variety of options and floorplan arrangements available to our customers, actual weights for each unit can differ significantly. Monaco Coach provides a weight sticker on each unit we produce which includes that unit's tank capacities and approximate weight. Consult your local Monaco Coach dealer for unit availability and further information. The information printed in this brochure reflects product design, fabrication, and component parts at the date of printing. The manufacturer reserves the right, at any time, to make changes in product design or material or component specifications as its sole option, without notice. This includes the substitution of components of a different brand or trade name which will result in comparable performance. All information printed in this brochure is subject to change after the date of printing. Some features shown or mentioned in this brochure are optional and may only be available in selected floorplans. Photographs may show props or decorations that are not standard equipment on Monaco Coach models. Monaco Coach, the Monaco logo and its design, are registered trademarks. All other

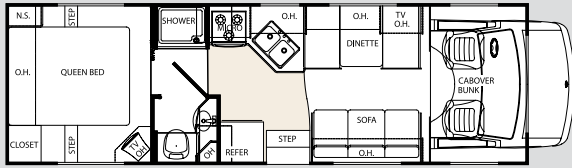
products and company names are trademarks and/or registered trademarks of their respective holders. While the color of the motorhome's exterior and the interior fabrics depicted in this sales brochure are fair and reasonable depictions, the colors depicted may not be an exact match of the actual colors because of the variances in photoprocessing and variances caused by inserting the photographs within the sales brochure. Due to product improvements, changes during the model year and/or transcription errors that may occur, information represented within this brochure may not be accurate at the time of your purchase. If certain information is significant to your purchasing decision, please confirm the information with your dealer prior to submitting your order. Component part and appliance manufacturers issue limited warranties covering those portions of the recreational vehicle not covered by the Limited Warranties issued by Monaco Coach Corporation. To learn which specific component parts and appliances are excluded from the Limited Warranties issued by Monaco Coach Corporation, please contact your selling dealership or Monaco Coach Corporation directly, or review the warranty packet inside the recreational vehicle.



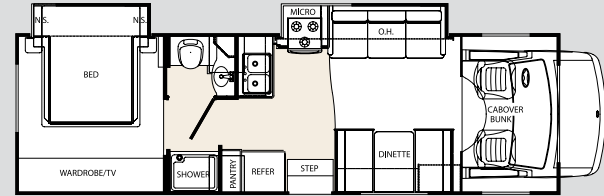
121



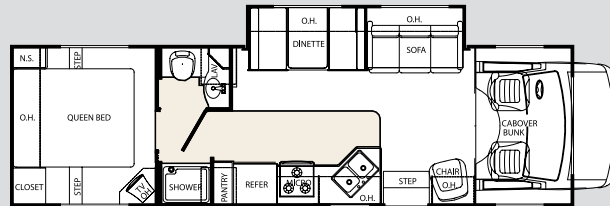
127



128



130



131

## STANDARDS & OPTIONS

### BODY CONSTRUCTION

- Fully Welded Tubular Aluminum Structures
- Fully Laminated Exterior w/High-Density Block Foam Insulation
- Pass-Through Storage Areas (N/A: 121, 130)

### BODY CONSTRUCTION OPTIONS

- Rear Ladder
- Heated Remote Breakaway Exterior Mirrors
- Electric Entrance Step
- Aluminum Running Boards
- Trailer Hitch with Wire
- Exterior Paint Package

### FORD CHASSIS / ENGINE (GAS) / SUSPENSION

- Ford E350 Chassis (121 Only)
- Ford E450 Chassis (N/A: 121)
- 6.8L Triton® V-10 Gasoline Engine with Sequential Electronic Fuel Injection (SEFI), 305 HP @ 4,250 RPM / 420 lb. - ft. Torque @ 3250 RPM
- 5-Speed TorqShift® Automatic Transmission with Overdrive
- 115 Amp Alternator - Gas Engine / 110 Amp with opt. Diesel Engine
- Rear Axle Ratio 4.10:1 (E350 Chassis) (121 Only)
- Rear Axle Ratio 4.56:1 (N/A: 121)
- Stainless Steel Wheel Covers
- Rear Multi-Leaf Spring Suspension with Stabilizer Bar
- ABS Brake System
- 5,000 lb. Hitch Receiver with Dual Connector 4-Pin or 7-Pin
- Dash Heating and Air Conditioner System with Defroster
- One 12V Chassis Battery
- Emergency Start Circuit

### FORD CHASSIS / OPTIONS

- Diesel Engine (N/A: 121)
- 6.0L Power Stroke® V8 Turbo Diesel, Direct Injection
- 235 HP @ 3,150 RPM / 440 lb.-ft. Torque @ 2,000 RPM
- Rear Axle Ratio 4.10:1 (E450 Diesel Chassis)
- Spare Tire
- CSA Approval
- Stainless Steel Wheel Inserts

### CHEVY CHASSIS / ENGINE / SUSPENSION

- Vortec™ 6.0L V8 Sequential Fuel Injection (SFI), 300 HP @ 4,400 RPM, 360 lb. - ft. Torque @ 4000 RPM

- 4-Speed Automatic, Heavy Duty Transmission, Electronically Controlled with Overdrive; Internal Transmission Oil Cooler
- 145 Amp Alternator
- Rear Axle Ratio 4.10:1
- Stainless Steel Wheel Covers
- Rear Multi-Leaf Spring Suspension with Stabilizer Bar
- ABS Brake System
- 5,000 lb. Hitch Receiver with Dual Connector 4-Pin or 7-Pin
- Dash Heating and Air Conditioner System with Defroster
- One 12V Chassis Battery
- Emergency Start Circuit

### CHEVY CHASSIS / OPTIONS

- Spare Tire
- Stainless Steel Wheel Inserts

### COCKPIT

- AM / FM / CD Radio
- Reclining Captain's Chairs

### COCKPIT OPTIONS

- Rear Vision System

### APPLIANCES AND ACCESSORIES

- Double-Door Refrigerator
- High Output 3-Burner Range Top
- Lighted Power Range Hood
- Satellite Dish Prep

### APPLIANCES AND ACCESSORIES OPTIONS

- 3-Burner Range w/ Oven
- Microwave
- Sink Covers (2)
- 14" Color TV - Living Rm.
- 14" Color TV - Bedroom
- Cabover Entertainment Center w/ 20" Color TV
- TV Antenna / Booster / Jack, Cable Ready
- DVD Video Package
- Exterior Entertainment Center, CD Player Radio with Two Speakers

### INTERIOR

- Newport Cherry Cabinetry
- Booth Dinette (N/A: 127)
- Windshield Privacy Curtain

### INTERIOR OPTIONS

- Decors: Honeycomb II, Tabasco

- Day / Night Shades
- Black Plexi-glass Refrigerator Insert
- Front Cabover Window (N/A with Cabover Entertainment Ctr.)

### FURNITURE

- Barrell Chair (127, 131 Only)
- Queen Bed with Innerspring Mattress
- Plush Sofa

### ELECTRICAL SYSTEMS AND LIGHTS

- 30 Amp 120V Distribution Panel
- Shore Line Power Cord
- Solid State 55 Amp Electronic 12V Power Converter
- Guardian 4.0 KW Generator
- 12 V Auxiliary Battery

### ELECTRICAL SYSTEMS AND LIGHTS OPTIONS

- Onan RV Microquiet 4.0 Kw Generator
- Emergency Start Switch with Battery Disconnect

### PLUMBING AND LP SYSTEMS

- 12V Water Pump
- City Water Hook-up
- Water Heater By-Pass Valve
- 6-Gallon Gas Water Heater
- Shower or Tub with Curtain

### PLUMBING AND LP SYSTEMS OPTIONS

- 6 Gallon Gas Water Heater with Elec. Ignition
- Glass Shower Door

### HEATING, VENTS AND AIR CONDITIONING

- Pre-Wire for Roof A/C
- 12V Power Roof Vent
- Furnace BTU's 25,000 (21, 127, 128) 30,000 (130, 131)

### HEATING, VENTS AND AIR CONDITIONING OPTIONS

- 13,500 BTU Air Conditioner
- Heat Pads for Holding Tanks
- Fantastic 12V Attic Fan with Rain Sensor

### WINDOWS, DOORS AND AWNINGS

- Tinted Radius Corner Windows
- Skylight in Bathroom
- Topper Slide-Out Awnings (N/A: 121, 128)

### WINDOWS, DOORS AND AWNINGS OPTIONS

- Patio Awning





ATLANTIS SE®  
2008

## BEING DIFFERENT MAKES ALL THE DIFFERENCE.

At Monaco Coach Corporation, we always strive to be the best. And that means thinking outside the box. Giving you more of what you want in an RV. Programs like Monaco Financial Services and 24/7 emergency technical support. No other manufacturer can match Monaco's offerings. No one even comes close. Why not discover the difference for yourself? Visit [www.monacodifferent.com](http://www.monacodifferent.com)

**"No other manufacturer can match Monaco's offerings.  
No one even comes close."**



KAY TOOLSON, CEO

### WARRANTIES

- 12 MONTH/24,000 MILES Basic Limited Warranty
- 2 YEAR Structural – See Dealer for Complete Coverage
- 3 YEAR/36,000 MILES – Chassis Warranty



**HOLIDAYRAMBLER.COM**

Log on to our website anytime, night or day. It's your link to everything Holiday Rambler, including product news and updates, club events, dealer and service center info and much more. Take it for a test drive today.

606 Nelson's Parkway Wakarusa, IN 46573  
[www.holidayrambler.com](http://www.holidayrambler.com) | 800-245-4778

**24/7**  
**ASSISTANCE**  
SALES • TECH • ROADSIDE

**WE'RE HERE. ANYTIME, EVERY TIME.**

- Reach us anytime — literally — via our live customer support line.
- Drive in to one of our 350 Service Centers.
- Enjoy the first year free when you enroll in our Owner Advantage Roadside Assistance Program.
- See where it all begins with a tour of one of our facilities in Indiana or Oregon. Call 1-800-650-7337 or 1-800-634-0855 to find out more.



**HOLIDAY RAMBLER®**

*This is Living®*



MONACO COACH CORPORATION



Monaco is traded on the New York Stock Exchange under the listing MNC.  
© 2007, Monaco Coach Corporation 01/08 9112ALUM Litho in USA.