

NEWMAR<sup>SM</sup> **ALLSTAR**  
2008 Diesel Motorhome



 **Comfort Drive™**  
STEERING





**ALL STAR**  
Cycle Hauler Edition







# CHOOSE YOUR ADVENTURE

An active, on-the-go lifestyle needs a motorhome that's functional, versatile and able to accommodate all of your favorite things. That's where the All Star comes in—a stylish motorhome with mid-engine chassis placement that provides more floorplan options. And two distinct model choices complement your extreme—or not-so-extreme—way of life: Toy Hauler and Cycle Hauler. Whatever you're up for, there's an All Star that's ready to take you on your next big adventure.





**ALLSTAR**  
2008 DIESEL MOTORHOME

Shown in 4155 floorplan with Fusion Décor and Platinum Gray Cabinetry.





#### **DRY BAR AND DINETTE**

The booth dinette and dry bar, which houses a 26-inch LCD TV, gives you an area in which to eat meals, be entertained or enjoy other activities.



#### **EXTRA SLEEPING**

The built-in booth dinette and the sofa can be converted quickly and easily into beds for extra sleeping accommodations.



#### **ULTRALEATHER FURNITURE**

The standard Ultraleather passenger seat and optional Ultraleather sofa offer comfortable seating.



#### **FRONT-ROW ENTERTAINMENT**

In the living area, an overhead 32-inch LCD TV offers entertainment options.

## **J**UST LIKE HOME

The spacious All Star living area is designed to provide comfort and enjoyment when you're out on the open road. Flexsteel® furniture allows you to recline while LCD TVs and a surround-sound home theater system let you indulge in some entertainment when you're ready for that much-needed break.



#### BATHROOM AMENITIES

In the lavatory, the shower features a stone-look finish that adds a subtle touch of refinement.



#### EXTERIOR STORAGE

Stow all your favorite travel gear—from either side of the coach—in this huge exterior pass-through compartment.



#### WASHER AND DRYER

The optional one-piece or two-piece washer and dryer will help you keep your clothing fresh and clean throughout your travels.



#### COMFORTABLE SEATING

The standard Flexsteel® or optional Ultraleather sofa gives passengers a cozy place for relaxation.



#### BUNK BEDS

The bunk beds each come with an overhead flip-down LCD TV and DVD player to give children more entertainment options.

## SUPER STORAGE

If you're the "more the merrier" type of traveler, the Super Storage option lets you bring everyone—and everything—with you on your trips. There are plenty of places to sleep, from the bedroom to the set of bunk beds to the booth dinette that converts into a bed. And the enormous exterior storage compartment easily accommodates everyone's belongings. The All Star has room for everybody.



**ALLSTAR**  
2008 DIESEL MOTORHOME







# TOY HAULER

You might spend your days playing hard, but you shouldn't have to "rough it" when it's time to come home. With this Class A toy-hauling diesel motorhome, you won't have to. It's equipped with a temperature-controlled garage for your toys...and separate living quarters with the comforts and features of home for you. So now you can play roughly and live nicely.



**ALLSTAR**  
2008 DIESEL MOTORHOME

ATV and dirt bikes provided by Frazier Motorsports.





#### **RESTFUL COMFORT**

The bedroom offers a queen bed with a tufted mattress, quilted bedspread, shams and accent pillow. In select floorplans, additional storage is available underneath the bed.



#### **FLIP-DOWN BEDROOM TV**

A standard 17" LCD TV drops from the ceiling, is ready to entertain and folds up when not in use.



#### **GARAGE CABINET**

In the garage, cabinets with recessed storage compartments accommodate more cargo and accessories.



#### **FUEL STATION**

The 24-gallon fuel station makes filling up your sports vehicles convenient and easy.





#### READY TO RIDE

The ramps in the spacious garage conveniently fold down when you're ready to take a ride on your motorcycle.



#### READY TO ROLL

When you're not using the ramps, they fold up.



#### THE CYCLE HAULER GARAGE

The garage has slideouts with ramps on both sides of the motorhome that allow quick exit and entry for two motorcycles.



#### FLIP-DOWN TABLES

Two flip-down worktables can be lowered when counter space is needed. A private entrance between the tables provides you with access to the bedroom from the garage.



#### VENTS AND FLOORING

Two vents in the garage can be opened to let in fresh air. The floor features a non-slip surface to help hold cargo in place.



#### A SECURE GARAGE

The garage allows you to haul, store and access your motorcycles and their accessories conveniently and safely.



**ALLSTAR**  
2008 DIESEL MOTORHOME





## CYCLE HAULER

Maybe you're a collector. Maybe you're an enthusiast. Or maybe you just like the feel of the wind on your face. Whatever your pleasure, the Cycle Hauler lets you store your motorcycles and sports bikes so you can bring them on your journeys. Its garage extends on both sides, so when you arrive at your destination, all you have to do is let down the ramps and drive off to explore your surroundings.





## READY TO ROLL

The All Star's cockpit comes with a host of standard features designed to enhance the driving experience. An Ultraleather seat with six-way power adjustment, power lumbar and ergo-flex arms and a tilt-and-telescope steering wheel enables you to find the most comfortable position. Comfort Drive™ steering lets you maneuver and drive with comfort, confidence and ease. And a rearview monitor system allows you to see what's behind you.



**ALLSTAR**  
2008 DIESEL MOTORHOME



### EXTERIOR STORAGE

Side-hinged swing-out doors give you easy access to the outside storage, as do the optional slideout trays (only available with Bedroom Suite/Super Storage Option).



### EXTERIOR ENTERTAINMENT

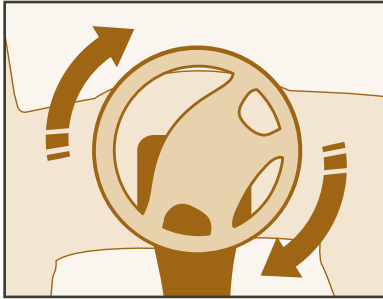
The optional external entertainment center features a 26-inch LCD TV, AM/FM radio and CD player to provide listening and viewing pleasure while enjoying the outdoors.





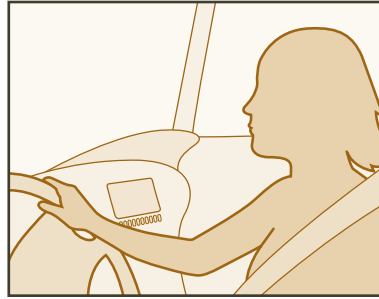
## Comfort Drive<sup>™</sup>

STEERING



### AUTO-CENTERING

Regardless of the position of the steering wheel, even after a hard turn, it always returns to center automatically.



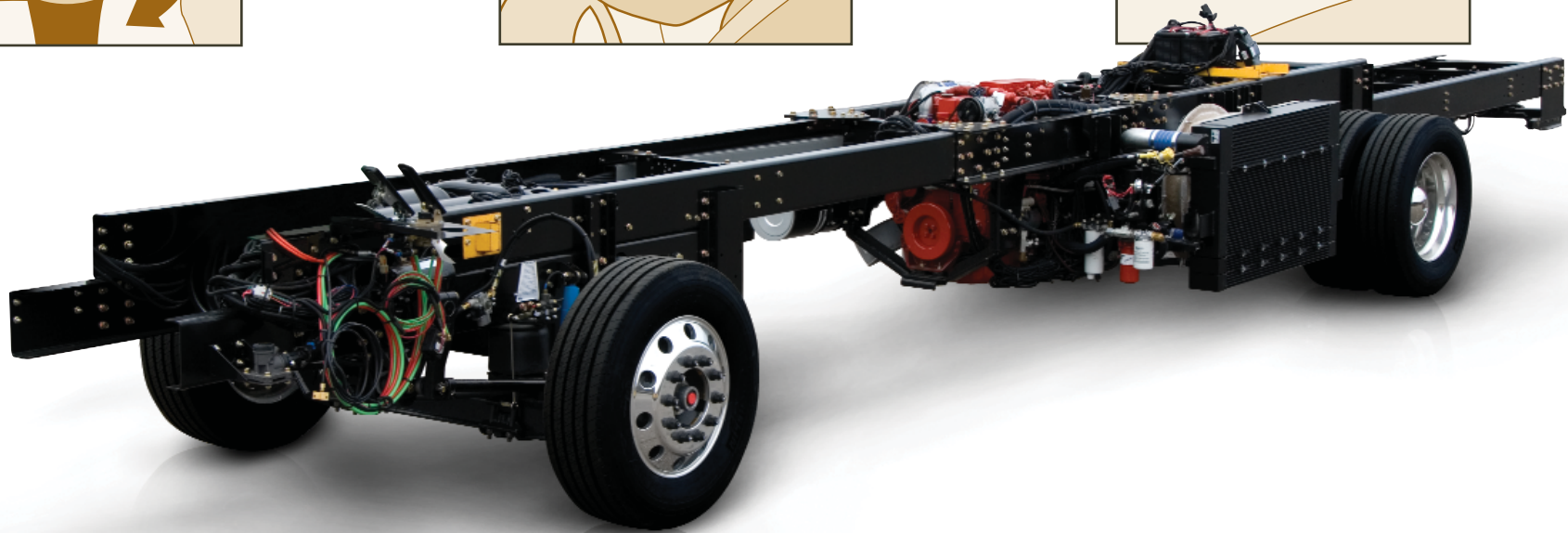
### EASY TURNING

The Comfort Drive steering system seriously reduces the effort required in handling your coach.



### BACKING UP

Comfort Drive makes backing into your campsite a much easier task through reduced effort and auto-centering.



## SPARTAN<sup>®</sup> MID-ENGINE CHASSIS WITH COMFORT DRIVE STEERING

Together, the revolutionary Spartan Mid-engine Diesel chassis and our exclusive Comfort Drive steering system provide a balanced, stable ride and excellent driving performance. The mid-engine chassis provides excellent resale value and carries a 36-month, 50,000-mile, no-deductible warranty, including roadside assistance. Comfort Drive steering reduces the driver's efforts in taking the wheel and controlling the coach in situations such as parking, cornering and backing up, automatically correcting steering to improve maneuverability.







#### CEILINGS: R-VALUE = 16

- a. BriteTEK™ Roof
- b. 9mm Wood Decking
- c. Fiberglass Batten Insulation
- d. A/C Ducting
- e. Aluminum Roof Truss
- f. Kraft Paper Vapor Barrier
- g. 3/8" Bead Foam
- h. 3/8" Panel
- i. Padded Vinyl Overlay

#### WALLS: R-VALUE = 11

- j. 3/8" Plywood Interior Wall
- k. 3/8" Bead Foam
- l. Kraft Paper Vapor Barrier
- m. Fiberglass Batten Insulation
- n. 3/8" Plywood Exterior Wall
- o. Composite One-piece Gelcoat Exterior Sidewall
- p. 16" On-center Aluminum Framing with 3 1/2" Header

#### FLOORING: R-VALUE = 16

- q. Carpet/Tile
- r. Carpet Padding
- s. 3/8" Floor Decking
- t. Fiberglass Batten Insulation
- u. 2" x 3" Wood Framing
- v. Polyethylene Moisture Barrier
- w. Foam Panels (Noise Protection)
- x. Aluminum Ducting

#### BASEMENT: R-VALUE = 4 (INCLUDED IN FLOOR R-VALUE)

- y. Cargo Liner
- z. 3/8" Floor Decking
- aa. 3/8" Luan Panel
- bb. 1 1/2" Bead Foam
- cc. Aluminum Sheeting (Prevents Distortion)

1. 13.5M or 15M Penguin™ Heat Pump Central Air Conditioners (2)
2. One-piece Windshield
3. Coated Aluminum Wheels
4. Double-pane Tinted Safety-glass Windows
5. Side-hinged Baggage Doors

#### NEWMAR TOTAL COMFORT™ CENTRAL AIR CONDITIONING

Experience RV air conditioning just like that found in site-built homes. Newmar's Total Comfort Central Air Conditioning is actually two separate, fully ducted systems: one to distribute incoming cool air, the other to quickly and effectively remove warm air from every living area.



#### PROTECTED C-CHANNELS

To keep the electrical wiring that runs through holes in the aluminum-frame C-channels from chafing, each hole is ringed with a rubber grommet.



#### SIKAFLEX®

Used throughout Newmar construction, Sikaflex® elastic adhesive is one of the strongest bonding agents on the market today. It also serves as a sealant against air and water. And it helps dampen both sound and vibration.

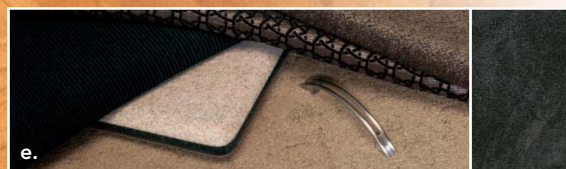
#### 16" ON-CENTER FRAMING

Just like a fine site-built residential home, your Newmar home is framed 16 inches on center, which allows the best placement of outlets, switches and other components.



**ALLSTAR**  
2008 DIESEL MOTORHOME





## THE NEWMAR TOUCH

We craft every motorhome with a special attention to detail, no matter how small or large. From the feel of the fabric, to the smooth touch of the custom-built cabinets, to our selection of color options. Every little detail and finishing touch contributes to the overall style and comfort of each motorhome. Whether you look from afar or study them up close, you'll notice the Newmar difference.

### WOOD FINISHES & INTERIORS

- a. Carbon Color Scheme with standard simulated marble flooring
- b. Chili Red Color Scheme with standard simulated marble flooring
- c. Fusion Color Scheme with optional ceramic tile flooring
- d. Paprika Color Scheme with optional ceramic tile flooring
- e. Toffee Color Scheme with optional ceramic tile flooring
- f. Topaz Color Scheme with standard simulated marble flooring

- g. Oak Cabinetry with Mission-style Doors, Standard
- h. Coastal Cherry Hardwood Cabinetry, Optional
- i. Fall Spice Cabinetry, Optional
- j. Ginger Maple Hardwood Cabinetry, Optional
- k. Platinum Gray Cabinetry, Optional

### FULL-PAINT MASTERPIECE FINISH™

Newmar's Full-Paint Masterpiece Finish raises the exterior beauty and durability of our motorhomes to a whole new level. This model year, we're offering our richest-looking graphics ever—to lend even more character and class. As industry leaders in applying full body paint to motorhome coaches, we at Newmar are pleased to offer the Full-Paint Masterpiece Finish as an All Star Diesel Motorhome standard.

### THE LIMITED FIVE-YEAR STRUCTURAL WARRANTY

If any part of your Newmar recreational vehicle superstructure (which is the steel/aluminum structure of the sidewall, roof or frame) fails to perform properly within five years from the date of purchase, due to faulty workmanship or material supplied by Newmar, it will be repaired without charge for either parts or labor by Newmar. This structural warranty is available only to the original purchaser and is non-transferable.

### NEWMAR EXPRESS LIMITED WARRANTY

Every All Star Diesel Motorhome is backed by Newmar's one-year limited warranty/unlimited miles. Ask your Newmar dealer for details.



CARBON

CHILI RED

FUSION

PAPRIKA

TOFFEE

TOPAZ

Some features shown in our literature are optional. Colors and finishes are photographic representations. The actual materials may look different. Prices, specifications and floorplans are subject to change at Newmar's discretion, without prior notice or obligation. Please see your dealer for actual samples and specifications.



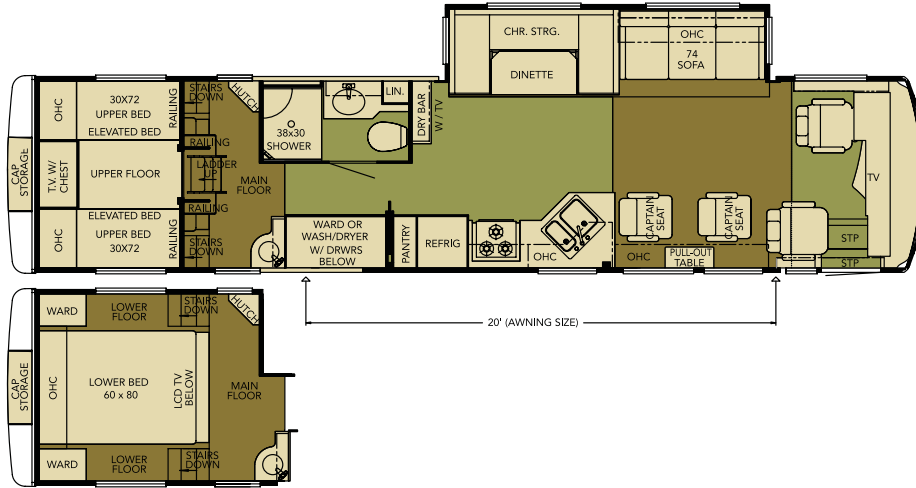
# FLOORPLANS AND OPTIONS

## ATME 3950

Length: 39' 3"

Width: 101.5"

Options: K016,  
K077, K274,  
K326, K543,

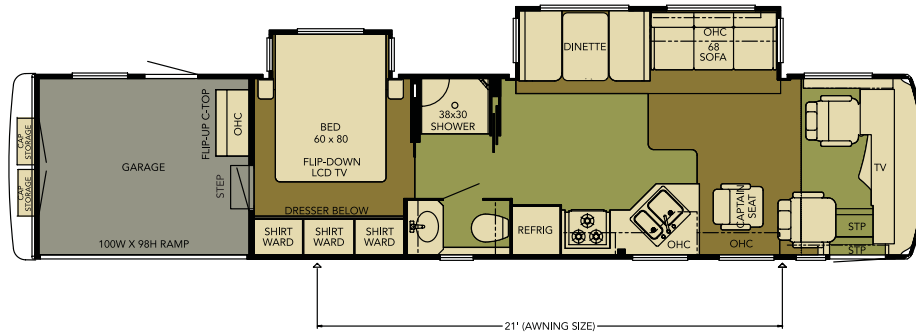


## ATME 4153

Length: 41' 8"

Width: 101.5"

Options: K540

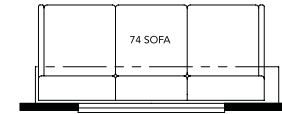
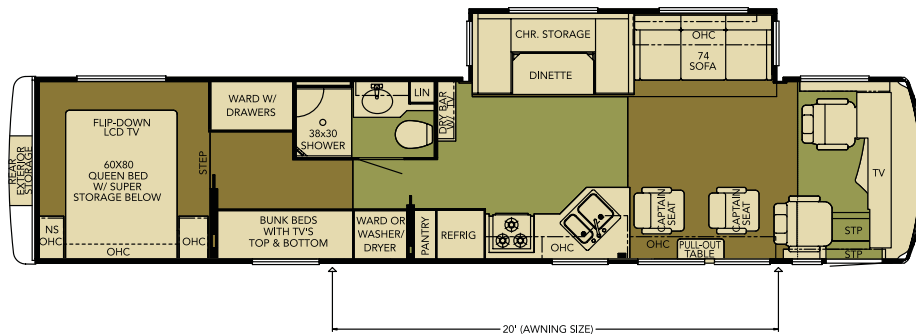


## ATME 4154

Length: 41' 3"

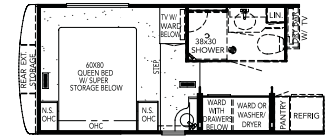
Width: 101.5"

Options: K016,  
K274, K326,  
K329, K543



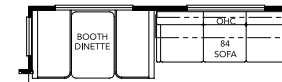
## K016

Sofa ILO Captain's Chairs  
3950, 4154



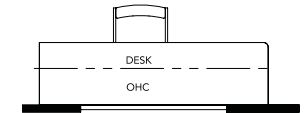
## K077

Bedroom Suite with Super  
Storage Below  
3950



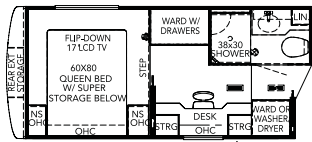
## K274

Booth Dinette with 84" Sofa  
3950, 4154



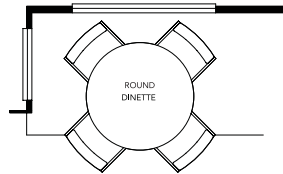
## K326

74" Desk ILO Captain's Chairs  
3950, 4154



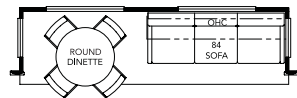
### K329

Desk ILO Bunk Beds  
4154



### K540

Round Dinette  
4153, 4155, 4156

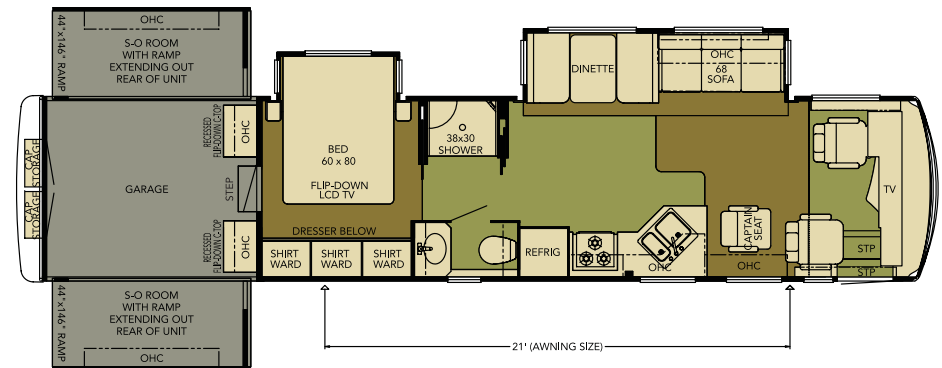


### K543

Round Dinette with 84" Sofa  
3950, 4154

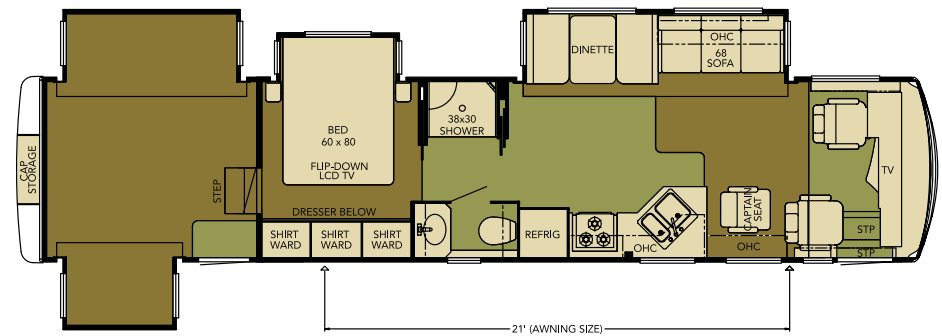
### ATME 4155

Length: 41' 8"  
Width: 101.5"  
Options: K540



### ATME 4156

Length: 41' 8"  
Width: 101.5"  
Options: K540



Carpet
  Simulated Marble Flooring
  Rubber Diamond Plate



## STANDARD FEATURES

### CHASSIS FEATURES

- Spartan® Mountain Master ME Chassis
- Cummins® ISC 360 hp (Family Floorplans)
- Cummins ISL 400 hp (Cycle Hauler, Toy Hauler and Garage Floorplans)
- Front Suspension I-Beam Axle
- Two-stage Compression Brake
- Coated Aluminum Wheels
- Electric Leveling Jacks with Automatic Control
- Cruise Control
- Comfort Drive™ Steering
- Manual Tilt and Telescope Steering Column
- Recessed Fuel Fills with Crossover to Fill from Either Side
- Back-up Alarm
- Anti-lock Braking System

### AIR CONDITIONING & HEATING

- Two 13.5M Penguin™ Heat Pump Air Conditioners
- Propane Furnace with In-floor Ducted Heat
- Dash Heater and High-output Air Conditioner
- Propane Leak Detector
- Wall-mounted Sensors for Heating and Air Conditioning

### APPLIANCES & ACCESSORIES

- 30" Convection Microwave Oven
- Three-burner Cooktop with Piezo Ignition
- Solid-surface Range Cover
- Norcold® 10 cu. ft. Refrigerator with Molded Contemporary Doors
- 10 gal. Gas/Electric Water Heater with Direct-spark Ignition
- One-piece Washer/Dryer Prep\*
- 32" LCD TV in Front Overhead Cabinet
- 26" LCD TV in Living Room Entertainment Center\*
- Color TV in Upper-bunk Area with 26" LCD TV in Lower Master Bedroom Area\*
- 17" LCD TV in Bedroom\*
- 10" Flip-down LCD TV/DVD and Headphones at Each Bunk Bed\*
- AM/FM Dash Radio with MP3 Adapter and CD Player
- Sony® Surround-sound Home Theater System with Single-disc DVD Player
- Rearview Monitor System
- Electronic Compass and Temperature Display in Dash
- TV Antenna with Power Booster and Two Interior Jacks
- TV Antenna "UP" Warning Signal
- Satellite Prep—Phone, TV Jack and Receptacle
- Exterior TV Jack

- Telephone Connection with Phone Jacks in Living and Dash Area
- Two Bedroom Radio Speakers with On/Off Switch
- Roof-mounted Air Horns
- 10 Bc Fire Extinguisher, Carbon Monoxide and Smoke Detectors
- Shop Vacuum (Garage Floorplans\*)

### CABINETS & FURNITURE

- Oak Cabinets with Mission-style Doors
- Booth Dinette with Seat Belts
- Solid-surface Countertop in Kitchen with Undermounted Acrylic Sink and Flush Sink Covers
- Solid-surface Countertop in Bathroom with Integrated Sink
- Adjustable Pullout Pantry Shelves\*
- Residential-style Full-extension Ball-bearing Drawer Guides
- Flexsteel® Furniture
- Two Folding Dinette Chairs
- Ultraleather Driver/Passenger Seats with Six-way Power, Power Lumbar, Ergo-Flex Arms
- Lifts on Bed Top to Access Storage Area\*
- Tufted Mattress with Quilted Bedspread, Shams and Accent Pillows

### ELECTRICAL FEATURES

- 8.0 kW Cummins Onan® Diesel Quiet Series Generator
- 50 Amp Electrical Service with Flexible Cord
- Four 6 Volt House Batteries
- Battery Disconnect Switch
- 110 Volt Exterior Receptacle
- 5 Watt Solar Panel
- 2000 Watt Inverter
- Emergency Start Switch
- Exterior Security Light on Door Side
- Midship Side Turn Signals
- Fluorescent Lights in Ceiling and Overhead Cabinets
- Slideout Information Voice Module
- Manually Operated Hold-to-Run Slideout Switch
- ICC Light Flasher Switch
- 12 Volt Auxiliary Receptacles on Dashboard
- Exterior TV Jack
- Interior Courtesy Lights

### EXTERIOR FEATURES

- Full-Paint Masterpiece Finish™ with Diamond Shield Front Protective Film
- One-piece Windshield
- Convex Exterior Mirrors with Remote Control, Defrost and Turn Signals
- Front Entrance Door with Automatic Double Step
- Power Flush Stepwell Cover at Front Entrance Door

- Automatic Double Step at Garage Side Door\*
- Lighted Exterior Storage Compartments with Cargo Liner Controlled by Interior Master Switch
- 8,000 lb. Towing Hitch with Two Extra 14 Gauge Wires
- Lighted Acrylic Assist Handle at Entrance Door
- Rear Protective Full-width Tow Guard
- Rear Ladder
- Undercoating
- Mud Flaps
- Water Spray Hose by Garage Door (Garage Floorplan\*)
- 24 gal. Fuel Dispenser (Side Ramp Garage Floorplan\*)

### INTERIOR FEATURES

- Padded Vinyl Ceiling
- Day/Night Pleated Window Shades and Lambrequins
- Mini Blinds in Kitchen and Bathroom
- Simulated Marble Floor in Kitchen, Bathroom and Entrance Area
- Deluxe Carpeting with High-density Padding in Living Room and Bedroom
- Flat-panel Interior Passage Doors
- Interior Assist Handle at Main Entrance Door
- Sun Shades on Driver and Passenger Side Windows
- Vertical Drop-down Windshield-area Privacy Shade
- Bed Spreads for Bunk Beds\*

### PLUMBING & BATH FEATURES

- Demand Water System with SHURflo® Pump
- Sewage Holding-tank Rinse
- Water Heater Bypass System
- Thetford™ Vacuum Flush Stool
- Towel Bars and Tissue Holder
- Fiberglass Shower with Glass Shower Door
- Monitor Panel
- Water Pump Switches Located in Bathroom, Kitchen and Exterior Near Gate Valves
- Exterior Shower
- Water Filter with Drink Dispenser at Kitchen Sink
- Water Filter for Entire Unit

### WINDOWS, AWNINGS & VENTS

- Double-pane Tinted Safety-glass Windows
- Fan-Tastic® Vent with Rain Sensor in Kitchen and Bathroom Areas
- Skylight in Bathroom\*
- A&E® 9000 Side Awning
- A&E Oasis Manual Front Entrance Door Awning
- A&E Slideout Awning Covers
- Cockpit Overhead Ventilation System

\*CHECK WITH DEALERSHIP ON FLOORPLAN AVAILABILITY.

## OPTIONAL FEATURES

### AIR CONDITIONING & HEATING

- Two 15M Penguin™ Heat Pump Central Air Conditioners
- 13.5M Penguin™ Air Conditioner with Heat Strip in Garage Area\*

### APPLIANCES & ACCESSORIES

- Norcold® 12 cu. ft. Four-door Refrigerator with Icemaker
- Icemaker Added to Refrigerator\*
- One-piece Washer/Dryer\*
- Two-piece Washer/Dryer\*
- SIRIUS® Satellite Radio Capability (Does not include monthly subscription)
- External Entertainment Center with 26" LCD TV AM/FM Radio and CD Player
- Automatic Satellite without Receiver
- In-motion Satellite without Receiver
- Sideview Cameras
- CB Radio with Antenna
- CB Antenna

### CABINETS & FURNITURE

- Fall Spice Cabinetry
- Coastal Cherry Hardwood Cabinets with Raised-panel Doors
- Ginger Maple Hardwood Cabinets with Raised-panel Doors
- Platinum Gray Cabinets with Custom Doors
- Raised-panel Cabinet Doors
- Booth Dinette with Seat Belts and Ultraleather Sofa
- Ultraleather Hide-a-Bed\*
- Ultraleather Hide-a-Bed with Air Mattress\*
- Ultraleather Sofa\*
- Ultraleather Easy Bed Sofa\*
- Ultraleather Magic Bed Sofa\*
- Round Hardwood Dinette Table with Four Fixed Chairs and Larger Dinette Window and Sofa\*
- Round Hardwood Dinette Table with Four Fixed Chairs and Larger Dinette Window\*
- Desk with Fixed Chair\*
- Desk in Place of Bunk Beds\*
- Wardrobe in Place of Lavatory\*

### EXTERIOR FEATURES

- Large Chrome Exterior Mirrors
- Hydraulic Leveling Jacks with Single Touch Control
- Large Storage Tray with Access from Either Side (Available Only with Bedroom Suite/Super Storage Option)



**ALLSTAR**  
2008 DIESEL MOTORHOME

#### INTERIOR FEATURES

- Upgraded Interior Package: Ceramic Tile Floors in Kitchen, Bath and Living Area, Polished Solid-surface Countertops and Furniture Tops (not dinette table or flipper table), Deluxe Interior Fabrics and Light Fixtures
- Bedroom Suite with 20" LCD TV and Super Storage Below\*
- Custom Area Rug Over Engine Cover
- Power-activated Sun Visors
- Simulated Marble Floor Throughout Living Area

#### PLUMBING & BATH FEATURES

- 110 Volt Heat Pads for Holding Tanks

#### CONSTRUCTION FEATURES

- Power Lock Arms

#### WINDOWS, AWNINGS & VENTS

- A&E® 9000 Bedroom and Slideout Window Awning
- A&E Weather Pro Side Awning and Oasis Power Front Entrance Door Awning

\*CHECK WITH DEALERSHIP ON FLOORPLAN AVAILABILITY.

## FLOORPLAN SPECIFICATIONS

FLOORPLAN	APP. OVERALL LENGTH <sup>1</sup>	WIDTH	APP. OVERALL HEIGHT	INTERIOR WIDTH	INTERIOR HEIGHT	GREY	SEWAGE	WATER	PROPANE	FURNACE	WATER HEATER
ATME 3950	39' 3"	101.5"	12' 9"	95.5"	84"	65 gal.	45 gal.	105 gal.	30 gal.	42,000 Btu	10 gal.
ATME 4153	41' 8"	101.5"	12' 9"	95.5"	84"	65 gal.	45 gal.	105 gal.	30 gal.	35,000 Btu	10 gal.
ATME 4154	41' 3"	101.5"	12' 9"	95.5"	84"	65 gal.	45 gal.	105 gal.	30 gal.	42,000 Btu	10 gal.
ATME 4155	41' 8"	101.5"	12' 9"	95.5"	84"	65 gal.	45 gal.	105 gal.	30 gal.	35,000 Btu	10 gal.
ATME 4156	41' 8"	101.5"	12' 9"	95.5"	84"	65 gal.	45 gal.	105 gal.	30 gal.	42,000 Btu	10 gal.

## SPARTAN® CHASSIS INFORMATION

FLOORPLAN	ENGINE HP	AXLE RATIO	FUEL CAP.	WHEELBASE	FRONT GAWR <sup>2</sup>	REAR GAWR <sup>2</sup>	GVWR <sup>2</sup>	GCWR <sup>2</sup>	APP. UVW	APP. NCC
ATME 3950	360	4.88	100 gal.	252"	14,500 lb.	20,000 lb.	34,500 lb.	42,500 lb.	26,396 lb.	8,104 lb.
ATME 4153	400	4.88	100 gal.	252"	14,500 lb.	20,000 lb.	34,500 lb.	42,500 lb.	27,596 lb.	6,904 lb.
ATME 4154	360	4.88	100 gal.	252"	14,500 lb.	20,000 lb.	34,500 lb.	42,500 lb.	26,800 lb.	7,700 lb.
ATME 4155	400	4.88	100 gal.	252"	14,500 lb.	20,000 lb.	34,500 lb.	42,500 lb.	28,209 lb.	6,291 lb.
ATME 4156	400	4.88	100 gal.	252"	14,500 lb.	20,000 lb.	34,500 lb.	42,500 lb.	28,800 lb.	5,700 lb.

#### SPARTAN® MID-ENGINE CHASSIS

Spartan has revolutionized the industry with the mid-engine chassis by moving the engine from the back to the middle. The new design expands floorplan options and improves driving performance. The mid-engine chassis allows for a perfectly balanced, stable ride, which is especially important when changing lanes and avoiding road debris. Plus, you'll experience the comfort of a quietly purring engine surrounded by state-of-the-art sound-insulating material. Maintenance is simplified with the side-mounted service center, where you can easily access the main chassis service components without any hassle. The mid-engine chassis provides excellent resale value and carries a 36-month, 50,000-mile, no-deductible warranty, which includes roadside assistance for the entire warranty period. So go ahead, share your adventures with the family without sacrificing a bit of comfort.



Lengths, heights, widths and dry weights are approximate. Weight will vary based on optional equipment added to the above base weight.

<sup>1</sup> Lengths do not include the rear ladder.

<sup>2</sup> Specifications are supplied by the chassis manufacturer.

**GAWR:** Gross Axle Weight Rating is the maximum permissible weight for an axle.

**GCWR:** Gross Combination Weight Rating is the value specified by the manufacturer of the vehicle as the maximum allowable loaded weight of this motorhome and any towed trailer or towed vehicle.

**GVWR:** Gross Vehicle Weight Rating is the maximum permissible weight of a fully loaded motorhome.

**UVW:** Unloaded Vehicle Weight is the weight of this motorhome as built at the factory with full fuel, engine oil and coolants. The UVW does not include cargo, fresh water, LP gas or dealer-installed accessories.

**NCC:** Net Carrying Capacity is the maximum weight of all occupants, including the driver, personal belongings, food, fresh water, waste water, LP gas, tools, tongue weight of towed vehicle, dealer-installed accessories, etc., that can be carried by the motorhome.





**ALLSTAR**  
2008 DIESEL MOTORHOME

## WHEN YOU KNOW THE DIFFERENCE

At Newmar, we do more than just manufacture RVs. We enhance the RV lifestyle for our customers—in everything we do. From the luxury and details we proudly build into our products, to providing responsive customer service and support. From developing industry-leading innovations, to staying loyal and true in our everyday business practices. These are our values; this is the Newmar difference. As we celebrate 40 years of high-quality Amish craftsmanship, we look forward to many more years of building products that exceed your highest expectations and deliver the durability and quality that sets us apart from everyone else.

NEWMAR CORPORATION • 355 N DELAWARE ST • PO BOX 30 • NAPPANEE IN 46550-0030  
574-773-7791 • Fax 574-773-2895 • [www.newmarcorp.com](http://www.newmarcorp.com)

Some features shown in our literature are optional. Colors and finishes are photographic representations. The actual materials may look different. Prices, specifications and floorplans are subject to change at Newmar's discretion, without prior notice or obligation. Please see your dealer for actual samples and specifications. © 2007 Newmar Corporation. Printed in the U.S.A. (05/07)