

# 08 HORIZON





**SMARTSPACE**  
WEB

### COMFORT AND LUXURY ARE ON YOUR HORIZON.

What is luxury? Is it upscale amenities? Is it the ability to choose a floorplan that is perfect for you? Is it being able to take more of your possessions with you on the road? You'll enjoy all of these luxuries and more in the 2008 Itasca Horizon®. The new Maxum™ Chassis delivers a powerful performance from a Cummins® ISL 8.9L, 425-hp engine. The chassis' lowered-rail design offers greater cross-coach storage

and a lower center of gravity for improved ride and handling. Coupled with the SmartSpace™ design philosophy that makes the most of the available space, you'll find yourself surrounded by stunning features like solid-wood cabinetry, solid-surface countertops and stainless steel appliances. If comfort and class are your priorities, the Itasca Horizon is the coach for you.

## YOU'VE GOT THE LOOK

Beautiful solid-wood cabinetry with an elegant satin finish lets you know right away you're in an Itasca Horizon. You'll relax in soothing luxury whether you're sitting in the Euro Recliner, Villa sofa/sleeper or the available Home Theater Lounge. They all come in soft UltraLeather™ for added style and comfort.

Movie night in the Horizon is a total sensory experience with a 37" LCD HDTV (32" in the 40KD) and a Sony® Home Theater Sound System. Add the King-Dome® in-motion satellite system to expand your viewing options on the living room and bedroom TVs.

Floor-ducted heating and ceiling-ducted TrueAir® residential central air conditioning provide optimal climate control. A heat pump is standard to help take the chill off cool mornings without starting the furnace. A standard ceiling fan in the bedroom and an available ceiling fan in the lounge area provide additional cooling comfort.

For added thermal efficiency, dual-glazed, flush-mounted windows come standard. Day/night pleated shades offer total control over sunlight and privacy levels.

**WEB** Select a Key Feature

The **WEB** icon designates a Winnebago Industries Key Feature. For further in-depth information and photos, use the Drop-down Menu or click on the 'Key Features' page at [winnebagoind.com](http://winnebagoind.com).



**40TD** Two large slideouts and a forward galley layout create an incredible amount of living space. It comes nicely appointed with ceramic tile floorcovering and an abundance of stylish cabinetry.



**VILLA SOFA/SLEEPER** Treat your guests to a pleasant night's sleep on the plush, innovative Villa sofa/sleeper (available on 40FD and 40KD). An inflatable mattress is incorporated right into the sofa. An automatic pump inflates the mattress in minutes.



**HOME THEATER LOUNGE** Complete your cinema experience with the Home Theater Lounge by Villa, available in the 40TD. Overstuffed cushions, soft UltraLeather upholstery and individual footrests provide the ultimate in relaxation.



**RECYCLING CENTER** Easily separate trash from recyclables in the handy slideout bins (40FD and 40WD).



40TD



**FULL-EXTENSION DRAWER SLIDES** Drawers are sized to maximize storage, hold tight with positive latches and open fully for easy access to stored items.



**WEB titaniumTOUCH™** The refrigerator/freezer features Titanium Touch™ stainless finish doors that have the look of stainless steel, resist fingerprints and are warmer to the touch than traditional stainless steel. You can even use your favorite magnets.

**COOK WITH GLASS**

Get cooking in a kitchen with all the finest amenities. Elegant solid-surface Corian® countertops, a tile backsplash and stainless steel appliances like a 30" microwave/convection oven make meal preparation a pleasure. There's also a space-saving pullout pantry on the 40FD and 40TD, and an available G.E. Advantium™ Speedcook oven to increase your cooking options.

After-dinner cleanups are quick and easy with a large, stainless steel sink. It includes a Moen® faucet with pullout sprayer and a separate faucet for clear, satisfying Aqua-Pure® filtered water.

Your dining options include the standard dining table and four chairs, the available BenchMark® full-comfort dinette or a new table/buffet.



**WEB BenchMark®** The available BenchMark full-comfort dinette incorporates innerspring cushions, flip-up storage compartments and even converts into a comfortable bed.



**DISHWASHER** Make meal cleanup a snap with the available drawer-style dishwasher. It features single-touch programming and uses as little as two gallons of water.



**TABLE/BUFFET** The available table/buffet gives a classy new twist to coach dining.

**RELAXING SPACE**

Wind down in the spacious bedroom after a long day on the road. Watch a movie before bed on the 20" LCD TV. It's connected to the rear stereo system which offers a CD/DVD player, AM/FM stereo, alarm clock, headphone jack and a connection for your MP3 player.

You'll sleep the night away in the Sleep Number® bed by Select Comfort.™ The 40KD even offers a king-size bed for a better night's sleep. A bedroom ceiling fan creates a gentle breeze on those warm summer nights.

There are numerous elegant touches in the bathroom, like ceramic tile floor-covering, Corian solid-surface counter-tops, a distinguished granite-look shower surround and a high-output water heater that ensures a ready supply of hot water. Keep the vacuum at home when you add the available central vacuum system with built-in vacpan by Dirt Devil.®



sleep  number  
by SELECT COMFORT



**WEB SLEEP NUMBER BED** Digital remotes let you adjust each side of the Sleep Number bed independently to your ideal level of comfort and support. Your Sleep Number – the Key to a Better Night's Sleep.™



**BEDROOM**  
The 40TD offers a padded bench with storage below.



**WASHER/DRYER** This available combination washer/dryer features multiple wash, time and temperature cycles, and tucks away behind wood doors.

## A SMOOTH RIDE

The Horizon makes the journey as much fun as the destination. High-back cab seats in soft UltraLeather and six-way power pedestals are perfect for long days on the road or evenings at the campsite.

The Horizon provides a superb driving experience with a tilting SmartWheel™ steering wheel and a touchpad transmission. Dash instruments include an electronic compass, digital thermometer, Sony® rearview monitor and available sideview cameras that allow you to view the sides of the coach for added peace of mind when turning and maneuvering. Other driver conveniences include built-in defroster fans, available GPS, map lights and power sunvisors.

While you drive, listen to CDs, AM/FM radio, your iPod/MP3 player or instant weather reports on the RV Radio.® It comes with a steering wheel remote that lets you change channels without taking your eyes off the road. A handheld remote is also provided to control the radio from the sofa or lounge chair.

Upgrade the RV Radio to include the Sirius® Satellite radio package with over 130 channels of crystal-clear programming. This package comes with a complimentary six-month subscription. The RV Radio with the Sirius Satellite package is iPod ready so you can listen to, and control, your iPod while you drive.



**DASH** You're in command when you take the wheel with controls that are conveniently positioned for easy viewing and operation.



**PEDALS** The accelerator and antilock brake pedals adjust to fit each driver at the touch of a button.



**WEB TRUELEVEL** Eliminate tank-level guesswork with our exclusive TrueLevel™ holding tank monitoring system. It incorporates detector cells that read liquid levels from outside the tank. No probes means no more corrosion, just accurate readings time after time.



**WEB POWERLINE** This energy management system monitors electrical usage and automatically cycles appliances on and off to prevent power overloads.



**WEB TRUEAIR** This residential-style central air conditioning system features a Coleman®-Mach cooling unit in the basement that cools 40% faster and runs 10% quieter than roof-pod units. A new two-stage, dual-output furnace provides quieter operation and more consistent floor-ducted heating on 40TD.



**KEYLESS ENTRY** Unlock the door and storage compartments using the keyless remote or touch pad entry.



**WEB position controls** Raise and lower the hydraulic jacks from three convenient locations. Do the job from the driver's seat or step outside and use the controls at the entrance door or service center to monitor the jacks as you lower them. No hassle. No guesswork. Just a level coach at your convenience.



## HAVE IT ALL

Why leave anything at home? The Horizon combines Smart Storage™, an incredibly spacious and easily accessible storage system, and the new Maxum lowered-rail chassis to let you bring along more gear.

The cavernous center storage compartment offers multiple configurations to best fit your storage needs. Choose the standard storage bins with lids or the available sliding tray and drawers to make even more accessible storage. Another example of Smart Storage is the available 7' folding step ladder that fits into a sleek storage sleeve.

The Horizon places all electrical and plumbing connections in one convenient location with color-coded labels for easy hookups and connections. This includes a hookup for a portable satellite dish.

You'll appreciate exterior enhancements such as electric patio and entrance door awnings, a screen door and a sturdy holder to keep the entrance door open. An 8,000-watt Cummins Onan® Quiet Diesel™ generator sits on a pullout tray for easy access.



**WEB** **MAXUM** **CHASSIS** Contemporary full-body paint schemes, an expansive one-piece windshield and seamless fiberglass sidewalls create a distinctive look.



**ENTERTAINMENT CENTER** Add the available exterior entertainment center with a 19" TV and CD/DVD player.



**INNOVATIVE STORAGE** The Maxum Chassis offers multiple storage configurations to fit your storage needs.



**SMART STORAGE** **WEB**



**SERVICE CENTER** The QuickPort® service connection hatch is fast and simple, allowing the bay door to close with hookups connected. The QuickConnect® coupling valve allows for quick, clean hookup and has its own holster.



**QuickPort** **WEB**



**QuickConnect** **WEB**

# MAXUM CHASSIS

WEB

## LEAVE NOTHING BEHIND

The Maxum Chassis™ offers up to 220 cubic feet of exterior coach storage so you can load up with everything you need for weeks on the road. The secret is its revolutionary lowered-rail design. This all-new feat of chassis engineering repositions the chassis frame rail increasing the cross-coach storage height for the most efficient use of space. Combined with Winnebago Industries® Smart Storage™ philosophy, you get taller compartment openings, larger pass-through compartments, and a storage capacity that no other chassis in its class can match.

## ENJOY THE RIDE

Winnebago Industries worked closely with Freightliner® to combine our exclusive SuperStructure® with the XCL Chassis to create a stronger, stiffer chassis for a whole new level of travel comfort. The Maxum Chassis eliminates much of the road vibration with a combination of innovative structural design and shock-absorbing components like rear air suspension. Take a ride in the Itasca Horizon® and feel how the Maxum Chassis with its lower center of gravity, rigid framework and 60° wheel cut delivers the smoothest ride and handling ever.

## THE MAXUM ADVANTAGE

- Independent front suspension
- 34,320 GVWR
- 425-hp ISL Cummins® clean air diesel engine
- Touchpad shifter
- Allison® 6-speed transmission
- Adjustable brake/accelerator pedals
- 10,000-lb. hitch®
- 4-wheel ABS anti-lock brakes
- NeWay® air suspension
- Engine compression brake
- 60° wheel cut
- Michelin® tires



THE LEADER AT EVERY TURN™

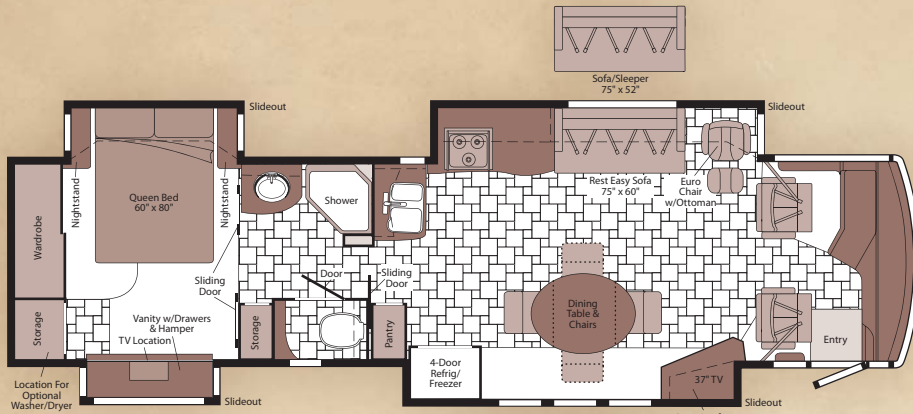
3-Year/50,000-Mile Limited Warranty (including towing and roadside assistance)—more than 400 North American service locations, 60 Freightliner® RV Oasis locations and a 24/7 help line add up to a commitment your customers can count on.



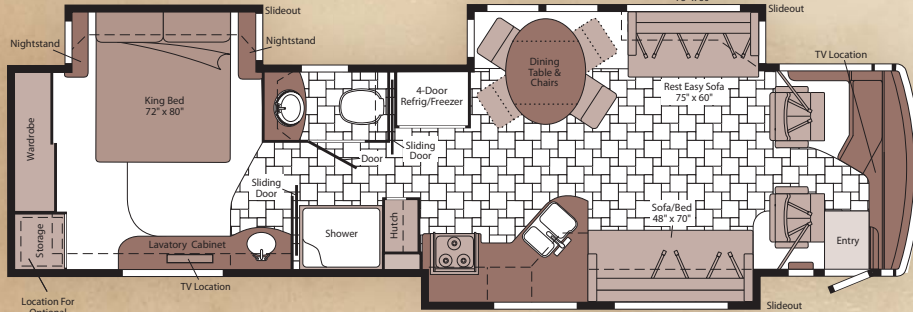
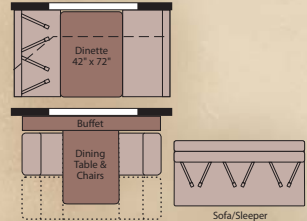
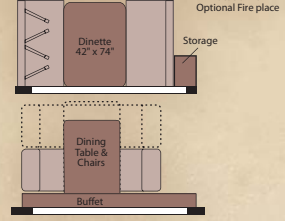
# 08 HORIZON FLOORPLANS

Carpet
  Ceramic Tile Floorcovering
 

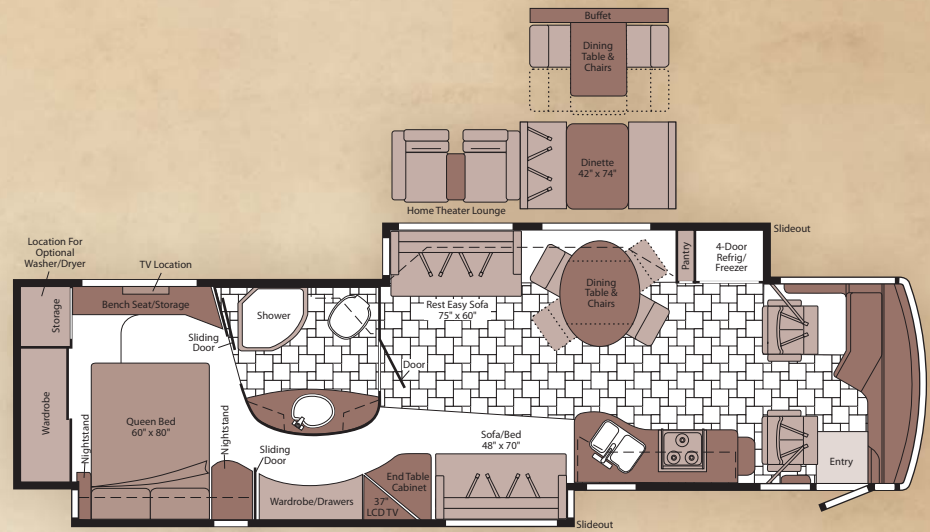
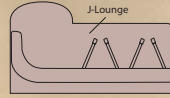
 Seat Belts
 
*Note: Dimensions shown are for sleeping space only and may vary due to styling differences. Dashed lines denote overhead storage areas.*



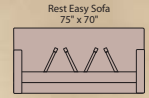
**40FD**



**40KD**



**40TD**



# 08 HORIZON SPECIFICATIONS

WEIGHTS & MEASURES	40FD	40KD	40TD
<b>Length</b>	39'10"	39'10"	39'10"
<b>Exterior Height<sup>1</sup></b>	12'4"	12'4"	12'4"
<b>Exterior Width<sup>2</sup></b>	8'5.5"	8'5.5"	8'5.5"
<b>Exterior Storage<sup>3</sup> (cu. ft.)</b>	220	220	205
<b>Awning Length</b>	20'	20'	20'
<b>Interior Height</b>	7'2.5"	7'2.5"	7'2.5"
<b>Interior Width</b>	8'0.5"	8'0.5"	8'0.5"
<b>Freshwater Capacity w/Heater<sup>4</sup> (gal.)</b>	103	103	103
<b>Holding Tank Capacity - Black/Gray<sup>4</sup> (gal.)</b>	49 / 92	49 / 92	51 / 117
<b>LP Capacity<sup>5</sup> (gal.)</b>	31	31	31
<b>Fuel Capacity (gal.)</b>	100	100	100
<b>GCWR<sup>6</sup> (lbs.)</b>	44,320	44,320	44,320
<b>GVWR (lbs.)</b>	34,320	34,320	34,320
<b>GAWR - Front (lbs.)</b>	14,320	14,320	14,320
<b>GAWR - Rear (lbs.)</b>	20,000	20,000	20,000
<b>Wheelbase</b>	267"	267"	267"

AUTOMOTIVE/CHASSIS	40FD	40KD	40TD
<b>Maxum™ Freightliner® Chassis</b> – Cummins® ISL 8.9L turbo-charged diesel, 425-hp, rear radiator, Allison® 6-speed electronic 3000 MH transmission, ZF™ - IFS front air suspension, NeWay® rear air suspension, 170-amp. alternator, 4-wheel ABS, engine compression brake	S	S	S
<b>Air Accessory Manifold</b> quick connect, 50' air hose, pressure gauge, manual air shutoff, <b>Battery Disconnect</b> chassis, manual, <b>Leveling Jacks</b> HWH® hydraulic w/3-position controls, <b>Trailer Hitch<sup>6</sup></b> 10,000-lb. drawbar/500 lbs. maximum vertical tongue weight & wiring, 7-pin connector, <b>Wheels</b> stylized aluminum	S	S	S

CAB AREA & DRIVER CONVENIENCES	40FD	40KD	40TD
<b>Cab Seats (UltraLeather™)</b> 6-way power-assist, armrests, manual footrest (passenger), adjustable lumbar support, multiadjustable slide/recline & swivel, <b>Compass</b> electronic w/ outdoor thermometer, <b>Console Center Cabinet</b> , <b>Cruise Control</b> , <b>Defroster Fans</b> auxiliary, built-in, 2-speed w/instrument panel switch, <b>Compression Brake Control</b> , <b>Floor Mat (Driver)</b> carpet, <b>Freightliner Information Center</b> see Freightliner's Owner's Manual, <b>Map Lights</b> , <b>Monitor System</b> rearview, color, single camera & 1-way audio, Sony®, <b>Power Door Locks</b> keyless entry w/remote, <b>Powerpoints</b> 12-volt DC, <b>Sliding Stepwell Cover Panel</b> 12-volt DC powered, <b>Steering Wheel</b> custom, SmartWheel™ w/power-assist, tilt, <b>Sunvisors</b> powered, <b>Trim Panels</b> driver & passenger, <b>Window (Driver)</b> full-slider w/screen, dual-glazed, <b>Window (Passenger)</b> partial slider w/screen, dual-glazed, <b>Windshield Wipers</b> intermittent, radial arms	S	S	S
<b>C.B. Radio</b> Cobra®, antenna, ant. lead, 12-volt DC power supply, <b>GPS Navigation System</b> (NA Canada), <b>Spotlight</b> roof-mounted w/wireless remote, <b>Video Camera System</b> side-mounted cameras, turn signal activated	0	0	0

ENTERTAINMENT	40FD	40KD	40TD
<b>Entertainment Center (Exterior)</b> AM/FM radio, CD player w/ remote, DC receptacle, AC duplex receptacle, TV jack, radio antenna, speakers (2), lockable compartment, <b>Home Theater Sound System</b> CD/DVD player, receiver, amplifier, speakers (5), subwoofer, Sony, <b>RV Radio® (Cab)</b> AM/FM stereo/CD player, remotes, iPod/MP3-ready, weather band, <b>Radio Power Switch</b> main/auxiliary battery, <b>Satellite System Ready</b> , <b>Stereo System (Bedroom)</b> AM/FM stereo, CD/DVD player, headphone jack, auxiliary input (plays MP3), recessed cube speakers (2), bass speaker, alarm clock, <b>Telephone</b> input & interior jacks, <b>TV 20"</b> AC color, bedroom, LCD, stereo w/remote, Sharp®, <b>TV Enhancement Package</b> antenna (amplified), interior jack(s), coax wiring, cable input, exterior jack, portable satellite dish hookup, <b>Video Selection System</b>	S	S	S
<b>Compact 10-Disc Changer</b> w/remote, <b>Entertainment Center w/ TV &amp; DVD Player (Exterior)</b> AM/FM stereo, radio, CD/DVD player w/remote, DC receptacle, AC duplex receptacle, TV 19" LCD AC color stereo w/remote, speakers (2), bass speaker, TV jack, radio antenna, alarm, headphone jack, auxiliary input (plays MP3), <b>Satellite Dish Antenna</b> RV digital, automatic, (less receiver), King-Dome®, <b>Satellite Dish Antenna</b> RV digital, in-motion dual LNB (less receiver), King-Dome, <b>Satellite Radio</b> Sirius®, antenna, receiver, includes 6-month paid subscription, iPod interface, cable connect, <b>TV Enhancement Package - Powered</b> (up/down/turn), antenna (amplified), interior jack(s), coax wiring, cable input, exterior jack, portable satellite dish hookup	0	0	0
<b>TV LCD 27"</b> AC color, bedroom, stereo w/remote, Sharp			0
<b>TV LCD 32"</b> AC color, high-definition, stereo w/remote, Sony		S	
<b>TV LCD 37"</b> AC color, high-definition, stereo w/remote	S		S

INTERIOR	40FD	40KD	40TD
<b>Ceiling</b> vinyl, <b>Countertops</b> solid-surface, Corian®, <b>Curtain</b> front wraparound w/pull cords, <b>Light(s)</b> wall lamp(s), <b>Lights</b> ceiling w/wall switches, <b>Lights</b> fluorescent, lounge, <b>Lights</b> reading, auxiliary, <b>Shade Package</b> roof vents, <b>Shades</b> pleated, day/night, blackout, <b>Windows</b> dual-glazed/thermo-insulated/flush-mounted	S	S	S
<b>Ceiling Fan</b> , lounge, <b>Sunscreen Package</b> windshield screen, windshield wiper covers, <b>Vacuum Cleaner</b> central, w/built-in vacpan, Dirt Devil®	0	0	0
<b>Fireplace</b> electric	0		

FURNITURE	40FD	40KD	40TD
<b>BenchMark® Full-Comfort Dinette (UltraLeather)</b> w/access to storage below, child seat tether anchor, <b>Dining Table/Bufferet &amp; Chairs</b> freestanding (2), folding (2)	0	0	0
<b>Dining Table &amp; Chairs</b> freestanding (2), folding (2), oval freestanding table, <b>Rest Easy (UltraLeather)</b> dual control	S	S	S
<b>Entertainment Center</b> hardwood	S		S
<b>J-Lounge (UltraLeather)</b> access to storage below, throw pillows, Villa		0	
<b>Lounge Chair (UltraLeather)</b> Euro w/ottoman	S		
<b>Sofa/Sleeper (UltraLeather)</b> air mattress, throw pillows, Villa	0	0	
<b>Sofa/Bed (Fabric)</b> access to storage below, removable armrests, throw pillows		S	S
<b>Sofa/Bed (UltraLeather)</b> access to storage below, removable armrests, throw pillows		0	0
<b>Rest Easy (UltraLeather)</b> dual control			0
<b>Theater Lounge Seats (UltraLeather)</b> recliner, dual footrest, flip-up cover & beverage/snack tray area, Villa			0

GALLEY	40FD	40KD	40TD
<b>Faucet</b> single-control w/pullout sprayer, Moen, <sup>®</sup> <b>Lights</b> fluorescent, ceiling & undercabinet, <b>Microwave/Convection Oven</b> w/sensor cook feature & exterior vent range fan, residential 30," stainless steel, Sharp, <b>Range Cover</b> flush-mounted (countertop material), <b>Range Top</b> 3-burner w/storage below, recessed, sealed burners, stainless steel, Amana, <sup>®</sup> <b>Refrigerator/Freezer</b> 4-door w/icemaker, Titanium Touch™ stainless finish, Norcold, <sup>®</sup> <b>Roof Vent</b> insulated, w/rain sensor, powered ventilator fan, <b>Silverware Tray</b> wood, <b>Sink Covers</b> countertop material, <b>Wastepaper Basket(s)</b> , <b>Water Filtration System</b> Aqua-Pure, <sup>®</sup> separate faucet	S	S	S
<b>Countertop Extension</b> solid-surface, <b>Cutting Board</b> slideout			S
<b>Dishwasher</b> drawer-style, stainless steel, <b>Microwave/Speedcook Oven</b> w/range fan, residential 30," stainless steel, G.E. Advantium™ (NA Canada)	0	0	0
<b>Hutch</b> decorative glass, adjustable shelf, <b>Island Storage Bin</b> large, roll-out		S	
<b>Pantry</b> pull-out	S		S
<b>Refrigerator/Freezer</b> 2-door w/ice/water dispenser, stainless steel, Dometic <sup>®</sup>			0

BATH	40FD	40KD	40TD
<b>Cabinet</b> lavatory, <b>Cabinet</b> linen, <b>Cabinet</b> medicine, <b>Faucet (Shower)</b> single-control handheld showerhead, <b>Light</b> shower, <b>Light</b> fluorescent, recessed, <b>Lights</b> makeup, <b>Roof Vent</b> insulated, w/rain sensor, power, private toilet room, <b>Soap Dispenser</b> , <b>Shower</b> w/wall surround, granite-look, <b>Shower Door</b> textured glass, <b>Shower Seat</b> (NA 40KD)	S	S	S

BEDROOM	40FD	40KD	40TD
<b>Ceiling Fan</b> , <b>Headboard</b> , <b>Lights</b> reading, halogen, <b>Powerpoint</b> 12-volt DC receptacle, <b>Wardrobe</b> cedar lined	S	S	S
<b>Bed</b> Sleep Number <sup>®</sup> queen-size mattress by Select Comfort, <sup>™</sup> bedspread, pillows, throw pillows	S		S
<b>Bed</b> Sleep Number king-size mattress by Select Comfort, w/underbed storage, bedspread, pillows, throw pillows		S	

EXTERIOR	40FD	40KD	40TD
<b>Air Horns</b> under hood mount, <b>Awnings</b> patio, electric w/wind sensor, remote & entrance door, electric, <b>Awning Rails</b> , <b>Awnings</b> windows, <b>Door</b> entrance w/separate screen door w/roll-down screen, deadbolt lock, remote & touch pad entry, <b>Entrance Door Step</b> double, electric w/doorjamb switch, <b>Front Exterior Protective Mask</b> , <b>Lights</b> fog lamps, <b>Light</b> porch w/interior switch, <b>Light</b> underhood, <b>Light</b> service, driver side, <b>Lights</b> auxiliary docking lamps, <b>Locking Fuel-Fill Doors</b> , <b>Mirrors</b> electric remote w/defrost, turn signal, swing-away arms, <b>Mudflaps</b> rear, <b>Mud Guard</b> full-width, <b>Receptacle</b> AC duplex, <b>Sidewall Skin</b> 1-piece smooth fiberglass, high-gloss, <b>Step Ladder</b> folding, <b>Storage Compartments</b> smooth valance panels, trunk liner, gas cylinders, TriMark <sup>®</sup> KeyOne™ System, paddle latch, lights, power locks & remote, movable panels, <b>Storage Containers</b> set of 4 w/lids	S	S	S

EXTERIOR	40FD	40KD	40TD
<b>Refrigerator/Freezer</b> portable, <b>Spotlight</b> roof-mounted w/wireless remote, <b>Storage Tray</b> slideout, 60" w/built-in drawers below	0	0	0

SYSTEMS	40FD	40KD	40TD
<b>HEATING &amp; A/C – Automotive Heater/Air Conditioner</b> blend air system, <b>Furnace</b> 25,000 BTU, low-profile, secondary, <b>TrueAir<sup>®</sup> Residential Central Air Conditioning System</b> w/heat pump	S	S	S
<b>Furnace</b> 35,000 BTU, low-profile	S	S	
<b>Furnace</b> 40,000 BTU, low-profile			S
<b>ELECTRICAL – Auxiliary Start Circuit, Batteries (Coach)</b> deep-cycle (3), slideout tray, <b>Battery (Coach) Disconnect System, Battery (Chassis) Charger/Maintainer, Dual Battery</b> charge control (automatic), <b>Electrical Distribution System</b> AC & DC breaker panels, 50-amp., <b>Generator</b> 8,000-watt, Cummins Onan <sup>®</sup> Quiet Diesel™ pull-out tray, <b>Generator/Shoreline Automatic Changeover Switch, Converter/Inverter/Charger</b> DC/AC, 2,000-watt w/remote panel, <b>OnePlace<sup>®</sup> Systems Center</b> wall-mounted, PowerLine <sup>®</sup> energy management display, courtesy light, battery digital voltmeter, generator hourmeter gauge, generator start/stop switch, heating & A/C thermostat, holding tank levels, LP tank level, solar panel/battery charger light, water heater switch, water heater on light & pilot indicator light, water pump switch, water tank level, <b>Power Cord Reel</b> powered, 12-volt DC, <b>Power Cord</b> 50-amp., <b>Service Center (Electrical)</b> cable inputs, power cord, QuickPort <sup>®</sup> service connection hatch, shoreline/generator automatic changeover switch, telephone input, TV/satellite input, <b>Solar Panel</b> 10-watt battery charger	S	S	S
<b>Generator Automatic Start System</b>	0	0	0
<b>PLUMBING/LP – Drain</b> 1½" water tank, <b>Service Center (Drainage/Water)</b> drainage valves, holding tank flushing system, city water hookup/tank diverter fill, drain for freshwater system, exterior wash station w/pump switch, glove holder, monitor panel, soap dispenser, QuickPort service connection hatch, paper towel holder, portable satellite hookup, 20' sewer hose w/QuickConnect <sup>®</sup> coupling valve, <b>Tank</b> flushing system, black tank only, <b>Tank</b> holding, heated compartment, <b>Tank</b> LP, permanent mount w/gauge, <b>TrueLevel™ Holding Tank Monitoring System, Water Heater</b> 10-gallon (16-gallon output), LP gas/120 VAC w/motoraid, high-output, <b>Water System Winterization Package</b> water heater bypass valve & siphon tube, <b>Full-Coach Water System Filtration Package</b> replaceable filter, filter housing, wrench, <b>Water Hookup</b> city, <b>Water Pump</b> demand, <b>Washer/Dryer Prep, Water Tank Fill</b> pressurized city hookup w/diverter valve	S	S	S
<b>Washer/Dryer Combination, Water Supply Hose</b> w/reel	0	0	0

SAFETY	40FD	40KD	40TD
<b>Assist Bars</b> interior, <b>Assist Handle</b> exterior, lighted, acrylic w/logo, <b>Bumpers</b> front & rear, <b>Child Seat Tether Anchor</b> dinette, <b>Detectors/Alarms</b> LP leak, smoke, carbon monoxide, <b>Fire Extinguisher</b> 10 BC, <b>Ground Fault Interrupter, Lights</b> high-mount brakelamps, <b>Lights</b> daytime running, <b>Light(s)</b> courtesy w/wall switch(es), <b>Seat Belts</b> cab, integrated, <b>Seat Belts</b> lap (in selected areas), <b>Security Vault</b> bedroom, key lockable, <b>Slideroom Masterlock Switch</b> key activated, <b>Window</b> escape, <b>Windshield</b> 1-piece laminated safety glass	S	S	S

WARRANTY <sup>7</sup>	40FD	40KD	40TD
<b>12-month/15,000-mile basic warranty,<sup>8</sup> 36-month/36,000-mile limited warranty on structure,<sup>8</sup> 10-year limited parts &amp; labor warranty on roof skin<sup>8</sup></b>	S	S	S

- The height of each model is measured to the top of the tallest standard feature and is based on the curb weight of a typically equipped unit. The actual height of your vehicle may vary by several inches depending on chassis or equipment variations. Please contact your dealer for further information.
- Horizon floorplans feature a wide-body design - over 96" In making your purchase decision, you should be aware that some states restrict access on some or all state roads to 96" in body width. Before making your purchase decision, you should confirm the road usage laws in the states of interest to you.
- The load capacity of your motor home is designated by weight, not by volume, so you cannot necessarily use all available space when loading your motor home.
- Capacities are based on measurements prior to tank installation. Slight capacity variations can result due to installation applications.
- Capacities shown are tank manufacturer's listed water capacity (W.C.). Actual filled LP capacity is 80% of listing due to overfilling prevention device on tank.
- Actual towing capacity is dependent on your particular loading and towing circumstances which includes the GVWR, GAWR, and GCWR as well as adequate trailer brakes. Please refer to the Operator's Manual of your vehicle for further towing information.
- See separate chassis warranty.
- See your dealer for complete warranty information.

NA Not Available

S Standard

0 Optional

Not all items available in combination. See dealer for details.

Winnebago Industries<sup>™</sup> continuing program of product improvement makes specifications, equipment, model availability, and prices subject to change without notice. Comparisons to other motor homes are based on the most recent information available at printing.

## INTERIOR DECOR

Choose from three fabric selections and three cabinet wood choices with hidden hinges.



2-TONE  
SOFA

MAIN

ULTRA-  
LEATHER

BEDSPREAD

ACCENT

CARPET



Garden View w/available Briarwood/Ragweed UltraLeather™



Thunder Bay w/available Papyrus/Sand Box UltraLeather



Twilight w/available Fields/Truffle UltraLeather



Concert Cherry



Washed Maple



Honey Cherry

## FULL-BODY PAINT



Copper Cloud



Island Teal



Fieldstone



Burgundy

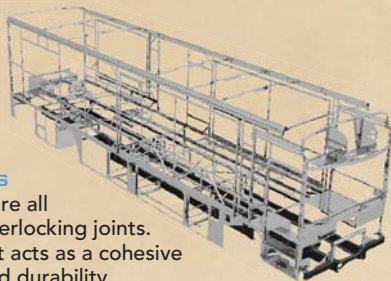


**BUILT BY WINNEBAGO INDUSTRIES.  
BUILT TO LAST.**

Itasca motor homes are built by Winnebago Industries, the company that defined motor homes. The company that built its reputation on quality construction. The company that transformed the motor home concept into a way of life.

Today, Winnebago Industries brings that reputation for quality and its 49-year history of motor home innovation to the design and construction of every motor home. It's all a part of SuperStructure<sup>®</sup>, our exclusive system of proprietary structural components that instills each motor home with improved strength and durability.

**SOLID FOUNDATION** Steel and aluminum truss work provides a solid, flat foundation for the floor and sidewalls. Winnebago Industries engineers also take special care to distribute the weight of components to ensure proper handling and stability.



**INTERLOCKING JOINTS**

The floor, sidewalls and roof are all integrally connected using interlocking joints. This creates a coach body that acts as a cohesive unit for improved strength and durability.

**E-COATING** Winnebago Industries employs an exclusive 12-stage automotive-style dip tank process to apply an advanced electrodeposition coating on critical steel components for superior corrosion protection.



**WEB**

**THERMO-PANEL<sup>®</sup> SIDEWALLS** Invented by Winnebago Industries, Thermo-Panel construction combines a fiberglass panel, high-density, block-foam insulation and aluminum support structures to create some of the most durable, lightweight sidewalls in the industry.

**ATTENTION TO DETAIL** Whether it's sending every coach through a high-pressure water tunnel to check for leaks or labeling each individual wire and bar-coding parts to save time and frustration during service, Winnebago Industries considers every detail to ensure your Itasca motor home provides you with years of pleasure.

**STRONG AS STEEL** Appliances are secured directly to embedded steel plates for added safety. Windshields are also mounted in steel with an automotive-style sealant; lesser designs use a rubber gasket to mount the windshield in fiberglass.



1-year-old Itasca fiberglass roof



1-year-old competitor's rubber roof

**FIBERGLASS ROOF** The Horizon features a crowned, one-piece fiberglass roof, backed with a 10-year limited parts-and-labor roof skin warranty. Fiberglass offers superior strength, attractiveness and durability over the rubber roofs found on many competitive models which can chalk, streak and degrade over time. Fiberglass also provides increased puncture and tear resistance.



**TAKE A TOUR** We're proud of our process, state-of-the-art facilities and the people who make Winnebago Industries number one. We invite you to visit our factory in Forest City, Iowa, for a first-hand look at the dedication and technology behind every motor home we build.



**RECOGNIZED QUALITY** The Recreation Vehicle Dealer Association annually rates RV manufacturers and awards the Quality Circle award to manufacturers who provide exceptional products, service and support. Winnebago Industries is proud to be the only manufacturer to receive this award every year since its inception.



**COMMITTED TO SERVICE** We back our motor homes with the industry's best service after the sale.

- 12-month/15,000-mile basic limited warranty
- 36-month/36,000-mile warranty on structure
- Standard 10-year limited parts-and-labor roof skin warranty
- Complimentary 24-hour roadside assistance program
  - RV Technical Assistance Hotline
  - RV Service Appointment Assistance
  - Emergency Trip Interruption
  - Emergency Message Service
  - Nationwide Trip Routing
  - Fee-Free Travelers Cheques
- TripSaver Fast Track Parts. TripSaver guarantees that in-stock warranty parts ship directly to your dealer within 24 hours.
- National dealer service network



**WIT CLUB** Itasca owners are like family. Joining the Winnebago-Itasca Travelers is a great way to meet and travel with other Itasca enthusiasts. Members enjoy:

- Caravans and rallies
- Local and state group activities
- RV travel benefits



**WINNEBAGOIND.COM** Visit us on the web for more info on all of our motor homes, the latest product updates and a host of web-exclusive content.

For Sales and Service Information Contact:



Built proudly by



NYSE listing: WGO

©2007 Winnebago Industries, Inc.

Printed in USA

Seat belts are your most important hookup. Always buckle up.