

Wildwood

AMERICA'S FINEST SELECTION OF QUALITY BUILT,
FEATURE PACKED RECREATIONAL VEHICLES.

FEATURING TRAVEL TRAILERS, FIFTH WHEELS, PARK TRAILERS, SPORT UTILITY
CARGO HAULERS AND LUXURY BUILT FIBERGLASS ALUMA FRAME MODELS

Wildwood



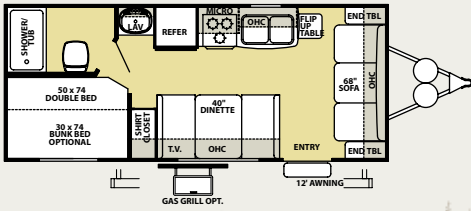
LE



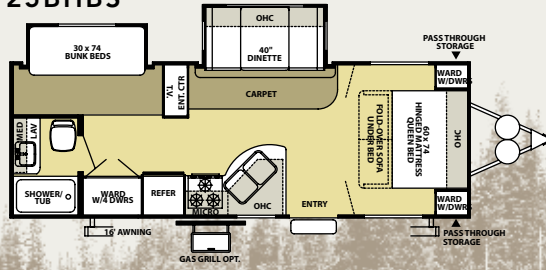
Wildwood



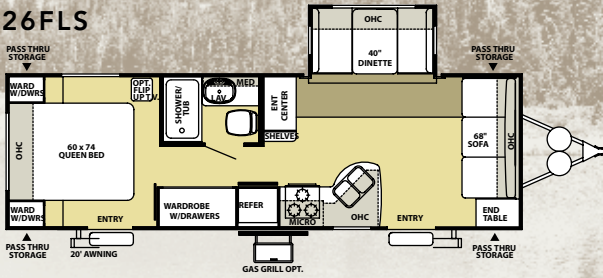
19BH



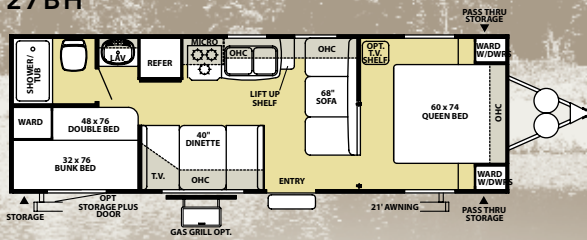
25BHBS



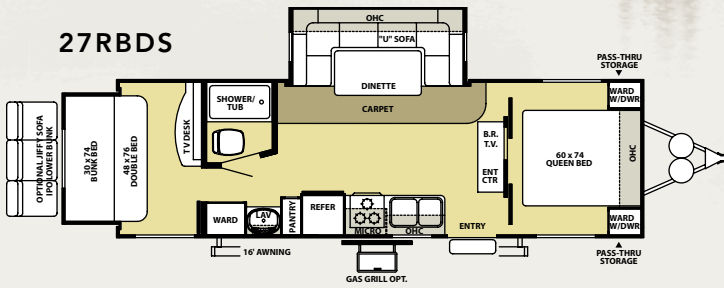
26FLS



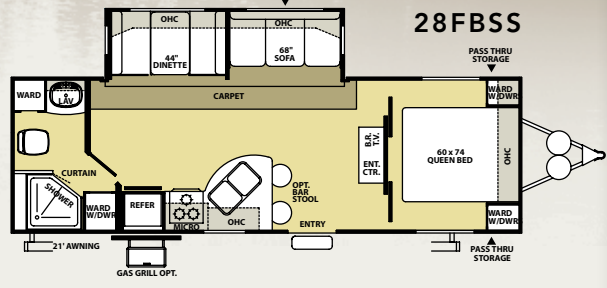
27BH



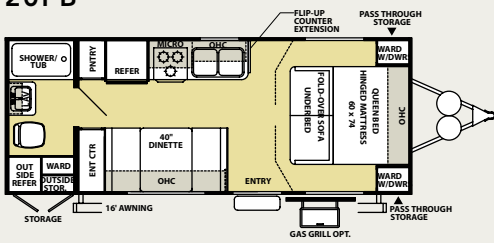
27RBDS



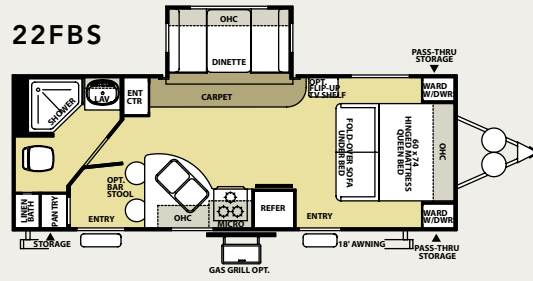
28FBSS



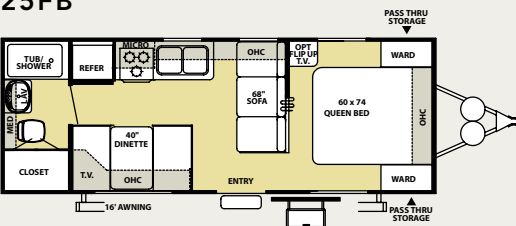
20FB



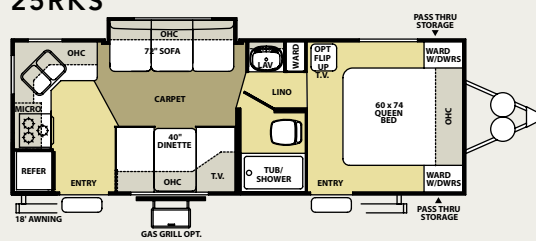
22FBS



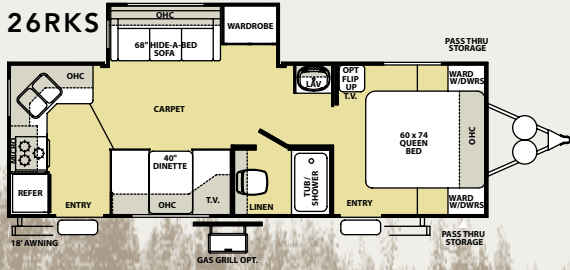
25FB



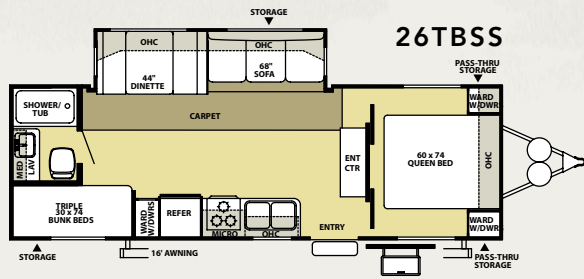
25RKS



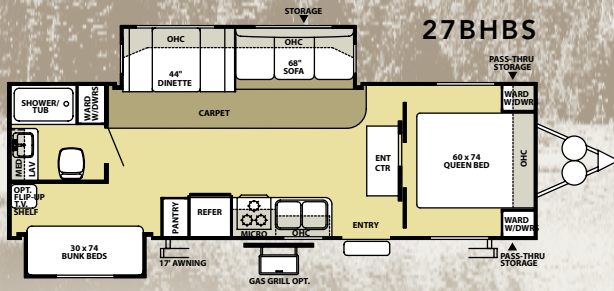
26RKS



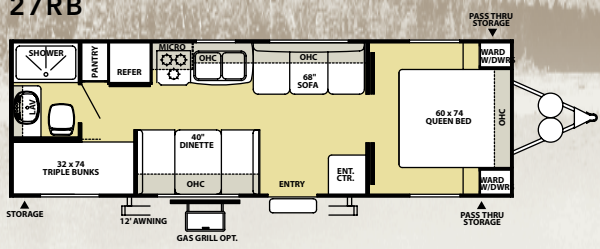
26TBSS



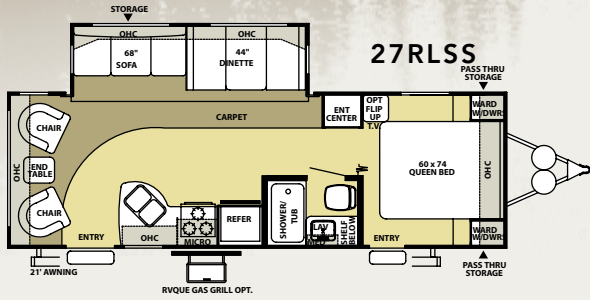
27BHBS



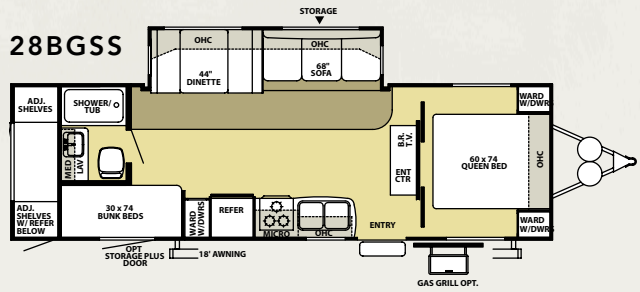
27RB



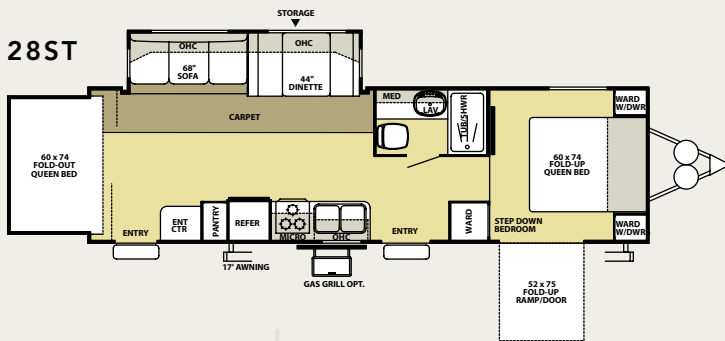
27RLSS



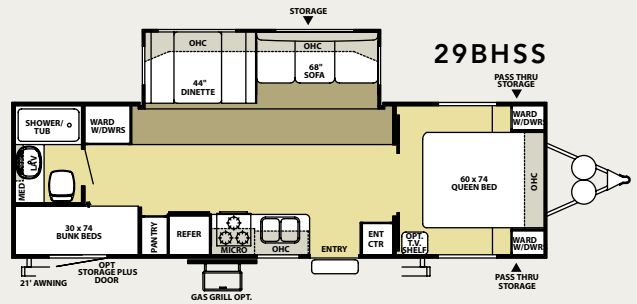
28BGSS



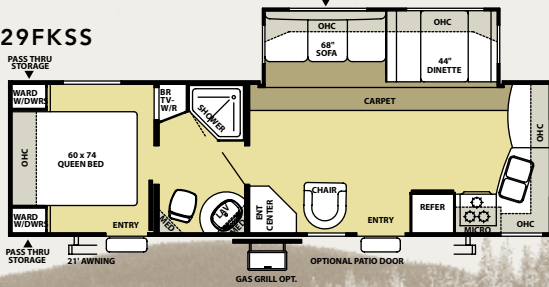
28ST



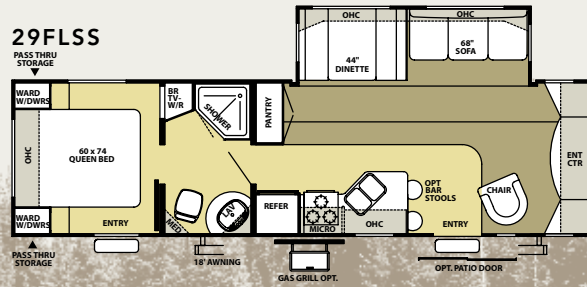
29BHSS



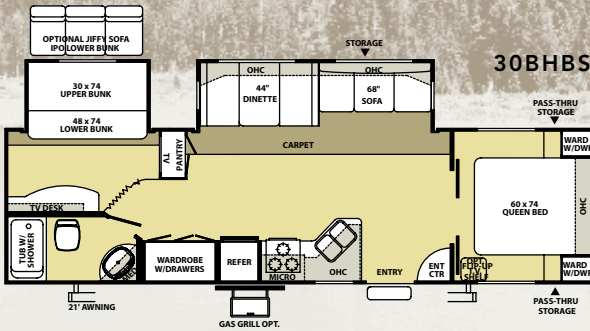
29FKSS



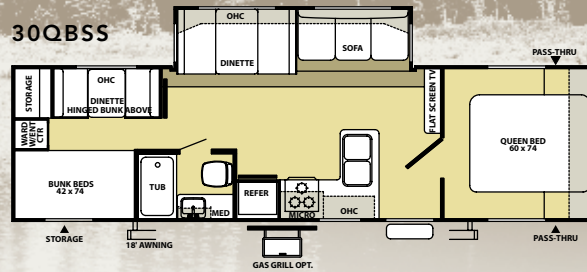
29FLSS



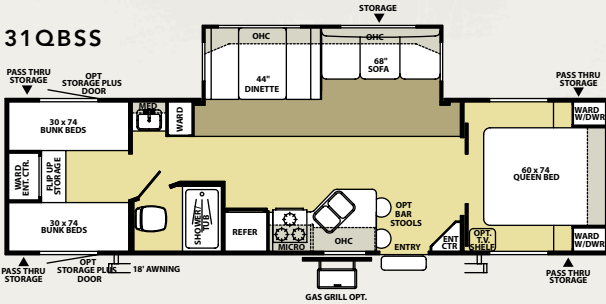
30BHBS



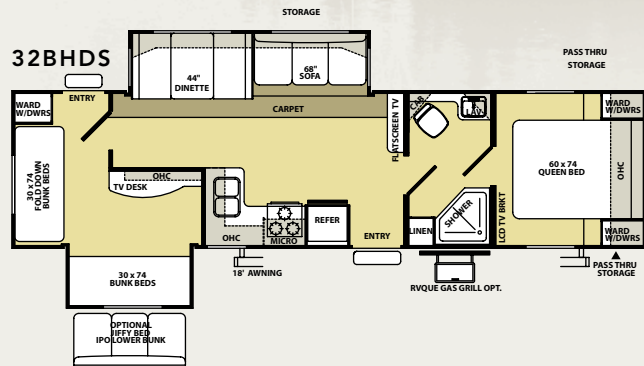
30QBSS



31QBSS



32BHDS



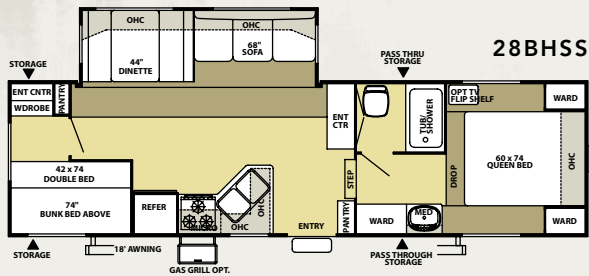
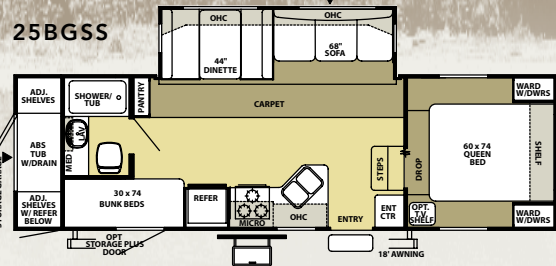
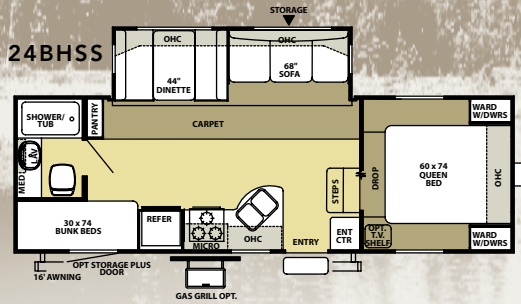
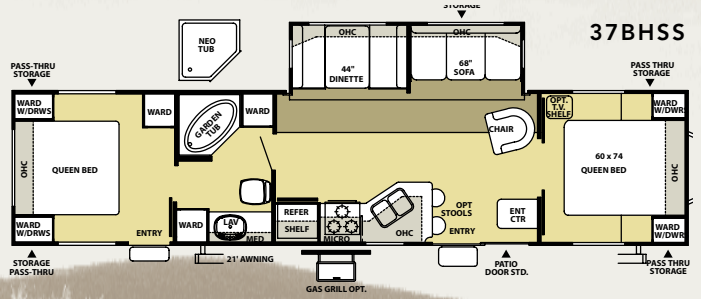
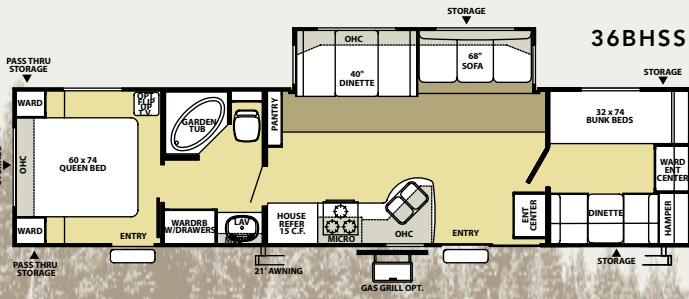
WILDWOOD LE TT NON-SLIDE MODELS

SLIDE MODELS

	19BH	20FB	25FB	27BH	27RB	22FBS	25RKS	26FLS	26RKS	26TBSS	27BHBS	27BHSS	27RBDS	27RLSS	28BSS
Hitch Weight (lb)	415	500	640	530	590	600	520	810	610	805	685	680	750	680	870
Axle Weight	3395	4120	4010	4210	4260	4670	4330	4970	5205	5075	5915	5060	5720	5230	5640
Dry Ship Weight	3810	4620	4650	4740	4850	5270	4850	5780	5815	5880	6600	5740	6470	5910	6510
GVWR	7415	7500	7640	7530	7870	7600	7520	7810	7610	7805	10845	7680	10910	7680	11030
CCC (Cargo Capacity)	3605	2442	2552	2352	3020	1892	2232	1592	1795	1925	4245	1502	4002	1332	4082
Ext Length	21' 6"	24' 8"	26' 5"	28' 10"	29' 5"	26' 4"	26' 4"	29' 7"	28' 1"	28' 9"	30' 2"	28' 4"	30' 2"	31' 1"	31' 3"
Ext Height	10' 6"	10' 6"	10' 6"	10' 6"	10' 6"	10' 7"	10' 7"	10' 7"	10' 7"	10' 7"	10' 7"	10' 7"	10' 7"	10' 7"	10' 7"
Int Height	80"	80"	80"	80"	80"	80"	80"	80"	80"	80"	80"	80"	80"	80"	80"
Fresh Water Cap (gal)	42	42	42	42	42	42	42	42	42	42	42	42	42	42	42
Black Water Cap (gal)	32	32	32	35	32	32	32	35	32	35	35	32	35	35	32
Grey Water Cap (gal)	35	35	35	32	35	35	43	35	43	35	35	35	35	35	35
Tire Size (in)	14"	14"	15"	15"	15"	15"	15"	15"	15"	15"	15"	15"	15"	15"	15"
Awning Size (ft)	12'	14'	16'	21'	12'	18'	18'	20'	18'	16'	17'	16'	16'	21'	16'

All lengths include hitch and bumper.





TRAVEL TRAILERS

FIFTH WHEELS

	28FBSS	28ST	29FKSS	29FLSS	29BHSS	30BHBS	30QBSS	31QBSS	32BHDS	36BHSS	37BHSS	24BHSS	25BGSS	27RLSS	28BHSS	30QBSS
Hitch Weight (lb)	900	755	910	1030	590	780	980	805	615	990	970	1050	1040	1410	1430	1500
Axle Weight	5110	6385	5330	5635	5650	6370	5595	6430	7295	6390	6630	5000	5960	5540	6160	6560
Dry Ship Weight	6010	7140	6240	6665	6240	7150	6575	6660	7910	7380	7600	6050	7000	6950	7590	8060
GVWR	7900	10915	7910	11190	10750	10940	11140	10965	10775	11150	11130	8050	11200	11570	11590	11660
CCC (Cargo Capacity)	1452	3775	1232	4525	4131	3411	4565	4305	2865	3770	3092	1562	3762	4182	3562	3162
Ext Length	30' 3"	32' 3"	32'	33' 1"	31' 1"	34' 2"	33' 2"	34' 7"	35' 5"	37' 6"	39'	26' 2"	29' 1"	31' 3"	31' 3"	33' 6"
Ext Height	10' 7"	10' 7"	10' 7"	10' 7"	10' 7"	10' 7"	10' 7"	10' 7"	10' 7"	10' 7"	10' 7"	11' 5"	11' 5"	12' 2"	12' 2"	12' 2"
Int Height	80"	80"	80"	80"	80"	80"	80"	80"	80"	80"	80"	84"	84"	84"	84"	84"
Fresh Water Cap (gal)	42	42	42	42	42	42	42	42	42	42	42	42	42	42	42	42
Black Water Cap (gal)	32	32	35	35	32	32	35	32	35	32	32	32	32	32	32	32
Grey Water Cap (gal)	32	64	70	70	35	35	60	35	64	35	35	35	35	64	64	64
Tire Size (in)	15"	15"	15"	15"	15"	15"	15"	15"	15"	15"	15"	15"	15"	15"	15"	15"
Awning Size (ft)	21'	17'	18'	21'	21'	21'	21'	18'	18'	21'	21'	16'	16'	20'	18'	21'

All lengths include hitch and bumper.

LA



Wildwood



TINTED WINDOWS



PADDLE FAN



OUTSIDE RV GRILL



HIGH RISE FAUCET



SATELLITE HOOK-UP



EXTERIOR SHOWER



OUTSIDE SPEAKERS

LA

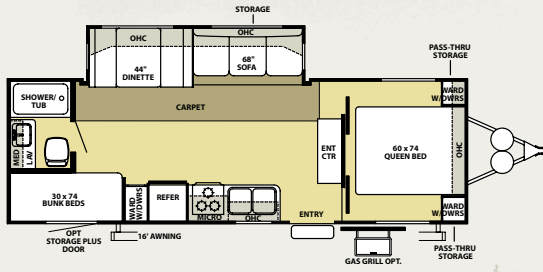


Wildwood

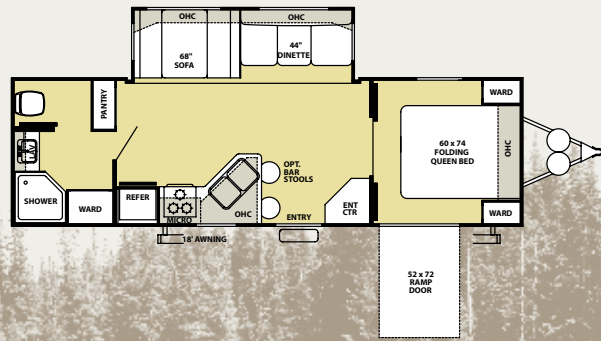




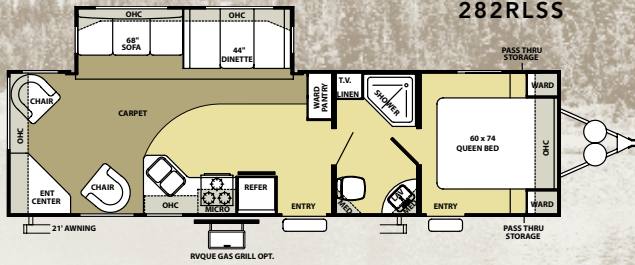
272BHSS



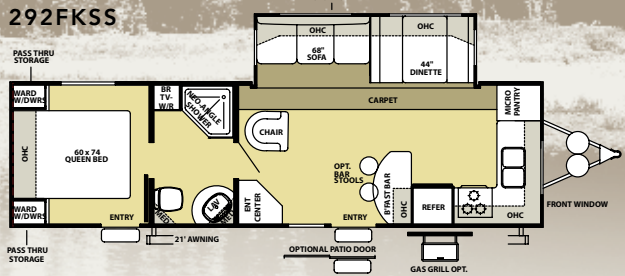
282RBSS



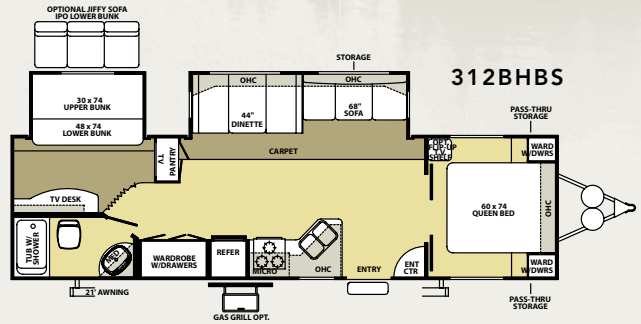
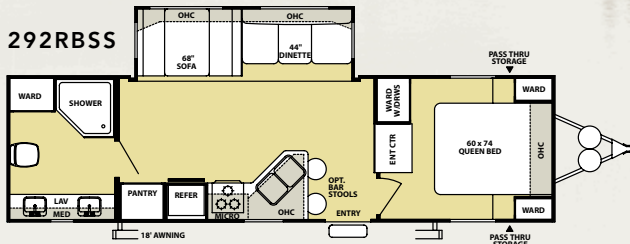
282RLSS



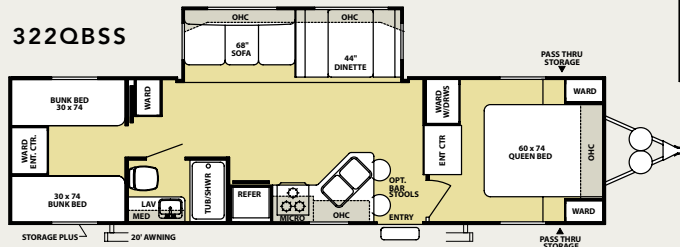
292FKSS



292RBSS



322QBSS



WILDWOOD LA SPECIFICATIONS

	272BHSS	282RBSS	282RLSS	292FKSS	292RBSS	312BHBS	322QBSS
Hitch Weight (lb)	750	580	950	965	670	825	900
Axle Weight	5290	6180	6115	5945	6245	6580	6560
Dry Ship Weight	6040	6760	7065	6910	6915	7405	7460
GWR	7750	10740	11110	11125	10830	10985	11060
CCC (Cargo Capacity)	1251	3980	3586	4215	3915	3121	3141
Ext Length	28' 9"	30' 9"	34' 2"	33' 3"	33' 3"	34' 2"	35' 9"
Ext Height	10' 7"	10' 7"	10' 7"	10' 7"	10' 7"	10' 7"	10' 7"
Int Height	80"	80"	80"	80"	80"	80"	80"
Fresh Water Cap (gal)	42	42	42	42	42	42	42
Black Water Cap (gal)	32	32	32	35	32	32	32
Grey Water Cap (gal)	35	32	35	70	35	35	35
Tire Size (in)	15"	15"	15"	15"	15"	15"	15"
Awning Size (ft)	16'	18'	21'	18'	18'	21'	20'

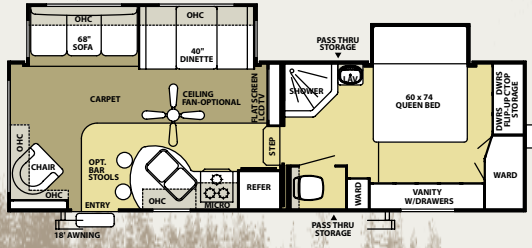
FIFTH WHEEL SPECIFICATIONS

	246RLBS	286RLSS	296RLSS	306QBSS	316RKBS	336BHBS	356RBDS
Hitch Weight (lb)	1125	1820	1350	1520	1575	1475	1420
Axle Weight	6420	6070	6570	6925	6765	7395	7860
Dry Ship Weight	7545	7890	7960	8445	8340	8870	9280
GWR	11285	11980	11510	11680	11735	11635	11590
CCC (Cargo Capacity)	3740	3631	3550	2776	3395	2306	2310
Ext Length	28' 6"	31' 2"	34' 7"	34' 7"	31' 0"	35' 10"	38' 2"
Ext Height	12' 2"	12' 2"	12' 2"	12' 2"	12' 2"	12' 2"	12' 2"
Int Height	84"	84"	84"	84"	84"	84"	84"
Fresh Water Cap (gal)	42	42	42	42	42	42	42
Black Water Cap (gal)	35	32	32	32	32	32	64
Grey Water Cap (gal)	35	32	35	64	64	35	64
Tire Size (in)	15"	15"	15"	15"	15"	15"	15"
Awning Size (ft)	18'	21'	21'	21'	18'	18'	21'

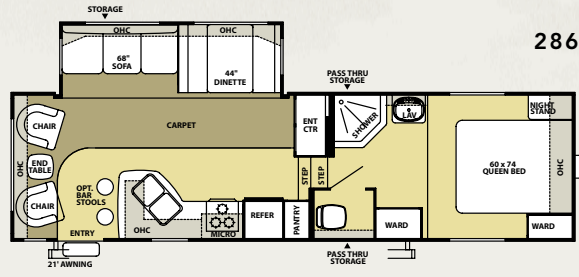
All lengths include hitch and bumper.



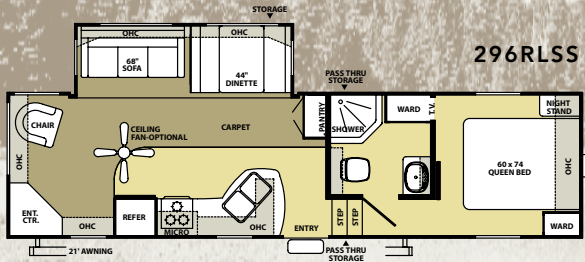
246RLBS



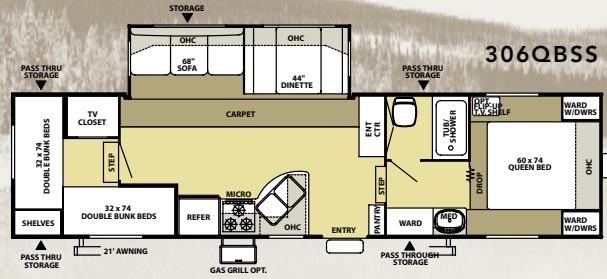
286RLSS



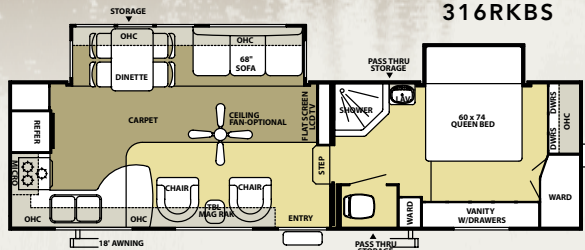
296RLSS



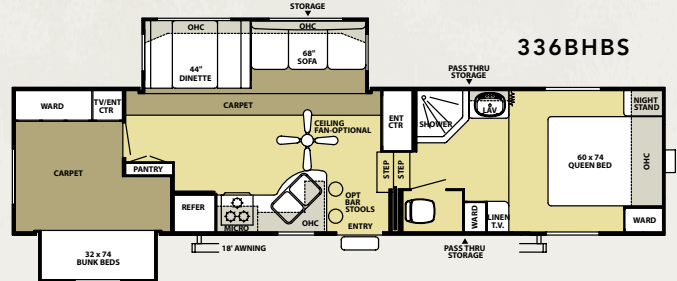
306QBSS



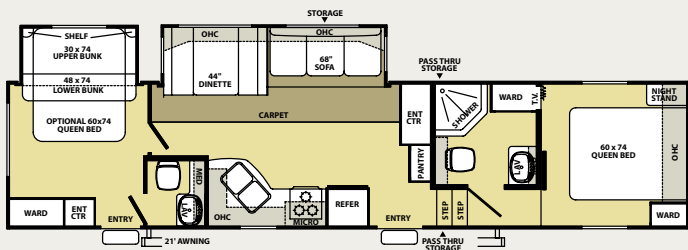
316RKBS



336BHBS



356RBDS



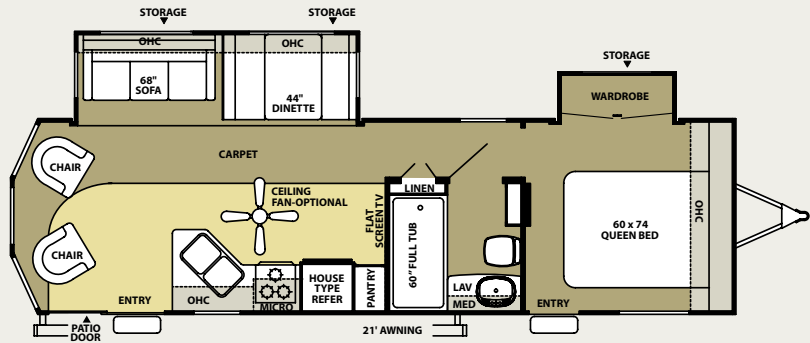
DOCKING LIGHT HITCH

XL

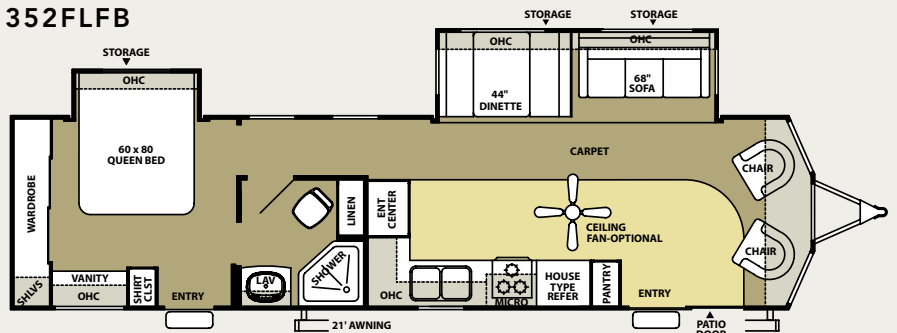




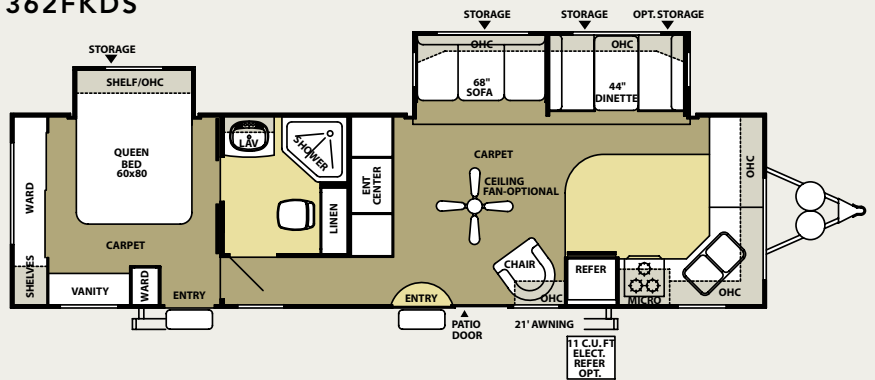
342RLDS



352FLFB



362FKDS



WILDWOOD XL SPECIFICATIONS

	342RLDS	352FLFB	362FKDS
Hitch Weight (lb)	840	1280	1000
Axle Weight	7325	7700	7720
Dry Ship Weight	8165	8980	8720
GVWR	11000	11440	11160
CCC (Cargo Capacity)	2835	2460	1980
Ext Length	34' 5"	38' 2"	36' 4"
Ext Height	11' 9"	11' 9"	11' 9"
Int Height	84"	84"	84"
Fresh Water Cap (gal)	42	42	42
Black Water Cap (gal)	32	32	43
Grey Water Cap (gal)	43	43	64
Tire Size (in)	15"	15"	15"
Awning Size (ft)	21'	21'	21'



Wildwood

PT



Wildwood



6+2 STEREO



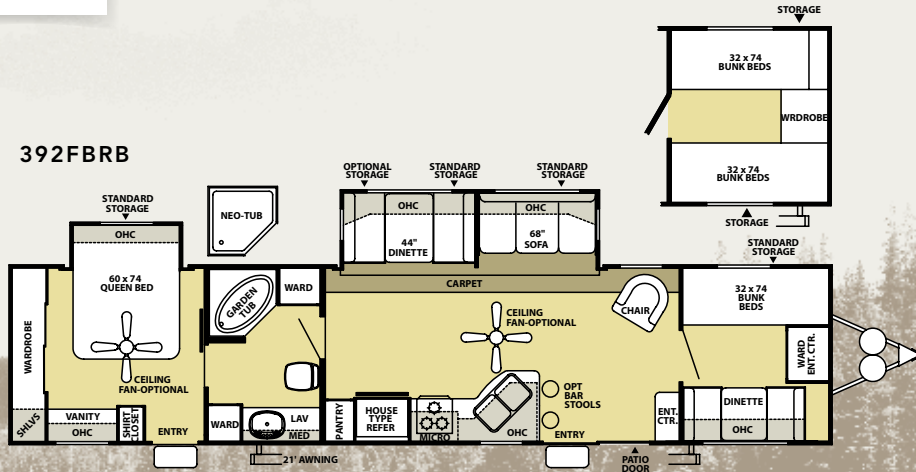
FANTASTIC FAN



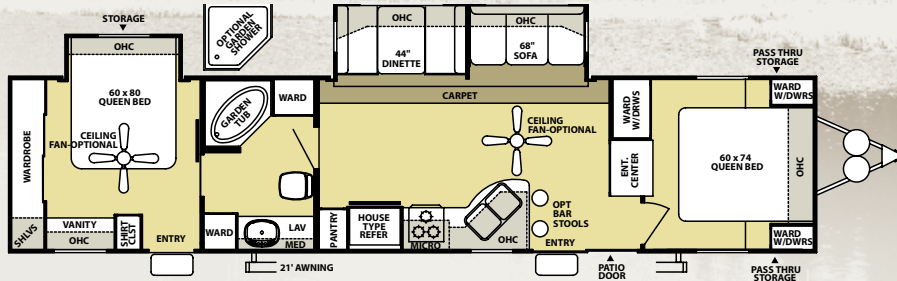
WATER FILTER



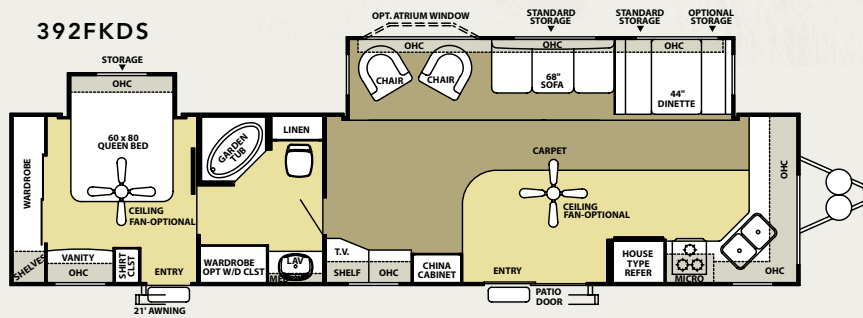
392FBRB



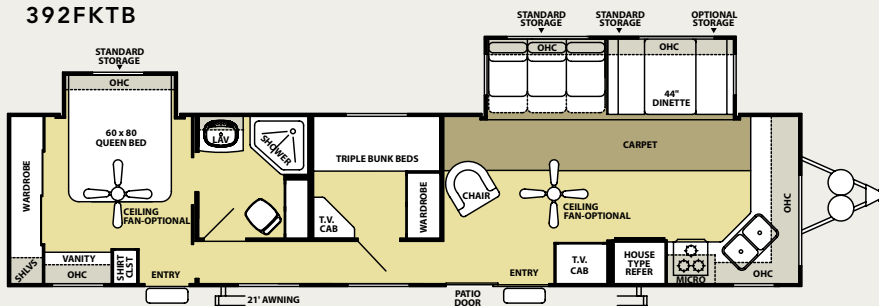
392FBRB2Q

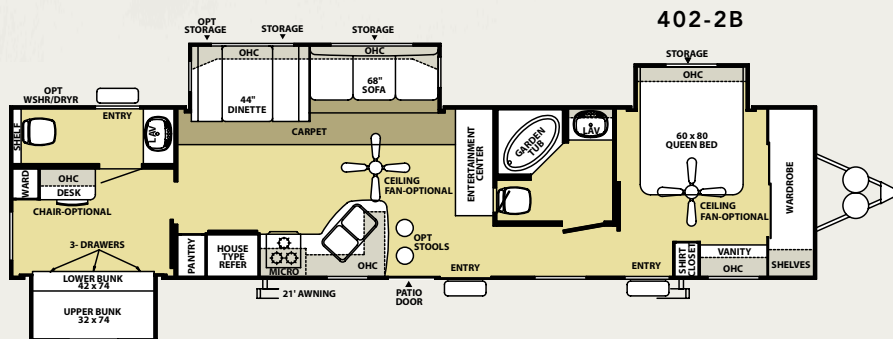
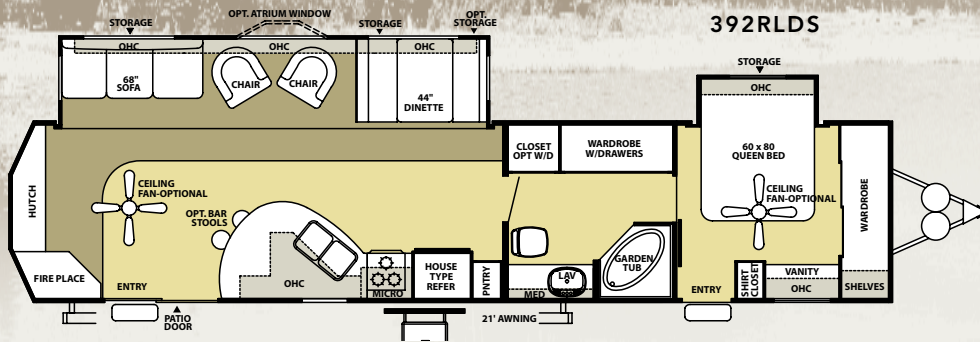
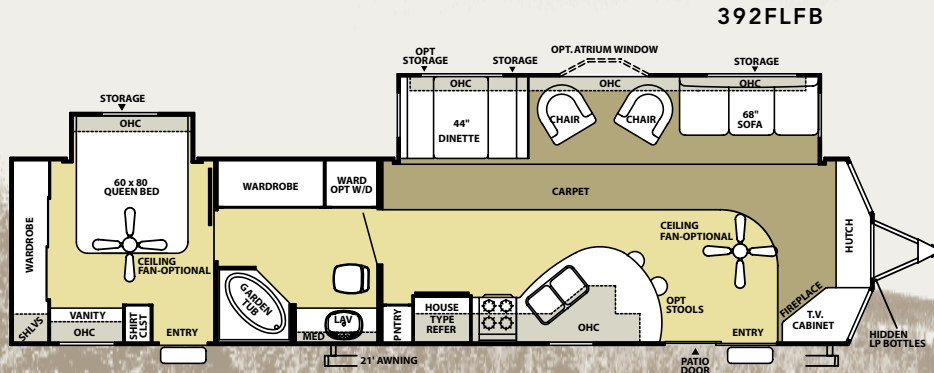


392FKDS



392FKTB





WILDWOOD PT SPECIFICATIONS

	392FBRB	392FBRB2Q	392FKDS	392FLFB	392RLDS	392FKTB
Hitch Weight (lb)	1000	1000	1550	1500	1150	1540
Axle Weight	8600	8600	8520	8700	8980	8365
Dry Ship Weight	9600	9600	10070	10200	10130	9905
GVWR	11400	11400	11950	11660	11310	11700
CCC (Cargo Capacity)	1340	1340	1420	1000	720	1335
Ext Length	42'	42'	42'	42'	42'	42'
Ext Height	11' 9"	11' 9"	11' 9"	11' 9"	11' 9"	11' 9"
Int Height	84"	84"	84"	84"	84"	84"
Fresh Water Cap (gal)	42	42	42	42	42	42
Black Water Cap (gal)	35	35	43	35	43	43
Grey Water Cap (gal)	43	43	64	43	43	64
Tire Size (in)	15"	15"	15"	15"	15"	15"
Awning Size (ft)	21'	21'	21'	21'	21'	21'



CONSTRUCTION AND EXTERIOR

- 3/8" Walk-on Roof Decking
- All New Graphics Package
- Three -Tone Aluminum Exterior
- .024" High Gloss Metal Exterior
- Diamond Plate Rockguard (Travel Trailers)
- Plywood Backed Exterior Mounts
- Rolled Side Metal (Slide-out models)
- Radius Baggage Doors with Thumb Pulls and Holdbacks
- Hose Carrier Bumper with End Caps
- Full Pass Through Storage (per floorplan)
- A & E Awning
- Radius Clamp Ring Jalousie Windows
- E-Z Open Entry Step
- Fiberglass Entrance and Baggage Doors
- Steel Framed 30" Smooth Fiberglass Main Entry Door
- Sofa Exterior Storage Door
- Adjustable LPG Tank Tray
- 20-lb LP Bottles with Cover
- Lockable Exterior Range Vent Cover
- Fender Skirts
- Tandem Axles
- Powder Coated I-beam frame (6", 8", or 10" per floorplan)
- Cambered Chassis
- 5/8" 5-Ply Tongue and Groove Plywood Floor Decking
- 2" x 3" Floor Joists 12" on Center
- Enclosed Fresh Water Tank in a Heated Compartment
- 6-Gal. LP Water Heater
- Water Heater By-pass
- Color Coded Water Lines and Dump Valves
- Seamless Roto-cast Holding Tanks
- 2" Wall Construction 16" (or less) on Center
- R-7 Fiberglass Insulation Throughout
- 13 ply Cross Micro-Laminated Beam Header above Slide-outs
- Double Wipe Slide-out Seal (Slide-out models)
- Electric Slide-Out Systems (Flush Floor)
- Seamless Roof with 12-Year Warranty
- Drip Rails with Downspouts
- 5" Bowed Truss Roof Rafters
- Arched-Mortise & Tenon Wood Cabinet Doors
- Swing Arm Entry Assist Handle

KITCHEN

- 80" Interior Height Travel Trailers (84" Fifth Wheel and SRV models)
- Dometic® Double Door Refrigerator
- Stainless Steel Sink
- Microwave with Carousel
- Magic Chef® oven
- Suburban 3-Burner, High Output Range
- Range Hood with 12-Volt Exhaust Fan and Light
- Armstrong® ToughGuard™ Flooring
- Rounded Counter Tops with Matching Edge
- Solid Wood Drawers
- Pantry Storage (per floorplan)
- Knife Rack

- Flip-Down Silverware Storage under Sink (where applicable)
- Large Overhead Cabinets
- Wall-Mounted Systems Monitor Panel

LIVING ROOM

- 80" Interior Height Travel Trailers (84" Fifth Wheel models)
- 69" Interior Slide Height (Slide-out models)
- Four Master Craft® Color Coordinated Interiors
- 13,500 BTU Roof Air Conditioner
- Swivel Rocker(s) (per floorplan)
- Flip Down Storage under Sofa (n/a sofa hide-a-bed)
- Stain Resistant Carpet w/ Padding
- Padded Entry Door Header
- Cloth Drapes with Mini Blinds
- Solid Wood Drawers
- Extra Large 44" Pedestal Booth Dinette (most Slide-out models)
- Large Dinette Picture Window
- TV Antenna and Booster
- Oversized Entertainment Center (per floorplan)
- AM/FM Stereo w/ CD and 4 Cube Speakers
- Wood Trim Slide-out Fascia with Fabric Insert (Slide-out models)
- Full Length Extra Large Overhead Cabinets (Slide-out models)
- Patio Door with Vertical Blinds (36BHSS)
- Swing-Arm Wall Sconce with Pleated Shade
- Flush Floor Electric Slide System with Manual Override (Slide-out models)
- 25K BTU Suburban Forced Air DSI Furnace with Thermostat
- In-Floor Rigid Heat Ducting

BEDROOM

- 80" Interior Height Travel Trailers
- Bedroom Carpet (Fifth Wheel models)
- Strut Lifted Storage Area under Bed
- Innerspring Mattress or Foam Flip-over (per floorplan)
- Bedside Wardrobes with Drawers
- Bedside A/C Power Outlets (2)
- Ventilation Windows

BATHROOM

- 12-Volt Power Bath Roof Exhaust Vent
- Wooden Medicine Cabinet with Mirrored Door
- Thetford® Fresh-Water Flush Toilet
- Wall-Mounted Towel Bar
- Hand Towel Ring

SECURITY AND SAFETY

- LP Leak detector
- Smoke Detector
- Carbon Monoxide Detector
- Fire Extinguisher
- Hitch Light (Travel Trailers)
- Amber Patio Light
- Welded Heavy Duty Safety Chains (Travel Trailers)
- Electric Brakes (all wheels)

- GFI Receptacles
- Lockable Fiberglass Radius Baggage Doors
- Flush Door Latch with Integral Dead Bolt Lock

WILDWOOD LE OPTIONS

- Black Frame Safety Glass Tinted Windows
- 6-Gallon Gas/Electric DSI Water Heater
- Exterior LP Gas Grill
- 13,500 or 15,000 BTU Ducted Air w/ Quick Cool
- Outside Shower
- Stabilizer Jacks (Travel Trailer (4) or Fifth Wheel (2))
- Electric Front Jacks (Fifth Wheel models)
- Decorative Wallpaper Border
- Double Hide-A-Bed Sofa
- Insulated Storage Plus Door with Jalousie Window (per floorplan)
- Fitted Designer Bedsread with Reverse Sham
- Bedroom Flip Table
- Multiple Bed Configurations (36BHSS)
- Cable TV
- Skylight over Tub
- Tub Surround
- 30-lb LP Bottles with Cover and Auto Change (Travel Trailers)
- Two Marine Grade Exterior Speakers
- Living Room Carpet in front of Slide Only
- Jiffy Sofa IPO Lower Bunk (27RBDS, 30BHBS and 32BHDS)
- Sliding Glass Patio Door (29FKSS, 29FLSS)
- Double Sink Cover
- iPod Docking Station

Contact your Wildwood dealer for a complete list of options

CONSTRUCTION AND EXTERIOR

- Upgraded Graphics Package
- Ultra Lube Axles
- Aluminum-framed Vacuum-bonded Laminated Sidewalls
- Tinted Black Frame Windows
- 3/8" Walk-on Roof Decking
- 30" Smooth Fiberglass Radius Entry Doors (26" Secondary)
- Diamond Plate Rockguard (Travel Trailers)
- Rolled Side Metal
- Radius Baggage Doors with Thumb Pulls and Holdbacks
- Swing Arm Entry Assist Handle
- Hose Carrier Bumper with End Caps
- Full Pass Through Storage (per floorplan)
- A & E Awning
- Radius Clamp Ring Jalousie Windows
- E-Z Open Entry Step
- Sofa Exterior Storage Door
- Adjustable LPG Tank Tray
- 20-lb LP Bottles with Cover
- Lockable Exterior Range Vent Cover
- Upgraded ABS Fender Skirts
- Tandem Axles w/15" Tires
- 8" Powder Coated I-beam Frame (10" 312BHBS)
- Cambered Chassis
- 5/8" 5-Ply Tongue and Groove Plywood Floor Decking
- 2" x 3" Floor Joists 12" on Center
- Enclosed Fresh Water Tank in a Heated Compartment
- 6-Gal. LP Water Heater
- Water Heater By-pass
- Color Coded Water Lines and Dump Valves
- Seamless Roto-cast Holding Tanks
- R-7 Fiberglass Insulation (Floors and Ceiling)
- R-9 Insulation (Sidewalls)
- Double Wipe Slide-out Seal
- Power Slide-Out Systems (Flush Floor)
- Seamless Roof with 12-Year Warranty
- Drip Rails with Downspouts
- 5" Bowed Truss Roof Rafters
- Arched-Mortise & Tenon Wood Cabinet Doors
- Heated Enclosed Underbelly

KITCHEN

- 80" Interior Height Travel Trailers (84" Fifth Wheel Models)
- Dometic® Double Door Refrigerator
- Grey Acrylic 60/40 Residential Sink
- Microwave with Carousel
- Magic Chef® oven
- Suburban 3-Burner, High Output Range
- Range Hood with 12-Volt Exhaust Fan and Light
- Armstrong® ToughGuard™ Flooring
- Rounded Counter Tops with Matching Edge
- Solid Wood Drawers
- Solid Wood Raised Panel Upper Cabinet Doors
- Pantry Storage (per floorplan)
- Knife Rack

- Flip-Down Silverware Storage under Sink (where applicable)
- Large Overhead Cabinets
- Wall-Mounted Systems Monitor Pane
- High Rise Faucett
- Raised Panel Oak Refer Inserts
- Nickel Hardware
- Cherry Wood Cabinets Throughout

LIVING ROOM

- 80" Interior Height Travel Trailers (84" Fifth Wheel Models)
- 69" Interior Slide Height
- Four Master Craft® Color Coordinated Interiors
- 13,500 BTU Roof Air Conditioner
- Swivel Rocker(s) (per floorplan)
- Solid Wood Raised Panel Upper Cabinet Doors
- Flip Down Storage under Sofa (n/a sofa hide-a-bed)
- Stain Resistant Carpet w/ Padding
- Padded Entry Door Header
- Cloth Drapes with Mini Blinds
- Solid Wood Drawers
- Extra Large 44" Pedestal Booth Dinette
- Large Dinette Picture Window
- TV Antenna and Booster
- AM/FM Stereo w/ CD and 4 Cube Speakers
- Cable TV and Satellite Prep
- Wood Trim Slide-out Fascia with Fabric Insert
- Extra Large Overhead Cabinets w/ Etched Glass
- Swing-Arm Wall Sconce with Pleated Shade
- Flush Floor Electric Slide System with Manual Override
- 25K BTU Suburban Forced Air DSI Furnace with Thermostat
- In-Floor Rigid Heat Ducting
- Cabinet Doors on Each Dinette Base

BEDROOM

- 80" Interior Height Travel Trailers
- Bedroom Carpet (Fifth Wheel Models)
- Strut Lifted Storage Area under Bed
- Innerspring Mattress or Foam Flip-over (per floorplan)
- Oversized Bunks (most models)
- Bedside Wardrobes with Drawers
- 4 Bedroom Drawers
- Ventilation Windows

BATHROOM

- Glass Shower Door (Neo-angle Showers)
- 12-Volt Power Bath Roof Exhaust Vent
- Wooden Medicine Cabinet with Mirrored Door
- Thetford® China Foot Flush Toilet
- Wall-Mounted Towel Bar
- Hand Towel Ring

SECURITY AND SAFETY

- LP Leak detector
- Smoke Detector
- Carbon Monoxide Detector

- Fire Extinguisher
- Hitch Light (Travel Trailers)
- Amber Patio Light
- Welded Heavy Duty Safety Chains (Travel Trailers)
- Electric Brakes (all wheels)
- GFI Receptacles
- Lockable Fiberglass Radius Baggage Doors
- Flush Door Latch with Integral Dead Bolt Lock

WILDWOOD ^{LA} OPTIONS

- Fiberglass Front Cap w/ Docking Light
- Free Standing Dinette w/4 Chairs
- Living Room Ceiling Paddle Fan (5th Wheel Models)
- Slide Room Awning
- Roof Ladder
- 6-Gallon Gas/Electric DSI Water Heater
- Black Frame Safety Glass Tinted Windows
- Extra Large 8 cu ft Double Door Refrigerator
- Exterior LP Gas Grill
- 13,500 or 15,000 BTU Ducted Air w/ Quick Cool
- Outside Shower
- Stabilizer Jacks (Travel Trailer or Fifth Wheel)
- Electric Front Jacks (Fifth Wheel models)
- Decorative Wallpaper Border
- Double Hide-A-Bed Sofa
- Insulated Storage Plus Door with Jalousie Window (272BHSS, 322QBSS)
- Fitted Bedspring with Reverse Sham
- Bedroom Flip Table
- Jiffy Sofa IPO Lower Bunk (312BHBS)
- Cable TV
- Skylight over Tub
- Tub Surround
- 30-lb LP Bottles with Cover and Auto Change (Travel Trailers)
- Two Marine Grade Exterior Speakers
- Slide Room Awning(s)
- Phone Jack
- Living Room Carpet in front of Slide Only
- iPod Docking Station
- Additional Sink Covers

Contact your Wildwood dealer for a complete list of options

COMFORT AND CONVENIENCE

- Four New Designer Color Coordinated Mastercraft® Interiors
- Designer Coordinated Drapes & Valances
- 102" Exterior Width for Increased Living Space
- 84" Interior Height
- Black Framed Tinted Glass Windows
- WaterPur™ Whole House Water Filtration System
- Water Heater By-Pass
- 6-gallon Gas/Electric DSI Water Heater
- Double Entry Doors (most floorplans)
- Pass Thru Storage (per floorplan)
- Dometic® 13,500 BTU Central Air Conditioner with Quick Cool Feature
- In-Floor Ducted Heat with 30K BTU Furnace
- Stain Resistant Carpet with Padding
- Armstrong® ToughGuard™ Plank Wood Flooring
- Flush-Floor Electric or Hydraulic Slide Rooms
- Systems Monitor Panel
- Jalousie Clamp Radius Windows (Bedroom, Living Room, and Kitchen)
- Solid Oak Drawer Fronts with Wood Sides
- Mortise and Tenon Cabinet Doors
- Mini Blinds Throughout (except bunk beds)
- Insulated Storage Plus Door w/ Jalousie Window and Bolt Lock (T332QBSS)
- Dual Bulb Overhead Lights (most areas)

KITCHEN

- 84" Interior Height
- Color Coordinated Countertop
- Rounded Euro Style Counter Tops with Matching Edge
- Raised Panel Cabinet Upper Doors
- 12V Power Range Hood with Light
- Magic Chef® Three-Burner High Output Range with 16" Oven
- Dometic® Double Door RV Refrigerator (6 cubic ft)
- Magic Chef® Microwave with Carousel
- Acrylic 60/40 Residential Style Kitchen Sink
- Residential Style Faucet
- Sink Cover
- Waste Basket
- Light above Sink
- Built in Knife Holder
- Flip Down Silverware Storage (per floorplan)
- Positive Cabinet Door Latches
- Pantry

LIVING ROOM

- 84" Interior Height
- Swivel Rocker Chair(s) (per floorplan)
- Waines Coating and Chair Rail (per floorplan)
- AM/FM/CD/Cassette Stereo System w/ remote control
- 6+2 Forest River Sound System with 100 Watt Subwoofer for True Surround Sound
- Surround Sound TV Hook-up
- TV Antenna with Booster
- Cable and Satellite Ready
- Extra Large TV Cabinets (per floorplan)

- 60" Glass Sliding Patio Door w/ Vertical Blinds (Travel Trailers, n/a 332QBSS)
- Extra Large Picture Window at Dinette
- Full Length Angled Overhead Cabinets with Etched Glass in Slide-outs
- 1/2" Plywood Hinged Dinette Seats
- Pots and Pans Storage Drawer under Booth Dinette
- Arched Dinette Backs
- Large External Luggage Doors behind Sofa and Dinette
- Extra Large 44" Pedestal Dinette for More Comfortable Dining and Sleeping
- Oak Trim at Ceiling
- Swing-out Wall Light with Pleated Shade
- Coordinating Wallpaper Border
- Wood Trim Slide-out Fascia with Fabric Insert

BEDROOM

- 84" Interior Height
- Fitted Décor-coordinated Bedspreads and Bunkspreads
- Deluxe Innerspring Mattress
- Bedroom Roof Vent
- Designer Coordinated Headboard (Fifth Wheel models)
- _" Plywood Bed and Bunk Platforms
- Lift-up Beds with Gas Struts (per floorplan)
- TV Shelf or Flip Table and Outlet in Bedroom
- Cable TV Hook-up
- 2 Stereo Speakers
- Stain Resistant Carpet w/ Padding
- Privacy Doors or Sliding Curtain (per floorplan)
- Side Ventilation Windows

EXTERIOR

- New Exterior Graphics Package
- .024 Gauge High Gloss Aluminum Three-Tone Exterior
- 30" Smooth Fiberglass Radius Primary Entrance Door (26" secondary)
- Smooth Fiberglass Radius Baggage Doors with Thumb Pulls and Holdbacks
- Plywood Backer on Exterior Mounts
- A & E Side Awning
- Diamond Plate Rock Guard (Travel Trailers)
- One-piece Rock Guard Awning (332FKDS and 362FKDS)
- Awning Drip Rail with Downspouts
- Upgraded ABS Color Keyed Fender Skirts with Scene
- 15" Radial Tires
- Entry Assist Handle
- 30 lb. Double LP Tanks with Automatic Change Over
- LP Tank Cover (Travel Trailers)
- City Water Fill with Valve
- Rear Bumper with Sewer Hose Storage

CONSTRUCTION

- 10" Extruded I-beam Frame
- Cambered Chasis
- Seamless Roto-cast Holding Tanks
- 50 gal Fresh Water Capacity
- Color Coded Water Lines and Dump

- Valve Handles
- Darco Underbelly Wrapped at Ends
- Boot Strapping
- 2" x 3" Floor Joists 12" on Center
- 5/8" 5-ply Tongue and Groove Plywood Floor Decking
- 2" Wall Studs Maximum 16" on Center
- Steel Framed 6' Entrance Doors
- 5" Bowed Truss Roof Rafters
- 3/8" Walk-on Roof Decking
- Seamless One-piece Rubber Roof w/12 Year Warranty
- Double Wipe Slide-out Seal
- R-7 Insulation
- Galvanized Steel Wheelwells with Fiberglass Insulation (except slide-outs)
- Extended Pin Box and Enclosed Gooseneck (Fifth Wheel Models)

SECURITY AND SAFETY

- Smoke Detector
- Fire Extinguisher
- Carbon Monoxide Detector
- LP Gas Leak Detector
- Flush Door Latch with Integral Dead Bolt Lock
- Main Entry Step Light with Interior Switch
- Amber Porch Light with Interior Switch
- Main Entry Doorside Scare Light
- Screen Door with Safety Latch
- GFI Receptacles and Covered Patio Outlet
- Welded Heavy Duty Safety Chains (Travel Trailers)
- Hitch Light (Travel Trailers)
- E-Z Open Entry Steps
- Lockable Fiberglass Radius Baggage Doors

POPULAR OPTIONS

- Safety Glass Black Framed Tinted Windows
- Fiberglass Exterior
- Fiberglass Front Cap (5th Wheel Models)
- 10-gallon Gas/Electric DSI Water Heater
- Skylight over Tub
- Bi-fold Shower Door (per floorplan)
- Garden Shower w/ Glass Door (per floorplan)
- Garden Tub Glass Door (per floorplan)
- Extra Large 8 cu-ft Double Door RV Refrigerator
- 11 cu-ft House Type Refrigerator (Travel Trailers)
- Double Sofa Hide-A-Bed
- Free Standing Dinette w/4 chairs and Flip Leaf
- Second Drawer under Dinette (n/a with Free Standing Dinette)
- Phone Jack
- Bar Stools (per floorplan)
- Front Power Jacks (Fifth Wheel models)
- Stabilizer Jacks
- Detachable Hitch
- Outside Shower
- Slide Room Awning(s)
- Spare Tire, Carrier and Cover
- Exterior LP Gas Grill
- Living Room Ceiling Paddle Fan w/ Wall Switch
- Living Room Carpet in front of Slide Only

Contact your Wildwood dealer for a complete list of options

COMFORT AND CONVENIENCE

- Four New Designer Color Coordinated Mastercraft® Interiors
- Designer Coordinated Drapes & Valances
- 102" Exterior Width for Increased Living Space
- 84" Interior Height
- Black Framed Tinted Glass Windows
- WaterPur™ Whole House Water Filtration System
- Water Heater By-Pass
- 20-gallon Electric DSI Water Heater
- 50 gallon Fresh Water Capacity
- Holding Tanks
- Double Entry Radius Doors
- Dometic® 15,000 BTU Central Air Conditioner with Quick Cool Feature
- In-Floor Ducted Heat with 40K BTU Furnace
- Stain Resistant Carpet with Padding
- Armstrong® ToughGuard™ Plank Wood Flooring
- Flush-Floor Hydraulic Slide Rooms with Manual Override
- Systems Monitor Panel
- 12 Volt Lighting
- 50 amp Electrical Service and 65 amp 12 Volt Converter
- Jalousie Clamp Radius Windows (Bedroom, Living Room, and Kitchen)
- Solid Oak Drawer Fronts with Wood Sides
- Mortise and Tenon Cabinet Doors
- Mini Blinds Throughout (except bunk beds)
- Dual Bulb Overhead Lights (most areas)

KITCHEN

- Color Coordinated Countertop
- Rounded Euro Style Counter Tops with Matching Edge
- Raised Panel Cabinet Upper Doors
- 20" Freestanding 4 Burner Gas Range with Oven
- 18 cu. Ft. Residential Electric Refrigerator with Icemaker
- Magic Chef® Microwave with Carousel and Range Hood
- Acrylic 60/40 Residential Style Kitchen Sink
- Residential Style Faucet
- Sink Cover (1)
- Light above Sink
- Built in Knife Holder
- Flip Down Silverware Storage (per floorplan)
- Positive Cabinet Door Latches
- Waste Basket
- Pantry

LIVING ROOM

- Swivel Rocker Chair(s) (per floorplan)
- Waines Coating and Chair Rail (per floorplan)
- AM/FM/CD/Cassette Stereo System w/ remote control
- 6+2 Forest River Sound System with 100 Watt Subwoofer for True Surround Sound
- Surround Sound TV Hook-up
- TV Antenna with Booster
- Cable and Satellite Ready
- Extra Large TV Cabinets (per floorplan)
- 60" Glass Sliding Patio Door with Vertical Blinds
- Extra Large Picture Window at Dinette (slide-out models)
- Full Length Angled Overhead Cabinets with Etched Glass in Slide-outs (most models)
- 1/2" Plywood Hinged Dinette Seats

- Pots and Pans Storage Drawer under Booth Dinette
- Arched Dinette Backs
- Large External Luggage Doors behind Sofa and Dinette
- Extra Large 44" Pedestal Dinette for More Comfortable Dining and Sleeping
- Oak Trim at Ceiling
- Swing-out Antique English Wall Light with Pleated Shade
- Coordinating Wallpaper Border
- Solid Oak Slide-out Fascia

BEDROOM

- Fitted Décor-coordinated Bedspreads and Bunkspreads
- Deluxe Innerspring Mattress
- Bedroom Roof Vent
- 1" Plywood Bed and Bunk Platforms
- Lift-up Beds with Gas Struts (per floorplan)
- TV Shelf
- Cable TV Hook-up
- 2 Stereo Speakers
- Stain Resistant Carpet w/ Padding
- Solid Privacy Doors
- Side Ventilation Windows
- Solid Oak Slide-out Fascia
- Full Length Mirrored Wardrobe Closet with 51 cu ft. Storage (per floorplan)

BATHROOM

- Built-in Wood Medicine Cabinet and Mirror
- Ceiling Light with Convenient Wall Switch
- China Foot Flush Toilet(s)
- Glass Shower Door (Neo-Angled Showers)
- ABS Tub and Shower with One-piece Surround
- Oversized Garden Tub (per floorplan)
- 12" 10-blade Fantastic Bath Fan™
- Bathroom Towel Bar and Hand Towel Ring
- Brass Finished Toilet Paper Holder
- Waste Basket

EXTERIOR

- New Exterior Graphics Package
- .024 Gauge High Gloss Aluminum Three-Tone Exterior
- 30" Smooth Fiberglass Radius Primary Entrance Door (26" secondary)
- Smooth Fiberglass Radius Baggage Doors with Thumb Pulls and Holdbacks
- Plywood Backer on Exterior Mounts
- A & E Side Awning
- Diamond Plate Rock Guard (n/a 391FLFB)
- One-piece Rock Guard Awning (Front Window models)
- Awning Drip Rail with Downspouts
- Upgraded ABS Color Keyed Fender Skirts with Scene
- 15" Radial Tires
- Entry Assist Handle
- 30 lb. Double LP Tanks with Automatic Change Over
- LP Tank Cover
- Colored Dump Valve Handles
- City Water Fill with Brass Valve
- Rear Bumper with Sewer Hose Storage

CONSTRUCTION

- 12" Extruded I-beam Frame
- Cambered Chasis
- Seamless Roto-cast Holding Tanks
- Color Coded Water Lines
- Darco Underbelly Wrapped at Ends
- Boot Strapping
- 2" x 3" Floor Joists 12" on Center
- 5/8" 5-ply Tongue and Groove Plywood Floor Decking
- 2" Wall Studs Maximum 16" on Center
- Steel Framed 6' Entrance Doors
- 5" Bowed Truss Roof Rafters
- 3/8" Walk-on Roof Decking
- Seamless One-piece Rubber Roof w/ 12 Year Warranty
- Double Wipe Slide-out Seal
- R-7 Insulation Throughout (Floors, Walls, Ceilings, and Slide-outs)
- Galvanized Steel Wheelwells with Fiberglass Insulation (except slide-outs)

SECURITY AND SAFETY

- Smoke Detector
- Fire Extinguisher
- Carbon Monoxide Detector
- LP Gas Leak Detector
- Flush Door Latch with Integral Dead Bolt Lock
- Main Entry Step Light with Interior Switch
- Amber Porch Light with Interior Switch
- Main Entry Doorside Scare Light
- Screen Door with Safety Latch
- GFI Receptacles and Covered Patio Outlet
- Welded Heavy Duty Safety Chains
- Hitch Light
- E-Z Open Entry Steps
- Lockable Fiberglass Radius Baggage Doors

POPULAR OPTIONS

- Safety Glass Black Framed Tinted Windows
- Fiberglass Exterior w/ 16" Tires and 6,000 lb Axles
- Skylight over Tub
- Garden Tub Glass Door (per floorplan)
- Garden Shower with Glass Door (per floorplan)
- Extra Large 8 cu-ft Double Door RV Refrigerator (IPO House Type)
- La-Z-Boy® Living Room Furniture (A Forest River Exclusive)
- Double Sofa Hide-A-Bed
- Queen Size Hide-A-Bed with Flip-up Footrests
- Free Standing Coordinated Dinette w/4 chairs and Flip Leaf
- Second Drawer under Dinette (n/a with Free Standing Dinette)
- Atrium Window
- Phone Jack
- DVD Stereo 10+2 Surround Sound System
- Bar Stools (per floorplan)
- Stabilizer Jacks
- Detachable Hitch
- Outside Shower
- 10-gallon Gas/Electric DSI Water Heater (IPO 20 gal Electric)
- Slide Room Awning(s)
- Spare Tire, Carrier and Cover
- Exterior LP Gas Grill
- Ceiling Paddle Fan(s) w/ Wall Switch
- Living Room Carpet in front of Slide Only

FOREST RIVER'S HALLMARK OF EXCELLENCE:
PRE-DELIVERY INSPECTION FACILITIES



**THAT'S 20,000 SQUARE FEET OF QUALITY ASSURANCE.
THE BARE ESSENTIALS FOR A PREMIUM PRODUCT.**

Brought online in 2005, Forest River is proud of its state-of-the-art test facility. This beautiful building blends many of the old tried and true methods of testing our diverse types of RVs with new innovative ways of solving quality issues. Being centrally located to most Forest River manufacturing facilities, this 20,000 square foot PDI (Pre-delivery Inspection) test building gives immediate daily feedback to individual managers. This assures the production facilities that nothing has slipped by the plant's quality assurance personnel and the units are "green" and ready to ship.

PEACE OF MIND.

Forest River has yet another exclusive feature to offer: One year of free roadside assistance will be given to every 2007 Wildwood customer. This is just one more way to say "Thank you" and to ensure an enjoyable traveling experience.



YOUR WILDWOOD DEALER



Forest River, Inc.
914 C.R. 1
Elkhart, IN 46514
(574) 533-5934
www.forestriverinc.com
www.forestriveraccessories.com