

Montana

The New

Mountaineer Edition



Mountaineer Edition
Quality, Value and Style - where it counts.



Huge fully vented windows provide a scenic view from the comfort of this rear lounge Mountaineer. You can enjoy nature while relaxing in residentially designed recliner/gliders in this 329 RLT floor plan, shown here in Autumn Harvest decor. The higher sidewall profile design offers ample headroom for larger overhead cabinetry and space for a single pedestal table and four chairs with hardwood-framed backs and seat base.

Mountaineer Edition

Quality, Value and Style - Where it counts.

This spacious 344 RET kitchen floorplan offers an L-shaped workspace for ultimate convenience in storage, meal preparation, and entertaining. The new "Mountain Cherry" cabinetry with oiled bronze lights and hardware compliments the modern decor ensemble. All Mountaineers offer residential quality cabinetry with screwed together cabinet faces with hardwood doors and drawer fronts. A high-arching designer faucet with deep bowl sinks and deluxe appliances complete the perfect kitchen.



Luxuriously Appointed Residentially Designed Travel Trailers and Fifth Wheels

Montana *Mountaineer Edition*

Montana continues to be the best selling brand fifth-wheel in the business. Its unique appeal results from listening closely to our customers and implementing their preferences for traditional residential styling and comfort. The Montana's quality, durability and construction have become legendary for those customers who want the best while pursuing an RV lifestyle.

The Montana Mountaineer Edition offers excellent quality and value with contemporary style and floor plan amenities that make traveling with friends and family more enjoyable and affordable.



Beauty shows in every careful detail.

Introducing the all-new redesigned Montana Mountaineer Edition. The Mountaineer Edition offers the same quality, value and durability as the original Montana with a sporty new look and contemporary style. Additionally, the Mountaineer Edition is designed to offer greater affordability and floor plan versatility for those times when family or friends are traveling with you.

Our new "Juniper Garden" decor provides the contemporary style sought by many of today's customers.



Hide-a bed sofa shown in Juniper Garden decor.



Bedroom in Autumn Harvest bedroom decor.



Bedroom in Mountain Vineyard bedroom

Mountaineer's slide-out bedroom features a 60"x80" queen bed in the slide-out area and convenient bedside shelves. The mirrored closet spans 92" along the entire front wall with a hanging clothes rod and reinforced shelf.



303RLD shown in "Juniper Garden" decor with optional free standing table and chairs.



Bedroom in Juniper Garden bedroom

Comfort is knowing you have everything you need.

An extra large chest of six drawers with full extension drawer glides provide maximum bedroom storage and the entertainment center with satellite prep is big enough to accommodate today's larger 19" televisions.



Double-Sink Walk-through bathroom provides added space for you and your guests. We include a second bathroom sink and medicine cabinet to support additional travelers or simply to provide every couple with their own personal space to get ready for the day and store toiletries. Solid fore and aft doors increase privacy and allow access from either the bedroom or living areas.



Side-Aisle bathroom offers unmatched space and privacy with full access to and from the bedroom and living areas while the bathroom is in use. Our solid pocket door offers significantly more bedroom privacy than the typical accordion doors used by competitors.



Spacious

accommodations provide room for you and your guests.



The **rear play house** area of the 342PHT easily sleeps up to four adults and features a jack knife sofa-bed, a fold up bunk above it, and dual fold down bunks on the rear wall that when stowed away create a tremendous amount of living space and privacy for additional family members or guests.



The 342PHT **rear play house** provides ample storage space including a wardrobe closet with hanging rod below the entertainment center and shelving along sidewall of the fold down bunk area.

Storage space is ample and easy to



Mountaineer's **standard bicycle rack** extends from the rear bumper frame, supporting up to 200 pounds. The rack allows you to store bikes or other large items which do not fit easily into the pass-thru bay. The ABS plastic storage tray and vertical steel support beam allows items to be transported safely and securely during travel.

The **pass thru storage bay** with optional slide tray is intelligently designed to allow cargo items to remain clear of plumbing pipes. Side swing baggage doors on the off-door-side allows easy access to your cargo without the doors hitting the bedroom slide room. Fully enclosed dump valves prevent winter freeze-ups.



The huge **under-seat storage drawer** beneath the booth dinette is easy to access without disturbing diners.

The **slide-out pantry** has wire storage baskets, a shelf for high packages, and a separate waste container area below.

Mountaineer Edition



The rear kitchen of this 307 RKD offers unmatched countertop space with its unique U-shaped design. The living room provides ample space for two recliner/gliders and a huge 40"x70" Mountain view window to allow enjoyment of your favorite landscape view. Shown here in Mountain Vineyard decor.

The main slide room area of this 307 RKD maximizes space and comfort with a standard hide-a-bed sofa and booth dinette combination. Both easily convert into guest sleeping areas to comfortably sleep three adults. Shown here in Mountain Vineyard decor.



The deluxe entertainment center designed for all side bath floorplans allows the TV to be centered on the main living room wall for optimal viewing at all seating positions. The decorative glass cabinets, coat closet with hanging rod, large pantry and entertainment cabinets add storage space not found in most other brands. This unique cabinet enhances the overall appeal of the entire living room area.



Superior Construction

Roof (R-

1. One-Piece EPDM rubber roof membrane
2. Aluminum radius roof transition molding (*Fifth-Wheels only*)
3. 3/8" Structurewood roof decking
4. 5" Fabricated steel truss rafter
5. Fiberglass insulation
6. Ceiling decking
7. Vinyl ceiling
8. Insulated, foam-core air conditioning duct

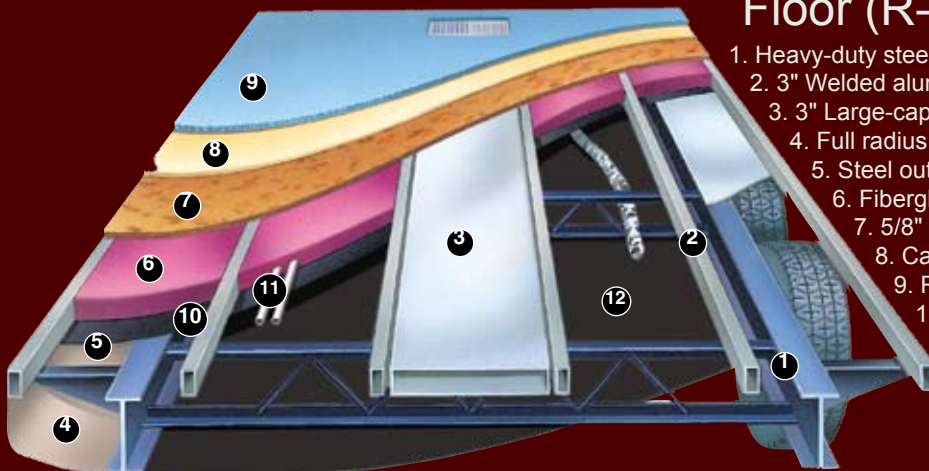


Sidewalls

9. Gel-Coated Filon™ fiberglass
10. 1/8" luan board
11. Second layer 1/8" luan board with seams staggered
12. Solid block insulation foam
13. Interior decorator board
14. 2" Welded aluminum wall studs
15. Electro-galvanized sheet metal backing strips
16. Radius corner blocks
17. Extended hitch pin (FW)

Floor (R-14)

1. Heavy-duty steel I-Beam
2. 3" Welded aluminum floor joists on 16" centers
3. 3" Large-capacity heat duct
4. Full radius wrap aluminum enclosure
5. Steel outriggers
6. Fiberglass insulation
7. 5/8" Seamless floor decking
8. Carpet pad
9. Residential-grade carpeting with stain protectant
10. 2" Heat duct from furnace to underbelly
11. Enclosed and insulated water lines
12. Heavy-duty 1/4" one-piece underbelly

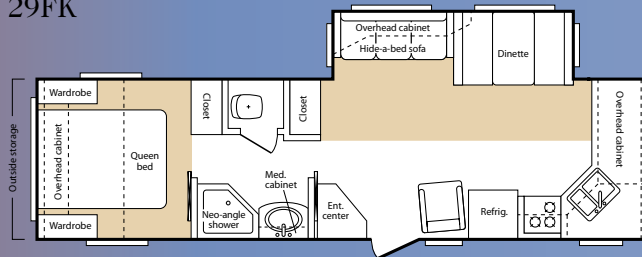


Travel Trailer Floor Plans

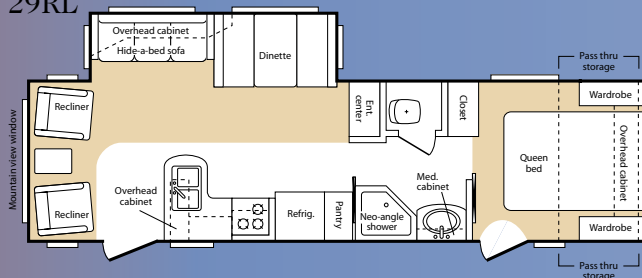
Room to move when you are on the go.

We planned carefully so that you can travel with all the items which are important to your leisure time, and we've positioned the storage, inside and out, so it is easy to access. There is room for clothing, linens, equipment and outdoor furniture, so go ahead, take it along.

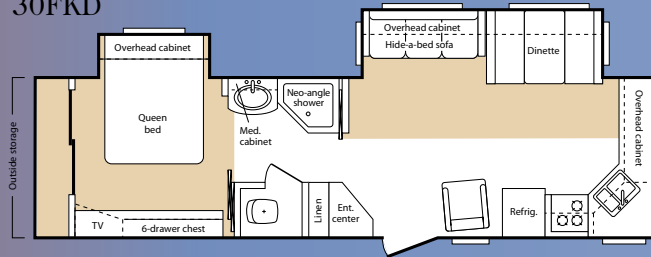
29FK



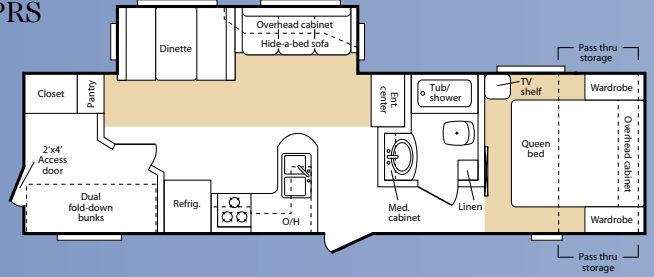
29RL



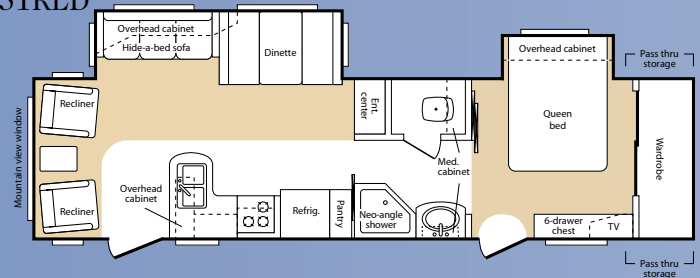
30FKD



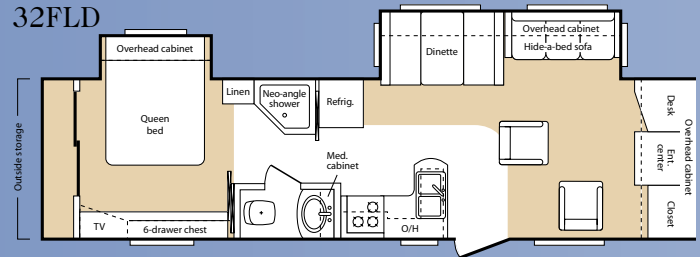
30PRS



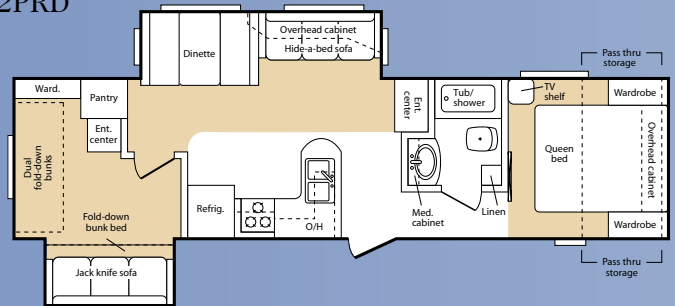
31RLD



32FLD



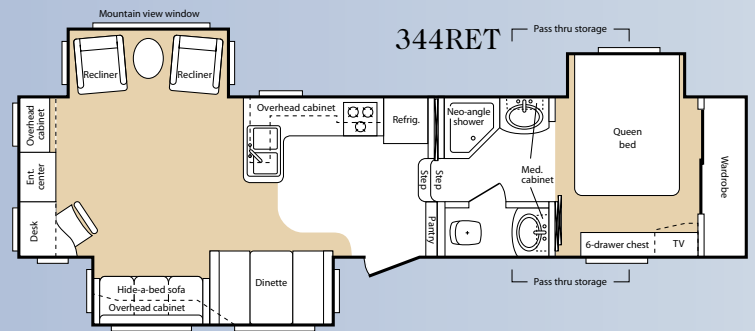
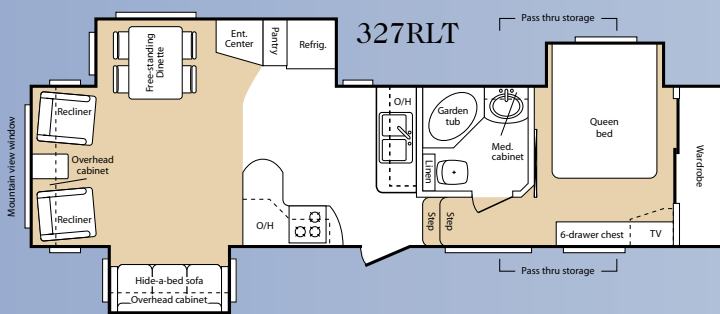
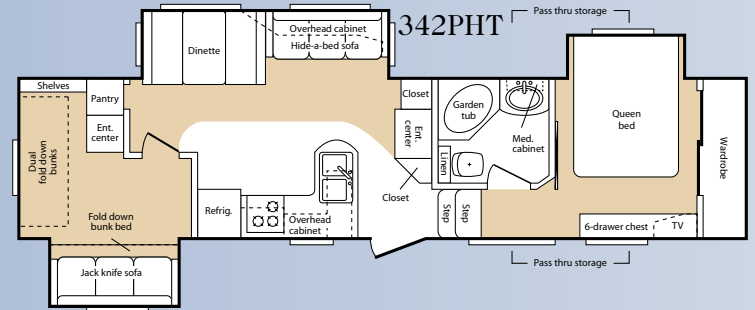
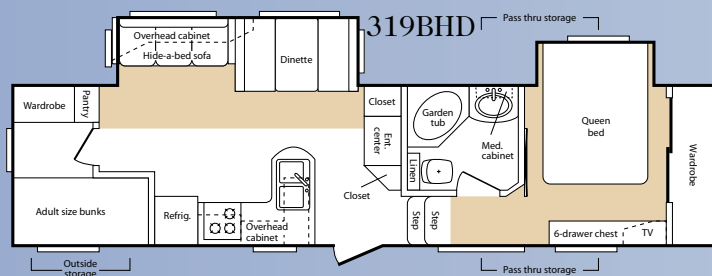
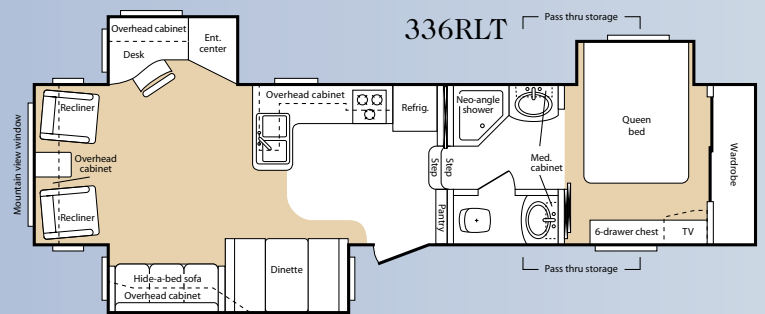
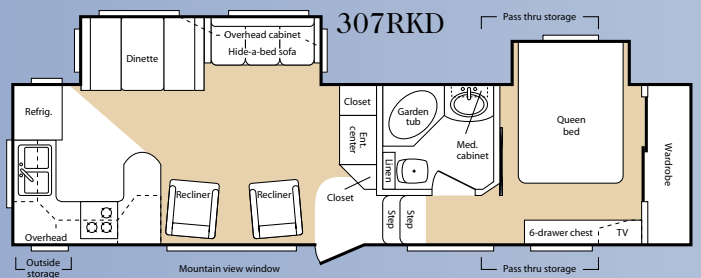
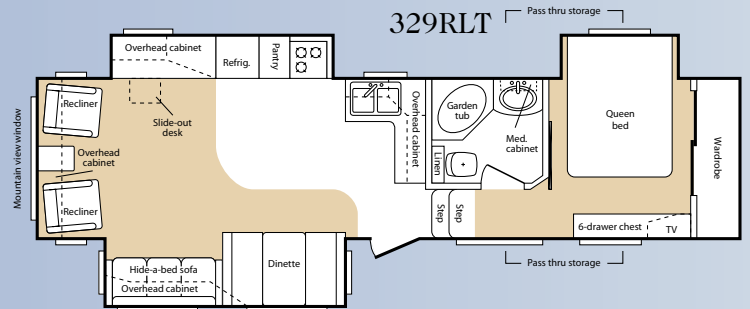
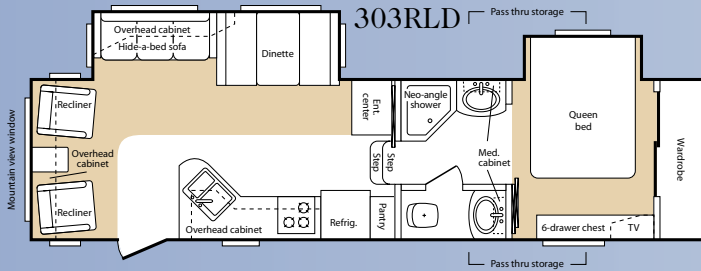
32PRD



Travel Trailer Specifications

Travel Trailers	29FK	29RL	30FKD	30PRS	31RLD	32FLD	32PRD
Shipping Weight	7425	7325	8680	7685	8690	8400	TBD
Carrying Capacity	2575	2675	2510	3435	2315	2675	TBD
Hitch	1160	795	1030	960	845	915	TBD
Exterior Length	33'	33'	35' 2"	33' 11"	35' 6"	35' 6"	35' 6"
Ext Height	11' 0"	11' 0"	11' 1"	11' 1"	11' 1"	11' 1"	11' 1"
Fresh Water	49	49	67	67	67	67	67
Waste Water	38	38	38	38	38	38	38
Grey Water	76	76	76	76	76	76	76

Fifth Wheel Floor Plans



Fifth Wheel Specifications

Fifth Wheels	303RLD	307RKD	319BHD	327RLT	329RLT	336RLT	342PHT	344RET
Shipping Weight	9645	9755	9940	10220	10220	10505	10635	10625
Carrying Capacity	4305	4450	3935	3870	3820	3585	3720	3570
Hitch	1950	2205	1875	2090	2040	2090	2355	2195
Exterior Length	33' 6"	33' 9"	35'	35'	35'	35' 11"	36' 3"	36' 3"
Ext Height	12' 9"	12' 9"	13' 0"	12' 9"	12' 9"	12' 9"	13' 0"	12' 9"
Fresh Water	67	67	67	67	67	67	67	67
Waste Water	38	38	38	38	38	38	38	38
Grey Water	76	76	76	76	76	76	76	76

Interior

Living Area

	1500 TT	TT	FW
6'8" interior head room	S	S	NA
Residential carpeting and upholstery with fabric protector	S	S	S
Entertainment center w/ DVD AM/FM CD Surround Sound	S	S	S
Tall slide room with "plate depth" overhead cabinets	S	S	S
Dual swivel rocker(s) (Most models)	S	S	NA
Dual recliner / gliders	O	O	S
Hide-a-bed sofa (Most models)	S	S	S
Pleated day / night window shades	S	S	S
12v rechargeable flashlight near exit	M	M	M
Deluxe oiled bronze decorative lighting	S	S	S
Free-standing end table with lamp (except 342,319)	NA	NA	S
Decorative ceiling fan with 110V light fixture	NA	NA	S
Deluxe crown molding	NA	NA	S

Kitchen

Solid "Mountain Cherry" hardwood raised panel cabinet doors with cathedral tops	S	S	S
Heavy-duty steel drawer glides with ball bearing rollers	S	S	S
Cabinet toe kicks (Most models)	M	M	M
Lighted range hood with fan	S	S	S
Wide deep drawers – real "Mountain cherry" wood	S	S	S
Residential-size overhead "Mountain cherry" cabinets	S	S	S
Deluxe bowl kitchen sink with oiled-bronze high-arch faucet	S	S	S
Dual sink cover cutting boards	S	S	S
Garbage can	S	S	S
Silverware tray	S	S	S
Power vent fan in kitchen / Living room	S	S	S
Booth dinette w/ storage cabinet and drawer (NA 327RLT)	S	S	S

Bathroom

Deluxe residential porcelain toilet	M	M	M
Larger residential-size bath sink	S	S	S
Tub / shower with /oiled bronze glass enclosure	S	S	S
Medicine cabinet – large mirrored door	S	S	S
Oiled bronze bath sink faucet	S	S	S
Oiled bronze vanity light	S	S	S
Full linoleum bath flooring	S	S	S
Solid panel doors with oiled bronze handles	S	S	S
Deluxe wood grain towel holder	S	S	S
Power vent fan in commode area	S	S	S

Bedroom

Deluxe innerspring 60" x 80" mattress	NA	S	M
Deluxe innerspring 60" x 74" mattress	S	NA	NA
Quilted bedspread, two pillows with shams	S	S	S
Overhead TV cabinet with co-ax and 110V outlet	M	M	M
Six-drawer bedroom dresser with full extension drawer guides (most models)	S	S	S
Solid panel bedroom door(s) with oiled bronze handles	S	S	S
Full width sliding mirror closet doors	S	S	S
Under-bed storage with lift-assist struts	S	S	S

Appliances

8 cu.ft. double-door refrigerator	S	S	S
Deluxe microwave oven with exterior exhaust fan	M	M	M
15,000 BTU ducted roof air conditioner with wall-mount thermostat and "Quick Cool"	M	M	M
High-output range with automatic ignitor and 22" oven	M	M	M
25" Stereo television	M	M	M
TV antenna with signal booster	M	M	M

Utilities

Water heater by-pass kit	M	M	M
10-gallon gas/electric DSI water heater	S	S	S
Systems monitor panel	S	S	S
55 Amp convertor	S	S	S
30-amp electrical service	S	S	NA
50 AMP electrical service	NA	NA	S

Exterior

	1500 TT	TT	FW
15" Wheels and tires on TT's	S	S	NA
16" Wheels and tires (on fifth wheels only)	NA	NA	S
2" laminated fiberglass exterior walls	S	S	S
5" fabricated steel truss rafters	S	S	S
Molded fiberglass front end cap	NA	NA	S
Block foam insulation in sidewall (R-9)	S	S	S
Residential fiberglass insulation in floor and roof (R-14)	S	S	S
Fully enclosed and heated underbelly	S	S	S
Enclosed and heated holding tanks and water lines	S	S	S
Hitch and security light	S	S	S
Extra wide 30" entrance door	S	S	S
Radius baggage doors with locking latches	S	S	S
Smooth-operating, easy-to-use entrance steps	S	S	S
"Mountain Gold" radius wrap lower walls	S	S	S
Easy lube axles	M	M	M
Deluxe patio awning	M	M	M

Options - Exterior

Power tongue jack	O	O	NA
Slide awning — main room	O	O	O
Slide awning — bedroom	NA	O	O
Slide awning — third room	NA	NA	O
Aluminum wheels with chrome center hub cap	O	O	O
Dual-side Pass Through storage area slide trays	NA	NA	O

Options - Interior

Free-standing dinette with 4 chairs	O	O	O
Recliner / glider IPO swivel rocker	O	O	S
Second recliner / glider IPO swivel rocker	O	O	S
Jackknife sofa IPO dual recliner / gliders (307, 344 only)	NA	NA	O
High-back desk chair (TT - 32FLD Only)	NA	O	O
Second low profile 13,500 BTU A/C in bedroom	NA	NA	O
Wire and frame for bedroom A/C	NA	NA	O

Value Package

8 c.f. double door refrigerator	•	•	•
Crank-down rear stabilizer jacks	•	•	•
Fold-away exterior entry / exit handle	•	•	•
Interior entry and stairway handles	•	•	•
Security light, door-side	•	•	•
Security light, road-side	•	•	•
Hitch light	•	•	•
Sky dome over tub or shower	•	•	•
Raised "Mountain Cherry" refrigerator door panels	•	•	•
DVD / CD player with AM / FM Surround	•	•	•
Dual bedroom speakers with on / off switch	•	•	•
Electric front jacks (FW's only)	NA	NA	•
Under-mount crank-down spare tire and carrier (FW's only)	NA	NA	•
Tilt-down bumper mount tire and carrier (TT's only)	•	•	NA
Satellite dish prep with RG 6 Cable	•	•	•
Slide-out rear bumper storage tray with bike rack and 200 lb. capacity	•	•	•
One-piece full walk-on roof	S	S	S
Dark tinted windows	M	M	M
Safety glass windows	M	M	M
Exterior shower	S	S	S
Roof ladder	S	S	S
Aluminum bumper cover	NA	NA	S
Outstanding exterior storage	S	S	S
Extended hitch pin	NA	NA	M
Heavy-duty steel I-beam frame	S	S	S

S = Standard Feature

O = Option

M = Moving to Montana Package

Mountaineer is a product of:



Keystone RV Company

2642 Hackberry Drive Goshen, IN 46526
(574) 535-2100 www.keystone-mountaineer.com

Your Mountaineer Dealer:



Product information is as accurate as possible as of the date of publication of this brochure. Features, floor plans, and specifications are subject to change without notice. Please also consult Keystone's web site at www.keystonerv.com for more current product information and specifications. Tow vehicle disclaimer: CAUTION: Owners of Keystone recreational vehicles are solely responsible for the selection and proper use of tow vehicles. All customers should consult with a motor vehicle manufacturer or their dealer concerning the purchase and use of suitable tow vehicles for Keystone products. Keystone disclaims any liability or damages suffered as a result of the selection, operation, use or misuse of a tow vehicle. KEYSTONE'S LIMITED WARRANTY DOES NOT COVER DAMAGE TO THE RECREATIONAL VEHICLE OR THE TOW VEHICLE AS A RESULT OF THE SELECTION, OPERATION, USE OR MISUSE OF THE TOW VEHICLE. 05/2006

