

 **IMPULSE**

2007







## GO WITH YOUR IMPULSE.

It's hard not to love the all-new 2007 Itasca Impulse™. The Impulse offers floorplan flexibility and great amenities at a price guaranteed to please. Six models with abundant storage make it the perfect vehicle for a weekend

getaway or a family vacation. Our SmartSpace™ design philosophy focuses on user-friendly features that make the most of the available space so you'll live large and have plenty of room to store your gear in your new Impulse.





## COMFORT AND VARIETY

Contemporary fabrics and beautiful cabinetry with beadboard doors create a warm, inviting atmosphere you'll be proud to call home. Satin nickel hardware and your choice of Sierra Maple or Portsmouth Oak finishes complete the look.

The Impulse offers six different floorplans so you can choose the one that's perfect for you. Most models offer an available entertainment center that can be enhanced with the Home Theater Sound System featuring a DVD player, receiver, amplifier, five recessed speakers and a subwoofer (NA 22B).

A storage drawer below the range top and a large two-door refrigerator/freezer allow you to bring plenty of food for the trip. A microwave is standard and a Magic Chef® three burner range with oven is also available to expand your cooking options.

The comfortable dinette seats four for meals or an afternoon card game and quickly converts to a bed for additional sleeping space.

31C MINERAL WITH PORTSMOUTH OAK



FRONT BUNK

**ENTERTAINMENT CENTER** The front bunk and ladder on most models can be replaced with an entertainment center featuring a 27" TV, video selection system and the available Home Theater Sound System.

**WEB** Select a Key Feature

The **WEB** icon designates a Winnebago Industries Key Feature. For further in-depth information and photos, use this Drop-down Menu or click on the 'Key Features' page at [winnebagoind.com](http://winnebagoind.com).



**CABINET STORAGE** Store extra blankets and bedding in the large cabinet over the cab area when you choose the available entertainment center.



**GALLEY** The molded double-bowl sink comes with a stylish high-arch faucet that accommodates large pots and pans.



**FULL-EXTENSION DRAWER SLIDES** Cabinet drawers open 100% for easy access to stored goods.





OVERHEAD STORAGE



### ROOM TO REST

Five Impulse floorplans offer a queen bed with additional sleeping space in the dinette and overhead bunk. The bed in the 28P is part of the SmartSpace rear storage compartment. It flips up, allowing you to travel with oversized items.

Driving the Impulse is a pleasure even for first time RV owners, thanks to a variety of automotive features that make your trip more enjoyable. These include power windows, dual air bags and an auxiliary start/stop switch that helps start your coach if the chassis battery loses its charge. Choose the available rearview monitor for assurance when backing or maneuvering.

**BEDROOM** Deep overhead cabinets and a large wardrobe are SmartSpace design elements that provide an abundance of interior storage space.



**DASH** Automotive styling places controls within easy reach. Dual airbags are standard.



## MORE OPTIONS

The Impulse offers an exterior accessory package featuring a ladder, painted running boards and storage bin covers in the rear compartments of the 28P, 29T and 31C. You can also add an awning (28P, 29T, 31C), which is great for tailgate parties, lazy afternoons or entertaining on a summer evening.

Smart Storage™ allows you to carry more, larger items thanks to the innovative rear/side storage compartment on the 28P, 29T and 31C. It includes attachment points for key tools and accessories, plus recessed storage areas in the floor for added storage flexibility. A water system winterization package helps you prepare for colder months. Add a 4,000-watt Onan® MicroQuiet™ generator for power when and where you need it.



### SMART STORAGE

WEB

**REAR STORAGE** The storage bay on the 28P, 29T and 31C is one of the largest C-body storage bays. It is shown here on the 31C with the available exterior accessory package.

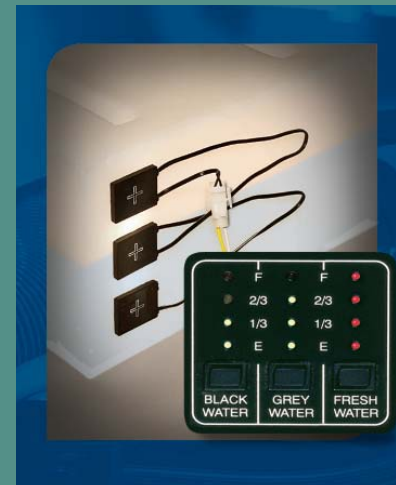


### PAINTED STEEL RUNNING BOARDS

The available accessory package includes handy, stylish painted steel running boards.

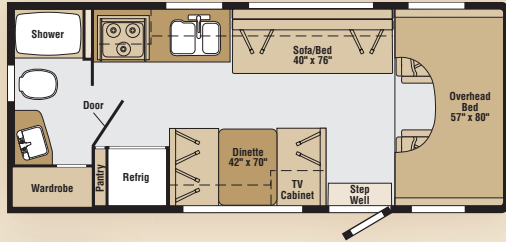


**REAR/SIDE STORAGE** The recessed area in the rear storage compartment is a great place to store damp items or ice down your favorite drinks. It includes a convenient drain.

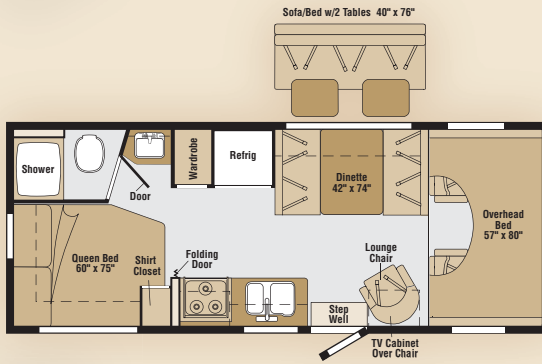


### WEB TRUELEVEL

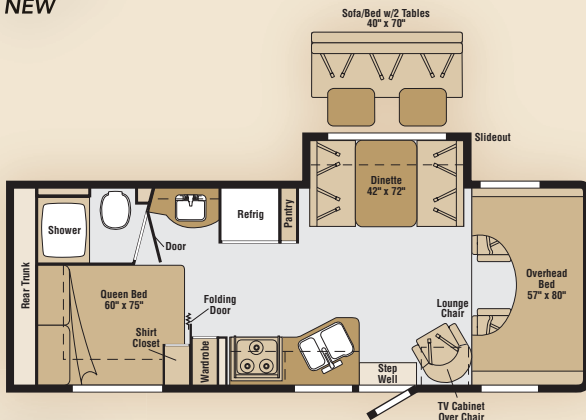
Eliminate the guesswork when it comes to tank levels with our exclusive TrueLevel™ holding tank monitoring system. It incorporates detector cells that read liquid levels from outside the tank. No probes mean no more corrosion or clogging, just accurate readings time after time.



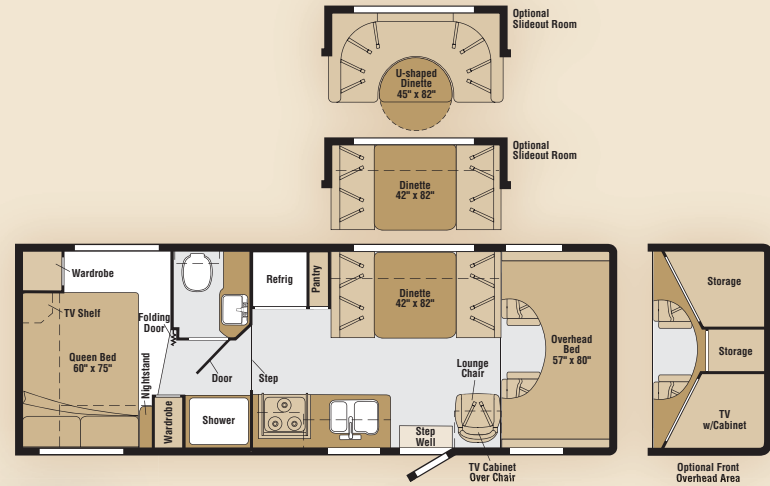
**22B**  
NEW



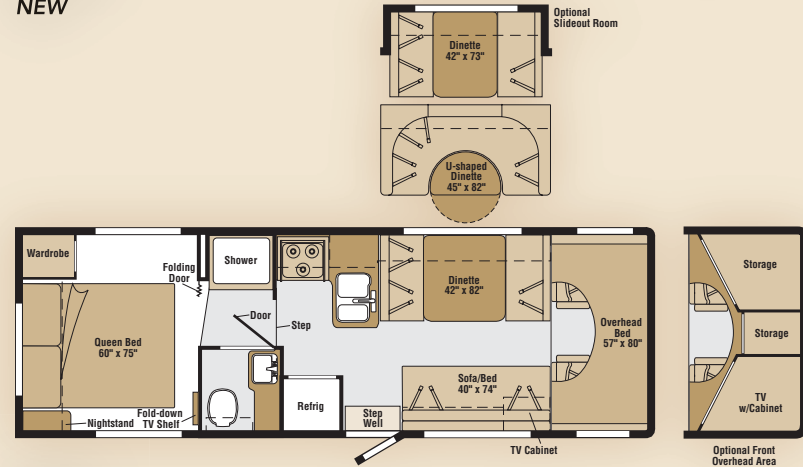
**24V**  
NEW



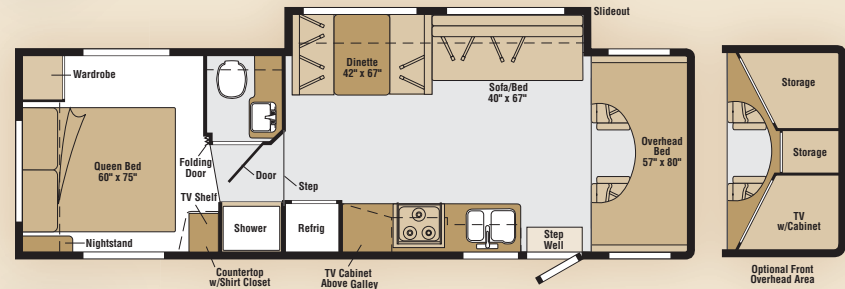
**26A**  
NEW



**28P**  
NEW



**29T**  
NEW



**31C**  
NEW

WEIGHTS & MEASURES	22B NEW	24V NEW	26A NEW	28P NEW	29T NEW	31C NEW
Length	23' <sup>A</sup>	24'8" <sup>B</sup> / 24'8" <sup>C</sup> / 25'5" <sup>D</sup>	27'3" <sup>C</sup> / 28' <sup>D</sup>	28'2" <sup>C</sup> / 28'11" <sup>D</sup>	30' <sup>C</sup> / 30'10" <sup>D</sup>	31'5" <sup>C</sup> / 32'5" <sup>D</sup>
Exterior Height <sup>1</sup>	11'1" <sup>A</sup>	11'2" <sup>B</sup> / 11'2" <sup>C</sup> / 11'6" <sup>D</sup>	11'2" <sup>C</sup> / 11'6" <sup>D</sup>	11'3" <sup>C</sup> / 11'7" <sup>D</sup>	11'3" <sup>C</sup> / 11'7" <sup>D</sup>	11'1" <sup>C</sup> / 11'5" <sup>D</sup>
Exterior Width <sup>2</sup>	8'5.5"	8'5.5"	8'5.5"	8'5.5"	8'5.5"	8'5.5"
Exterior Storage <sup>3</sup> w/Slideout (cu. ft.)	NA	NA	102	78	80.3	92.7
Exterior Storage <sup>3</sup> w/o Slideout (cu. ft.)	21	37.3	NA	82.7	82.6	NA
Awning Length	11.5'	11.5'	18'	16'	14'	16'
Interior Height (Maximum)	6'8"	6'8"	6'8"	6'10"	6'10"	6'10"
Interior Width	8'0"	8'0"	8'0"	8'0"	8'0"	8'0"
Freshwater Capacity w/Heater <sup>4</sup> (gal.)	33	41	41	41	41	41
Holding Tank Capacity - Black/Gray <sup>4</sup> (gal.)	32 / 39	39 / 29	39 / 29	41 / 41	41 / 41	41 / 41
LP Capacity <sup>6</sup> (gal.)	18	18	18	18	18	18
Fuel Capacity (gal.)	37	55	55	55	55	55
GCWR <sup>8</sup> (lbs.)	18,500 <sup>A</sup>	18,500 <sup>B</sup> / 20,000 <sup>C</sup> / 17,600 <sup>D</sup>	20,000 <sup>C</sup> / 17,600 <sup>D</sup>	20,000 <sup>C</sup> / 17,600 <sup>D</sup>	20,000 <sup>C</sup> / 17,600 <sup>D</sup>	20,000 <sup>C</sup> / 17,600 <sup>D</sup>
GVWR (lbs.)	10,700 <sup>A</sup>	11,500 <sup>B</sup> / 14,050 <sup>C</sup> / 14,050 <sup>D</sup>	14,050 <sup>C</sup> / 14,050 <sup>D</sup>	14,050 <sup>C</sup> / 14,050 <sup>D</sup>	14,050 <sup>C</sup> / 14,050 <sup>D</sup>	14,050 <sup>C</sup> / 14,050 <sup>D</sup>
GAWR - Front (lbs.)	4,600 <sup>A</sup>	4,600 <sup>B</sup> / 4,600 <sup>C</sup> / 4,600 <sup>D</sup>	4,600 <sup>C</sup> / 4,600 <sup>D</sup>	4,600 <sup>C</sup> / 4,600 <sup>D</sup>	4,600 <sup>C</sup> / 4,600 <sup>D</sup>	4,600 <sup>C</sup> / 4,600 <sup>D</sup>
GAWR - Rear (lbs.)	7,800 <sup>A</sup>	7,800 <sup>B</sup> / 9,450 <sup>C</sup> / 9,450 <sup>D</sup>	9,450 <sup>C</sup> / 9,450 <sup>D</sup>	9,450 <sup>C</sup> / 9,450 <sup>D</sup>	9,450 <sup>C</sup> / 9,450 <sup>D</sup>	9,450 <sup>C</sup> / 9,450 <sup>D</sup>
Wheelbase	138" <sup>A</sup>	158" <sup>B</sup> / 158" <sup>C</sup> / 159" <sup>D</sup>	168" <sup>C</sup> / 169" <sup>D</sup>	182" <sup>C</sup> / 183" <sup>D</sup>	190" <sup>C</sup> / 191" <sup>D</sup>	220" <sup>C</sup> / 221" <sup>D</sup>

AUTOMOTIVE/CHASSIS	22B	24V	26A	28P	29T	31C
<b>A Ford® E350 Chassis</b> – 5.4L Triton® SEFI V8 engine, 255-hp, automatic transmission, TorqShift™ 5-speed with tow/haul feature, 4-wheel ABS, 130-amp. alternator, dual air bags, <b>Trailer Hitch</b> ® 5,000-lb. drawbar/350 lbs. maximum vertical tongue weight & wiring w/7-pin connector, <b>Wheelcovers</b> stainless steel (4)	S					
<b>B Ford® E350 Chassis</b> – 6.8L Super-Duty V10 SOHC Triton engine, 305-hp, automatic transmission, TorqShift™ 5-speed with tow/haul feature, 4-wheel ABS, 130-amp. alternator, dual air bags, <b>Trailer Hitch</b> ® 5,000-lb. drawbar/350 lbs. maximum vertical tongue weight & wiring w/7-pin connector, <b>Wheelcovers</b> stainless steel (4)	S					
<b>C Ford E450 Chassis</b> – 6.8L Super-Duty V10 SOHC Triton engine, 305-hp, automatic transmission, TorqShift™ 5-speed with tow/haul feature, 4-wheel ABS, 130-amp. alternator, dual air bags, <b>Trailer Hitch</b> ® 5,000-lb. drawbar/350 lbs. maximum vertical tongue weight & wiring w/7-pin connector, <b>Wheelcovers</b> stainless steel (4)	O	S	S	S	S	S
<b>D Chevrolet® Chassis</b> – 6.0L Vortec V8 engine, 300-hp, automatic 4-speed overdrive transmission, tow/haul mode switch, 4-wheel ABS, 145-amp. alternator, dual air bags, <b>Trailer Hitch</b> ® 3,500-lb. drawbar/350 lbs. maximum vertical tongue weight & wiring w/7-pin connector, <b>Wheelcovers</b> stainless steel (4)	O	O	O	O	O	O

CAB AREA & DRIVER CONVENIENCES	22B	24V	26A	28P	29T	31C
<b>Beverage Holder, Cab Seats (Fabric)</b> w/3-point seat belts, armrest, lumbar support, multiajustable slide/recline, <b>Cruise Control, Curtain</b> cab divider & bunk, <b>Hood Release, Mirrors</b> exterior, manual adjust, <b>Power Cab Door Locks</b> driver, passenger, <b>Power Windows, Powerpoint</b> 12-Volt DC/cigarette lighter, <b>Steering Wheel</b> tilt w/power-assist, <b>Trim Panels</b> driver & passenger doors	S	S	S	S	S	S
<b>Mirrors</b> exterior electric remote w/defrost	O	O	O	O	O	O
<b>Monitor System</b> rearview w/single camera	O	O	O	O	O	O

ENTERTAINMENT	22B	24V	26A	28P	29T	31C
<b>Radio</b> AM/FM/Stereo/CD, speakers (4), <b>Satellite System Ready, TV Enhancement Package</b> antenna (amplified), 12-volt DC powerpoint(s), interior jack(s), coax wiring, cable input	S	S	S	S	S	S
<b>DVD Player</b> w/remote (requires 27" TV)	O	O	O	O	O	O
<b>Home Theater Sound System</b> DVD player, amplifier, receiver, recessed speakers (5), subwoofer	O	O	O	O	O	O
<b>TV</b> 13" color 12-volt DVD w/remotes, slide/swivel shelf (located front lounge/dinette area)	O	O	O	O	O	O
<b>TV</b> AC 20" color w/remote, DVD player, galley overhead cabinet						O
<b>TV</b> AC 27" stereo, color w/remote, video selection system, front cabinet						O

INTERIOR	22B	24V	26A	28P	29T	31C
<b>Bunk</b> front overhead w/mattress, slider windows, privacy curtain, storage cabinet, bunk ladder, <b>Ceiling</b> fabric, <b>Countertops</b> laminate, <b>Lights</b> ceiling, incandescent, <b>Roof Vent</b> nonpowered, front overhead bunk, <b>Roof Vent</b> powered, bath, <b>Window Coverings</b> pleated blinds/night (lounge, dinette, & bedroom), mini blinds (bath & galley)	S	S	S	S	S	S
<b>Roof Vent</b> nonpowered, lounge (w/front entertainment center only)	S	S	S	S	S	S

FURNITURE	22B	24V	26A	28P	29T	31C
<b>Sofa</b>	S				S	S
<b>Sofa</b> w/2 tables		O	O			
<b>Lounge Chair</b> swivel/slide		S	S	S		
<b>Dinette</b> w/access to storage below seat(s)	S	S	S	S	S	S
<b>Dinette</b> U-shaped w/access to storage below seats				O	O	

GALLEY	22B	24V	26A	28P	29T	31C
<b>Faucet</b> dual-control, <b>Microwave Oven, Range Hood</b> vented w/light & fan, <b>Range Top</b> 3-burner w/drawer below, <b>Receptacle(s)</b> duplex, <b>Refrigerator/Freezer</b> double-door, Norcold®	S	S	S	S	S	S
<b>Pantry</b>	S	S	S			
<b>Range</b> 3-burner w/oven, Magic Chef®	O	O	O	O	O	O

BATH	22B	24V	26A	28P	29T	31C
<b>Cabinet</b> lavatory, <b>Cabinet</b> medicine, <b>Faucet (Lavatory)</b> dual-control, <b>Faucet (Shower)</b> dual-control w/flexible showerhead, <b>Skylight, Toilet</b> w/hand lever	S	S	S	S	S	S
<b>Shower Door</b> folding				S	S	S
<b>Shower Door</b> curtain	S	S	S			

BEDROOM	22B	24V	26A	28P	29T	31C
<b>Bed</b> queen mattress w/bedspread		S	S		S	S
<b>Bed</b> queen split mattress w/cover, with interior & exterior access to storage below				S		

EXTERIOR	22B	24V	26A	28P	29T	31C
<b>Awning Rails</b> w/rain gutters, <b>Bumpers</b> front & rear, <b>Door</b> entrance w/separate screen door, deadbolt lock, <b>Entrance Door Step</b> manual, <b>Light</b> porch w/interior switch, <b>Mudflaps</b> rear, <b>Receptacle</b> AC duplex, <b>Sidewall Skin</b> 1-piece smooth fiberglass, <b>Storage Compartments</b>	S	S	S	S	S	S

EXTERIOR	22B	24V	26A	28P	29T	31C
<b>Storage</b> large rear storage bay with 2 storage bins, drain plug				S	S	S
<b>Trunk</b> rear backwall, AC duplex receptacle, DC receptacle, shelves, storage baskets, storage hooks, TV antenna jack, plastic compartment w/drain plug			S			
<b>Awning</b> patio, vinyl	O	O	O	O	O	O
<b>Entrance Door Step</b> electric w/doorjamb switch	O	O	O	O	O	O
<b>Exterior Accessory Package</b> exterior ladder, painted steel running boards, storage bin covers (2) (NA 22B, 24V, 26A)	O	O	O	O	O	O

SYSTEMS	22B	24V	26A	28P	29T	31C
<b>HEATING/AC – Air Conditioner (Roof)</b> 13,500 BTU, ceiling-ducted	S	S	S	S	S	S
<b>Air Conditioner (Roof)</b> 14,800 BTU, ceiling-ducted			O	O	O	O
<b>Furnace</b> 25,000 BTU, low-profile, w/wall thermostat	S	S				
<b>Furnace</b> 30,000 BTU, low-profile, w/wall thermostat			S	S	S	S
<b>ELECTRICAL – Auxiliary Start Circuit, Battery (Coach)</b> Group 24 deep-cycle, <b>Battery (Coach)</b> disconnect system, <b>Battery Charge Control</b> automatic dual, <b>Electrical Distribution System</b> DC fuses, AC breakers, 45-amp. electronic converter/charger, <b>Generator Prep Kit, Monitor Panel</b> wall-mounted, battery condition gauge, generator hourmeter gauge, generator start/stop switch, holding tank levels, LP tank level, water heater light(s), water heater switch, water pump switch, water tank level, <b>Power Cord</b> 30-amp., 25'	S	S	S	S	S	S
<b>Batteries (Coach)</b> (2) Group 24 deep-cycle, <b>Generator</b> 4,000-watt, Onan® MicroQuiet™ gas	O	O	O	O	O	O
<b>PLUMBING – Drain</b> 1" water tank, <b>Dump Valve</b> manual, <b>Tank LP</b> , permanent mount w/gauge, <b>TrueLevel™</b> holding tank monitoring system, <b>Water Heater</b> 6-gallon, electronic ignition, LP gas, <b>Water Hookup</b> city, <b>Water Pump</b> demand, <b>Water System Winterization Package</b> water heater bypass valve & siphon tube, <b>Water Tank Fill</b> w/locking door	S	S	S	S	S	S
<b>Drainage System</b> heated, electric, one heat pad per tank, pipe wraps, lighted on/off switch next to monitor panel (NA Canada)	O	O	O	O	O	O

SAFETY	22B	24V	26A	28P	29T	31C
<b>Airbags</b> driver & passenger, <b>Assist Bar</b> interior, <b>Brakelamp</b> high-mount, <b>Child Seat Tether Anchor</b> dinette, <b>Detectors/Alarms</b> LP leak, smoke, carbon monoxide, <b>Fire Extinguisher</b> 10 BC, <b>Ground Fault Interrupter, Seat Belts</b> cab, 3-point, <b>Seat Belts</b> lap (in selected areas), <b>Window</b> escape	S	S	S	S	S	S

WARRANTY <sup>7</sup>	22B	24V	26A	28P	29T	31C
<b>12-month/15,000-mile basic limited warranty; 36-month/36,000-mile limited warranty on structure; 10-year limited parts &amp; labor warranty on roof skin<sup>8</sup></b>	S	S	S	S	S	S

- The height of each model is measured to the top of the tallest standard feature and is based on the curb weight of a typically equipped unit. The actual height of your vehicle may vary by several inches depending on chassis or equipment variations. Please contact your dealer for further information.
- Impulse floorplans feature a wide-body design — over 96" in making your purchase decision, you should be aware that some states restrict access on some or all state roads to 96" in body width. Before making your purchase decision, you should confirm the road usage laws in the states of interest to you.
- The load capacity of your motor home is designated by weight, not by volume, so you cannot necessarily use all available space when loading your motor home.
- Capacities are based on measurements prior to tank installation. Slight capacity variations can result due to installation applications.
- Capacities shown are tank manufacturer's listed water capacity (W.C.). Actual filled LP capacity is 80% of listing due to overfilling prevention device on tank.
- Actual towing capacity is dependent on your particular loading and towing circumstances which includes the GVWR, GAWR, and GCWR as well as adequate trailer brakes. Please refer to the Operator's Manual of your vehicle for further towing information.
- See separate chassis warranty details provided in Owner's Manual.
- See your dealer for complete warranty information.

NA Not Available

S Standard

O Optional

Not all items available in combination. See dealer for details.

Winebag Industries® continuing program of product improvement makes specifications, equipment, model availability, and prices subject to change without notice. Comparisons to other motor homes are based on the most recent information available at printing.



## INTERIOR DECOR

Choose from two fabric selections  
and two wood choices.

SOFA

ACCENT

CARPET



Toffee



Mineral



Portsmouth Oak



Sierra Maple



## EXTERIOR GRAPHICS



Dark Green Metallic

**AVAILABLE ACCESSORY PACKAGE** includes painted steel running boards, an exterior ladder and rear storage bin covers (2) on 28P, 29T and 31C only.



**WINNEBAGOIND.COM** Visit us on the web for more info on all of our motor homes and a host of web-exclusive content.



**BUILT BY WINNEBAGO INDUSTRIES.  
BUILT TO LAST.**

Itasca motor homes are built by Winnebago Industries, the company that defined motor homes. The company that built its reputation on quality construction. The company that transformed the motor home concept into a way of life.

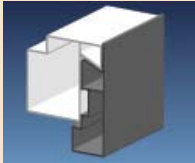
Today, Winnebago Industries brings that reputation for quality and its 48-year history of motor home innovation to the design and construction of every motor home. It's all a part of SuperStructure<sup>®</sup>, our exclusive system of proprietary structural components that instills each motor home with improved strength and durability.

**SOLID FOUNDATION** Steel and aluminum truss work provides a solid, flat foundation for floors and sidewalls. Winnebago Industries engineers also take special care to distribute the weight of components to ensure proper handling and stability.



**INTERLOCKING**

**JOINTS** The floors, sidewalls and roof are all integrally connected using interlocking joints. This creates a coach body that acts as a cohesive unit for improved strength and durability.



**E-COATING** Winnebago Industries employs an exclusive 12-stage automotive-style dip tank process to apply an advanced electrodeposition coating on critical steel components for unmatched corrosion protection.

**THERMO-PANEL<sup>®</sup> SIDEWALLS** Invented by Winnebago Industries, Thermo-Panel construction combines a fiberglass panel, high-density, block-foam insulation and aluminum support structures to create some of the most durable, lightweight sidewalls in the industry.

**ATTENTION TO DETAIL** Whether it's sending every coach through a high-pressure water tunnel to check for leaks or labeling each individual wire and bar-coding parts to save time and frustration during service, Winnebago Industries considers every detail to ensure your Itasca motor home provides you with years of pleasure.

**STRONG AS STEEL** Appliances are secured directly to embedded steel plates for added safety.



1-year-old Itasca fiberglass roof



1-year-old competitor's rubber roof

**FIBERGLASS ROOF** Winnebago Industries motor homes feature a one-piece fiberglass roof, backed with a 10-year limited parts-and-labor roof skin warranty. Fiberglass offers superior strength, attractiveness and durability over the rubber roofs found on many competitive models which can chalk, streak and degrade over time. Fiberglass also provides increased puncture and tear resistance.



**TAKE A TOUR** We're proud of our process, state-of-the-art facilities and the people who make Winnebago Industries number one. We invite you to visit our factory in Forest City, Iowa, for a first-hand look at the dedication and technology behind every motor home we build.



**RECOGNIZED QUALITY** The Recreation Vehicle Dealer Association annually rates RV manufacturers and awards the Quality Circle award to manufacturers who provide exceptional products, service and support. Winnebago Industries is proud to be the only manufacturer to receive this award every year since its inception.



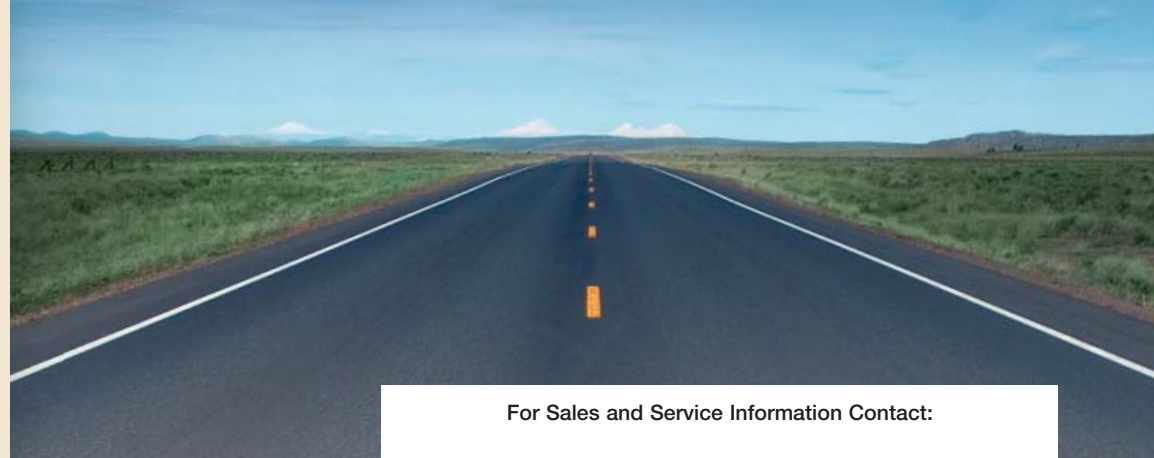
**COMMITTED TO SERVICE** We back our motor homes with the industry's best service after the sale.

- 12-month/15,000-mile basic limited warranty
- 36-month/36,000-mile limited warranty on structure
- Standard 10-year limited parts-and-labor roof skin warranty
- Complimentary 24-hour roadside assistance program
- TripSaver Fast Track Parts. TripSaver guarantees that in-stock warranty parts ship directly to your dealer within 24 hours.
- National dealer service network



**WIT CLUB** Itasca owners are like family. Joining the Winnebago-Itasca Travelers is a great way to meet and travel with other Itasca enthusiasts. Members enjoy:

- Caravans and rallies
- Local and state group activities
- RV travel benefits



For Sales and Service Information Contact:



Built proudly by



NYSE listing: WGO

©2006 Winnebago Industries, Inc.

Printed in USA

Seat belts are your most important hookup. Always buckle up.